

Historic Properties

APRIL 2015



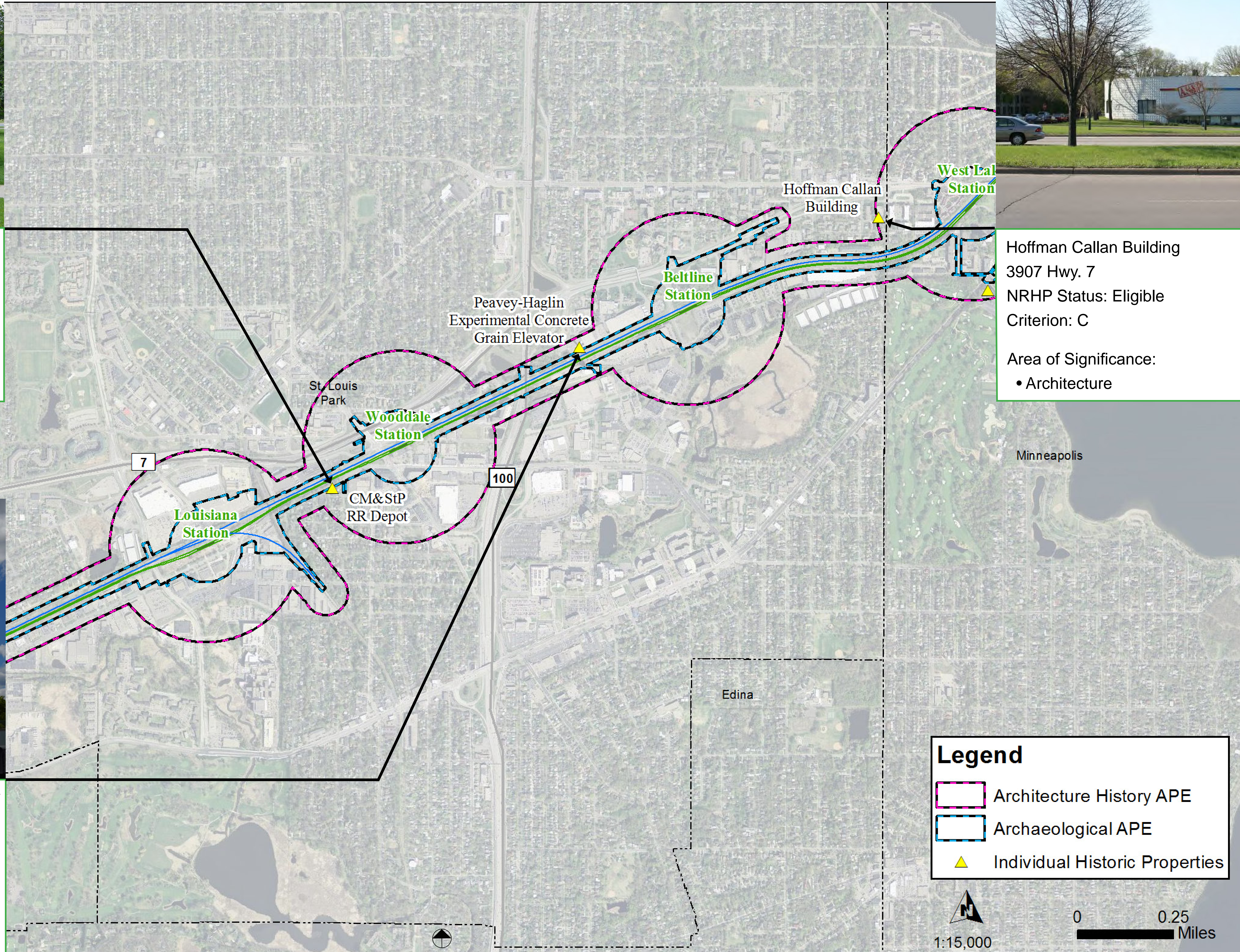
Chicago Milwaukee & St. Paul RR Depot
6210 W. 37th St
NRHP Status: Listed
Criterion: A
Area of Significance:
• Transportation



Hoffman Callan Building
3907 Hwy. 7
NRHP Status: Eligible
Criterion: C
Area of Significance:
• Architecture



Peavey-Haglin Experimental Concrete Grain Elevator
Hwys. 100 and 25
NRHP Status: Listed, also a National Historic Landmark
Criterion: C
Area of Significance:
• Economics
• Engineering



ABBREVIATIONS:
NRHP=National Register of Historic Places
APE=Area of Potential Effect