

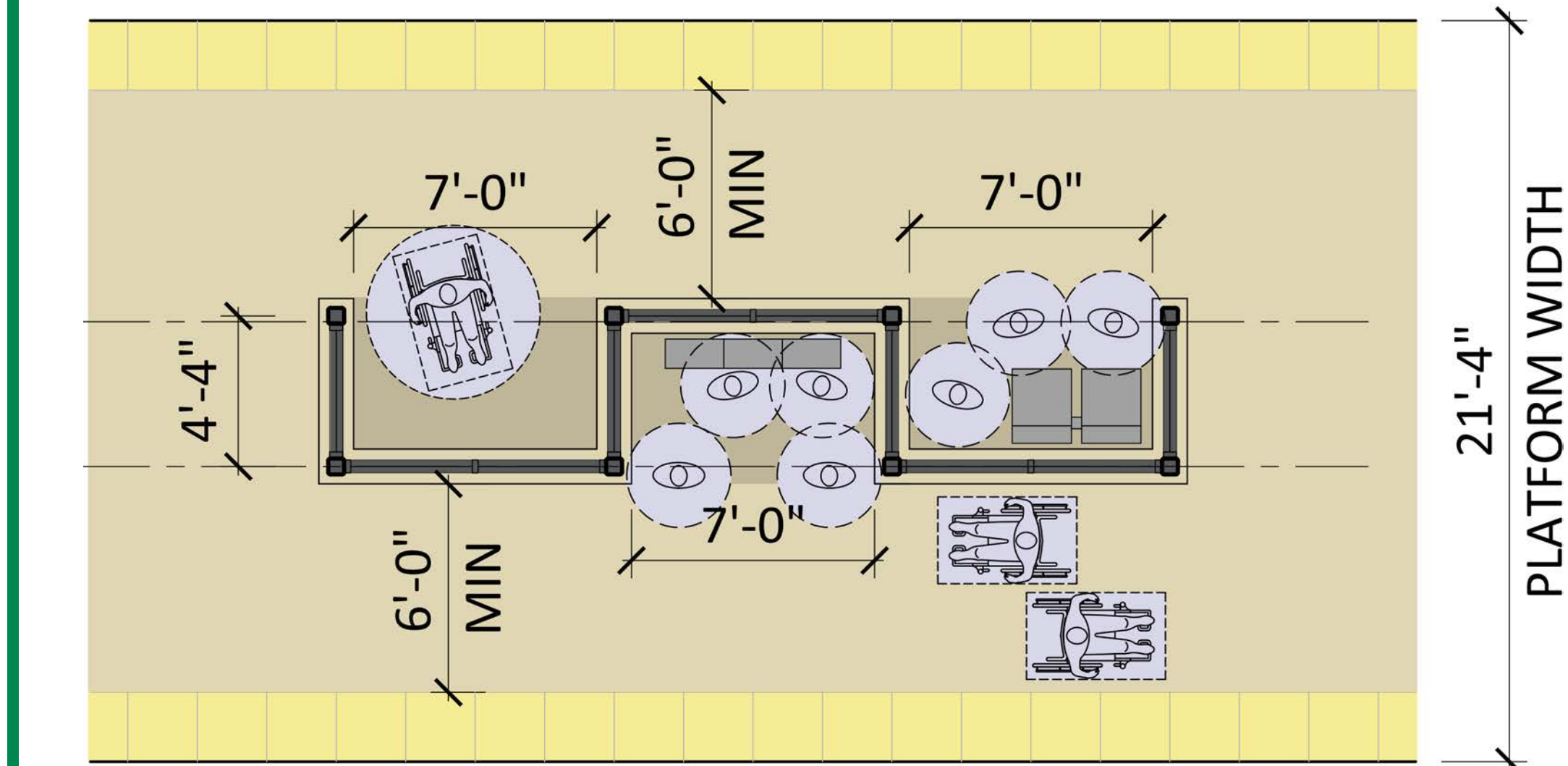
Station Design - Accessibility and Weather Protection

APRIL 2015

What Have We Heard?

- Provide sufficient shelter space for waiting passengers
- More benches, fewer leaning rails
- Promote easier circulation on platform

RECOMMENDED OPTION



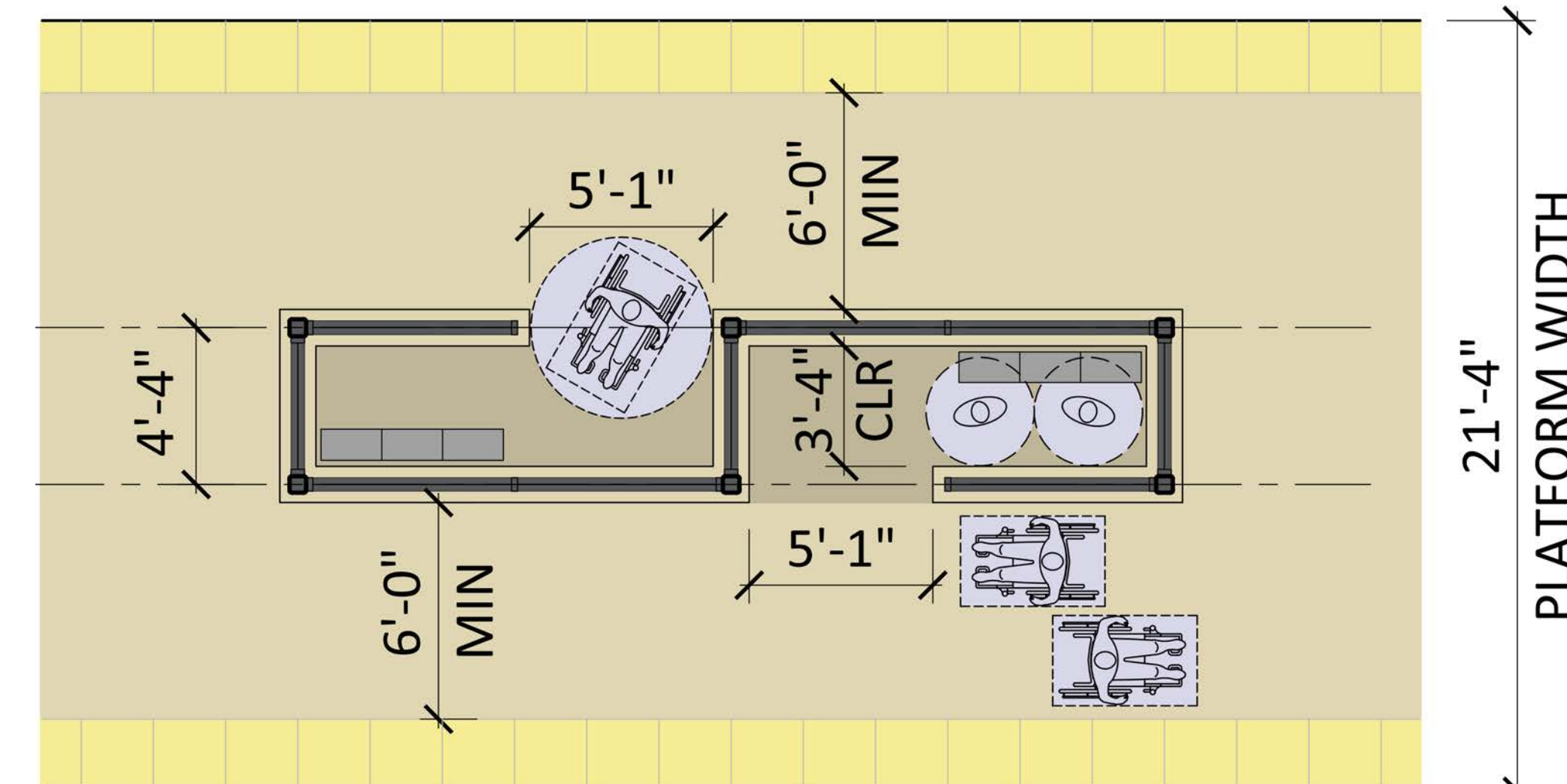
Option - Shelter Plan A

Pros

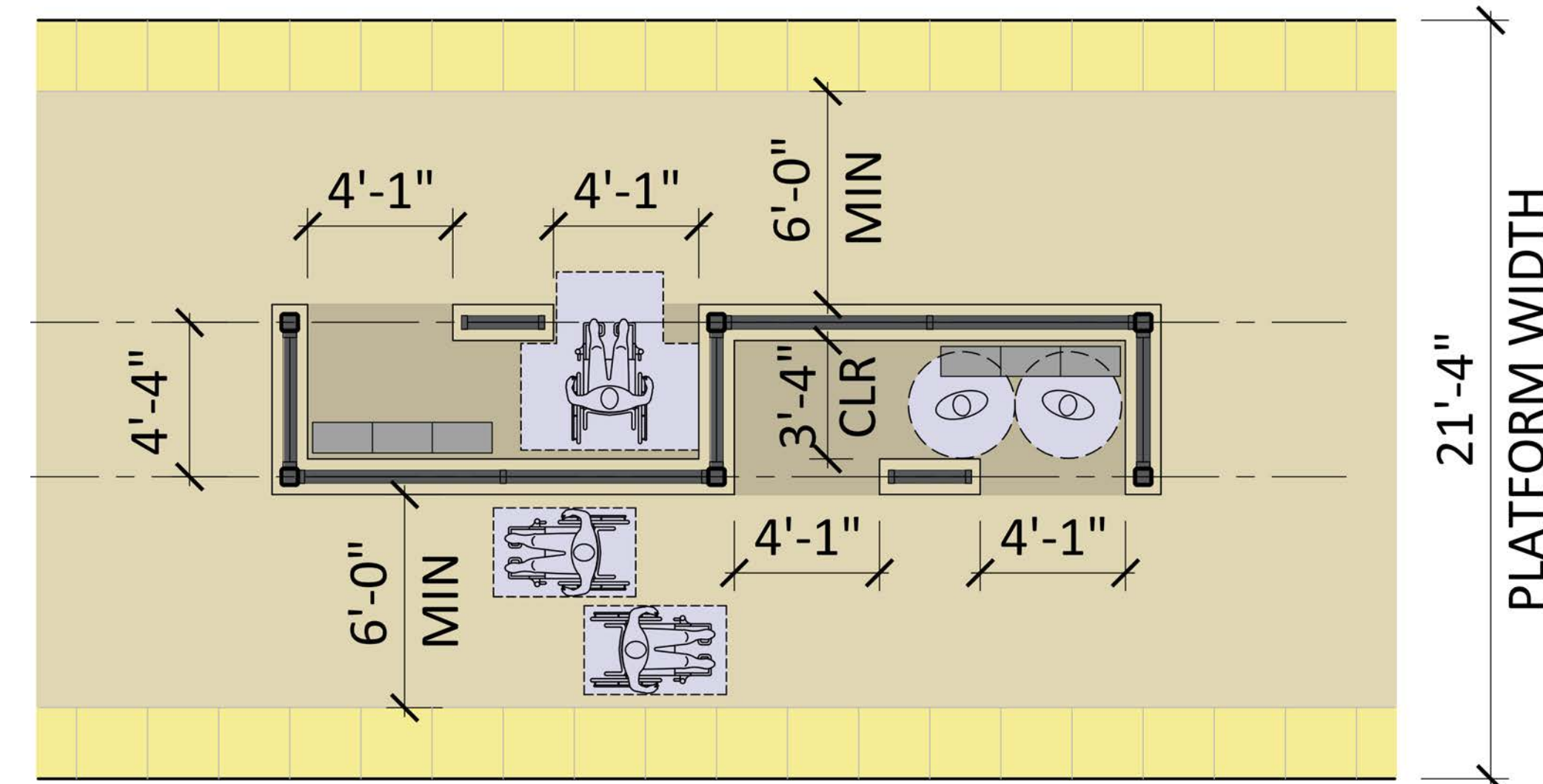
- Narrow shelter opening less susceptible to wind and weather, and provides denser heater coverage
- No barriers to prevent flow of people from shelters to the light rail vehicles
- 12 total shelters per platform
- More benches

Cons

- Narrow shelters allow for less personal space within shelters



Option - Shelter Plan B



Option - Shelter Plan C

Pros

- Narrow shelter opening less susceptible to wind and weather

Cons

- Front barrier prevents flow of people from shelters
- Interior shelter depth is too narrow to accommodate benches
- Personal safety may feel compromised in the trapped space created by the shelter
- Access is limited with only one opening
- 8 total shelters per platform

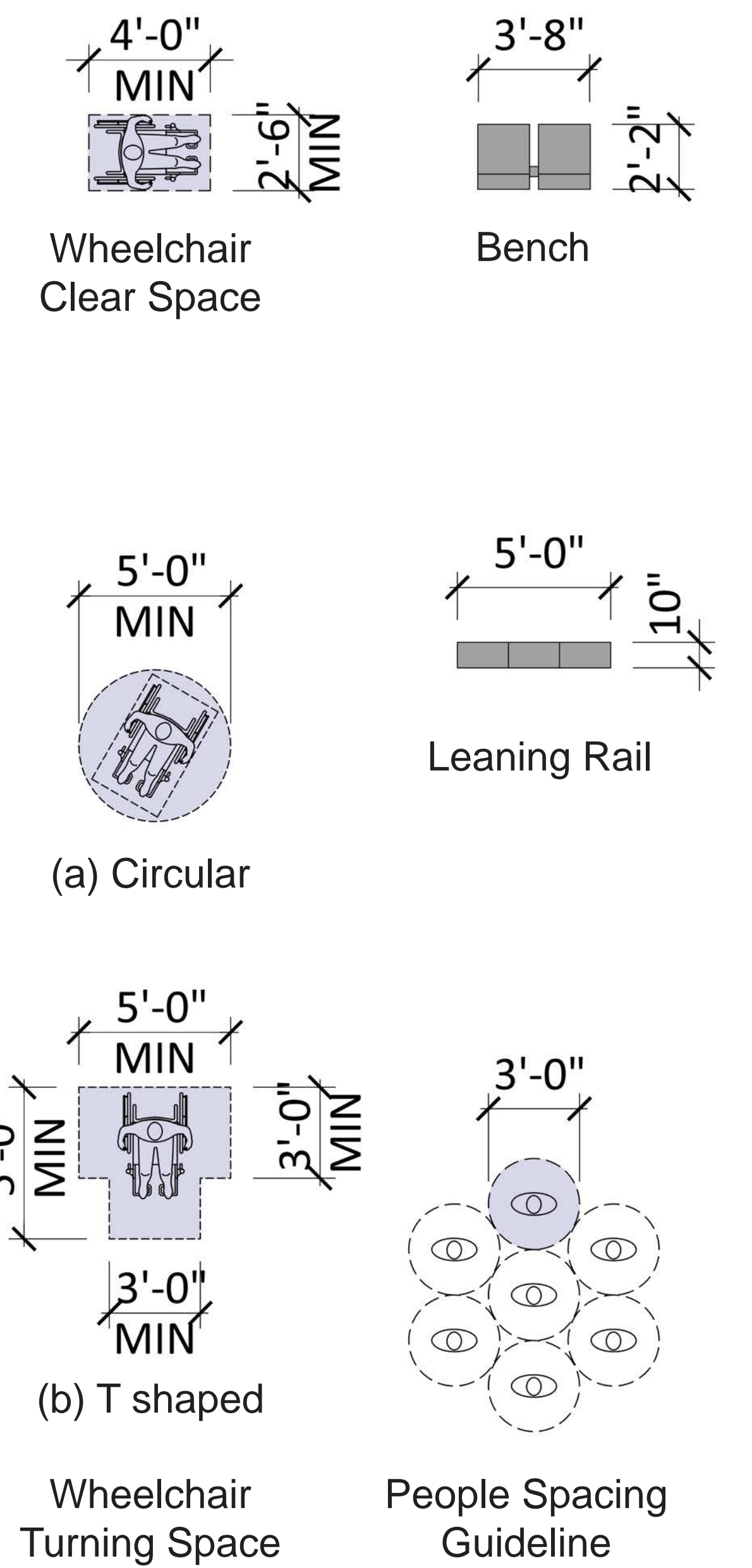
Pros

- Narrow shelter openings less susceptible to wind and weather

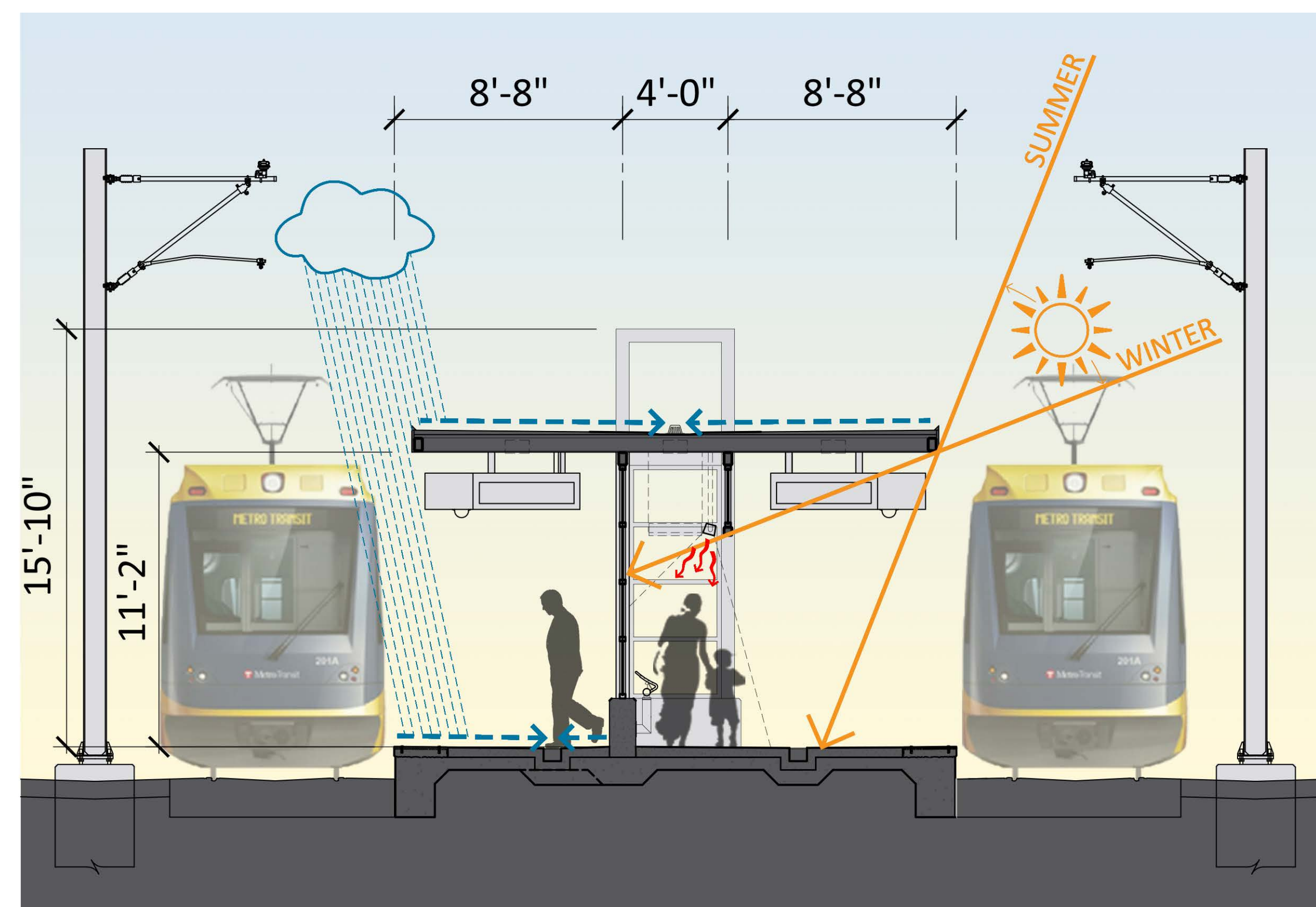
Cons

- Front barrier prevents flow of people from shelters
- Interior shelter depth is too narrow to accommodate benches
- 8 total shelters per platform

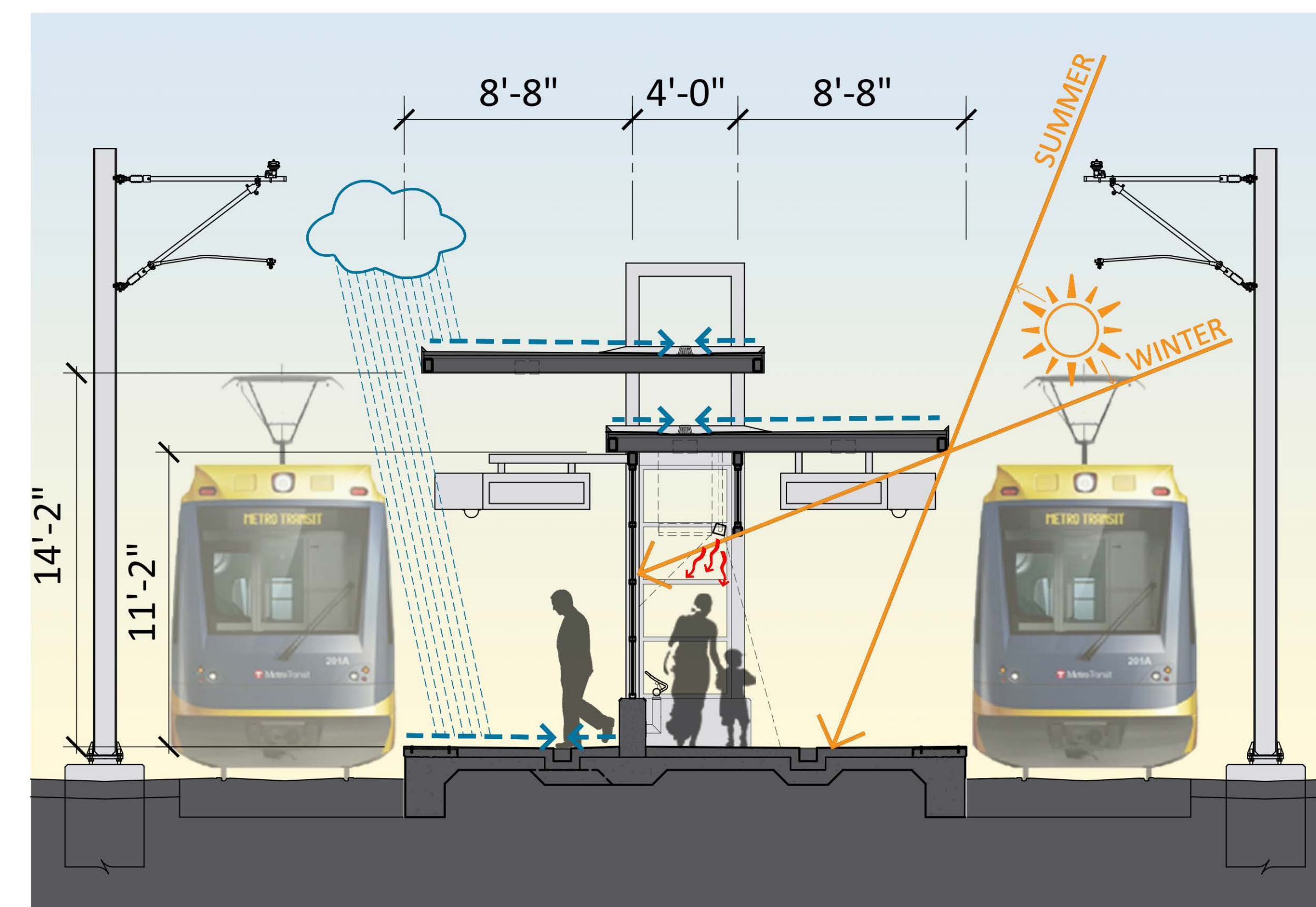
SYMBOL LEGEND



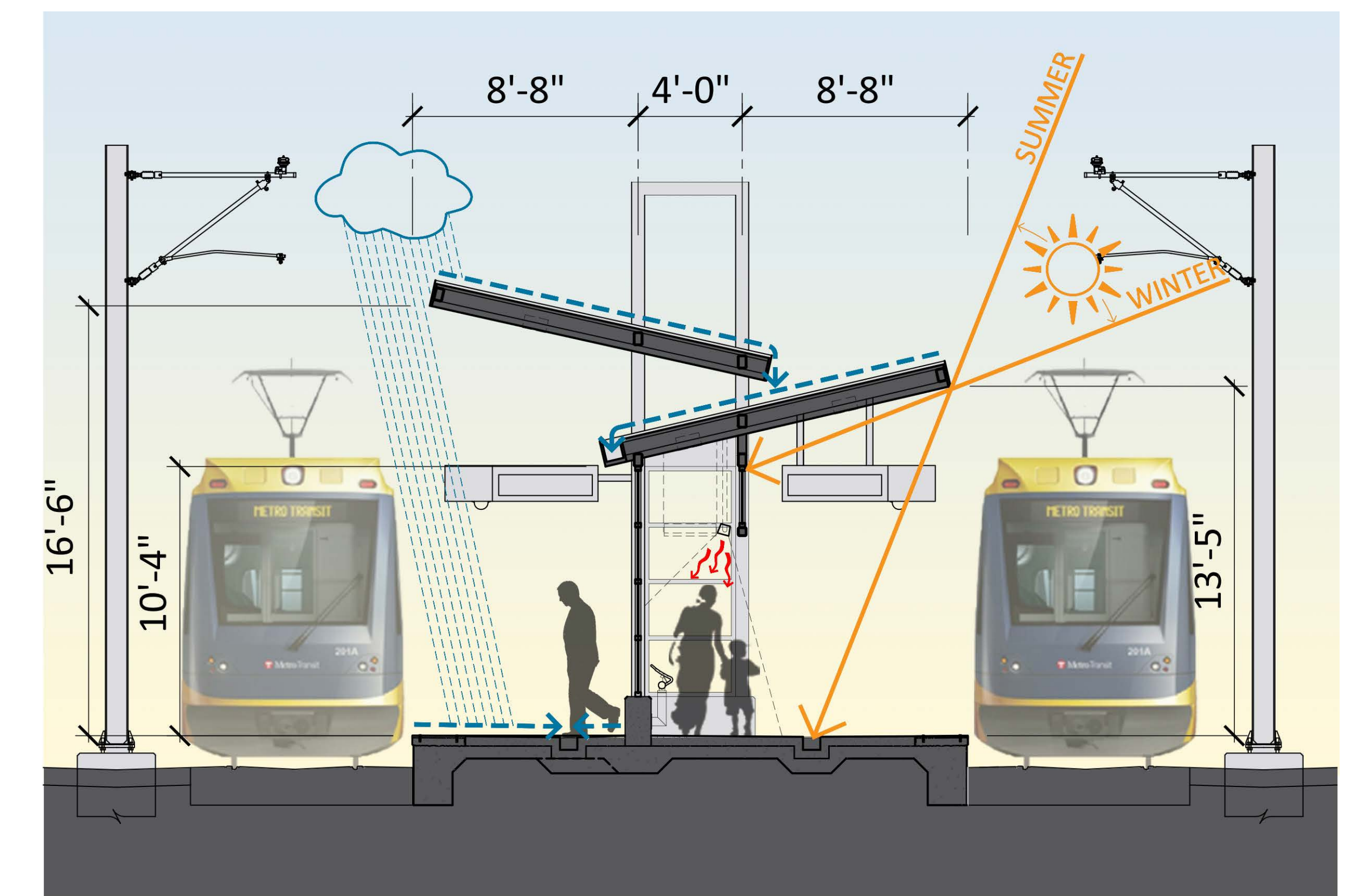
CANOPY VARIATIONS



Station Section with Flat Canopy



Station Section with Split and Flat Canopies



Station Section with Split and Sloped Canopies