

APRIL 2015

Station Area Character

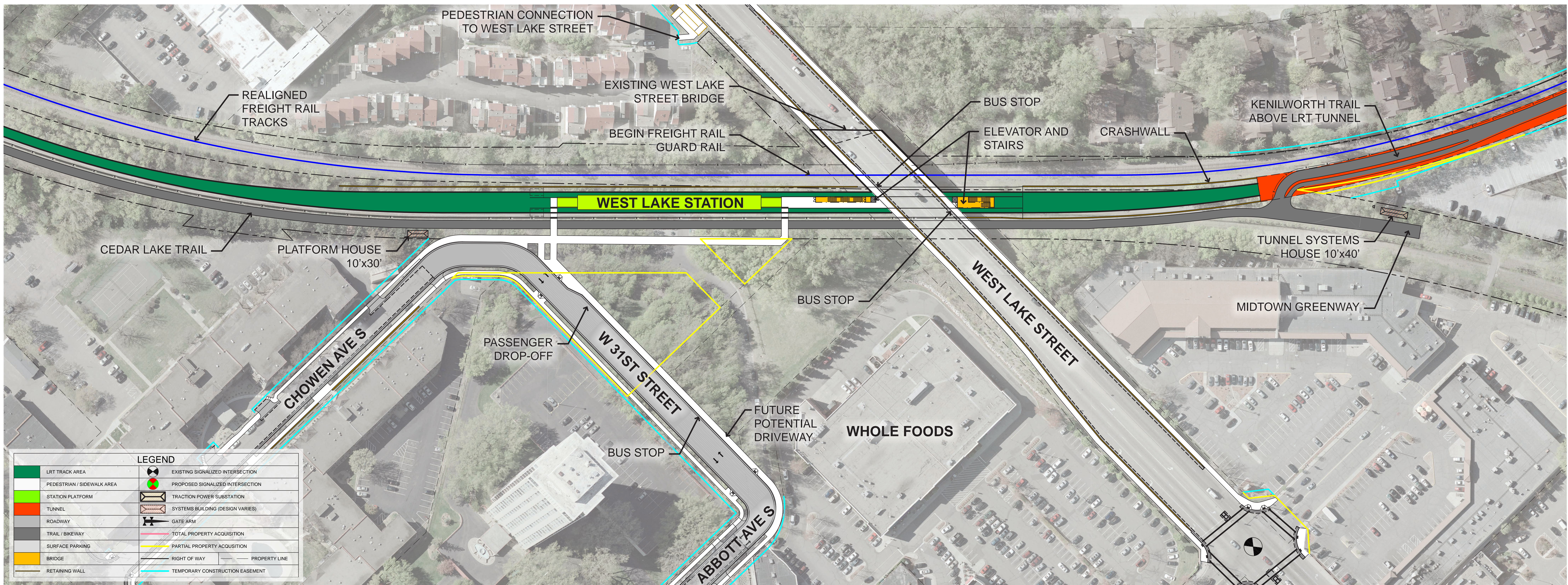
- Near dense multi-family and commercial areas with adjacent redevelopment anticipated
- Planned station access improvements including elevator and stairs from West Lake Street bridge
- Proposed bus connections near station and on the West Lake Street bridge
- Parallel to Cedar Lake Trail and freight rail tracks
- Planned street improvements for bus and passenger drop-off
- Proposed bike parking
- No park-and-ride planned



Cedar Lake Trail looking east toward station site with West Lake Street bridge in background.



Nearby apartments along Chowen Avenue South looking south.



Scale: 1" = 50' 0' 25' 50' 100'

21st Street Station Site

MINNEAPOLIS

APRIL 2015

Station Area Character

- Adjacent to single family neighborhood
- Station access improvements planned
- Bus connections near station on West 22nd Street
- Located between Kenilworth Trail and freight rail tracks, just east of East Cedar Beach
- No park-and-ride planned
- Proposed bike parking



East of 21st Street looking south toward the station site.



Nearby houses at Sheridan Avenue South looking north.



Station Area Character

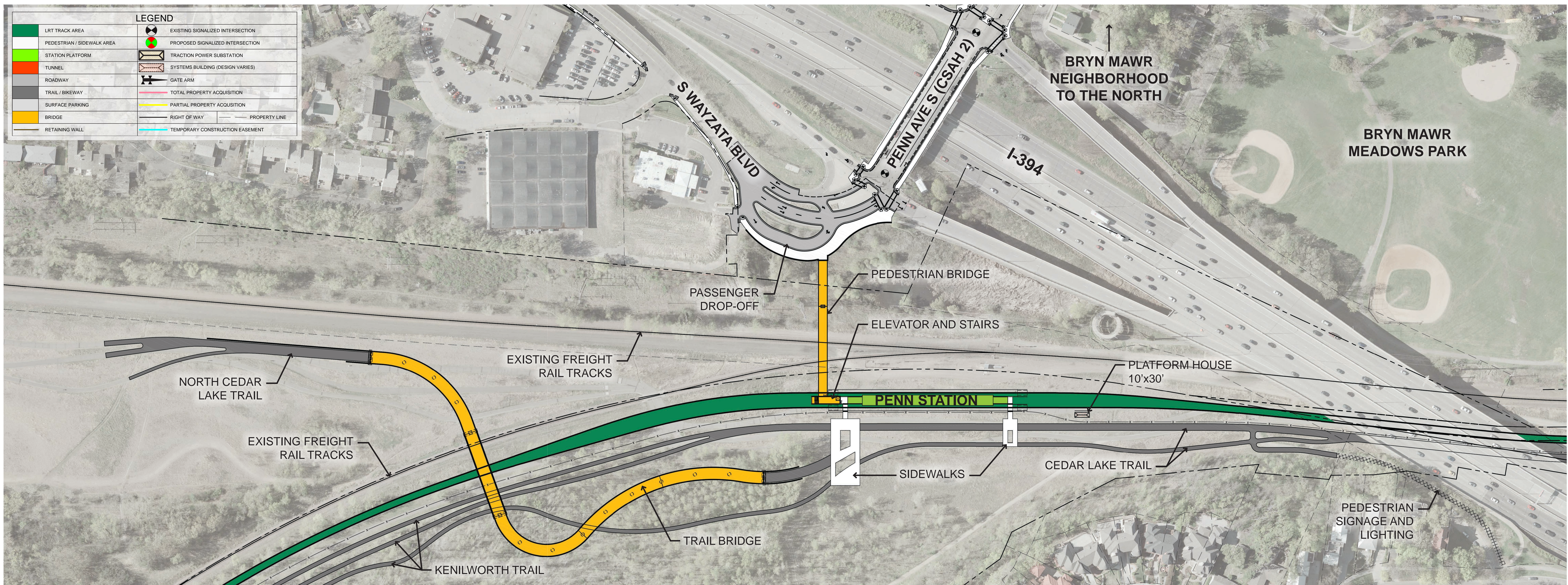
- Within a valley with open prairie landscape
- Planned station access improvements including pedestrian bridge, elevator, and stairs to access station from Penn Avenue South and Bryn Mawr neighborhood
- Near Cedar Lake and Kenilworth trails
- Proposed bridge connection from North Cedar Lake Trail to Cedar Lake Trail
- Proposed passenger drop-off and bike parking
- No park-and-ride planned



View from trail along Highway 394 looking south toward the station area.



Cedar Lake Trail looking south toward Kenwood Parkway bluff.



Scale: 1" = 70' 0' 25' 70' 140'

APRIL 2015

Station Area Character

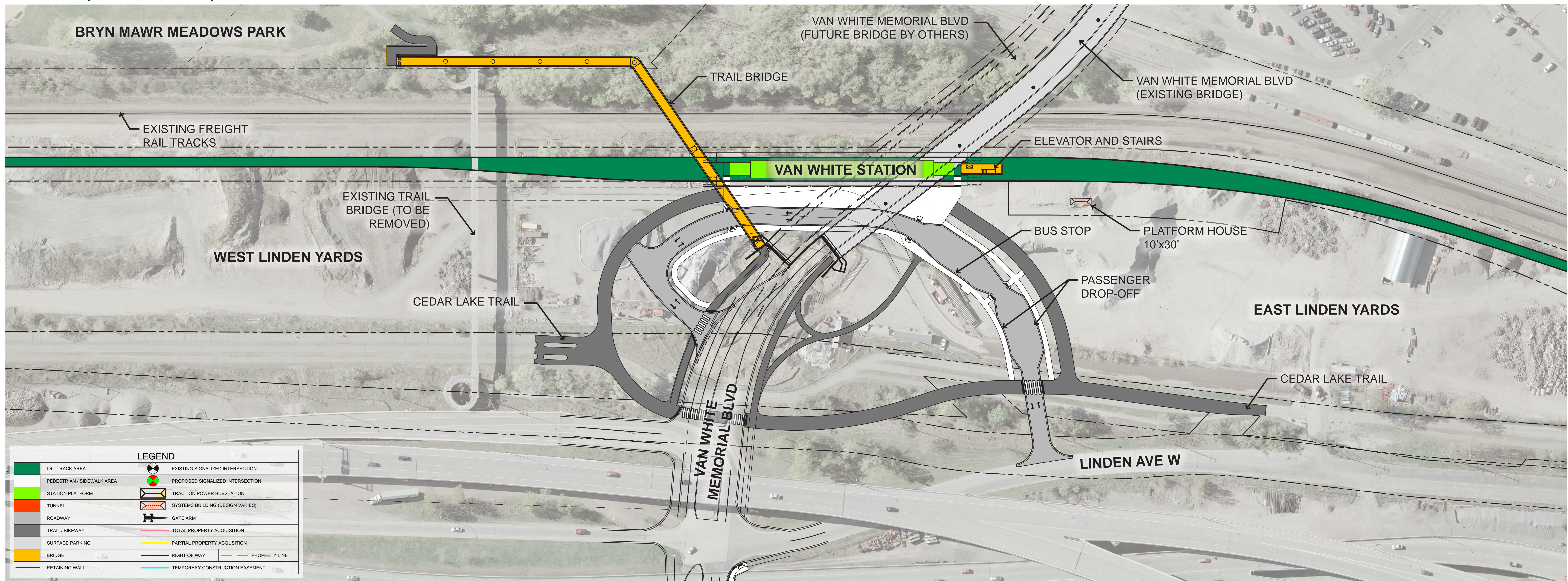
- Below the Van White Memorial Boulevard bridge with planned station access improvements including elevator and stairs from bridge
- Adjacent to established industrial, freight activities, and park land, and adjacent redevelopment anticipated
- Proposed bus connections near station
- Adjacent trails and new trail bridge over light rail and freight rail tracks to Bryn Mawr Meadows Park
- Proposed passenger drop-off and bike parking
- No park-and-ride planned



Cedar Lake Trail looking north toward the station site and existing Van White bridge.



Nearby Bryn Mawr Meadows Park.



Scale: 1" = 50' 0' 25' 50' 100'

Royalston Station Site

MINNEAPOLIS

APRIL 2015

Station Area Character

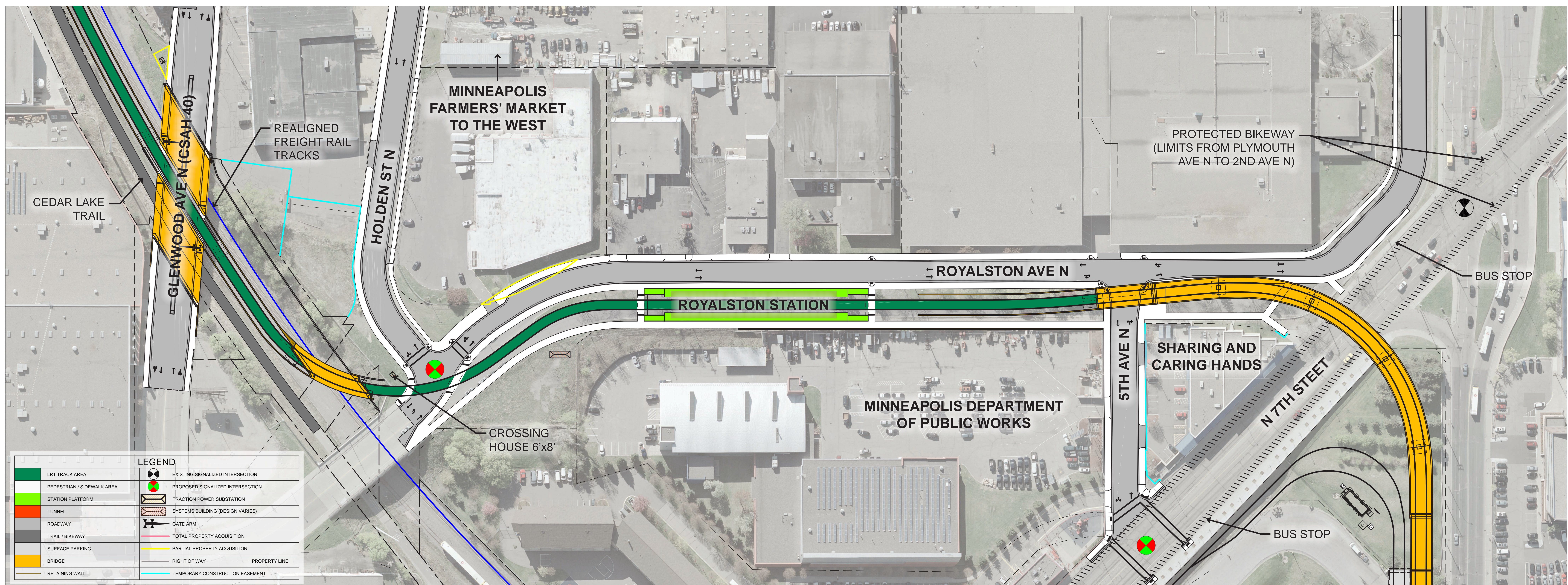
- Between Target Field and Minneapolis Farmers' Market in Minneapolis' North Loop Neighborhood and near downtown activities and services
- Station access improvements planned
- Proposed bus connections on North 7th Street/Olson Memorial Highway, on North 7th Street at 5th Avenue North and on Glenwood Avenue North at Royalston Avenue North
- Adjacent redevelopment anticipated
- No park-and-ride planned
- Proposed bike parking



Royalston Avenue North and Holden Street North looking north toward the station site.



Nearby Target Field.



Scale: 1" = 50' 0' 25' 50' 100'