



# Corridor Management Committee

December 6, 2023



EDEN PRAIRIE | MINNETONKA | EDINA | HOPKINS | ST. LOUIS PARK | MINNEAPOLIS

## Today's topics

- Approval of October 4, 2023 meeting minutes
- Metro Transit General Manager Lesley Kandaras
- Project Update
- Public Involvement
- DBE/Workforce update

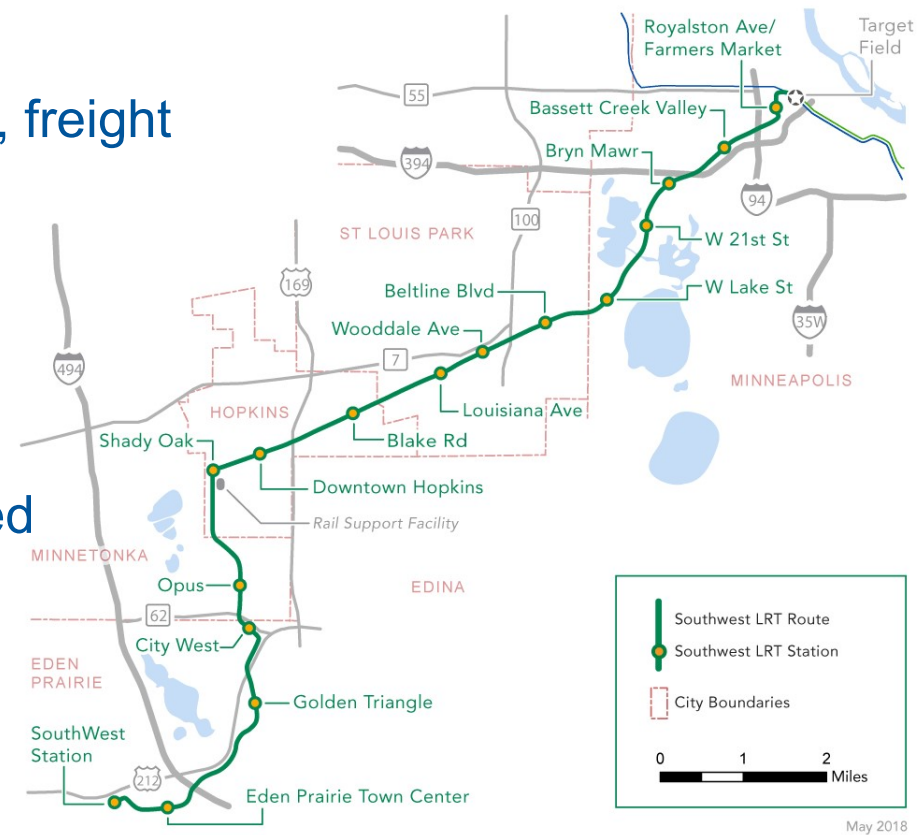


# Project Update

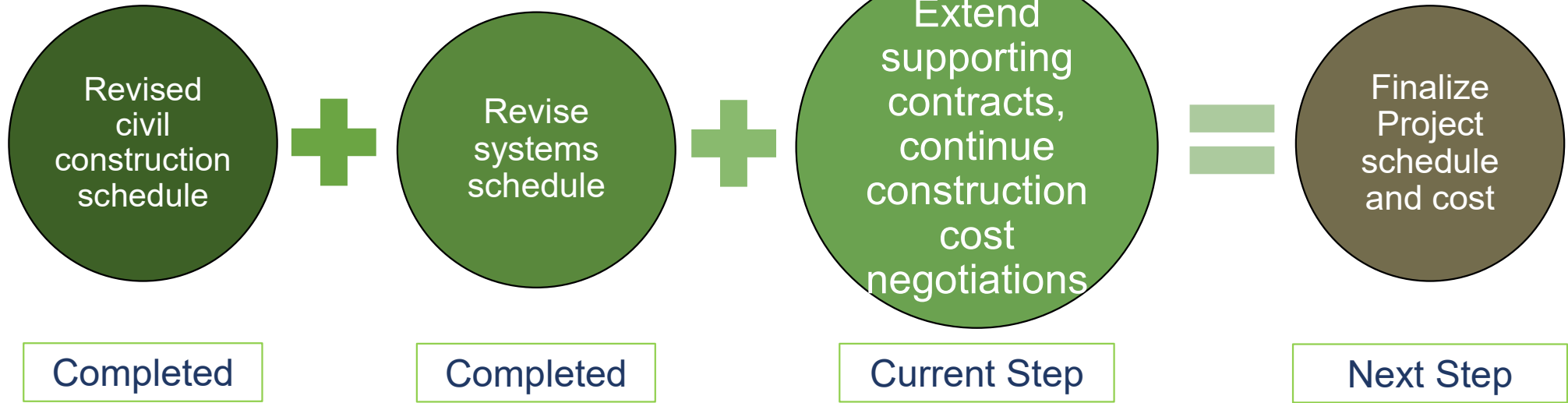
Jim Alexander  
Green Line Extension Project Director

# Project scope

- 16 new LRT stations
- 44 significant structures:
  - 29 new bridges: LRT, pedestrian, roadway, freight
  - 7 existing bridges with modifications
  - 6 pedestrian tunnels
  - 2 cut and cover LRT tunnels:
    - Highway 62: 582 feet
    - Kenilworth: 2,236 feet
- 15 at-grade LRT crossings; including 5 shared crossings with freight rail
- 121 retaining walls
- LRT track: 14.5 miles
- 7.8 mi shared LRT & freight rail corridor
- Freight rail reconstruction
- Trail reconstruction



# Project schedule and cost



- **Current Step:**




- Council will participate in an FTA risk workshop in December to discuss a new Project estimate based on anticipated additional contingency required by the FTA. A new Project budget will be adopted by early 2024 following FTA's review.

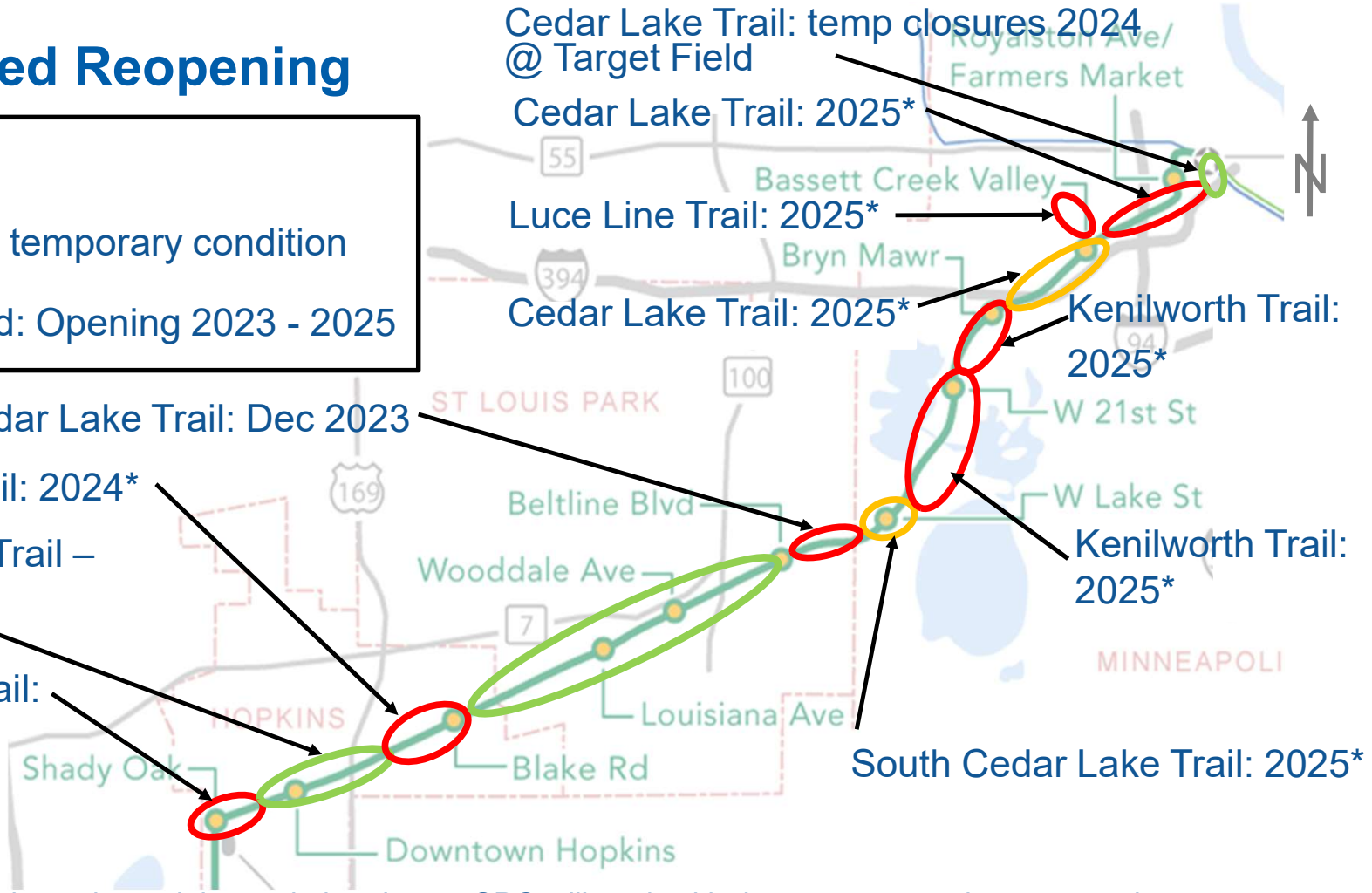
# Construction workers

- Putting people to work:
  - 4,488 individuals working on the project through October 2023
    - 3,625 reside in Minnesota
    - Employing folks from 80% of counties statewide
  - \$248.6 million billed by Disadvantage Business Enterprise companies (22%) for construction activities through Sept. 2023, exceeding the overall goal of 15%
  - Project reinvesting in communities throughout the Twin Cities and State



# Trails: Anticipated Reopening

	Currently open
	Currently open: temporary condition
	Currently closed: Opening 2023 - 2025



Cedar Lake Trail: temp closures 2024 @ Target Field

Cedar Lake Trail: 2025\*

Luce Line Trail: 2025\*

Cedar Lake Trail: 2025\*

Kenilworth Trail: 2025\*

Kenilworth Trail: 2025\*

South Cedar Lake Trail: Dec 2023

South Cedar Lake Trail: 2024\*

Minnesota River Bluffs Trail – 11<sup>th</sup> Ave to Depot

Minnesota River Bluffs Trail: 2024\*

Opus Area Trails (south of map): **open**

South Cedar Lake Trail: 2025\*

\*Based on current Civil construction substantial completion dates. SPO will work with the contractor to improve on these opening dates, where possible. See [GreenLineExt.org](http://GreenLineExt.org) for detour routes.

# \$2.8+ Billion in Permitted & Constructed Community Development

**Elevate - SouthWest Station, Eden Prairie**



**Via Sol – Wooddale Station, St. Louis Park**



**Minnetonka Station - Opus Station, Minnetonka**



**Corsa - Beltline Station, St. Louis Park**





# \$2.8+ Billion in Permitted & Constructed Community Development

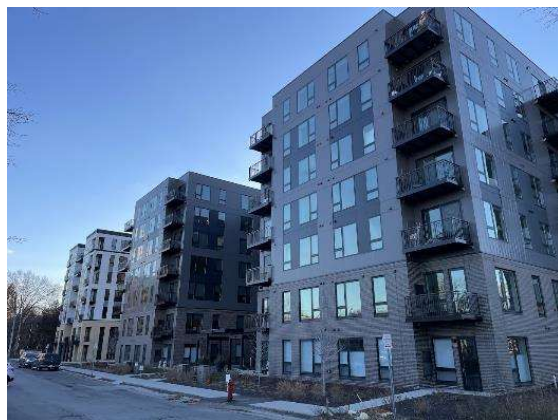
Hallon - Blake Road Station, Hopkins



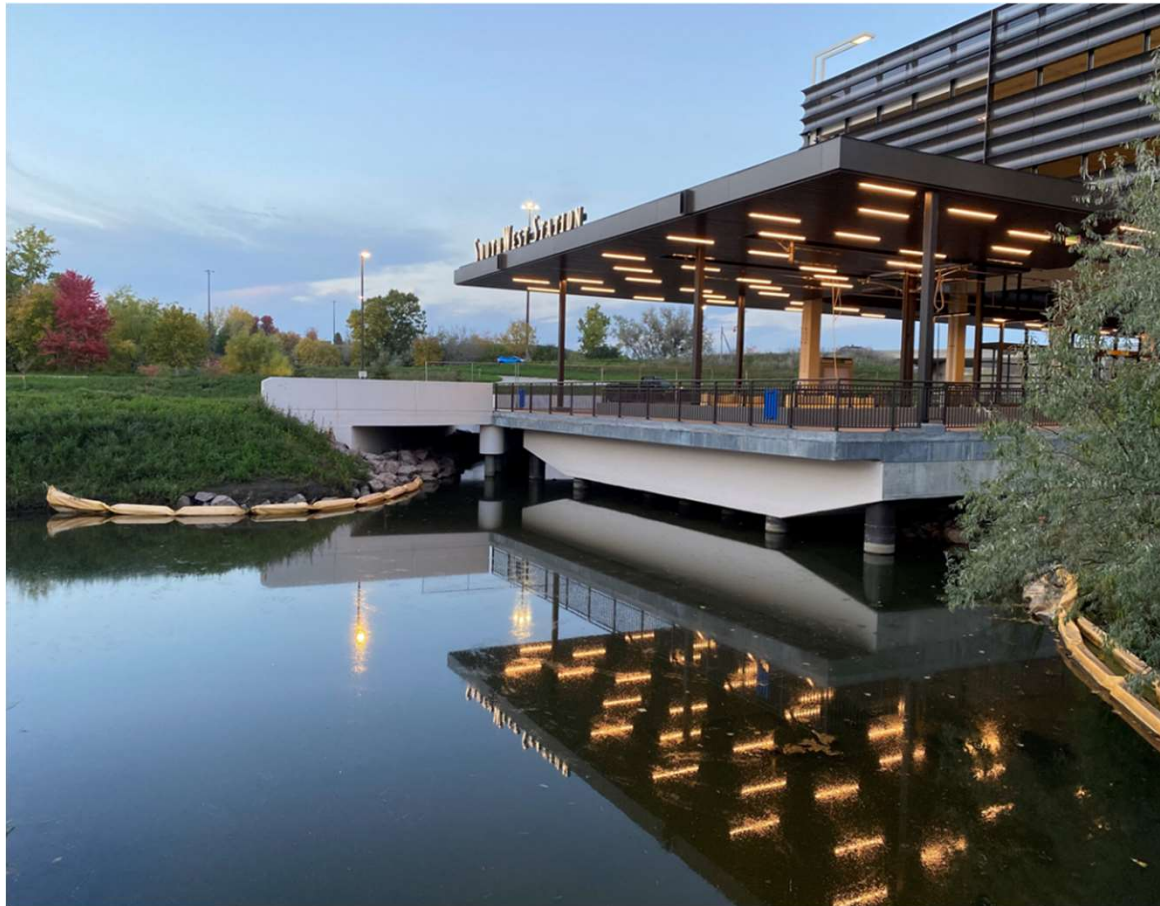
Chorus - Blake Road Station, Hopkins



West Lake Quarter - West Lake Station, Minneapolis



## Bus loop bridge at Southwest Station in Eden Prairie



# Grading, drainage, trails, and asphalt entrances at SouthWest Station in Eden Prairie



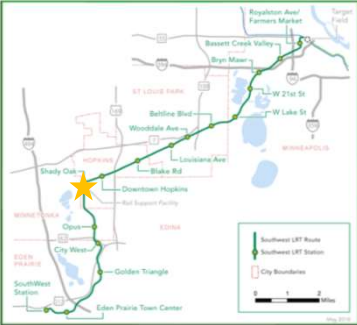
# Grading and asphalt entrances at SouthWest Station in Eden Prairie



# Drainage pond construction adjacent to Minnetonka/Hopkins LRT Bridge



# 5th Street South and K-Tel Drive at grade crossing in Hopkins/Minnetonka



# Grading, curb, and gutter at 17<sup>th</sup> Avenue South extension and Shady Oak Park and Ride in Hopkins

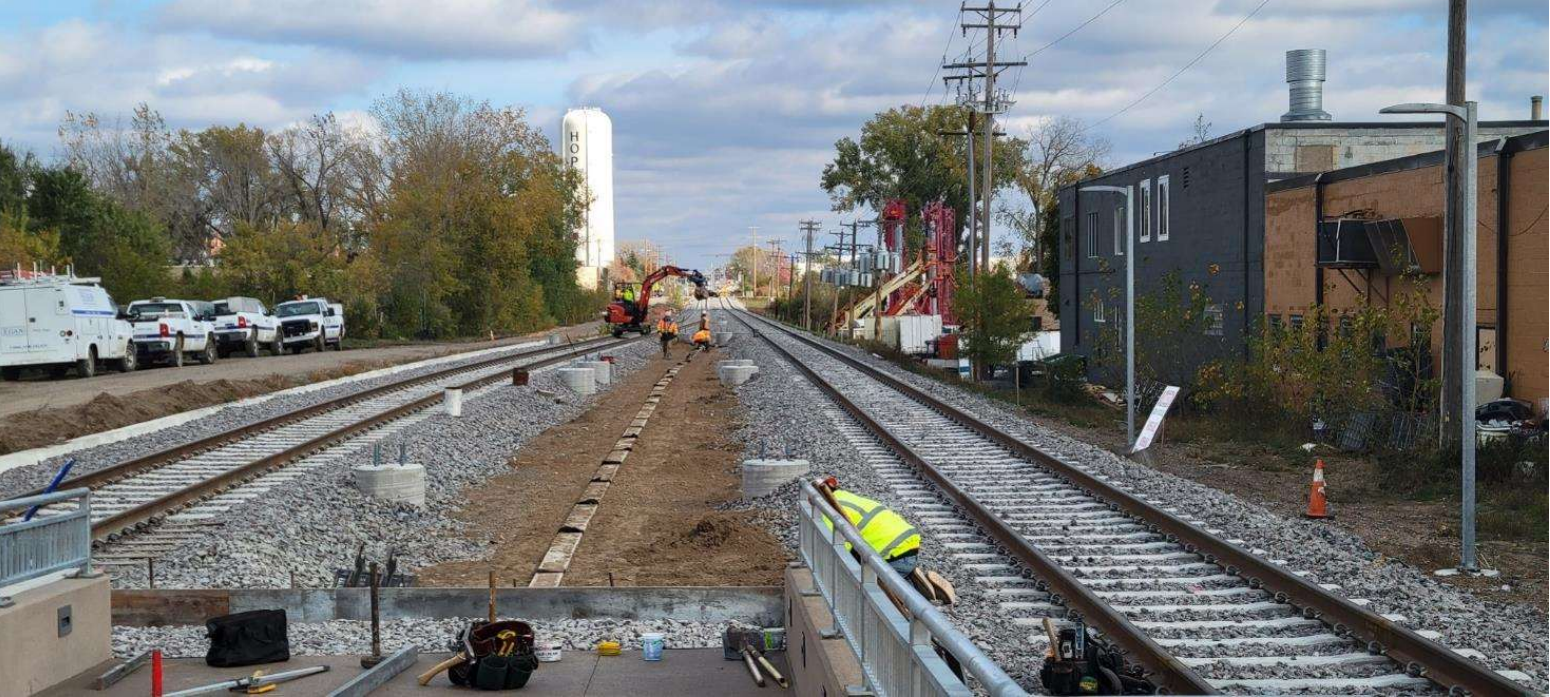


# Shady Oak Station in Hopkins





# LRT track adjacent to Shady Oak Station in Hopkins



# LRT track at Excelsior LRT Bridge, Hopkins



# Blake Road Station and park-and-ride lot in Hopkins



# Minnehaha Creek pedestrian, freight rail and LRT bridges



# Louisiana Avenue Station in St. Louis Park



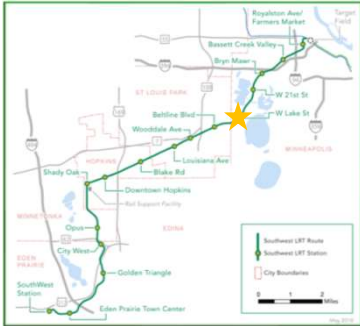
# LRT track at Louisiana Avenue Station in St. Louis Park



# Pedestrian crossing at Louisiana Avenue Station in St. Louis Park



# West Lake Street Station in Minneapolis

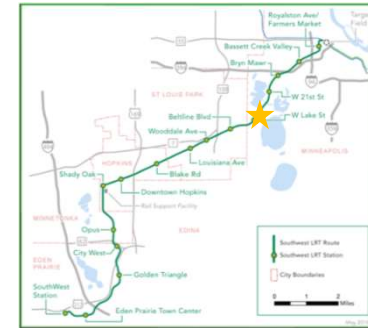




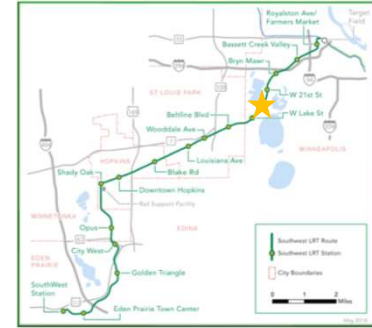
# West vertical circulation & mechanical room at West Lake Street Station in Minneapolis



# East vertical circulation at West Lake Street Station in Minneapolis



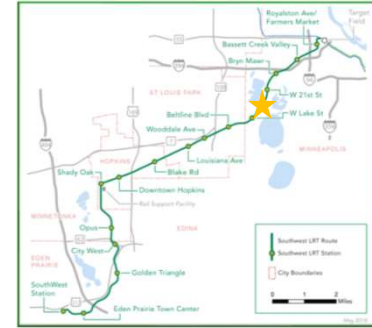
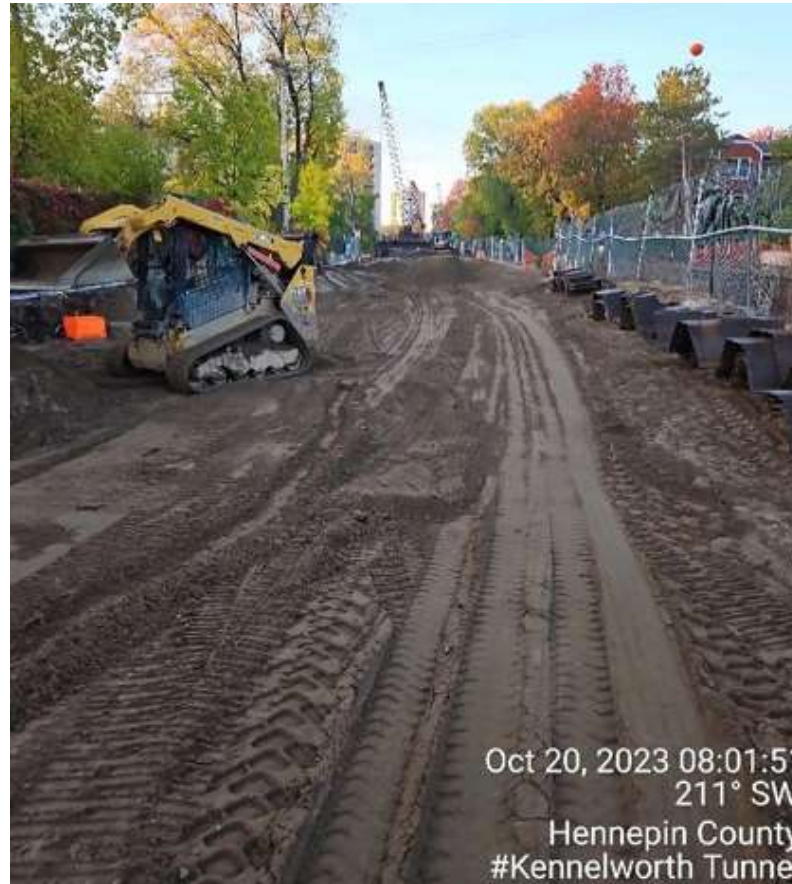
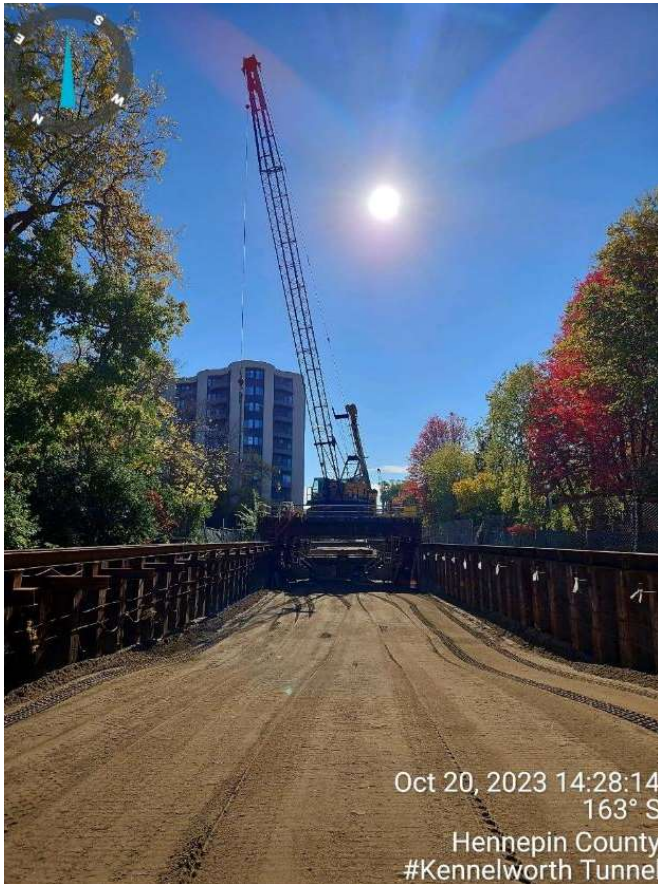
# Kenilworth LRT Tunnel in Minneapolis



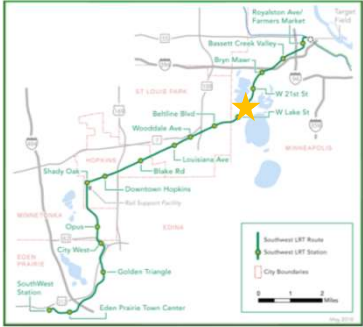
# Kenilworth LRT Tunnel in Minneapolis



# Backfill over the Kenilworth LRT Tunnel in Minneapolis.



# Sheet pile cutting/removal over the Kenilworth LRT Tunnel in Minneapolis



# Kenilworth LRT Tunnel in Minneapolis

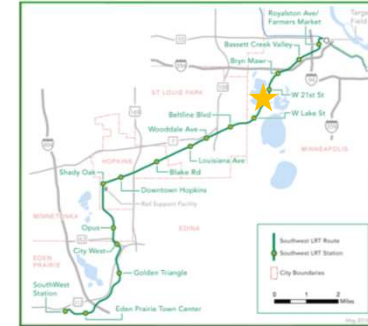


# Wall and roof rebar at Kenilworth LRT Tunnel in Minneapolis

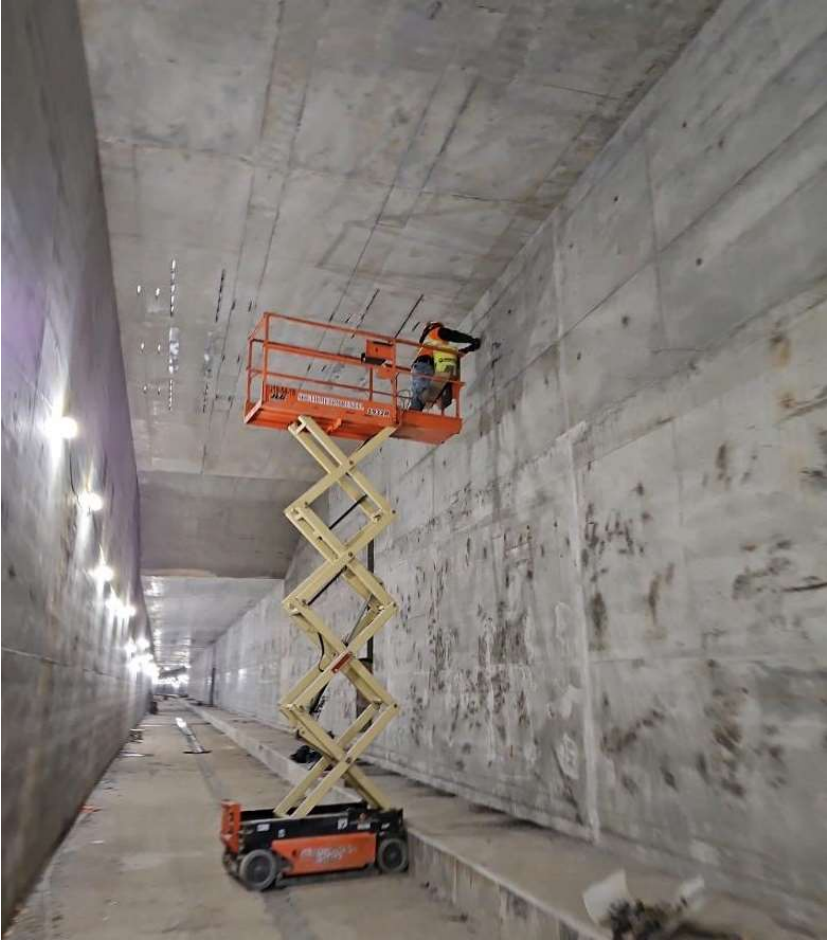




# Base slab rebar at the Kenilworth LRT Tunnel in Minneapolis



# Kenilworth LRT Tunnel in Minneapolis



# Intersection roadway adjacent to West 21st Street Station



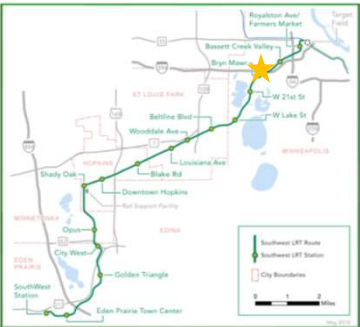
# Bryn Mawr Station in Minneapolis



# Passenger drop-off area at Bryn Mawr Station in Minneapolis



# Vertical Circulator at Bryn Mawr Station in Minneapolis



# Corridor protection barrier construction near Bassett Creek Valley Station

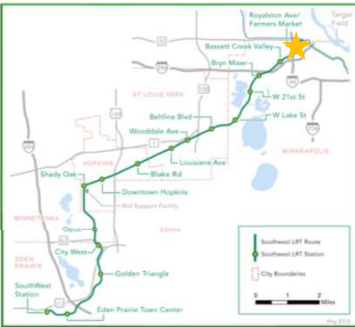


# Vertical Circulator at Bassett Creek Valley Station in Minneapolis





# Glenwood Avenue Bridges in Minneapolis



# Royalston Avenue adjacent to Royalston Avenue / Farmer's Market Station in Minneapolis



# Royalston Avenue / Farmer's Market Station in Minneapolis



# 5th Avenue/7th Street LRT Bridge in Minneapolis



# Systems Contract Work

# SouthWest Station Interlocking switch machines, switch heaters, and OCS wire installed



# Technology Drive grade crossing flasher cantilever installation



# Golden Triangle Station communication equipment (speakers, CCTV camera) install





# OCS wire runs installed from SouthWest Station to City West Station



# TH-62 LRT tunnel grounding wire and metal clad lighting cable installed at cross passage door



# TPSS 308 installation



# Public Involvement

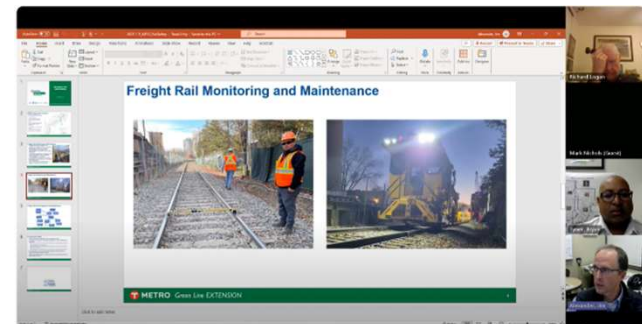
David Davies  
Public Involvement Manager

# Public Involvement

- Continuing periodic tours and events
- Focus: coordination with property owners as work transitions to winter



*University of St. Thomas engineering student tour at City West Station*



*2023 Minneapolis Freight Rail Safety Meeting (virtual)*

# Disadvantaged Business Enterprise Update

Jon Tao

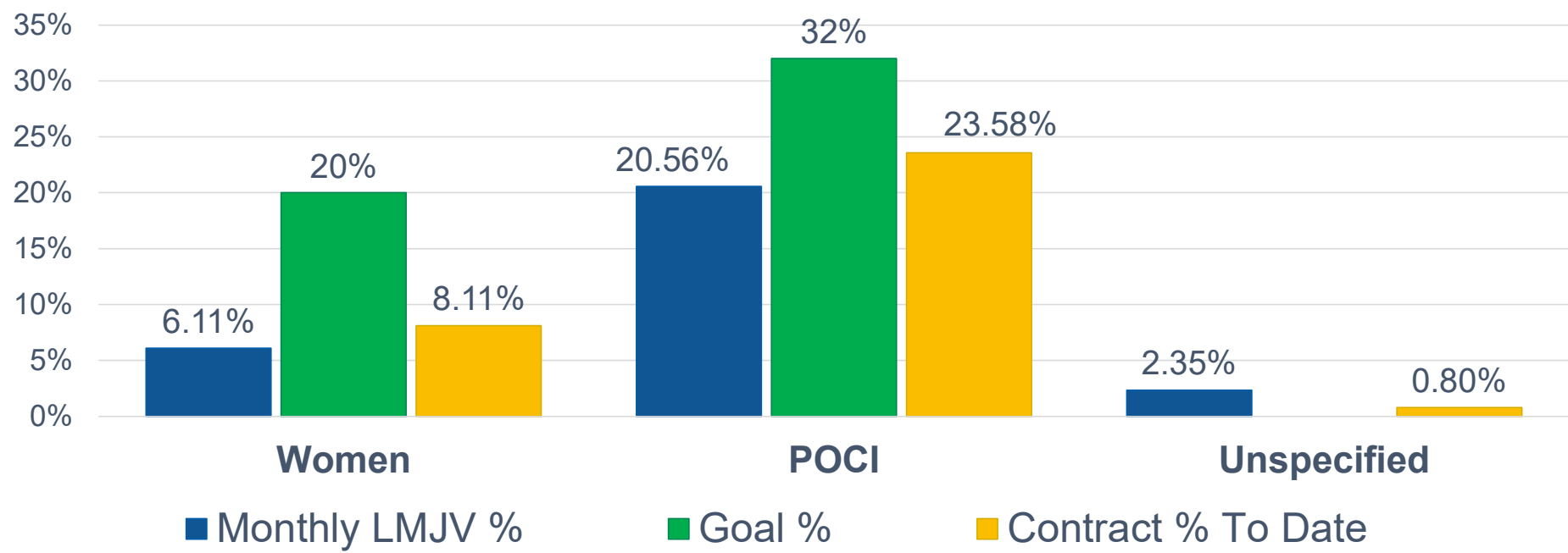
Senior Small Business Specialist  
Office of Equity & Equal Opportunity

# DBE Achievement as of Sept 30, 2023

Contractor	Contract Description	Contract Amount	Contractor Billed to Date	DBE Billed to Date	% DBE to Date	As of Date
LMJV 16% Goal	Civil	\$1,043,392,388	\$931,943,076	\$218,486,834	23.4%	9/30/23
APJV 12% Goal	Systems	\$209,159,681	\$139,312,401	\$23,579,794	16.9%	9/30/23
	Closed Contracts	\$41,626,766	\$41,626,766	\$6,539,604	15.7%	
		<b>Contract Amount</b>	<b>Billed to Date</b>	<b>DBE Billed to Date</b>	<b>% DBE to Date</b>	
	15% Goal	\$1,294,178,835	\$1,112,882,243	\$248,606,232	22.3%	

# Civil Workforce Participation Percentage\*

- September 2023: 59,336 hrs.
- Civil Construction Total: 2,990,627 hrs.

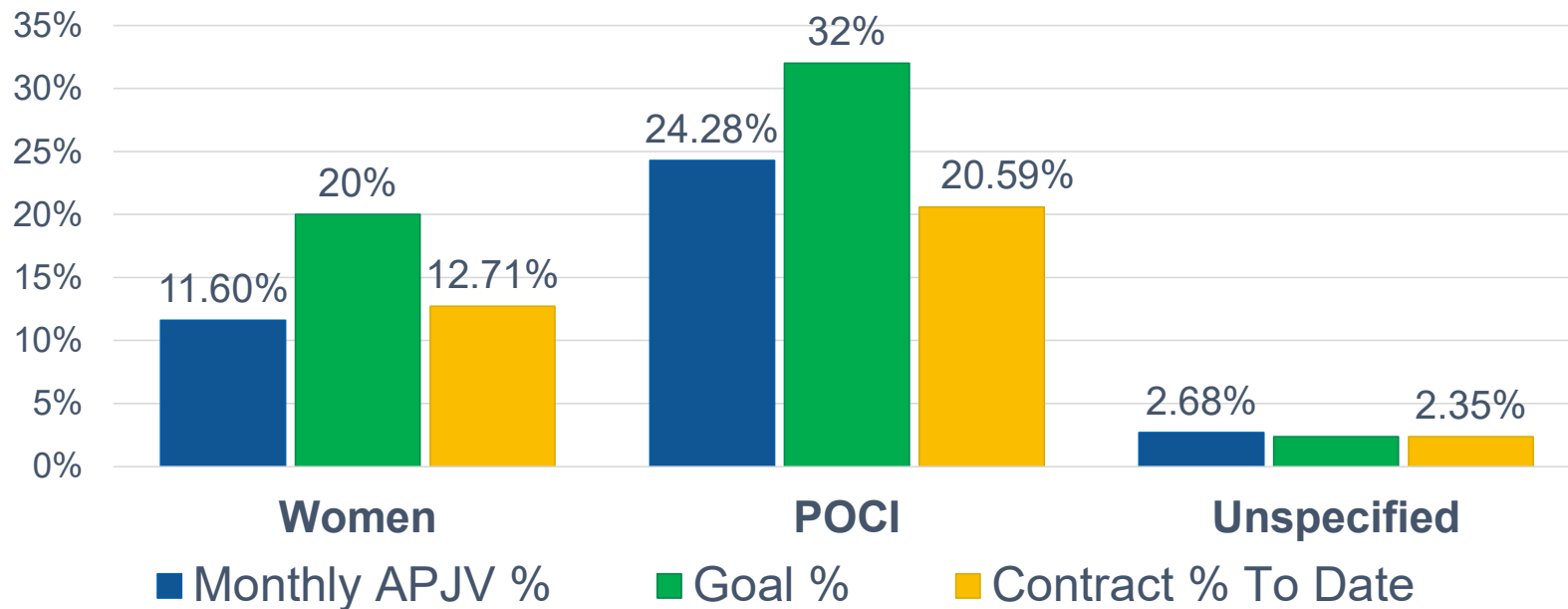


\*Based on MDHR Workforce Report for September 2023  
People of Color/Indigenous (POCI)



# Systems Workforce Participation Percentage\*

- September 2023: 5,552 hrs.
- Systems Construction Total: 45,311 hrs.



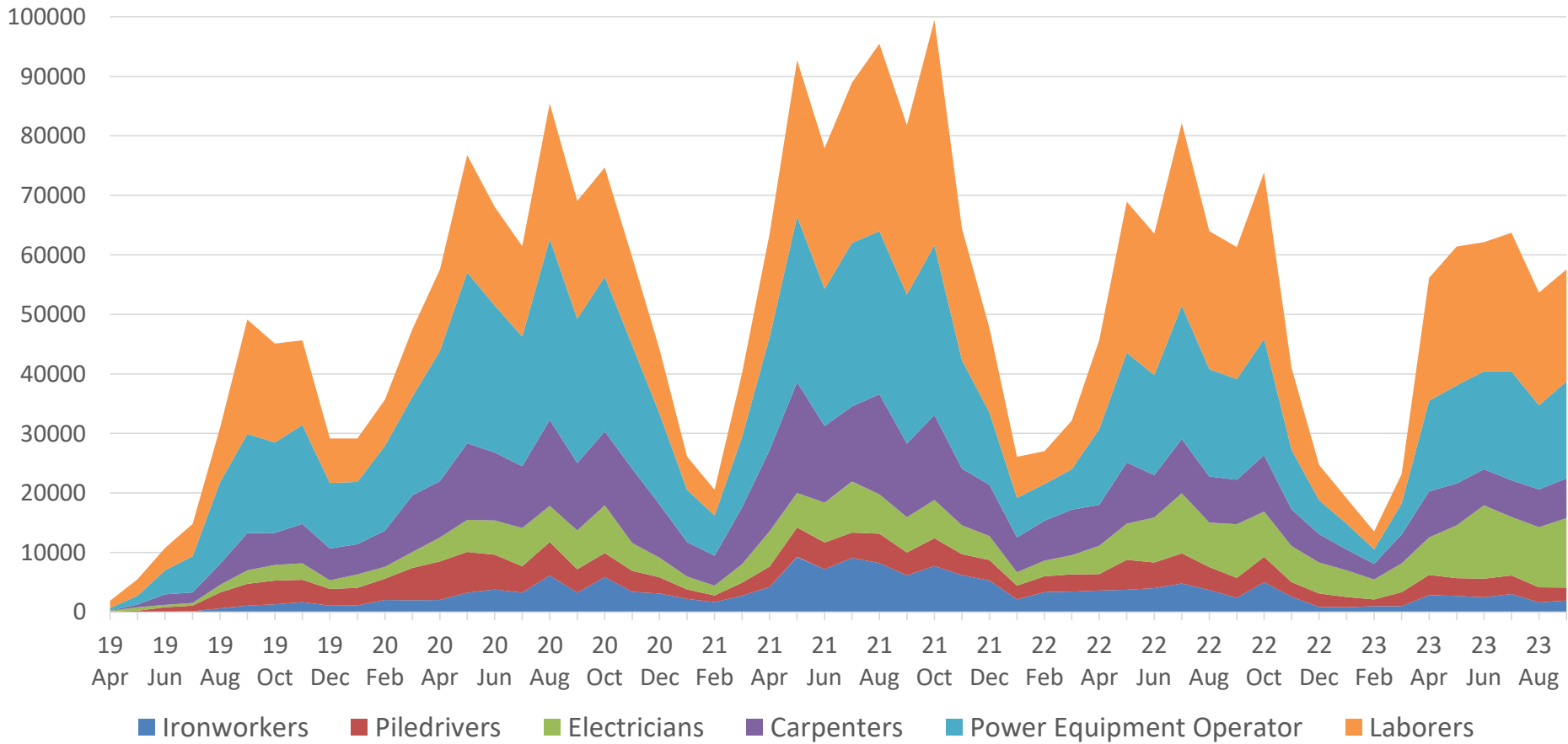
\*Based on MDHR Workforce Report for September 2023  
People of Color/Indigenous People (POCI)

# Construction Trades Hours to Date

Building Trade	Hours*	Percentage
Laborers	854,528	28.1%
Power Equipment Operator	845,420	27.8%
Carpenters	435,073	14.3%
Electricians	274,780	9.1%
Piledrivers	180,609	5.9%
Ironworkers	172,067	5.7%
Cement Masons	74,727	2.5%
Truck Drivers	73,171	2.4%
Painters	33,029	1.1%
Sheet Metal Workers	19,768	0.7%
Plumbers	14,656	0.5%
Roofer	14,465	0.5%
Other Misc. Trades	43,644	1.4%
<b>Grand Total</b>	<b>3,035,937</b>	

\*Based on data pulled from LCP Tracker on 10/12/2023.

# Major Trades Utilization Over Time



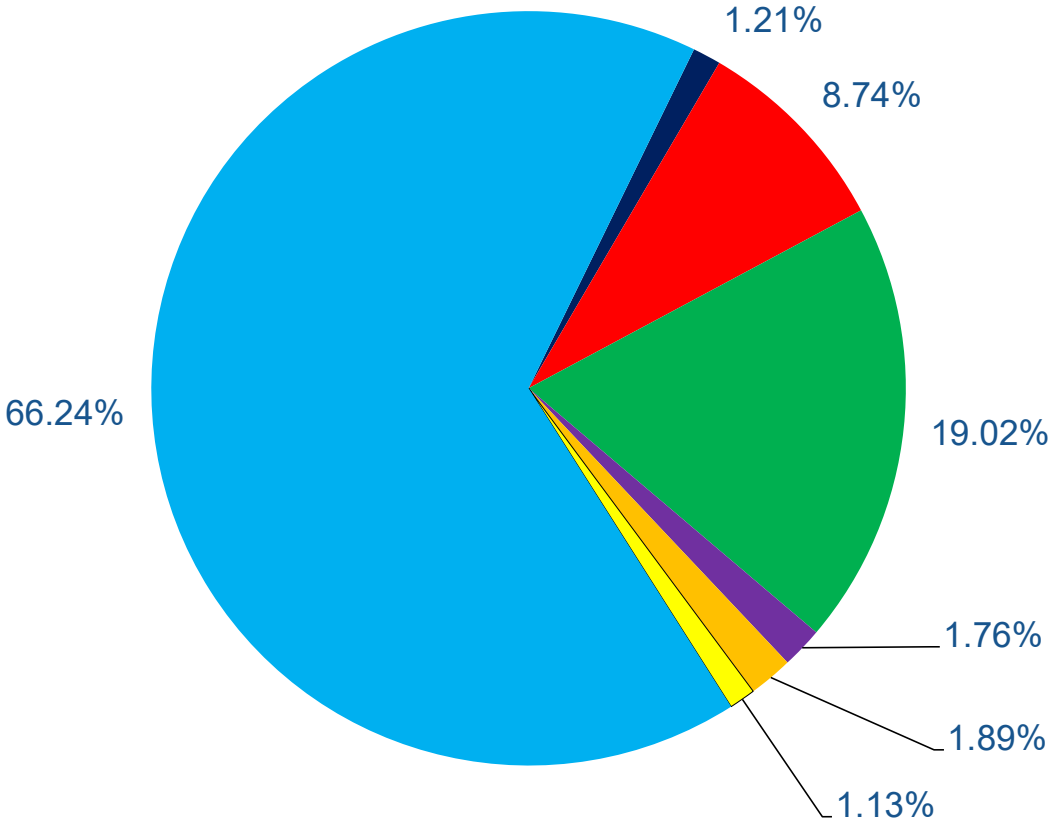
\*Based on data pulled from LCP Tracker on 10/12/2023.

# Laborers Demographics

## Participation Percentage

- Women: 8.09%
- POCI Women: 3.47%
- POCI: 32.63%

- ASIAN
- AFRICAN AMERICAN
- HISPANIC
- OTHER
- NATIVE AMERICAN
- NOT SPECIFIED
- CAUCASIAN



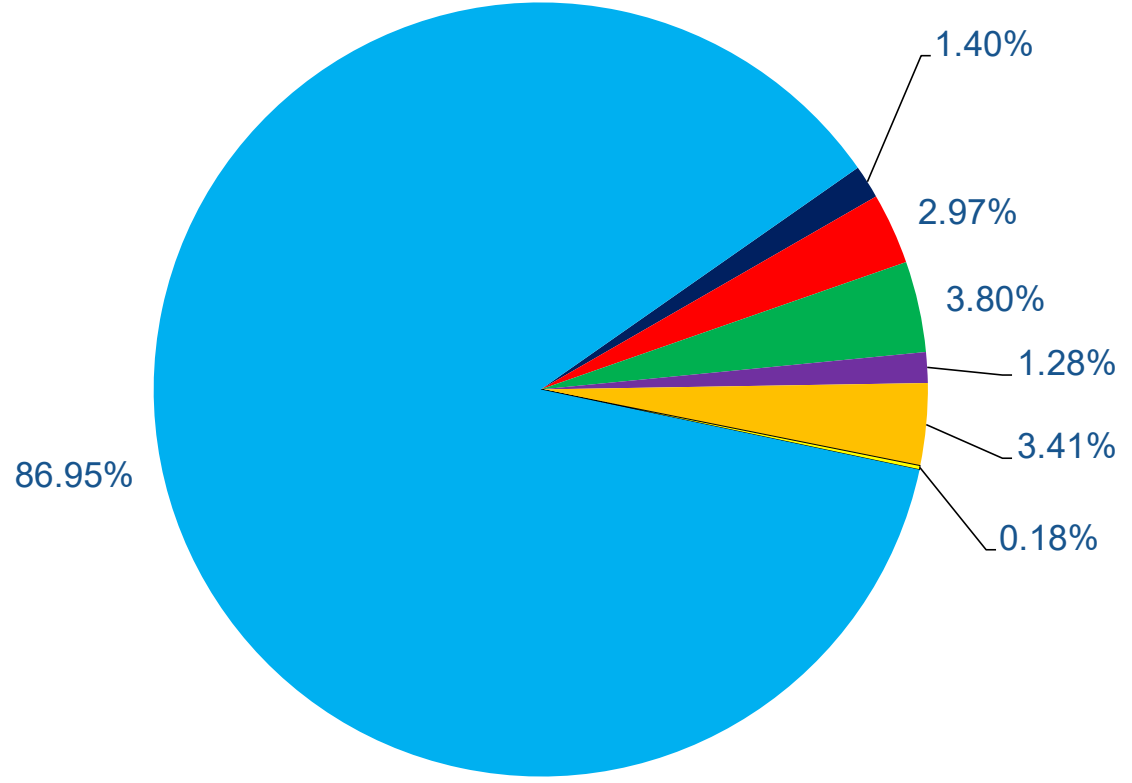
\*Based on data pulled from LCP Tracker on 10/12/2023. Workforce Goals: 20% Women / 32% POCI

# Power Equipment Operators Demographics

## Participation Percentage

- Women: 9.27%
- POCI Women: 1.80%
- POCI: 12.87%

- ASIAN
- AFRICAN AMERICAN
- HISPANIC
- OTHER
- NATIVE AMERICAN
- NOT SPECIFIED
- CAUCASIAN



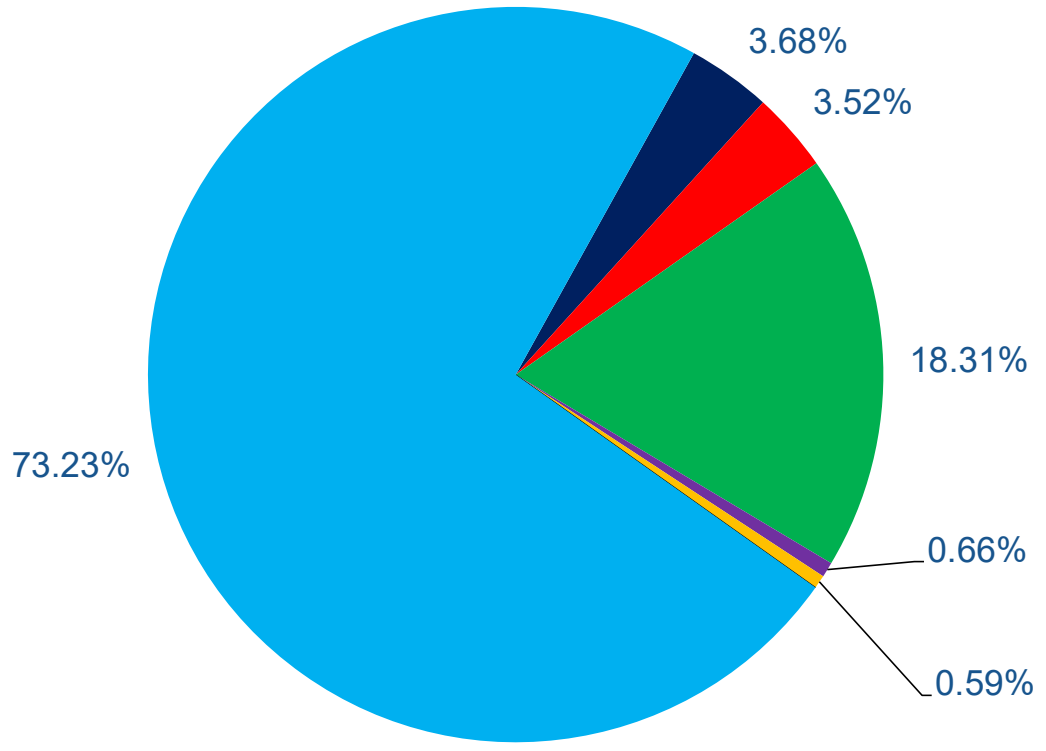
\*Based on data pulled from LCP Tracker on 10/12/2023. Workforce Goals: 20% Women / 32% POCI

# Carpenters Demographics

## Participation Percentage

- Women: 5.30%
- POCI Women: 1.54%
- POCI: 26.77%

- ASIAN
- AFRICAN AMERICAN
- HISPANIC
- OTHER
- NATIVE AMERICAN
- NOT SPECIFIED
- CAUCASIAN



\*Based on data pulled from LCP Tracker on 10/12/2023. Workforce Goals: 20% Women / 32% POCI

# Contractors Hours to Date (Civil & Systems)

Building Trade	Hours*	Percentage
Lunda/C.S. McCrossan Joint Venture	899,016	29.61%
Lunda Construction Company	396,250	13.05%
C.S. McCrossan Construction Company	303,891	10.01%
Egan Company	266,502	8.78%
E&J Rebar Inc	152,278	5.02%
RailWorks Track Services LLC	126,601	4.17%
Delta Railroad Construction, Inc.	85,082	2.80%
Standard Contracting, Inc.	71,585	2.36%
Pete's Water & Sewer	57,604	1.90%
Public Solutions Group Inc	45,094	1.49%
Global Specialty Contractors Inc	36,590	1.21%
Blackstone Contractors LLC	35,762	1.18%
130 Other Contractors	559,683	18.44%
<b>Grand Total</b>	<b>3,035,937</b>	

\*Based on data pulled from LCP Tracker on 10/12/2023.

# Thank You

## MORE INFORMATION

**Website:** [GreenLineExt.org](http://GreenLineExt.org)

**Email:** [swlrt@metrotransit.org](mailto:swlrt@metrotransit.org)

**Twitter:** [@GreenLineExtMN](https://twitter.com/GreenLineExtMN)

**Instagram:** [@GreenLineExtMN](https://www.instagram.com/GreenLineExtMN)