



Disadvantaged Business Enterprise and Workforce Advisory Committee

July 20th , 2023



EDEN PRAIRIE | MINNETONKA | EDINA | HOPKINS | ST. LOUIS PARK | MINNEAPOLIS

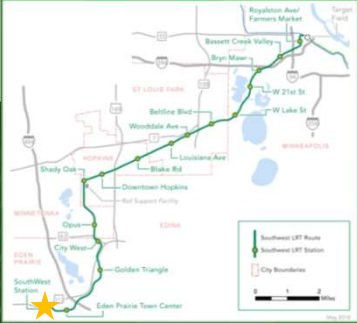
Today's Topics

- Project Update
- Consent Business
 - DBE Achievement Reporting
 - Workforce Participation Reporting
- Non-Consent Business
 - Civil Contract Update
 - Systems Contract Update
- Committee Discussion
- Announcements
- Public Invitation



Project Office Update Civil Construction

SouthWest Station in Eden Prairie



Plaza at City West Station in Minnetonka



Opus Station in Minnetonka



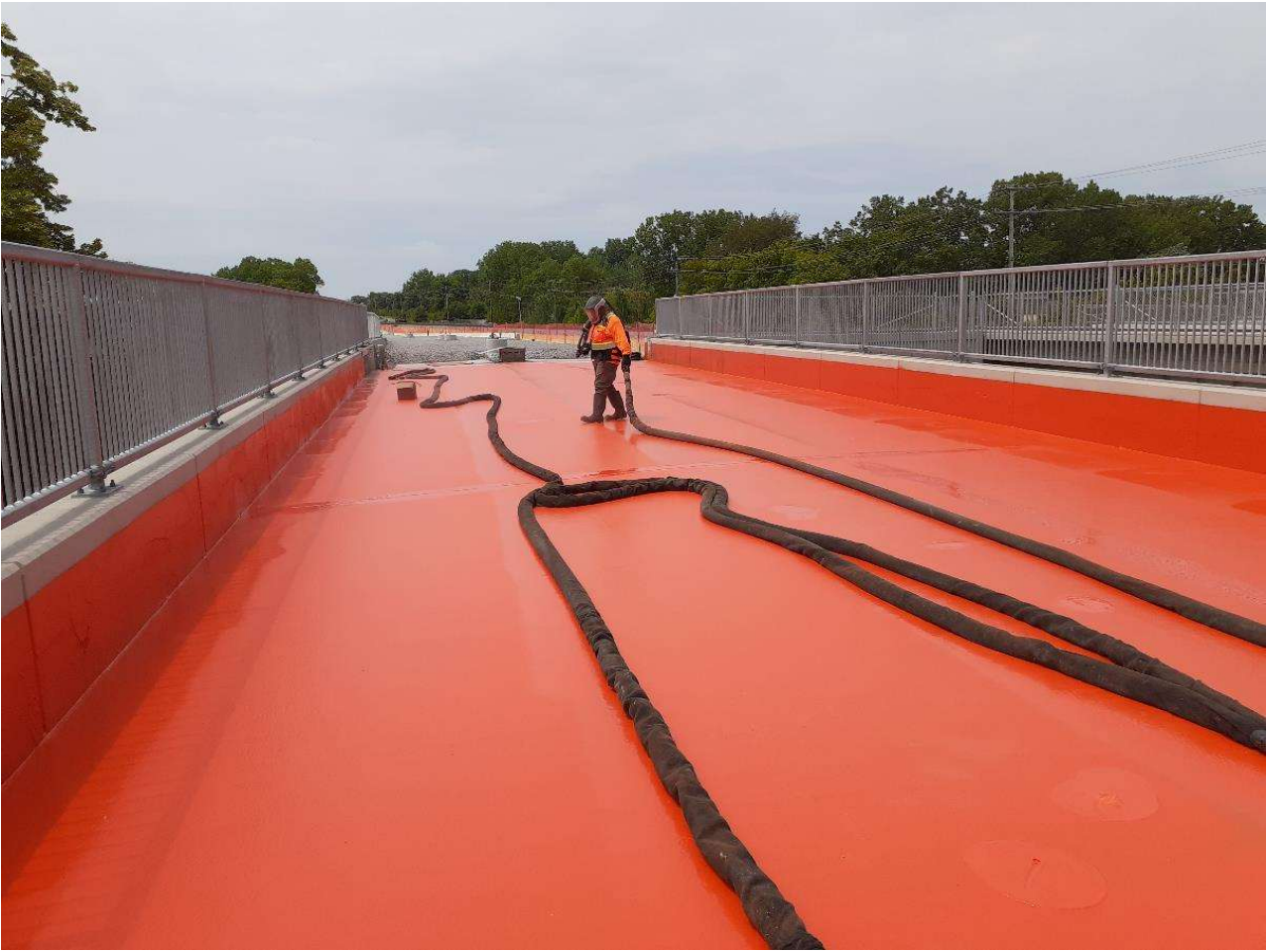
Opus Station in Minnetonka



K-Tel Drive/5th Street and 17th Street in Hopkins



Louisiana Avenue LRT Bridge in St. Louis Park



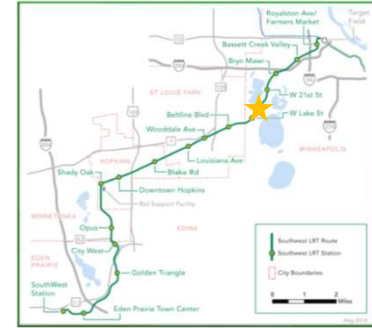
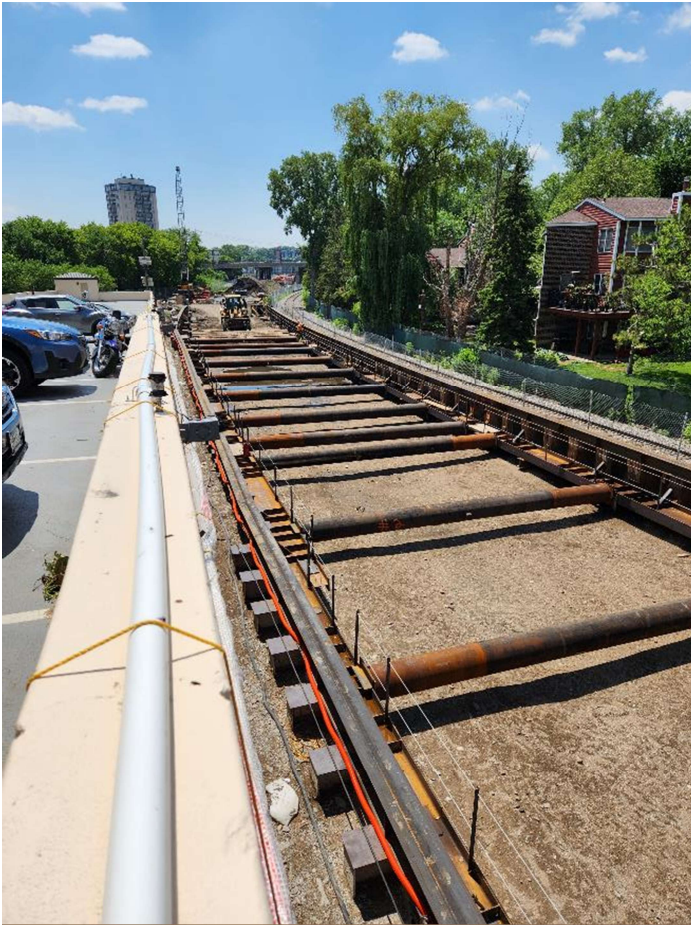
Wooddale Avenue in St. Louis Park



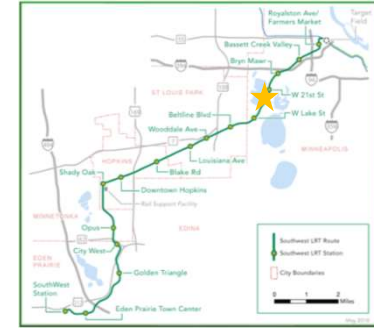
Vertical circulation steel erection at West Lake Street Station in Minneapolis



West heading excavation area at the Kenilworth Tunnel in Minneapolis



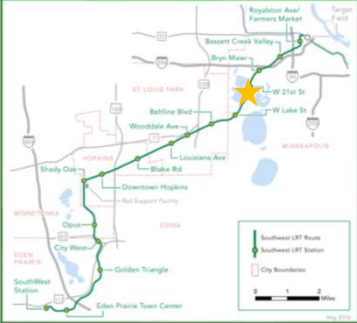
Kenilworth LRT Tunnel in Minneapolis



Kenilworth LRT Tunnel in Minneapolis



Cedar Lake Channel Trail Bridge in Minneapolis



Pedestrian truss bridge installation at Bryn Mawr Station in Minneapolis



Vertical circulation steel erection at Bassett Creek Valley Station in Minneapolis



Glenwood Avenue Bridge in Minneapolis

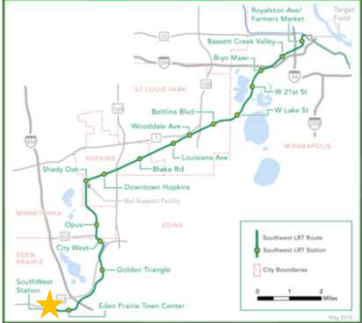


Royalston Avenue/Farmers Market Station in Minneapolis



Project Office Update Systems Contract

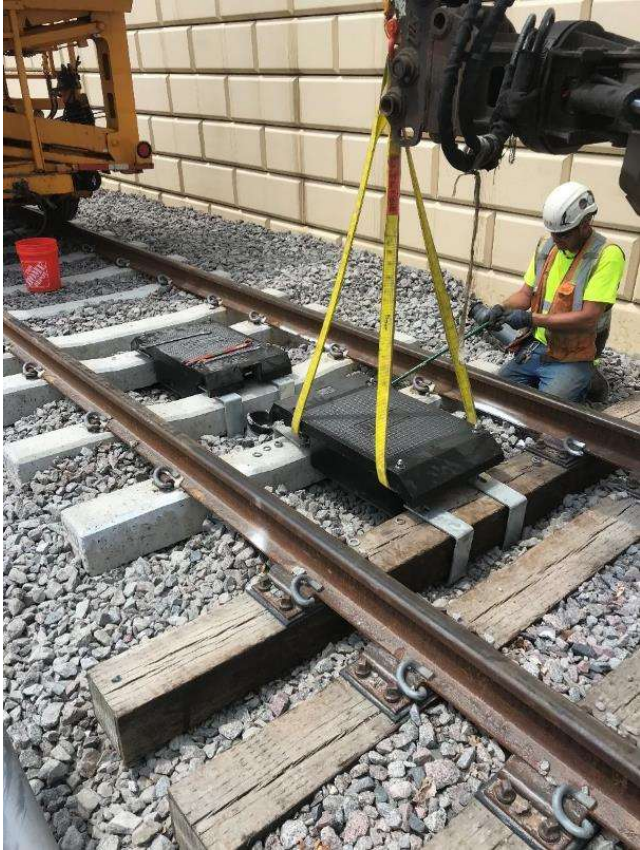
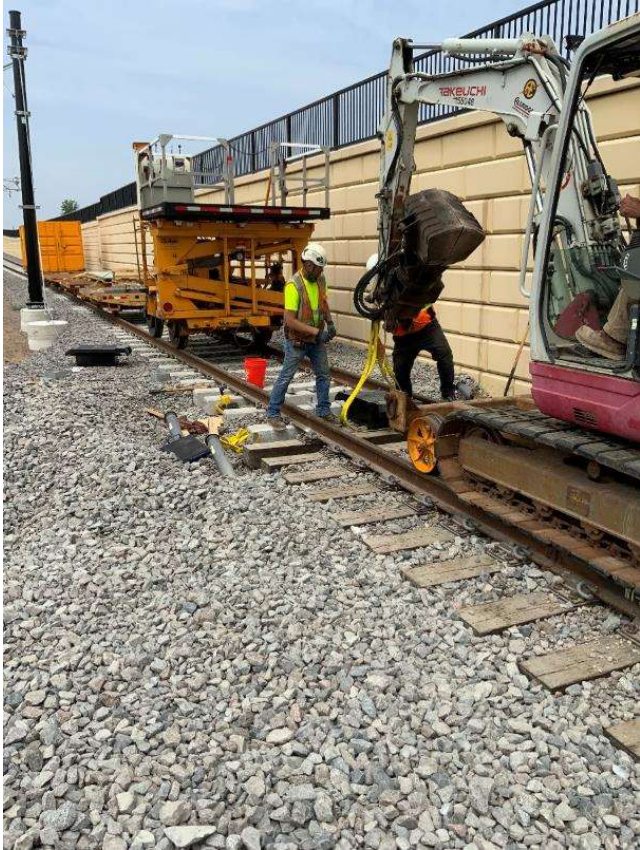
First overhead contact system (OCS) wire run pull from SouthWest Station bump post to balance weight assembly at SouthWest Interlocking



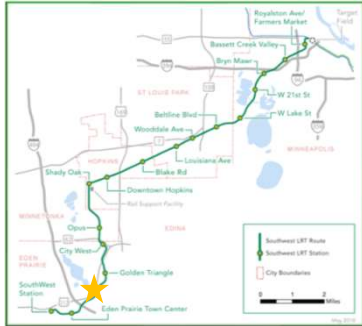
First OCS wire run termination at SouthWest Interlocking balance weight assembly



Eden Prairie Town Center Station wayside signal equipment installation of track circuit impedance bonds



Traction Power Substation (TPSS) SW305 duct bank installation to foundation



TPSS SW308 foundation base wall pour



TPSS SW310 duct bank installation to foundation



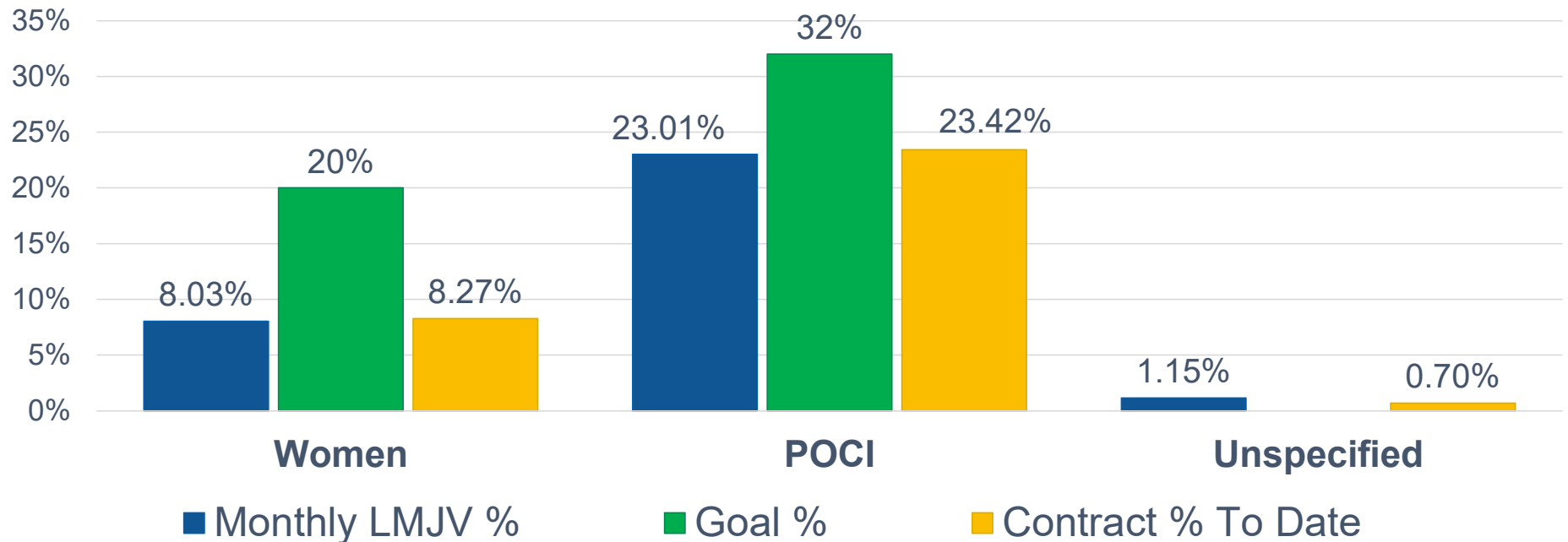
Consent Business

DBE Achievement as of May 31, 2023

Contractor	Contract Description	Contract Amount	Contractor Billed to Date	DBE Billed to Date	DBE Date %	As of Date
LMJV 16% Goal	Civil	\$1,032,878,604	\$873,783,031	\$198,605,733	22.7%	5/31/23
APJV 12% Goal	Systems	\$208,972,982	\$123,704,455	\$21,970,195	17.8%	11/30/22
17% Goal	Closed Contracts	\$41,626,766	\$41,626,766	\$6,539,604	15.7%	
		Contract Amount	Billed to Date	\$ DBE to Date	% DBE to Date	
15% Goal		\$1,283,478,352	\$1,039,114,252	\$227,115,532	21.9%	

Civil Workforce Participation Percentage*

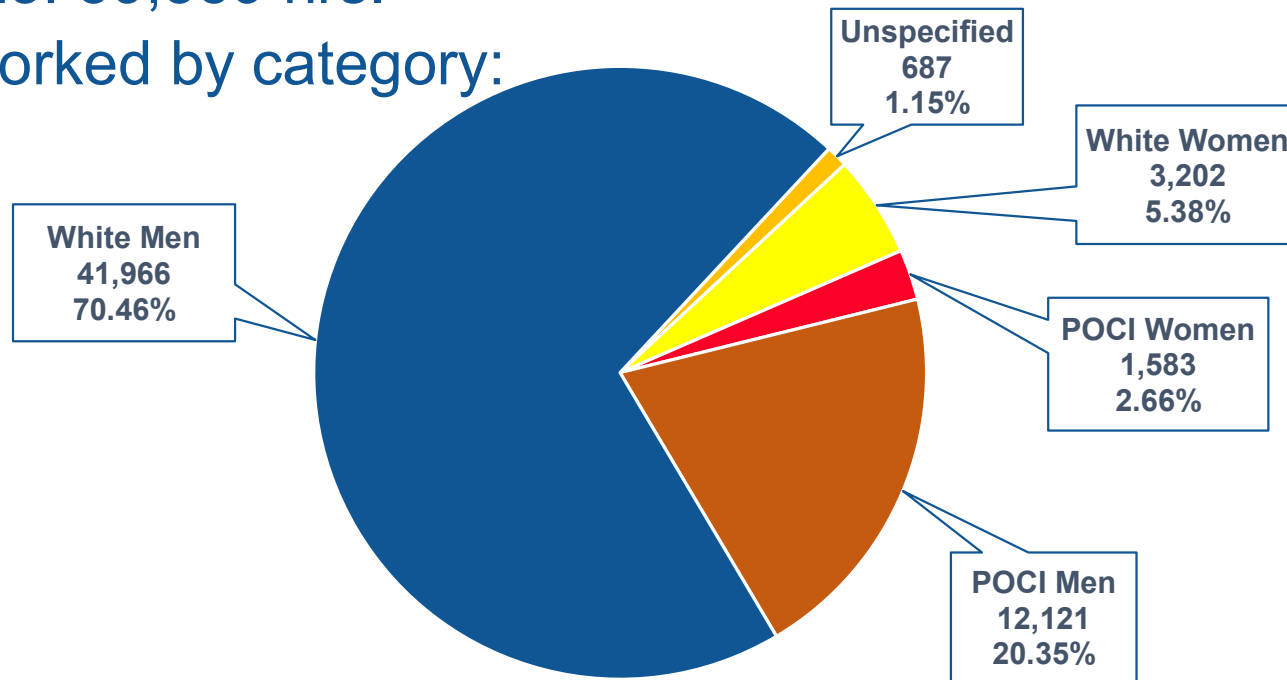
- May 2023: 59,559 hrs.
- Civil Construction Total: 2,735,632 hrs.



*Based on MDHR Workforce Report for May 2023
People of Color/Indigenous (POCI)

Civil Workforce Participation*

- May 2023: 59,559 hrs.
- Hours worked by category:



*Based on MDHR Workforce Report for May 2023

Civil Workforce Trucking Participation*

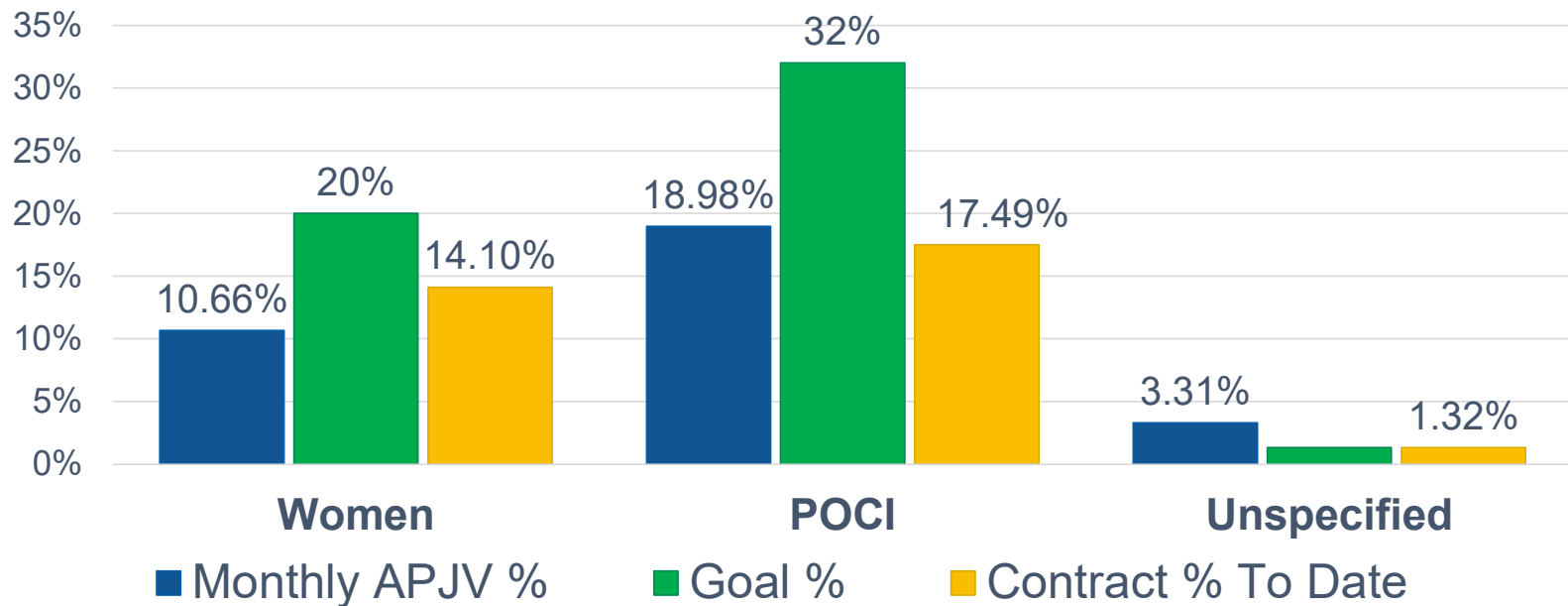
Trucking participation on Project being counted:

- **MBE:** 31,431 hours
- **Rock-On Trucks:** 4,561 hours
- **ZTS:** 4,647 hours
(per LMJV, work completed)

*Based on MDHR Workforce Reports: Project Start through May 2023

Systems Workforce Participation Percentage*

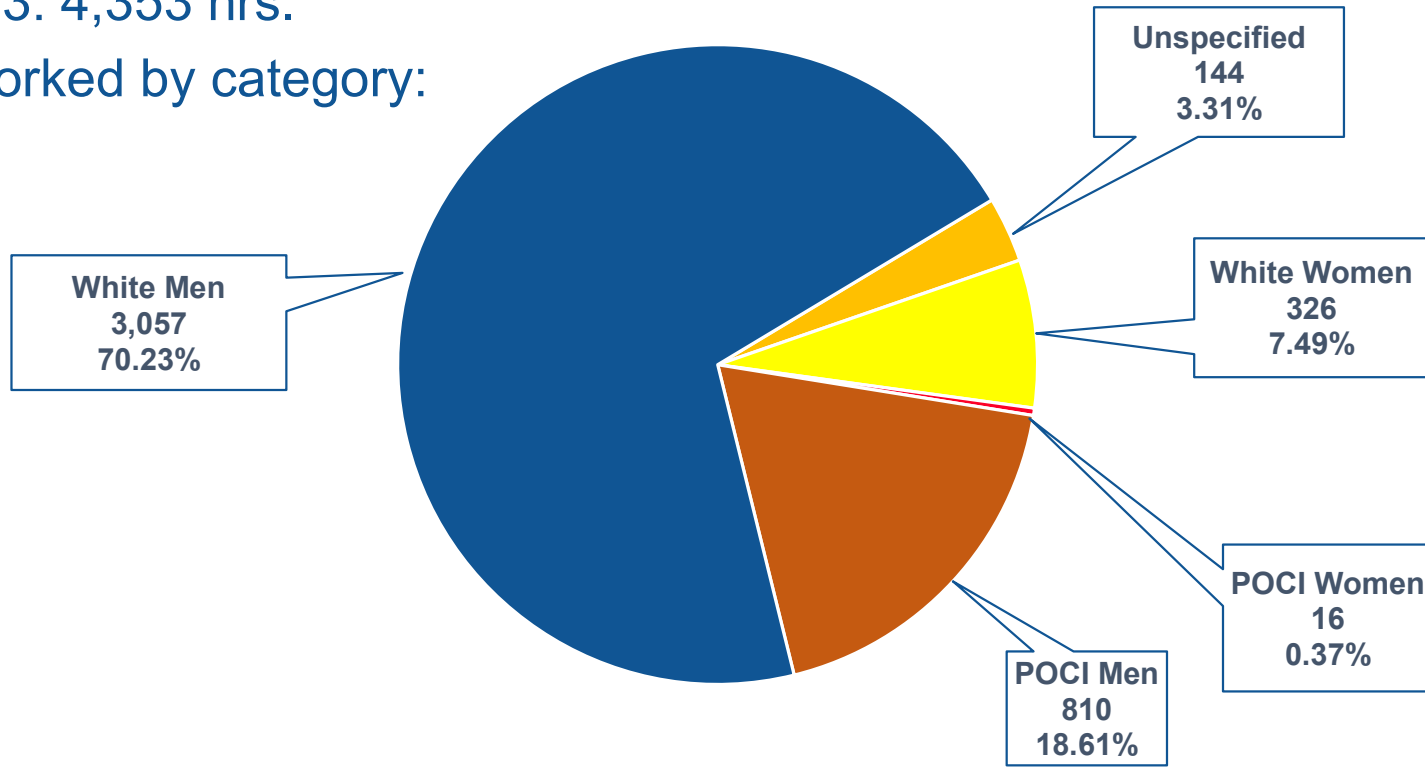
- May 2023: 4,353 hrs.
- Systems Construction Total: 23,950 hrs.



*Based on MDHR Workforce Report for May 2023
People of Color/Indigenous People (POCI)

Systems Workforce Participation*

- May 2023: 4,353 hrs.
- Hours worked by category:



*Based on MDHR Workforce Report for May 2023

Non-Consent Business

Civil Contract Work

JUNE – DBEs working on project

- Blackstone
- E&J Rebar
- E-Con Placer
- Gunnar Electric
- JL Theis
- MBE
- On Call Pavement Sweepers
- PWS
- Reiner Contracting
- Rock On
- Safety Signs
- Standard Contracting
- Stonebrook Fence
- Sun Mechanical

DBE Achievement Updates

Looking forward tentative actions:

- DBE Round Table
 - This is being scheduled for August
- DBE Project Closing Meetings
 - This process is being created by LMJV team
- Monthly DBE Review Meetings
 - LMJV would like to meet monthly with Met Council Reps to review DBEs on project

Workforce Achievement Update –

SWLRT CIVIL WORKFORCE - Trade Participation

TRADES	Apr-23						May-23						Jun-23					
	TOTAL	Male	Female	Female %	POCI	POCI %	TOTAL	Male	Female	Female %	POCI	POCI %	TOTAL	Male	Female	Female %	POCI	POCI %
Equipment Operators	106	102	4	3.77%	9	8.49%	144	138	6	4.17%	13	9.03%	141	136	5	3.55%	18	12.77%
Painters	6	4	2	33.33%	3	50.00%	14	11	3	21.43%	4	28.57%	19	16	3	15.79%	6	31.58%
Truck Drivers	18	17	1	5.56%	3	16.67%	47	42	5	10.64%	5	10.64%	34	28	6	17.65%	9	26.47%
Ironworkers	38	36	2	5.26%	9	23.68%	47	43	4	8.51%	12	25.53%	47	45	2	4.26%	13	27.66%
Carpenters	40	37	3	7.50%	12	30.00%	41	38	3	7.32%	10	24.39%	43	41	2	4.65%	13	30.23%
Cement Masons	13	13	0	0.00%	5	38.46%	29	28	1	3.45%	9	31.03%	30	29	1	3.33%	10	33.33%
Electricians	58	53	5	8.62%	6	10.34%	65	60	5	7.69%	11	16.92%	69	63	6	8.70%	14	20.29%
Plumbers	3	3	0	0.00%	0	0.00%	4	4	0	0.00%	0	0.00%	2	0	0	0.00%	0	0.00%
Glaziers	1	1	0	0.00%	0	0.00%	0	0	0	0.00%	0	0.00%	0	0	0	0.00%	0	0.00%
Laborers	157	151	6	3.82%	48	30.57%	223	202	21	9.42%	67	30.04%	267	252	15	5.62%	91	34.08%
Bricklayers													5	5	0	0.00%		0.00%
Piledrivers	22	21	1	4.55%	5	22.73%	23	22	1	4.35%	5	21.74%	22	21	1	4.55%	3	13.64%
Roofer	11	10	1	9.09%	0	0.00%	3	3	0	0.00%	1	33.33%	14	13	1	7.14%	2	14.29%
Other (Sheetmetal)													8	0	1	12.50%	2	25.00%
Totals	473	448	25	5.29%	100	21.14%	640	591	49	7.66%	137	21.41%	701	649	43	6.13%	181	25.82%

MONTHLY WORKFORCE – June 2023

IN & OUT BREAKDOWN (LMJV/Lunda/CS McCrossan)

IN REPORT	TOTAL	WHITEALE	WHITE FEMALE	MINORITY MALE	MINORITY FEMALE
TRANSFERS	5	3	2	0	0
REHIRE/ RETURN	0	0	0	0	0
NEW HIRE	8	5	2	1	0

OUT REPORT	TOTAL	WHITE MALE	WHITE FEMALE	MINORITY MALE	MINORITY FEMALE
TRANSFERS	5	3	1	1	0
Voluntary Leave	2	1	1	0	

Workforce GFE Updates

Looking forward actions:

- Goodwill/Easter Seals Mock Interviews
 - July 27th
- MN Trades Academy/Junior Achievement Career Day
 - August 7th
- Rosies & Robbies of the Rail Round Table
 - August 16th

Systems Contract Work

Systems Updates

- **APJV and Premier Electric will participate in Mock Interviews at Summit Academy On June 30, 2023.**
- **New DBE Subcontractor – Stonebrook Fence, Fully executed subcontract totaling \$216,635.00.**
- **DBE Subcontractor – Elite Fiber Optics should begin fieldwork in the next month or two**

Workforce Achievement Update

**SWLRT – Systems Workforce
Trade Participation**

May 2023

TRADES	Total	Male	Female	Female %	POCI	POCI %
Equipment Operators	7	6	1	14.29%	0	0.00%
Laborers	14	14	0	0.00%	6	42.86%
Traffic Control	2	2	0	0.00%	1	50.00%
Ironworkers	7	7	0	0.00%	1	14.29%
Carpenter	8	8	0	0.00%	1	12.50%
Surveyors	2	2	0	0.00%	0	0.00%
Electricians	25	21	4	16.00%	6	24.00%
Painters	1	1	0	0.00%	0	0.00%
Roofer	3	3	0	0.00%	2	66.67%
Truck Driver						
TOTALS	69	64	5	7%	17	24.6%

DBE Subcontractors who worked in May 2023

- Systems Contract – Subs with Hours Reported to LCP Tracker
 - Gunnar Electric
 - Safety Signs

Committee Discussion

Announcements

Public Invitation

- Each speaker is limited to a three-minute presentation
- Pre-register as you sign in for attendance at the start of the meeting



Closing

- Next Meeting date: August 17th, 2023, from 2:00 – 4:00 PM
 - Held virtually and streamed live
- Adjourn

MORE INFORMATION

Website: GreenLineExt.org

Email: swlrt@metrotransit.org

Twitter: [@GreenLineExtMN](https://twitter.com/GreenLineExtMN)

Instagram: [@GreenLineExtMN](https://www.instagram.com/GreenLineExtMN)