



# Disadvantaged Business Enterprise and Workforce Advisory Committee

September 21<sup>st</sup>, 2023



EDEN PRAIRIE | MINNETONKA | EDINA | HOPKINS | ST. LOUIS PARK | MINNEAPOLIS

# Today's Topics

- Project Update
- Consent Business
- Non-consent Business
- Committee Discussion
- Announcements
- Public Invitation



# Project Office Update

# Civil Construction Update

# Grading at SouthWest Station in Eden Prairie



# Drainage pond excavation and grading adjacent to Minnetonka/Hopkins LRT Bridge



# Shady Oak Station in Hopkins



# Direct fixation plinth construction at Excelsior Bridge in Hopkins





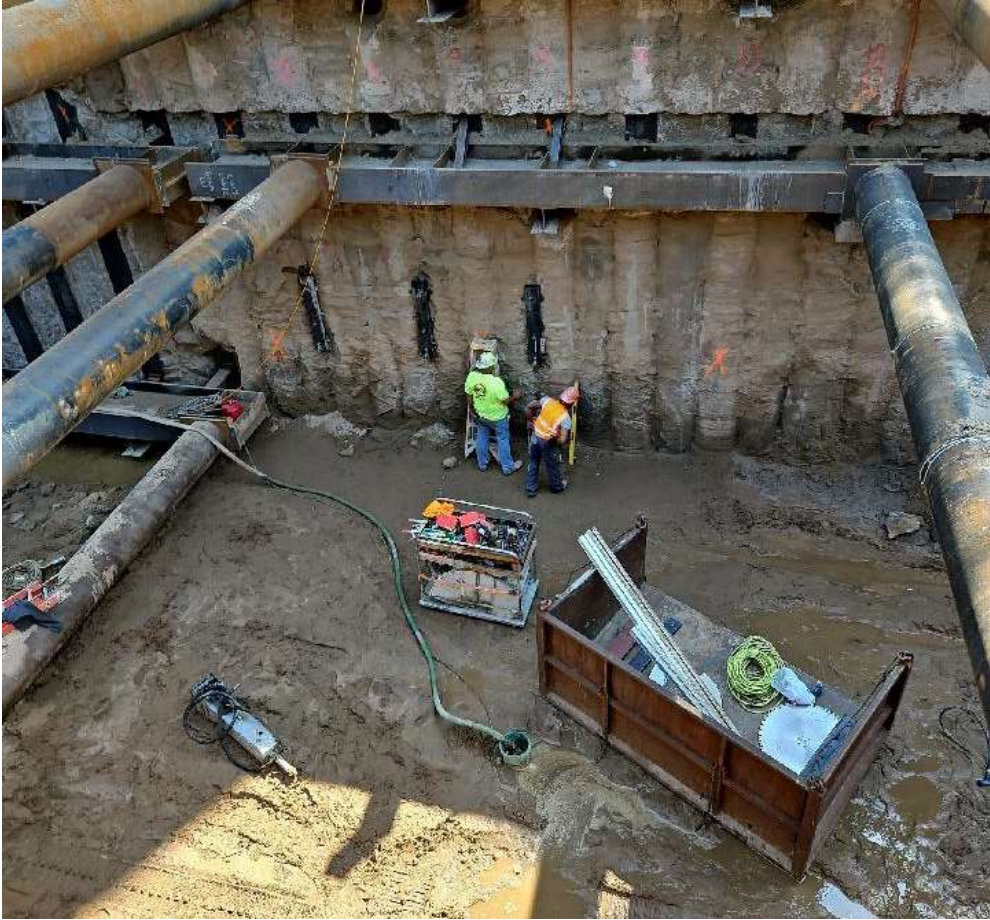
# Operator facilities at Blake Road Station in Hopkins



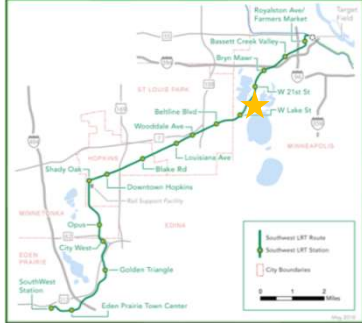
# Vertical Circulator structural slab at West Lake Street Station in Minneapolis



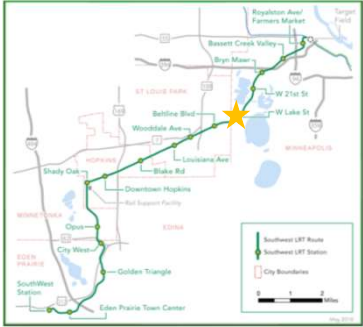
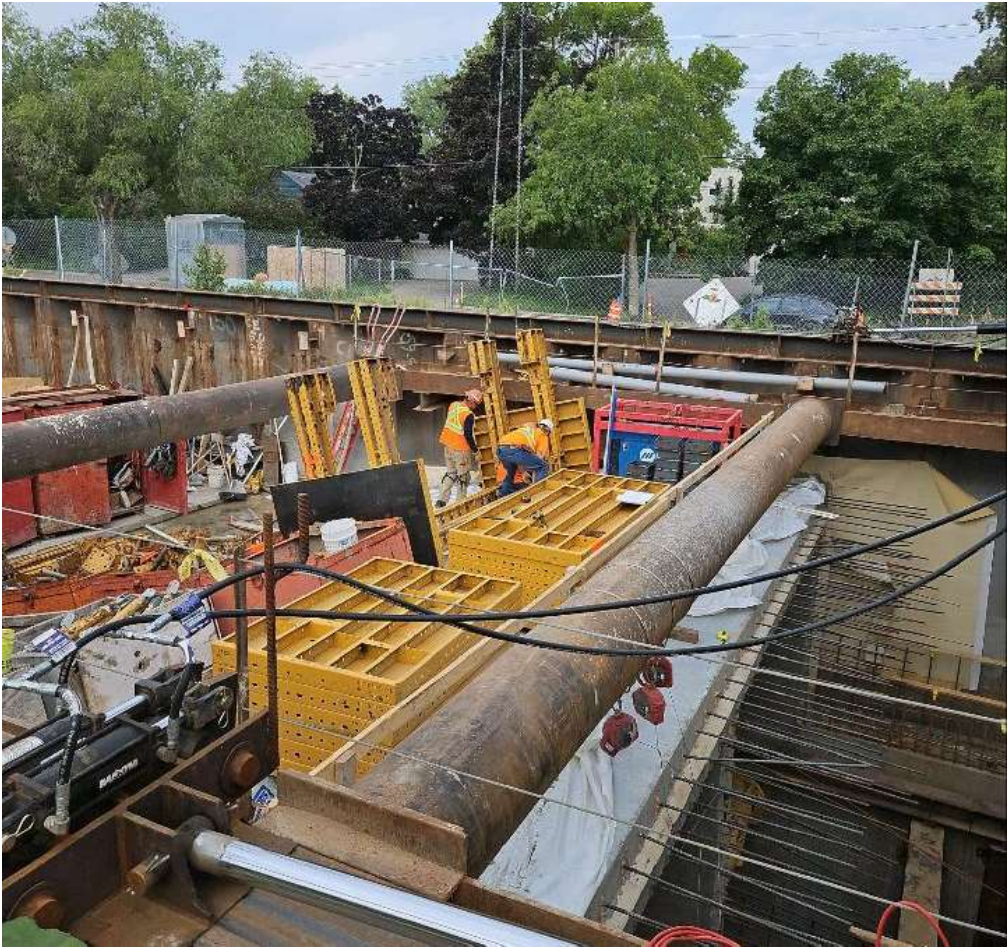
# West heading secant saw cutting at the Kenilworth Tunnel in Minneapolis



# SOE Removal and backfilling over the Kenilworth Tunnel in Minneapolis



# Upper tunnel transition at Kenilworth Tunnel in Minneapolis



# Cedar Lake Channel Trail Bridge and WPA walls in Minneapolis



# Bryn Mawr Station Passenger Dropoff in Minneapolis



# Pedestrian bridge at Bryn Mawr Station in Minneapolis





# Precast panel installation and roofing at Bassett Creek Valley Station vertical circulator in Minneapolis



# Glenwood Avenue Bridge in Minneapolis



# Ceiling and storefront installation at Royalston Station in Minneapolis



# Duct bank installation on 5th Avenue/7th Street LRT Bridge in Minneapolis



# Systems Contract Work



# TPSS 302 – TE Feeder cable pulling from TPSS disconnect switches to OCS feeder poles



# TPSS 303 – TE Feeder cable pulling to TPSS manholes and OCS feeder poles

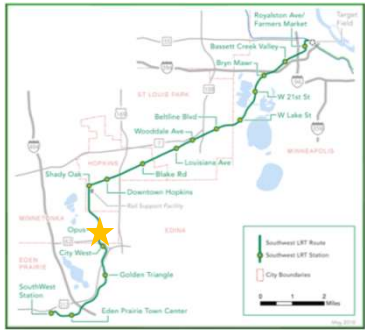




# TPSS 304 – TE Feeder cable pulling from TPSS to OCS feeder poles on 9 Mile bridge



# Golden Triangle Interlocking/station/crossing signal house (GLTI) crane pick



# TPSS 305 Crane Pick and slide into place with hydraulic jacks



# TPSS 307 – first and second phase of crane lifts



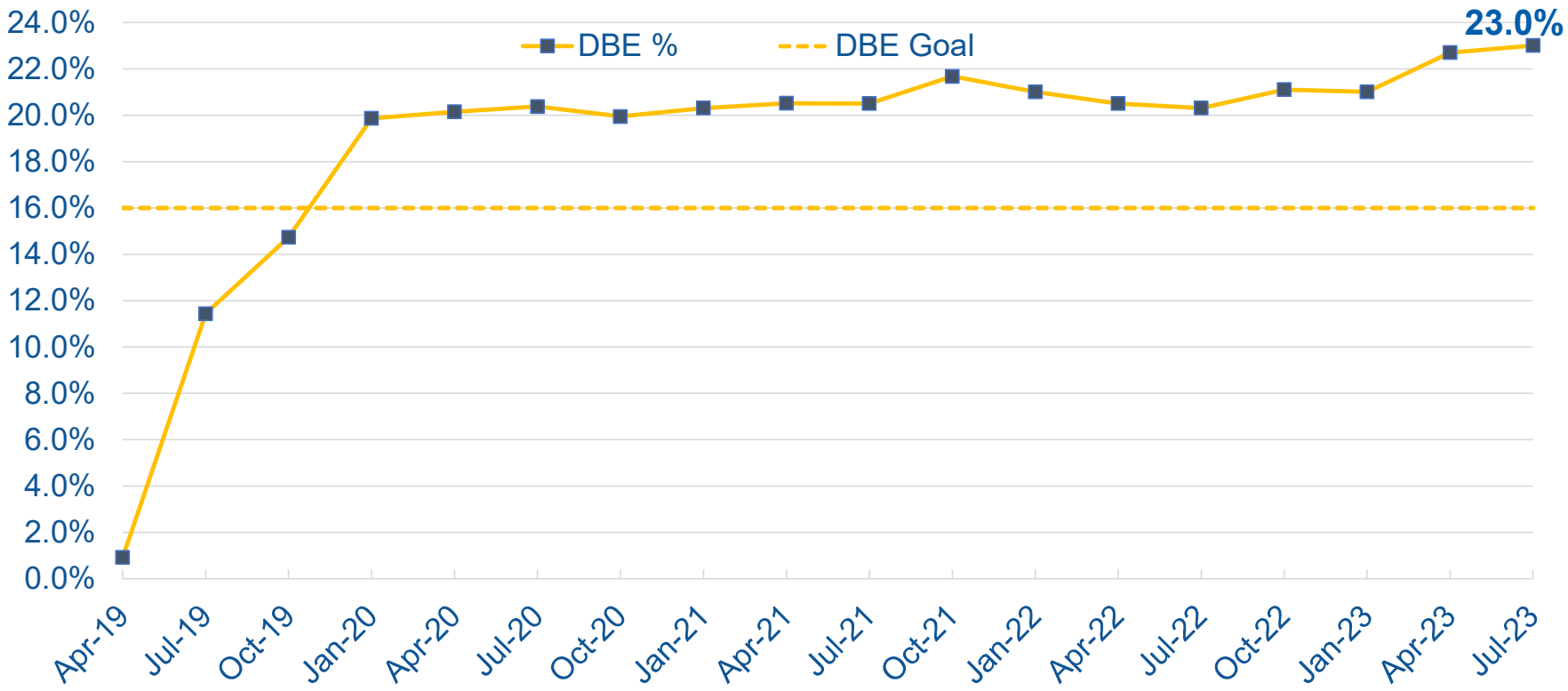
# Consent Business

# DBE Achievement Report

# DBE Achievement as of July 31, 2023

Contractor	Contract Description	Contract Amount	Contractor Billed to Date	DBE Billed to Date	DBE Date %	As of Date
LMJV 16% Goal	Civil	\$1,040,278,783	\$907,326,849	\$208,581,920	23.0%	7/31/23
APJV 12% Goal	Systems	\$209,003,228	\$132,750,398	\$22,412,171	16.9%	7/31/23
17% Goal	Closed Contracts	\$41,626,766	\$41,626,766	\$6,539,604	15.7%	
		<b>Contract Amount</b>	<b>Billed to Date</b>	<b>\$ DBE to Date</b>	<b>% DBE to Date</b>	
15% Goal		\$1,290,908,777	\$1,081,704,013	\$237,533,695	22.0%	

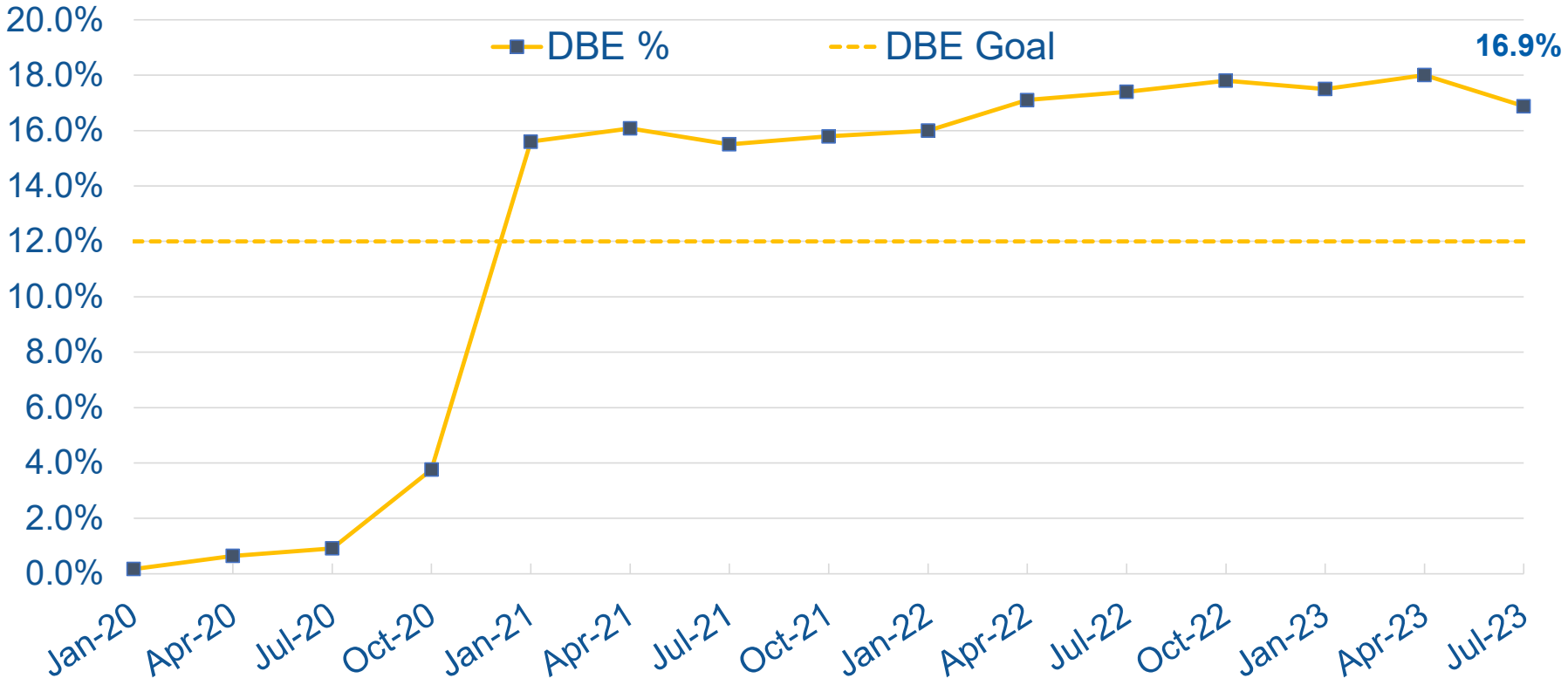
# Civil DBE Participation as of July 31, 2023



\*DBE Goal for the Civil Contract is 16%



# Systems DBE Participation as of July 31, 2023



\*DBE Goal for the Systems Contract is 12%

# Green Line Extension Construction Contracts Disaggregated\*

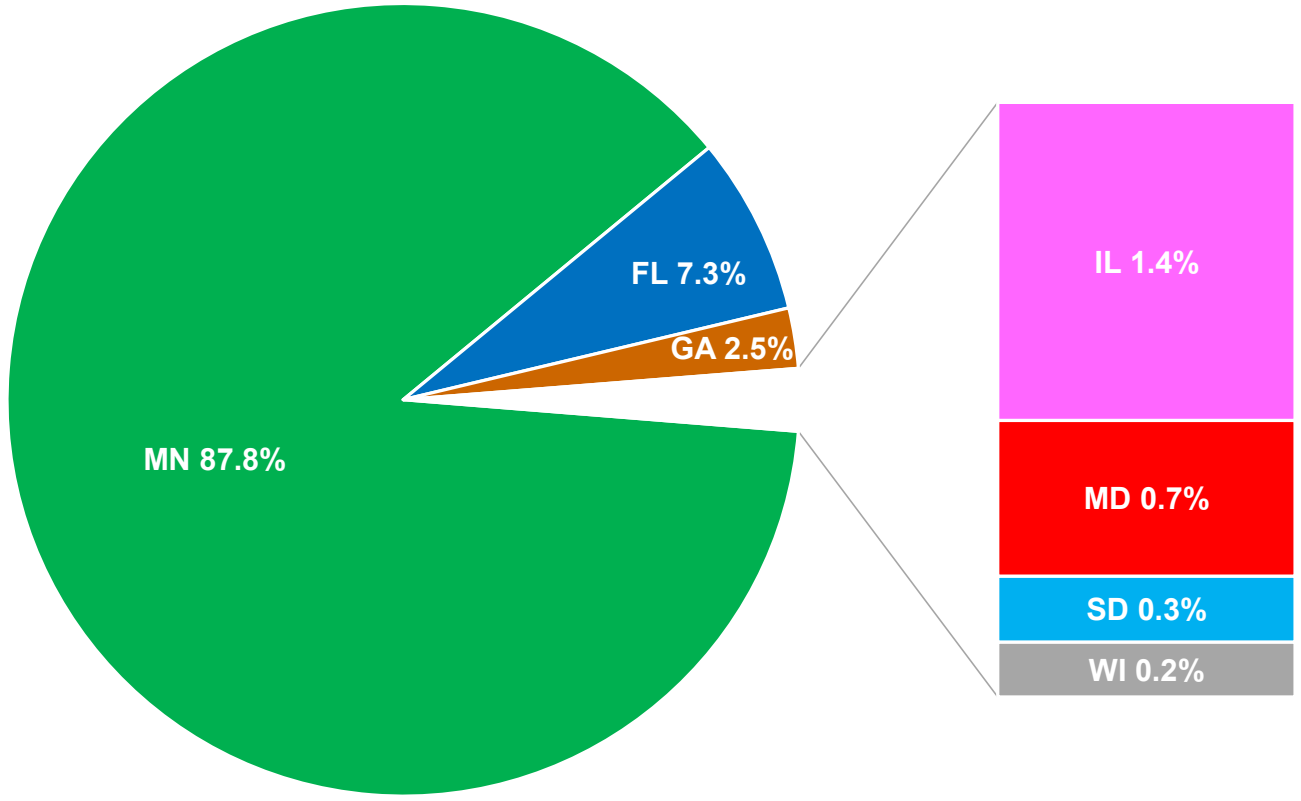
- Construction Contracts Total: \$1,290,908,777

Ethnic Group	Women		Men		Total	
Asian Pacific	\$ 277,743	0.02%	\$ 54,438,960	4.22%	\$ 54,716,703	4.24%
Asian Subcontinent	\$ -	0.00%	\$ 2,191,101	0.17%	\$ 2,191,101	0.17%
Black	\$ 43,261	0.00%	\$ 7,840,815	0.61%	\$ 7,884,076	0.61%
Hispanic	\$ 743,372	0.06%	\$ 39,986,922	3.10%	\$ 40,730,294	3.16%
Native American	\$ 3,877,372	0.30%	\$ 23,317,789	1.81%	\$ 27,195,161	2.11%
White Women	\$ 149,785,018	11.60%			\$ 149,785,018	11.60%
DBE Contracts Total					\$ 282,502,352	21.88%

\*Contract values are as of 7/31/2023 and include: Civil, Systems, Franklin O&M & OMF Demo

# Disaggregated Construction DBE Data\*

State	Totals
MN	\$ 247,902,245
FL	\$ 20,500,000
GA	\$ 6,939,336
IL	\$ 3,828,024
MD	\$ 1,878,221
SD	\$ 795,000
WI	\$ 659,526

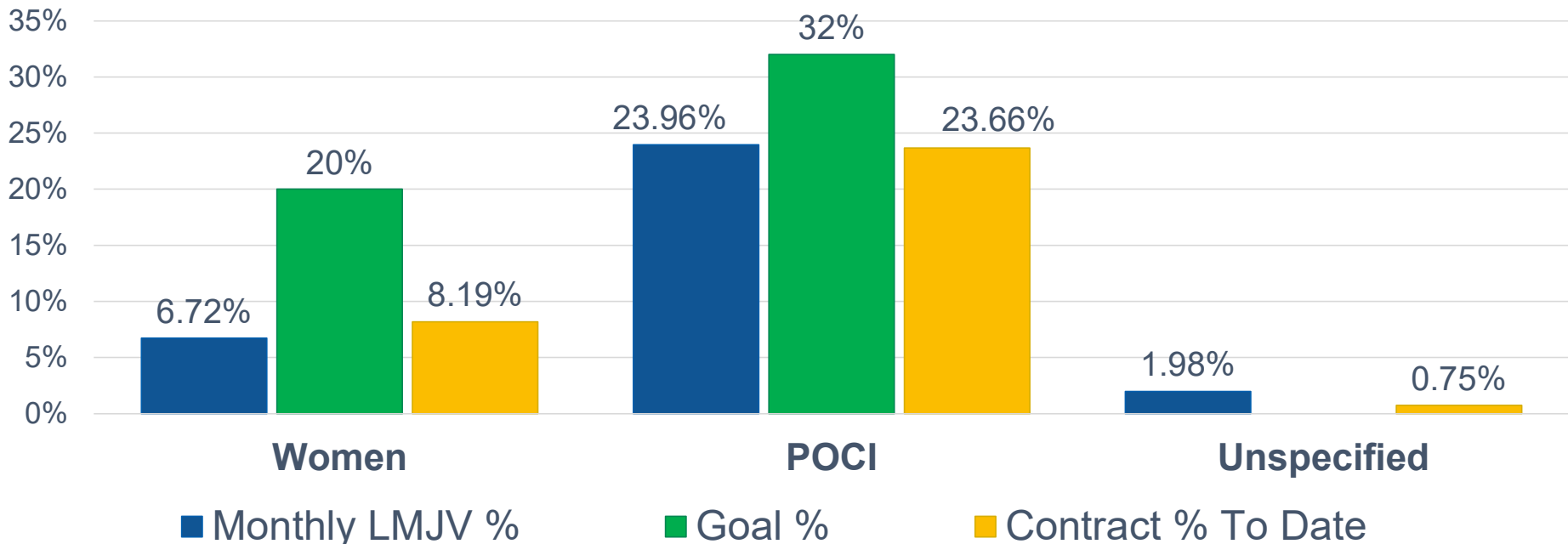


\*Contract values for Civil, Systems, Franklin O&M, and OMF Demolition as of July 31, 2023

# Workforce Participation Report

# Civil Workforce Participation Percentage\*

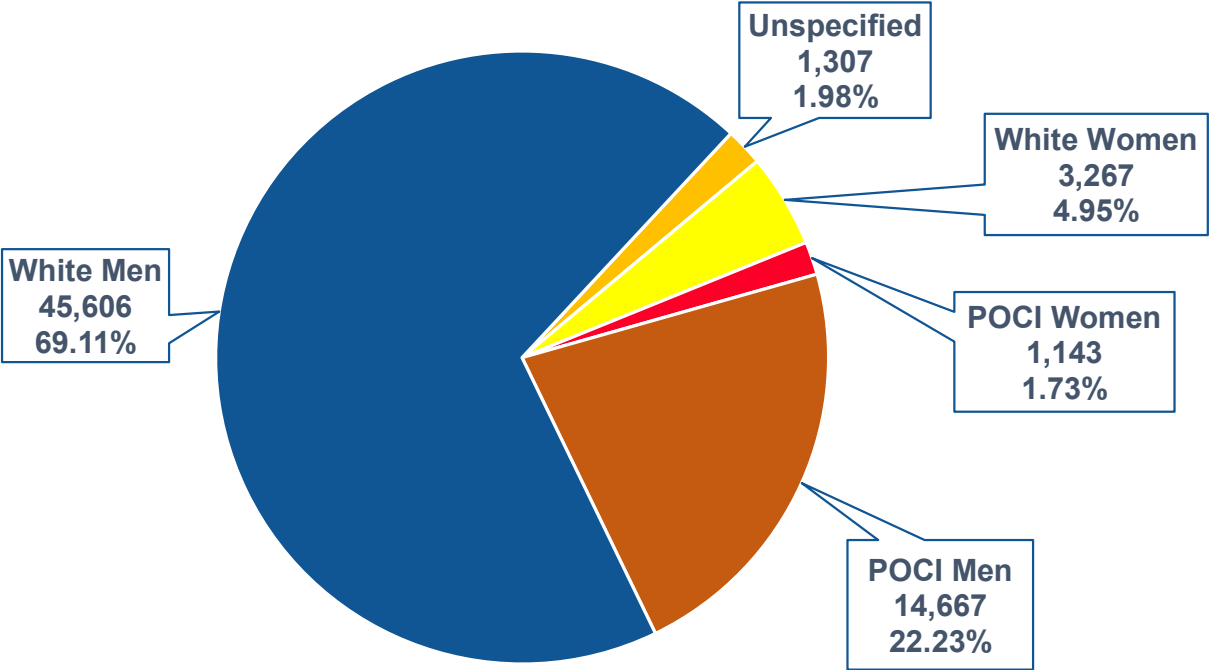
- July 2023: 65,989 hrs.
- Civil Construction Total: 2,873,192 hrs.



\*Based on MDHR Workforce Report for July 2023  
People of Color/Indigenous (POCI)

# Civil Workforce Participation\*

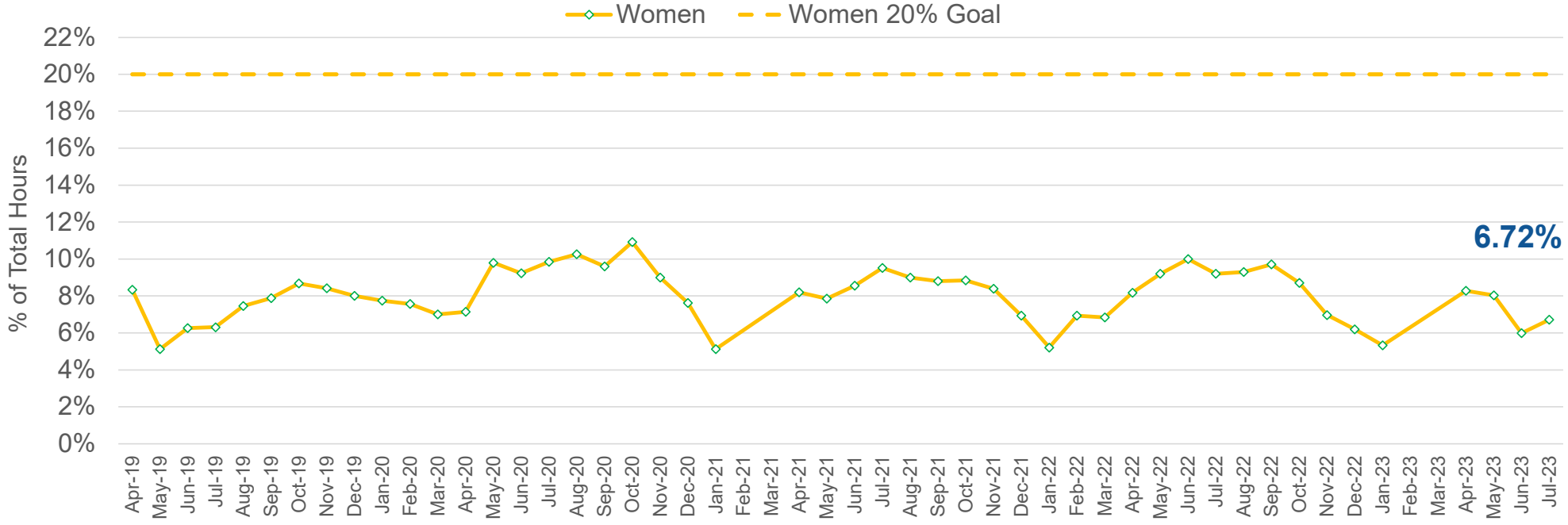
- July 2023: 65,989 hrs.
- Hours worked by category:



\*Based on MDHR Workforce Report for July 2023

# Civil Workforce Participation Cumulative\*

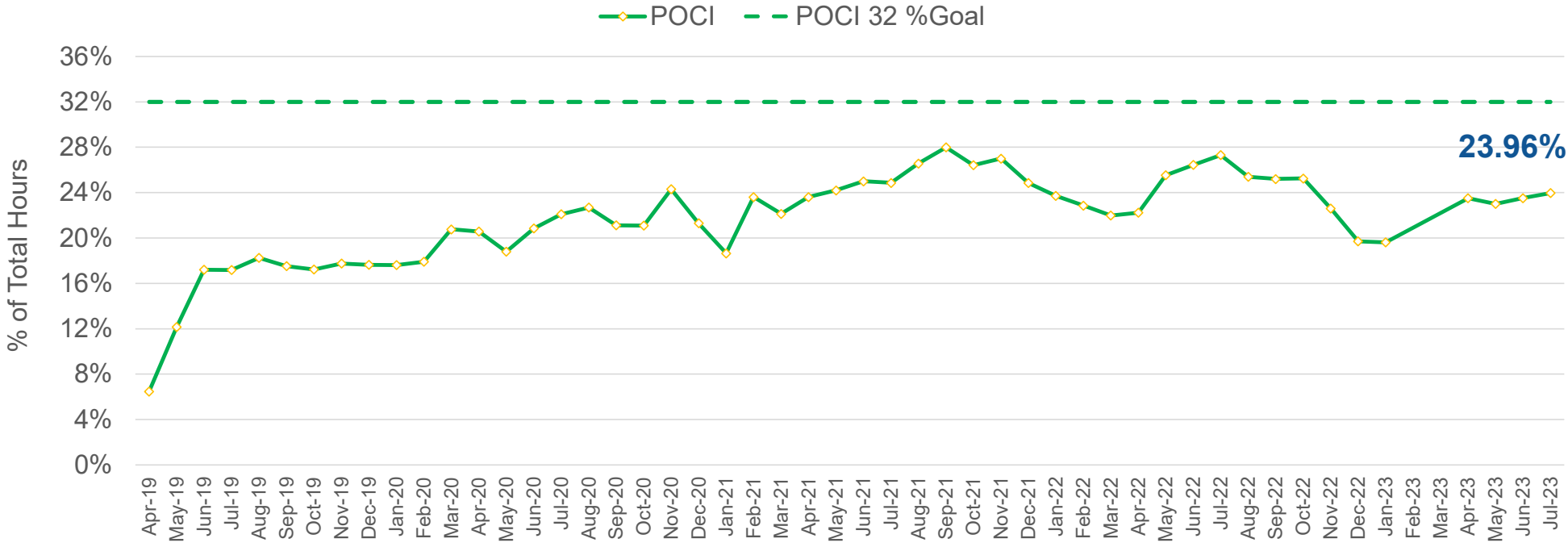
Total Women hours to date: 235,264 (8.19%)



\*Based on MDHR Workforce Reports: Project Start through July 2023

# Civil Workforce Participation Cumulative\*

Total POCI hours to date: 679,758 (23.66%) hrs.



\*Based on MDHR Workforce Reports: Project Start through July 2023



# Civil Workforce Trucking Participation\*

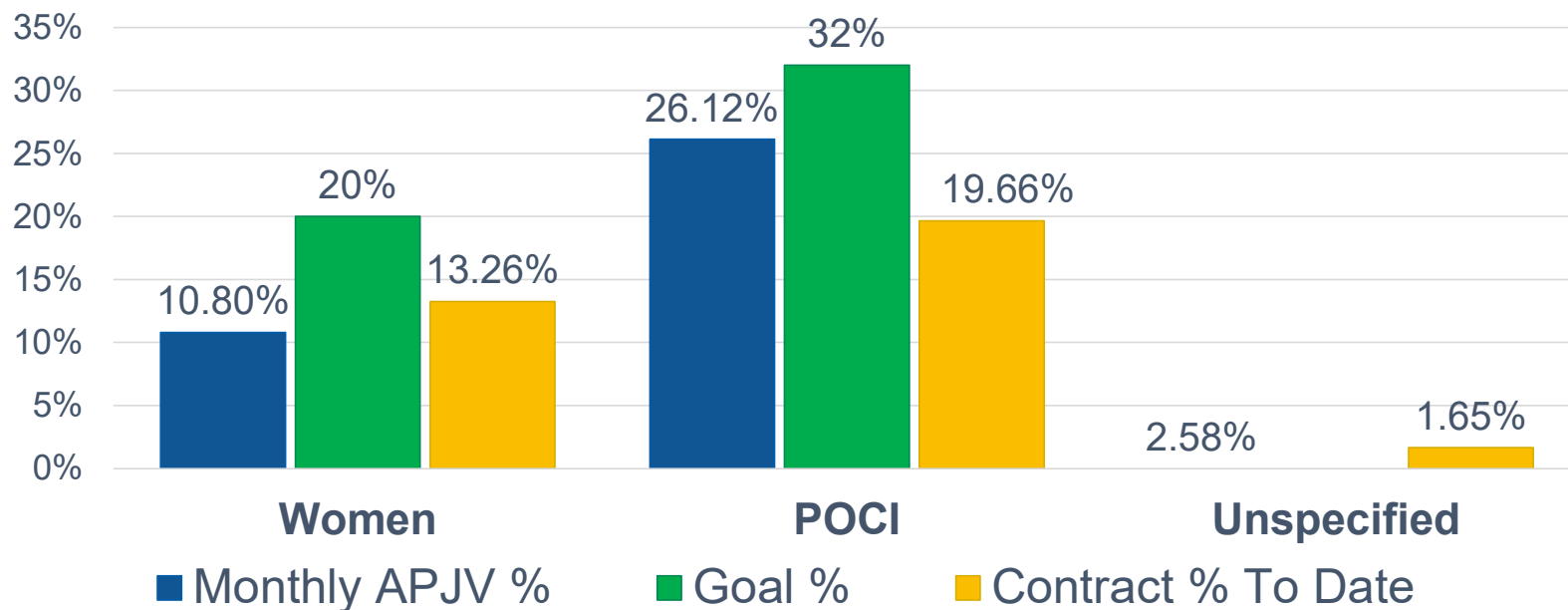
Trucking participation on Project being counted:

- MBE: 32,897 hours
- ZTS: 4,647 hours (no change)
- Rock-On Trucks: 4,692 hours

\*Based on MDHR Workforce Reports: Project Start through July 2023

# Systems Workforce Participation Percentage\*

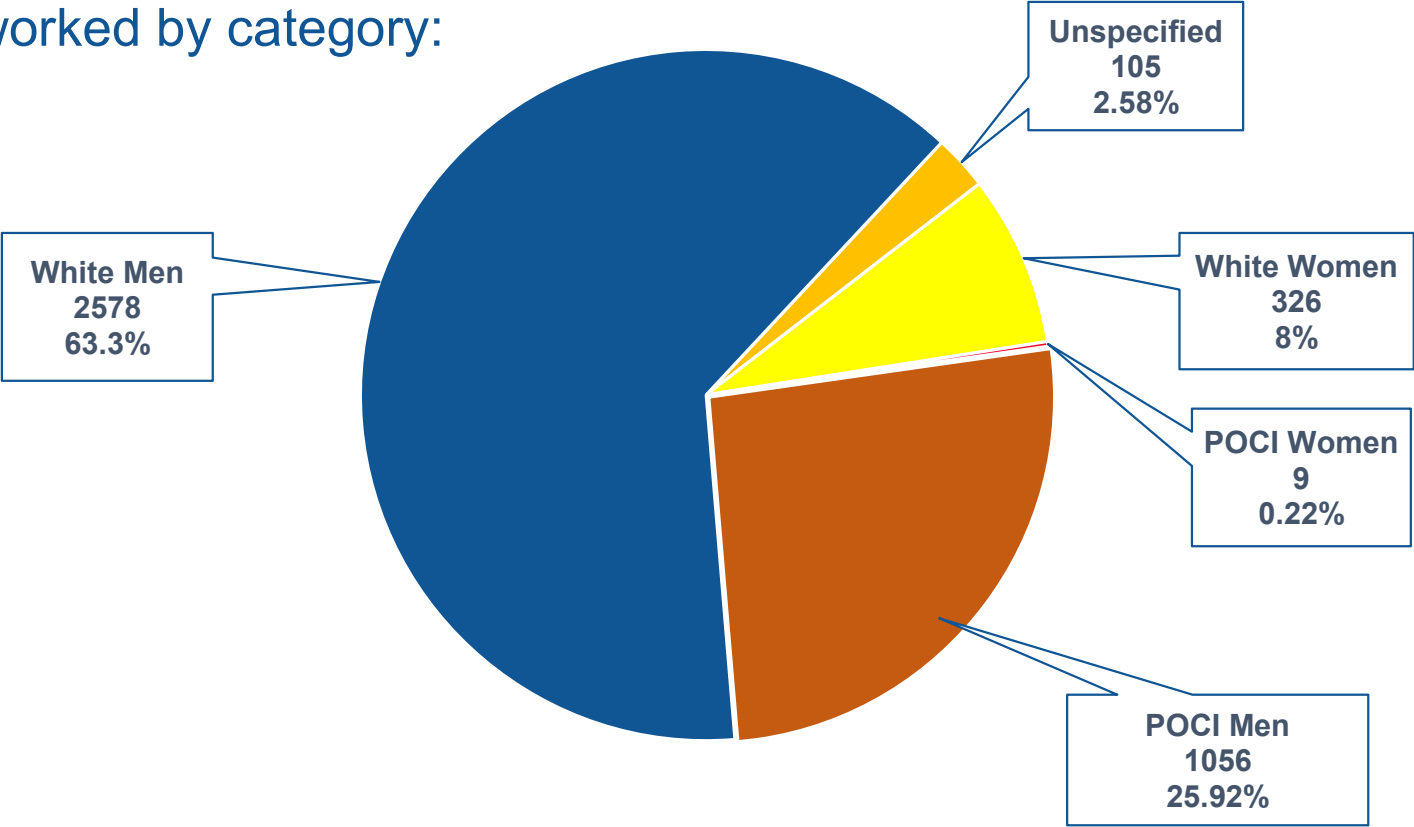
- July 2023: 4,073 hrs.
- Systems Construction Total: 33,624 hrs.



\*Based on MDHR Workforce Report for July 2023  
People of Color/Indigenous People (POCI)

# Systems Workforce Participation\*

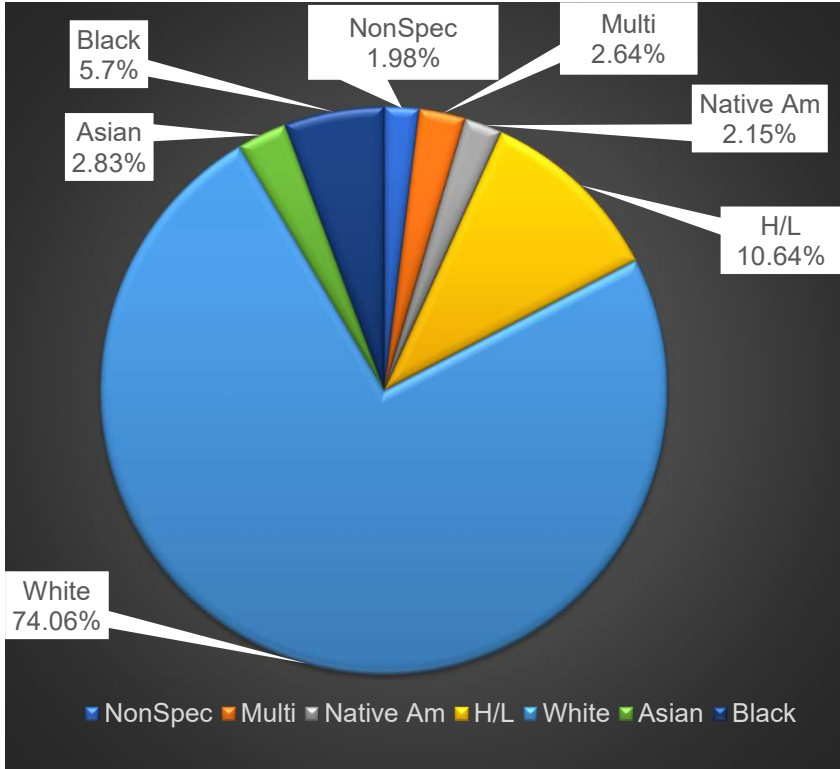
- July 2023: 4,073 hrs.
- Hours worked by category:



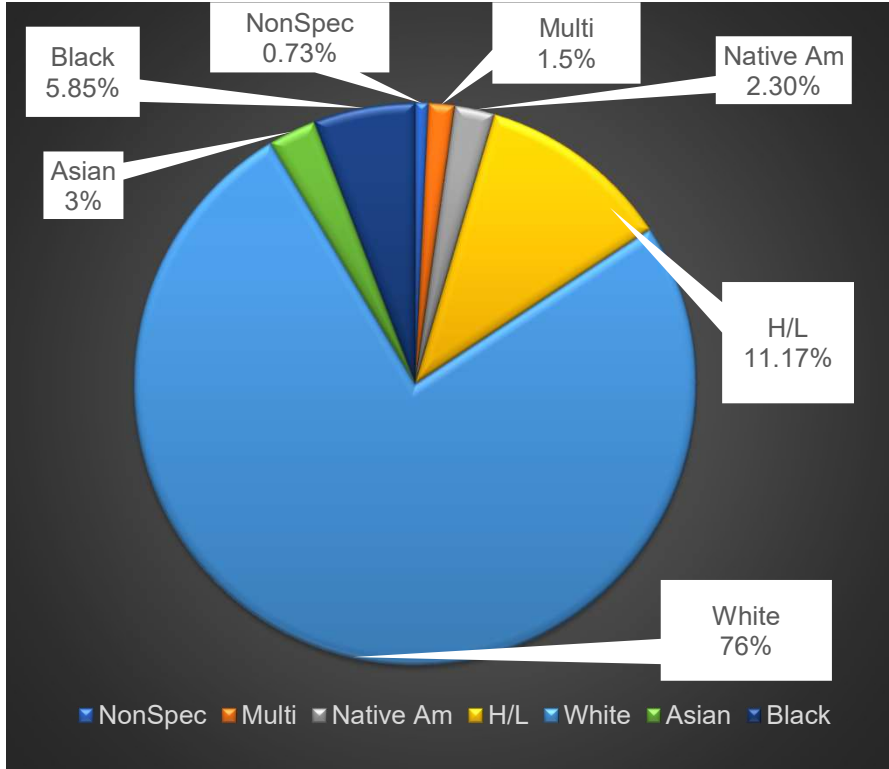
\*Based on MDHR Workforce Report for July 2023

# Civil Workforce Participation Disaggregated Percentages

July 2023



Project To Date



# Civil Workforce Participation Disaggregated\*

- Project Total: 2,873,192 hrs.
- Total POCI: 679,758 hrs. (23.66%)
- Total Women: 235,264 hrs. (8.19%)

Ethnic/Racial Group	Total Hours Women	Women Percent	Total Hours Men	Men 20,910 Percent	Total Hours	Total Percent
Asian Americans	4,291	0.15%	75,045	2.61%	79,337	2.76%
Black Americans	37,234	1.30%	130,840	4.55%	168,074	5.85%
Hispanic Americans	11,265	0.39%	309,754	10.78%	310,020	11.17%
Native Americans	18,334	0.64%	47,759	1.66%	66,094	2.30%
Multi-Racial	670	0.02%	44,548	1.55%	45,248	1.50%
White Americans	162,931	5.67%	2,009,071	69.93%	2,172,002	75.60%
Not Specified	509	0.02%	20,910	0.73%	21,418	0.75%

\*People of Color and Indigenous People (POCI) & Women participation from 12/1/18 – 7/31/2023

# Non-Consent Business

# Civil Contract Work

# Civil Contract DBE Updates





## AUGUST – DBEs working on project

- All Phase
- E&J Rebar
- Gunnar Electric
- JL Theis
- MBE
- On Call Pavement Sweepers
- PWS
- Public Solutions Group
- Reiner
- Rock On
- Safety Signs
- Standard Contracting
- Stonebrook Fence
- Sun Mechanical

# DBE Achievement Updates

## Recap:

- DBE & LMJV Round Table
  - September 7<sup>th</sup>
  - DBE's: Gunnar Electric, Sun Mechanical, PWS, and B&L Supply
  - Topics: Financials, Schedules, Prequalifications, Project Requirements

## DBE Achievement Updates

### Looking forward DBE actions:

- Construction Inclusion Week – October 16-21
  - Rosies/Robbies of the Rail
  - DBE – Safety Presentation from OSHA - TENTATIVE

# Civil Contract Workforce Achievement Updates





SWLRT Civil Project		MONTHLY TRADE PARTICIPATION				August-23	
TRADES	TOTAL	Male	Female	Female %	POCI	POCI %	
BrickLayers	98	98	0	0.00%	0	0.00%	
Carpenters	5724.6	5533.1	191.5	3.35%	1807.6	31.58%	
Cement Masons	2110	2100	10	0.47%	700.5	33.20%	
Electricians	7263.5	6718.5	545	7.50%	1545	21.27%	
Equipment Operators	12396.42	11782.92	613.5	4.95%	920.25	7.42%	
Glaziers	0	0	0	0.00%	0	0.00%	
Ironworkers	1092	1043.5	48.5	4.44%	222	20.33%	
Laborers	15289.65	14177.76	1111.89	7.27%	4622.14	30.23%	
Other (Sheetmetal)	396.78	396.78	0	0.00%	0	0.00%	
Painters	1314	1081	233	17.73%	756	57.53%	
Pile Drivers	2570	2570	0	0.00%	534.5	20.80%	
Plumbers	341	341	0	0.00%	0	0.00%	
Roofer	449.82	409.82	40	8.89%	58.75	13.06%	
Truck Drivers	1128.9	1050.15	78.75	6.98%	328	29.05%	
<b>Totals</b>	<b>49045.8</b>	<b>46252.4</b>	<b>2793.39</b>	<b>5.70%</b>	<b>11166.7</b>	<b>22.77%</b>	



<b>MONTHLY WORKFORCE - August 2023</b>					
<b>IN &amp; OUT BREAKDOWN (LMJV/Lunda/CS McCrossan)</b>					
<b>IN REPORT</b>	<b>TOTAL</b>	<b>WHITE MALE</b>	<b>WHITE FEMALE</b>	<b>MINORITY MALE</b>	<b>MINORITY FEMALE</b>
TRANSFERS	11	9	0	2	0
REHIRE/ RETURN	0	0	0	0	0
NEW HIRE	0	0	0	0	0
<b>OUT REPORT</b>	<b>TOTAL</b>	<b>WHITE MALE</b>	<b>WHITE FEMALE</b>	<b>MINORITY MALE</b>	<b>MINORITY FEMALE</b>
TRANSFERS	0	0	0	0	0
Lay-Off	0	0	0	0	0
Voluntary Leave	0	0	0	0	0

## Workforce GFE Updates

### Upcoming:

- Construction Inclusion Week - October 16-23
- Career Awareness Fair – St Paul Chamber  
October 17<sup>th</sup> @ River Center
- Rosies & Robbies of the Rail Round Table  
October 18th 2:30-5:00 Topic: Put me in Coach

# Systems Contract Work



# Systems Updates

- **APJV and Premier Electric participated in Mock Interviews at Summit Academy On September 15, 2023.**
- **APJV and Gunnar Electric combined to set a Total of Three TPSS and Two Communication Houses in August. There is One Additional TPSS to be set in September.**
- **Castrejon Incorporated (DBE) began Fieldwork on the project in Late August.**

# Workforce Achievement Update

SWLRT – Systems Workforce

July 2023

Trade Participation by Hours

TRADES	Total	Male	Female	Female %	POCI	POCI %
Carpenter	13.00	13.00	-	0.00%	-	0.00%
Electricians	3,020.25	2,588.75	431.50	14.29%	899.75	29.79%
Equipment Operators	674.15	666.15	8.00	1.19%	77.00	11.42%
Laborers	401.75	401.75	-	0.00%	139.00	34.60%
Roofer	77.00	77.00	-	0.00%	72.00	93.51%
Surveyors	18.00	18.00	-	0.00%	-	0.00%
Traffic Control	1.25	1.25	-	0.00%	1.25	100.00%
<b>TOTALS</b>	<b>4,205.40</b>	<b>3,765.90</b>	<b>439.50</b>	<b>10.45%</b>	<b>1,189.00</b>	<b>28.27%</b>

# Announcements

## Public Invitation

- Each speaker is limited to a three-minute presentation
- Pre-register as you sign in for attendance at the start of the meeting



## Closing

- Next Meeting date: October 19th, 2023, from 2:00 - 4:00 pm will be held virtually
- Adjourn

## **MORE INFORMATION**

**Website:** [GreenLineExt.org](https://GreenLineExt.org)

**Email:** [swlrt@metrotransit.org](mailto:swlrt@metrotransit.org)

**Twitter:** [@GreenLineExtMN](https://twitter.com/GreenLineExtMN)

**Instagram:** [@GreenLineExtMN](https://www.instagram.com/GreenLineExtMN)