



Disadvantaged Business Enterprise and Workforce Advisory Committee

June 26, 2025



EDEN PRAIRIE | MINNETONKA | EDINA | HOPKINS | ST. LOUIS PARK | MINNEAPOLIS

Today's Topics

- Project Update
- Consent Business
- Non-consent Business
- Committee Discussion
- Announcements
- Public Invitation



Project Office Update

Realigned temporary trail by West Lake Street Station in Minneapolis



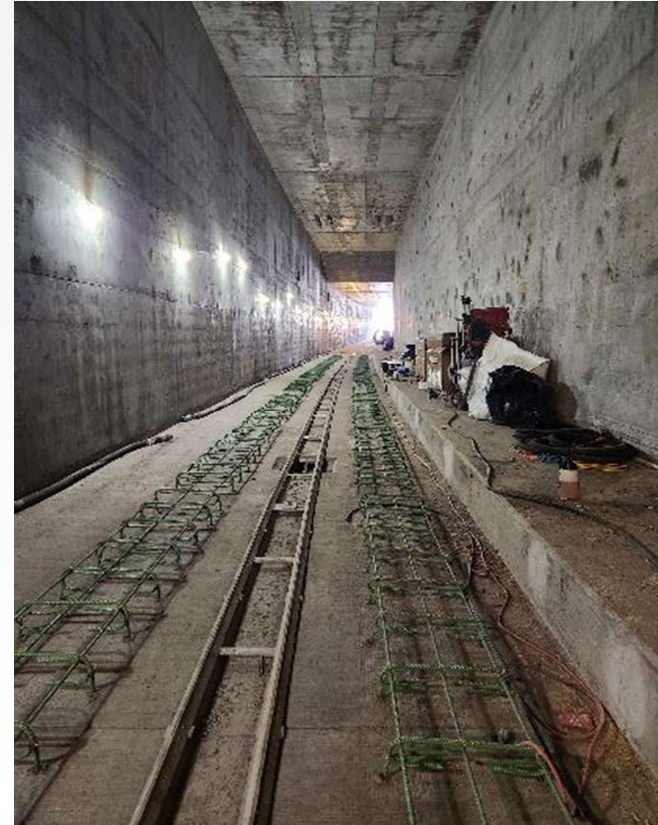
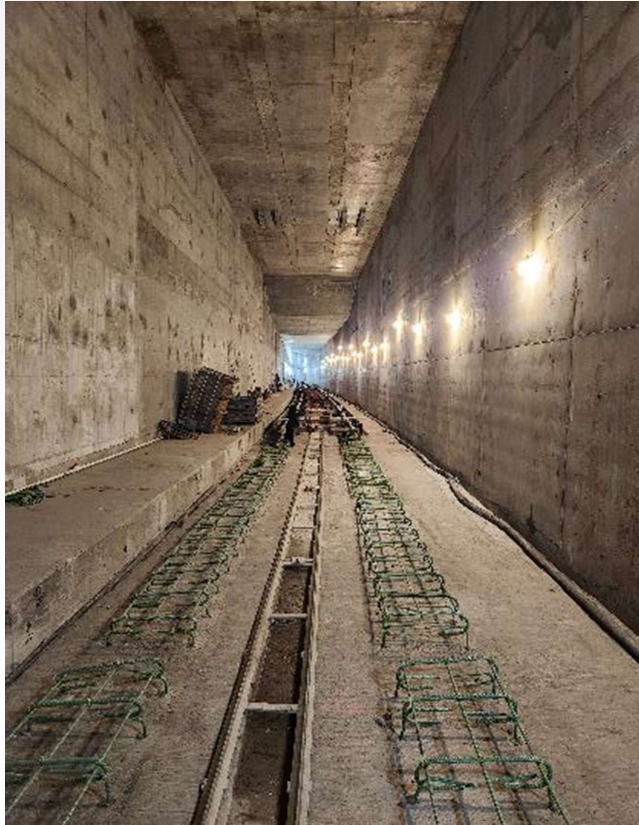
LRT track construction near West 21st Street Station in Minneapolis



Completed freight track adjacent to backfilled Kenilworth LRT Tunnel near West Lake Street Station in Minneapolis



Plinth construction inside the Kenilworth LRT Tunnel in Minneapolis



Bassett Creek Valley Station and the Luce Line Trail Bridge in Minneapolis



Consent Business

DBE Achievement as of April 30, 2025

Contractor	Contract Description	Contract Amount	Contractor Billed to Date	DBE Billed to Date	% DBE to Date	As of Date
LMJV 16% Goal	Civil	\$1,069,560,506	\$1,046,007,793	\$246,059,897	23.5%	4/30/25
APJV 12% Goal	Systems ¹	\$222,655,211	\$183,678,992	\$30,869,275	16.8%	4/30/25
Shaw Lundquist 18% Goal	HRSF	\$14,141,522	\$2,621,084	\$324,683	12.4%	4/30/25
	Closed Contracts	\$41,626,766	\$41,626,766	\$6,539,604	15.7%	
		Contract Amount	Billed to Date	DBE Billed to Date	% DBE to Date	
15% Goal		\$1,347,984,005	\$1,273,934,635	\$283,793,459	22.3%	

¹ The contract amounts were adjusted to exclude extension of time settlement payments.

Non-Consent Business

Civil Contract DBE Updates



DBEs Currently – On Site

- E&J Rebar
- Gunnar Electric
- MBE
- On Call Pavement Sweeping
- PWS
- Reiner
- Rock On Trucks
- Safety Signs
- Stonebrook
- ZTS Trucking

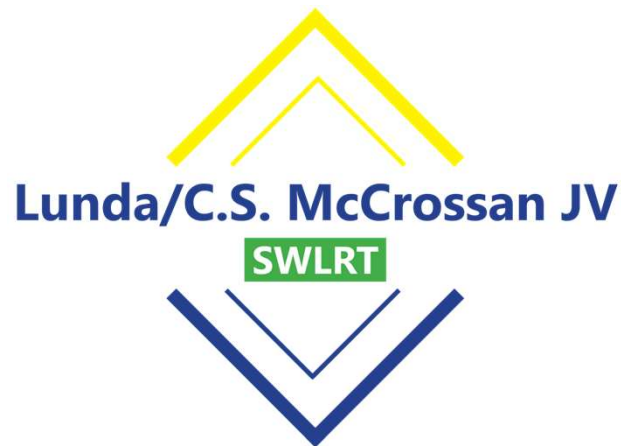
DBE Completion Tracking

NO CHANGE SINCE 1/2025

[illegible]

- Contractors finishing by November
- Many will have Punchlist items after November
- The Civil DBE Tracking Report will not show business as complete until all work is complete and LMJV team approves completion status

Civil Contract Workforce Achievement Updates





PROJECT WORKFORCE PARTICIPATION

Total to Date

Total Hours: 4,016,191.04
POCI: 19%
Female: 6%

Month of May

Month Hours: 21800
POCI: 15%
Female: 3%



WORKFORCE REMAINING

- **Final leg of the SWLRT Civil project**
- **Most contractors/workforce done by November**
Punch Lists should be only remaining workforce needs after that
- **Workforce Outreach efforts will continue**
Education, retention, advocacy, etc participation of our team.
- **SWLRT Civil Project Inclusion Summary**
In the works - watch for preview in the next couple of months

Systems Contract Work

Systems Update

- APJV does not expect any significant changes in crew size. Plan to hold steady at 8,000 Craft Labor Hours per month through 2025.
- APJV participated in Mock Interviews at Summit Academy on Friday, June 6, 2025
- APJV participated in Summit Academy Electrician Advisory Committee Meeting on Wednesday, May 14, 2025
- Labor Hours
 - March 2025 – 4,979.25 hours, 24.43% POCl, 5.19%Female
 - April 2025 – 3,527.50 hours, 10.93% POCl, 7.99%Female

Workforce Achievement Update

SWLRT – Systems Workforce
Trade Participation by Hours

March 2025

TRADES	Total	Male	Female	Female %	POCI	POCI %
Cement Finisher	22.00	22.00	-	0.00%	13.50	61.36%
Electricians	3,538.25	3,287.75	250.50	7.08%	622.00	17.58%
Equipment Operators	521.75	521.75	-	0.00%	122.75	23.53%
Laborers	574.75	566.75	8.00	1.39%	298.50	51.94%
Sprinkler Fitters	322.50	322.50	-	0.00%	159.50	49.46%
TOTALS	4,979.25	4,720.75	258.50	5.19%	1,216.25	24.43%

Workforce Achievement Update

SWLRT – Systems Workforce
Trade Participation by Hours

April 2025

TRADES	Total	Male	Female	Female %	POCI	POCI %
Electricians	3,090.00	2,808.00	282.00	9.13%	339.00	10.97%
Equipment Operators	339.25	339.25	-	0.00%	-	0.00%
Laborers	38.25	38.25	-	0.00%	16.50	43.14%
Sprinkler Fitters	60.00	60.00	-	0.00%	30.00	50.00%
TOTALS	3,527.50	3,245.50	282.00	7.99%	385.50	10.93%

APJV – Systems Contract, DBE with Fieldwork and Reported Hours in LCPTracker during March & April 2025

- Gunnar Electric
- Castrejon Inc.
- Stonebrook Fence

Hopkins Light Rail Facility

DBE Commitment Report Hopkins Light Rail Facility



DBE Commitments

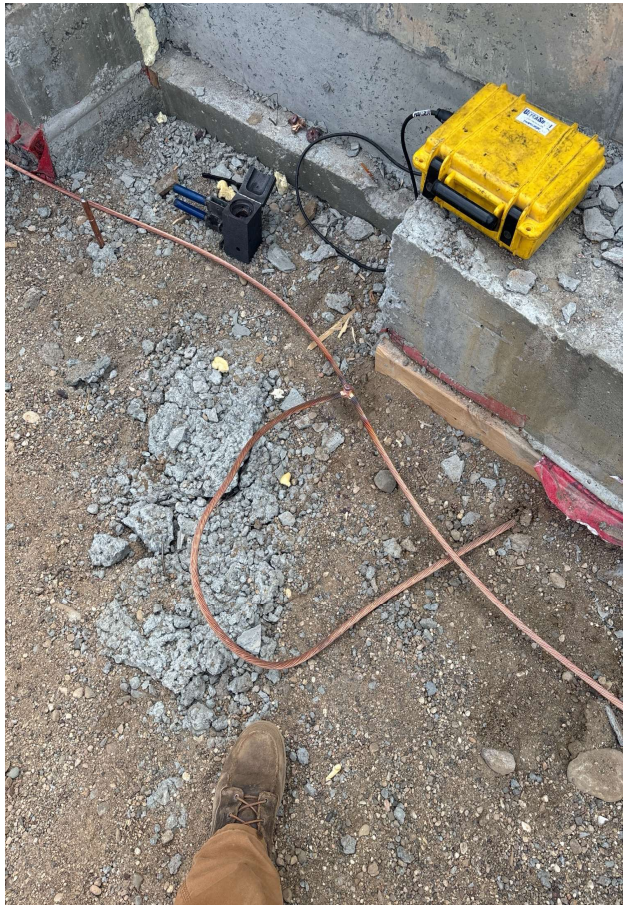
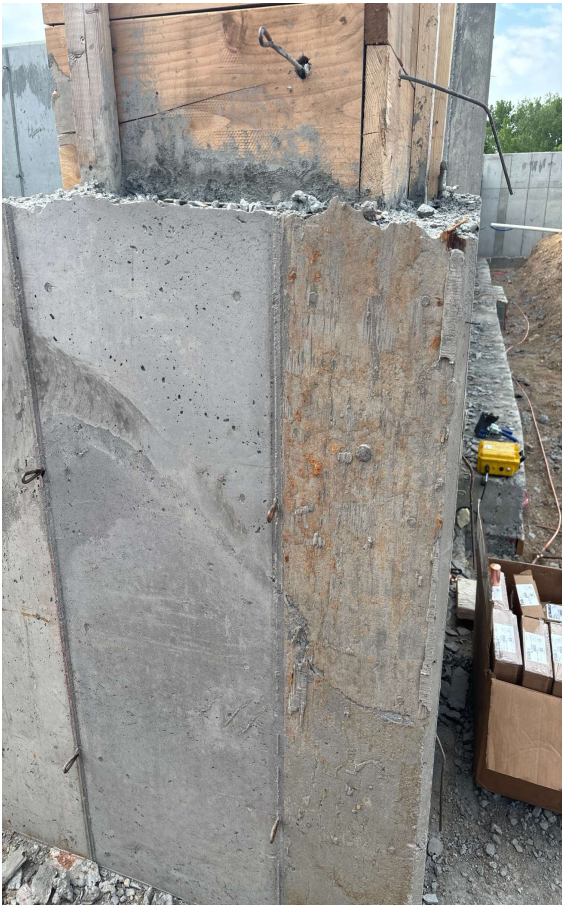
DBE Subcontractor	Contract Description	Contract Amount	DBE Credit	Allowable Contract Credit
AW Painting	Painting	\$55,497	100%	\$55,497
C&S Mgmt dba Waterproofing by Experts Inc	Waterproofing	\$85,364	100%	\$85,364
Gunnar Electric	Electrical	\$1,749,400	100%	\$1,749,400
LAC Enterprises dba Windsor Companies	Landscaping	\$89,709	100%	\$89,709
PWS Inc.	Utilities	\$230,024	100%	\$230,024
M3Sixty	Distribute to Flynn Midwest Metal Building System	\$840,000	40%	\$336,000
		Contract Amount	DBE Contract Credit Amount	DBE %
18% Goal		\$14,141,522	\$2,545,994	18.0%

DBE Project Timeline and Project Updates

DBE Subcontractor	Projected On-Site
Gunnar Electric has been onsite since May 28 th and will continue to be onsite as they start underground work.	05/28/2025
M3Sixty (Supplies Delivered for Flynn Midwest)	06/30/2025
PWS will be onsite to finish up the utility work.	July 7 th -14 th
AW Painting	11/05/2025

*We have a tentative steel delivery for 08/22/2025.

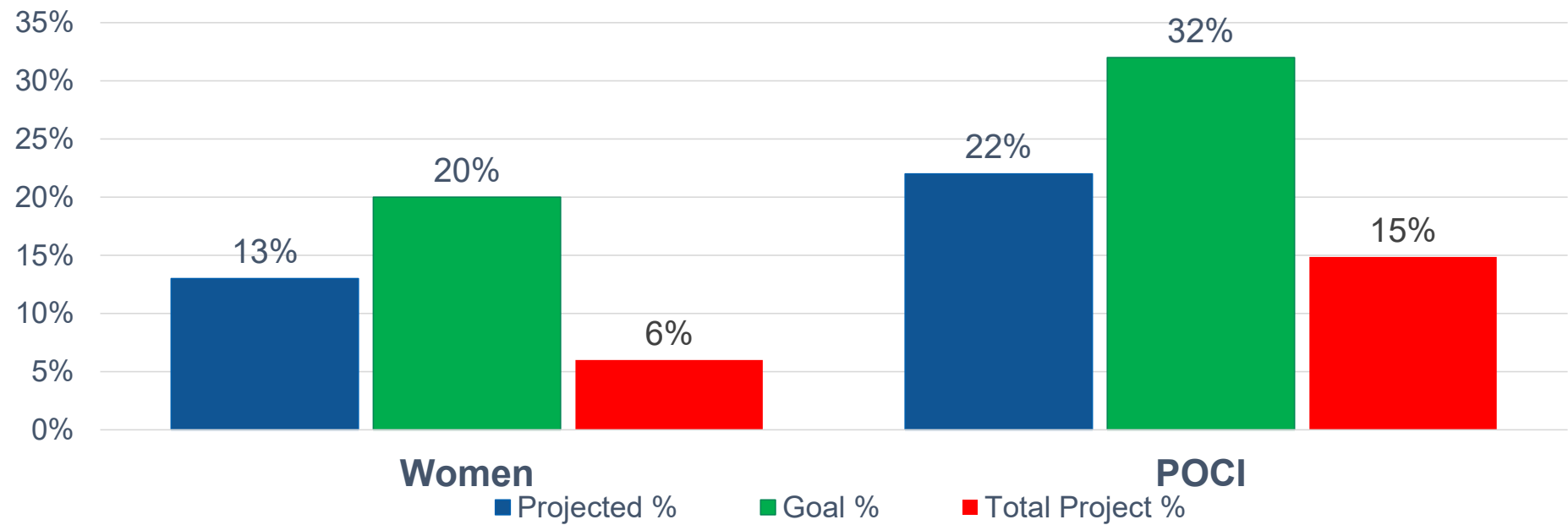
Gunnar Electric has been working on the ground loop.



Current Workforce Participation

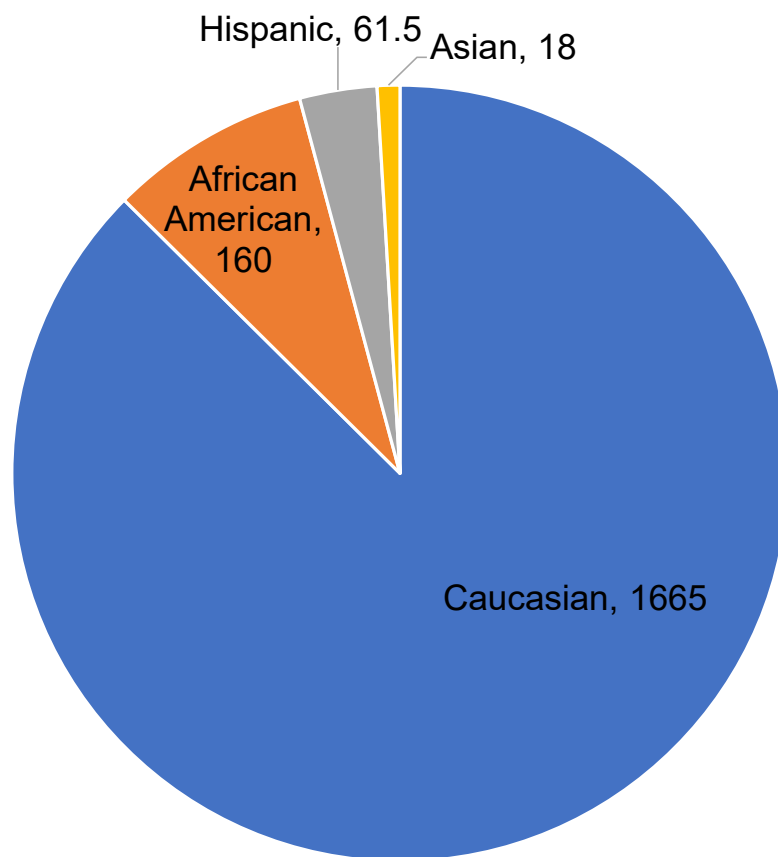
Workforce Participation Percentage*

- Projected Project Total Hours: 18,402 hrs.
- Current Total Hours: 1611.60 hrs.



*Based on Pre-Construction Subcontractor Packets received as of 03/31/2025

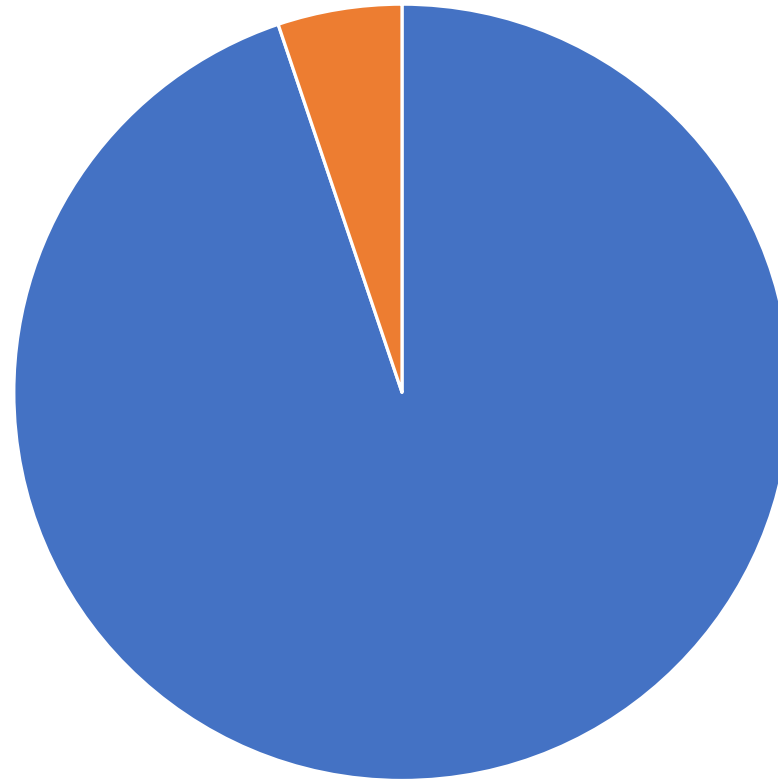
Distribution of Diversity Hours by Race through April 30, 2025



■ Caucasian ■ African American ■ Hispanic ■ Asian ■ Native American ■ Other ■ Not Specified

Distribution of Diversity Hours by Gender through April 30, 2025

Female, 98.51



Male, 1806

■ Male

■ Female

Trade Participation By Hours through April 30, 2025

Trades	Total	Male	Female	Female %	POCI	POCI %
Electricians	292	278	14	4.8%	171	59%
Equipment Operators	835.25	822.25	13	1.6%	22.5	2.7%
Laborers	475.50	475.50	0.00	0%	34	7.15%
Plumbers	16	16	0.00	0%	12	75%
Plasterer	62	62	0.00	0%	0	0%
Truck Drivers	223.35	151.84	71.51	32%	0	0%
Overall Total	1904.1	1805.59	98.51	5.17%	239.50	12.6%

Announcements

Public Invitation

- Each speaker is limited to a three-minute presentation
- Pre-register as you sign in for attendance at the start of the meeting



Closing

- Next Meeting date: August 24, 2025, from 2:00 – 4:00 PM
 - Held virtually
- Adjourn

MORE INFORMATION

Website: GreenLineExt.org

Email: swlrt@metrotransit.org

Twitter: [@GreenLineExtMN](https://twitter.com/GreenLineExtMN)

Instagram: [@GreenLineExtMN](https://www.instagram.com/GreenLineExtMN)