



SOUTHWEST
Green Line LRT Extension

**METRO Green Line Extension
Hopkins Construction Town Hall**

Nkongo Cigolo, Community Outreach Coordinator

February 24, 2021



EDEN PRAIRIE | MINNETONKA | EDINA | HOPKINS | ST. LOUIS PARK | MINNEAPOLIS

1

November 2018: Project Groundbreaking!



EDEN PRAIRIE | MINNETONKA | EDINA | HOPKINS | ST. LOUIS PARK | MINNEAPOLIS



2

2

Today's Topics

- Project Overview
- 2020 Construction Recap
- 2021 Construction Overview



EDEN PRAIRIE | MINNETONKA | EDINA | HOPKINS | ST. LOUIS PARK | MINNEAPOLIS



3

3

Project Overview

EDEN PRAIRIE | MINNETONKA | EDINA | HOPKINS | ST. LOUIS PARK | MINNEAPOLIS

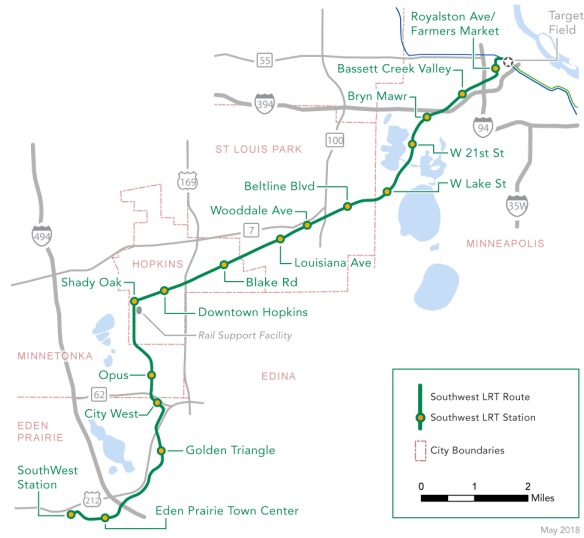


4

4

METRO Green Line Extension

- 14.5 miles
- 16 stations
- Single seat trips to downtown Mpls, U of M, St. Paul
- Connections to Airport and Mall of America via Blue Line



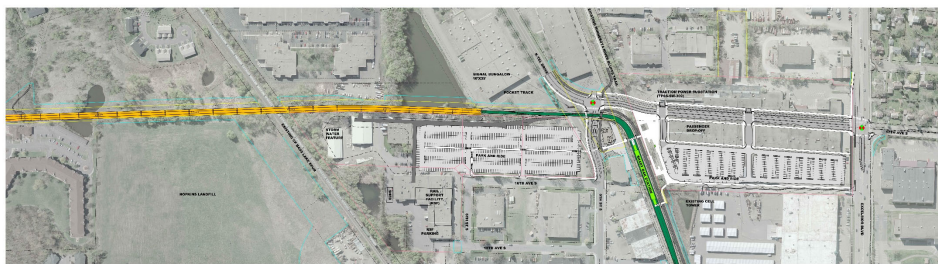
EDEN PRAIRIE | MINNETONKA | EDINA | HOPKINS | ST. LOUIS PARK | MINNEAPOLIS



5

5

Shady Oak Station



EDEN PRAIRIE | MINNETONKA | EDINA | HOPKINS | ST. LOUIS PARK | MINNEAPOLIS

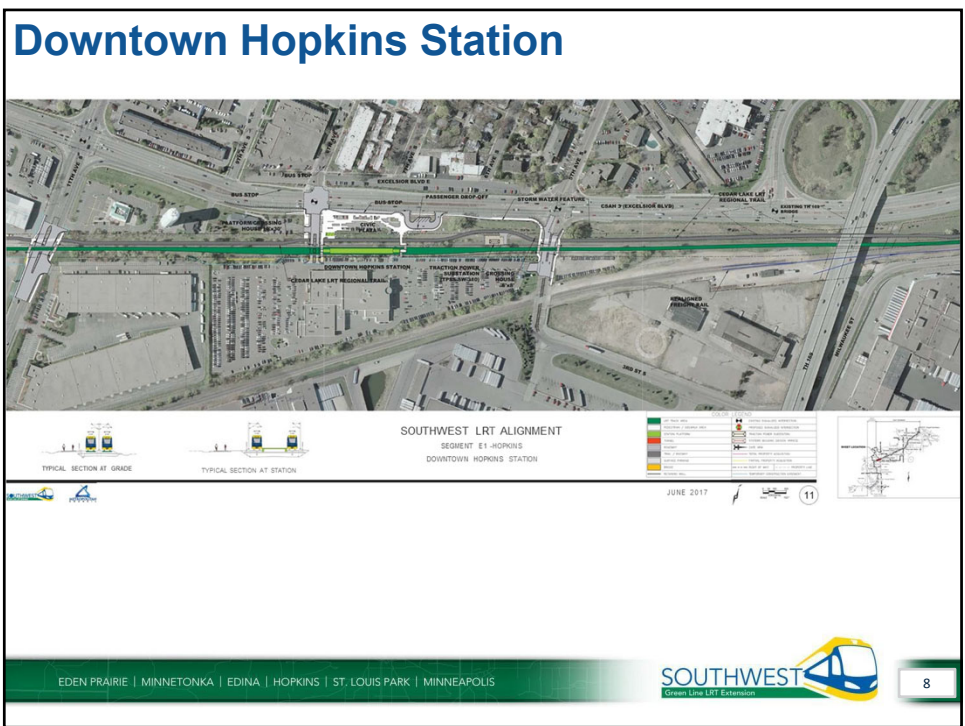


6

6



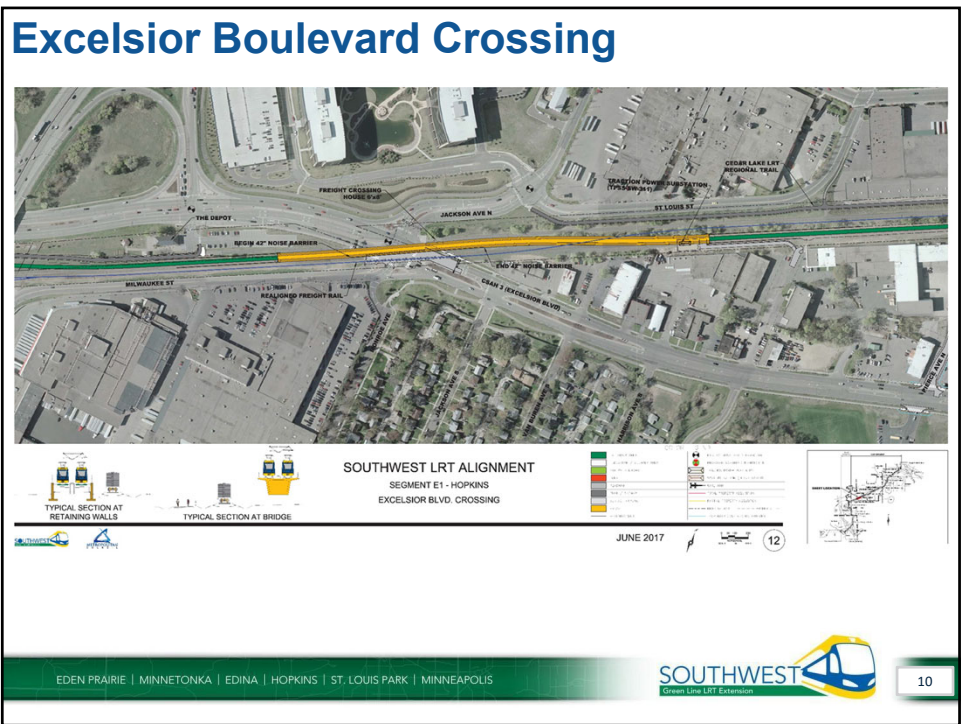
7



8

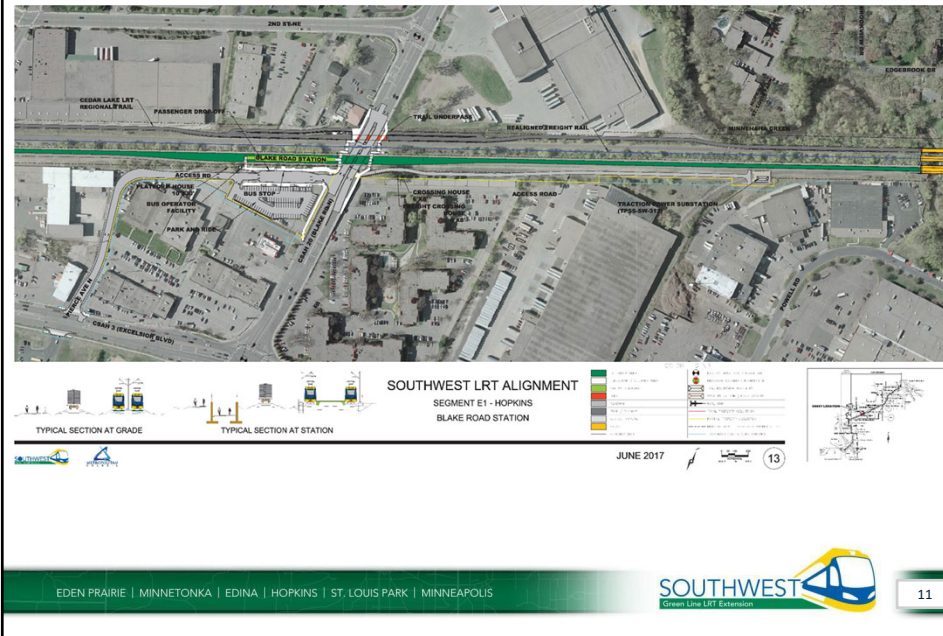


9



10

Blake Road Station



11

Blake Road Station



12

Project Update

EDEN PRAIRIE | MINNETONKA | EDINA | HOPKINS | ST. LOUIS PARK | MINNEAPOLIS



13

13

2020 Construction Highlights

- Received FFGA on September 14
- Civil construction 35% complete
- Under construction:
 - 8 stations underway out of 16
 - 23 bridges underway or completed out of 29
 - 5 tunnels underway out of 8
 - 47% of retaining wall work completed: 127 walls total
- 94% of 946 private utilities completed
- 65% of nearly 1,300 public utilities completed
- Completed all 15 building demolitions
- Systems mobilized and in design and procurement
- Franklin O&M Facility modifications 40% complete
- 11 LRVs delivered

EDEN PRAIRIE | MINNETONKA | EDINA | HOPKINS | ST. LOUIS PARK | MINNEAPOLIS



14

14

2020 Construction Recap

EDEN PRAIRIE | MINNETONKA | EDINA | HOPKINS | ST. LOUIS PARK | MINNEAPOLIS

SOUTHWEST
Green Line LRT Extension

15

15

Minnetonka-Hopkins Bridge

EDEN PRAIRIE | MINNETONKA | EDINA | HOPKINS | ST. LOUIS PARK | MINNEAPOLIS

SOUTHWEST
Green Line LRT Extension

16

16

Shady Oak Station



EDEN PRAIRIE | MINNETONKA | EDINA | HOPKINS | ST. LOUIS PARK | MINNEAPOLIS

SOUTHWEST
Green Line LRT Extension

17

17

11th Avenue Crossing



EDEN PRAIRIE | MINNETONKA | EDINA | HOPKINS | ST. LOUIS PARK | MINNEAPOLIS

SOUTHWEST
Green Line LRT Extension

18

18

Downtown Hopkins Station



EDEN PRAIRIE | MINNETONKA | EDINA | HOPKINS | ST. LOUIS PARK | MINNEAPOLIS



19

19

Blake Road Regional Trail Underpass



EDEN PRAIRIE | MINNETONKA | EDINA | HOPKINS | ST. LOUIS PARK | MINNEAPOLIS



20

20

LRT Bridge at Excelsior Boulevard



EDEN PRAIRIE | MINNETONKA | EDINA | HOPKINS | ST. LOUIS PARK | MINNEAPOLIS



21

21

Light Rail Vehicles: 11 Vehicles Delivered

- LRV 317 having interior wiring harnesses routed and connected in the coves



EDEN PRAIRIE | MINNETONKA | EDINA | HOPKINS | ST. LOUIS PARK | MINNEAPOLIS




22

22

2021 Construction Overview

EDEN PRAIRIE | MINNETONKA | EDINA | HOPKINS | ST. LOUIS PARK | MINNEAPOLIS

SOUTHWEST
Green Line LRT Extension



23


23

2021 Construction Highlights

- Continue work on Minnetonka-Hopkins bridge through 2021
- Advance Shady Oak and Downtown Hopkins Stations
- Road impacts
 - 8th Avenue South: utilities and roadway work
 - Excelsior Boulevard: LRT bridge construction
 - Blake Road North: regional trail underpass

EDEN PRAIRIE | MINNETONKA | EDINA | HOPKINS | ST. LOUIS PARK | MINNEAPOLIS

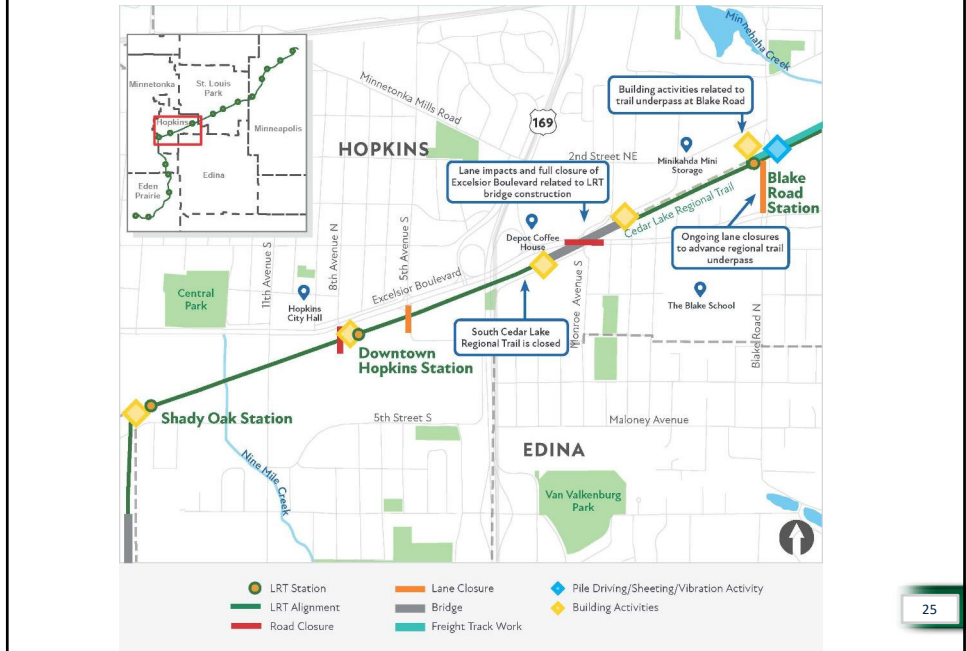
SOUTHWEST
Green Line LRT Extension



24

24

Hopkins: 2021 Construction Highlights



25

Contact us

- Construction Hotline: **612-373-3933**
- Nkongo Cigolo, Community Outreach Coordinator
 - Email: nkongo.cigolo@metrotransit.org
 - Telephone: 612-373-3825

26

Stay Updated!

Online:

SWLRT.org

Twitter:

@SouthwestLRT

Facebook:

@MetropolitanCouncil

Instagram:

@southwest_lrt



EDEN PRAIRIE | MINNETONKA | EDINA | HOPKINS | ST. LOUIS PARK | MINNEAPOLIS



27