

SOUTHWEST

Green Line LRT Extension



Minneapolis Rail Safety Meeting

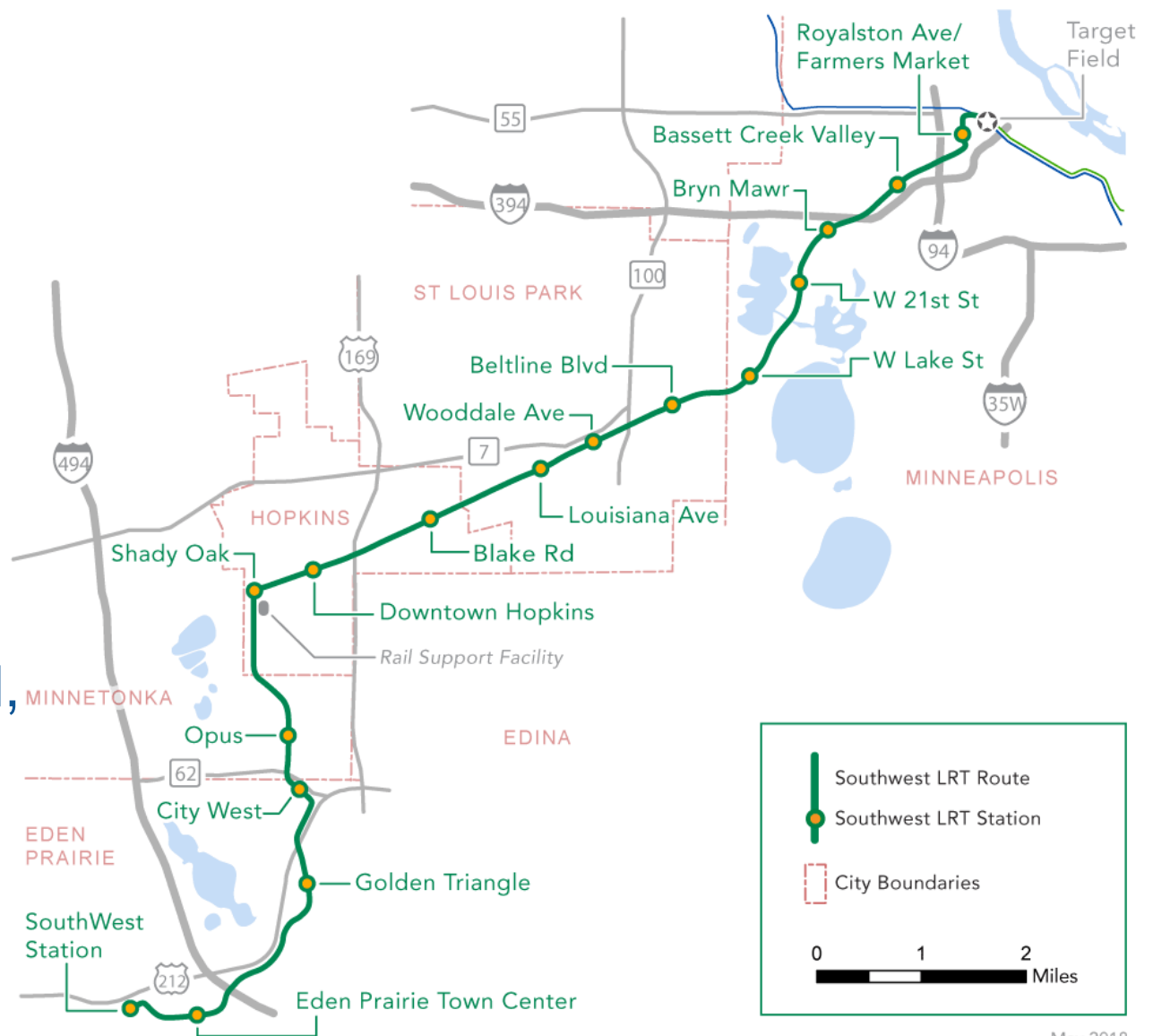
Jim Alexander, P.E.
Project Director

September 30, 2020



Southwest LRT

- 14.5 miles double track
- 16 new stations
- One seat ride from Eden Prairie to Downtown St. Paul
- Direct service to Downtown Minneapolis, U of M, stadiums
- Connections Blue Line and Northstar



May 2018

Historic Freight Rail Infrastructure



Cedar Lake Yard

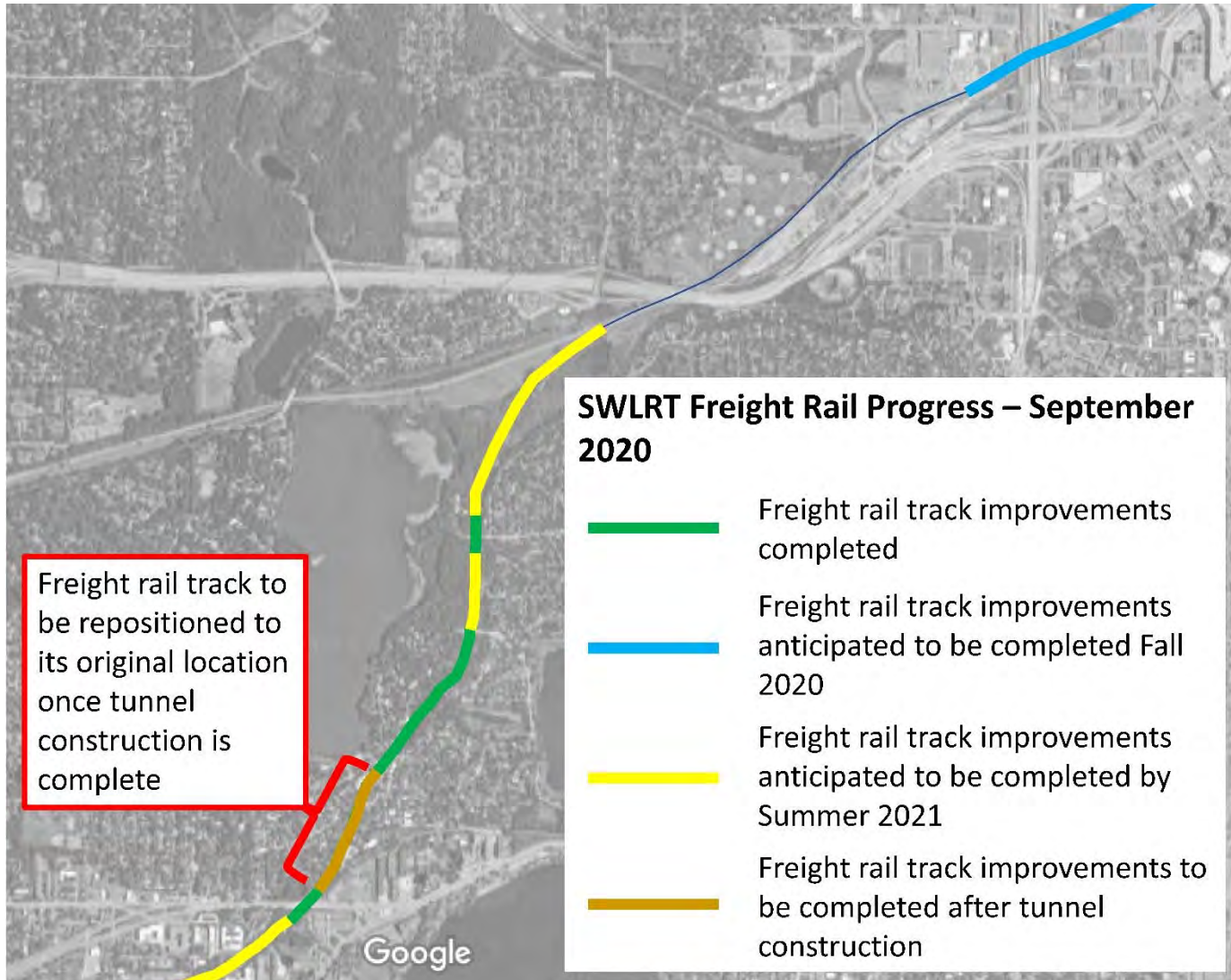
1950 Aerial Photo



Old Cedar Channel
Freight Rail Bridge



Minneapolis Freight Rail Construction Activities



SWLRT Freight Rail Improvements



Old Freight Rail Bridge



New Freight Rail Bridge

SWLRT Freight Rail Improvements

Old Freight Rail Track



New Freight Rail Track

Tunnel Portals



NORTH PORTAL VIEWING AREA BIRD'S EYE VIEW LOOKING NORTHWEST



NORTH PORTAL VIEWING AREA PERSPECTIVE VIEW LOOKING NORTH



SOUTH PORTAL VIEWING AREA BIRD'S EYE VIEW LOOKING WEST



SOUTH PORTAL VIEWING AREA PERSPECTIVE VIEW LOOKING SOUTH WEST

West Lake Street Station



Bryn Mawr Station

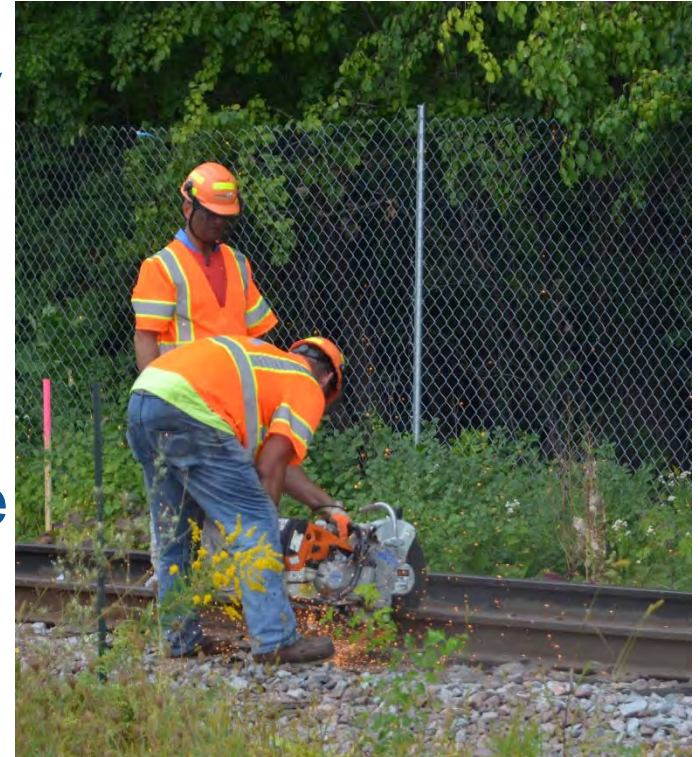


Royalston Ave/Farmers Market Station



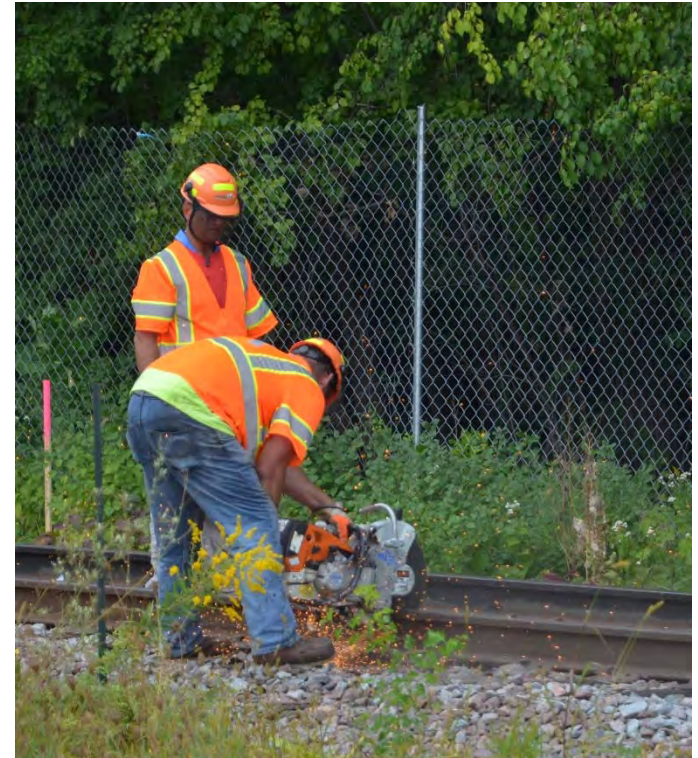
Freight Rail Monitoring and Maintenance

- Freight rail track conditions are monitored multiple times per workday
- Monitoring conforms to contract specifications, which are more conservative than FRA's track safety standards
- If a track is inspected and found to be out of compliance, work is halted; TC&W flagger is contacted immediately to coordinate train movement until track is brought into compliance
- Rail maintenance activities are on-going to maintain serviceability



Construction Safety

- Safety training is required for all construction staff
- Construction safety is under the jurisdiction of OSHA/MNOSHA and FRA
 - Federal and Minnesota Occupational Safety and Health Administration
 - Federal Railroad Administration
 - Both agencies can conduct unannounced and announced inspections during construction
 - Both agencies have jurisdiction to issue fines for safety/rule infractions
- Crane incident: LMJV to address at meeting



Stay Updated!

Online:

SWLRT.org

Twitter:

@SouthwestLRT

Flickr:

[flickr.com/photos/metcouncil/albums](https://www.flickr.com/photos/metcouncil/albums)

Facebook:

@MetropolitanCouncil

Instagram:

@southwest_lrt

