

SOUTHWEST

Green Line LRT Extension



Kenilworth Landscape Design Community Meeting

Jim Alexander/John Slack

Wednesday, November 18, 2015



Today's Topics

- Welcome and Recap
- Review Final Landscape Design Recommendations
- Next Steps
- Questions and Discussion



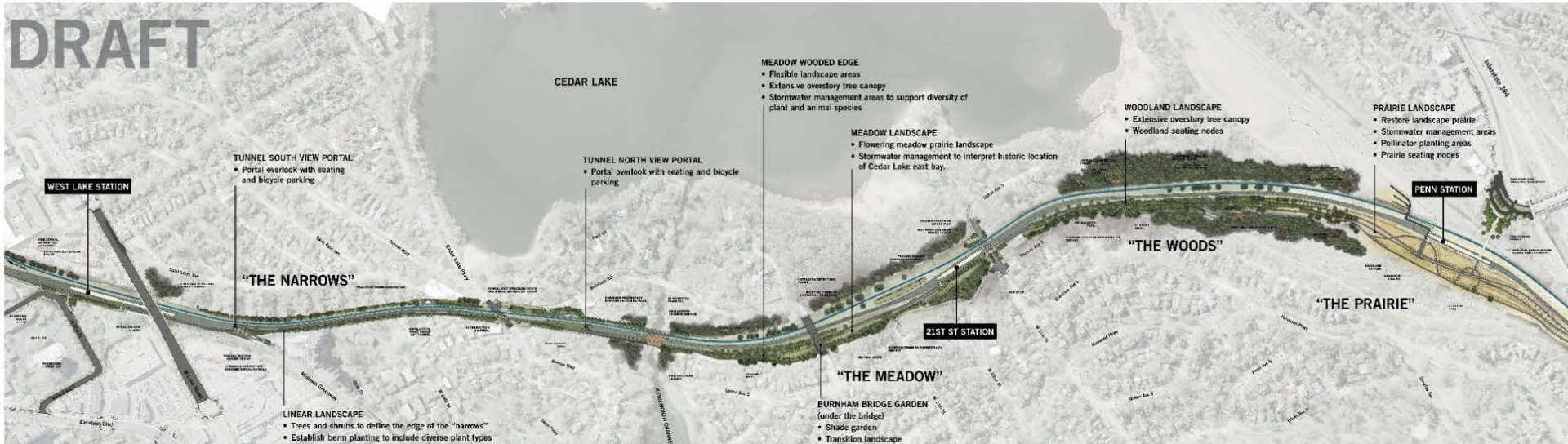
Welcome and Recap

Landscape Design Public Engagement To Date

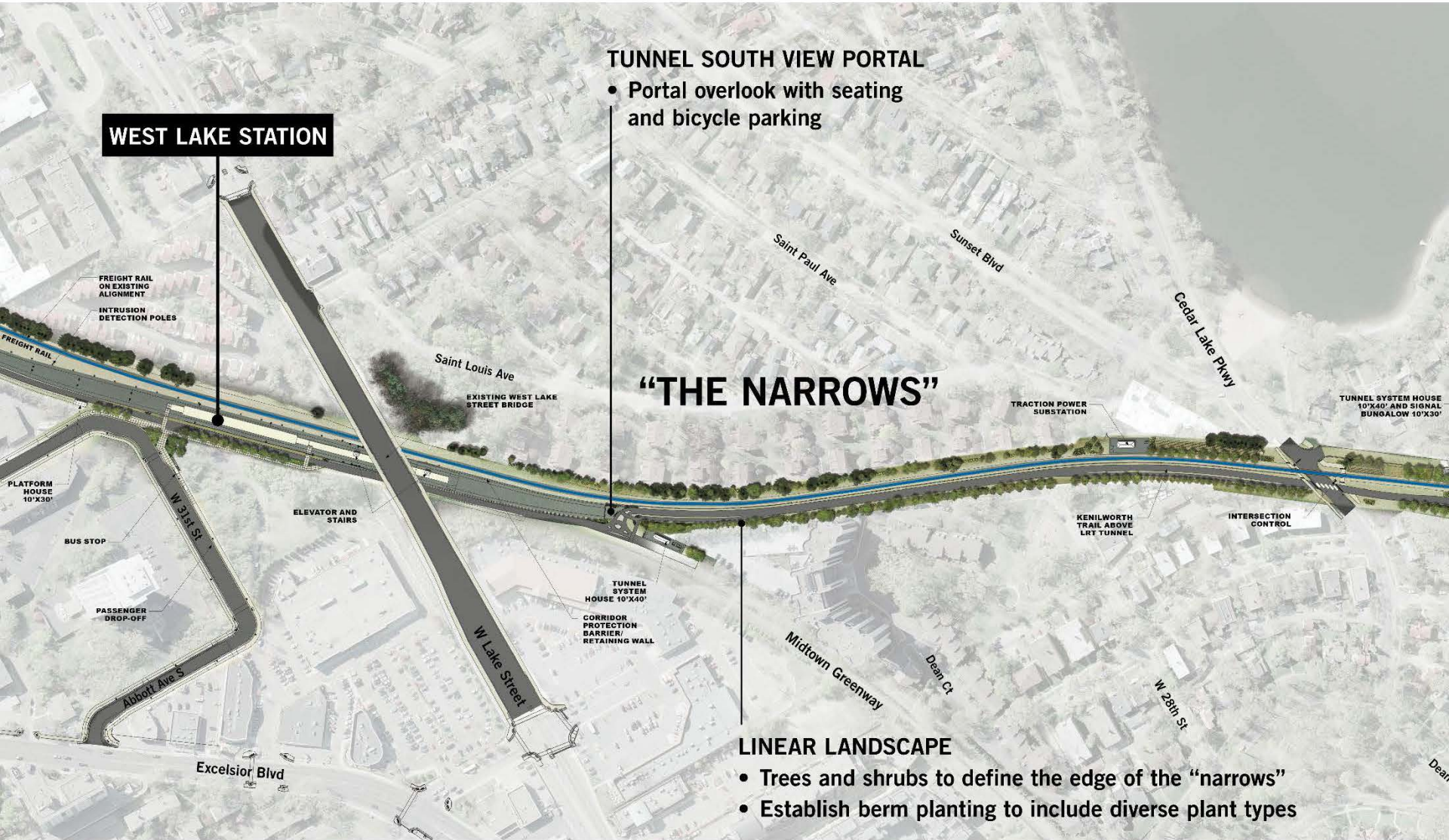
	Topic	Date
Committee Meeting	Kick-off Meeting	May 19
Community Workshop	Listening/Information Gathering	June 13
Committee Meeting	Brainstorming	June 25
Committee Meeting	Discuss Draft Concepts	July 16
Committee Meeting	Walking Tour	July 22
Community Workshop	Present Concept Designs, Seek Input	Aug 8
Pop-Up Events	Present Concept Designs, Seek Input	July 11-15
Committee Meeting	Confirm Direction	Aug 24
Committee Meeting	Review Design Recommendations	Oct 26

Review Final Landscape Design Recommendations

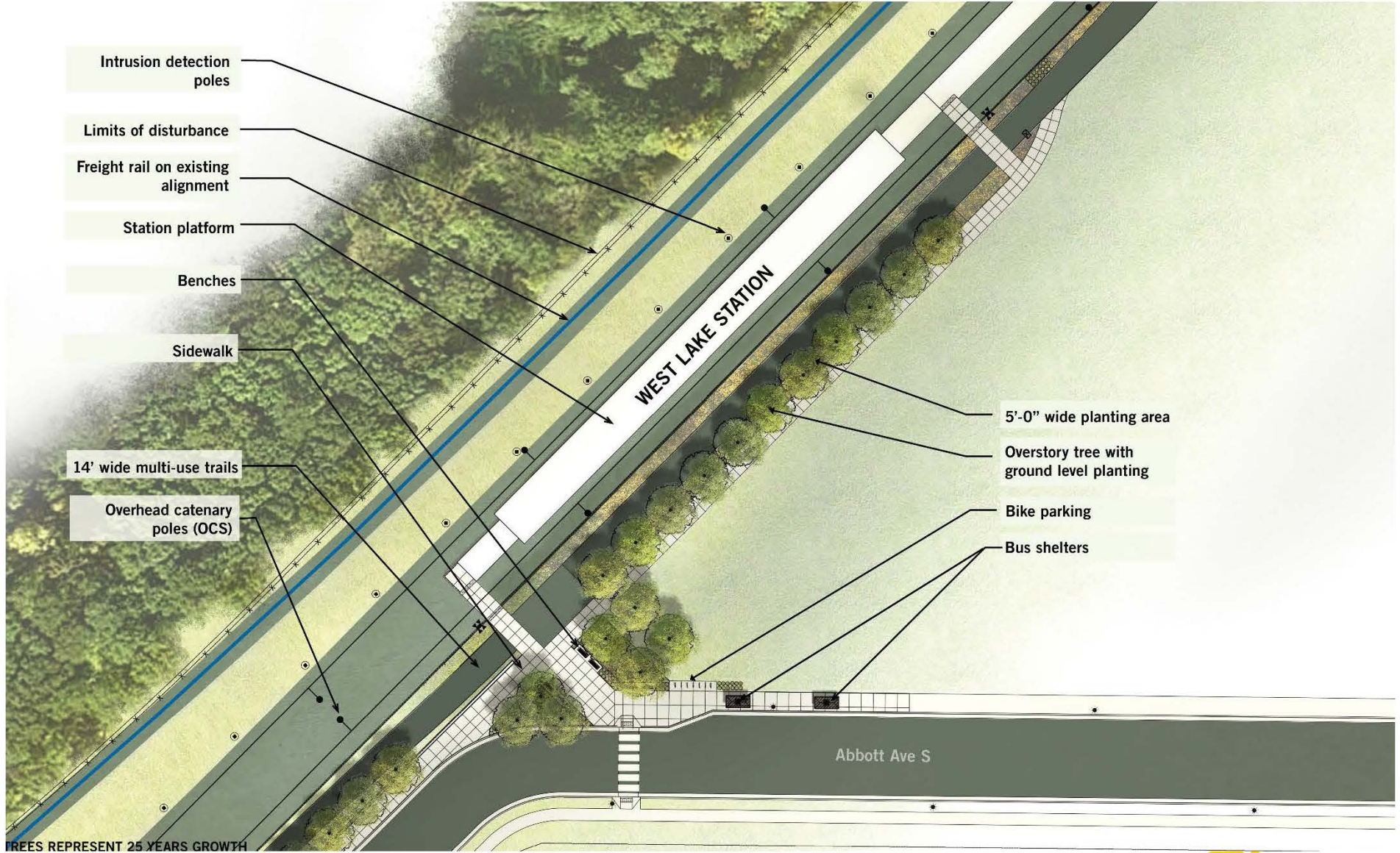
Kenilworth Corridor Final Landscape Plan



The Narrows



West Lake Station Landscape Design



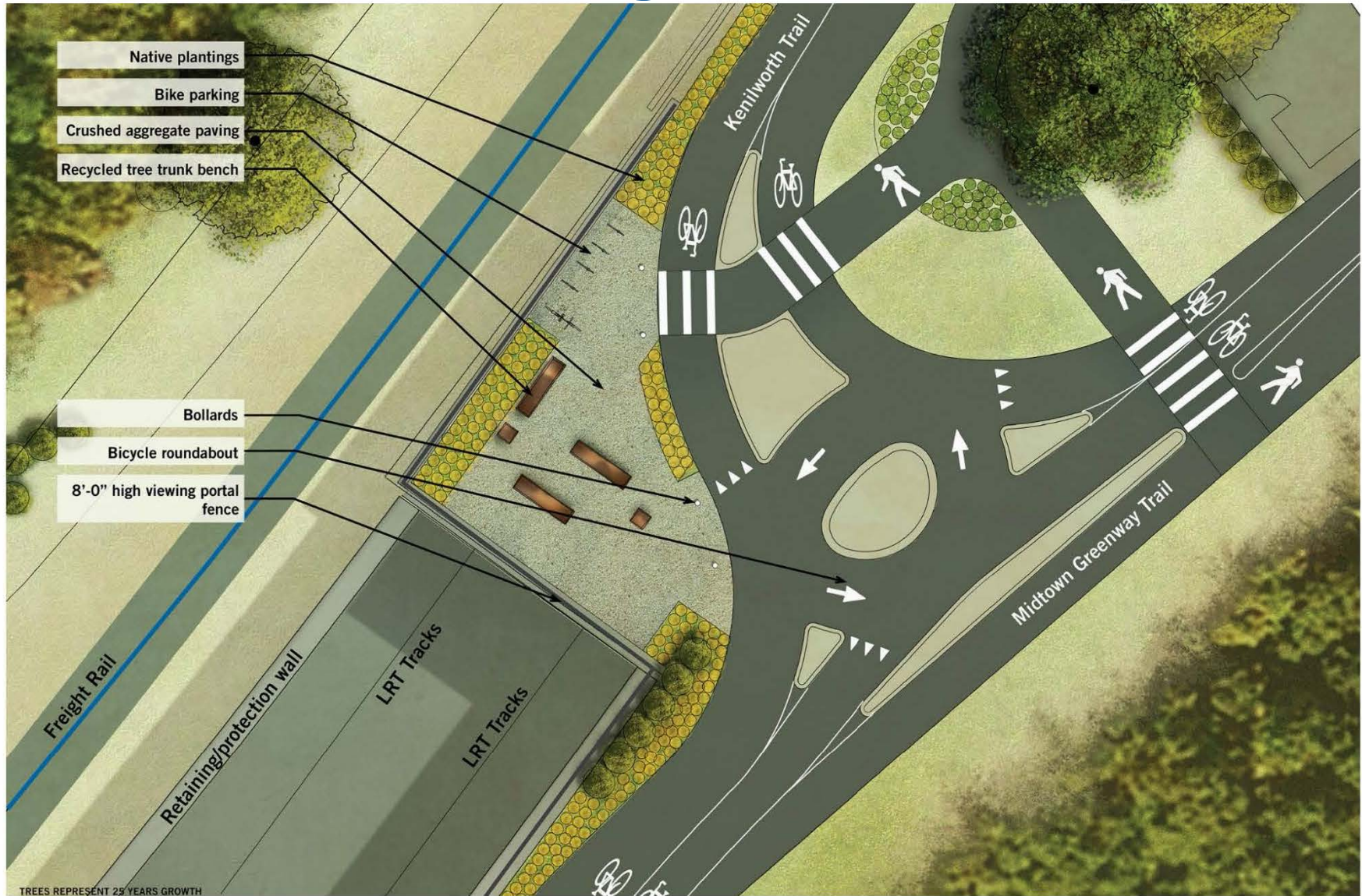
West Lake Station



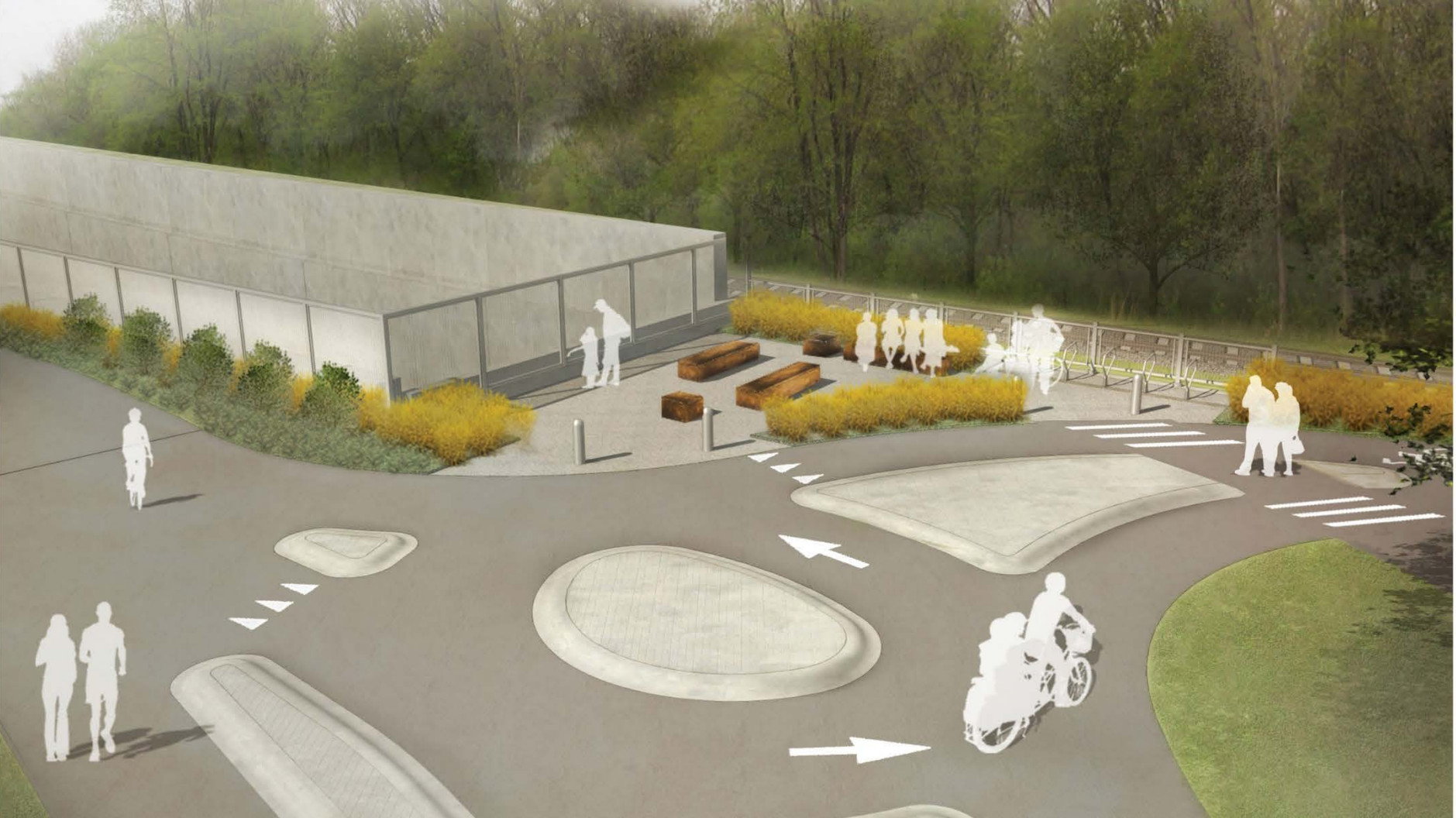
Graphic represents approximately 15 year tree growth

DRAFT - WORK IN PROCESS

South Portal Viewing Area Landscape Plan



South Portal Viewing Area: Bird's-Eye View Looking West



South Portal Viewing Area: Perspective View Looking Southwest



View Away from South Portal Looking North



TREES REPRESENT 25 YEARS GROWTH

The Meadow

MEADOW WOODED EDGE

- Flexible landscape areas
- Extensive overstory tree canopy
- Stormwater management areas to support diversity of plant and animal species

TUNNEL NORTH VIEW PORTAL

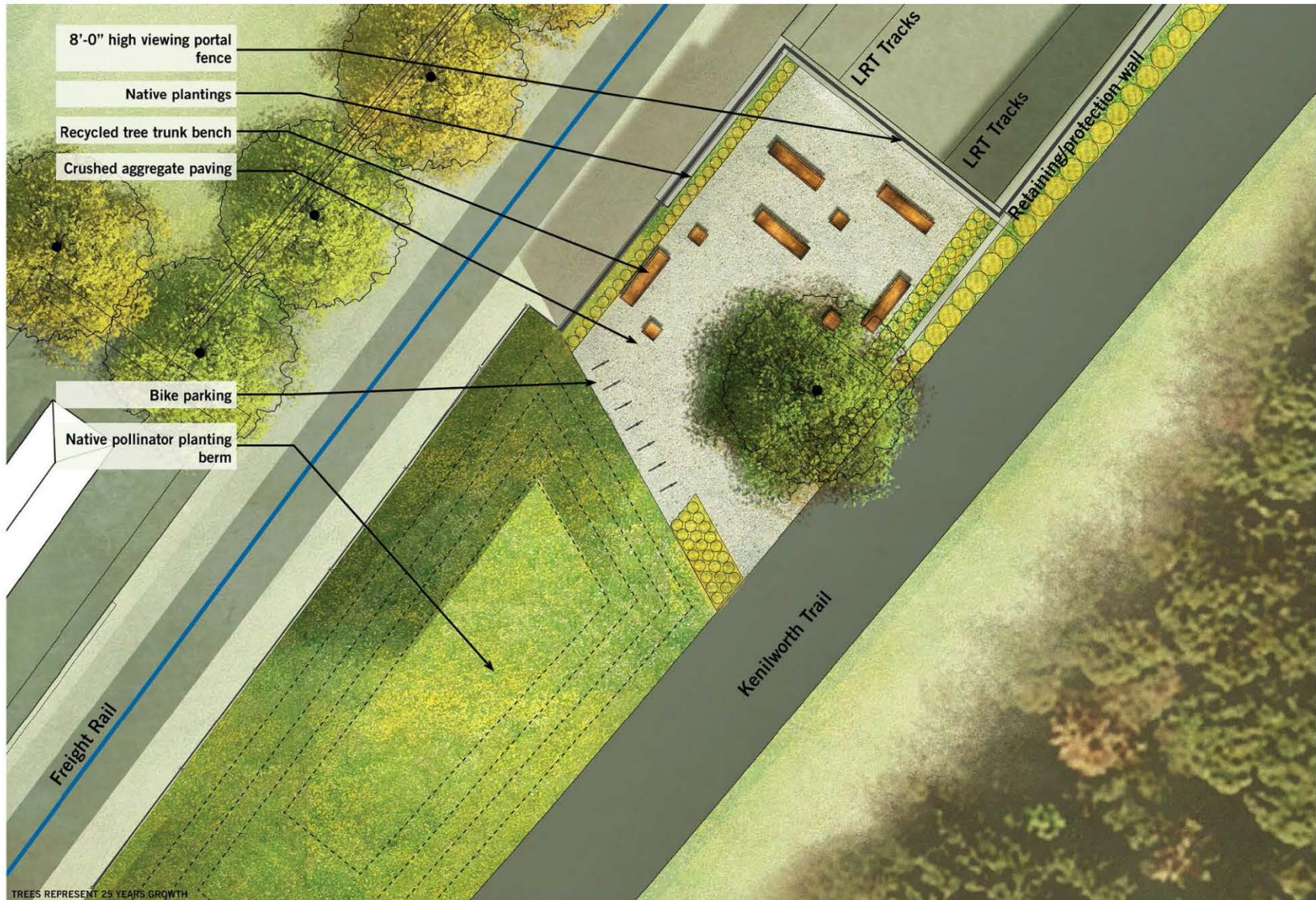
- Portal overlook with seating and bicycle parking

MEADOW LANDSCAPE

- Flowering meadow prairie landscape
- Stormwater management to interpret historic location of Cedar Lake east bay.



North Portal Viewing Area Landscape Plan



North Portal Viewing Area: Bird's-Eye View Looking Northwest



North Portal Viewing Area: Perspective View Looking North

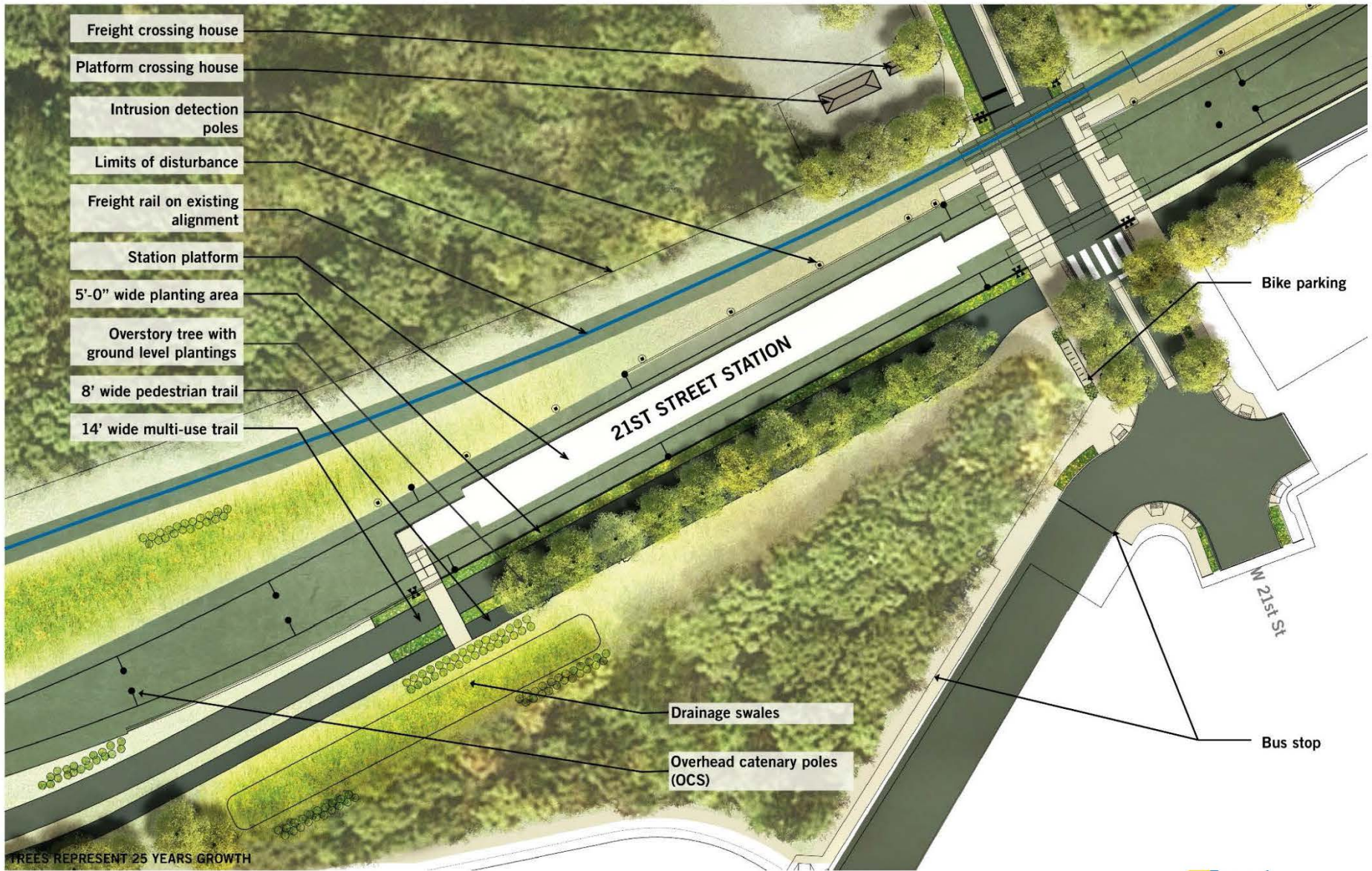


View Towards 21st Street Station



TREES REPRESENT 15 YEARS GROWTH

21st Street Station Landscape Design



21st Street Station



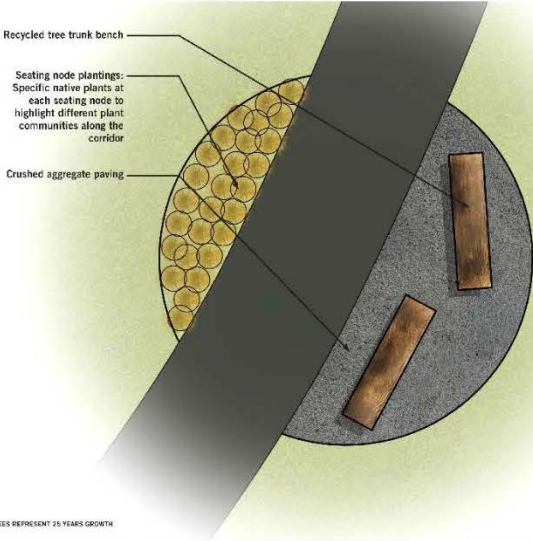
Graphic represents approximately 15 year tree growth

DRAFT - WORK IN PROCESS

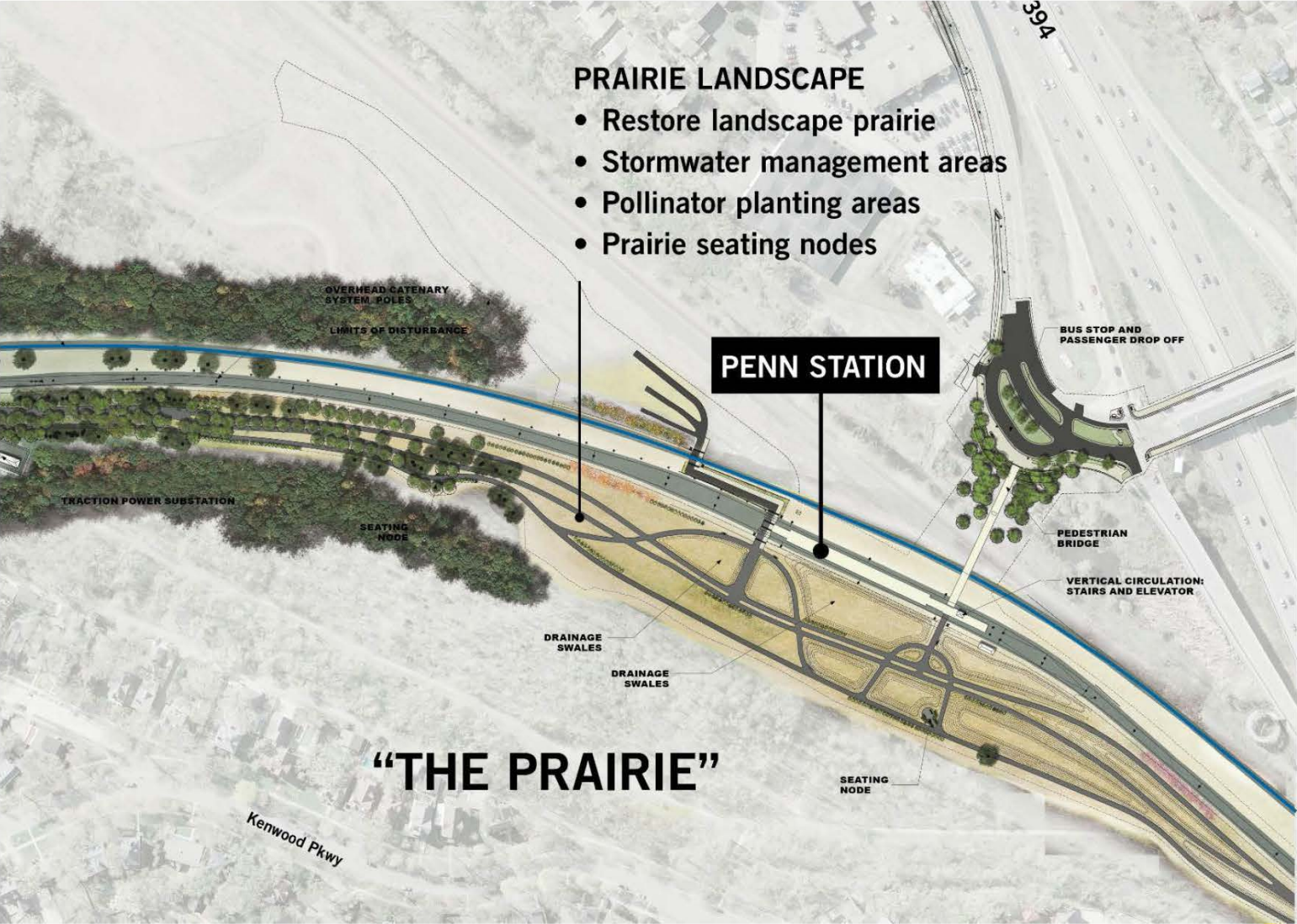
The Woods



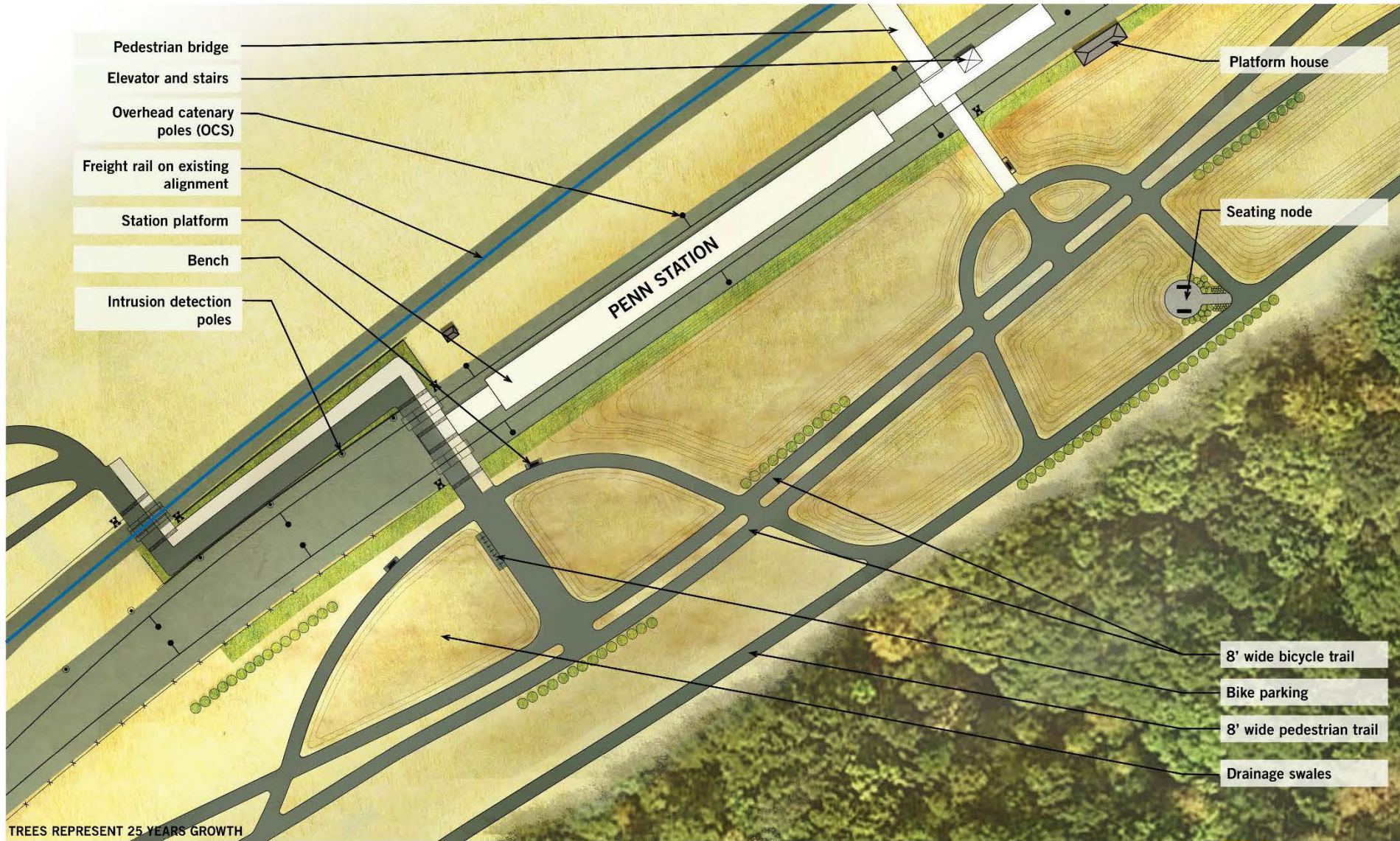
Seating Nodes



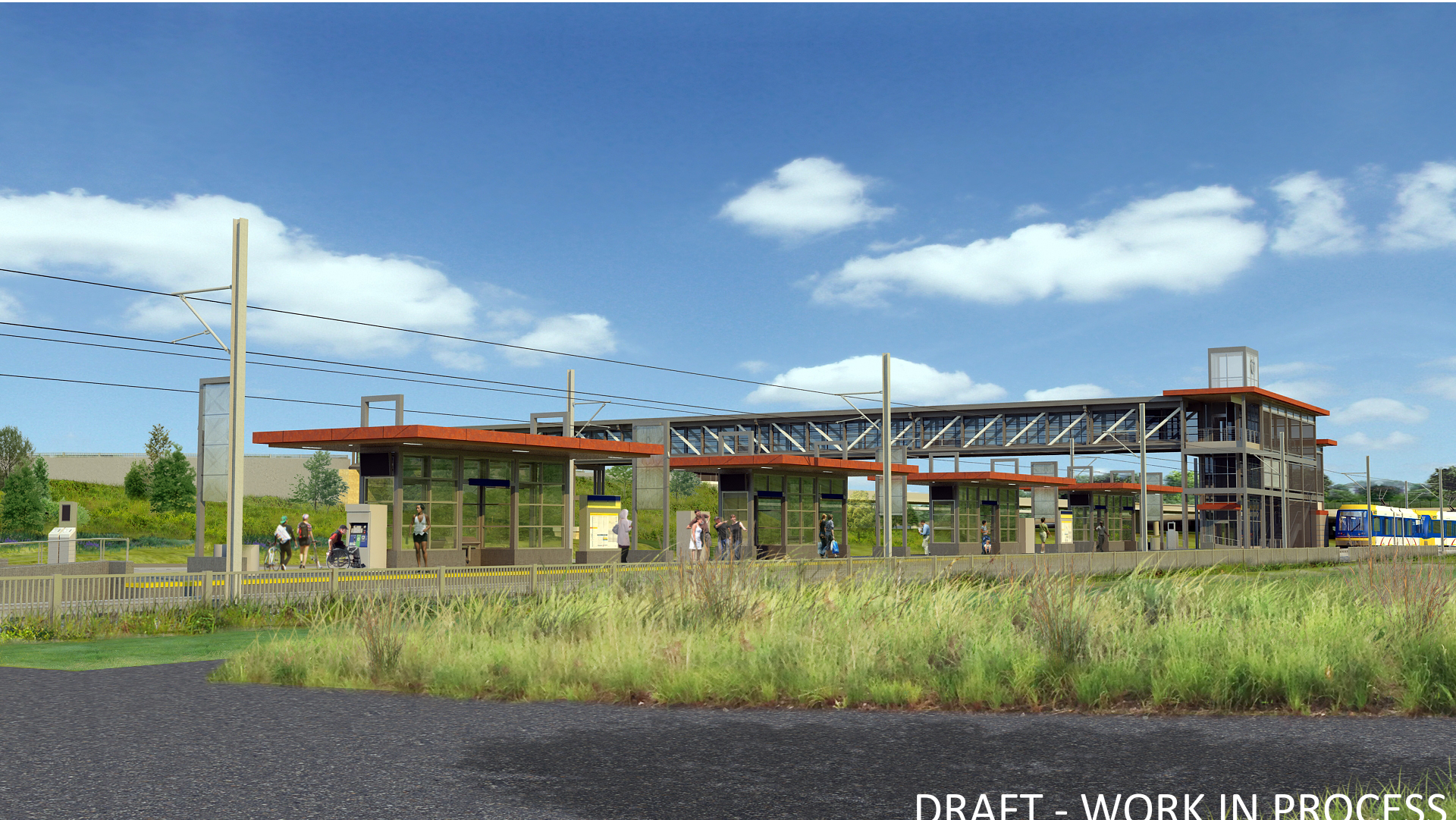
The Prairie



Penn Station Landscape Design

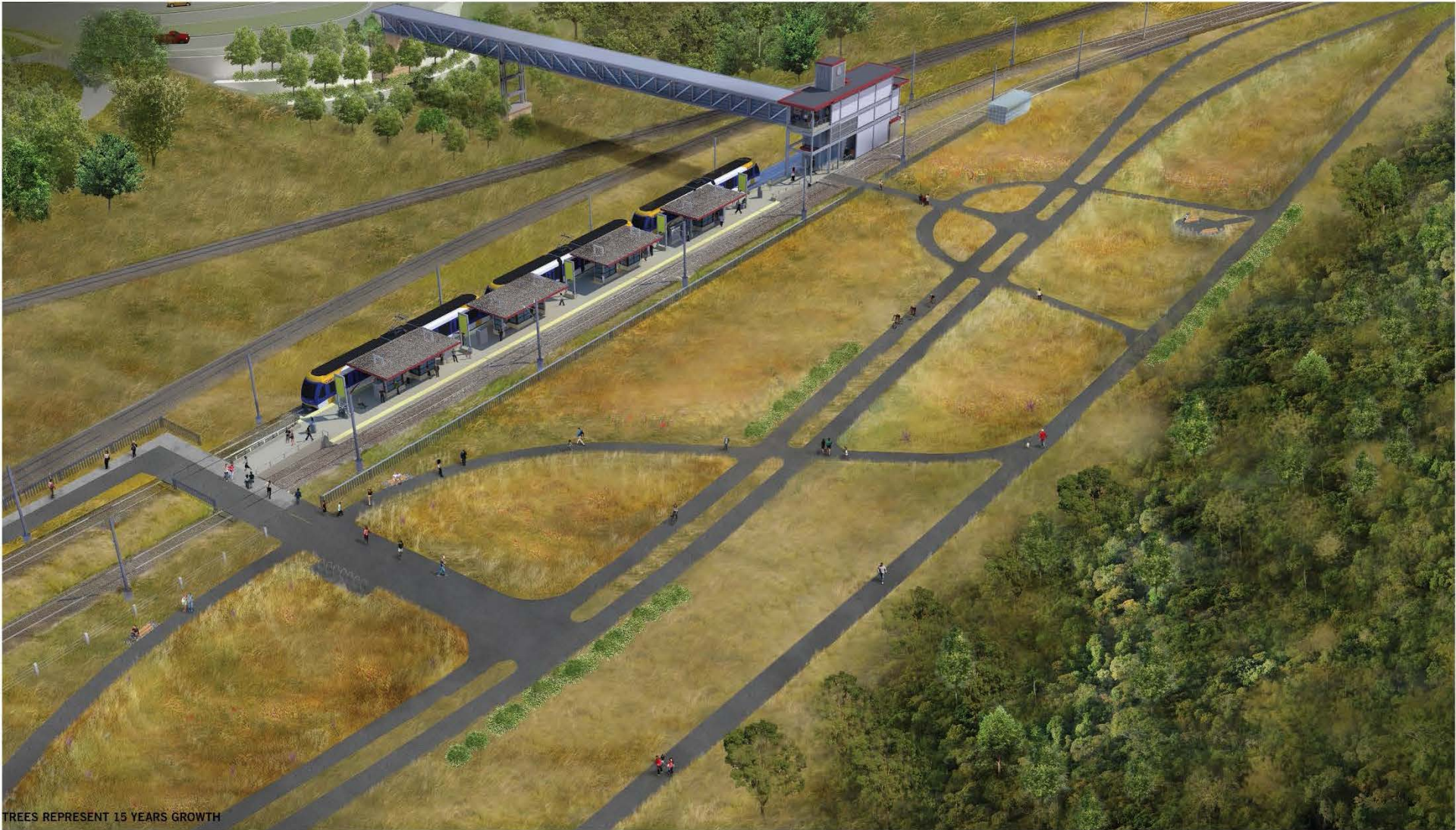


Penn Station



DRAFT - WORK IN PROCESS

View Towards Penn Station



TREES REPRESENT 15 YEARS GROWTH

Recommended Corridor Fencing

- Split rail fence along freight rail when LRT is running in the tunnel
- Wood post and cable fence between LRT and trail



Recommended Station Fencing

- Metal fence between LRT and trail at stations



Kenilworth Landscape: Budget and Costs

- Landscape budget =
 - \$1.6 M in today's construction cost
 - \$3.2 M in year of expenditure

- Preferred combined concept "Landscape Evolution" costs =
 - Approximately \$1.6 M in today's construction costs
 - Approximately \$3.2 M in year of expenditure

Kenilworth Landscape: Budget and Costs

- Landscape costs include trees, plantings, ground covers, (5) seating nodes and (2) tunnel portal overlooks
- Landscape costs do not include:
 - Enhanced pavements
 - Upgrades to walls and corridor/station fences
 - Upgrades to wayfinding or signage
 - Long-term maintenance
 - Enhancements to sub-station/ crossing house buildings

Next Steps

Anticipated Project Schedule

Element	Timeframe
Complete 90% Design (Civil)	Winter/Spring 2016
Complete 100% Design (Civil)	Spring 2016
Final Environmental Impact Statement	Spring 2016
Record of Decision	Summer 2016
Anticipated Start of Civil Construction	Fall 2016
Anticipated Start of Systems Construction	Winter 2016
Anticipated Start of OMF Construction	Spring 2017
Heavy Construction	2017-2019
Revenue Service	2020

* The environmental review of the project is ongoing and all of the project details remain subject to change throughout that process

Questions/Discussion

More Information

Online:

www.SWLRT.org

Email:

SWLRT@metrotransit.org

Twitter:

www.twitter.com/southwestlrt

