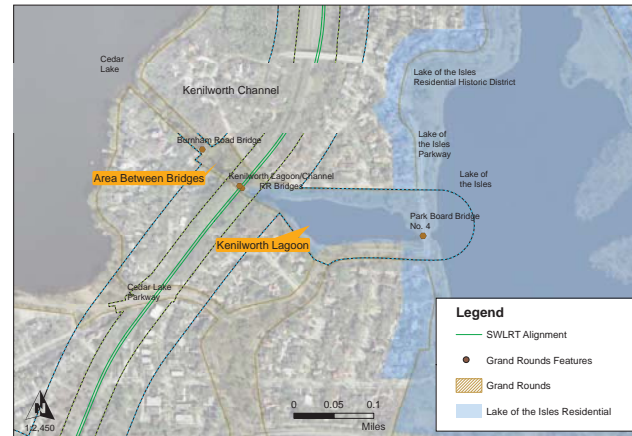


Kenilworth Lagoon as a Historic Property

JUNE 2015



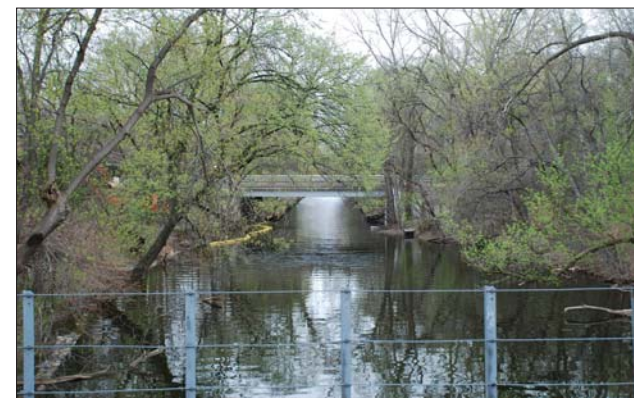
The Kenilworth Lagoon is a contributing element to the Grand Rounds Historic District.

Grand Rounds is eligible for the National Register of Historic Places under Criteria A and C in the areas of:

- Community Planning & Development
- Entertainment/Recreation
- Landscape Architecture

PRIMARY COMPONENTS

- Waterway: the Lagoon and Channel, including the shape of the waterway and its shoreline
- Grounds: the land bordering the waterway, including topography and landscape features



Kenilworth Channel between bridges



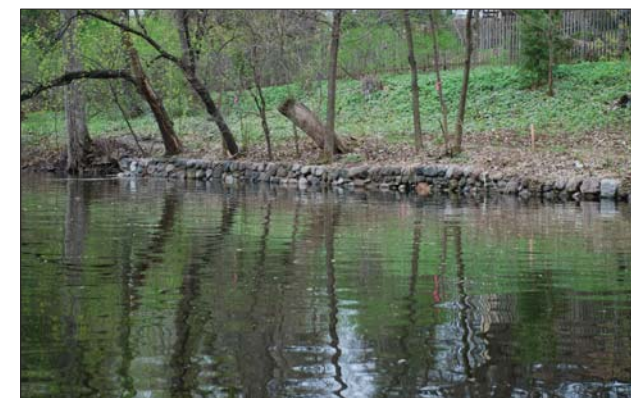
Kenilworth Lagoon

OTHER FEATURES

- Circulation Networks: Parkways, streets, trails, railroad tracks
- Vegetation: Trees, shrubs, sod
- Buildings and Structures: Bridges, pump house
- Small Scale Elements: Retaining walls, guardrails, benches, streetlights, signage



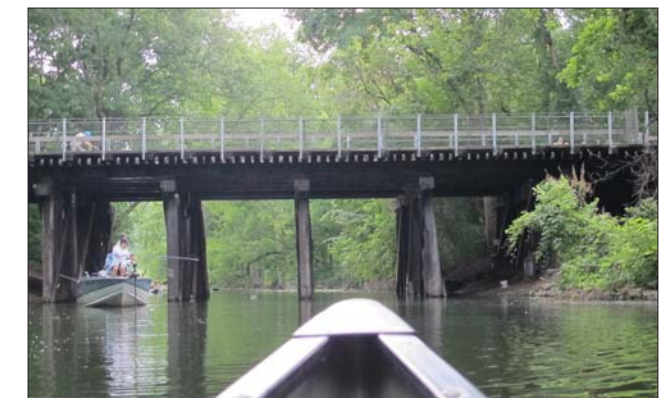
Park Board Bridge No. 4



WPA-era stone retaining wall

NON-CONTRIBUTING FEATURES

- Minneapolis & St. Louis Railway bridges (Park Board Bridge No. 5)
- Burnham Road Bridge (Park Board Bridge No. 6)



Minneapolis & St. Louis Railway bridge



Burnham Road Bridge (to be reconstructed)