

SOUTHWEST

Green Line LRT Extension



Disadvantaged Business Enterprise and Workforce Advisory Committee

May 20, 2021



EDEN PRAIRIE | MINNETONKA | EDINA | HOPKINS | ST. LOUIS PARK | MINNEAPOLIS

Today's Topics

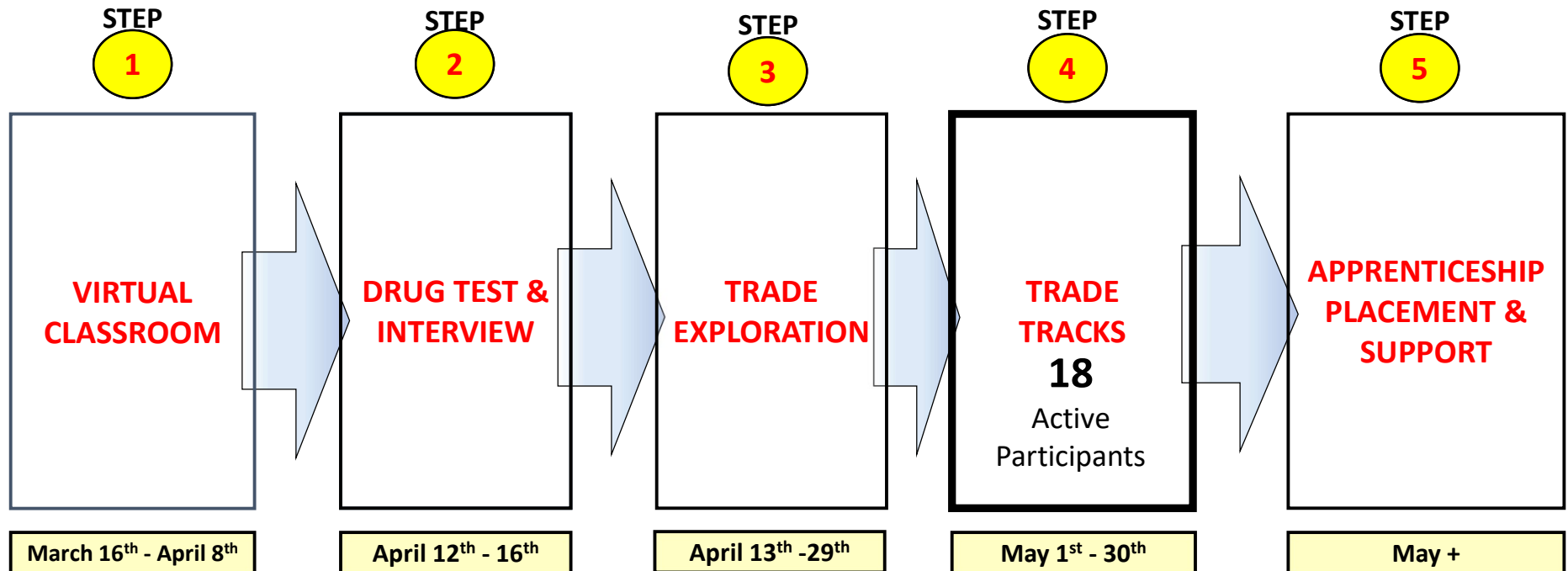
- Building Strong Communities Update
- Project Update
- DBE Reporting
- Workforce Reporting
- Subcontractor Workforce Participation Discussion



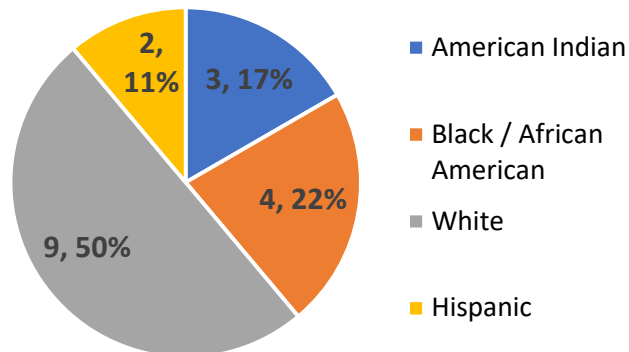


**Building Strong Communities
2021**

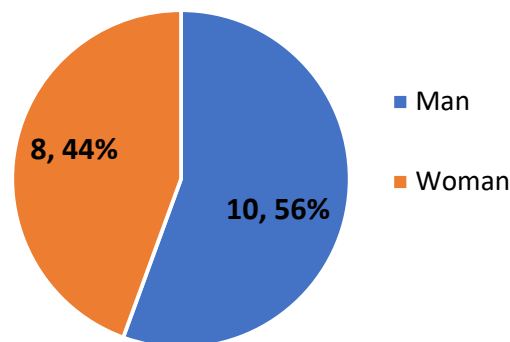
Building Strong Communities: May Update



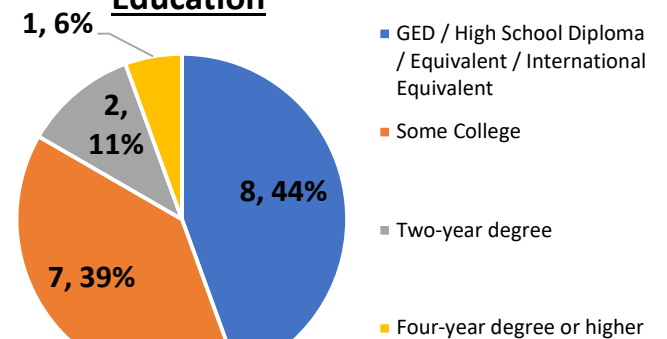
Ethnicity



Gender



Education



Building Strong Communities: May Update

BUILDING
Strong Communities

Hands On – Heat Frost Allied Workers Union

Tuesday May 11th

Local 34

Joint Apprenticeship Training Center



Building Strong Communities: May Update



Hands On – Iron Workers Union

Thursday, May 6

Local 512

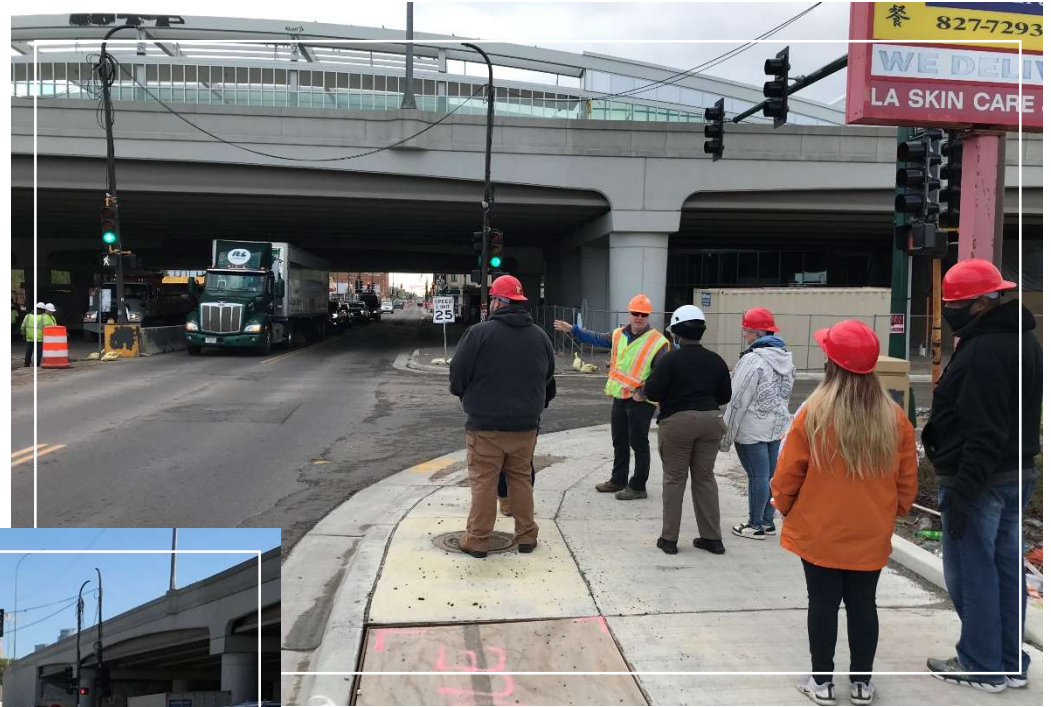
Joint Apprenticeship Training Center



Building Strong Communities: May Update



Site Tour – 35W & 94
Monday, May 10
MnDOT



Building Strong Communities: May Update



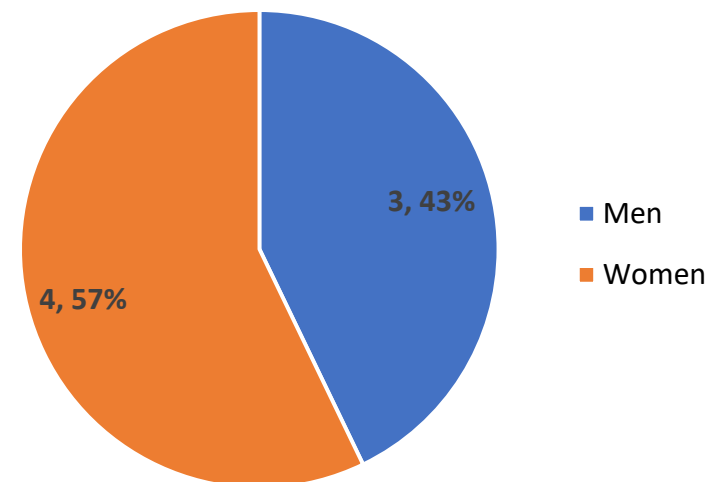
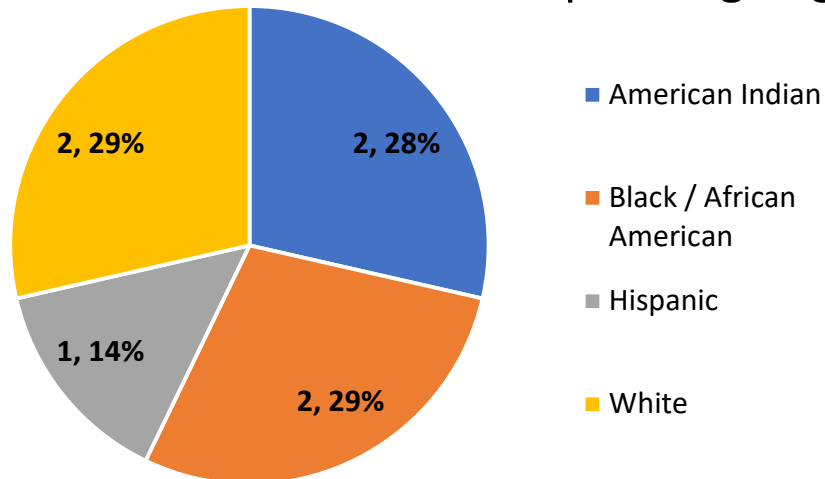
BSC 2021 Apprenticeship Placements (to date);

1 - Cement Mason

1 - Iron Workers

3 - Laborer

BSC Apprentice - Ethnicity 2 - Operating Engineer BSC Apprentice - Gender



Building Strong Communities: May Update

Apprenticeship Support Activities

1. Unstructured Check-in

- check-ins during the first months of the apprenticeship; texts, phone calls & emails

2. Structured Check-in – Survey Formatted Questions

- 30 days in apprenticeship
- 60 days in apprenticeship
- 90 days in apprenticeship
- 180 days in apprenticeship
- 1-year in apprenticeship

3. Documentation

- All Structured Check-in information collected will be documented for program purposes.

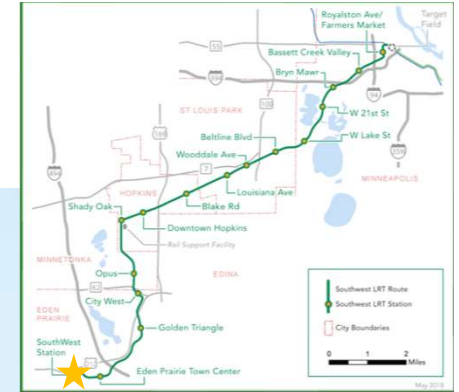
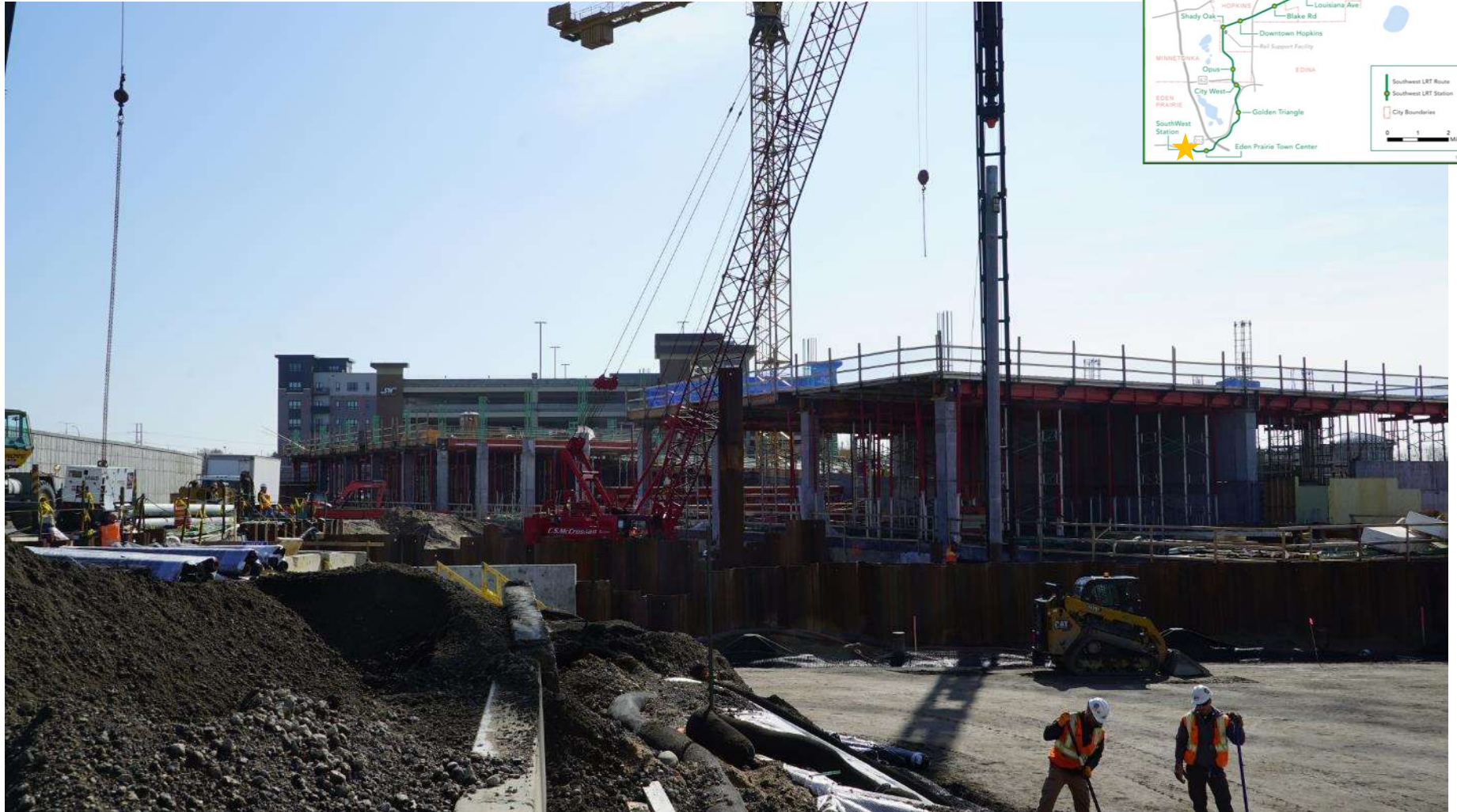
4. Issue Management

- If Apprenticeship challenges arise, Program staff will participate in developing and executing a plan to address

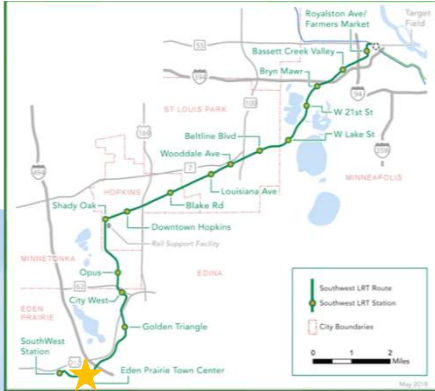


SWLRT Project Update

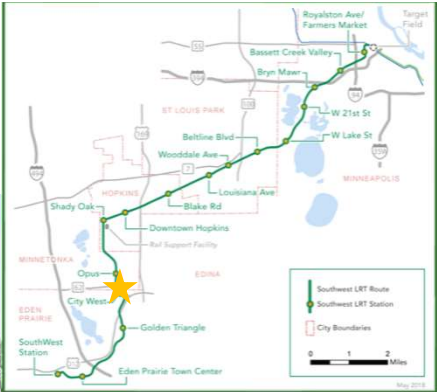
SouthWest Station, Eden Prairie



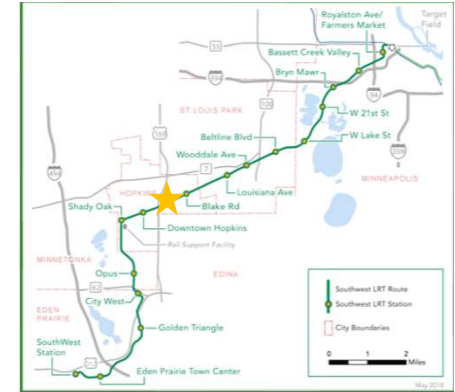
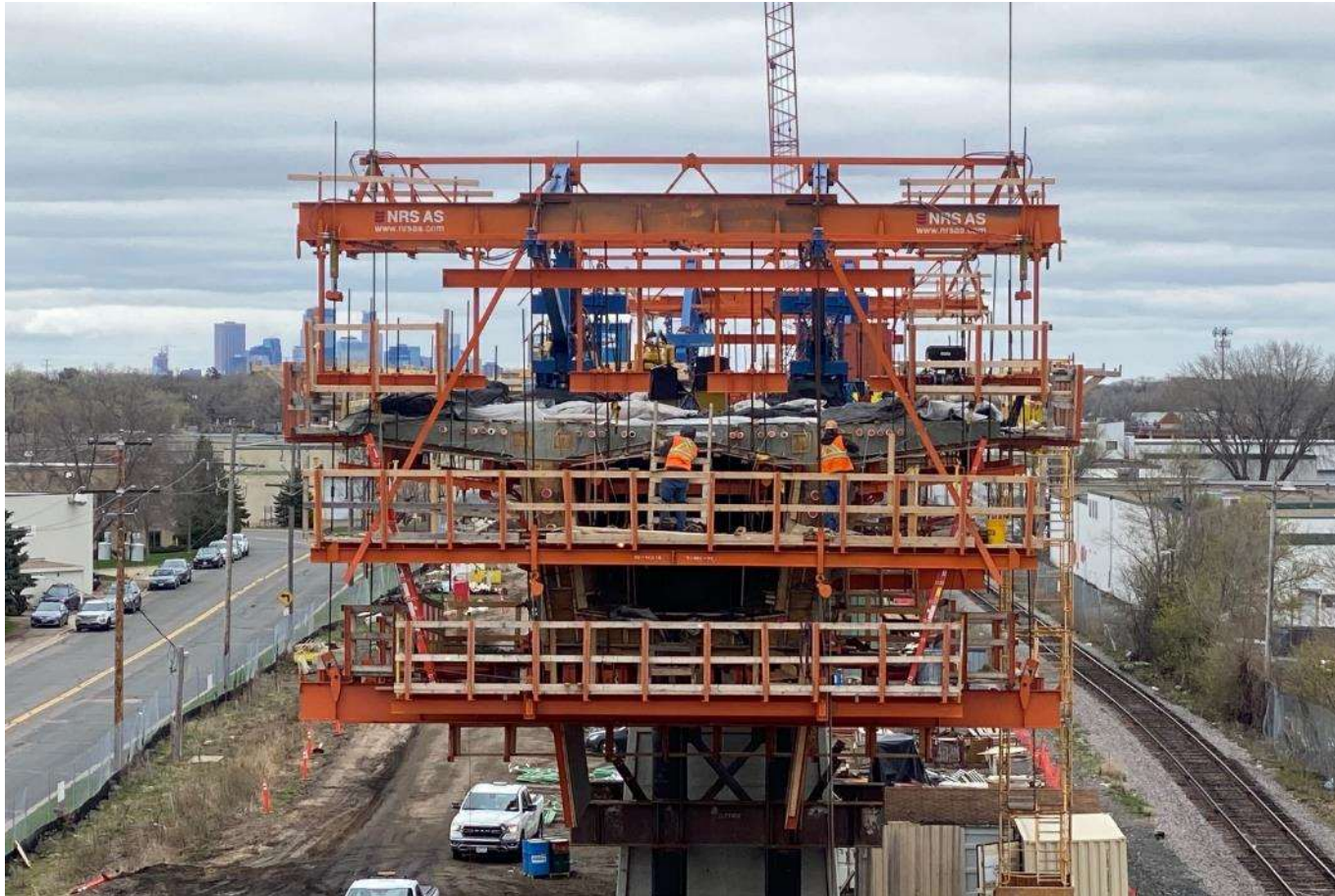
Eden Prairie Town Center Station



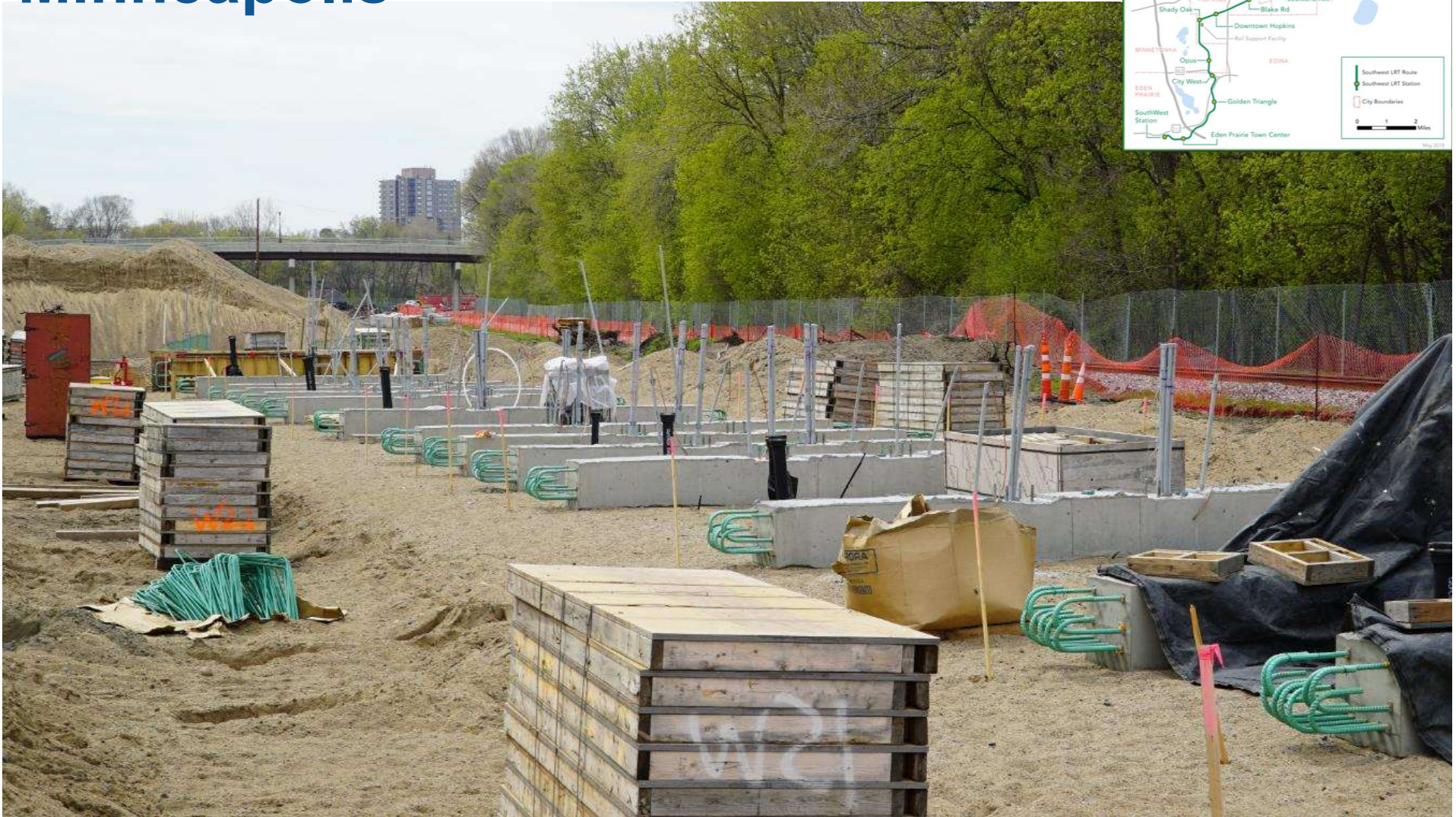
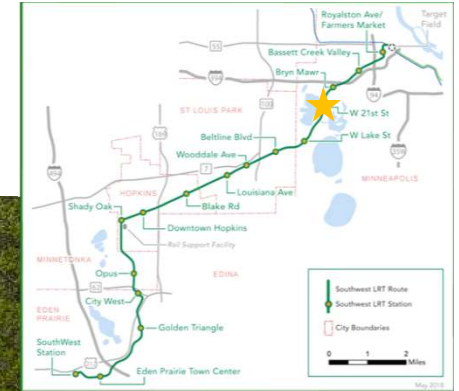
TH 62 LRT Tunnel, Minnetonka



Cantilevered Form Traveler at Excelsior Boulevard Bridge, Hopkins



West 21st Street Station, Minneapolis



Franklin OMF: North Yard Apron Sub-slabs and Track



SWLRT LRT Vehicle #301



DBE Achievement Report

DBE Achievement as of March 31, 2021

Contractor	Contract Description	Contract Amount	Contractor Billed to Date	DBE Billed to Date	DBE Date %	As of Date
LMJV 16% Goal	Civil	\$840,492,325	\$437,283,792	\$89,893,803	20.6%	3/31/21
APJV 12% Goal	Systems	\$193,819,580	\$52,463,181	\$8,437,378	16.1%	3/31/21
LS Black 15% Goal	Franklin O&M Exp.	\$39,084,536	\$19,780,039	\$3,970,729	20.1%	3/31/21
17% Goal	Closed Contracts	\$404,992	\$404,992	\$74,610	18.4%	
		Contract Amount	Billed to Date	\$ DBE to Date	% DBE to Date	
15% Goal		\$1,073,801,433	\$509,932,004	\$102,376,520	20.1%	

Lunda/CS McCrossan Joint Venture: Civil DBE Activities Update

SWLRT DBE Participation: April & May

- Civil Contract

- Am-Tec Designs
 - Blackstone
 - Big G Tech Support
 - Boys Contracting
 - CI Utilities LLC
 - E&J Steel Erectors
 - HHA
 - IMO Consulting Group
 - On Call Pavment Sweeping
 - Pete's Water & Sewer
 - Public Solutions Group
 - Safety Signs
 - Standard Contracting Inc
 - Stonebrook Fence Inc.
- Structural Steel SUPPLY ONLY
Retaining Walls
Project Offices and Support
Pipe Supply
Electrical Testing
Steel Erection
Scheduling Consultant
Surveying
Street Sweeping
Utility Work
Public Info and Site Prep.
Maintenance of Traffic
Erosion Control & Misc. Civil
Temp. & Permanent Fence

SWLRT DBE Participation: April & May

- Civil Contract

- AirFresh Industries Sanitary Facilities
- Biffs Sanitary Facilities
- Mac's Roll-Off Service Inc Dumpsters
- ZTS Project Trucking
- MBE Inc Project Trucking
- M&J Trucking Project Trucking

- Stations Contract

- Am-Tec Designs Structural Steel
- E-Con-Placer Concrete Pumping
- Biffs Sanitary Facilities
- Sun Mechanical Mechanical

DBE Participation Facts

- Owner Change Orders approved 4/15: \$44,193,823
- Current DBE Participation: 20.51%
- Over 64 DBE businesses are contracted to work and are working on the project



LMJV DBE Highlight: E&J Rebar Inc

- Scope of work: Steel Erection

- Total Contract to Date \$14,628,211
- Total Paid to Date \$4,375,434
- Estimated Completion Date August 2024

“E & J is working on its third Light Rail project and the SWLRT has been a very challenging yet rewarding project. The ongoing changes has been the biggest challenge, but the rewarding part of the project is keeping our workforce working steadily.”

Statement from E&J Rebar Inc.



Aldridge Parsons Joint Venture: Systems DBE Activities Update

Anticipated DBEs: One Month Look Ahead

- May/June
 - Gunnar: Communication work at Eden Prairie Town Center Station & Shady Oak Station Speaker Back Boxes
- July
 - TPSS Foundations: Dionne Construction (303 & 304)
 - Erosion control/silt fence
 - Bald Eagle Erectors (Meyer Sub): Form/Rebar/Pour Concrete
 - Moltron Builders: Laborers
 - Excavation, under-drain, subgrade preparation
 - MBE Inc. (Meyer Sub): Trucking
 - IMO: Pre-inspection

APJV Systems Contract DBE Update

- B&L Supply, Inc.:
 - Issued a Purchase Order for Signal Cable: \$882,984

APJV Update on Change Orders

- Owner change orders approved thru 4/1/21:
 - \$1,005,600.10
- DBE Change Order Participation:
 - Gunnar Electric: \$191,683
 - Generation Cable: \$413,311 (\$247,986: 60% material only)
 - DBE change order participation: 60%
 - DBE job to date participation: 16.1%

LS Black Constructors: Franklin O&M DBE Activities Update

LS Black Update on Change Orders

- Current contract amount thru 4/1: \$39,084,536
 - Committed DBE contracts: \$7,814,779
 - Anticipated DBE participation: 20%
- Overall billed to date thru 4/1: \$22,579,488
 - DBE billed to date thru 4/1: \$4,450,840
 - DBE achievement to date: 20%

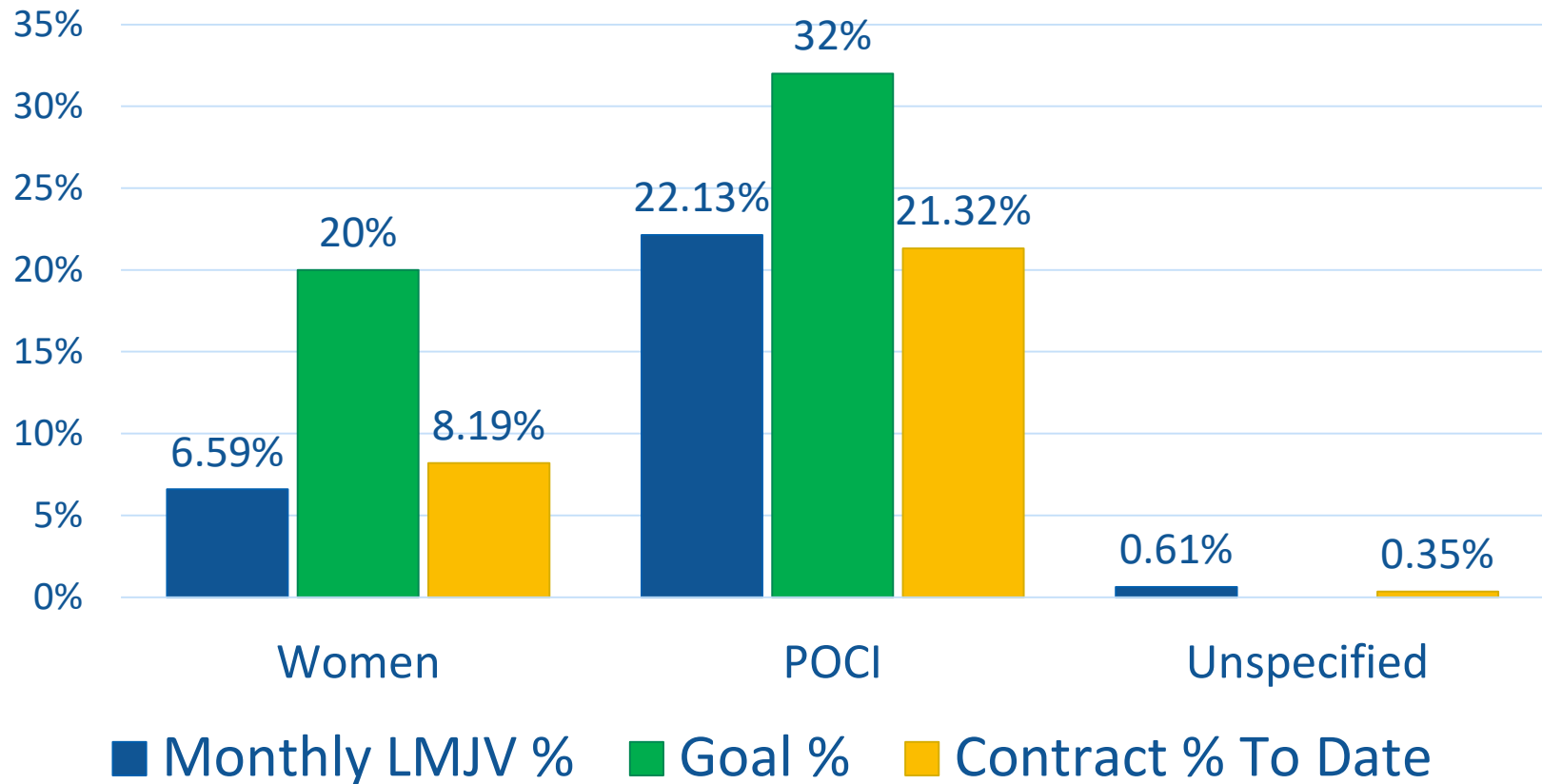
LS Black Update on DBE Activity

- Ongoing participation from GoFetsch Mechanical
- Large upcoming scope for Nakasone Painting
- Bald Eagle Erectors
- Camacho Roofing
- Always Stone & Tile
- Am-Tec Designs steel (fabrication only)

Workforce Participation Report

Civil Workforce Participation Percentage*

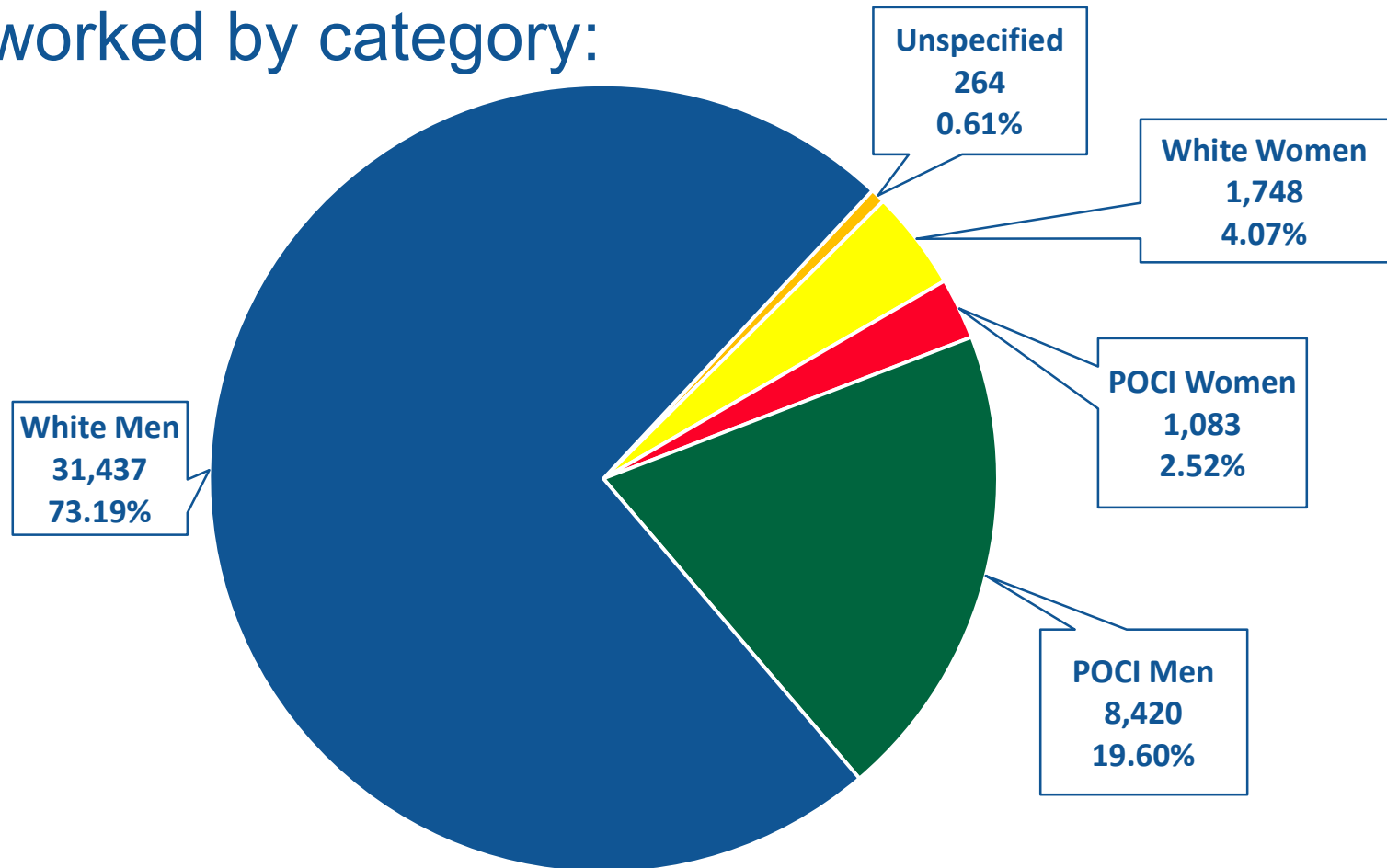
- March 2021: 42,951 hrs
- Civil Construction Total: 1,067,995 hrs



*Based on MDHR Workforce Report for March 2021
People of Color/Indigenous (POCI)

Civil Workforce Participation*

- March 2021: 42,951 hrs
- Hours worked by category:



*Based on MDHR Workforce Report for March 2021

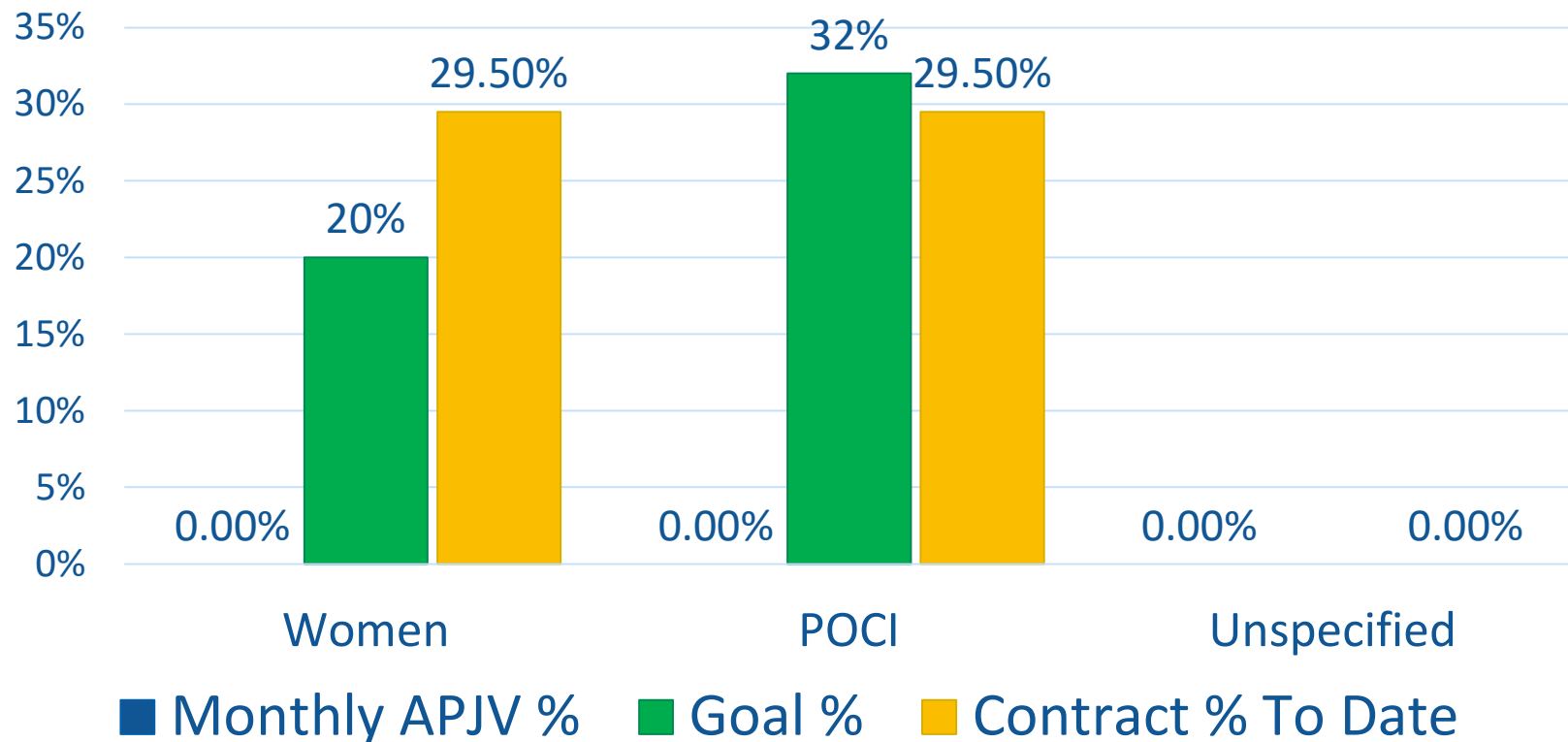
Civil Workforce Participation: Trucking

- Trucking participation on Project* being counted:
 - MBE: 19,244 hours
 - ZTS: 3,581 hours
 - Rock-On Trucks, Inc: 683 hours

* Based On Project To Date

Systems Workforce Participation Percentage*

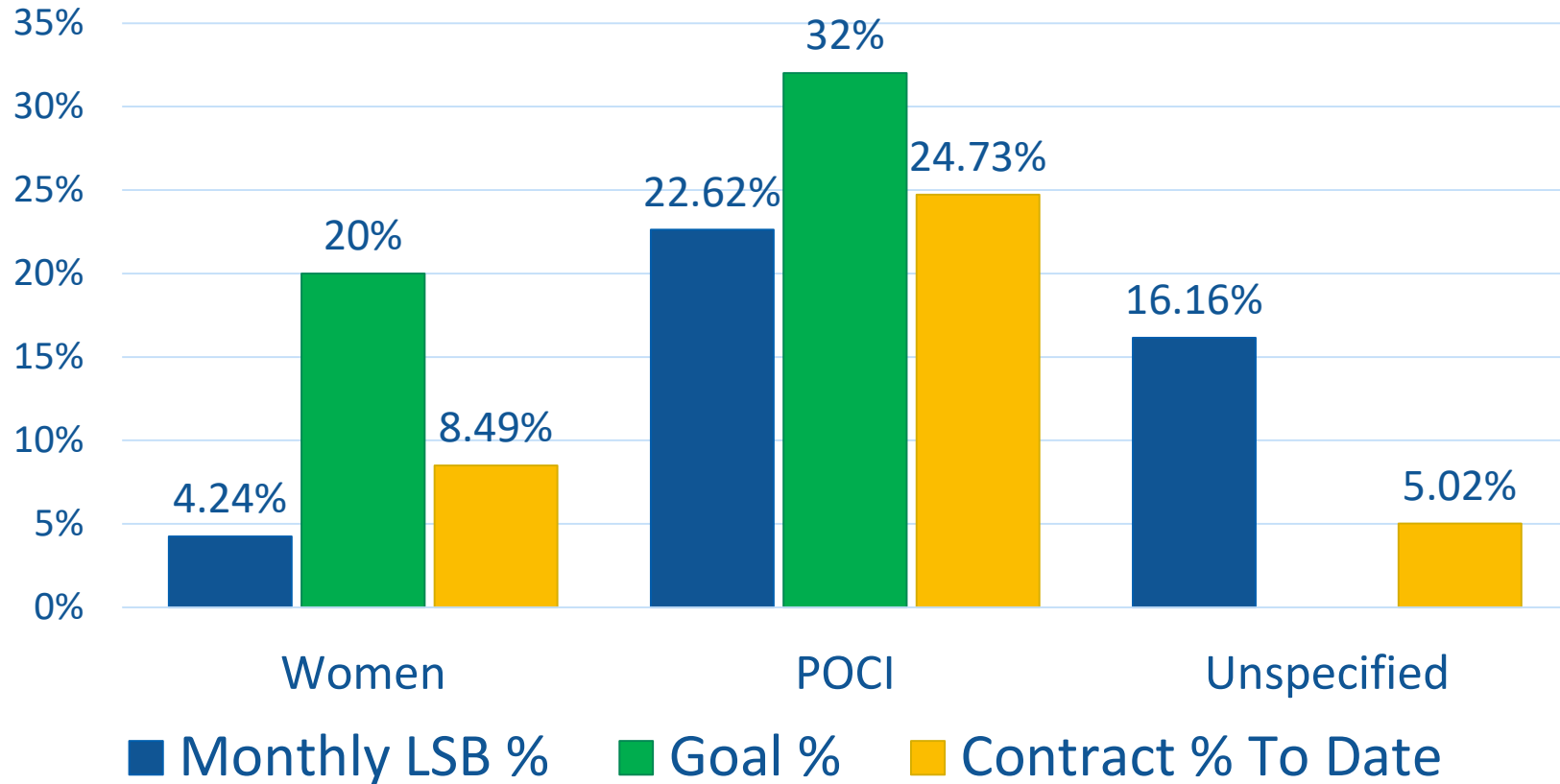
- March 2021: 0 hrs
- Systems Construction Total: 261 hrs



*Based on MDHR Workforce Report for March 2021
People of Color/Indigenous (POCI)

Franklin O&M Workforce Participation Percentage*

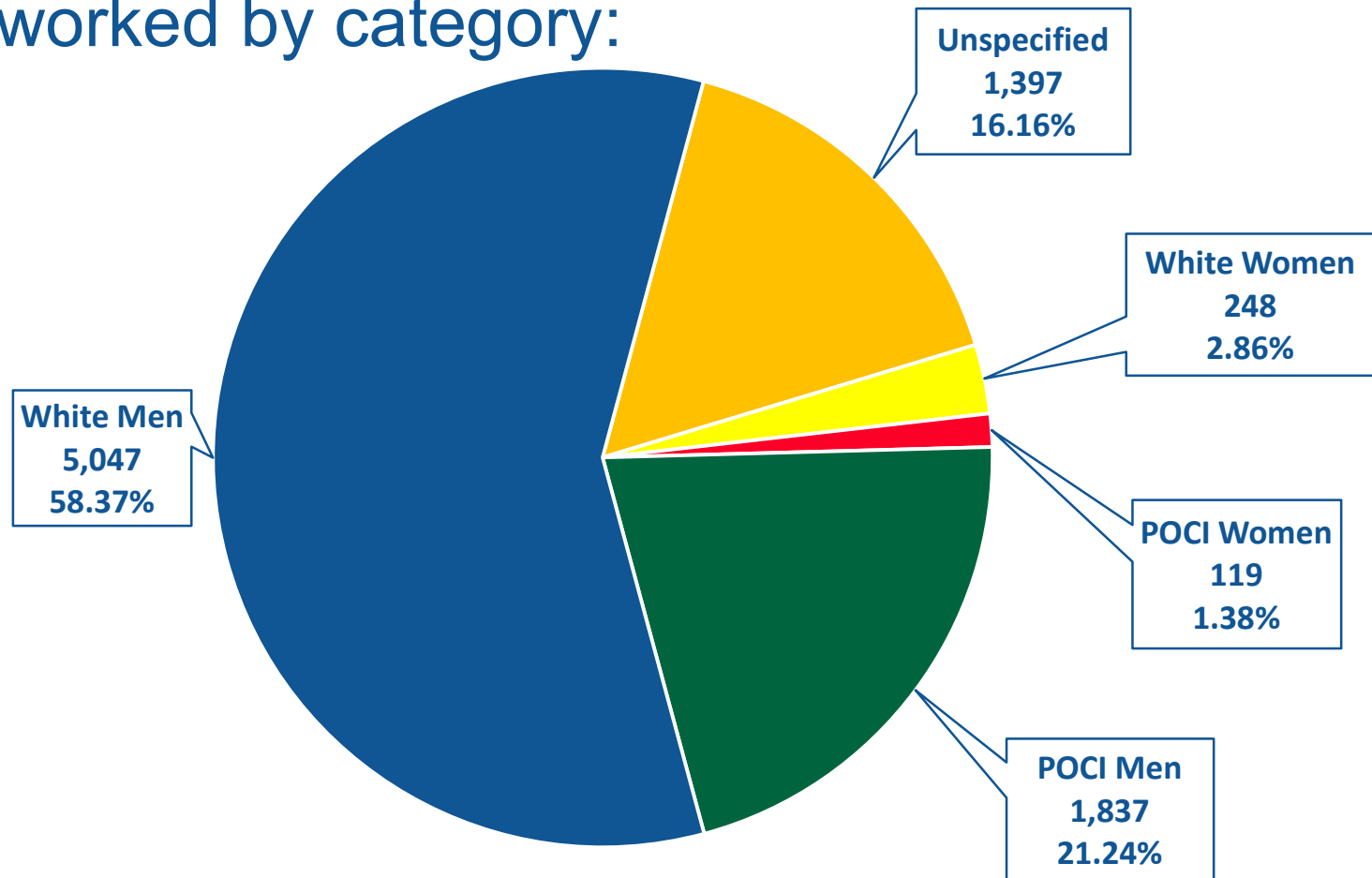
- March 2021: 8,647 hrs
- Franklin O&M Construction Total: 46,628 hrs



*Based on MDHR Workforce Report for March 2021
People of Color/Indigenous (POCI)

Franklin O&M Workforce Participation*

- March: 8,647 hrs
- Hours worked by category:



*Based on MDHR Workforce Report for March 2021

Lunda/CS McCrossan Joint Venture: Civil Workforce Activities Update

LMJV Workforce Activities: April 2021

- Monthly GFE meeting with MDHR & Met Council
- Monthly Subcontractor Workforce Participation Meeting
- Assisted with Building Strong Communities next stage interviews
- Continual update meetings with LMJV representatives & Lunda Field Operations on upcoming hiring needs
- Attended virtual career fair with TC Urban League

LMJV Workforce Activities: April 2021

- Construction Trades Outreach planning involving CBO introductory meeting
- Meeting with Lunda Field Opps regarding the implementation of a mentoring/next stage program between Building Strong Communities & Lunda
- Interviewed Building Strong Communities candidates for Lunda's Yard to Field mentoring positions – One candidate for sure has been offered a position
- Continued training of Lunda staff regarding Good Faith Efforts & Goals

LMJV Upcoming Stand Out Workforce Activities

- May 21: SWLRT Project Tour for Building Strong Communities
- May or June: Union Round Table with the SWLRT Contractor Teams
- June 9: MN Construction Crews Career Fair

Total New Hires/Transfers for LMJV: April 2021

- White Male: 7
 - White Female: 0
 - POCI Male: 0
 - POCI Female: 0
-
- LMJV is currently working on recruitment efforts for EXPERIENCED Cement Finishers for the project

Aldridge Parsons Joint Venture: Systems Workforce Activities Update

Systems Contract Workforce

- Plan to meet the workforce goal:
 - APJV Craft Labor will not begin until July 2021
 - Scheduled and participated in a meeting introducing Helmets to Hardhats with Local 160 April 28
 - Meeting included Justin Rost (H2H MN Director) and Andy Kieffer (Membership Development Coordinator of IBEW Local 160)
 - Participated in zoom meeting with the 3 SWLRT primes and subcontractors introducing local CBO's: May 12
 - Zoom meeting scheduled with Building Strong Communities Cohort: May 20
 - APJV ACE Intern started work mid-June (APJV Office in Eden Prairie)

LS Black Constructors: Franklin O&M Workforce Activities Update

Franklin O&M Contract Workforce Activities

- Scheduled monthly GFE meetings with MDHR
- Met with Christa Seaburg about outreach opportunities as well as scheduled some presentations with CBO's and will invite subs
- Reminder emails to trade partner teams about participation and plans to increase workforce as necessary
- Added new Compliance Officer within LS Black that is working through better access to LCP and workforce reporting

Franklin O&M Contract Workforce Activities

- Passed along the 4 Organizations for workforce resources to the Franklin O&M subcontractor teams
- Passed along the invitation to the MN Construction Crew Employer Registration Virtual Career Fair to the subcontractor teams

Subcontractor Workforce Participation Discussion

Panelists

- Standard Contracting
 - Becky Seidenkranz, President
- RailWorks/DELTA Joint venture
 - Cameron Day, Project engineer
- Minger Construction
 - Bill Traxler, EEO Officer and Controller
- Pete's Water & Sewer
 - Tony Diehl, Estimator and Project Manager
- E&J Rebar
 - Liz Miskavige, President and CEO
- Egan
 - Steve Nelson, Senior Project Manager

Closing

- Next Meeting Date: June 17, 2021
 - Agenda topics
 - Actions items for the next meeting
 - Adjourn

Stay Updated!

Online: SWLRT.ORG

Twitter: [@SouthwestLRT](https://twitter.com/SouthwestLRT)

Facebook: [@MetropolitanCouncil](https://www.facebook.com/MetropolitanCouncil)

Instagram: [@southwest_lrt](https://www.instagram.com/southwest_lrt)

