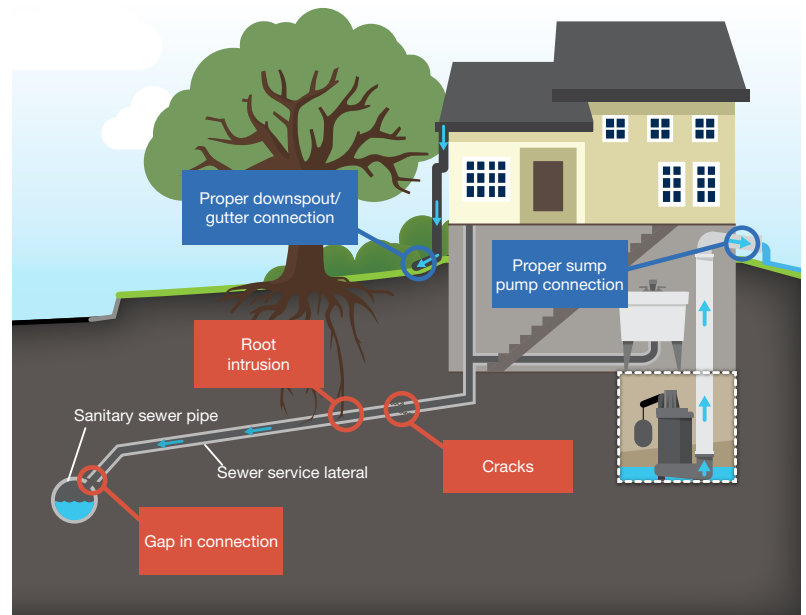


CLEAR WATER DOWN THE DRAIN: Small Leaks Make a Big Impact

A MILLION SOURCES ADD UP

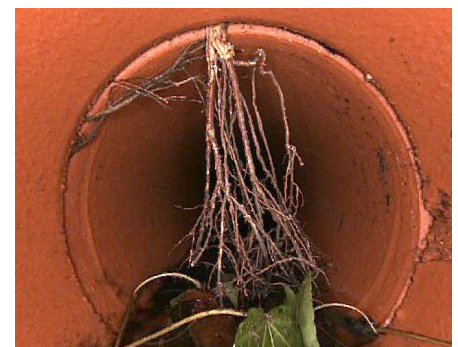
Up to 80% of Inflow and Infiltration (I/I) is from sources on private property.

- Roughly 1 million properties connect to the regional system through over 7,500 miles of sewer service laterals. Many of these pipes are over 50 years old.
- Service laterals account for over half of the wastewater pipes in the region, but are not part of most public utility inspection and repair programs.
- One sump pump can discharge 7,200 gallons per day – equivalent to 40 homes of typical water use – when connected to the wastewater system.



STOPPING I/I AT THE SOURCE

- Protects public and environmental health by preventing sewage overflows to basements and waterways.
- Allows our economy to grow and prosper without the cost of building larger infrastructure.
- Saves money by reducing the amount of water that needs to be transported and treated.



EVERYONE PLAYS A ROLE



- Check for proper discharge outside the home for sump pumps, foundation drains, and rain leaders.
- Have a plumber inspect the service lateral for root intrusion, cracks, and other defects.
- Get the repairs done. Some cities offer financial assistance for property owners.