



What is SAC?

SAC is an easier way to say Sewer Availability Charge.

The Metropolitan Council charges this one-time fee when a residence or business connects to the regional wastewater (sewer) system for the first time. The Council may also charge SAC when a business grows or changes the use of its space, which may create more potential demand on the system.

The Council charges SAC to local governments, who pass it on to business or property owners. Some local governments also charge an additional fee.

You will pay any SAC owed to your local government.



Why do I have to pay SAC?

Wastewater pipes and treatment plants are expensive. We borrow money to build them large enough to serve current AND future customers. SAC helps pay off the debt.

How does the Council determine the SAC I will pay?

SAC is charged in units.

One single-family home = 1 SAC unit = \$2,485 (2024)



Non-residential properties require a “determination” (calculation) of the amount of maximum potential wastewater capacity needed for the site. Depending on your business, you could pay more than one SAC unit. For example, a restaurant will pay 1 SAC for every 300 gross square feet.



SAC is determined based on the maximum potential wastewater flow created by the activities at the location (food preparation, dishwashing, floor cleaning, manufacturing, restroom use, etc.)

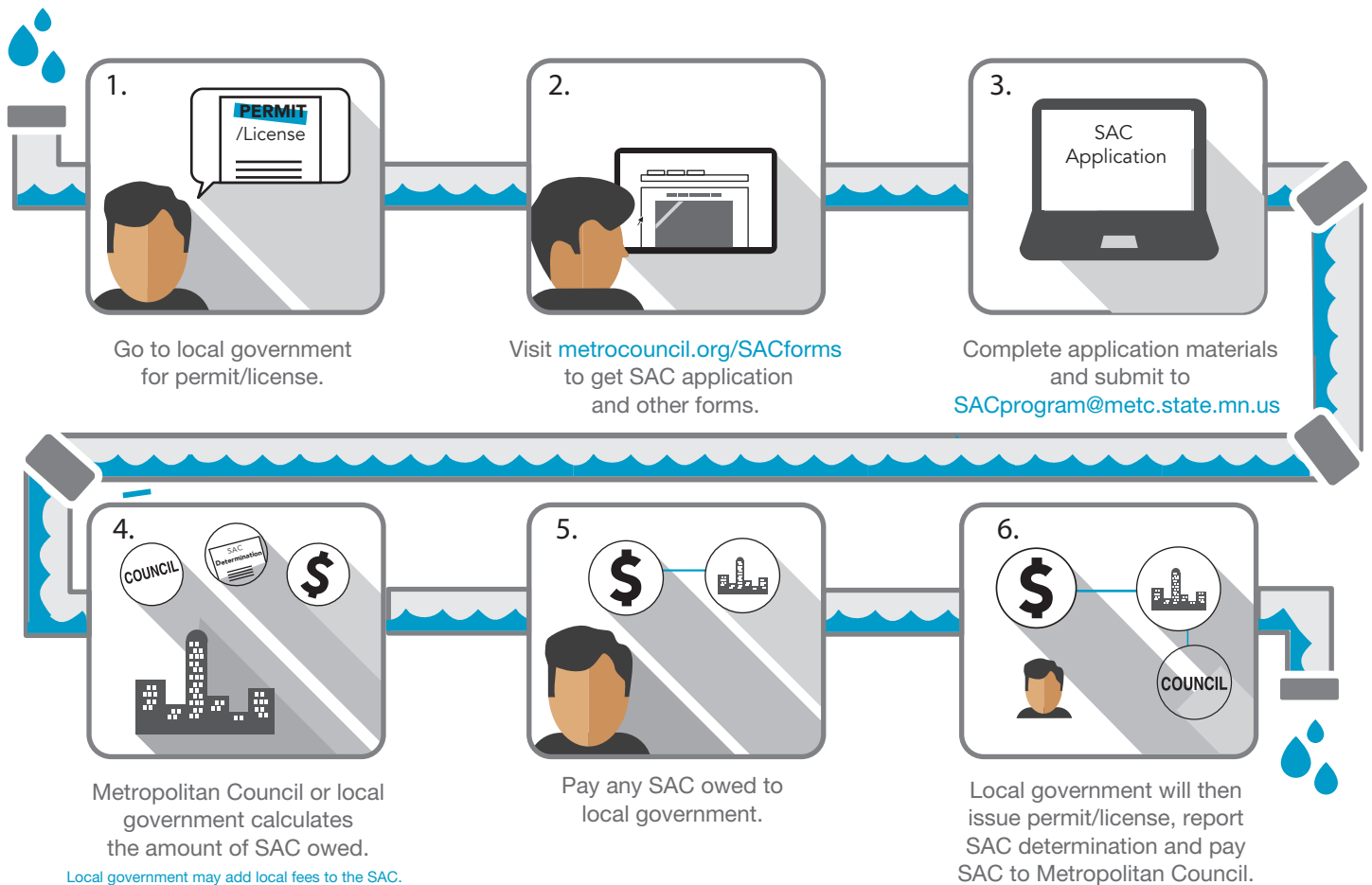


Let’s say you buy or open a business that is similar in kind and size to what existed in the same space before. If SAC was paid, you may not be charged additional SAC. Before signing a lease, contact the Council to see if there are SAC credits on the site and how to submit for a determination.

Visit metro council.org/SACmanual for guidance on how much SAC you might pay.

Did you KNOW?

How do I submit for a SAC determination?



Metropolitan Council staff will contact you within one business day after receiving your application materials to confirm whether the materials are complete or not. The Council can usually complete a determination in two to three weeks once it receives all the necessary forms and documents. **You pay any SAC owed to your local government, usually as part of a permit or business license.**

Are payment options available?

If you cannot afford to pay your SAC fee to your local government:

- You may be able to get a small business loan to spread out the cost of SAC and other local government fees. Check with your local bank or lending agent.
- Your local government may also be able to delay a portion of your SAC fee. Ask your local government if they participate in the SAC Deferral Program.

Questions?

Email SACprogram@metc.state.mn.us or call 651-602-1770 to speak with a SAC representative.