

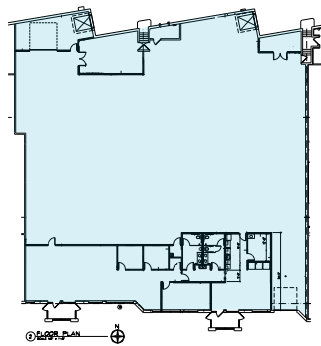


What is industrial SAC?

“Industrial” has a special meaning for Sewer Availability Charge (SAC) purposes. Many businesses commonly referred to as “industrial” are considered commercial properties for SAC purposes. For SAC, an industrial property is any property that is discharging industrial wastewater either directly or indirectly to the Metropolitan Disposal System.

Industrial wastewater, also known as process discharge, is any solid, liquid, or gaseous waste, excluding domestic waste, resulting from any industrial, manufacturing, or business activity, or from the development, recovery, or processing of a natural resource.

Metropolitan Council Environmental Services (MCES) will make final determinations of SAC for industrial properties in our service area. Industries that are permitted through our industrial waste department must contact MCES whenever a determination is needed. Communities should inform MCES of any substantial wastewater-producing industries for permitting evaluation, including municipal water treatment facilities.



Commercial SAC
Size & Type of Facility

plus



Industrial SAC
Maximum Discharge

How industrial SAC works

Industrial businesses are required to pay a one-time commercial SAC, plus up to three additional SAC units to cover their potential maximum process discharge. MCES uses the combination of commercial SAC plus the SAC assessed for the process discharge to establish an assigned SAC baseline for permitted industrial businesses. The SAC baseline is used to evaluate increased use of the Metropolitan Disposal System and to recover potential Industrial Capacity Charges (ICC) for the increased use each reporting period - either quarterly, semi-annually, or annually.

ICC is a fee charged directly to permitted industrial users when they use more capacity in the Metropolitan Disposal System than their permitted SAC baseline threshold. Industrial users pay this fee directly to MCES. ICC will be assessed for each 1,000 gallons of discharge above the threshold.



The 2022 ICC standard rate is \$2.21 per 1,000 gallons of discharge over the total SAC baseline threshold (commercial and process discharge combined). For Rural Centers, the ICC rate is higher to account for their SAC increment. East Bethel's ICC rate is \$2.83 per 1,000 gallons over SAC baseline, and Elko New Market's ICC rate is \$4.17 per 1,000 gallons over SAC baseline. For more information on ICC assessment and payment options, please refer to our website: <https://metro council.org/IndustrialSAC/ICCAssessment>

One way to look at the ICC is that it gives permitted industries a choice to rent their needed capacity instead of owning it. Depending on the variability of flow, it may make sense to purchase SAC units instead of continuing to rent; purchasing SAC permanently increases an industry's SAC baseline, which decreases or eliminates future ICC payments. ICC payments do not increase the SAC baseline.



Ongoing Charge

or



Up-front Industrial Charge

In lieu of the ongoing charge, the business may buy the industrial SAC units outright at any time, from the local jurisdiction or tribal office, to lower the ongoing ICC costs.

Check with the local jurisdiction or tribal office about additional sewer and water charges.

How ICC benefits industrial customers

- ICC can reduce the up-front costs while the business gets established.
- The ongoing costs will better match the business cycle—when business is good and the process flows are greater, the costs will rise accordingly. In a weaker business cycle when the flows are lower, the costs will be lower.
- The permit renewal does not require any SAC payments.
- Water conservation efforts will reduce capacity charges as well as volume charges.



For more information

Contact Nanette Ewald at 651-602-4767 or Nanette.Ewald@metc.state.mn.us.