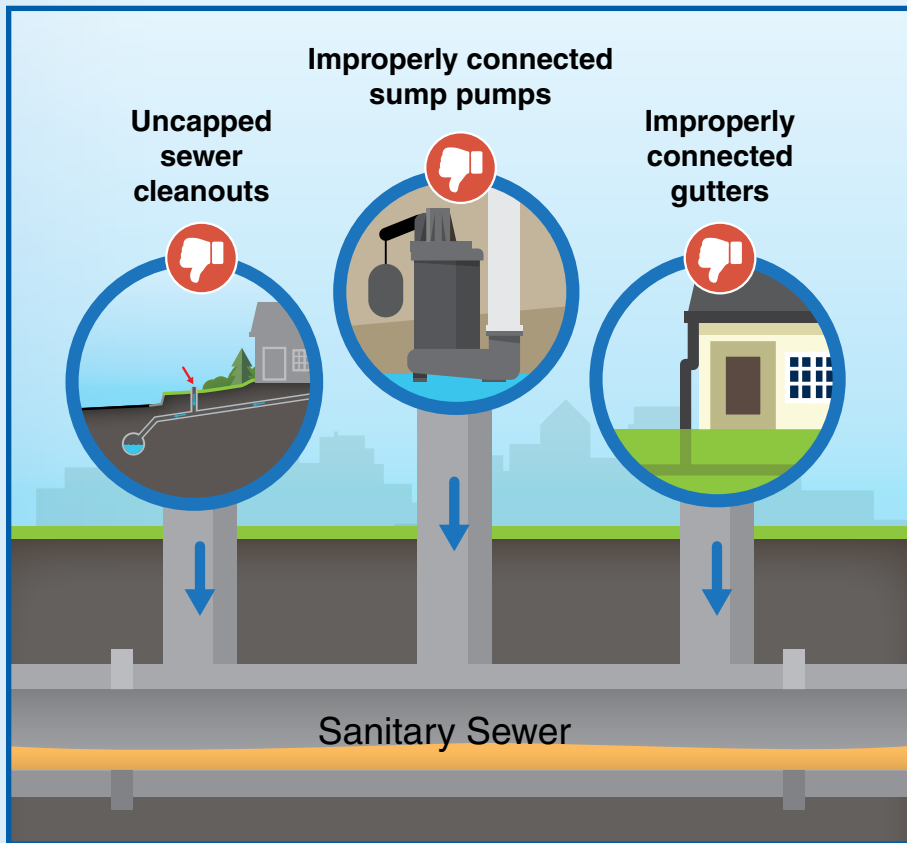
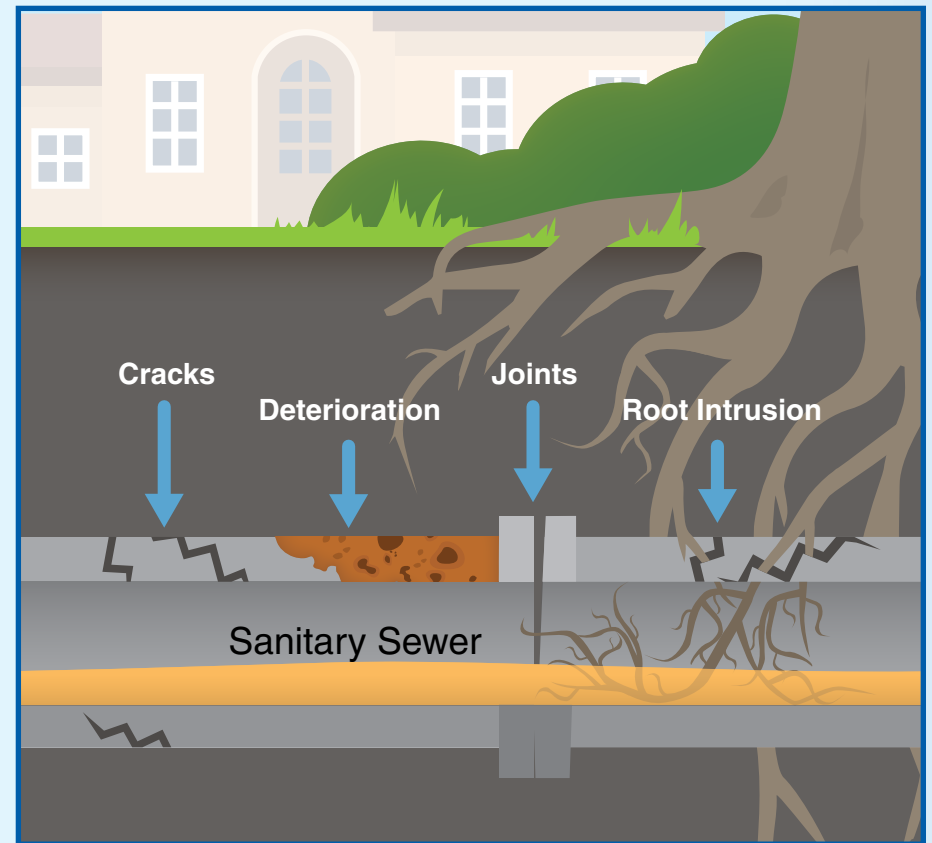


# I/I costs everyone!

**Inflow and infiltration (I/I)** is clear water that enters the wastewater system. It overloads the system and can cause costly sewer backups into homes and buildings.



**Inflow** is clear water that quickly enters the wastewater system after rainfall events from sources such as sewer cleanouts, sump pumps, gutters, building foundation drains, and broken maintenance hole covers.



**Infiltration** is clear water that gradually enters the wastewater system below ground through cracks and openings in sewer service lines and joints, and public sewer mains and deteriorated maintenance holes.