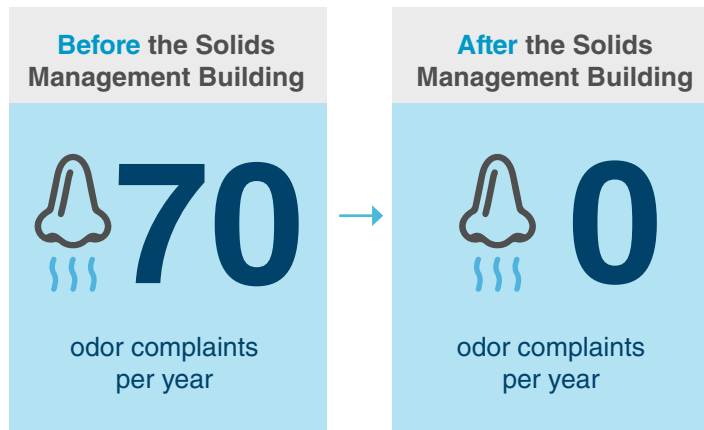




The fourth incinerator provides the lowest impact to surrounding communities.

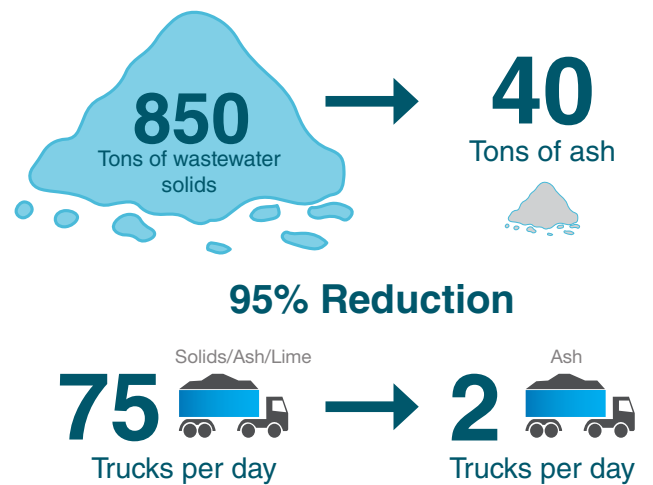
Low Odors

Metropolitan Council Environmental Services (MCES) is committed to being a good neighbor. Incineration technology at the Metro Plant has been a key factor in reducing odors from the Metro Plant. Adding a fourth incinerator at the Solids Management Building will help MCES continue to be a good neighbor to surrounding communities.



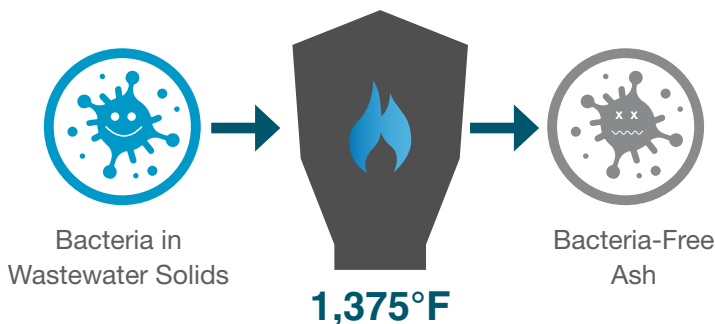
Minimal Trucking

Incineration significantly reduces the quantity of material to be hauled off-site for disposal, having the least impact on the community.



Eliminates Bacteria

Incineration burns wastewater solids which eliminates odor- and disease-causing bacteria.



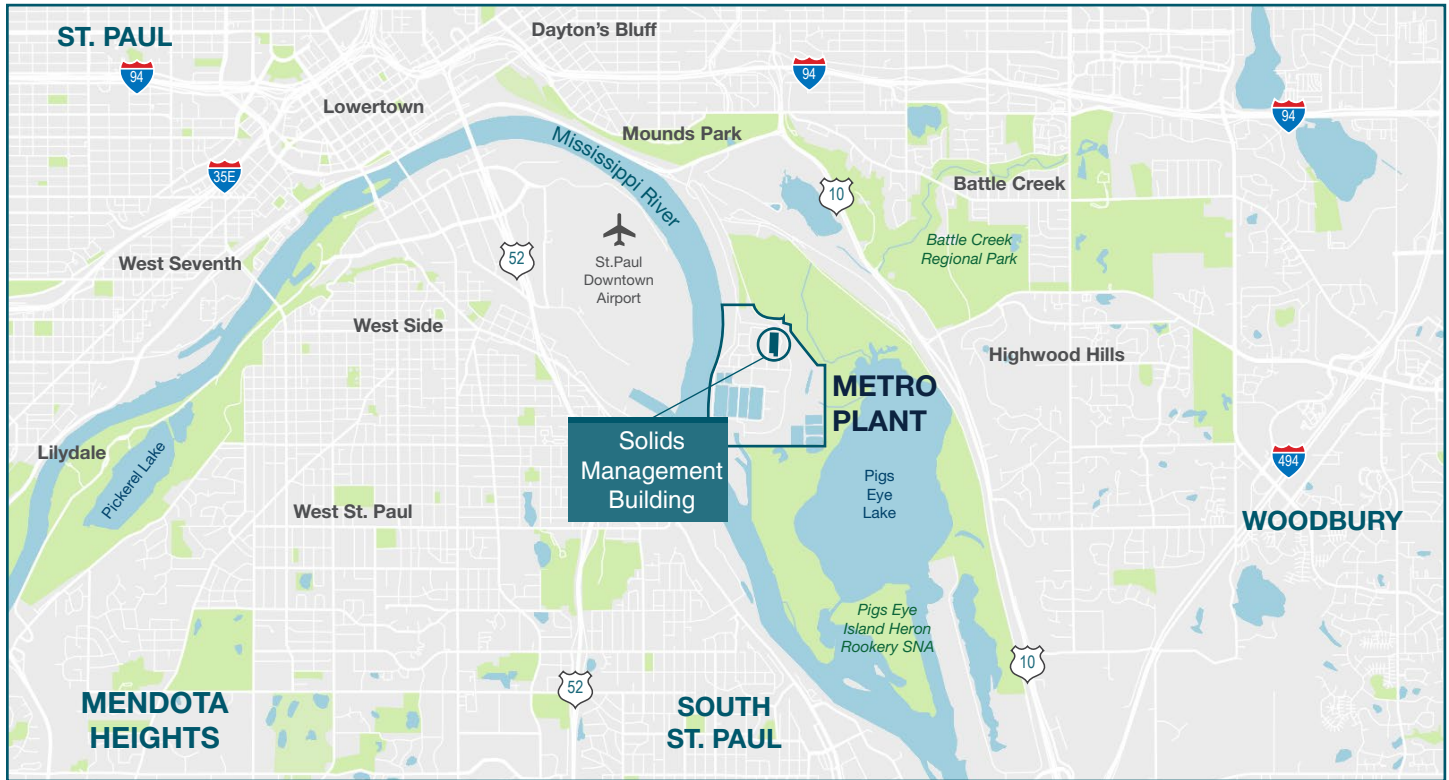
No Offsite Land Impacts

The fourth incinerator will require a small addition to an existing building and will be constructed entirely within the Metro Plant property boundary. The fourth incinerator will limit the amount of off-site land needed for solids management.



Communities Surrounding the Metro Plant

The Metro Plant is located southeast of downtown Saint Paul on the Mississippi River next to Pigs Eye Lake. The closest neighborhoods surrounding the Metro Plant include Dayton’s Bluff, Battle Creek, Mounds Park, Highwood Hills, and Westside, and the City of South Saint Paul.



Low Impact from Air Emissions

MCES evaluated impacts of adding a fourth incinerator to surrounding communities. Air emissions from the fourth incinerator are estimated to contribute to less than 1% of ambient levels. The fourth incinerator will be designed with state-of-the-art air pollution control equipment and have negligible impact on existing air quality.

Environmental Impact

The environmental impact of adding a fourth incinerator will be independently reviewed by the public, under the administration of the Minnesota Pollution Control Agency’s Environmental Assessment Worksheet, which will be completed voluntarily by MCES. A preliminary assessment indicates adding a fourth incinerator will have no adverse health risks at the Metro Plant fence line or in surrounding communities.



Learn more

Hotline: 651.691.9124
 Email: info@metrosolids.com
 Web: metrocouncil.org/metrosolids

MCES Mission

Provide wastewater services and integrated planning to ensure sustainable water quality and water supply for the region.