

EDEN PRAIRIE BLUE LAKE SIPHON SUSTAINABLE LANDSCAPE RESTORATION

PROJECT OVERVIEW

As part of its mission to improve water quality and ensure a sustainable water supply for the region, Metropolitan Council Environmental Services is working to plant landscapes that need less water, reduce runoff, and provide habitat for birds, bees, and butterflies. Sustainable landscapes include drought-tolerant turf, bee lawn, and Minnesota native grasses, flowers, trees, and shrubs.

Sustainable landscapes are the foundation for resilient ecosystems that beautify neighborhoods, protect clean water, and promote economic and environmental resiliency.



WHAT NEIGHBORS CAN EXPECT

The Met Council is committed to being a good neighbor. As we work to convert our properties to sustainable landscapes, you will see us removing invasive plants and trees, prepping the site for plantings, mowing occasionally, and doing other landscaping work.

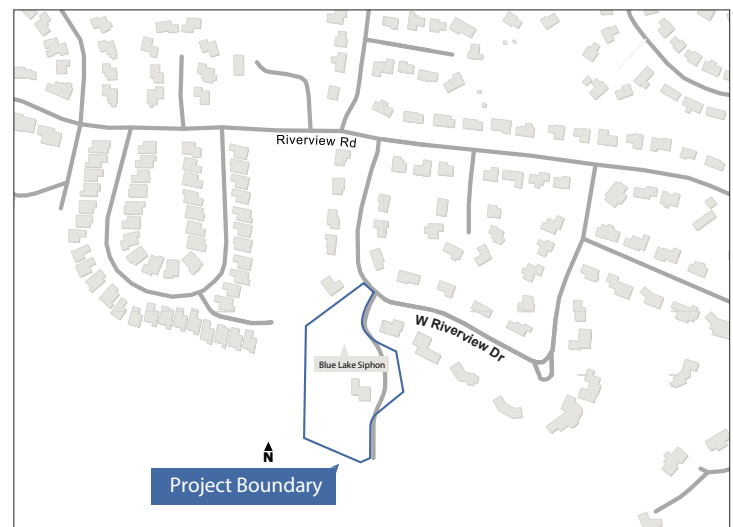
Thoughtful design – We have engaged skilled landscape architects and landscaping contractors that specialize in sustainable landscapes to design and install a landscape well-suited to the site, neighborhood, and local environment.

Timely communication – If you live near a sustainable landscape restoration project, we will let you know about activities planned near you by mail, email, or posted signs. We will respond quickly to messages received by email and on our project phone line.

Considerate installation – We will do our best to minimize negative impacts to the neighborhood, however there may be some noise during business hours and we may use and store large equipment on the property.

Ongoing care and maintenance – The landscape will look sparse and undeveloped for a few years as plants get established. During this time we will proactively manage invasives and allow for taller growth to cultivate plants according to their needs.

PROPERTY MAP

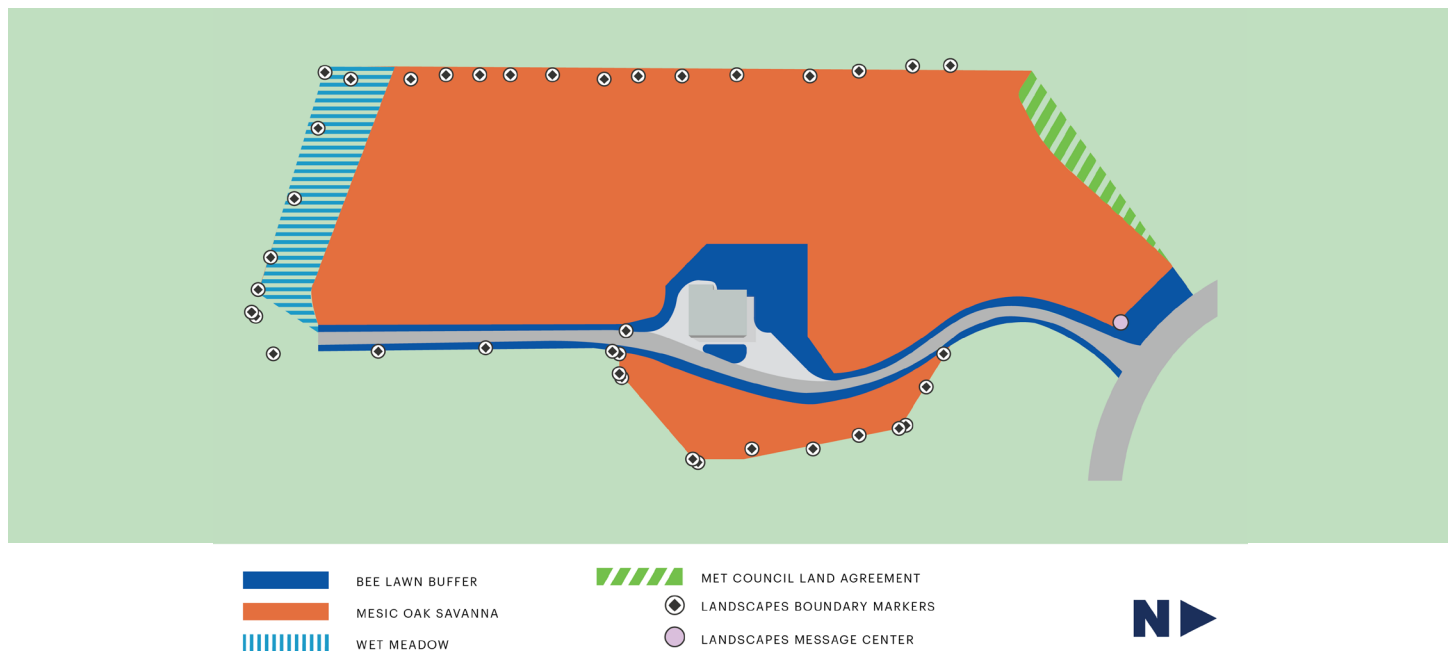


Property address

10488 West Riverview Drive
Eden Prairie, MN 55347

EDEN PRAIRIE BLUE LAKE SIPHON: SUSTAINABLE LANDSCAPE SITE PLAN

The Met Council is committed to maintaining its sustainable landscapes and has hired skilled landscape architects and contractors to design and manage the site in your neighborhood. See below for a sketch of the plans.



DESIGN NOTES

This plan will incorporate:

- Planting native plants, shrubs, and bur oak trees
- Installing erosion control practices
- Removing diseased and distressed non-native trees
- Managing invasive, non-native brush and herbaceous weeds
- Long-term maintenance of the site once restoration is complete

TIMELINE

Cultivating a sustainable landscape with native plants takes a few years. While the site may look undeveloped for the first couple of years, we will proactively manage weeds and invasives as plants become established. Please do not mow, spray, or walk on the property. This can damage the maturing landscape.

SLEEPS

Initial site planting.
Invasives are removed.
Site is undeveloped.

YEAR 1 - 2022

CREEPS

Small plants emerge and
are vulnerable to damage.
Site is undeveloped.

YEAR 2 - 2023

SWEEPS

Plants become identifiable
and grow in patchy clusters.
Site starts to establish.

YEAR 3 - 2024

LEAPS

Plants mature and
become self-sustaining.
Site looks like a natural area.

YEAR 4 - 2025

Contact Us for Questions or Concerns

For assistance, call | Si necesita ayuda, llame al | Xav tau kev pab,
hu | Wixii kaalmo ah, ka wac | Để được hỗ trợ, hãy gọi |
လတ်လူနီတိတ်မၤစၢၤအဂီၢ်, ကိးဘုၣ်ဝဲ | 651-286-8452
Email: MCEsnativelandscapes@WSBeng.com

Find site plan and additional

information about the project online at:
metro council.org/SustainableLandscapes