

# ROSEMOUNT LIFT STATION 75 SUSTAINABLE LANDSCAPE RESTORATION

## PROJECT OVERVIEW

As part of its mission to improve water quality and ensure a sustainable water supply for the region, Metropolitan Council Environmental Services is working to plant landscapes that need less water, reduce runoff, and provide habitat for birds, bees, and butterflies. Sustainable landscapes include drought-tolerant turf, bee lawn, and Minnesota native grasses, flowers, trees, and shrubs.

Sustainable landscapes are the foundation for resilient ecosystems that beautify neighborhoods, protect clean water, and promote economic and environmental resiliency.



## WHAT NEIGHBORS CAN EXPECT

The Met Council is committed to being a good neighbor. As we work to convert our properties to sustainable landscapes, you will see us removing invasive plants and trees, prepping the site for plantings, mowing occasionally, and doing other landscaping work.

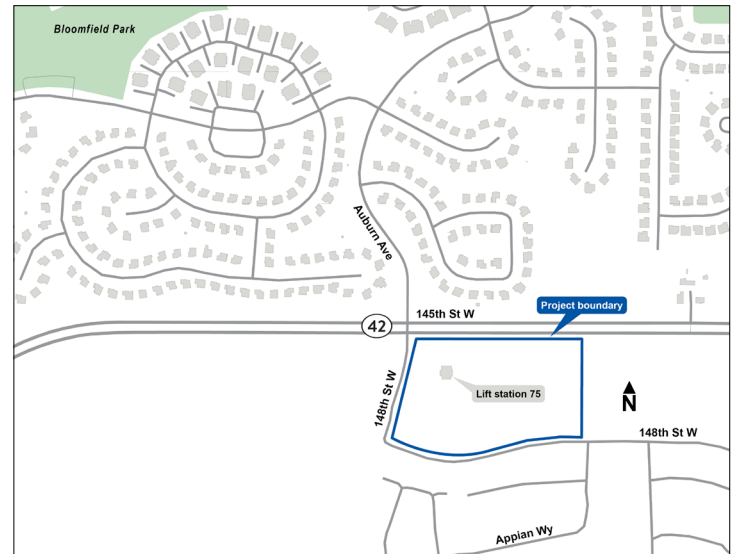
**Thoughtful design** – We have engaged skilled landscape architects and landscaping contractors that specialize in sustainable landscapes to design and install a landscape well-suited to the site, neighborhood, and local environment.

**Timely communication** – If you live near a sustainable landscape restoration project, we will let you know about activities planned near you by mail, email, or posted signs. We will respond quickly to messages received by email and on our project phone line.

**Considerate installation** – We will do our best to minimize negative impacts to the neighborhood, however there may be some noise during business hours and we may use and store large equipment on the property.

**Ongoing care and maintenance** – The landscape will look sparse and undeveloped for a few years as plants get established. During this time we will proactively manage invasives and allow for taller growth to cultivate plants according to their needs.

## PROPERTY MAP

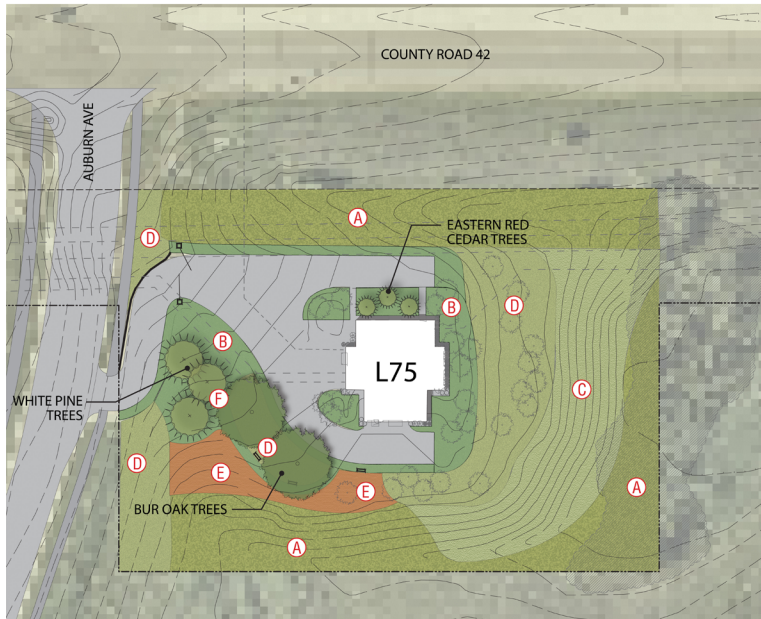


### Property address

1700 145th St W  
Rosemount, MN 55068

# ROSEMOUNT LIFT STATION 75: SUSTAINABLE LANDSCAPE SITE PLAN

The Met Council is committed to maintaining its sustainable landscapes and has hired skilled landscape architects and contractors to design and manage the site in your neighborhood. See below for a sketch of the plans.



Drafted April 2024



## LEGEND



Native stormwater prairie



Bee lawn



Mixed-height prairie



Short grass prairie



Wildflower rain garden



Native trees and shrubs

## DESIGN NOTES

This plan will incorporate:

- Bee lawn and native prairie to replace traditional blue grass lawn
- Evergreen trees on the west and north sides to buffer winter winds and screen views of the building
- A rain garden planted with deep-rooted native flowers that will capture runoff
- Two large Bur Oak trees to provide habitat for birds and caterpillars (pollinators)
- Maintenance of existing beneficial trees and the removal of invasive plants and trees

## TIMELINE

Cultivating a sustainable landscape with native plants takes a few years. While the site may look undeveloped for the first couple of years, we will proactively manage weeds and invasives as plants become established. Please do not mow, spray, or walk on the property. This can damage the maturing landscape.

### SLEEPS

Initial site planting.  
Invasives are removed.  
Site is undeveloped.

YEAR 1

### CREEPS

Small plants emerge and are vulnerable to damage.  
Site is undeveloped.

YEAR 2

### SWEEPS

Plants become identifiable and grow in patchy clusters.  
Site starts to establish.

YEAR 3

### LEAPS

Plants mature and become self-sustaining.  
Site looks like a natural area.

YEAR 4

## CONTACT US

For assistance, call | Si necesita ayuda, llame al | Xav tau kev pab, hu |  
Wixii kaalmo ah, ka wac | Để được hỗ trợ, hãy gọi |  
လတ်ဘုန့်တံာ်မၤစၢၤအဂီၢ်, ကိးဘုန့်ဝဲ | 651-760-0075  
Email: connect@sustainablelandscaperestoration.org

Find site designs and additional information about the project online at: [sustainablelandscaperestoration.org](https://sustainablelandscaperestoration.org).