

COON RAPIDS SEWER INTERCEPTOR REHABILITATION DRAFT FACILITY PLAN



Dan Chouinard, Principal Engineer
Tim Wedin, Assistant Engineering Manager



Karen Erickson, Project Manager
Rachel Kranz, Lead Engineer
Lexi Duve, Project Engineer



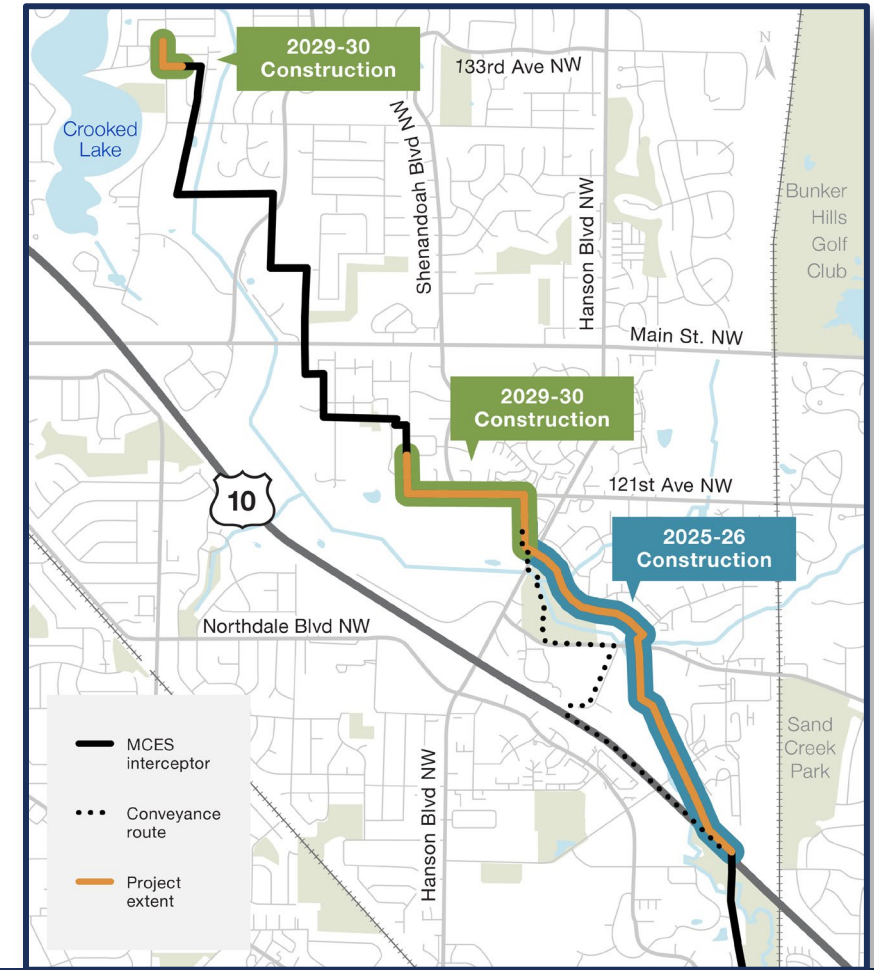
Jackie Nehrbass, Project Communications

PUBLIC HEARING - November 19, 2024



PUBLIC HEARING PURPOSE

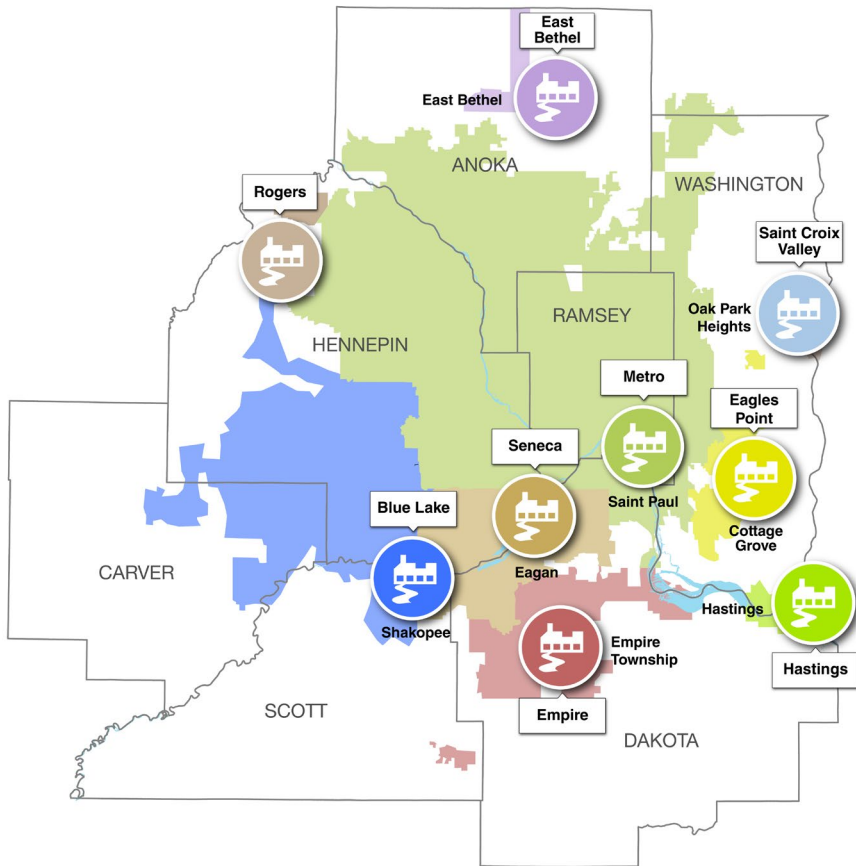
- Summarize Project
- Alternatives Evaluated
- Answer Questions
- Receive Comments for Public Record



AGENDA

- Welcome and Introductions
- Presentation
 - MCES Overview
 - Purpose of Facility Plan
 - Location
 - Problem Statement
 - Rehabilitation Alternatives
 - Project Recommendation
 - Next Steps
- Questions and Comments

MCES – SERVICE AREA AND SERVICES



WE SERVE ~50% OF MINNESOTA'S POPULATION



WHO WE SERVE

7-county Twin Cities Metro Area
111 communities
3,000 square miles
2,800,000+ people



OUR FACILITIES

9 wastewater treatment plants
640 miles of interceptors
61 lift stations (pumping stations)
250 million gallons per day (average)

WHAT IS A FACILITY PLAN?

MCES FACILITY PLAN

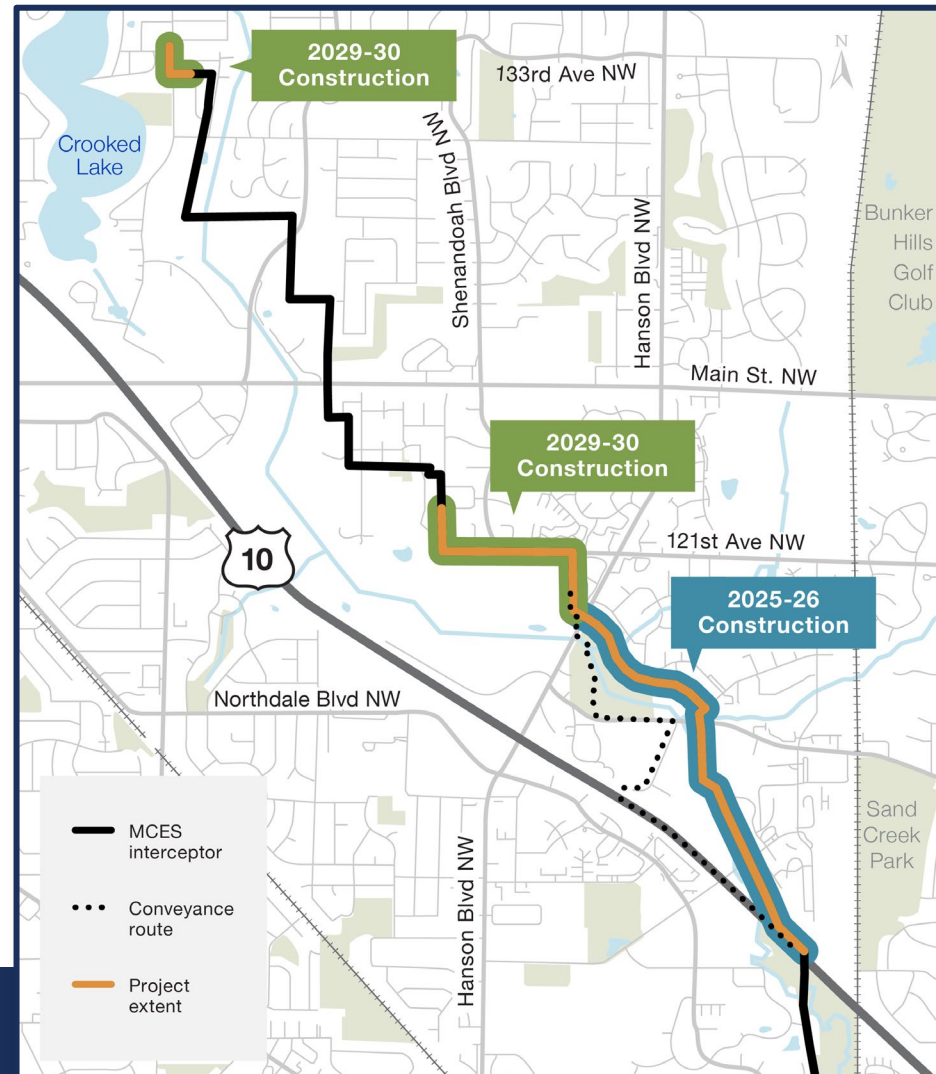
This document is a prerequisite to qualify for financing through the Minnesota Public Facilities Authority. The project is funded by using the utility fees. The MCES Facility Plan:

- Summarizes the current state of the existing MCES wastewater sewer system
- Identifies the need for rehabilitating existing facilities or constructing new facilities
- Determines the potential environmental impacts of new facilities
- Evaluates alternatives and recommends a course action



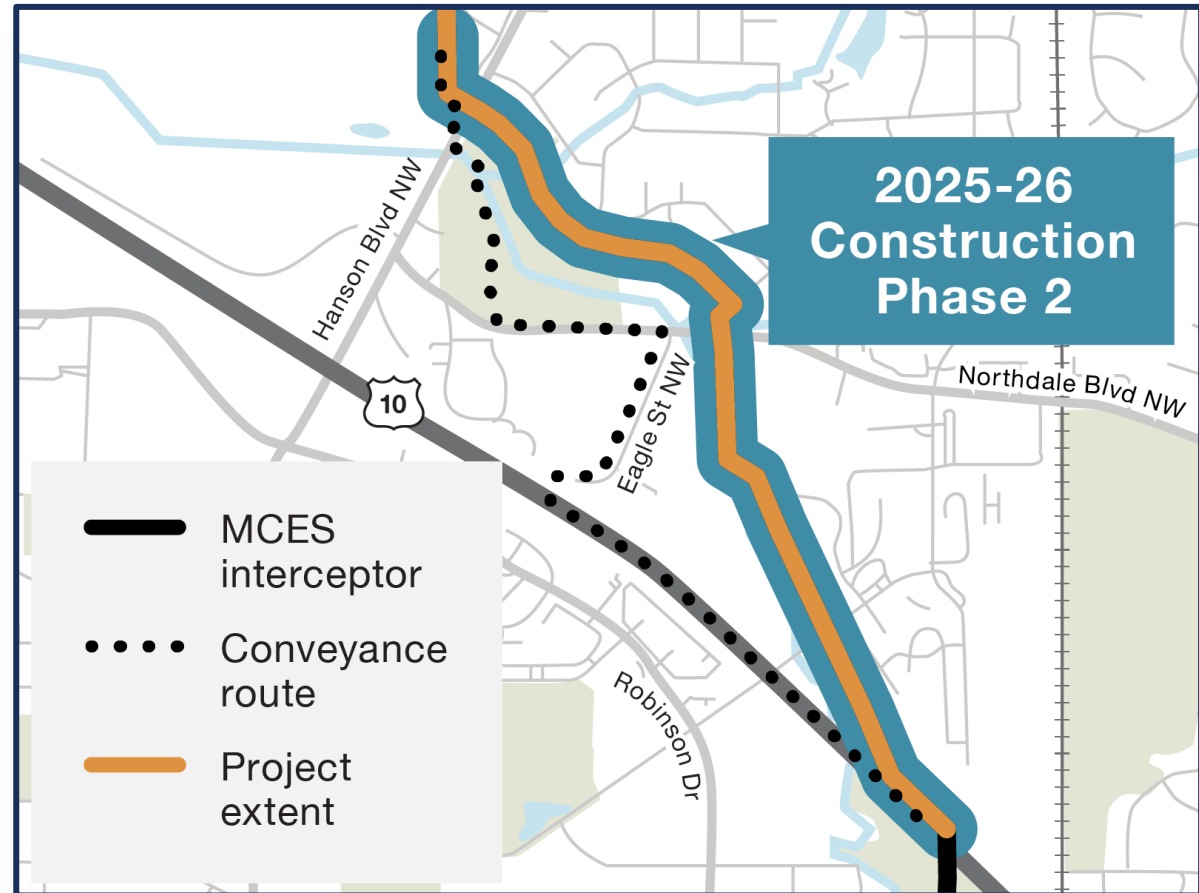
FACILITY PLAN AREA

- Three Project Sites
 - Phase 2
 - Phase 3 Site 1
 - Phase 3 Site 2
- Phase 1 completed in 2024



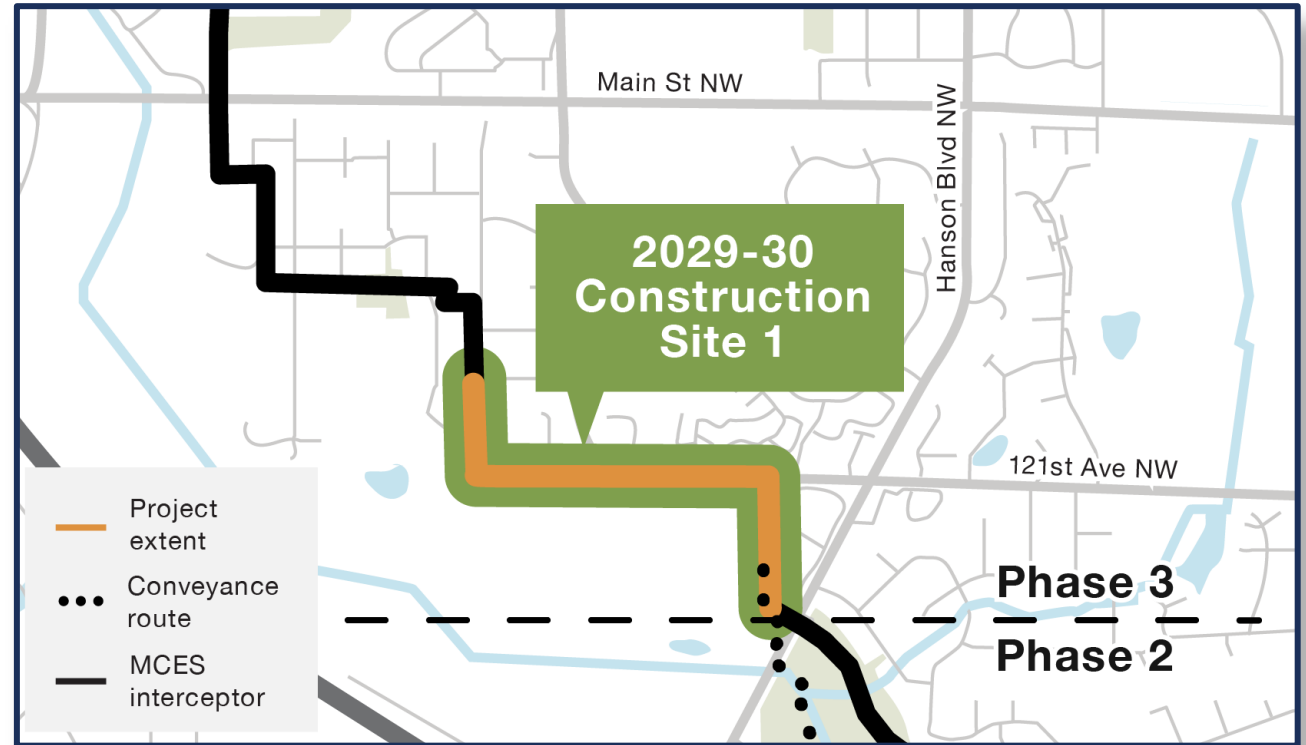
PHASE 2

- Constructed in 1965
- Condition 4/Poor
- Hanson Blvd to Highway 10
- 26 – 48" Concrete MHs
- 7,193 LF of 48" RCP



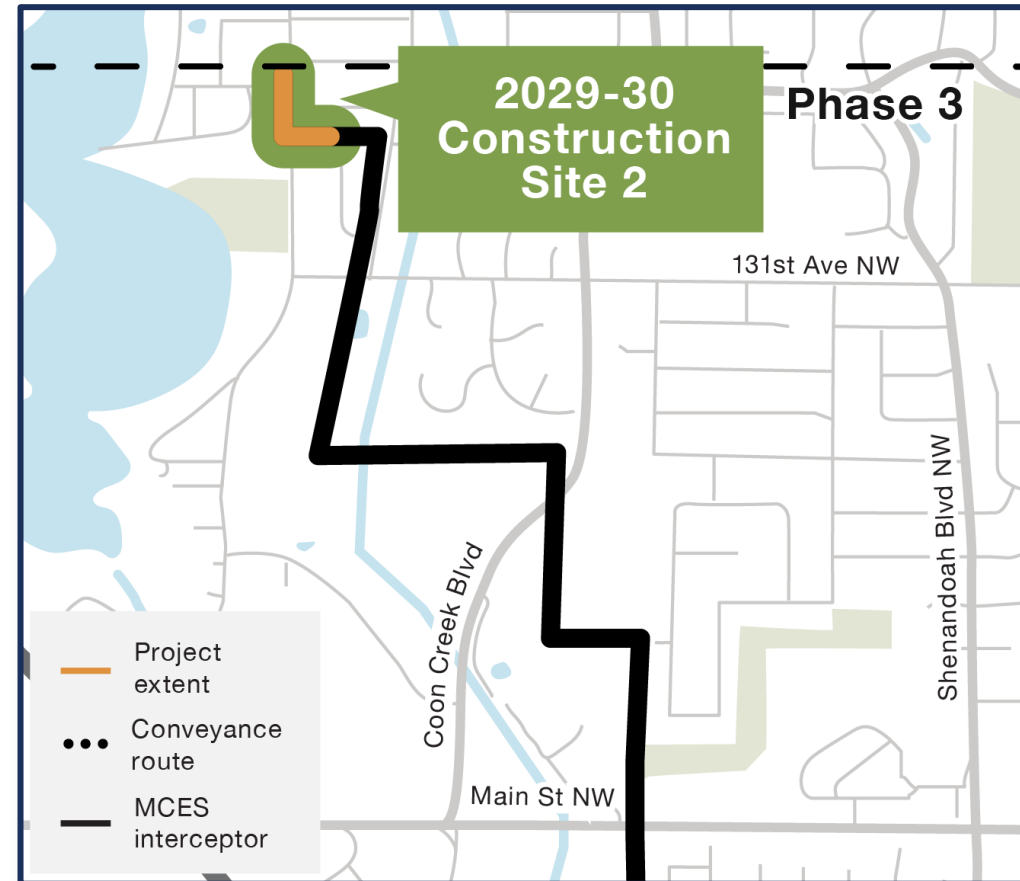
PHASE 3 SITE 1

- Constructed in 1965 and 1972
- Condition 4/Poor and 3.5/Fair-Poor
- Located along Partridge Street NW and 121st Ave NW
- 11 – 48" Concrete MHs
- 815 LF of 42" RCP
- 2,090 LF of 48" RCP



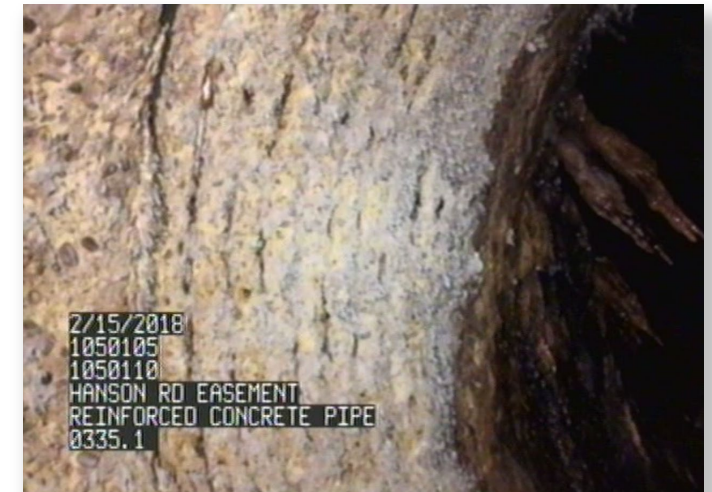
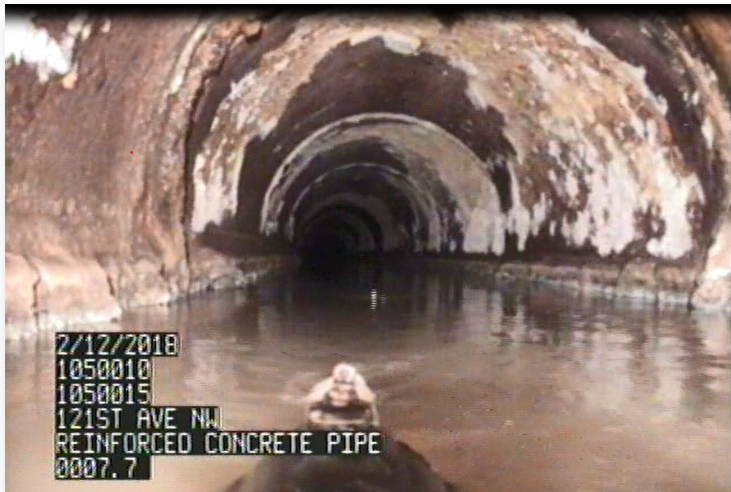
PHASE 3 SITE 2

- Constructed in 1972
- Condition 3.5/Fair-Poor and 4/Poor
- Crooked Lake Blvd 133rd Ave to Bittersweet Street
- Meter Station M 218 to MH 32
- Meter Station M 218
- 2-48" Concrete MHs
- 405 LF of 36" RCP



PROBLEM STATEMENT

- Aging infrastructure
- Outdated approach
- Pipe Inspection
- Degraded pipe and maintenance holes
- Interceptor located in sensitive areas



EXISTING AND FUTURE FLOW

COON RAPIDS INTERCEPTOR EXISTING AND FUTURE FLOW

FACILITY	EXISTING		FUTURE (2050)	
	AVERAGE DAILY FLOW (MGD)	PEAK FLOW (MGD)	AVERAGE DAILY FLOW (MGD)	PEAK FLOW (MGD)
Phase 3, Site 2	1.34	4.01	1.65	4.80
Phase 3, Site 1	1.61	4.67	1.93	5.41
Phase 2	3.82	9.54	4.41	10.58

ALTERNATIVES EVALUATED

NO CHANGE	RENEW	REPLACE
<ul style="list-style-type: none">• Do nothing	<ul style="list-style-type: none">• CIPP Lining• Sliplining• MH Rehabilitation• CIPMH• Fiberglass MHs	<ul style="list-style-type: none">• Open-cut interceptor and MH Replacement

ALTERNATIVES EVALUATION

	DO NOTHING	CIPP LINING	SLIPLINING	OPEN-CUT REPLACEMENT
Environmental Impacts	Higher	Lower	Medium	Higher
Community Impacts	Higher	Lower	Medium	Higher
Permitting	N/A	Lower	Medium	Higher
Property Acquisition <small>(temporary)</small>	N/A	Lower	Lower	Higher
Capacity	Meets	Meets	Meets	Meets
Constructability	Higher	Lower	Lower	Higher
Construction Cost	\$42,100,000+	\$18,430,000	\$29,870,000	\$42,100,000

Recommended Alternative

CIPP & CIPMH LINING

- Installed new liner pipe inside the existing pipe & MHs
- Trenchless technology
- Temporary Conveyance



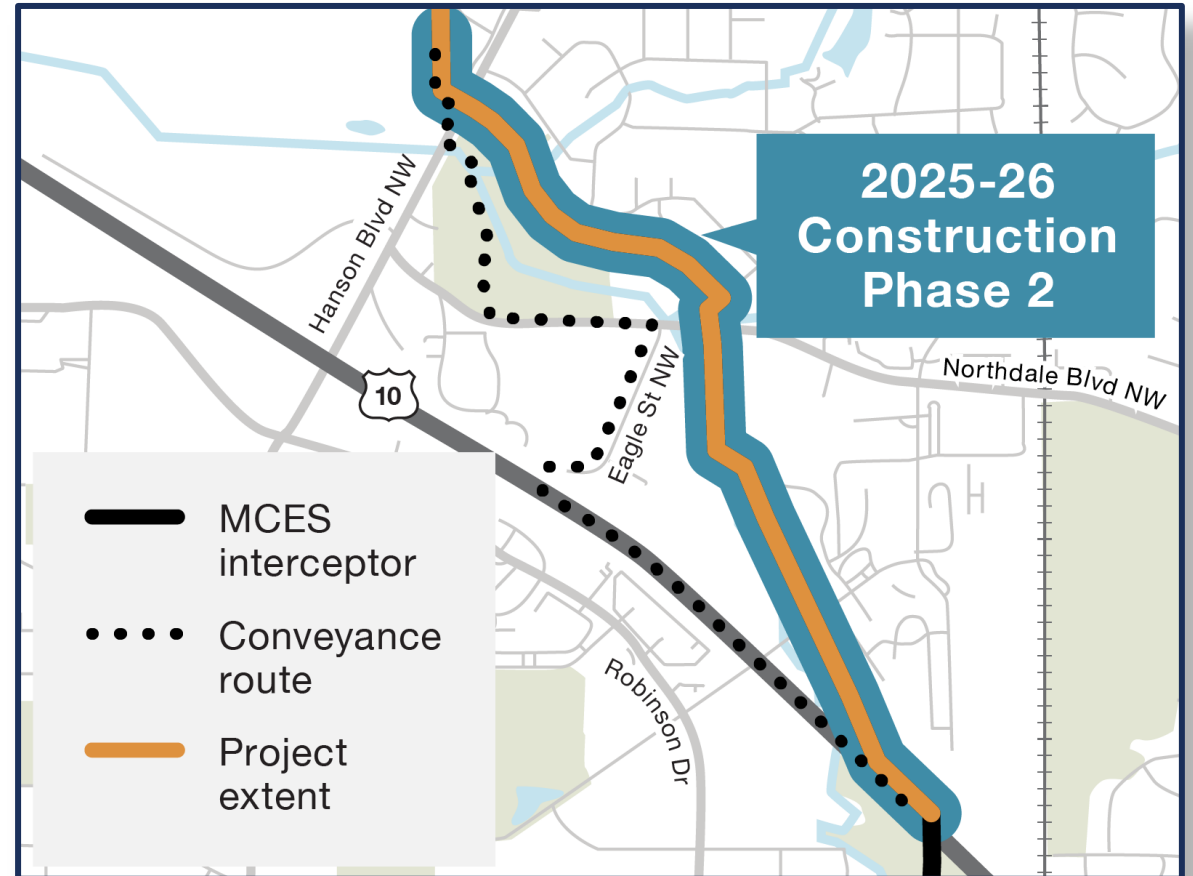
TEMPORARY CONVEYANCE

- Wastewater pumped from MH upstream of project to MH downstream of project
- Piping on grade



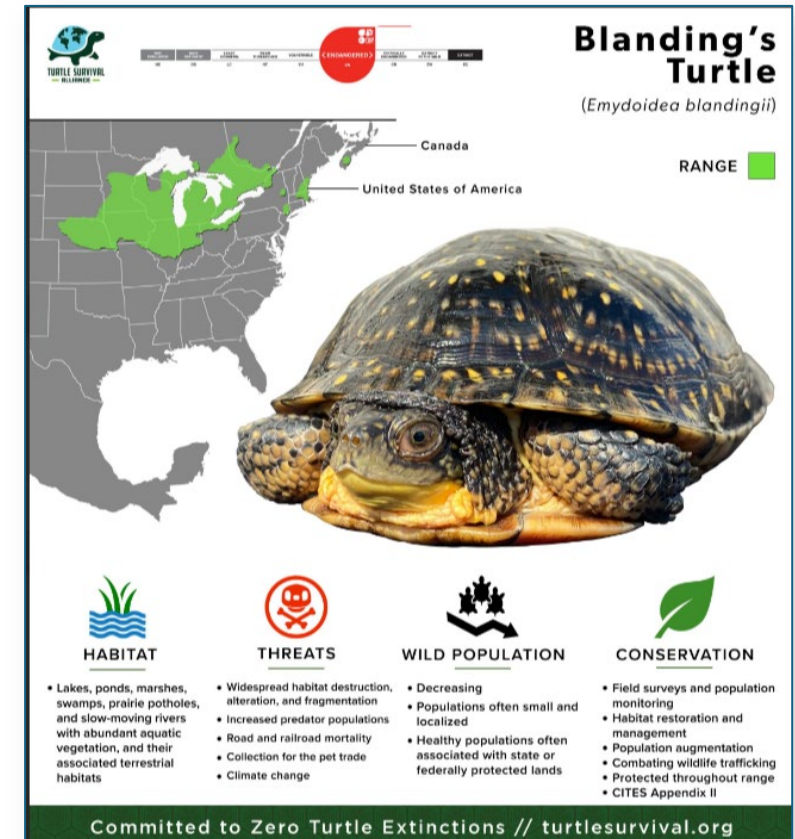
TEMPORARY CONVEYANCE ROUTES

- Phase 2 Temporary Conveyance Route
- Phase 3 Temporary Conveyance Route



COORDINATION

- Permits
- Local Agencies
- Utilities
- Environmental Evaluation
 - Wetland Delineations
 - Archaeological Review
 - Environmental Information Worksheet (EIW)
 - Threatened and Endangered Species: Blanding's Turtle



FINANCING

- MCES Project Financing
 - Loan from the Minnesota Public Facilities Authority
 - Below market-rate loans used to finance eligible projects which helps keep wastewater rates low
 - Paid for through existing municipal rates

No assessments to residents as part of this work

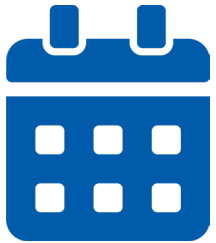
TOTAL COST AND RATE IMPACTS

- MCES Project Funding: Public Facilities Authority (PFA) loans (20-year term)
- Loans for these projects are paid from two funding sources:
 - Municipal Wastewater Charges (MWC): This is the MCES portion of your sewer bill
 - Sewer Availability Charge (SAC): This is a one-time charge for new connections
- Impacts on rates from \$18.43 million in loans*:
 - \$0.55 = Amount included in the annual sewer billing per household (\$242 annual average MCES wholesale rate charged to communities)
 - \$24.00 = Amount paid per year (for 20 years) from the SAC fund per new household connection (or equivalent).

SCHEDULE



NEXT STEPS



DECEMBER 1, 2024

Formal Comments on Draft Facility Plan due

JANUARY 29, 2025

Met Council Adoption of Facility Plan

MARCH 7, 2025

Submit Facility Plan to Minnesota Pollution Control Agency

ADDITIONAL INFORMATION

Copies of the draft facility plan are available on the Coon Rapids Sewer Rehabilitation project website.

Copies are available to review during regular business hours at:



COON RAPIDS CITY HALL
11155 Robinson Dr
Coon Rapids, MN, 55433

ANOKA COUNTY LIBRARY
11440 Crooked Lake Blvd NW
Coon Rapids, MN, 55433

SHARE QUESTIONS AND COMMENTS



**QUESTIONS OR COMMENTS?
CONTACT US!**

MAIL WRITTEN COMMENTS TO:

Pratakshya Bhandari

MCES – 390 Robert Street N., Saint Paul, MN, 55101

Comments must be received by 5:00 p.m. on December 1, 2024



PHONE

Project Hotline: 763-463-9661

Send TTY comments: 651-291-0904



EMAIL

info@crsewerrehab.com



WEBSITE

[metro council.org/sewerconstruction/
coonrapidsrehab](https://metro council.org/sewerconstruction/coonrapidsrehab)

THANK YOU!