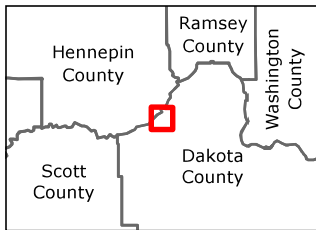
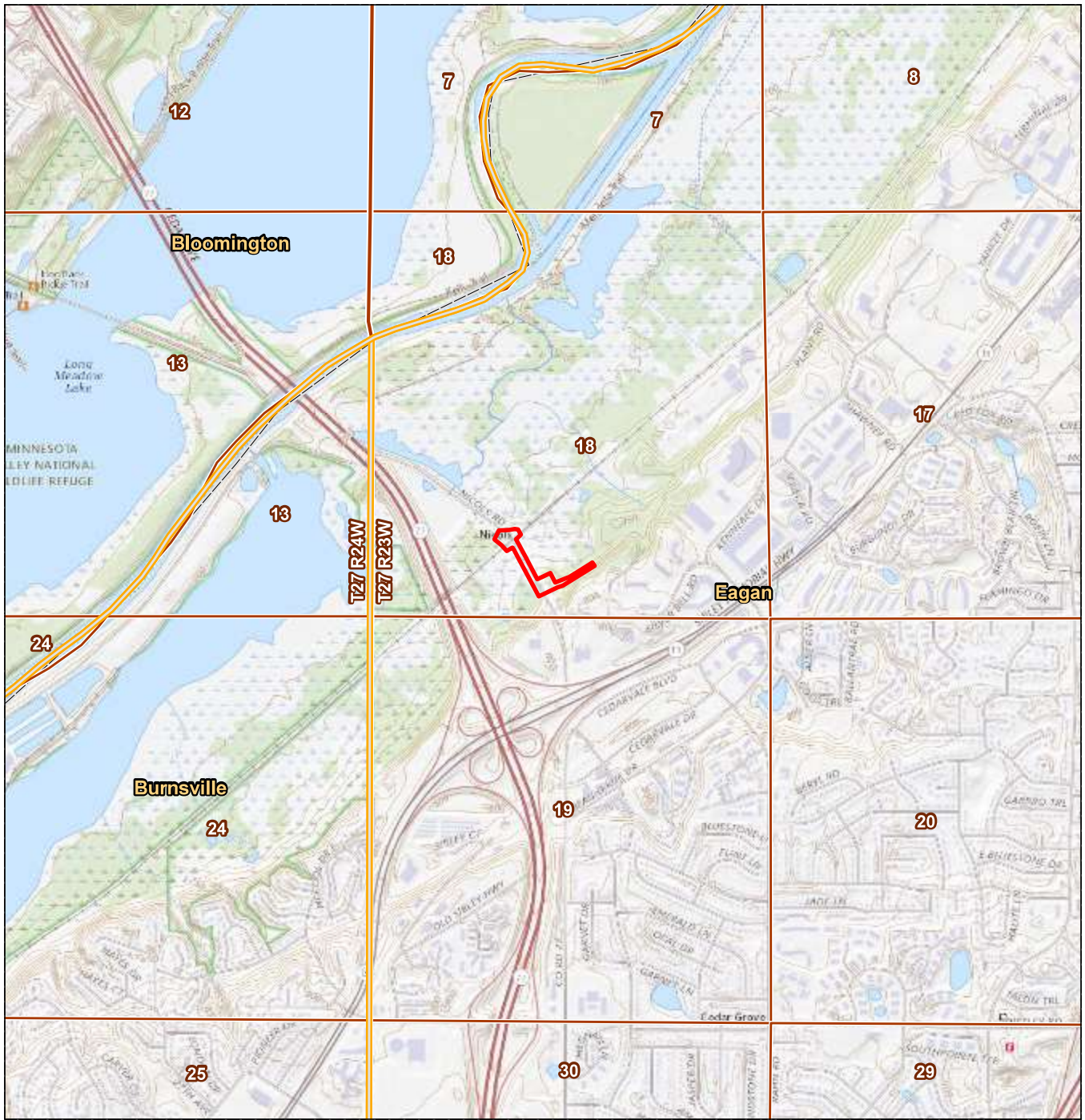


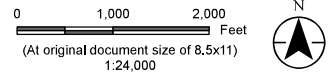
Appendix A

Figures

V:\2277\active\173420091\03_data\gis_cad\gis\proj\leaw\leaw.aprx Revised: 2024-01-09 By: kjmueller



Legend
Project Area



Project Location Prepared by KJM on 2024-01-09
T27N, R23W, S18
Eagan, Dakota Co., MN

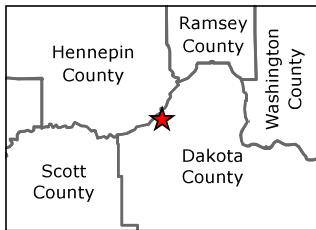
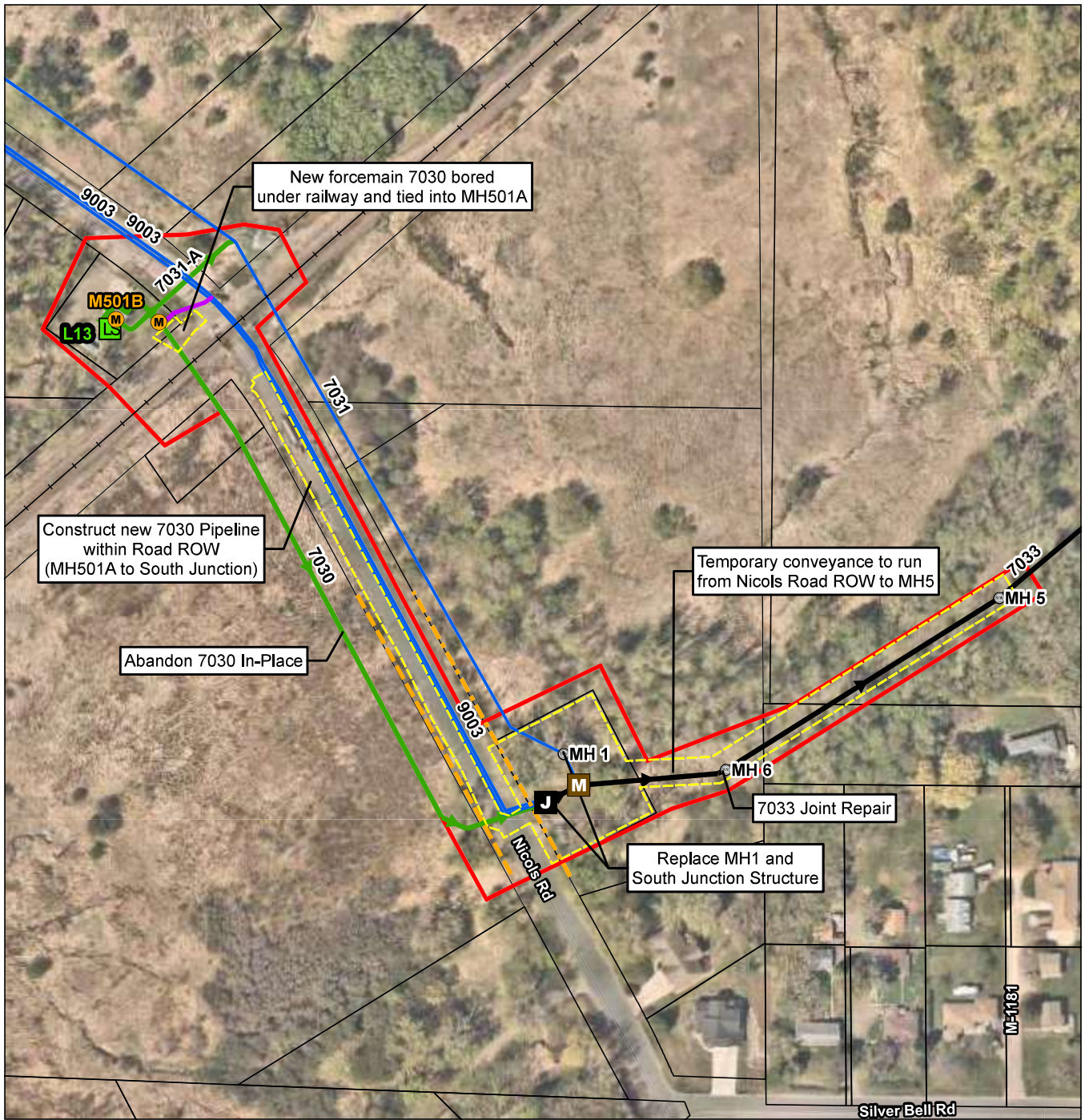
Client/Project Met Council Environmental Services 173420091
MCES 7031-9003 Siphon Outlet Improvements Project
EAW

Figure No. 1

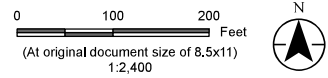
Title
Project Location USGS Topo Map

Disclaimer: This document has been prepared based on information provided by others as cited in the Notes section. Stantec has not verified the accuracy and/or completeness of this information and shall not be responsible for any errors or omissions which may be incorporated herein as a result. Stantec assumes no responsibility for data supplied in electronic format, and the recipient accepts full responsibility for verifying the accuracy and completeness of the data.

V:\2277\active\173420091\103_data\gis_cad\gis\proj\leaw\leaw.aprx Revised: 2024-01-09 By: kjmueller



- Legend**
- M Meters
 - Maintenance Holes
 - LS Lift Stations
 - M Meter Structure
 - J South Junction Structure
 - Road Right-of-Way
- Interceptors**
- ▶ Gravity
 - ▶ Forcemain
 - Siphon
 - Crossover
 - Limits of Disturbance
 - Project Location
 - Parcel Boundary



Project Location
T27N, R23W, S18
Eagan, Dakota Co., MN

Client/Project
Met Council Environmental Services
MCES 7031-9003 Siphon Outlet Improvements Project
EAW

Figure No.
2

Title
Project Location and Component Map

Prepared by KJM on 2024-01-09
173420091

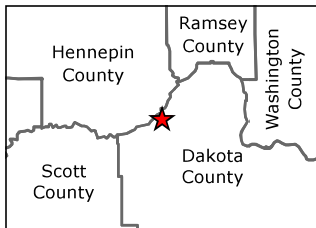
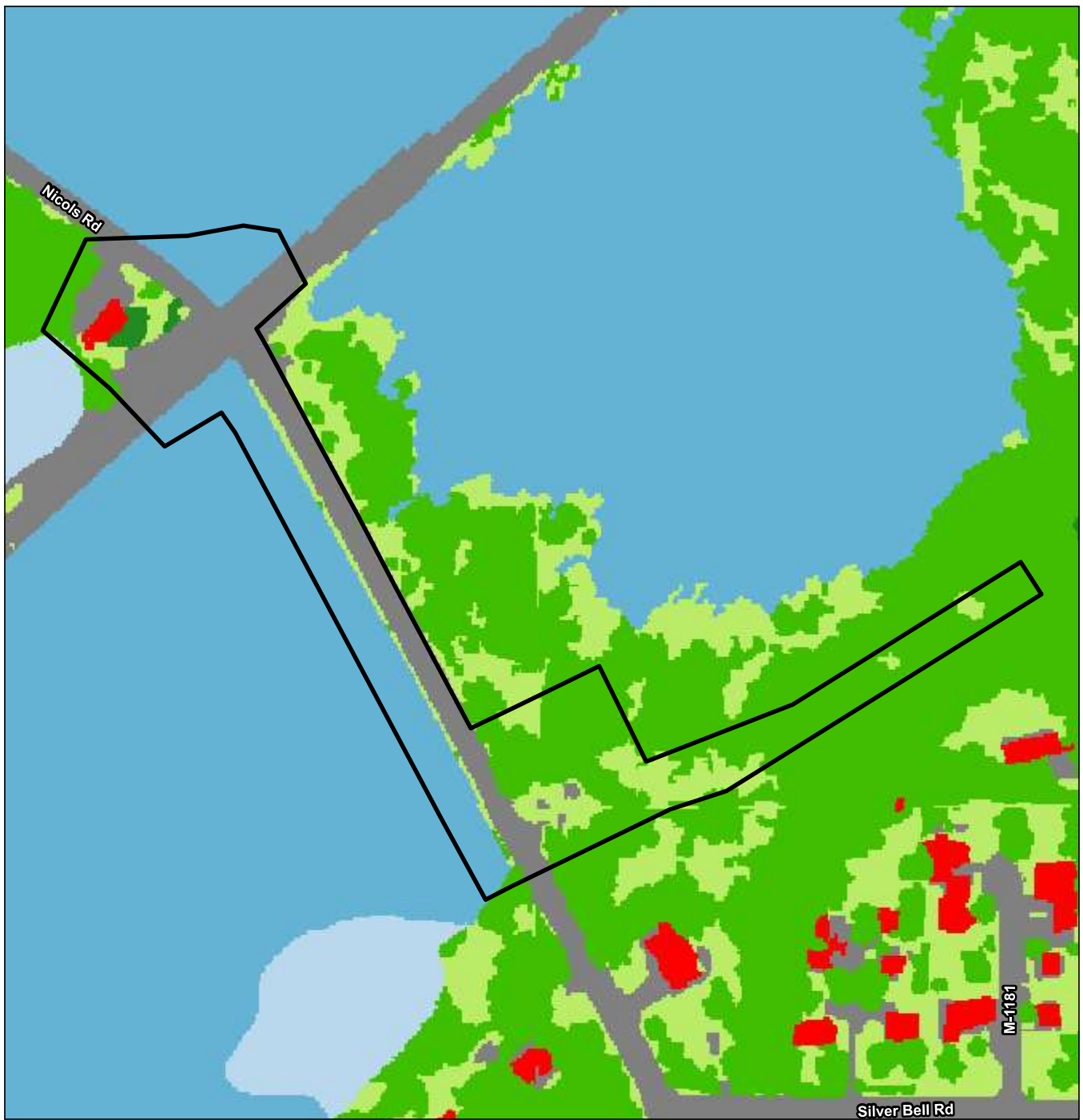
Notes

1. Coordinate System: NAD 1983 HARN Adj MN Dakota Feet
2. Data Sources: Stantec, MCES, MNDNR, MNDOT, Dakota Co.
3. Background: 2021 Dakota Co.

Project Location and Component Map

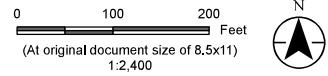
Disclaimer: This document has been prepared based on information provided by others as cited in the Notes section. Stantec has not verified the accuracy and/or completeness of this information and shall not be responsible for any errors or omissions which may be incorporated herein as a result. Stantec assumes no responsibility for data supplied in electronic format, and the recipient accepts full responsibility for verifying the accuracy and completeness of the data.

V:\2277\active\173420091\03_data\gis_cad\gis\proj\leaw\leaw.aprx Revised: 2024-01-09 By: kjmueller



Notes
 1. Coordinate System: NAD 1983 HARN Adj MN Dakota Feet
 2. Data Sources: Stantec, MnGeo, MnDOT
 3. Background: UMN - Twin Cities 1-Meter Land Cover (2016)

- Legend**
- Project Area
 - Grass/Shrub
 - Buildings
 - Roads/Paved Surfaces
 - Deciduous Tree Canopy
 - Coniferous Tree Canopy
 - Emergent Wetland
 - Forested/Shrub Wetland

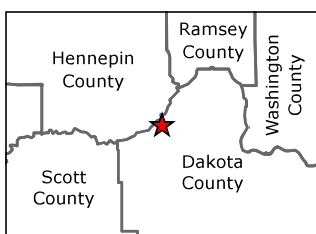
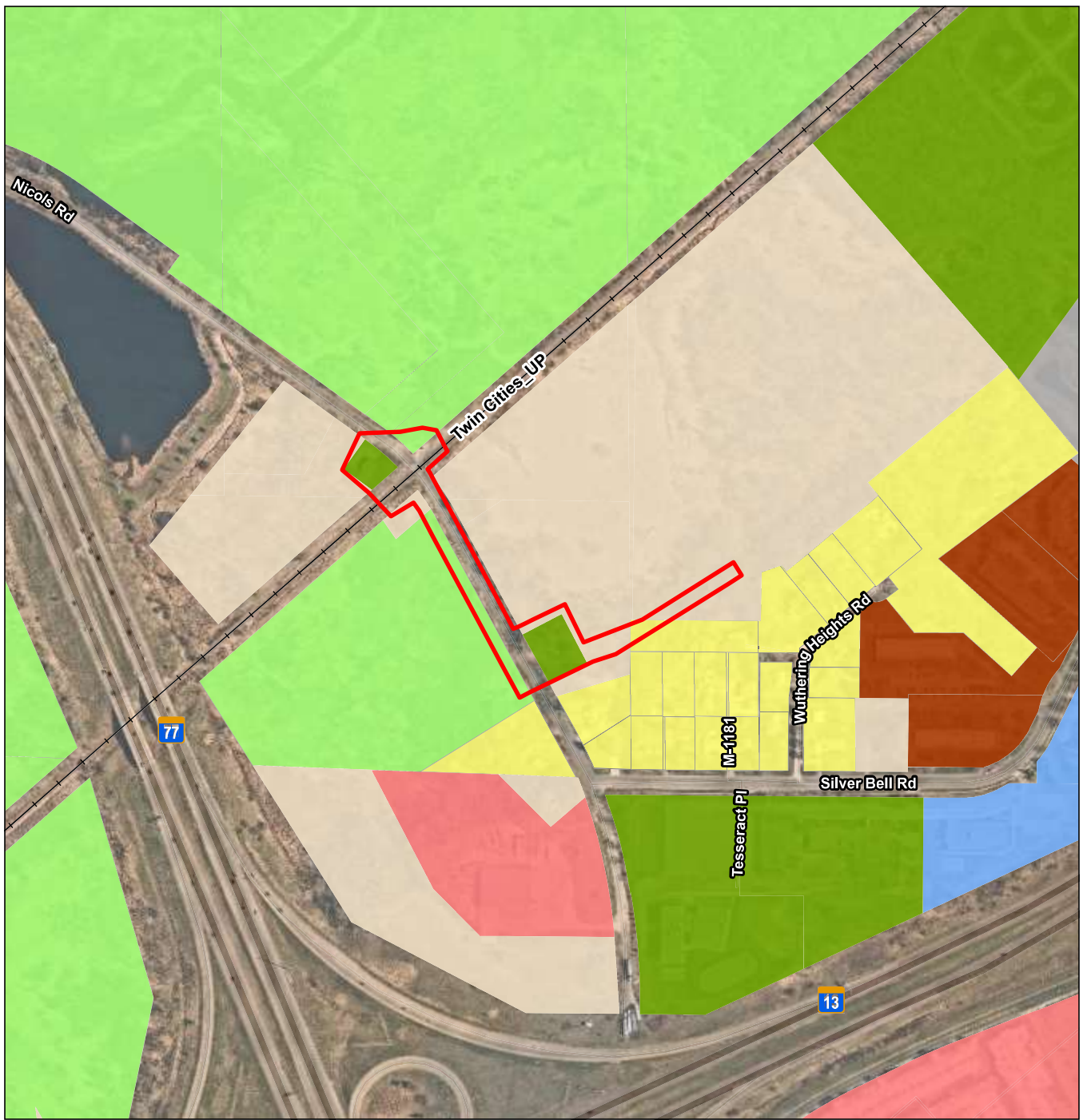


Project Location T27N, R23W, S18 Eagan, Dakota Co., MN
 Prepared by KJM on 2024-01-09

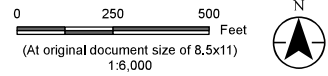
Client/Project Met Council Environmental Services 173420091
 MCES 7031-9003 Siphon Outlet Improvements Project
 EAW

Figure No. 3
Title Land Cover

Disclaimer: This document has been prepared based on information provided by others as cited in the Notes section. Stantec has not verified the accuracy and/or completeness of this information and shall not be responsible for any errors or omissions which may be incorporated herein as a result. Stantec assumes no responsibility for data supplied in electronic format, and the recipient accepts full responsibility for verifying the accuracy and completeness of the data.



- Legend**
- Project Area
 - City of Eagan Existing Land Use**
 - Single Family Detached
 - Multifamily-Apartment/Condo
 - Office/Service
 - Retail Commercial
 - Industrial
 - Quasi-Public
 - Park
 - Open Space



Project Location
T27N, R23W, S18
Eagan, Dakota Co., MN

Prepared by KJM on 2024-01-09

Client/Project
Met Council Environmental Services
MCES 7031-9003 Siphon Outlet Improvements Project
EAW

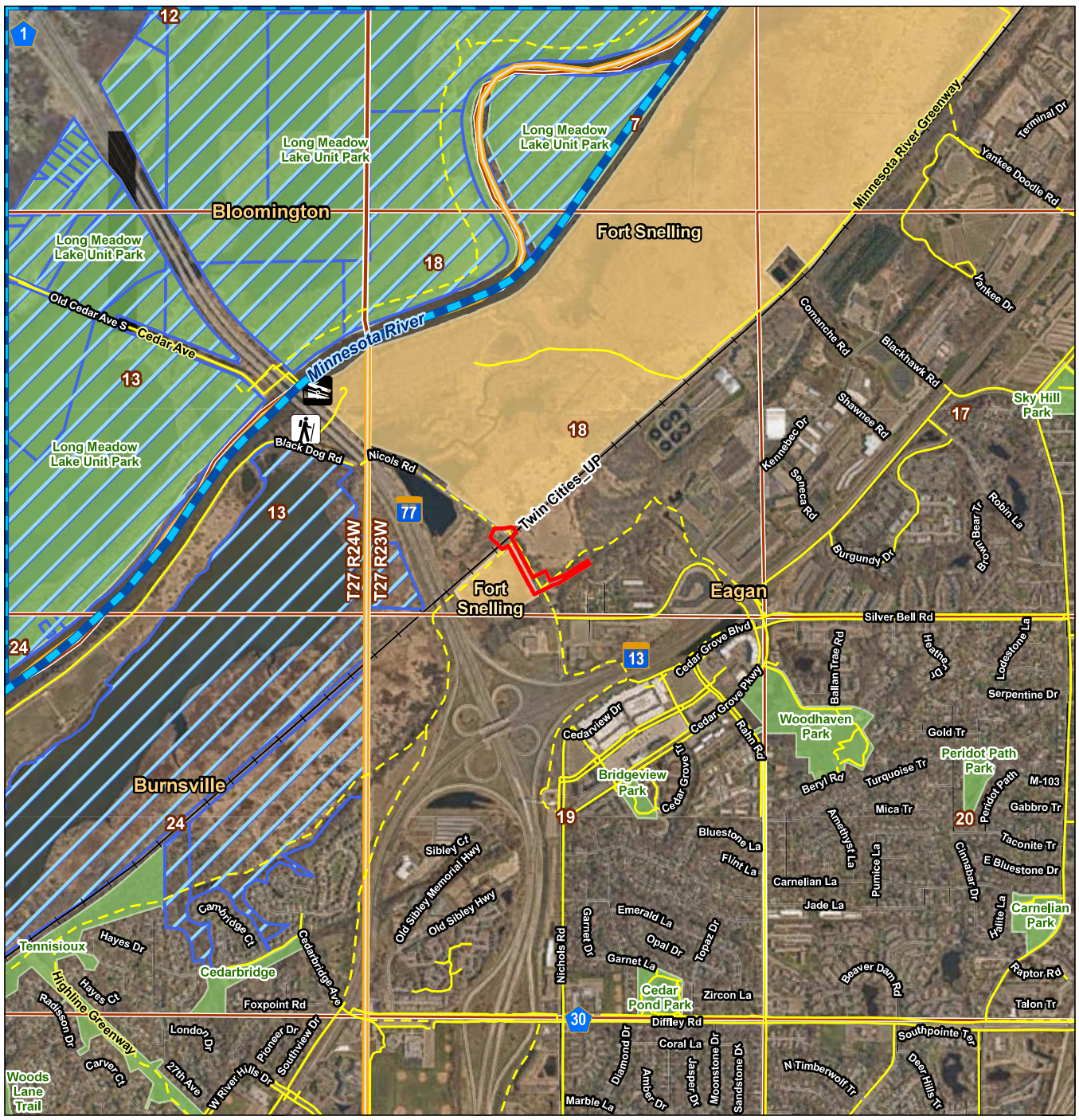
173420091

Figure No.
4

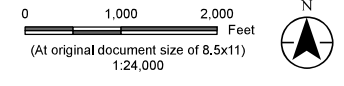
Existing Land Use

V:\2277\active\173420091\03_data\gis_cad\gis\proj\leaw.aprx Revised: 2024-01-09 By: kjmueller

Disclaimer: This document has been prepared based on information provided by others as cited in the Notes section. Stantec has not verified the accuracy and/or completeness of this information and shall not be responsible for any errors or omissions which may be incorporated herein as a result. Stantec assumes no responsibility for data supplied in electronic format, and the recipient accepts full responsibility for verifying the accuracy and completeness of the data.



- Legend**
- Railroads
 - Minnesota Water Trails
 - Cedar Nicols Trailhead
 - Public Water Access Sites in Minnesota
 - Trailer Launch
 - Metro Region Trails/Bikeways
 - Trail Status
 - Planned
 - Existing
 - Project Area
 - Municipal Boundary
 - PLSS Boundary
 - Minnesota Valley National Wildlife Refuge
 - Metro Region Parks
 - MnDNR - Management Units
 - State Parks



Project Location: T27N, R23W, S18 Eagan, Dakota Co., MN
 Prepared by KJM on 2024-01-09

Client/Project: Met Council Environmental Services
 MCES 7031-9003 Siphon Outlet Improvements Project
 EAW
 173420091

Figure No. 5
 Title

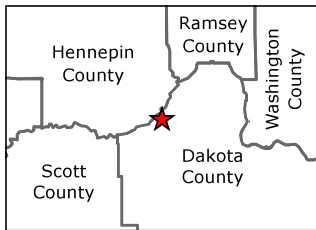
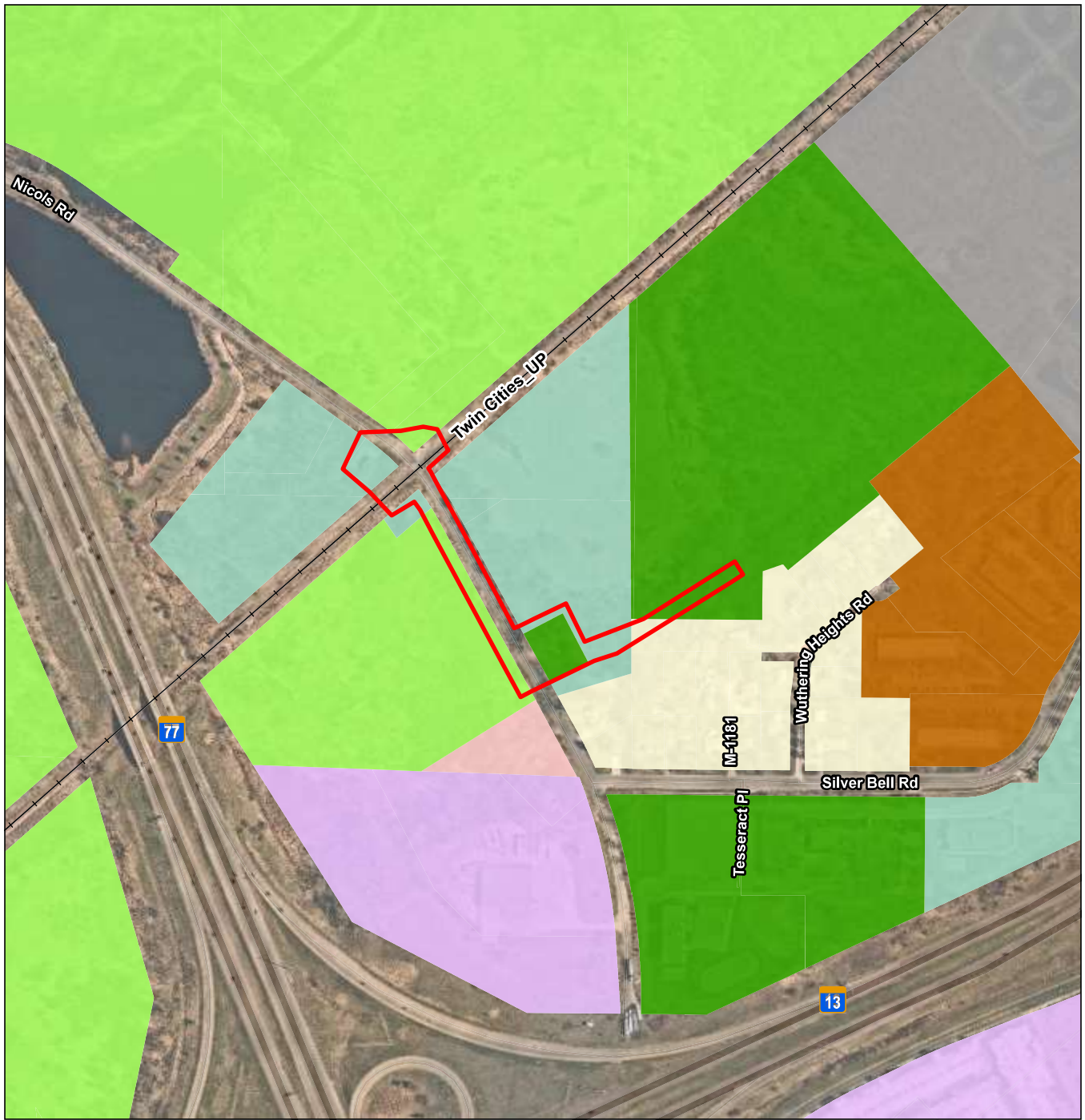
Parks, Trails, and other Recreational Areas

V:\3277\active\173420091\03_data\gis_cad\gis\proj\leaw\leaw.aprx Revised: 2024-01-09 By: kjmueller

Notes
 1. Coordinate System: NAD 1983 HARN Adj MN Dakota Feet
 2. Data Sources: Stantec, MnGeo, MnDNR, MnDOT, USGS
 3. Background: 2022 Dakota Co.

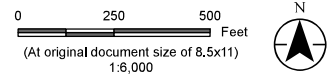
Disclaimer: This document has been prepared based on information provided by others as cited in the Notes section. Stantec has not verified the accuracy and/or completeness of this information and shall not be responsible for any errors or omissions which may be incorporated herein as a result. Stantec assumes no responsibility for data supplied in electronic format, and the recipient accepts full responsibility for verifying the accuracy and completeness of the data.

V:\2277\active\173420091\03_data\gis_cad\gis\pro\leaw\leaw.aprx Revised: 2024-01-09 By: kjmueller



Notes
 1. Coordinate System: NAD 1983 HARN Adj MN Dakota Feet
 2. Data Sources: Stantec, MnGeo, MnDOT, City of Eagan
 3. Background: 2022 Dakota Co.

- Legend**
- Project Area
 - City of Eagan Land Use Guide Plan 2040**
 - LD-Low Density
 - HD-High Density
 - O/S-Office/Service
 - BP-Business Park
 - IND-Limited Industrial
 - MU-Mixed Use
 - P-Parks, Open Space, Recreation
 - QP-Public/Quasi-Public

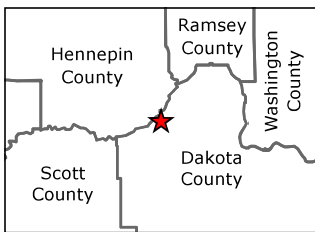
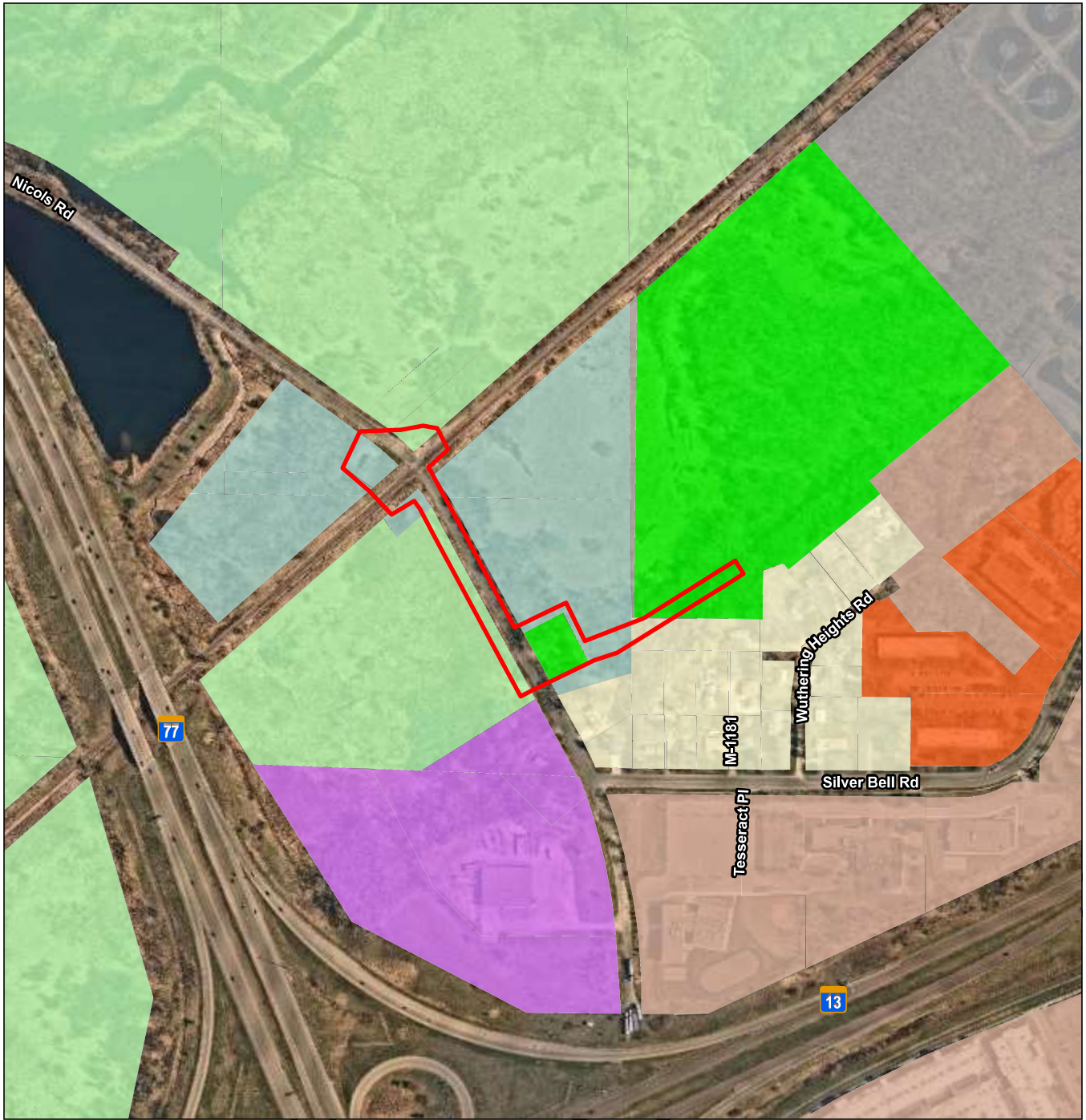


Project Location Prepared by KJM on 2024-01-09
 T27N, R23W, S18
 Eagan, Dakota Co., MN

Client/Project 173420091
 Met Council Environmental Services
 MCES 7031-9003 Siphon Outlet Improvements Project
 EAW

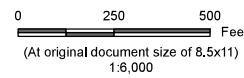
Figure No.
6
Title
Planned Land Use

V:\2277\active\173420091\03_data\gis_cad\gis\proj\leaw\leaw.aprx Revised: 2024-01-09 By: kjmueller



Notes
 1. Coordinate System: NAD 1983 HARN Adj MN Dakota Feet
 2. Data Sources: Stantec, MnGeo, MnDOT, City of Eagan
 3. Background: 2022 Dakota Co.

- Legend**
- Project Area
 - City of Eagan Zoning Designations**
 - R-1-Residential Single Family
 - R-4-Residential Multiple
 - BP-Business Park
 - I-1-Limited Industrial
 - P-Park
 - PF-Public Facility
 - PD-Planned Development
 - Cedar Grove District

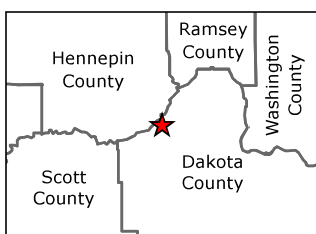
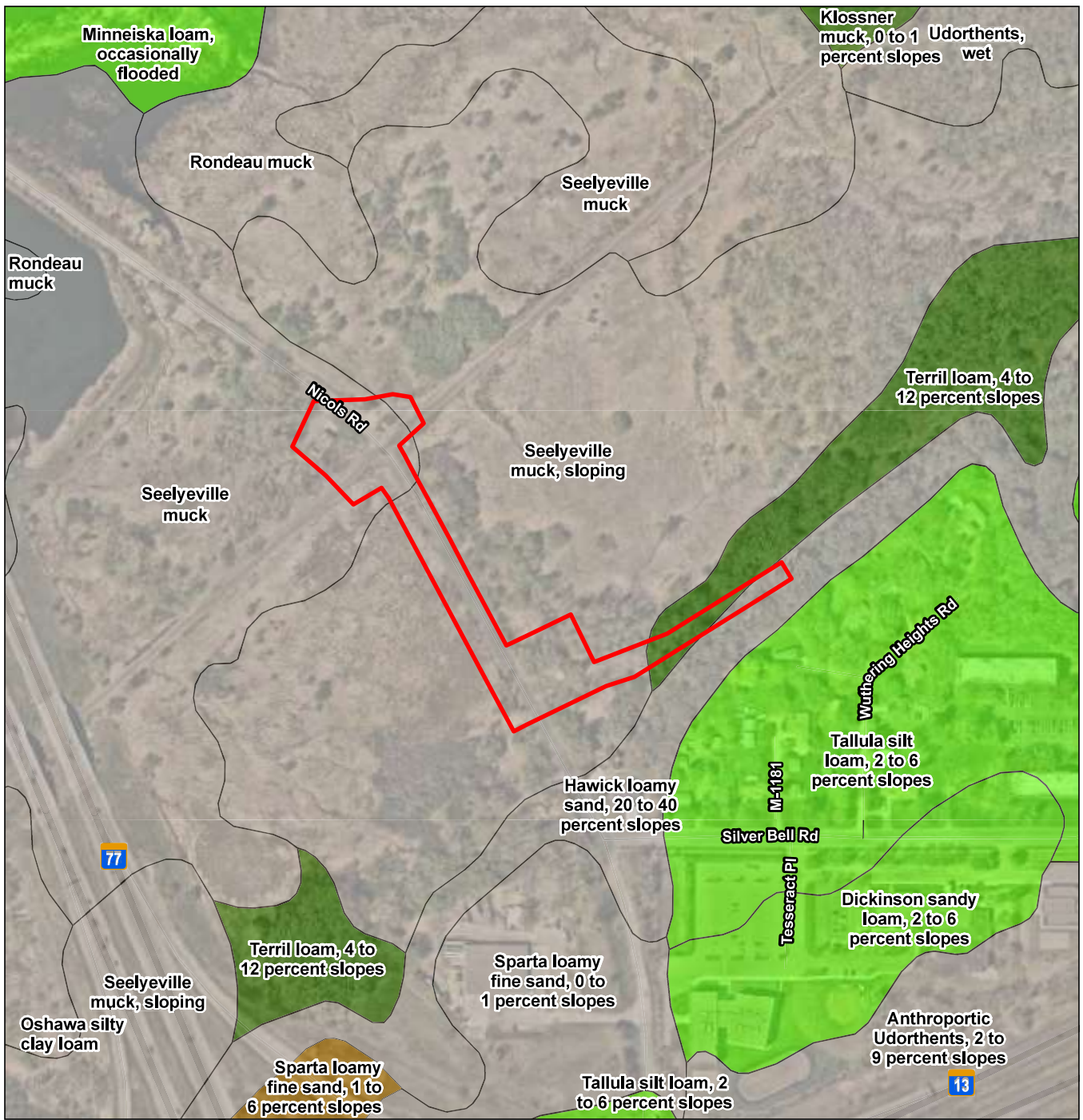


Project Location Prepared by KJM on 2024-01-09
 T27N, R23W, S18
 Eagan, Dakota Co., MN

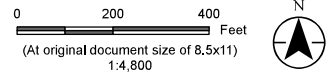
Client/Project 173420091
 Met Council Environmental Services
 MCES 7031-9003 Siphon Outlet Improvements Project
 EAW

Figure No.
 7

Title
Zoning



- Legend**
- Project Area
 - Farmland Class**
 - All areas are prime farmland
 - Farmland of statewide importance
 - Not prime farmland
 - Farmland of local importance



Project Location
T27N, R23W, S18
Eagan, Dakota Co., MN

Client/Project
Met Council Environmental Services
MCES 7031-9003 Siphon Outlet Improvements Project
EAW

Figure No.
8

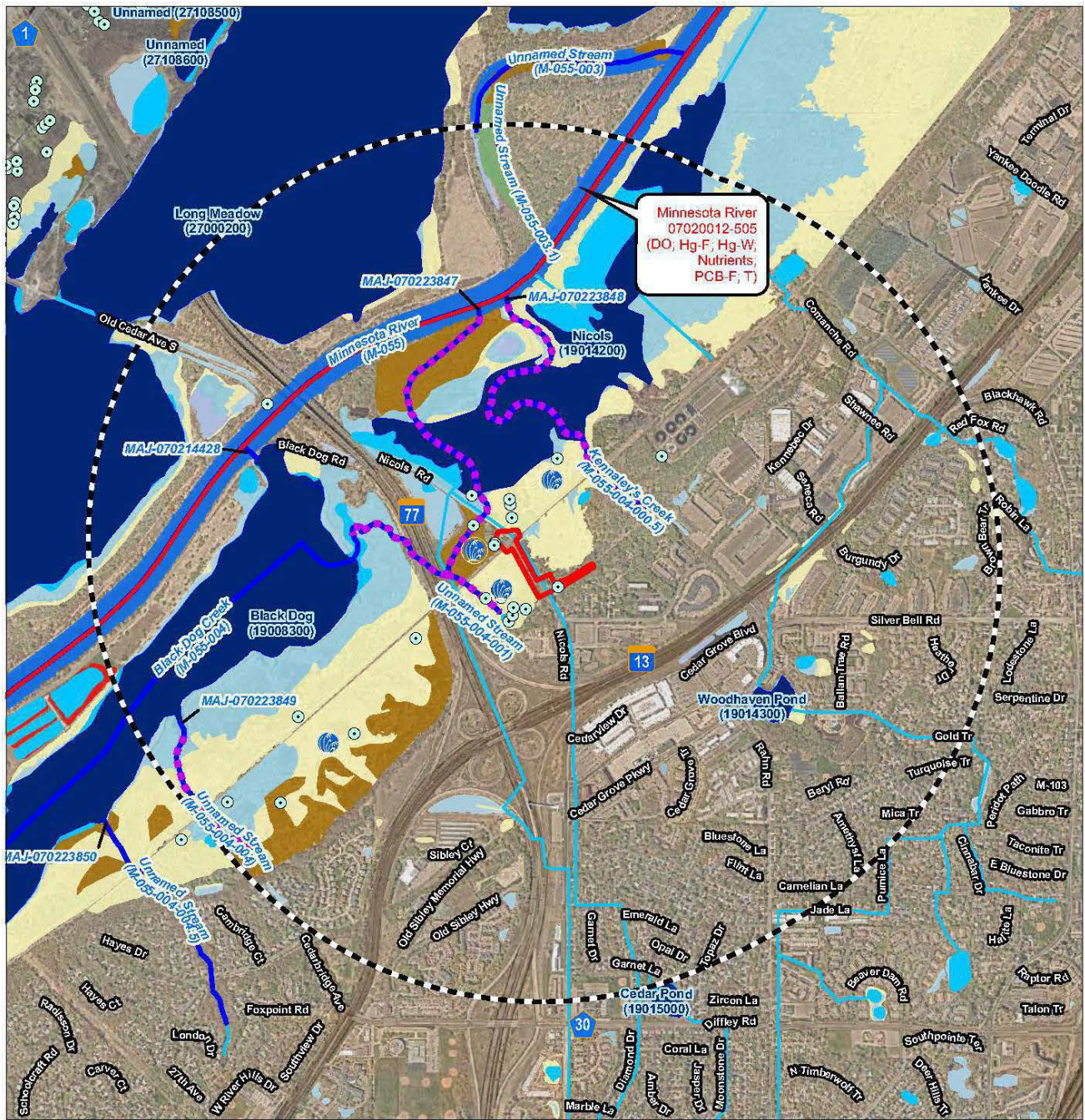
Title
Farmland and Soils Classification

Prepared by KJM on 2024-01-09
173420091

Notes

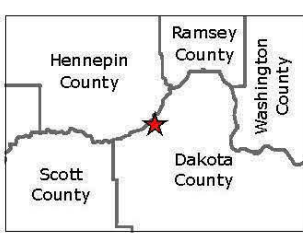
1. Coordinate System: NAD 1983 HARN Adj MN Dakota Feet
2. Data Sources: Stantec, MnGeo, MnDOT, NRCS
3. Background: 2021 Dakota Co.

V:\2277\active\173420091\03_data\gis_cad\gis\proj\leaw\leaw.aprx Revised: 2024-01-09 By: kjmueller

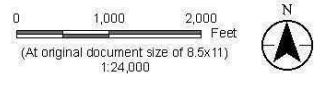


Minnesota River
07020012-505
(DO, Hg-F, Hg-W,
Nutrients,
PCB-F, T)

V:\2027\active\173420081\003_data\gis_cad\stc\prom\seaw\seaw.aprx Revised: 2024-01-09 By: kjm\keller



- Legend**
- 1 Mile Radius
 - Project Area
 - Calcareous Fen
 - Minnesota Springs
 - 2022 MPCA Impaired Streams (Draft)
 - Trout Streams Minnesota
 - Minnesota Public Waters Delineations
 - Public Water Watercourse
 - Public Ditch/Altered Natural Watercourse
 - Public Waters Basins
 - National Hydrography Dataset
 - NHD - Flowline
 - NHD - Waterbody
 - NWI Circular 39 Class
 - 1 - Seasonally Flooded Basin or Flat
 - 2 - Wet Meadow
 - 3 - Shallow Marsh
 - 4 - Deep Marsh
 - 5 - Shallow Open Water
 - 6 - Shrub Swamp
 - 7 - Wooded Swamp
 - 8 - Bog
 - Municipal and Industrial Activities
 - Riverine Systems



Project Location
T27N, R23W, S18
Eagan, Dakota Co., MN

Prepared by KJM on 2024-01-09

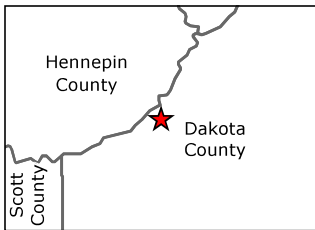
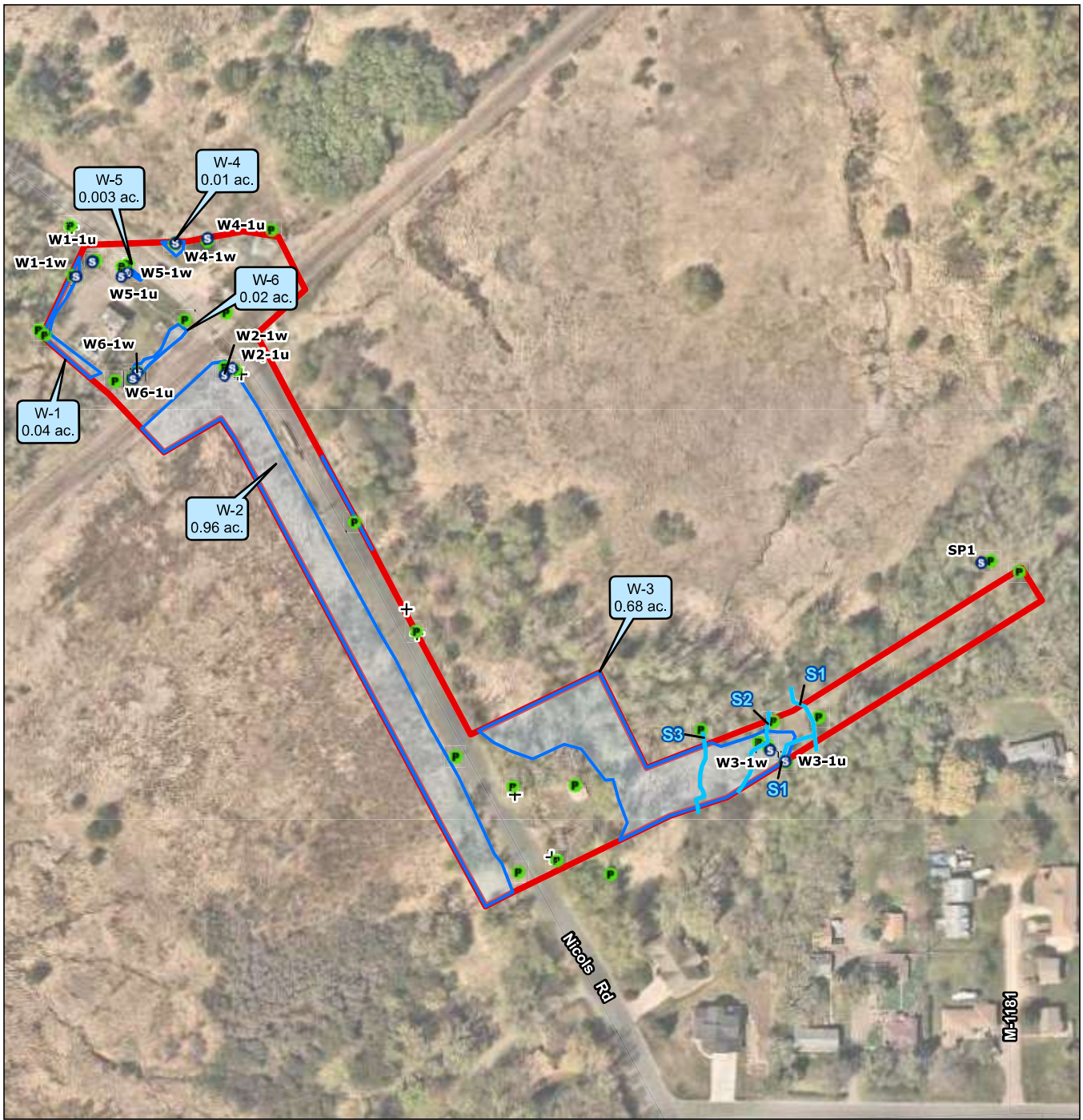
Client/Project
Met Council Environmental Services
MCE5 7031-9003 Siphon Outlet Improvements Project
EAW

173420081

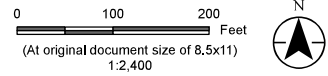
Figure No.
9

Title
Water Resources Map

Disclaimer: This document has been prepared based on information provided by others as cited in the Notes section. Stantec has not verified the accuracy and/or completeness of this information and shall not be responsible for any errors or omissions which may be incorporated herein as a result. Stantec assumes no responsibility for data supplied in electronic format, and the recipient accepts full responsibility for verifying the accuracy and completeness of the data.



- Legend**
- + Culvert
 - S Sample Point
 - P Photo Location
 - Linear Water Feature
 - Delineated Wetland Area
 - Study Area



Project Location: T27N, R23W, S18 Eagan, Dakota Co., MN
 Prepared by KJM on 2024-01-09

Client/Project: Met Council Environmental Services
 MCEs 7031-9003 Siphon Outlet Improvements Project
 EAW
 Figure No. 10

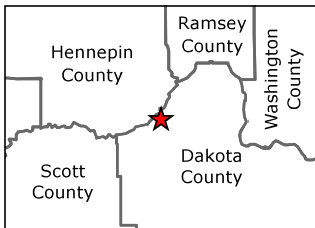
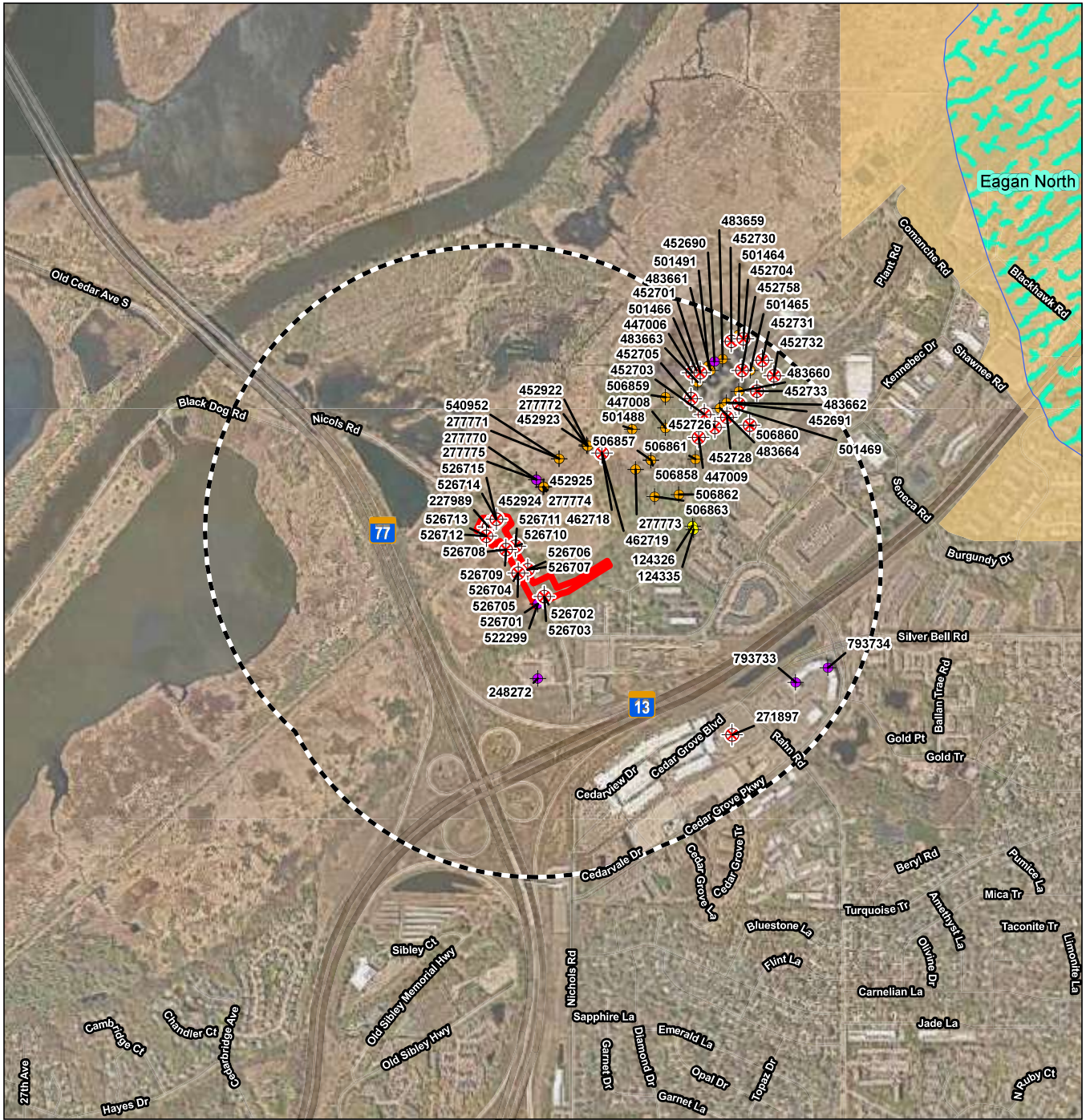
Title: **Delineated Aquatic Resources**

Notes
 1. Coordinate System: NAD 1983 HARN Adj MN Dakota Feet
 2. Data Sources: Stantec
 3. Background: 2021 Dakota Co

V:\2277\active\173420081\03_data\gis_cad\gis\proj\leaw\leaw.aprx Revised: 2024-01-09 By: kjmueller

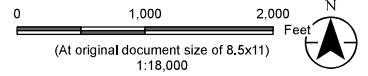
Disclaimer: This document has been prepared based on information provided by others as cited in the Notes section. Stantec has not verified the accuracy and/or completeness of this information and shall not be responsible for any errors or omissions which may be incorporated herein as a result. Stantec assumes no responsibility for data supplied in electronic format, and the recipient accepts full responsibility for verifying the accuracy and completeness of the data.

V:\3277\active\173420091\03_data\gis_cad\gis\proj\leaw\leaw.aprx Revised: 2024-01-09 By: kjmueller



Notes
 1. Coordinate System: NAD 1983 HARN Adj MN Dakota Feet
 2. Data Sources: Stantec, MnGeo, MnDOT, MDA, MGS
 3. Background: 2021 Dakota Co.

- Legend**
- Project Area
 - 1/2 Mile Radius
 - Field Verified Well**
 - + Domestic Well
 - + Monitoring Well
 - + Other Well
 - ⊗ Sealed Well
 - Wellhead Protection Areas
 - Drinking Water Supply Management Area Vulnerability
 - High



Stantec

Project Location
 T27N, R23W, S18
 Eagan, Dakota Co., MN

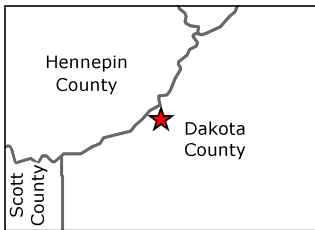
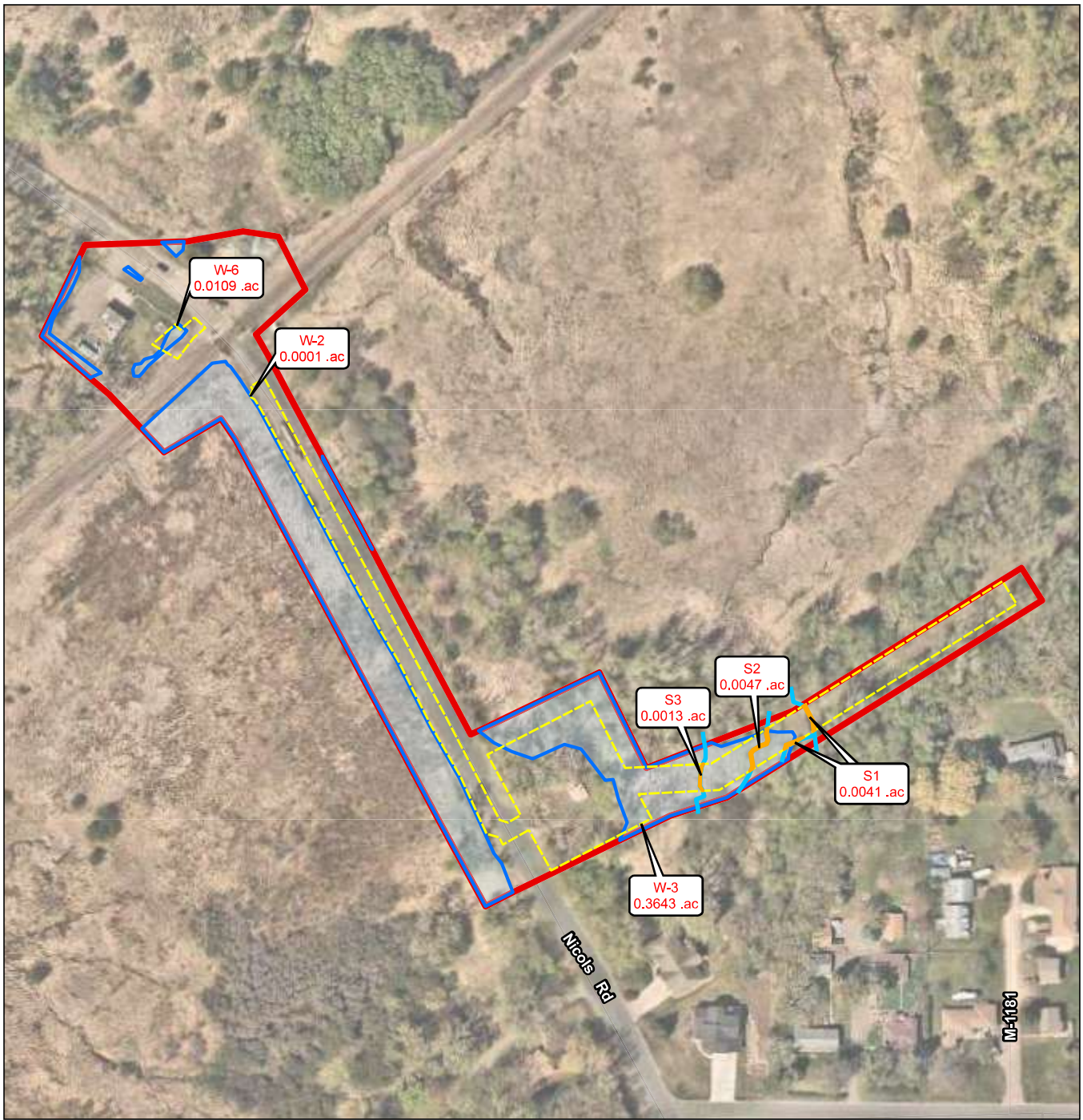
Client/Project
 Met Council Environmental Services
 MCES 7031-9003 Siphon Outlet Improvements Project
 EAW

Figure No.
11

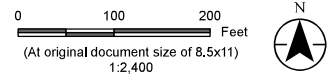
Title
Minnesota Well Index Map

Prepared by KJM on 2024-01-09
173420091

Disclaimer: This document has been prepared based on information provided by others as cited in the Notes section. Stantec has not verified the accuracy and/or completeness of this information and shall not be responsible for any errors or omissions which may be incorporated herein as a result. Stantec assumes no responsibility for data supplied in electronic format, and the recipient accepts full responsibility for verifying the accuracy and completeness of the data.



- Legend**
- Linear Water Feature
 - Potential Linear Water Feature Impacts
 - Potential Wetland Delineation Area
 - Impacts
 - Limits of Disturbance
 - Delineated Wetland Area
 - Study Area



Project Location: T27N, R23W, S18 Eagan, Dakota Co., MN
 Prepared by KJM on 2024-01-09

Client/Project: Met Council Environmental Services
 MCEs 7031-9003 Siphon Outlet Improvements Project
 EAW
 Figure No. 173420091

12
 Title
Potential Wetland Impacts

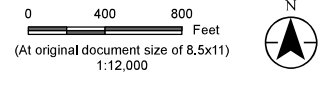
Notes
 1. Coordinate System: NAD 1983 HARN Adj MN Dakota Feet
 2. Data Sources: Stantec
 3. Background: 2021 Dakota Co



- Legend**
- Project Area
 - 1/2 Mile Radius
- MPCA Sites**
- Program Name**
- Multiple Programs
 - Hazardous Waste
 - Investigation and Cleanup
 - Stormwater
 - ▲ Tanks
 - ▲ Water Quality

Notes

1. Coordinate System: NAD 1983 HARN Adj MN Dakota Feet
2. Data Sources: Stantec, MnGeo, MnDOT, MPCA
3. Background: 2021 Dakota Co.



Project Location
T27N, R23W, S18
Eagan, Dakota Co., MN

Client/Project
Met Council Environmental Services
MCEs 7031-9003 Siphon Outlet Improvements Project
EAW

Figure No.
13

Title
MPCA WIMN Potentially Contaminated Sites

Prepared by KJM on 2024-01-09

173420091

V:\2277\active\173420091\03_data\gis_cad\gis\proj\leaw\leaw.aprx Revised: 2024-01-09 By: kjmueller

Disclaimer: This document has been prepared based on information provided by others as cited in the Notes section. Stantec has not verified the accuracy and/or completeness of this information and shall not be responsible for any errors or omissions which may be incorporated herein as a result. Stantec assumes no responsibility for data supplied in electronic format, and the recipient accepts full responsibility for verifying the accuracy and completeness of the data.