



# Shorewood/Excelsior Lift Station 20 Project MCES Project 802856



**Public Meeting  
July 20, 2022, 6:00pm  
Excelsior City Hall**

# Today's Presenters



**Dan Fick**



**Tom Melody**



**Morgan Dawley**

# Meeting Purpose

## Presentation (20 minutes)

- Summarize the project purpose and construction locations
- Explain the construction schedule
- Discuss potential impacts during construction

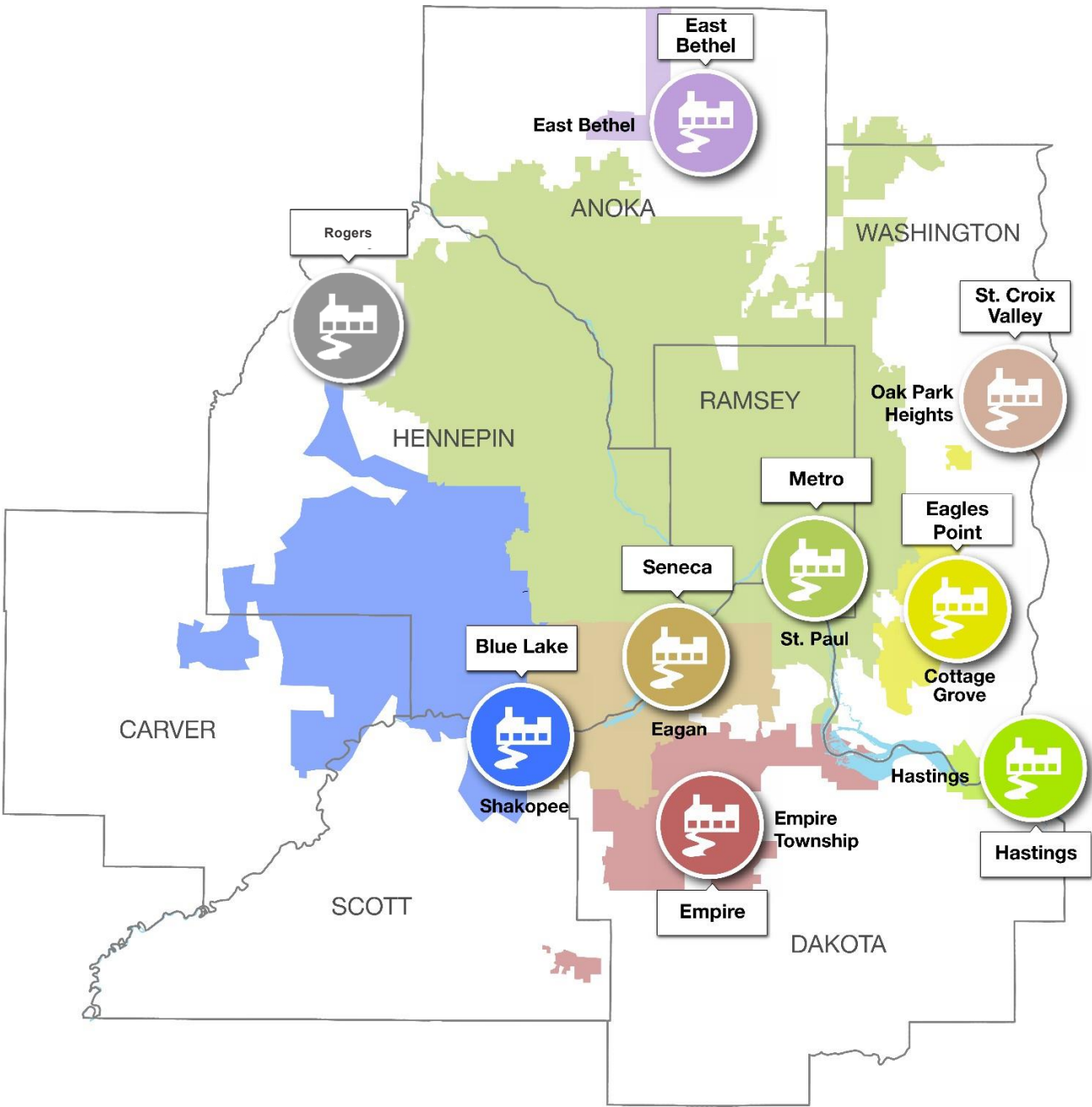
## Tabletop Q and A

- Explain the construction in greater detail on the layouts
- Answer your questions



# Service Area and Facilities

## Wastewater Treatment Plant Locations



We serve ~50% of Minnesota's population

### WHO WE SERVE

- 7- county Twin Cities Metro Area
- 110 communities
- 3,000 square miles
- 2,700,000+ people

### OUR FACILITIES

- 9 wastewater treatment plants
- 640 miles of interceptors
- 61 lift stations (pumping stations)
- 250 million gallons per day (average)

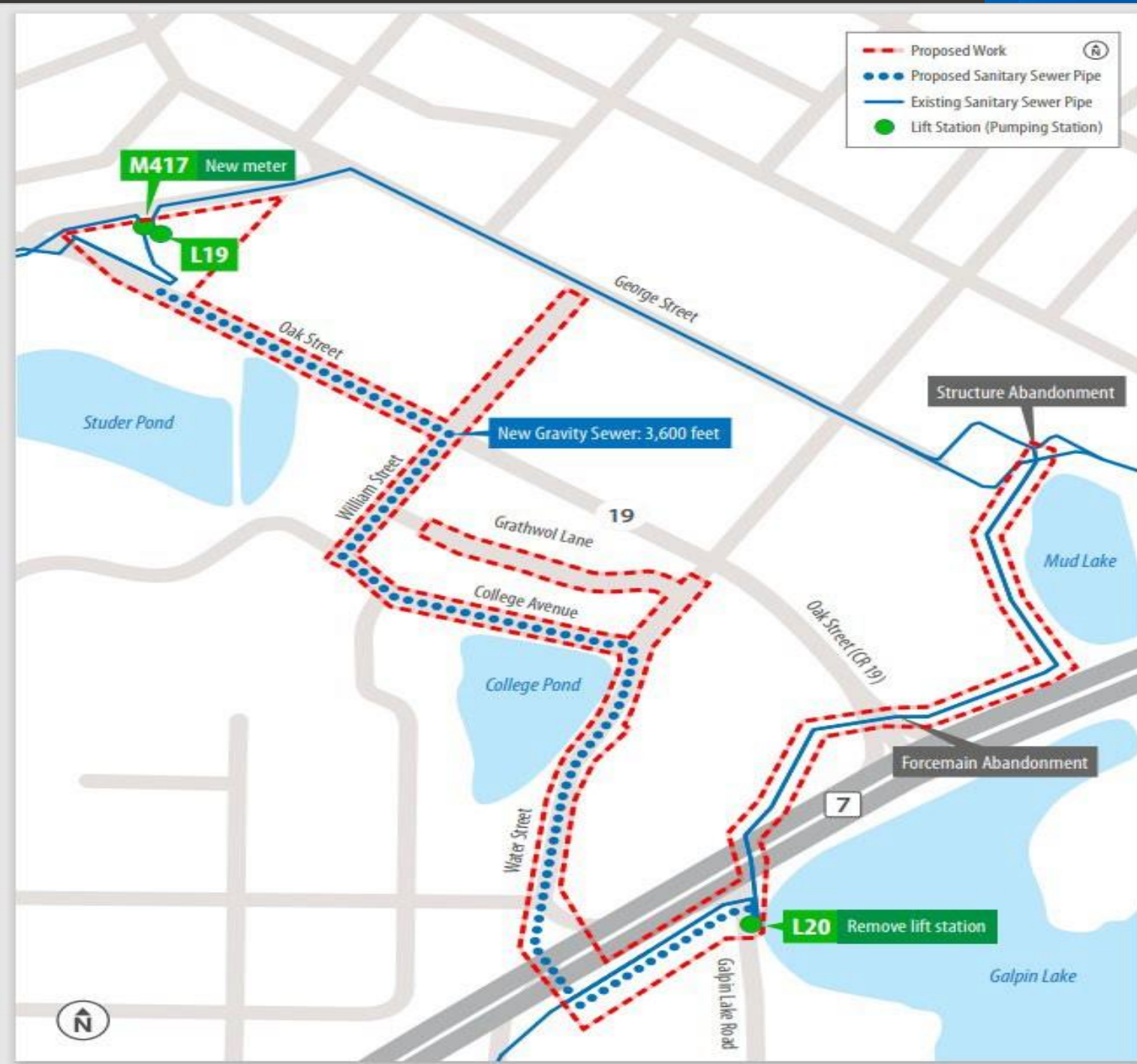
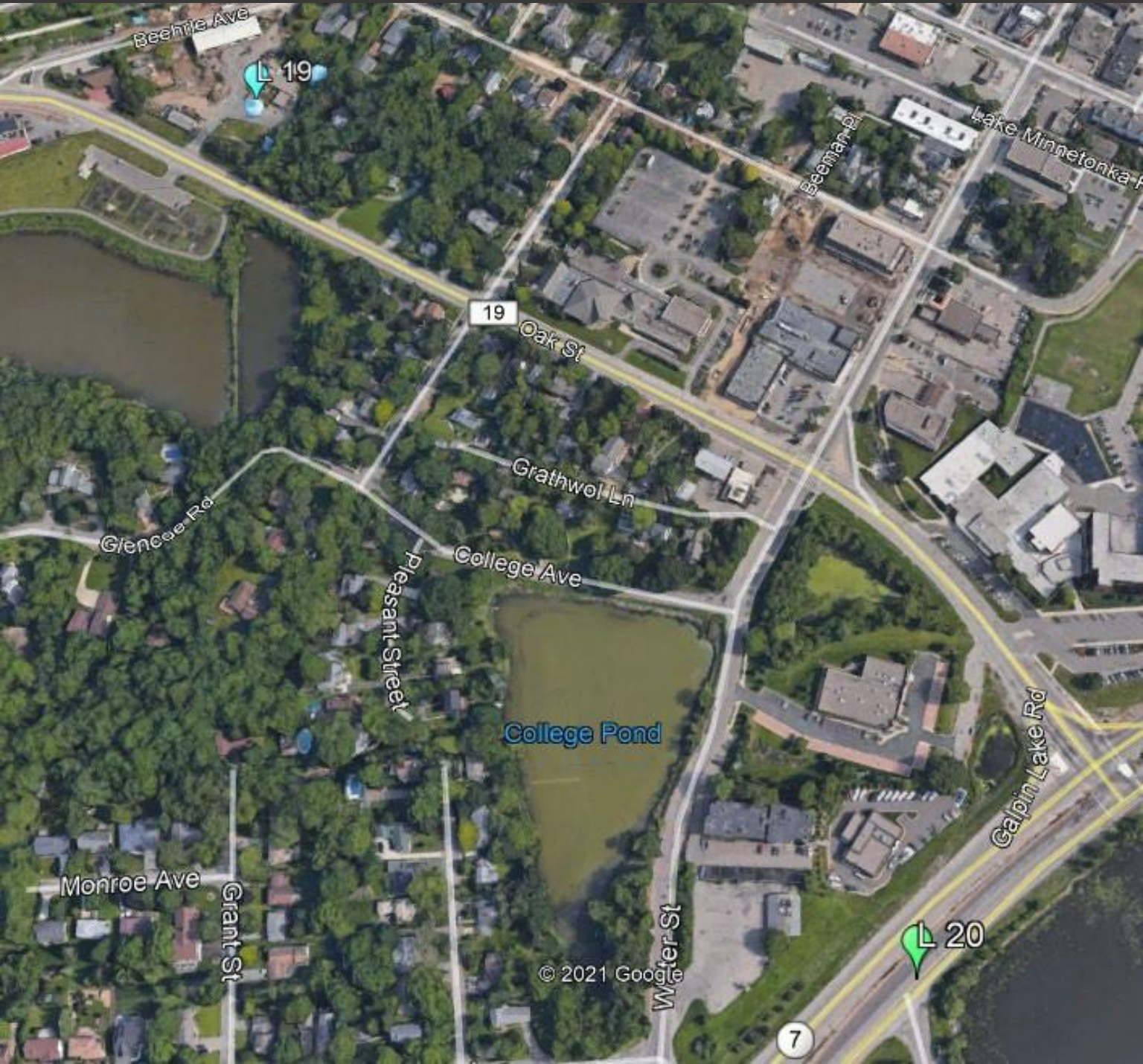
# Terms We Will Be Using

- **MCES:** Metropolitan Council Environmental Services
- **Wastewater Sewer System:** A system of underground pipes that carries wastewater (or sewage) away from buildings. Cities operate their own local wastewater sewer systems within a community. MCES operates the regional wastewater sewer system that carries wastewater from city systems to our treatment plants, similar to how a freeway system carries regional traffic.
- **Interceptor Sewers:** A system of underground pipes that carries wastewater (or sewage) from local community wastewater sewer systems to regional treatment plants.
- **Lift Station:** Pump station that assists the movement of wastewater in the interceptor system by gravity or pressure.
- **Meter Station:** Station that records the flow-rate of wastewater in the interceptor system. These can be located at a Lift Station or in a stand-alone structure.
- **Abandonment:** Permanent decommissioning of an unused pipe by disconnecting it from the system and filling it with sand or concrete.

# Project Purpose

- Metropolitan Council Environmental Services (MCES), in partnership with the City of Excelsior, is constructing a new regional gravity sewer pipe between sewer lift stations (pumping stations) L19 and L20.
- Work will also include decommissioning the old lift station L20 and its forcemain pipe, replacing Excelsior's flow meter M417, and improvements to City utilities and streets.
- By eliminating a lift station, the project will reduce operating costs, improve energy efficiency, and make the regional sewer system more reliable. This helps MCES continue to protect public health, economic growth, and improve water quality while providing low-cost sewer service to serve the region.

# Project Location



# Project Highlights

- **Oak Street**
  - Maintain two-way traffic during daytime hours
  - Anticipated night work at Oak / William intersection 7:00pm-7:30am
  - Reduced to one lane
- **College Avenue**
  - Pedestrian walking path on one side
  - Tree preservation
- **Water Street**
  - Landscaping to reduce headlight glare
  - Pedestrian walking path on one side
- **Highway 7**
  - Sanitary sewer crossing (tunnel)

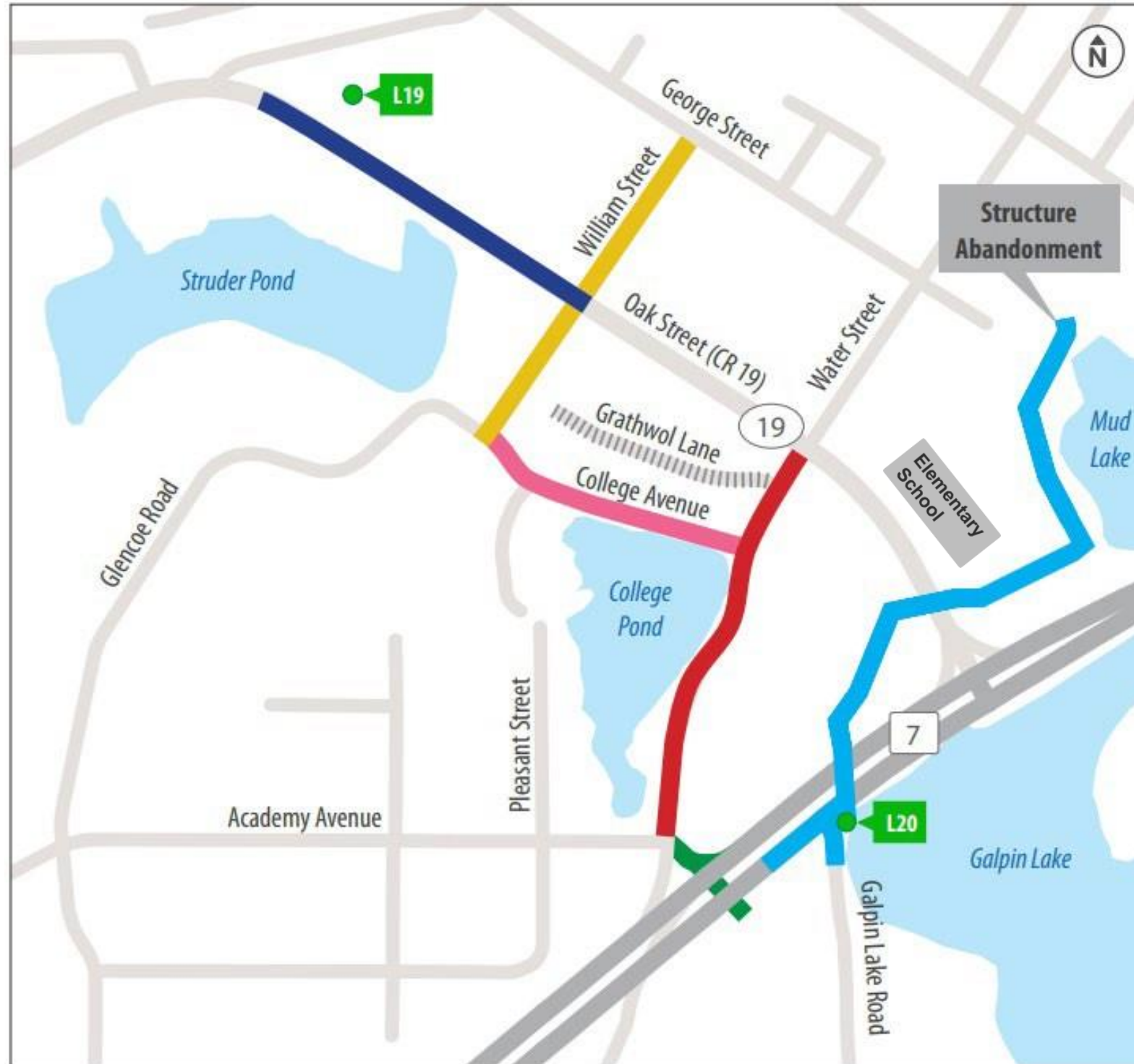




# Construction



# Construction Locations



## Work Zones:

Phase 1 2023  
Phase 2 2023

Phase 3 2023  
Phase 4 2023 - 2024

Phase 5 2024  
Phase 6 2024

Grathwol Paving 2023 or 2024

Lift Station (Pumping Station)

# What to Expect During Construction

## Construction process

1. Remove roadway surface
2. Underground utility construction
3. Roadway grading and paving

## Construction impacts

- Except for Oak Street, access in and out of driveways will be restricted during 7:30am to 7:00pm while work is occurring
- Anticipate temporary mailboxes during construction
- Contractor will gather residential garbage bins for garbage hauler
- Alternative on-street parking areas

- *If you have specific access needs, please let us know*

# Construction Map – Phase 1 (2023)

**Construction zone:** Oak Street between William Street and Beehrle Avenue

- Two-way traffic will be maintained on Oak Street from 7:30 am to 7:00pm
- Anticipated night work for a limited time at Oak Street and William Street intersection from 7:00pm-7:30am
  - Reduced to one lane on Oak



# Construction Map – Phase 2 (2023)

**Construction zone:** William Street north and south of Oak Street

- Does not include the intersection of William Street and Oak Street
- Road will be closed to through traffic
  - Open to residential driveways during off hours only



# Construction Map – Phase 3 (2023)

**Construction zones:** College Ave between William Street and Water Street and Grathwol Lane.

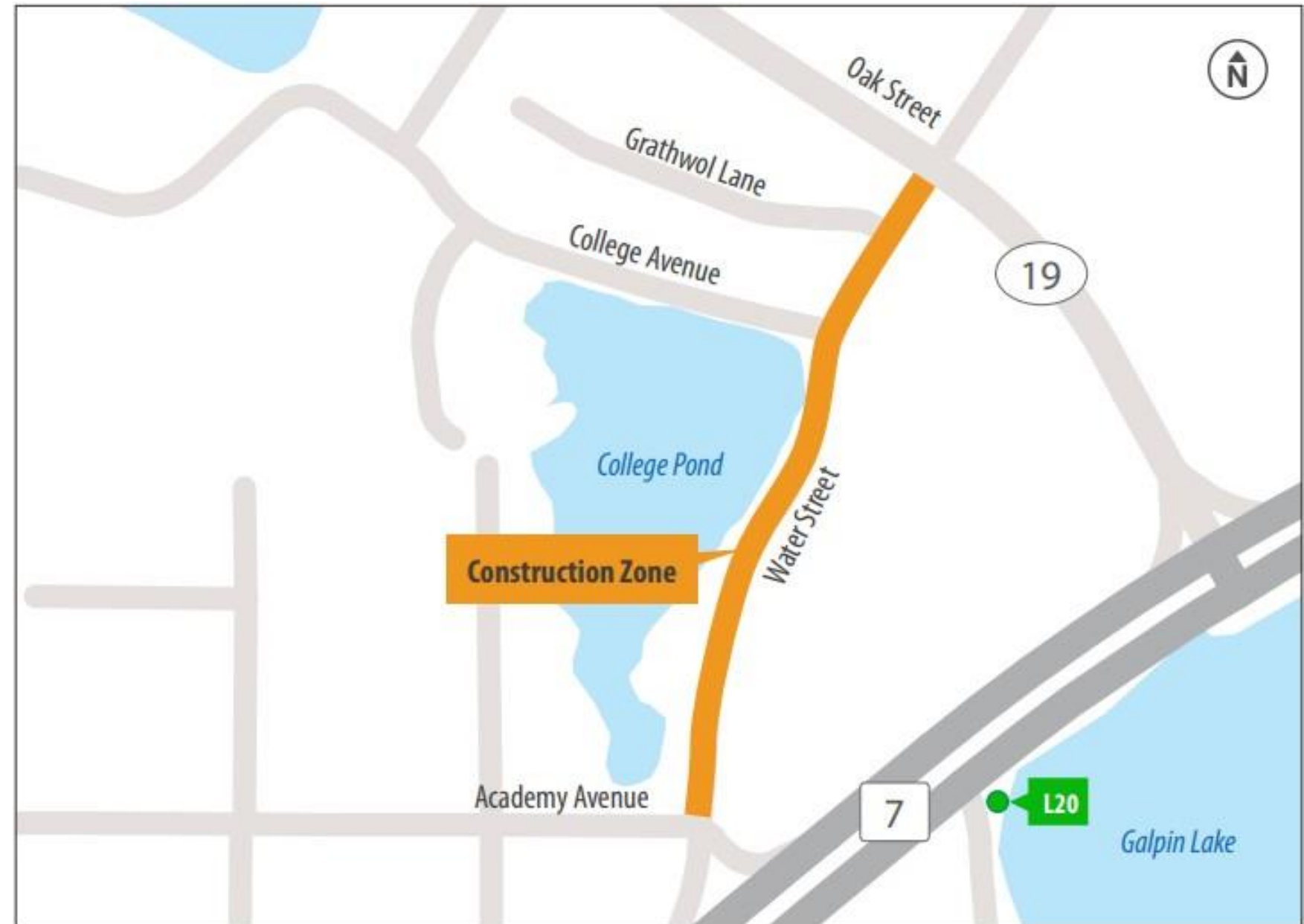
- Grathwol Lane will be closed during pavement removal and replacement only.
- College Avenue will be closed to through traffic
  - Open to residential driveways during off hours only



# Construction Map – Phase 4 (2023 – 2024)

**Construction zone:** Water Street between Academy Avenue and Oak Street

- Road will be closed to through traffic



# Construction Map – Phase 5 (2024)

**Construction zone:** Right on/off lane on north and southbound Highway 7

- Road will be closed to through traffic

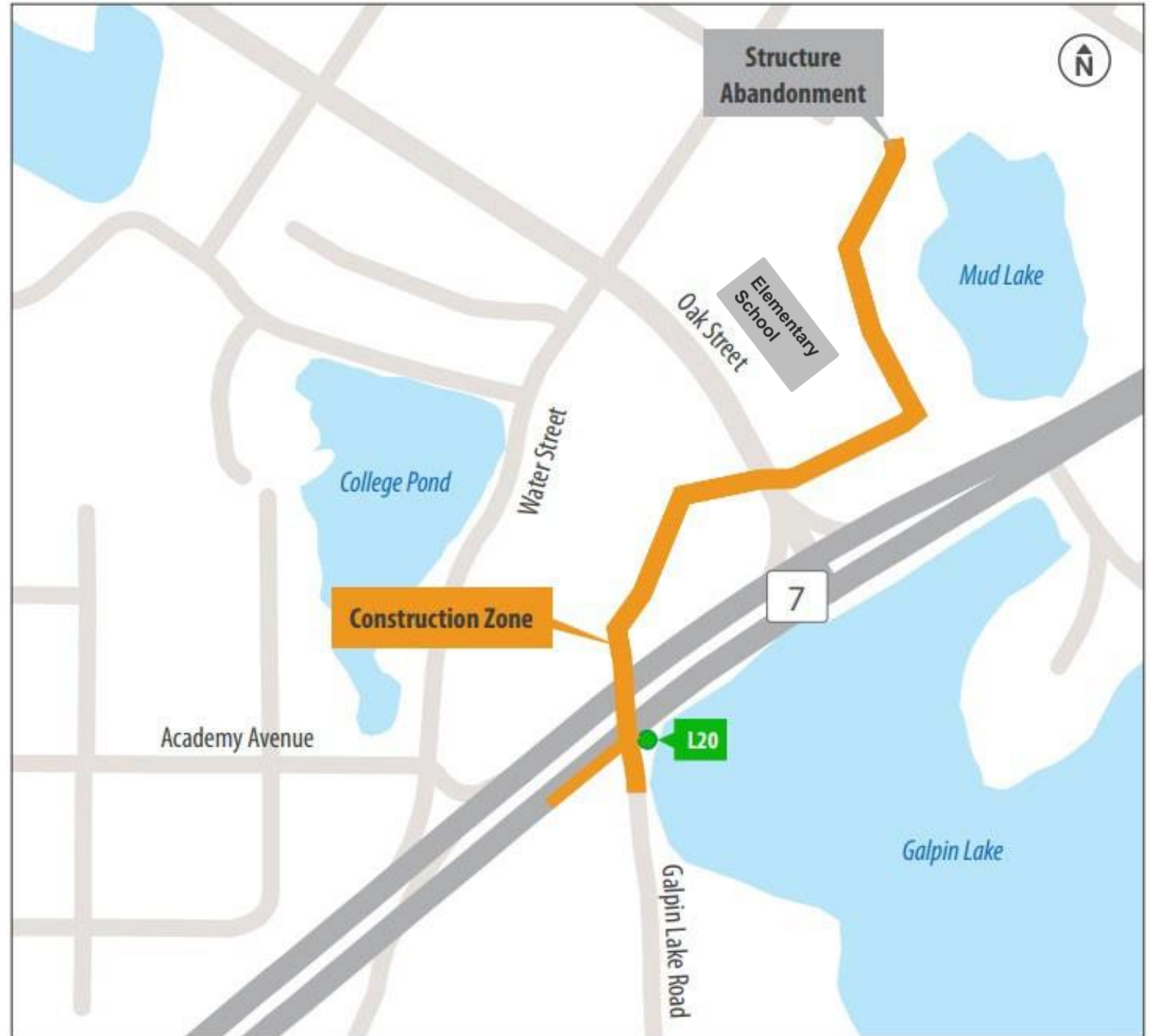




# Construction Map – Phase 6 (2024)

**Construction zone:** Galpin Lake Road, Highway 7 and Excelsior Elementary School.

- Galpin Lake Road at Highway 7 will be closed to through traffic
- Highway 7 right turn lane to Galpin Lake Road will be closed
- Work at Excelsior Elementary School will occur between June 15<sup>th</sup> and August 15<sup>th</sup>



# Project Schedule

**We are Here**

Open house

Anticipated project finish

**July 2022**

**Spring 2025**



**Fall 2022**

**2023**

**2024**

Bidding

Anticipated work

- Oak Street
- William Street
- College Ave
- Water Street

Anticipated work

- Water Street
- Grathwol Lane (2023 or 2024)
- Hwy 7
- Galpin Lake Road
- Excelsior Elementary School

Construction schedules are subject to change based on weather or other unforeseen circumstances

# Stay Informed

Email: [excelsiorl20project@wsbeng.com](mailto:excelsiorl20project@wsbeng.com)

Hotline: (952) 737-4681

Online: [metro council.org/sewerconstruction/ExcelsiorL20](http://metro council.org/sewerconstruction/ExcelsiorL20)

**Thank you for participating  
in our Open House**



# Tabletop Q and A

