

Welcome!

# Fridley Lift Station Virtual Public Meeting

November 10, 2020

The meeting will start at 7:00 p.m. Music is playing.  
If you do not hear music, please check your audio settings.



# Fridley Lift Station (L32A)

**Virtual Public Meeting:** November 10, 2020

Tim O'Donnell, Project Citizen Liaison/Sr. Info. Coordinator

Tim Wedin, Assistant Manager, Interceptor Engineering

Wastewater Planning & Capital Project Delivery

Metropolitan Council Environmental Services



# Introductions

- **Tim O'Donnell**  
*Metropolitan Council Environmental Services (MCES)*  
*Project Citizen Liaison/Sr. Info. Coordinator*
- **Tim Wedin**  
*MCES Assistant Manager*  
Interceptor Engineering
- **Jeny Baroda**  
*MCES Principal Engineer*  
Interceptor Engineering
- **Ashley Osteraas**  
Zan Associates (MCES Project Communications)
- **Angela Klein**  
Zan Associates (MCES Project Communications)

# Agenda

Welcome and introductions

---

## Presentation

About MCES

---

Project Need

---

Work Completed to Date

---

Work Activities Currently Underway

---

Proposed Facility Improvements for Fridley and Brooklyn Park Sites

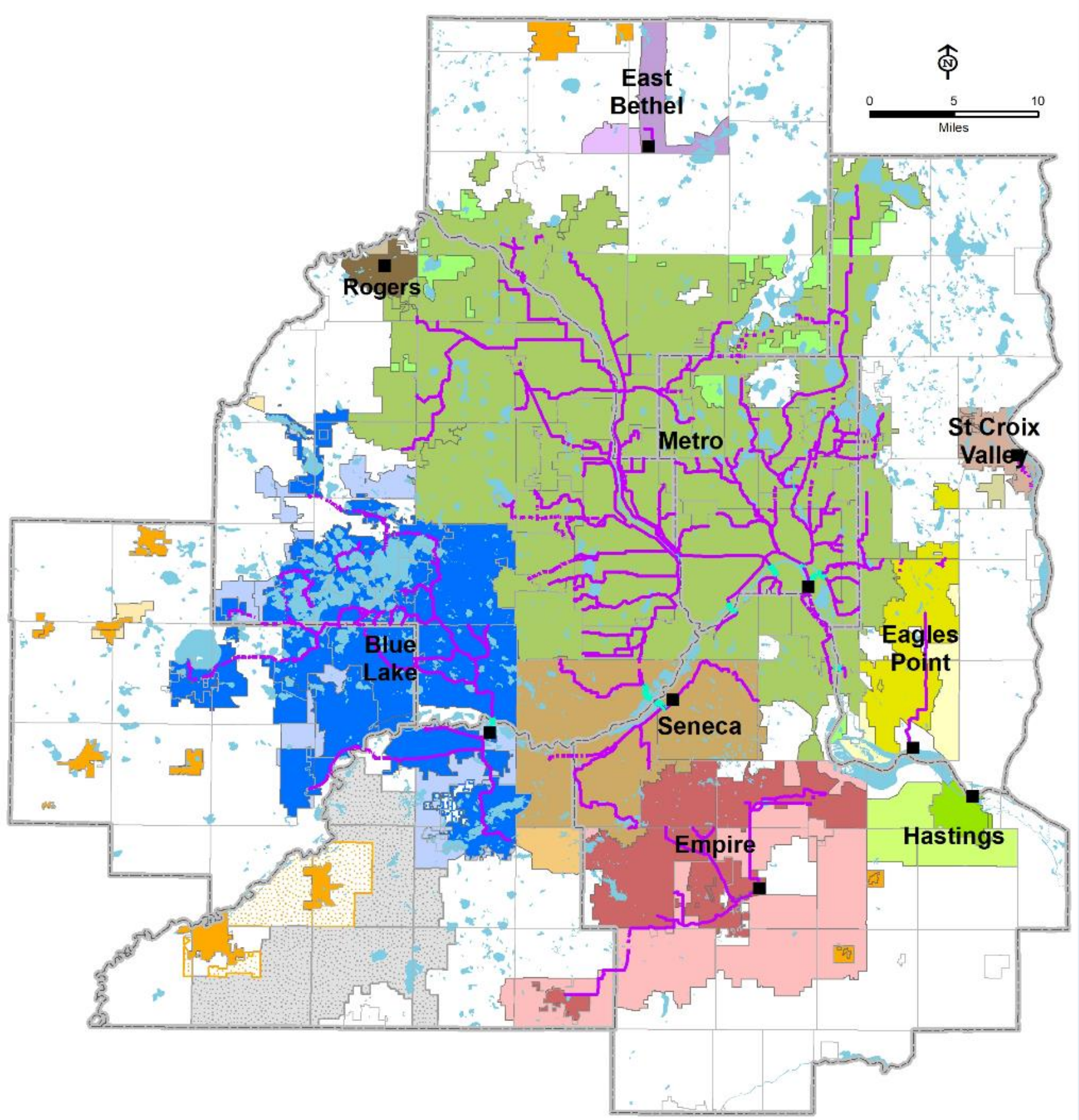
---

Outreach/Facility Plan Schedule

---

Questions and answers

# Metropolitan Council Environmental Services



Protects public health and safety



Protects the environment



Fosters the economic growth of the region

## WHO WE SERVE

7-county Twin Cities Metro Area  
110 communities  
2,700,000+ people

## OUR FACILITIES

9 wastewater treatment plants  
640 miles of interceptors  
\$7 billion in valued assets

## OUR ORGANIZATION

600+ employees  
250 million gallons per day (avg)  
\$150 million / year capital program

# Project Location

- Existing Lift Station L32
  - Located in Brooklyn Park at 7700 Mississippi Lane North
- Proposed Lift Station L32A
  - 6900 E River Road in Fridley, on MCES property which previously was the site of Camp Lockeslea
  - Located across the Mississippi River from the existing lift station



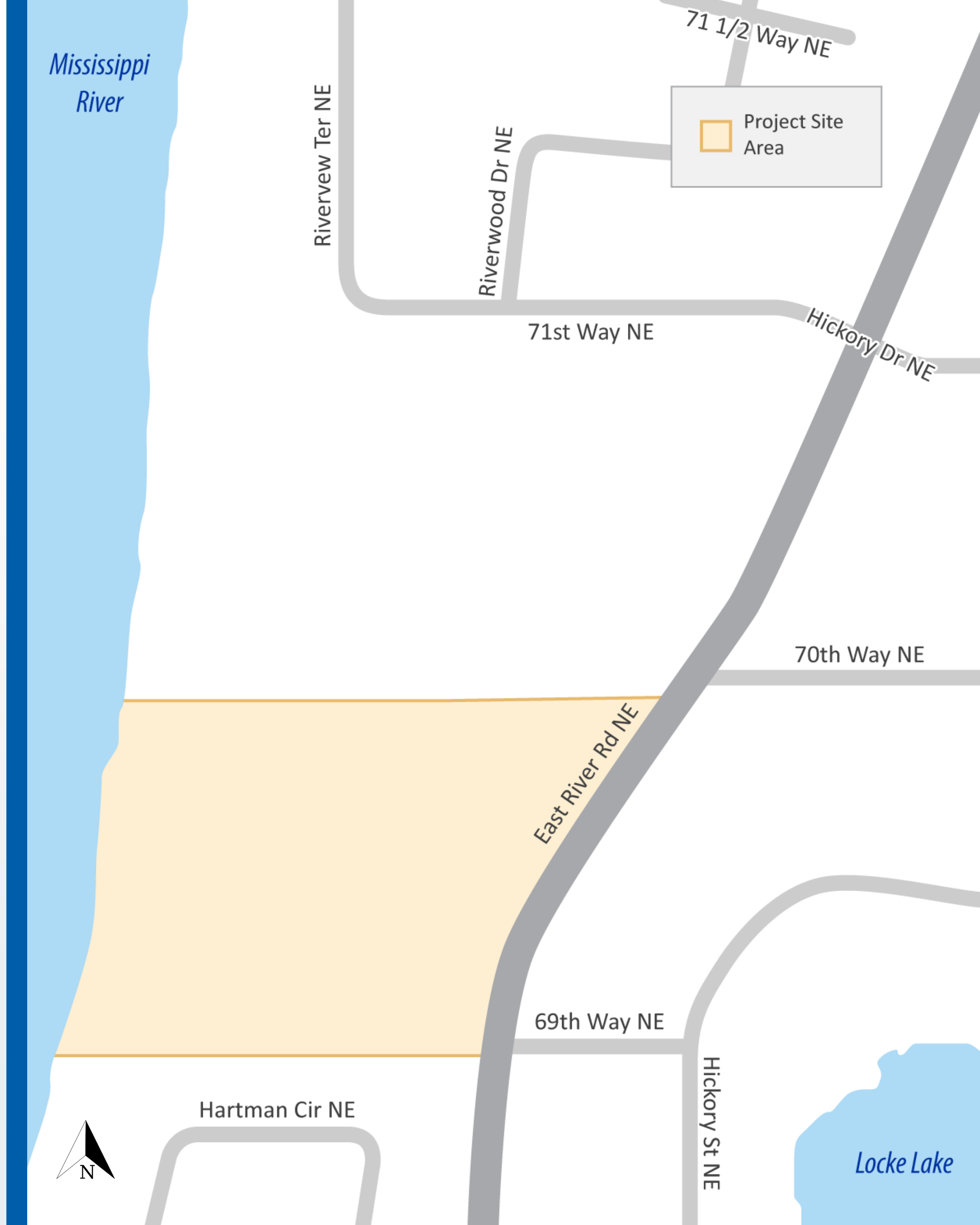
# Existing Conditions

- L32 (Brooklyn Park) is 50 years old
- Components such as the structure, piping, and controls show signs of deterioration, requiring replacement
- Failures at the lift station have resulted in back-ups of wastewater into neighboring homes
- There are odor complaints due to inability to address air flow at the current facility
- Lift station is almost at full capacity with the existing flow conditions



# Drivers for New Facility

- The existing lift station is 50 years old and has reached the end of its useful life.
  - Condition assessments have documented structural mechanical, and electrical deficiencies.
  - Deficiencies have led to system failures resulting in back up of wastewater into homes which has caused damage to private property.
  - Deficiencies have also resulted in odor issues.
- The existing lift station L32 conveys most of the flow from the northwest metropolitan area.
  - L32 does not have sufficient capacity to serve the current and future needs of the area.





# Activities Completed to Date



Upstream and downstream system modeling



Pump concept design



Odor control study



Siphon study



Storage study



Archeological Phase I and Phase II study



Site survey and tree survey



Geotechnical report



Wetland delineation

# Current Work Activities

- Girl scout lease
  - Girl Scout River Valley requested lease termination effective October 1, 2020
- Development of documents for demolition contract
  - Demolition of existing buildings
  - Repair of existing fence
  - Installation of gates
  - Placement of “No Trespassing” signs

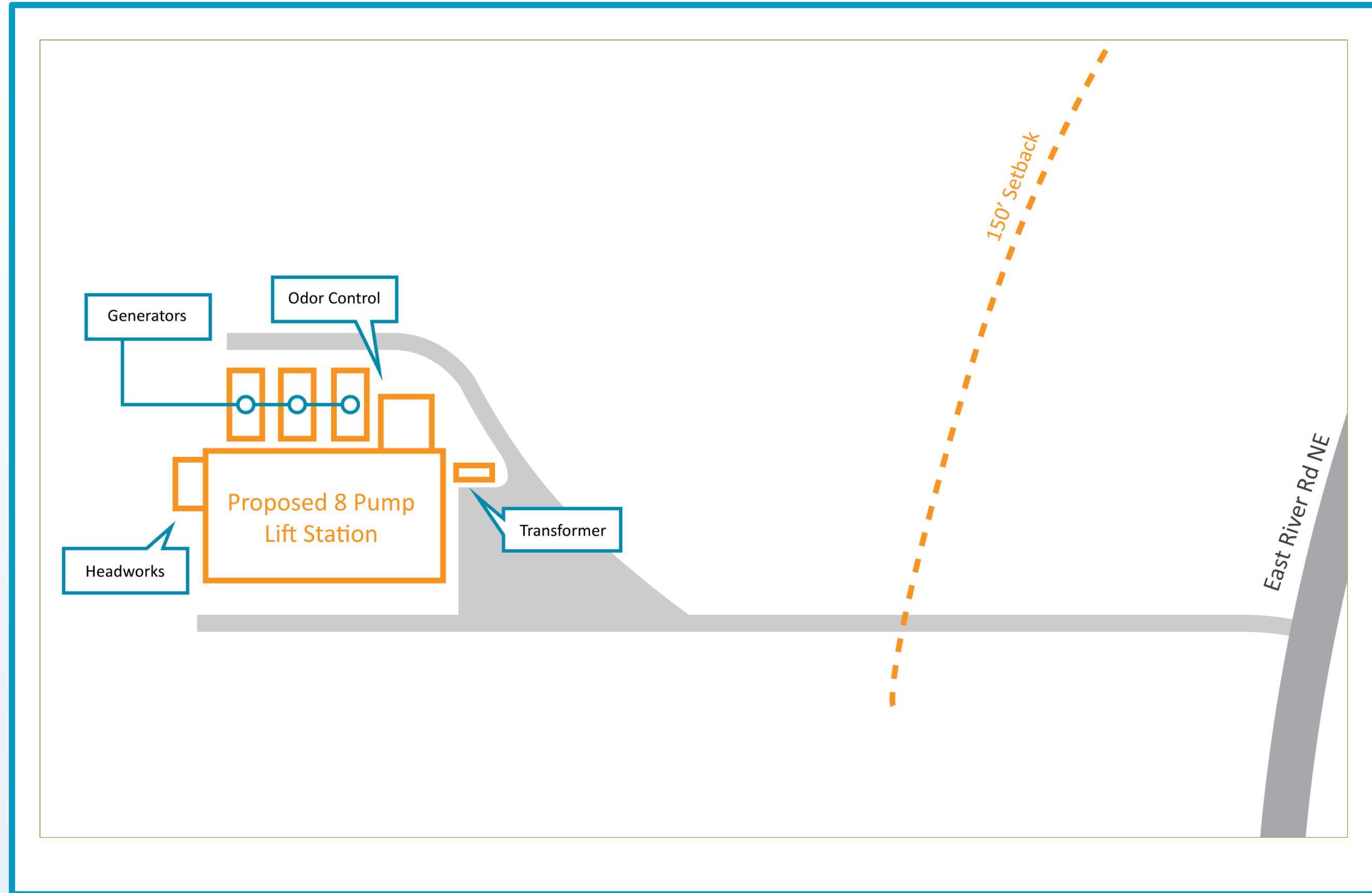


# New Fridley Lift Station

- Features being incorporated into the new lift station design
  - Improved resiliency
  - Odor control
  - Structure sized to handle increasing flows due to regional growth
    - 48 Million gallons per day 20-year flow design
    - 67 Million gallons per day ultimate flow design



# Conceptual Plan for Fridley Site

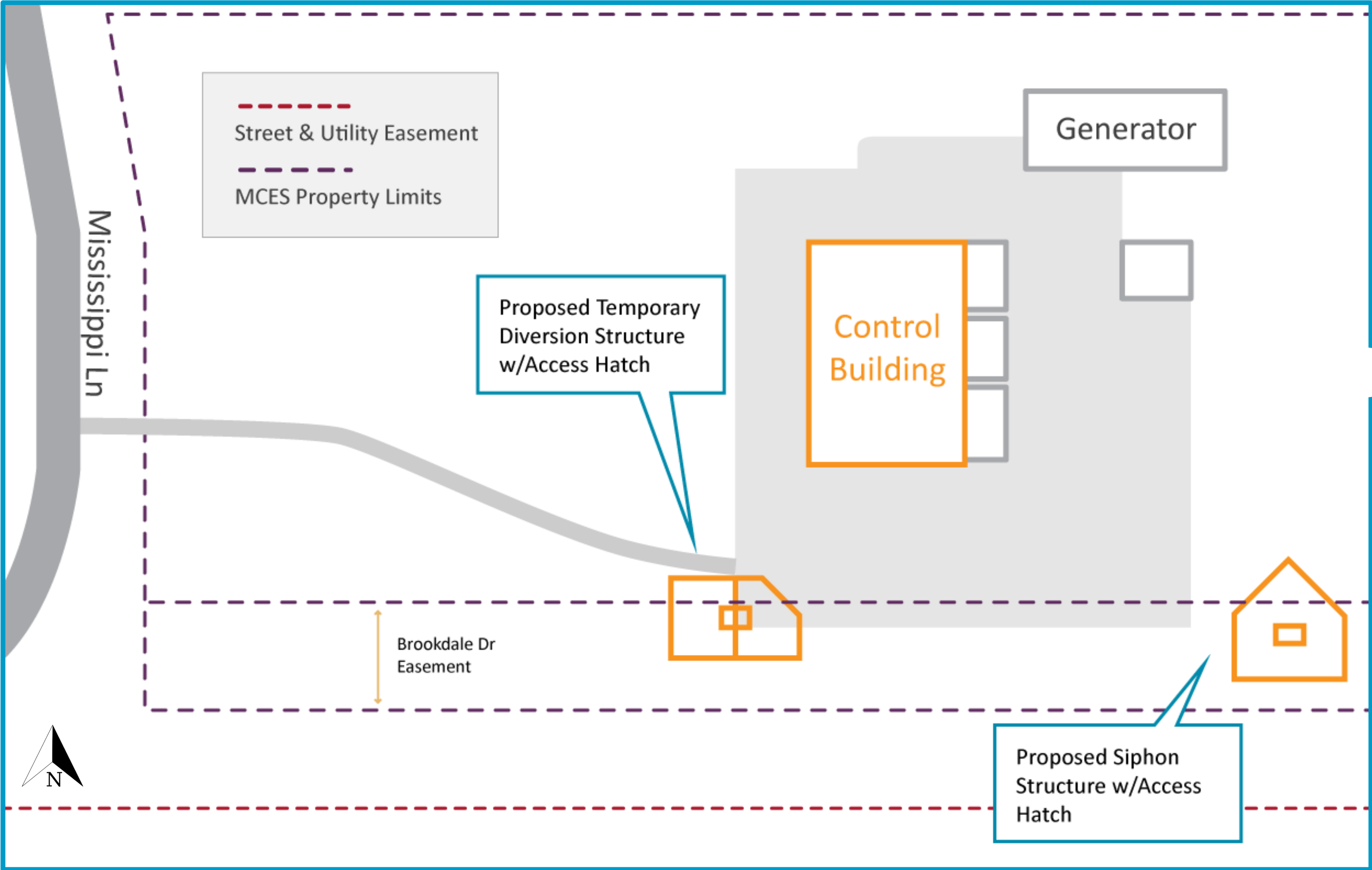


# Brooklyn Park Site



- Remaining facilities on existing site
  - Control structures for the siphons
  - Odor control facilities

# Conceptual Plan for Brooklyn Park Site



# Key Dates




## Facility Plan Schedule

Fall 2020

 Facility Plan Development

November 10, 2020

 Virtual Open House

December 17, 2020

 Virtual Public Hearing



## Project Schedule

Early 2021


 Final Facility Plan

2021

 Design

2022

2023

 Construction

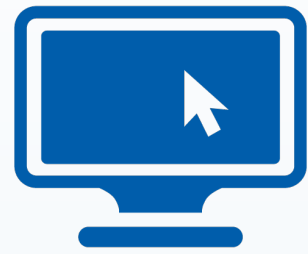
2026

# Estimated costs and funding

- Project costs
  - Budgeted \$35M construction cost
  - Paid for through existing municipal and industrial wastewater rates.
- Project funding
  - Loan from the Minnesota Public Facilities Authority
  - Below market-rate loans used to fund eligible projects which helps keep wastewater rates low



# Project Contacts



## Website

[Metrocouncil.org/sewerconstruction/fridley](https://Metrocouncil.org/sewerconstruction/fridley)



## Phone

(763) 520-8650



## Email

[info@fridleyarealiftstation.com](mailto:info@fridleyarealiftstation.com)

Visit our project website for more information and to sign up to receive our project email updates.