

Lake Elmo West Connection

Open House



May 2024 | LakeElmoWConnection.com

Welcome!

Project Communications

Share questions and comments

Email:
comment@LakeElmoWConnection.com

Call the Project Hotline:
(651) 302-3314

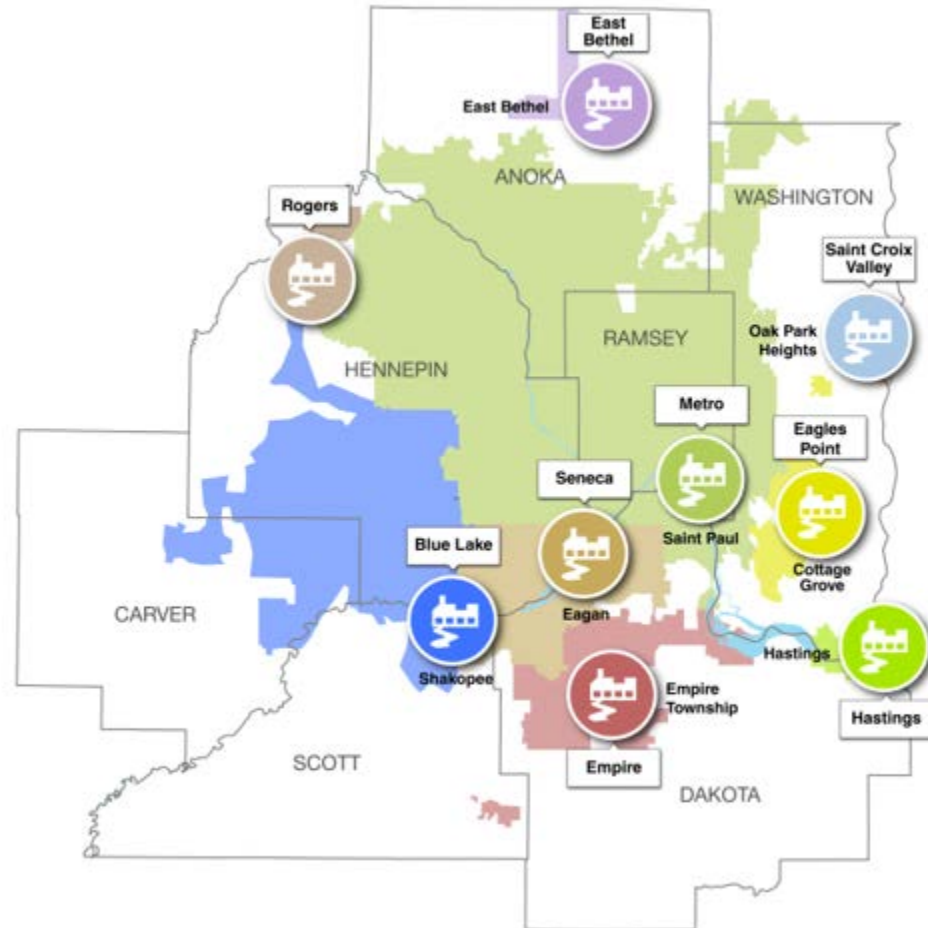
Sign up for construction updates
on the project Website!

LakeElmoWConnection.com



Service Area & Facilities

Wastewater Treatment Plant Locations and Service Areas



Who We Serve:

- 7-County Twin Cities Metro Area
- 111 Communities
- 3,000 Square Miles
- 2,700,000+ People

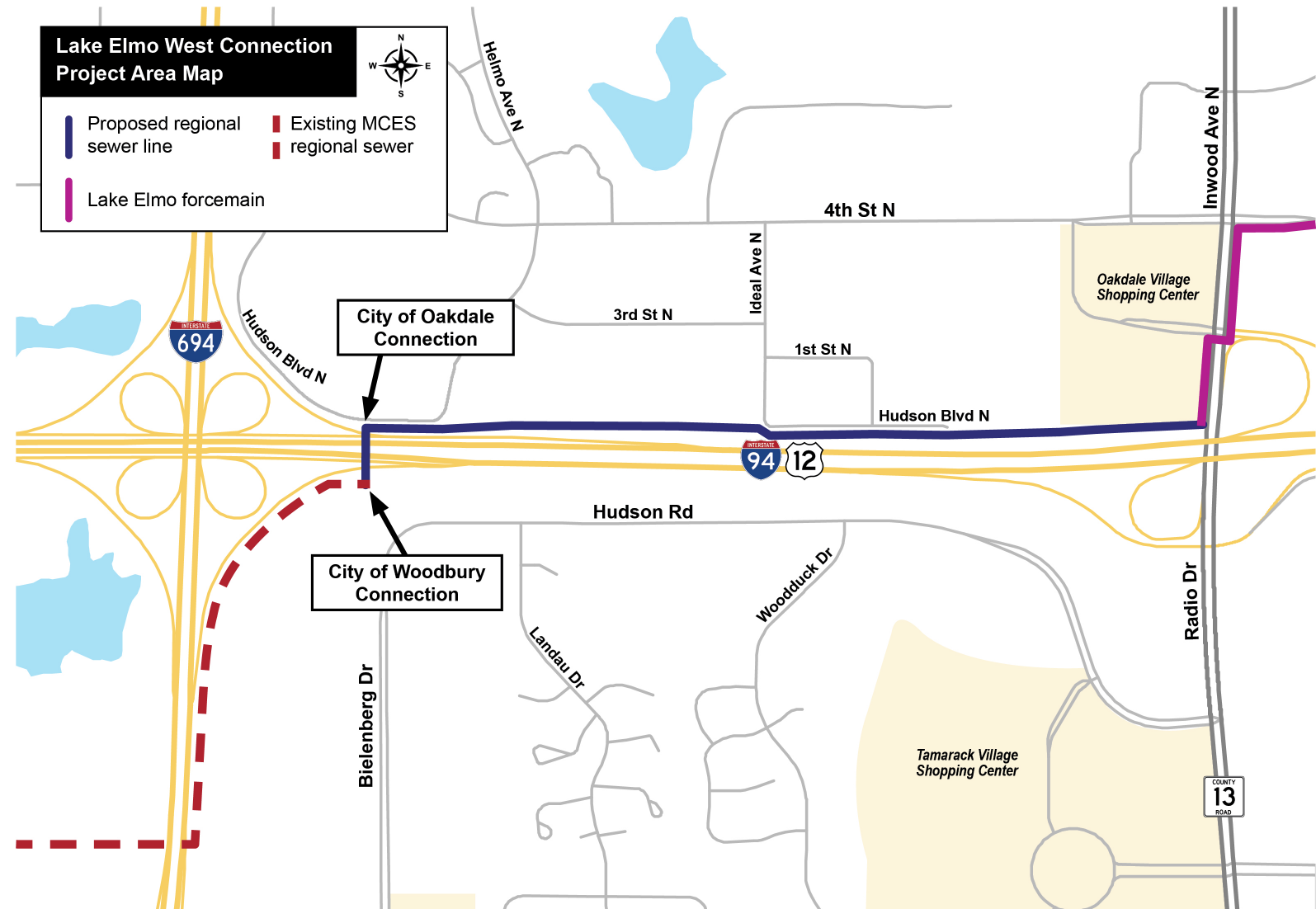
Our Facilities:

- 9 Wastewater Treatment Plants
- 640 Miles of Interceptors
- 61 Lift Stations
- 250 Million Gallons Per Day (Average)

We serve ~50% of Minnesota's population!

Project Scope

- Site: North side of I-94 between I-694 and Inwood Avenue in Oakdale and crossing I-94 to Woodbury near Bielenberg Drive.
- Installation of a new regional sewer on the north side of I-94 between I-694 and Inwood Avenue and adding a new sewer crossing under I-94 just east of the I-494/I-694 interchange.



Project Need & Benefit

Issues:

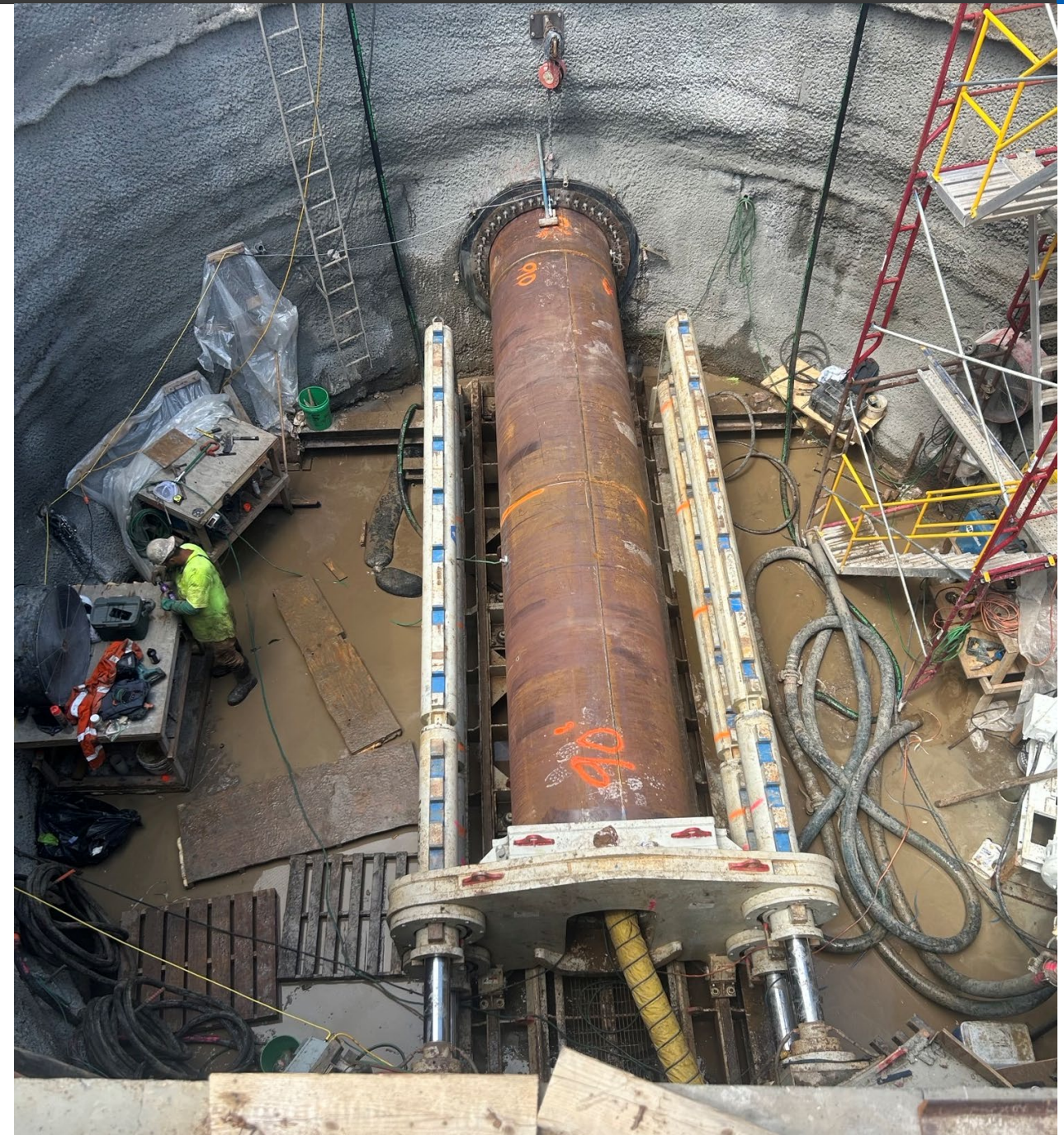
- Current sewer system is nearing capacity
- Currently no MCES interceptor directly serving Lake Elmo

Benefits:

- This project will extend regional sewer service to western Lake Elmo. This is the first step of a broader program to improve sewer capacity of the 1-WO-500 system downstream to facilitate development and redevelopment in Oakdale, Lake Elmo, and Woodbury.

Construction Process

- Site Preparation
- Installing Pits
- Tunnels
 - Pipes will be 18-40ft Deep
- Open Cut
 - Pipes will be 18-40ft Deep
- Restoration
- Monitoring



Construction Impacts

- Reduced parking
 - Business and Home access will always maintained
- Temporary traffic closures
- Disturbed turf and pavement
 - Parking lots and roadways
 - Areas will be restored
- Tunneling and Open Cut Replacement Process:
 - Micro tunneling

Anticipated Construction Timeline*

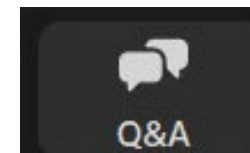
Timeline

- Spring of 2024 through Summer of 2026
 - As project progresses visit the project website for updates

**All dates are weather dependent and subject to change.*

Questions

How to Participate in Q&A:



Use the Q&A function to type in questions and comments



Select the reactions button to use the raise hand function to be unmuted and speak aloud



Thank you

Stay Informed!

Share questions and comments

Email: comment@LakeElmoWConnection.com

Call the Project Hotline: (651) 302-3314

Sign up for construction updates on the project Website!

LakeElmoWConnection.com

