

|| PROGRESS PHOTOS



FBI2 Windbox Inspection



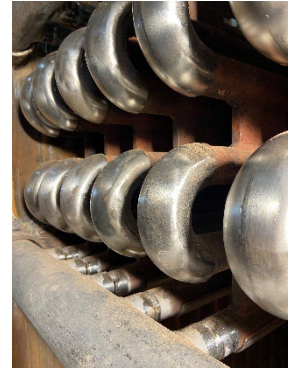
New FBI2 Air Distribution System



New FBI2 Cake Pump Valve



New BH2 Stainless Steel Liner



New WHB2 Superheater

|| RECENT COMPLETED WORK

- The Contractor completed the Incinerator No. 2 shutdown. The work on FBI 2 included:
 - Replaced incinerator feed port knife gate valves.
 - Tied-in cake piping to new cake pump distribution piping for pumps 855/858.
 - Renewed the incinerator air distribution system and made refractory repairs.
 - Replaced superheaters and evaporator harps.
 - Installed stainless liner in the baghouse.
 - Installed new oxygen meter.
- Contractor replaced control panel for existing emulsion polymer system
- Contractor completed checkout, startup, and commissioning of the sludge storage mixing improvements.

|| UPCOMING WORK

- Contractor will install second auxiliary condenser including new effluent piping, effluent control valves, and steam and condensate piping.
- The contractor will be installing structural steel platforms for bridge crane walkways and oxygen meters.
- Contractor is working on performance testing, training, and operations and maintenance manuals of the new ash and lime conveyance piping in the tunnels, 408 and SMB.
- The Contractor will be starting Incinerator No. 3 shutdown September 28, 2022. The work on FBI 3 will include:
 - Replace incinerator feed port knife gate valves.
 - Tie-in cake piping to new cake pump distribution piping for pumps 855/858.
 - Renew the incinerator air distribution system.
 - Replace superheaters and evaporator harps.
 - Install stainless liner in the baghouse.
 - Install new oxygen meter.

|| SCHEDULE

- The final completion date for the project has been extended to roughly February 2023.

2016

Planning

2017

Design

2020

Construction

2023

Project Contacts

Project Manager

Stephen Norton
(651) 602-1551
Stephen.Norton@metc.state.mn.us

Assistant Manager

Jeannie Reardon
651-602-8930
jeanine.reardon@metc.state.mn.us