



SOUTHWEST LRT (METRO GREEN LINE EXTENSION)

Municipal Consent Guide

In July 2015, the Metropolitan Council approved a revised scope and cost estimate for the Southwest LRT (METRO Green Line Extension) project. In light of this change, the Council is seeking municipal consent from Hennepin County and the five cities along the proposed LRT route. The public can also review the plans during the municipal consent process and provide comments directly to local governments or to the Metropolitan Council.

The Metropolitan Council, the Hennepin County Regional Railroad Authority (HCRRA), Hennepin County and the cities along the Southwest LRT route (Minneapolis, St. Louis Park, Hopkins, Minnetonka and Eden Prairie) will hold public hearings and receive comments on design plans during the municipal consent process, as set out in Minnesota Statute 473.3994.

After reviewing the plans and receiving comments, Hennepin County and the city governments will vote to approve or disapprove the revised plans by October 11, 2015.

These revised preliminary design plans show the general dimensions and location of the light rail tracks, stations and other components.

The revised plans are available in printed form or as electronic documents on the Southwest LRT Project website (see page 4 for a list of locations).

The Metropolitan Council, Hennepin County Board of Commissioners and Hennepin County Regional Railroad Authority will hold a joint public hearing on August 27, 2015.

In August and September 2015, the cities will hold separate public hearings before their city councils vote on the plans. These meetings will deal only with the content of the revised preliminary design plans.

PUBLIC HEARINGS

Thursday, August 27, 2015
Minneapolis Central Library, Pohlad Hall
300 Nicollet Mall, Minneapolis

Open House: 5:00 p.m.
Public Hearing: 6:00 p.m.

Joint public hearing by the Metropolitan Council, Hennepin County Board of Commissioners and Hennepin County Regional Railroad Authority (HCRRA) on the physical design component of the revised preliminary design plans for the Southwest Light Rail Transit (Green Line Extension) Project.

August and September 2015

Cities will hold separate public hearings in August and September 2015. For more information, contact your city government.

More information on public hearings will be posted on the Southwest LRT website at www.metrocouncil.org/swlrt/municipal.

See following pages to find out:

- ✓ How to read the municipal consent plans
- ✓ Where to obtain copies of the plans
- ✓ How to submit written comments

How to Read Design Plans

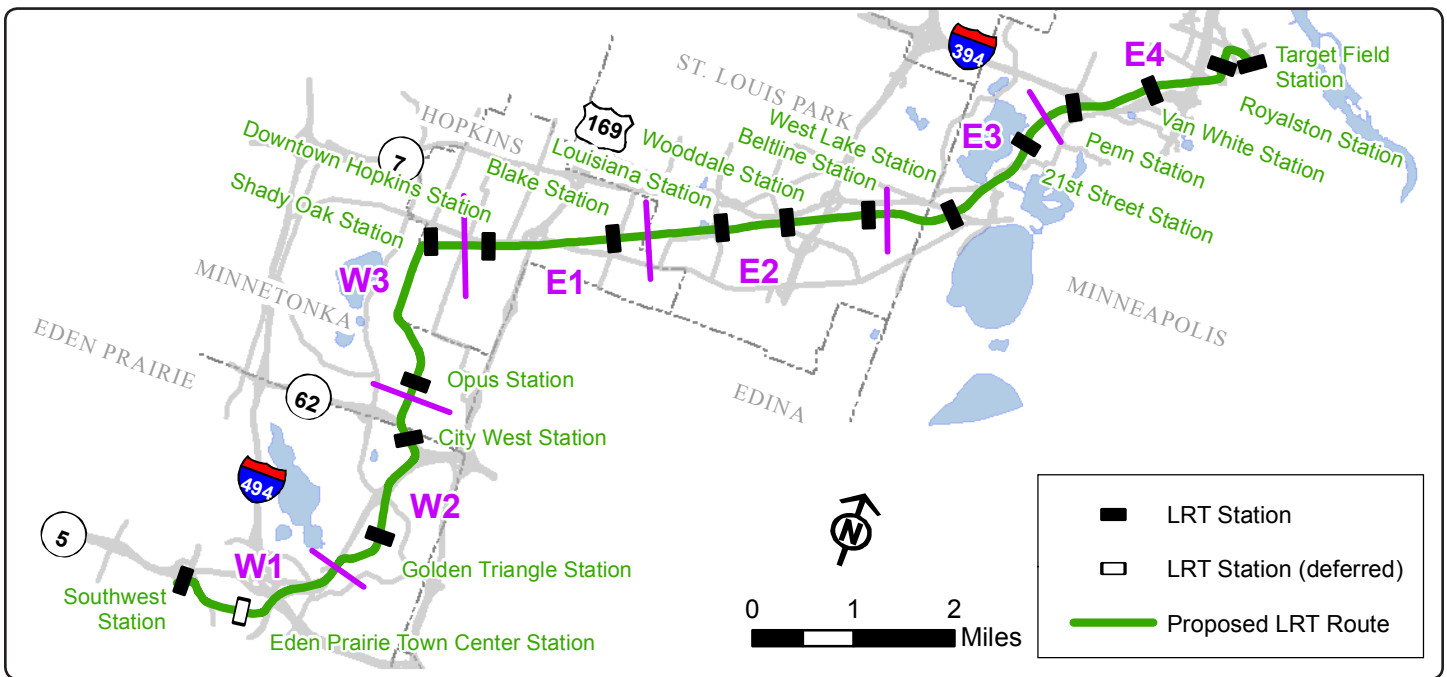
The design plans divide the proposed Southwest LRT route into seven **segments**, each covering a different geographic area. There are three West segments and four East segments.

The first few pages of each plan include a guide that shows the entire corridor, the segment's position on the corridor and a key to the symbols and abbreviations used in the plan.

The plans for each segment are separated into **disciplines**, including: tracks, station locations, roads and turn lanes, sidewalks, curbs and gutters, crosswalks, traffic signals, parking facilities, bus stops and trails. Existing conditions are also shown, to give readers a before-and-after comparison.

Within each discipline, sequences of detailed drawings show the placement and design of light rail facilities. Each drawing in a sequence is numbered, starting with 1 at the western end of the sequence.

Step 1: Find the **SEGMENT** that interests you. A detailed map is provided at the beginning of each plan.



| | City | Area Description | Stations | Code |
|---------------|-----------------------------|--|--|------|
| WEST SEGMENTS | Eden Prairie | Southwest Station to North of Flying Cloud Dr. & Valley View Rd. | Southwest, Town Center (deferred) | W1 |
| | Eden Prairie, Minnetonka | North of Flying Cloud Dr. & Valley View Rd. to Bren Road East | Golden Triangle, City West | W2 |
| | Minnetonka, Hopkins | North of Bren Road East to 11th Avenue South | Shady Oak, Opus | W3 |
| EAST SEGMENTS | Hopkins, St. Louis Park | 11th Avenue South to West of Powell Road | Downtown Hopkins, Blake | E1 |
| | St. Louis Park | Powell Road & Minnehaha Creek to East of Beltline Blvd. | Louisiana, Wooddale, Beltline | E2 |
| | St. Louis Park, Minneapolis | East of Beltline Blvd. to South of Cedar Lake Junction | West Lake | E3 |
| | Minneapolis | South of Cedar Lake Junction to 6th Avenue North | Penn, Van White, Royalston, Target Field | E4 |

How to Read Design Plans (continued)

Step 2: Determine which **DISCIPLINE** includes the information that interests you, and **TYPE** of plan you want to review.

| Components | Plan Type | Discipline Code | Type Code |
|--|---|-----------------|-------------|
| Legend & Abbreviations | N/A | SUR | LGD |
| Segment key map | Roadway Plan: Overhead View | GEN | KEY |
| Sheet layout index | Roadway Plan: Overhead View | GEN | IDX |
| Tracks Stations | Track Plan & Profile: Overhead View | TRK | PPFL |
| Roads and turn lanes Sidewalks and crosswalks Curbs and gutters Bus stops On-street parking Traffic signals | Roadway Plan: Overhead View | CIV | PPFL |
| Trails | Roadway Plan: Overhead View | TRL | PPFL |
| Sidewalk width Trail width Track location Stations | Typical Section: Cross-cut View | TRK | TYP |
| Existing roadway conditions | Existing Conditions Plan: Overhead View | SUR | PLN |

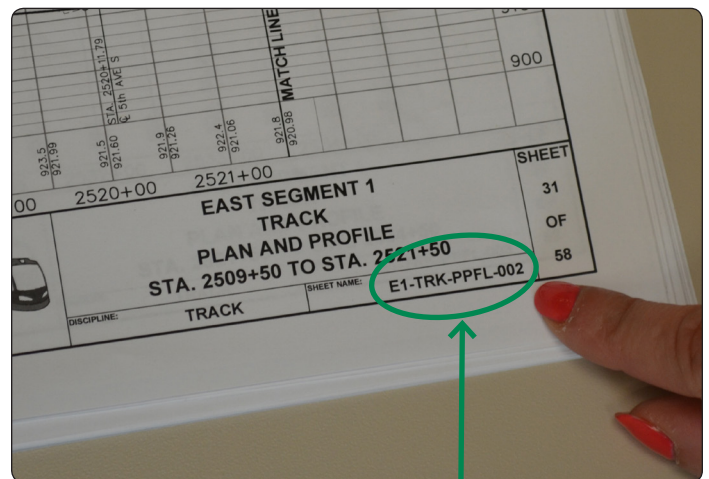
Step 3: Use the **INDEX** at the beginning of each Discipline to find the Sheet Number of the page covering the location you want to review.

Step 4: Find the code for the **PAGE** that contains the information you want using the Discipline Code and Type Code (Step 2) and the Sequence Sheet Number (Step 3).

For example, to see information about the location of LRT track just east of Downtown Hopkins Station, you would want to find the following page:

| Segment (Step 1) | Discipline (Step 2) | Type (Step 2) | Sheet No. (Step 3) |
|------------------|---------------------|---------------|--------------------|
| E1 | TRK | PPFL | 002 |

= E1-TRK-PPFL-002



Where to Obtain Copies of the Plans

All design plans can be downloaded from the Metropolitan Council's Southwest LRT Project website:

<http://www.metrocouncil.org/swlrt/municipal>

Printed copies of the full preliminary design plans will be available for public review at the following locations starting July 28, 2015:

Minneapolis Central Library 300 Nicollet Mall
(second floor), Minneapolis

MnDOT Transportation Library 395 John Ireland
Blvd., Saint Paul

Southwest LRT Project Office 6465 Wayzata Blvd.,
Suite 500, Saint Louis Park

Metropolitan Council Library 390 North Robert St.,
Saint Paul

Edina City Hall 4801 West 50th St., Edina

Printed copies of plan sets for individual cities along the proposed alignment will be available for public review starting July 28 at the following locations:

Eden Prairie (plan sets W1, W2):

Eden Prairie City Hall, 8080 Mitchell Road
Eden Prairie Library, 565 Prairie Center Drive

Minnetonka (plan sets W2, W3):

Minnetonka City Hall, 14600 Minnetonka Blvd.
Minnetonka Library, 17524 Excelsior Blvd.

Hopkins (plan sets W3, E1):

Hopkins City Hall, 1010 First Street South
Hopkins Library, 22 11th Avenue North

Saint Louis Park (plan sets E1, E2, E3):

Saint Louis Park City Hall, 5005 Minnetonka Blvd.
Saint Louis Park Library, 3240 Library Lane

Minneapolis (plan sets E3, E4):

Minneapolis City Engineer's Office, City Hall Room
203, 350 South Fifth Street
Franklin Library, 1314 East Franklin Avenue
Linden Hills Library, 2900 West 43rd Street
Sumner Library, 611 Van White Memorial Blvd.
Walker Library, 2880 Hennepin Ave.

How to Submit Written Comments

Submit written comments focused on the technical details of the design plans to both your city and county contacts listed below:

Hennepin County:

Kristy Morter
Public Works Transportation Department
1600 Prairie Drive
Medina, MN 55340-5421
kristy.morter@co.hennepin.mn.us

City of Eden Prairie:

Randy Newton
Assistant City Engineer
8080 Mitchell Road
Eden Prairie, MN 55344
rnewton@edenprairie.org

City of Minnetonka:

Elise Durbin
Minnetonka Community Development Supervisor
14600 Minnetonka Blvd.
Minnetonka, MN 55345
swlrt@eminnetonka.com

City of Hopkins:

Kersten Elverum
City of Hopkins Director of Planning & Development
1010 First St. South
Hopkins, MN 55343
swlrt@hopkinsmn.com

City of St. Louis Park:

Meg McMonigal
5005 Minnetonka Blvd.
St. Louis Park, MN 55416
mmcmonigal@stlouispark.org

City of Minneapolis:

Paul Miller
Project Manager, City of Minneapolis Public Works
309 Second Ave. S #300
Minneapolis, MN 55401
paul.miller@minneapolismn.gov

Metropolitan Council:

Southwest LRT Project Office
6465 Wayzata Blvd., Suite 500
St. Louis Park, MN 55426
ATTN: Nkongo Cigolo
swlrt@metrotransit.org