

SOUTHWEST

Green Line LRT Extension



Corridor Management Committee

November 5, 2014



Today's Topics

- Project Updates
- BAC/CAC Update
- Executive Change Control Board Formation Update
- Locally Requested Capital Investments



Project Updates

Advanced Design Consultant: Procurement Schedule

Major Milestones	Dates
Advertise RFP	Sept 3, 2014
Pre-proposal conference	Sept 23, 2014
Receive Proposals	Oct 16, 2014
Proposal Evaluations / Negotiations	Nov/Dec 2014
Contract Award / Notice to Proceed	Dec 2014/Jan 2015

Project Activities: Environmental

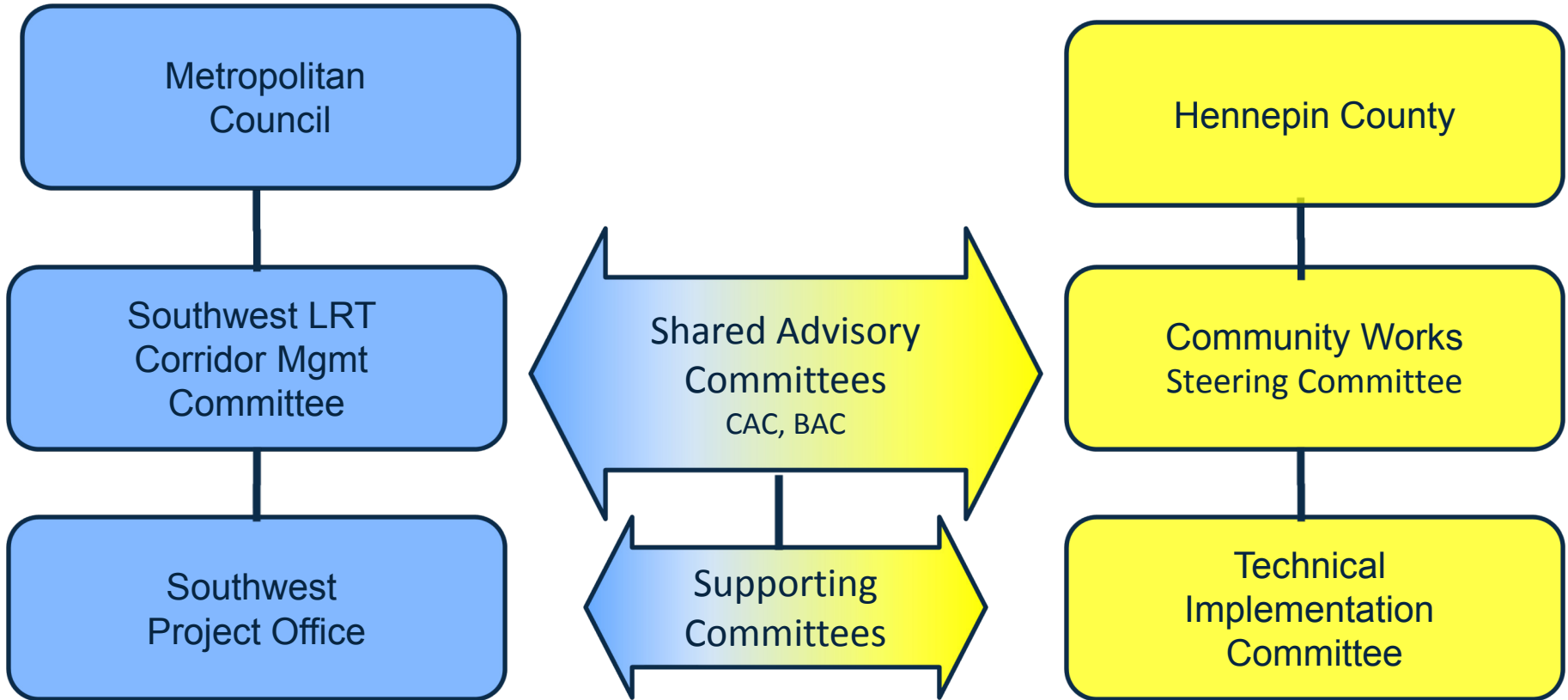
- Completed wetland delineations/reporting: Nov. 2014
- Continue wetland permitting coordination with regulatory agencies: July 2013 – Q4 2015
- Initiated Phase II Environmental Site Assessment field work activities: Oct. 2014
- Conduct cultural resources surveys: Q1 2014 - Q1 2015

Archeological Survey Field Work at Cedar Lake Ice Company site



SWLRT BAC and CAC Update

Southwest LRT Committee Structure



Advisory Committee Purpose

- Serve as a voice for the community
- Advise Corridor Management and Community Works Steering Committees
- Provide input on design: stations, public art, operations and maintenance facility, bike, pedestrian, and park-and-ride facilities
- Identify impacts related to construction and operation of the light rail line
- Identify strategies to mitigate construction impacts
- Serve as information resource and liaison to the community

Accountability

- Serve a 2-year term and attend meetings
- Actively participate in discussions; be a voice to advance the broader interests of community
- Report back to entity represented
- Provide feedback on communication and public involvement efforts
- Listen to and respect the viewpoints of others
- Accept outcomes of Met Council decisions

Advisory Committee Leadership

- Co-Chair appointments:
 - Corridor-wide perspective
- Co-Chair roles/responsibilities:
 - Lead committees through their tasks and ensure charter compliance
 - Identify topics/issues of committee concern
 - Develop meeting agendas with SPO and Hennepin County staff

SPO and Hennepin County Staff Support

- Identify topics/issues for advisory committee feedback and CMC/CW Steering Committee guidance
- Develop meeting agendas with Advisory Committee Co-chairs
- Distribute agendas and meeting summaries
- Post presentations/meeting materials on SWLRT.ORG

CAC Membership

- Community appoints members:
 - Minneapolis: 5 members
 - St. Louis Park: 3 members
 - Hopkins: 3 members
 - Minnetonka: 1 member
 - Eden Prairie: 5 members
- Corridors of Opportunity Engagement Grantees: 5
- At-large representation appointed by Met Council and Hennepin County Community Works: 3

BAC Membership

- Community appoints 2 members each:
 - Minneapolis
 - St. Louis Park
 - Hopkins
 - Minnetonka
 - Eden Prairie
- Chamber appoints 1 member each:
 - Minneapolis Regional
 - TwinWest
 - Eden Prairie
- At-large representation appointed by Met Council and Hennepin County Community Works: 5

Next Steps

- Send letters of invite: November 10
- Receive Nominations: November/December
- Hold joint BAC/CAC kick-off January 2015

Executive Change Control Board Formation Update

Executive Change Control Board (ECCB)

- Purpose:
 - Ensures compliance with the contingency management process called for in the CTIB and HCRRA full funding commitment resolutions
 - Approves project local funding for scope deferrals and Locally Requested Capital Investments (LRCIs)
 - Approve change orders, project requirements, contracts and contract cost increases > \$250,000
 - Approve scope deferrals and LRCI > \$75,000
 - Review at regular intervals all change orders < \$250,000

Executive Change Control Board (ECCB)

- Membership:
 - Voting
 - 3 CTIB Commissioners
 - 1 HCRRA Commissioner
 - 1 Met Council Member (ECCB Chair)
 - Non-voting
 - Representative from each municipality along the line

Technical Advisory Group (TAG)

- Purpose:
 - Advise the ECCB
- Membership:
 - CTIB
 - HCRRA
 - City Staff
 - MnDOT
 - Southwest LRT Project Office

Scope Deferral or LRCI Criteria for Local Funding*

- Improve benefits to the regional system
- Improve connectivity to the community by increasing ridership
- Increase safety and security for patrons
- Reduce operating costs

**LRCI must meet one or more criteria*

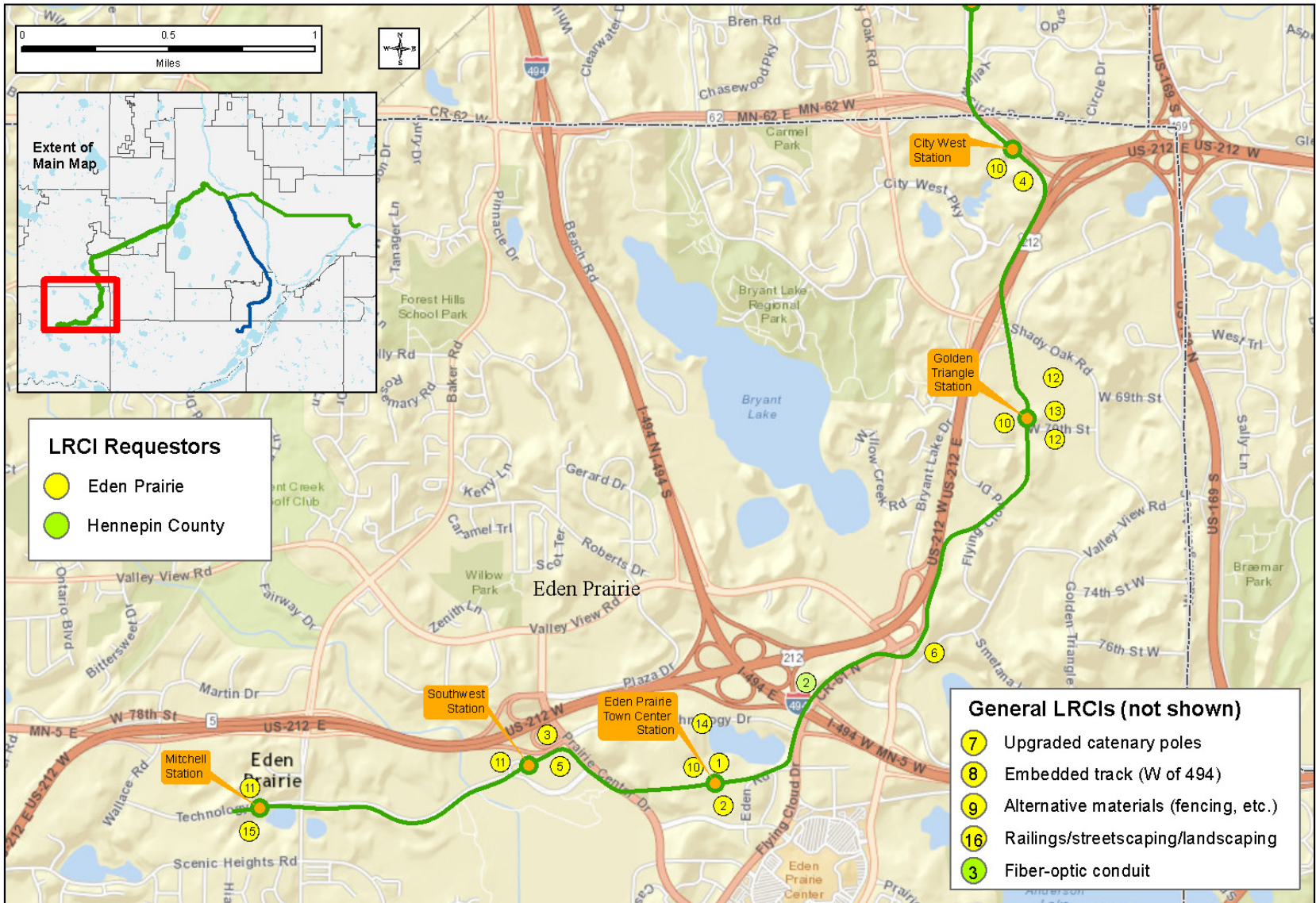
Locally Requested Capital Investments

Locally Requested Capital Investments

- Definition:
 - Improvements to a level beyond what is required for the functionality of the project
- Framework:
 - Not part of the approved project budget (i.e., below the line) but could be included as part of construction bid packages
 - Requires environmental clearance through the project
 - ***Assumes 100% non-FFGA local funding***

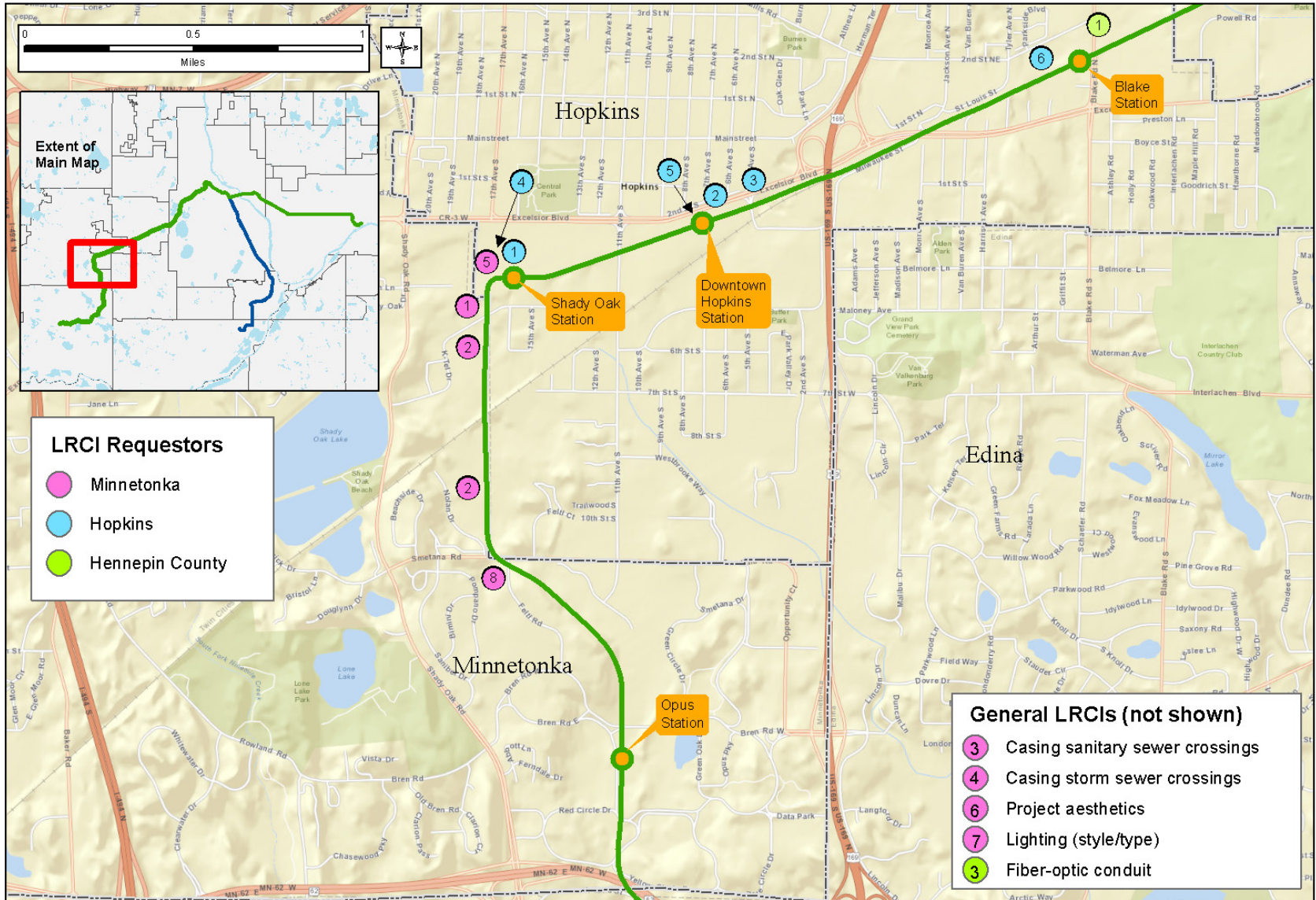
Southwest LRT Locally Requested Capital Investments (LRCIs): Eden Prairie

Rev 02 - 4 Nov. 2014



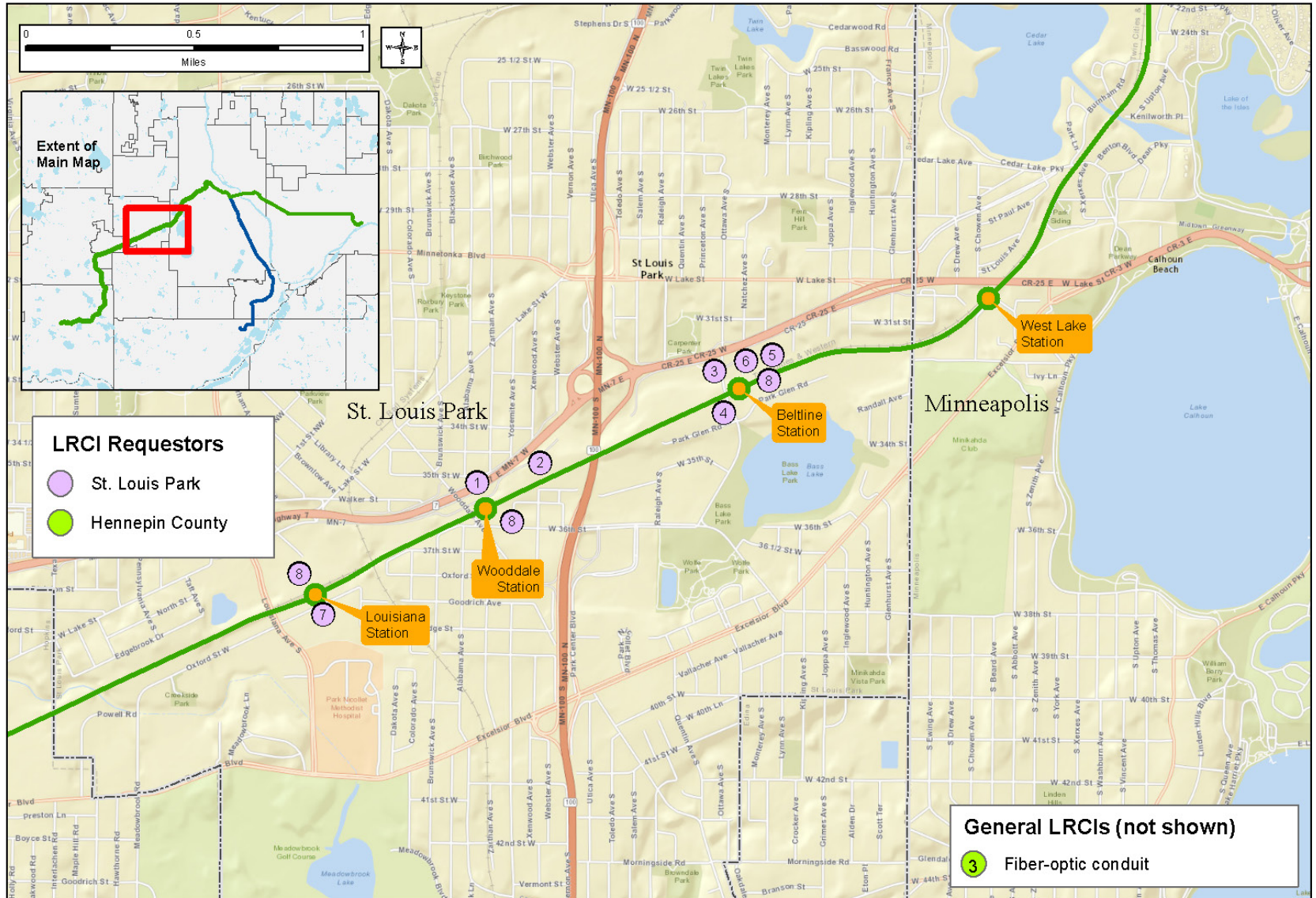
Southwest LRT Locally Requested Capital Investments (LRCIs): Minnetonka & Hopkins

Rev. 02 - 4 Nov. 2014



Southwest LRT Locally Requested Capital Investments (LRCIs): St. Louis Park

Rev. 01 - 20 Oct. 2014



Locally Requested Capital Investments Process: Non-FFGA Funding*

Event	Timeline
Project partners request LRCIs	Sept 2014
SPO evaluates LRCI impacts on project schedule	Oct 2014
Project partners identify funding	Nov 2014
Execute Master Funding Agreement	Q4 2014
Execute Subordinate Funding Agreement for design and environmental costs	Q4 2014/Q1 2015
Conduct Environmental Reviews	Q1 2015
Complete Design	Q4 2015
Execute Subordinate Funding Agreement for construction costs	Q1/Q2 2016
Construction	2016-2018

*Non-FFGA Funding could include local funds, federal or state grant secured by others, or other funding source outside of the approved project budget.

Level of Schedule Impact

- Level 1A
 - LRCI is beyond project footprint/ROW, requires significant design effort and/or environmental clearance
- Level 1B
 - LRCI is within project footprint/ROW, requires design effort and environmental clearance
- Level 2
 - LRCI is mostly aesthetic and/or does not pose a significant impact on design or environmental process

LRCI Commitment Schedule

Level 1

- Staff Confirmation: Dec 1, 2014
- Policy Commitment: Dec 31, 2014

Level 2

- Staff Confirmation: Feb 1, 2015
- Policy Commitment: Mar 31, 2015

Next Steps

- Establish ECCB
- Review LRCI list with ECCB; present recommendations to SWLRT CMC, Met Council, funding partners
- Discuss and establish contingency hold points with FTA

More Information

Online:

www.SWLRT.org

Email:

SWLRT@metrotransit.org

Twitter:

www.twitter.com/southwestlrt



Eden Prairie	LRCI Description	Level of Schedule Impact*	Design & Environmental	
			Commitment from Staff Needed By	Local Policy Board Action Needed By
1	Town Center Station with side platforms	2	Q1 2015	Q1 2015
2	North-south road and trail from Town Center Station to Singletree Lane	1A	1-Dec-14	31-Dec-14
3	Trail from Prairie Center Drive and the Highway 212 off-ramp to the Southwest Station	1B	1-Dec-14	31-Dec-14
4	Trail adjacent to the LRT tracks from City West Station south towards Shady Oak Road	1B	1-Dec-14	31-Dec-14
5	Enhance and improve the park-like setting along Technology Drive and Prairie Center Drive	2	Q1 2015	Q1 2015
6	Modification of grade separated crossing of Valley View Road to minimize LRT travel time through the elimination of sharp curves	1B	1-Dec-14	31-Dec-14
7	Rounded, fluted and tubular catenary poles throughout Eden Prairie	2	Q1 2015	Q1 2015
8	Direct fixation or embedded track at appropriate locations in Eden Prairie	1B	1-Dec-14	31-Dec-14
9	Alternative materials for fencing, bridge railings and similar appurtenances at appropriate locations in Eden Prairie along with agreements for long term maintenance	2	Q1 2015	Q1 2015
10	Public Plaza adjacent to the platforms at City West, Golden Triangle, Town Center stations - including paving, landscaping, seating, lighting, signage, and public art beyond base LRT project.	2	Q1 2015	Q1 2015
11	Enhanced signage and wayfinding, beyond base LRT project at SouthWest and Mitchell stations	2	Q1 2015	Q1 2015
12	Trail from station, heading northeast to Shady Oak Road from Golden Triangle station and trail from Golden Triangle station heading south to connect with existing City trail near Valley View Road	1A	1-Dec-14	31-Dec-14
13	Trail from Golden Triangle station, east along West 70 th to Shady Oak Road	1A	1-Dec-14	31-Dec-14
14	New north-south city street from Town Center Station to Technology Drive and relocate or monopole Xcel tower.	1A	1-Dec-14	31-Dec-14
15	Trail from Mitchell station heading south to Scenic Heights Road	1A	1-Dec-14	31-Dec-14
16	Decorative railing, streetscaping, and landscaping throughout	2	Q1 2015	Q1 2015

Minnetonka	LRCI Description	Level of Schedule Impact*	Design & Environmental	
			Commitment from Staff Needed By	Local Policy Board Action Needed By
1	Extension of 17 th Avenue from Shady Oak Station south to K-Tel Drive (including necessary utility connections)	1B	1-Dec-14	31-Dec-14
2	10 foot wide trail/sidewalk between Smetana Road and K-Tel Drive	1A	1-Dec-14	31-Dec-14
3	Casing at all LRT crossings of City of Minnetonka owned gravity sanitary sewer - Casing to extend a minimum of 20-ft from track on each side - If sanitary sewer crossing is located under street and quiet zone medians/gates/other infrastructure/etc. are present, carrier and casing to extend beyond the limits of these items	2	Q1 2015	Q1 2015
4	Casing at all LRT crossings of City of Minnetonka owned storm sewer - Casing to extend a minimum of 20-ft from track on each side - If sanitary sewer crossing is located under street and quiet zone medians/gates/other infrastructure/etc. are present, carrier and casing to extend beyond the limits of these items	2	Q1 2015	Q1 2015
5	Conversion of the surface parking lot at the Shady Oak Station to a structure - To the extent that LRT utilizes more than the initial 350 park and ride spaces at the Shady Oak Station - When development in the station area has reached a point that requires structured parking to support development, the Met Council will secure financing to replace with at least the number of existing surface parking spaces being utilized for LRT with structured parking	1B	1-Dec-14	31-Dec-14
6	Finished appearance/aesthetics of project (including buildings, stations, bridges, etc.) above and beyond what is essential to the LRT project within City of Minnetonka boundaries	2	Q1 2015	Q1 2015
7	Style and type of project lighting above and beyond what is essential to the LRT project within City of Minnetonka boundaries	2	Q1 2015	Q1 2015
8	Design/construct SWLRT alignment to accommodate future infill station at Smetana Rd	1B	1-Dec-14	31-Dec-14

Hopkins	LRCI Description	Level of Schedule Impact*	Design & Environmental	
			Commitment from Staff Needed By	Local Policy Board Action Needed By
1	Conversion of the surface parking lot at the Shady Oak Station to a structure	1B	1-Dec-14	31-Dec-14
2	Higher level design and treatment of the plaza area at Downtown Hopkins Station (includes additional landscaping, streetscaping, and enhanced public art)	2	Q1 2015	Q1 2015
3	Accessibility improvements at 5 th Avenue and Excelsior Boulevard	1B	1-Dec-14	31-Dec-14
4	New water and sanitary sewer under 17th Avenue	2	Q1 2015	Q1 2015
5	Bury power lines along trail alignment - 8th Avenue to 5th Avenue	2	Q1 2015	Q1 2015
6	New pedestrian lighting along trail alignment - Jackson Avenue to Blake Road	2	Q1 2015	Q1 2015
St Louis Park	LRCI Description	Level of Schedule Impact*	Design & Environmental	
			Commitment from Staff Needed By	Local Policy Board Action Needed By
1	Grade separated trail crossing at Wooddale Avenue	1B	1-Dec-14	31-Dec-14
2	Xenwood Avenue underpass near the Wooddale Station connecting Xenwood Avenue to Highway 7 frontage road for vehicles, pedestrians and bicyclists	1B	1-Dec-14	31-Dec-14
3	Grade separated trail crossing at Beltline Boulevard	1B	1-Dec-14	31-Dec-14
4	Beltline Boulevard underpass at rail and trail crossings	1A	1-Dec-14	31-Dec-14
5	Circulation and access improvements at Beltline Station including implementing the extension of Lynn Avenue and a new road along the north side of the rail corridor	1A	1-Dec-14	31-Dec-14
6	A commitment to structured parking at the Beltline Park & Ride and continued work towards a joint development project	2	Q1 2015	Q1 2015
7	Pedestrian/bike connection to Methodist Hospital from the Louisiana Station	1A	1-Dec-14	31-Dec-14
8	Streetscape and engineering plans that accommodate development and redevelopment of the LRT station areas in accordance with City and the Community Works Southwest Corridor Investment Framework	1B	1-Dec-14	31-Dec-14

Locally Requested Capital Investments (LRCIs)
November 4, 2014 - REV 9

DRAFT - WORK IN PROCESS

Hennepin County	LRCI Description	Level of Schedule Impact*	Commitment from Staff Needed By	Local Policy Board Action Needed By
1	Grade separated trail crossing at Blake Road	1B	1-Dec-14	31-Dec-14
2	Reservation of property to allow for a future trail along the corridor in Eden Prairie between the LRT and CSAH 61 to construct a trail from Technology Drive to the north	2	Q1 2015	Q1 2015
3	Fiber Optic conduit installed along the length of the corridor	2	Q1 2015	Q1 2015
4	Steam line to connect HERC to the Farmers Market area of the North Loop neighborhood (assumes alignment is within project footprint)	2	Q1 2015	Q1 2015
Notes:	*Level of Schedule Impact is based on the level of environmental clearance and/or design required			
	1A = LRCI is beyond footprint/ROW, requires significant design effort and/or environmental clearance			
	1B = LRCI is within footprint/ROW, requires design effort and environmental clearance			
	2 = LRCI is mostly aesthetic and/or does not pose a significant impact on design or environmental process			