

SOUTHWEST

Green Line LRT Extension



Corridor Management Committee

March 1, 2017



Today's Topics

- Chair's Legislative Update
- Construction Update
- DBE/Workforce Outreach Activities



Chair's Legislative Update

Legislative Update

- HF 1479 bill introduced February 20
 - Requests US Secretary of Transportation redirect federal funds from Southwest Light Rail to a block grant to fund other transit projects in the state
 - Referred to House Transportation & Regional Governance Policy

HF 1479 Theme

- Transfer SWLRT federal funds to a block grant for other MN transit projects

SWLRT Response

- FTA cannot simply transfer federal funds from competitive Capital Investment Grant to a transit block grant
- Unused SWLRT New Starts federal funds would deposit back to Capital Investment Grant competitive pot to be awarded elsewhere in America

HF 1479 Theme

- SWLRT not cost-effective or sustainable

SWLRT Response

- LRT is most cost-effective transit mode in system at \$1.66 operating subsidy per passenger (Latest financial 2015)
- Vehicle Miles Traveled in region decrease 29 million miles/year over No Build
- Greenhouse Gases decrease by 955,000 metric tons per year over existing conditions (2013)

Revised 3/10/17

HF 1479 Theme

- SWLRT not affordable or accessible

SWLRT Response

- Current train fare is \$1.75 or \$2.25
- Accessible to 80,900 jobs in 2035 along SWLRT corridor and 145,300 jobs in 2035 in downtown Minneapolis

HF 1479 Theme

- SWLRT opaque, deceptive, lacking meaningful public participation

SWLRT Response

- Project sponsored 870 assorted community meetings attended by 28,000 people since 2008 when discussion began examining alternatives
- Project convened 179 formal public meetings seeking public input/comment
- Public provided 1,275 formal comments to the NEPA EIS documents

HF 1479 Theme

- Met Council avoided meaningful legislative review of SWLRT
- Legislature has not held a single vote or passed an act that could be interpreted as legislative approval

SWLRT Response

- Legislature received many SWLRT project updates in front of committees since 2009
- Legislature appropriated a total of \$30 million for SWLRT on three different occasions: 2009, 2011 and 2013

HF 1479 Theme

- SWLRT
Certificates of Participation are a form of indebtedness

SWLRT Response

- Certificates of Participation by definition are not classified as debt

HF 1479 Theme

- Met Council expects MN Legislature to provide 50% of ongoing SWLRT net operating subsidy

SWLRT Response

- Current state statute requires the Legislature to provide 50% of ongoing SWLRT net operating subsidy

HF 1479 Theme

- SWLRT bypasses most densely populated, most transit dependent, largely minority populations in the region

SWLRT Response

- West Lake Station high population density currently with more infill development in the pipeline
- High concentration of zero car households:
 - Royalston (28%)
 - Bassett Creek Valley (31%)
- High proportion of people of color:
 - Southwest Station, Eden Prairie (49%)
 - Blake Station, Hopkins (38%)
 - Bassett Creek Valley and Royalston Stations, Minneapolis (42% and 41%) respectively

HF 1479 Theme

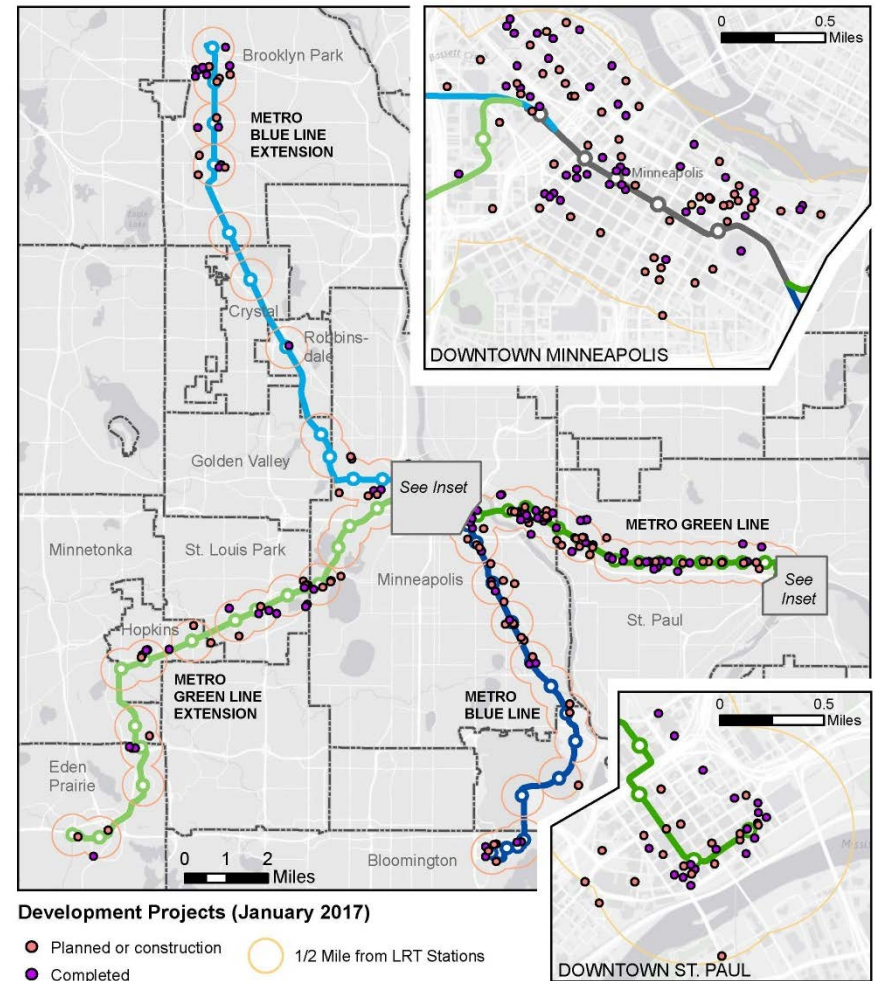
- SWLRT will adversely affect quality of Minneapolis Chain of Lakes

SWLRT Response

- Independent water studies found SWLRT will not adversely affect groundwater quality or levels
- FTA issued a Record of Decision for SWLRT

Tracking Private Investment

- \$515 million development planned or underway along SWLRT
 - Mix of projects around planned West Lake Street Station in Minneapolis
 - 1+ million s.f. office space around City West Station in Eden Prairie
 - 332-unit residential building proposed near Opus Station in Minnetonka



Construction Update

Major Project Milestones

Element	Timeframe
Civil Construction Invitation for Bids	February 14, 2017
Systems Construction Invitation for Bids	May 2017
OMF Construction Invitation for Bids	June 2017
Anticipated Start of Civil Construction	Q3 2017
Anticipated Start of Systems Construction	Q3 2017
Anticipated Start of OMF Construction	Q3 2017
Full Funding Grant Agreement	Mid 2017
Heavy Construction	2017-2020
Revenue Service	2021

Civil Construction Contract Status

- Invitation for Bids (IFB) Issued on February 14
- Pre-bid meeting scheduled for March 3
- Bids due May 2

Construction Org Chart



Construction Staffing: Filled or Interviewing

- Filled Positions

- Director Construction
- Assistant Director Construction
- OMF Construction Manager
- 3 Assistant Council Authorized Reps (ACAR) for Track, TPSS and OCS
- Communications Specialist

- Interviewing

- 3 ACARs for Signals, Communication & Freight Rail
- QA/QC Specialist
- Freight Rail Coordinator

Construction Staffing: Recruiting

- Manager, Construction Safety and Security
- 2 Managers for OMF and Civil Construction
- 3 Council Authorized Representatives for Civil, Systems and OMF
- 10 more ACARs for variety of disciplines
- 2 Change Control Administrators
- 3 Office Engineers

Local Actions for Construction: Funding

Jurisdiction	Funding Agreements	Total Value (in \$millions)*
Eden Prairie	1	\$7.0
Minnetonka	2	\$3.6
Hopkins	3	\$1.3
St. Louis Park	3	\$5.6
Hennepin Co.	4	\$13.9
MnDOT	1	\$1.2
Total		\$32.6

*Includes project funding commitment, base project elements and locally funded work



Local Actions for Construction: Funding

- Regional Solicitation grants approved by Transportation Advisory Board (TAB) for public improvements that will leverage SWLRT investment
 - Eden Prairie: \$6.1M for Town Center Station construction
 - Hopkins: \$6M for purchase of one floor of constructed parking at Downtown Hopkins Park and Ride
 - St. Louis Park: \$6.4M for construction of 268 space Park and Ride structure at Beltline Station
 - Hennepin County: \$3.7M transferred to the Project for construction of Grade Separated Trail Crossings with stairs at Blake, Wooddale and Beltline Stations

Local Actions for Construction: Permits

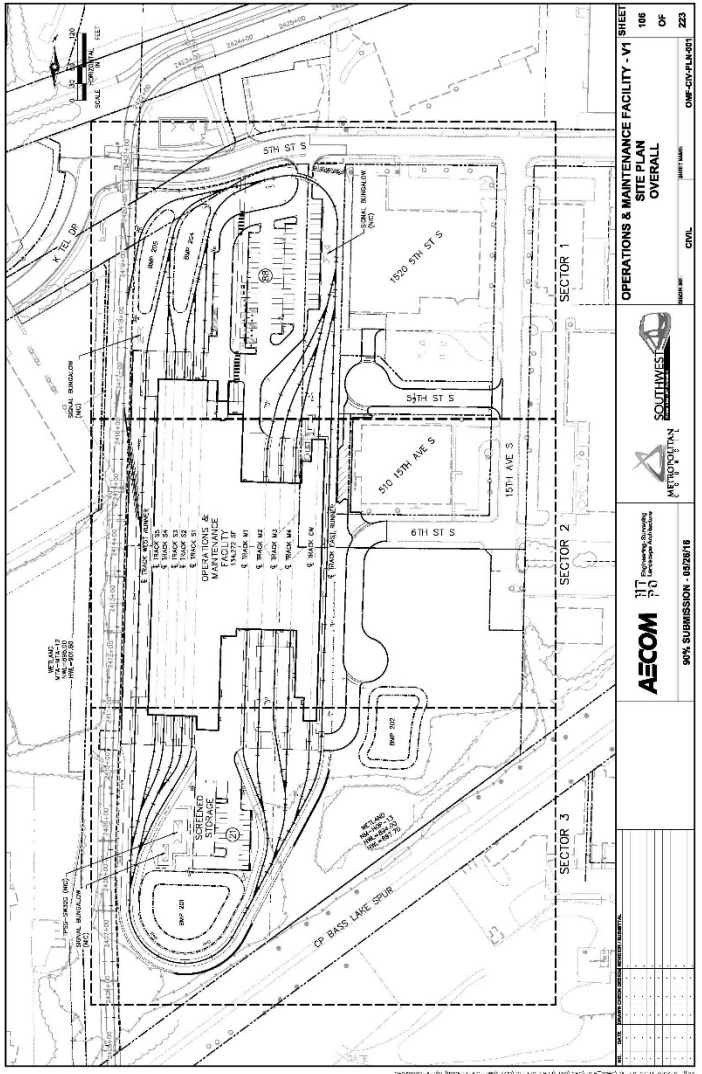
City Permits	Approved
St. Louis Park Sediment and Erosion Control Permit	May 2016
Minnetonka Permits <ul style="list-style-type: none">• Wetland Rezoning• Wetland and Floodplain Alteration Permit• Wetland Replacement Plan• Wetland, wetland Buffer and Floodplain Variances• Conditional Use Permit	Aug. 2016
Eden Prairie Wetland Replacement Plan	Sept. 2016

Local Actions for Construction: Permits

Permitting Agency	Approved
Wetland Conservation Act	Fall 2016
U.S. Army Corps Section 404	Dec. 2016
Bassett Creek Watershed Management Commission	Dec. 2016
Nine Mile Creek Watershed District	Dec. 2016
Riley Purgatory Bluff Creek Watershed District	Dec. 2016
Minnehaha Creek Watershed District	Feb. 2017

Local Actions for Construction: OMF

- Dec 20, 2016: Public hearing for site plan review application at Hopkins Planning and Zoning Commission on
- Jan 3, 2017 Site plan review and approval at Hopkins City Council



DBE & Workforce Outreach Activities

Jan 10: Great Minds Workshop



Great Minds Workshop: Attendees

- Alex Tittle, Diversity ACT
- Ashley Realbanas, Goodwill-Easter Seals
- Barb Lau, Assoc. Women Contractors
- Barry Davies, Iron Workers 512
- Bernard Slater, Cement Masons Union
- Bonnie Vogel, Vogel Sheetmetal
- Christina Nebel-Dickerson, PTAC
- Clifton Boyd, B & L Supply
- David Bice, Bald Eagle Erectors Inc
- Debra Bushrod, Urban League
- Ekta Prakash, CAPI
- Gerald Ben-Ami, Big G Tech support
- Gilbert Odonkor, Hennepin Co.
- Greg Massey, Cement Masons Local 633
- James Burroughs, Minnesota Chief Inclusion Officer
- Jenny Winkelaar, Minneapolis Building and Construction Trades Council
- Jim Roth, Metropolitan Consortium of Developers
- John O'Phelan, Ramsey Co. Workforce Solutions
- Kent Robbins, Robbins Consulting
- Kevin Lindsey, Commissioner , Minnesota Department of Human Rights
- Kolu Wilson, DEED
- Marisa Bayer, Eden Prairie
- Maura Brown, Alliance for Metropolitan Stability
- Mel Reeves, HIRE
- Melyssa Mdumuka, Minneapolis Department of Civil Rights
- Paul Merkling, MEDA
- Randy Czaia, SBA Minnesota Office
- Sarah Lechowich, Saint Paul College

Great Minds Workshop: Feedback

- DBE Challenges

- Bidding
- Financial/Cash-flow
- Workforce
- Business challenges
- Qualifications/certifications

- Workforce Challenges

- Education
- Transportation
- Industry culture
- Industry awareness
- Impact on family
- Financial

Feb 21: DBE Workshop

- 14 attendees
- Discussed challenges and identified potential solutions or resources
- Challenge 1: Cashflow and retainage challenges
 - MEDA and NDC presented financial resources available to small businesses
- Challenge 2: Long and complex contract language
 - Planning pre-bid meeting to review sample contract with DBEs
- Next meeting in May



Feb 22: Workforce Workshop

- 9 attendees
- Discussed challenges; identified potential solutions or resources
- Challenge 1: Training
 - Met Council received grants to develop *LRT BUILD* training for adults and high school graduates
 - Identify other training resources; make list available to potential workers
- Challenge 2: Transportation
 - Direct workers to Diversion Solutions which is a drivers license reinstatement program
- Challenge 3: Child care
 - Compile list of child care providers along alignment, make list available to potential workers
- Next Meeting in April

DBE Meet and Greet: March 3

- Networking opportunity to learn about potential partnering opportunities
- Prime contracting teams conduct brief interviews with prospective DBE subcontractors & suppliers
- DBE firms are encouraged to attend the pre-bid meeting



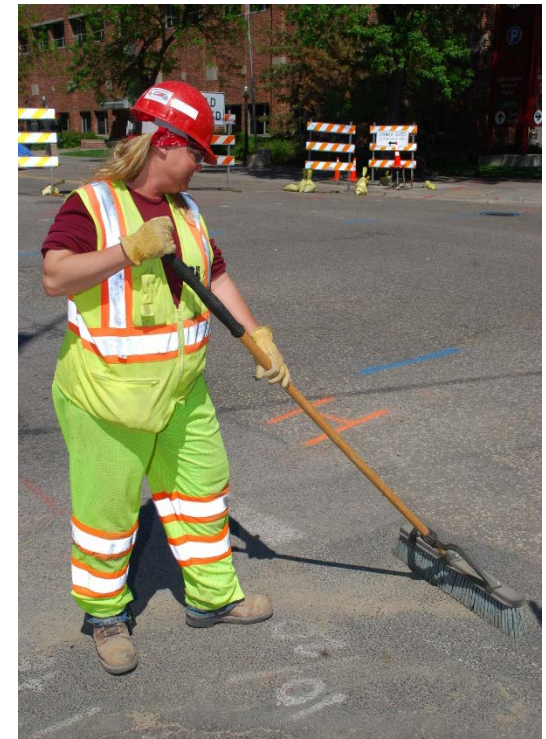
LRT Build Program

- 10 week pre-apprentice training program
 - 4 wks. job readiness training
 - 4 wks. core construction training
 - 2 wks. hands-on training
- Funding provided by:
 - McKnight Foundation \$100,000
 - Hennepin Carver Workforce Innovation Act \$150,000



LRT Build Program

- Provides opportunities to meet with unions & contractors working on SWLRT
- Trades: iron workers, masons, carpenters, operating engineers, construction laborers



More Information

Online:

www.SWLRT.org

Email:

SWLRT@metrotransit.org

Twitter:

www.twitter.com/southwestlrt

