

SOUTHWEST

Green Line LRT Extension



SWLRT Community Advisory Committee

October 11, 2012



EDEN PRAIRIE | MINNETONKA | EDINA | HOPKINS | ST. LOUIS PARK | MINNEAPOLIS



Today's Topics

- Approval of Meeting Minutes
- Corridors of Opportunity Community Engagement Grants
- Community Station Spotlight: City West and Golden Triangle
- Guides to Commenting on the DEIS
- Project Updates
- Member/Committee Reports
- Public Forum

What is Corridors of Opportunity?

- Collaborative of 24 government, non profit and for profit organizations and business leaders
- Goal: Build out the transitway system to benefit all.
- Includes 7 transitways – Hiawatha, Cedar, Bottineau, Central, Northstar, Gateway
- \$22 million dollars in grants
 - 22 projects related to land use and transportation.
 - \$5 million from HUD Sustainable Communities
 - \$17 million from Living Cities



What funds are going to the Southwest LRT Corridor?

- Transitional Station Area Action Plans
- SW Corridor Housing Inventory
- Community Engagement Grantees
 - New American Academy
 - Blake Road Collaborative
 - La Asamblea (multi corridor)
 - Centro de Trabajadores (multi-corridor)
 - MICAH (multi-corridor)



What is the Community Engagement ?

- \$ 720,000 for engaging and building leadership capacity in communities of color, new immigrant communities, low income persons and persons with disabilities around land use and transportation.
- *Not replacing public outreach*
- Competitive grant process for community based organizations to receive funds
- Lead by three non profit leaders:
 - Repa Mekha, Nexus Community Partners
 - Russ Adams, Alliance for Metropolitan Stability
 - Ned Moore, Minnesota Center for Neighborhood organizing



Round 1 Grantees

First Round Grantee	Formal Partner	Corridor	Project Title	Dollars
Asian Media Access		Bottineau	Asian Pacific Community Network	\$30,000
African Career, Education, and Resource, Inc (ACER)	City of Brooklyn Park	Bottineau	Making Transit Meaningful	\$30,000
Harrison Neighborhood Association	Heritage Park N.A, Lao Assistance Center	Bottineau	Transit Equity Partnership	\$45,000
Asian Economic Development Association		Bottineau, Central	Organizing for Transit and Equitable Development	\$45,000
Advocating Change Together		Central	Advocating Change Together	\$39,700
Aurora St. Anthony NDC	JUST Equity	Central	Historic Rondo/Equitable TOD Campaign	\$60,000
West Bank CDC	Somali Action Alliance	Central	Don't Pass Us By	\$47,086
Intercongregation Communities Association	Blake Rd Corridor Collaborative	Southwest	Blake Rd Neighborhood Discussion Circles	\$30,000
New American Academy		Southwest	SW Corridor Immigrant Opportunities Outreach & Engagement	\$30,000
East Side Prosperity Campaign	Hmong Am. Ptship, Casa de Esperanza, Cultural Wellness Ctr, Am. Indian Fam Ctr, Dayton's Bluff & Payne/Phalen CC's	Gateway	Eastside Organizations	\$40,000
10 Total Grants				\$396,786

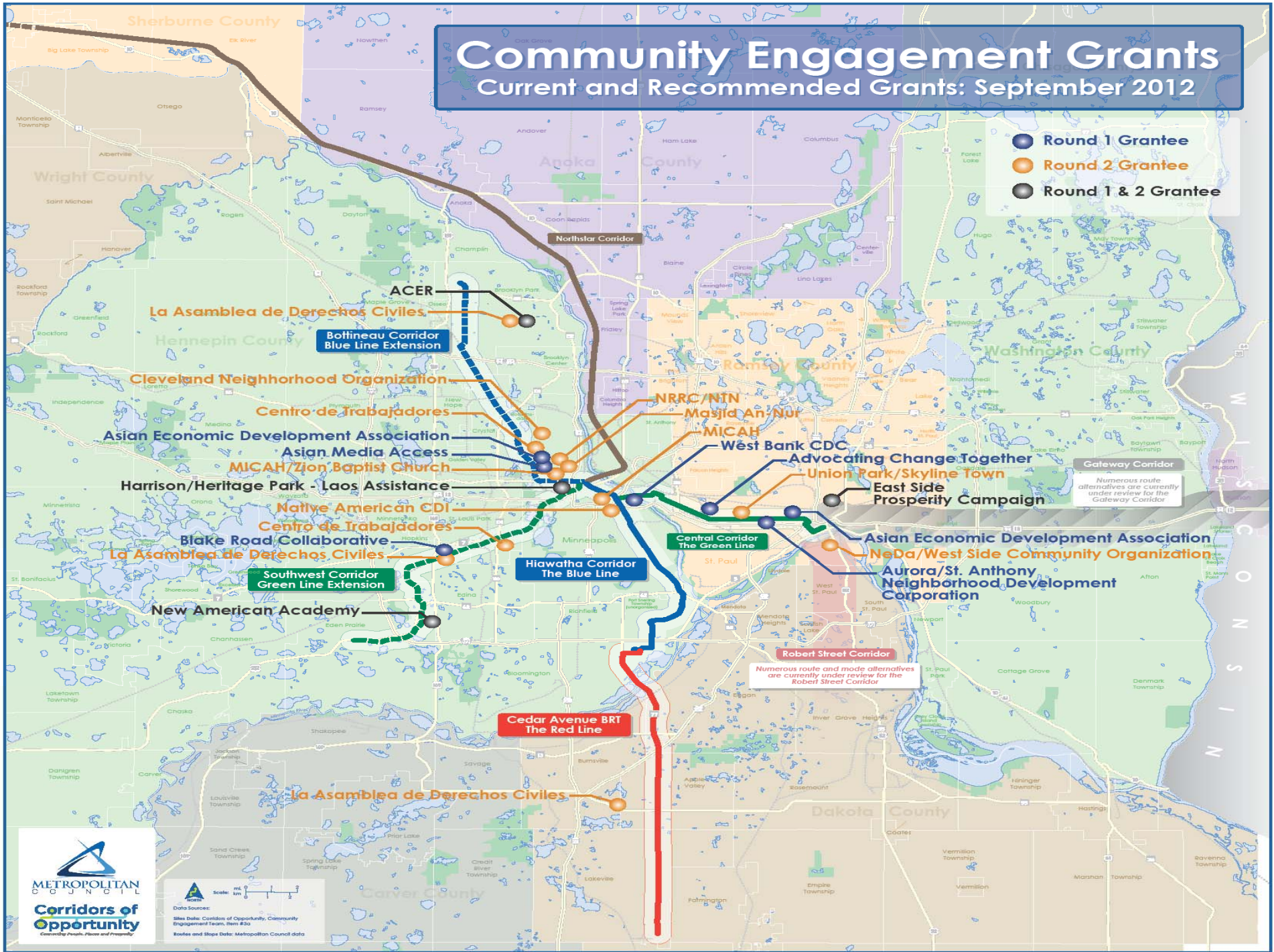
Round 2 Grantees

Recommended Grantee	Formal Partner	Project Category	Project Title	Corridor	Amount Recommended
African Career, Education, and Resource, Inc (ACER)	City of Brooklyn Park	Received 1 st Round Funding	Making Transit Meaningful - 2	Bottineau	\$30,000
Cleveland Neighborhood Association	Works Progress	New Applicant Capacity	Bus Shelter Toolkit and Outreach	Bottineau	\$10,000
Harrison Neighborhood Association	Heritage Park NA and Lao Assistance Center	Received 1 st Round Funding	Transit Equity Partnership -2	Bottineau	\$45,000
Masjid An-Nur		New Applicant Capacity	En-LIGHT-enment	Bottineau	\$10,000
Northside Residents Redevelopment Council	Northside Transportation Network	New Applicant Implementation	Northside Bottineau Transitway Organizing	Bottineau	\$30,000
La Asamblea de Derechos-Civiles		New Applicant Capacity	Emancipation Campaign: Corridors to Freedom	Bottineau, Cedar, Southwest	\$10,000
Union Park District Council	Skyline Tower Advantage Center	New Applicant Implementation	Building Skyline Tower Power	Central	\$28,000
Eastside Prosperity Campaign	Hmong Am. Ptship, Casa de Esperanza, Cultural Wellness Ctr, Am. Indian Fam Ctr, Dayton's Bluff & Payne/Phalen CC's	Received 1 st Round Funding	Engage East Side	Gateway	\$25,000
Native Am CDI (NACDI)	Seward Neighborhood Group	New Applicant Implementation	Anpetu Was'te Cultural Arts Market	Hiawatha	\$35,000
Neighborhood Development Alliance	West Side Community Organization	New Applicant Implementation	Robert St Transitway Alternatives Analysis	Robert St Transitway	\$20,000
Centro de Trabajadores Unidos en la Lucha (CTUL)		New Applicant Capacity	Good Job Opportunities in Corridor Development	The Interchange, Bottineau, Southwest	\$10,000
Metro Interfaith Council on Affordable Housing (MICAH)	Bethesda Missionary, Zion Baptist Church, Discussions that Encounter	New Applicant Implementation	Interfaith Housing, Transit and Equitable Development Organizing	Southwest, Bottineau	\$30,000
New American Academy		Received 1 st Round Funding	SW Immigrant Council - 2	Southwest	\$40,000
13 Total Grants Recommended	9 New Recommended Grantees				\$323,000

Community Engagement Grants

Current and Recommended Grants: September 2012

- Round 1 Grantee
- Round 2 Grantee
- Round 1 & 2 Grantee



Scale: 0 1 2 miles
Data Source:
Site Data: Corridors of Opportunity Community Engagement Team, Item #30
Routes and Slope Data: Metropolitan Council data

Thanks from....

Susan Hoyt

Community Engagement

Corridors of Opportunity

Metropolitan Council

susan.hoyt@metc.state.mn.us

Work: 651-602-1330

www.metrocouncil.org/planning



City West Station Golden Triangle Station

Southwest LRT

Community Advisory Committee

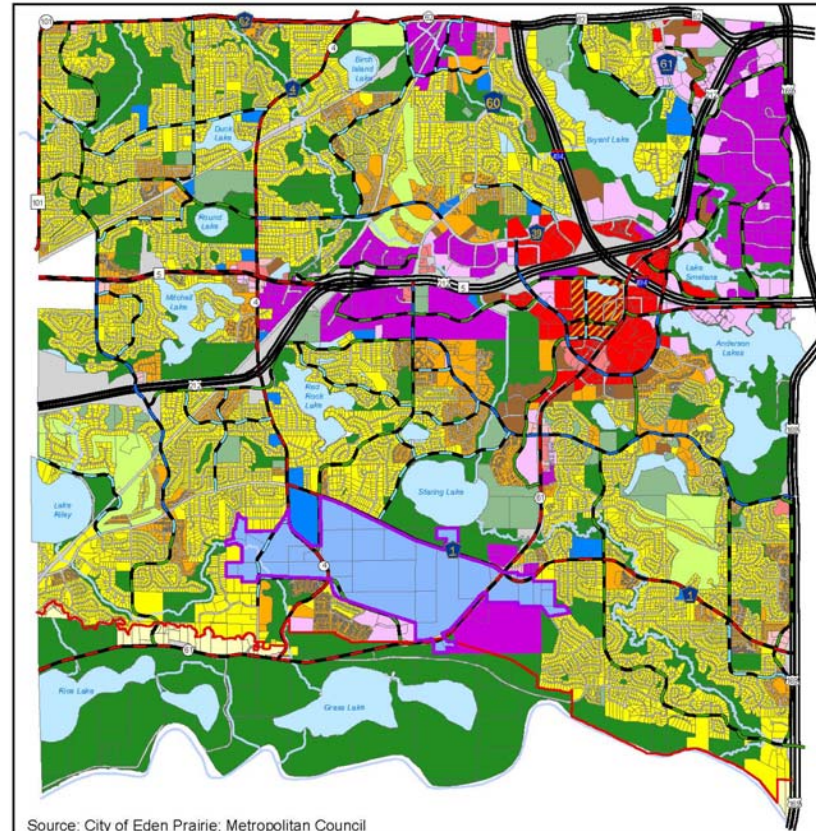
10/11/12



Overview of the Community



Land Use Guide Plan Map 2030



Source: City of Eden Prairie; Metropolitan Council



Figure 3.2

About Eden Prairie

Population: 62,700

Size: 36 square miles

Parkland: 2,200 acres, including 170 miles of trails

Businesses: 3,400 including Eden Prairie Center



About Eden Prairie

- 73 percent of the City's residents are 18 years of age and over
- 57% of the population 25 years and older have obtained a bachelor's degree or higher
- There are an estimated 23,800 households



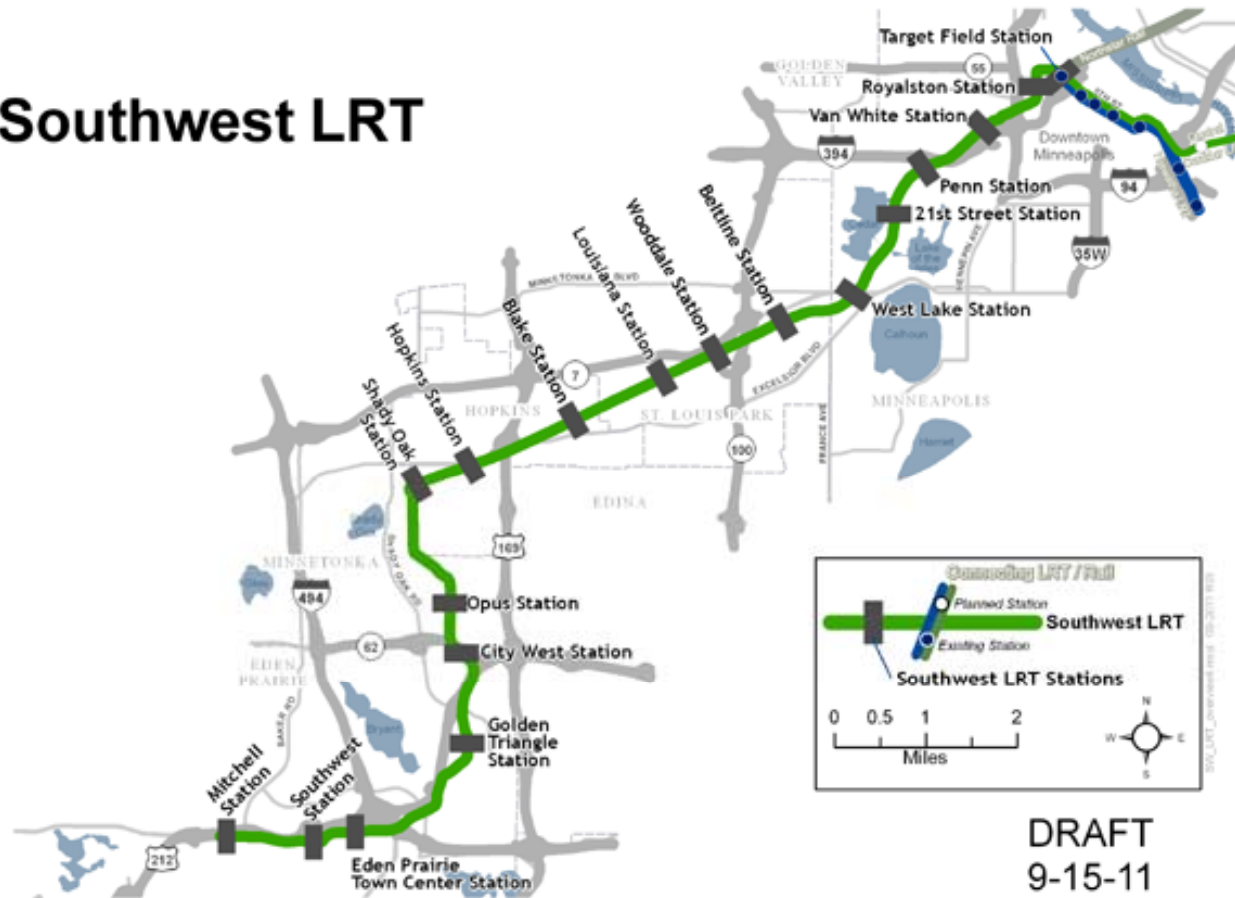
Population, Household & Employment Forecasts

	2007	2010	2020	2030	Change 2007-2030
Population	62,090	65,500	69,900	77,100	+15,010
Households	23,957	25,000	28,500	33,000	+9,043
Employment	51,300	55,000	62,000	65,500	+14,200

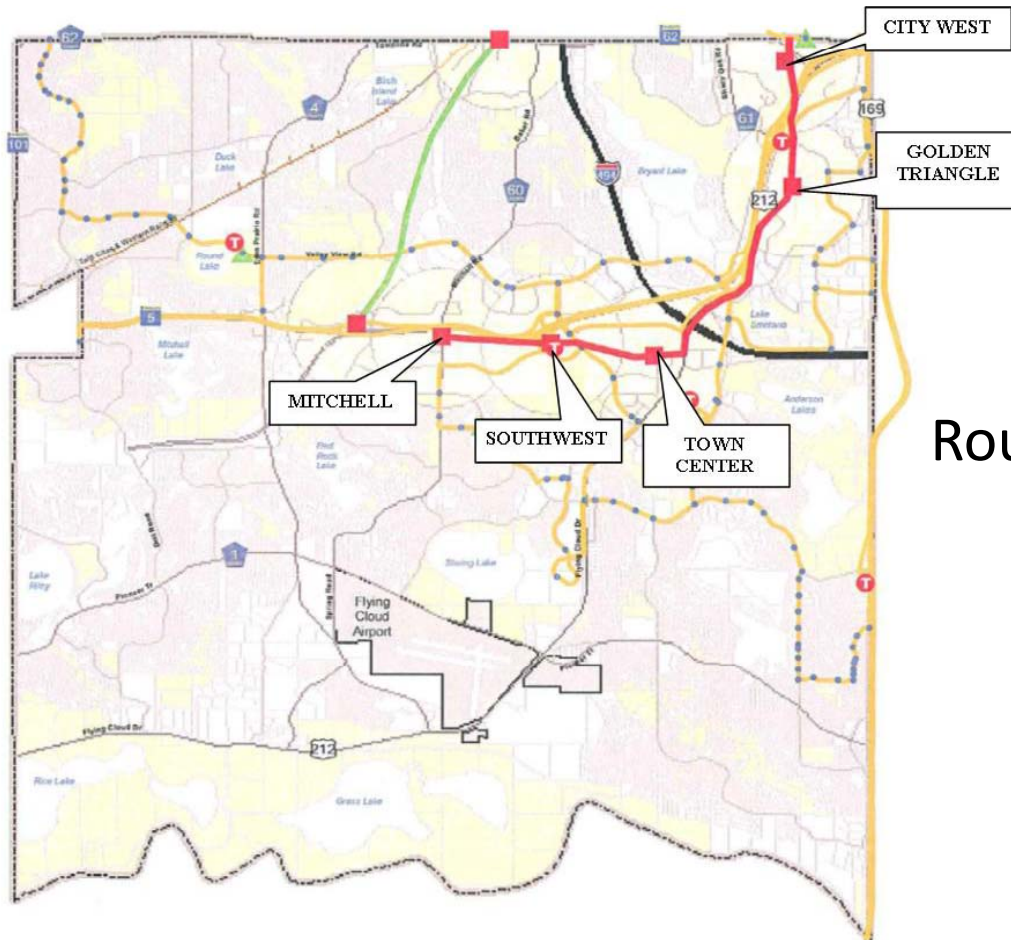
Source: December 2005 City of
Eden Prairie. Met Council 2007

Southwest LRT

Southwest LRT



Comprehensive Plan

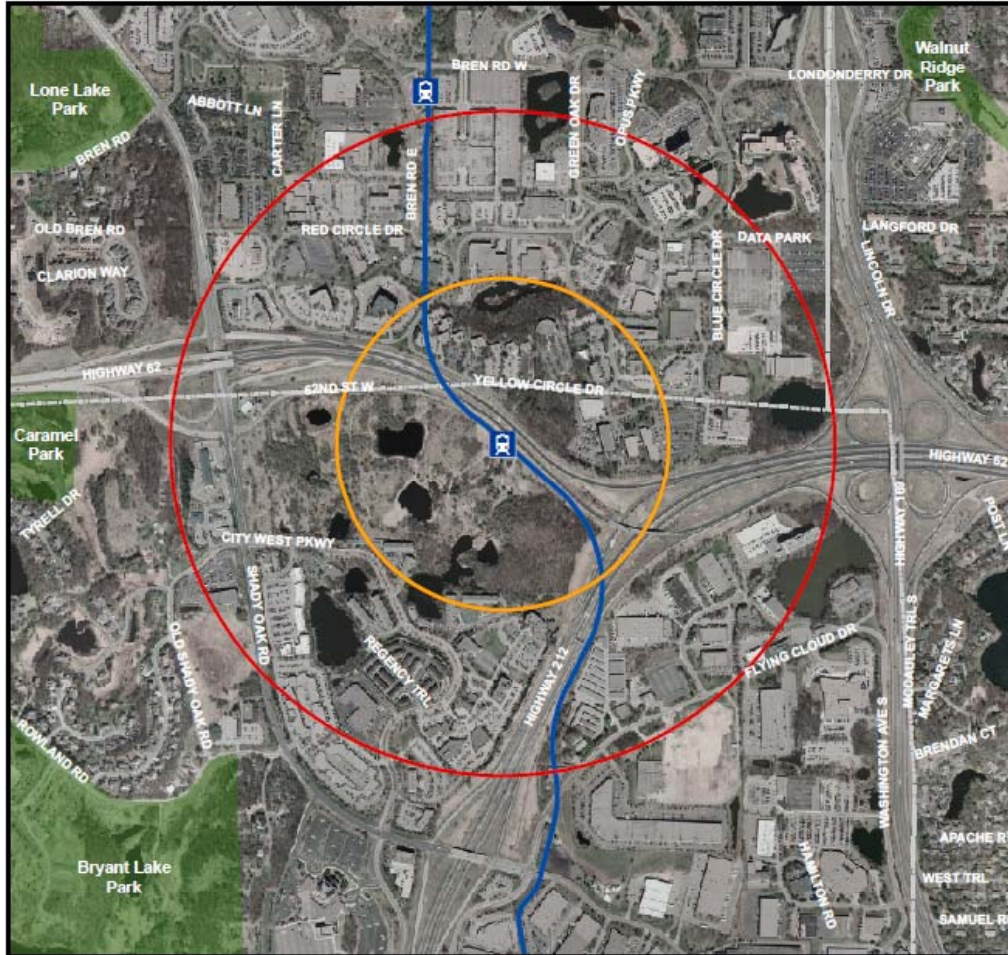


Route and Station Location

City West Station



Station Location Overview



Land Use Statistics

- 374 High density owner occupied townhouses and condos
- 50,000 Sq. Ft. Retail
- 750,000 Sq. Ft. Office/Industrial

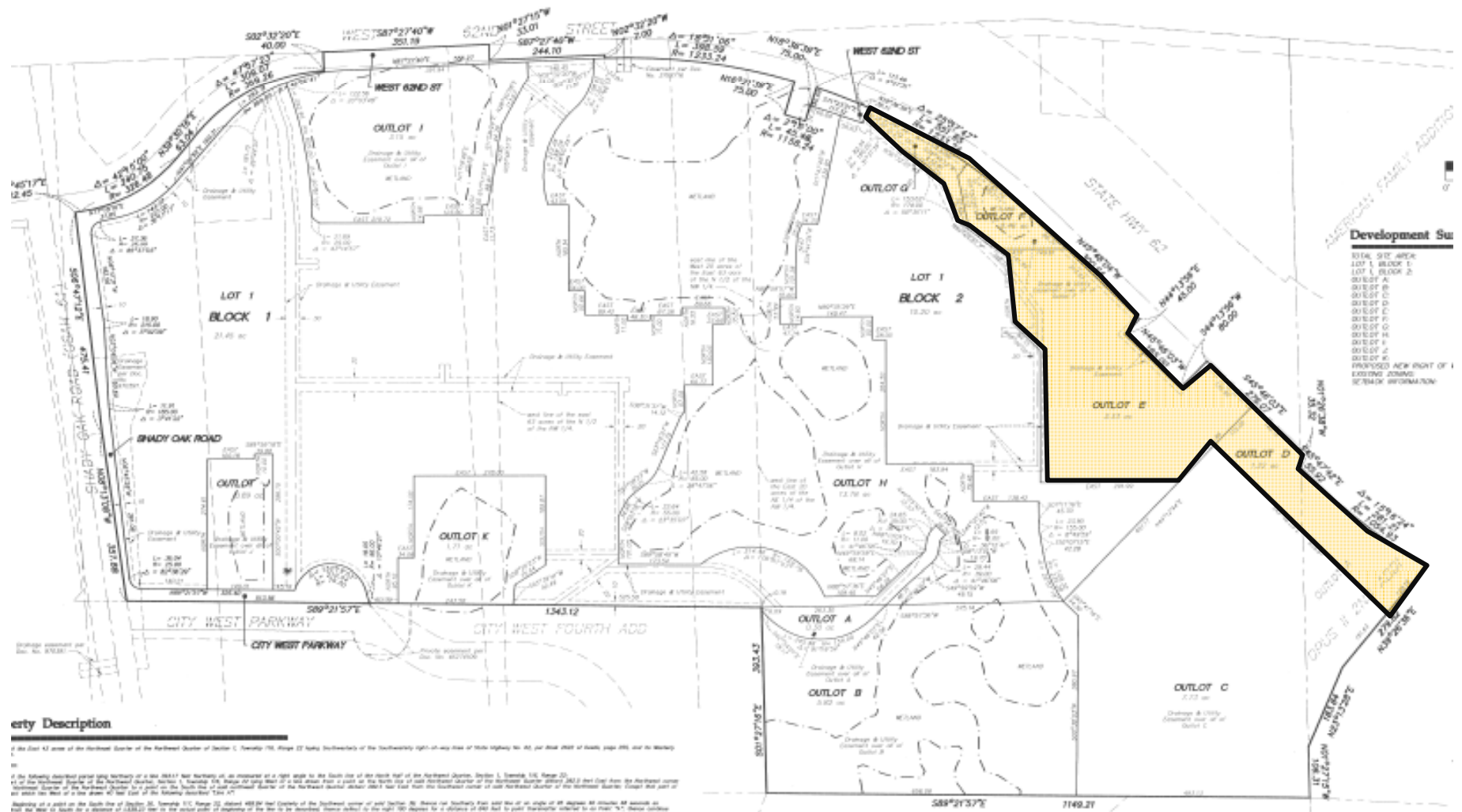
UHG Aerial Map





- 1,481,700 square feet of office
- 6700 Jobs
- 6 acres of land dedicated for LRT Station, Park and ride
- Phase 1 construction beginning in spring of 2012
- Full occupancy by 2016
- TDM Plan

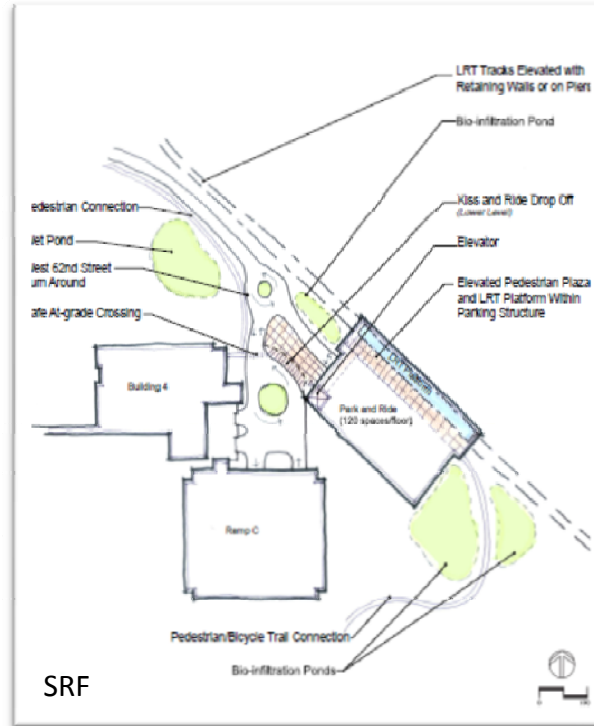
UHG—Outlots for Dedicated LRT



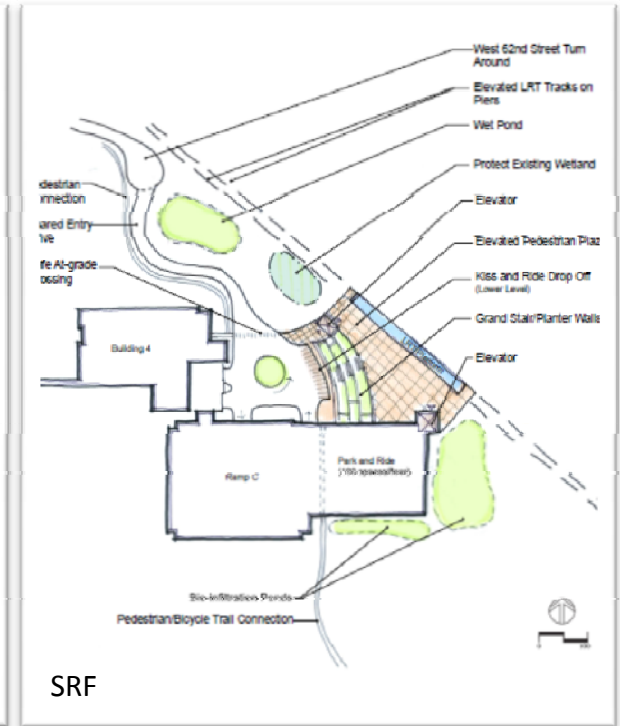
Station Concepts by SRF



Concept 1



Concept 2



Concept 3

UHG Sidewalks and Trails



UHG Road Improvements

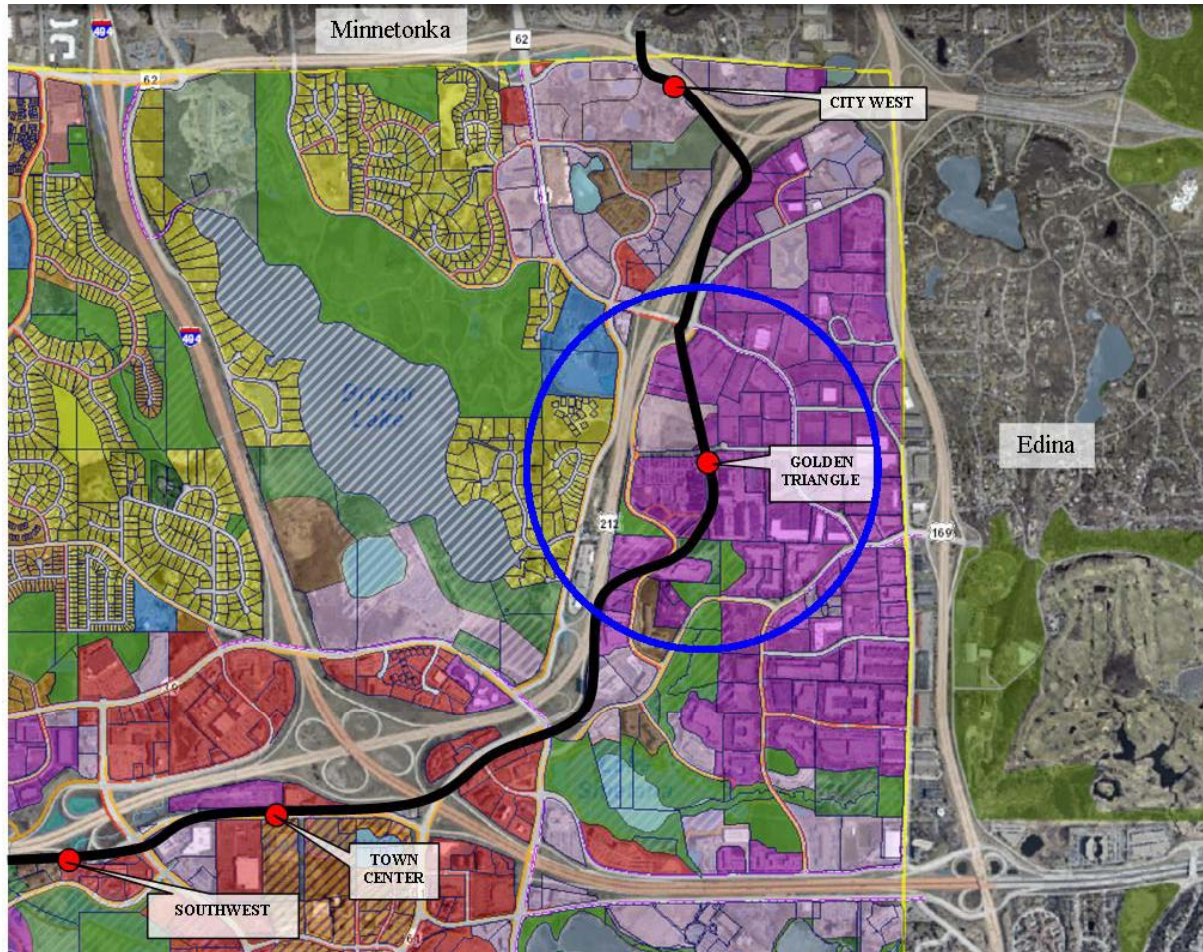
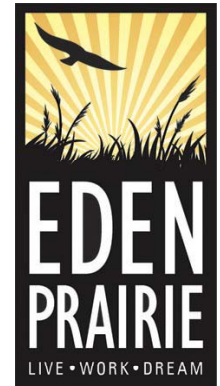




Golden Triangle Station



Station Location Overview



Demographics

Households: 234*

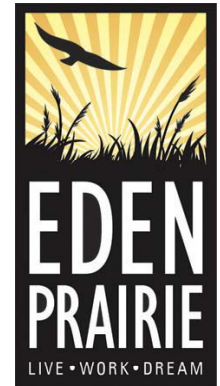
Employment: 3,235**

Population: 421*

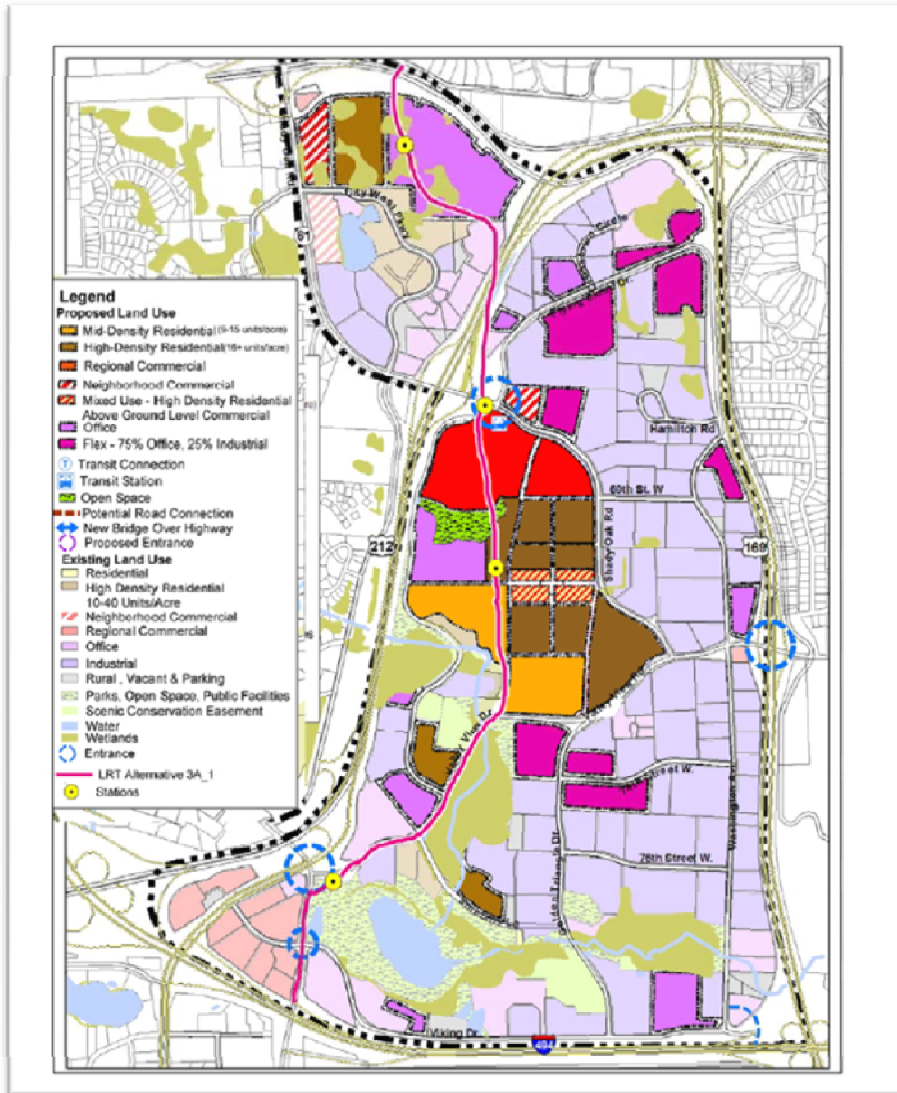
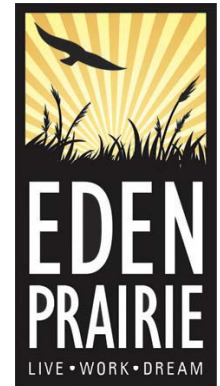
*Source: City of Eden Prairie 2012

** Source: Q2 2010 MN Dept. of Employment & Economic Development (Within a ½ mile of the station stop. There are approximately 20,000 jobs in the larger business park.)

Buildings Near Station Area



Golden Triangle Study

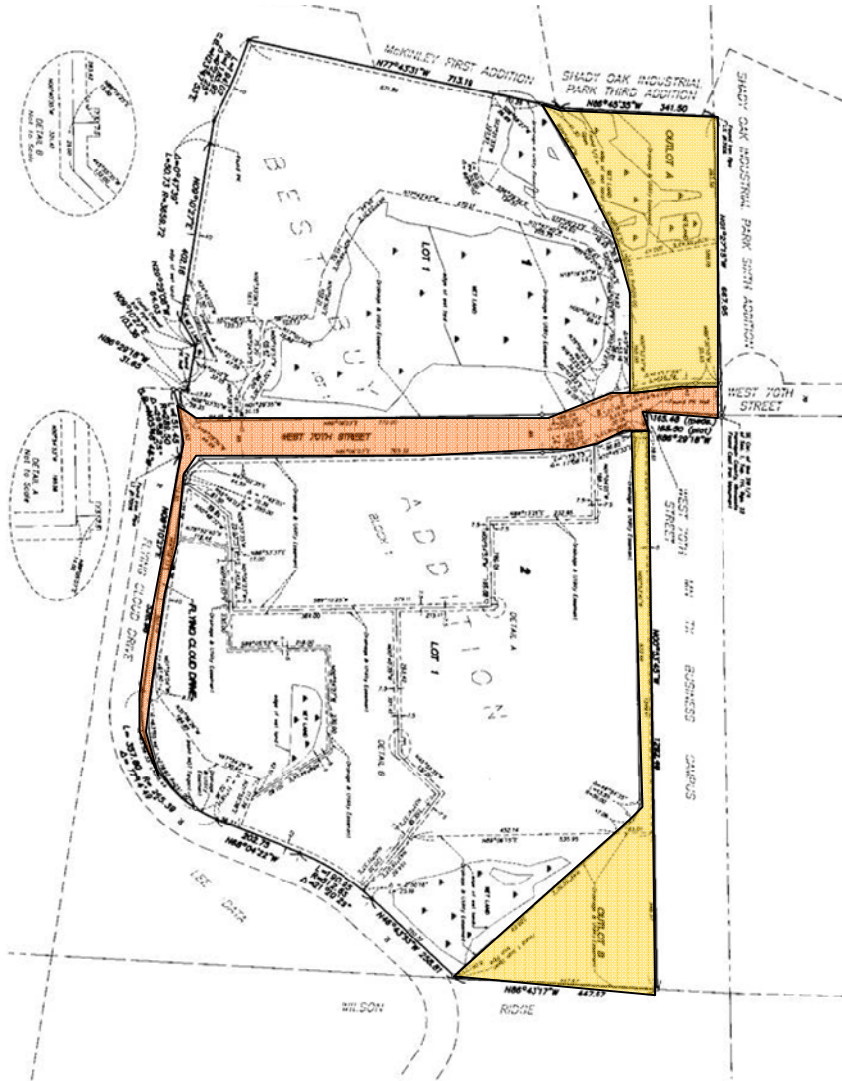
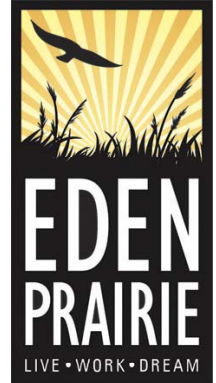


Land Use Acreage in the GTA

Half TOD	Acres
Residential	144
Neighborhood Commercial	14
Regional Commercial	71
Office	165
Industrial	451
Parking	26
Parks and Open Space	105
Mixed Use	10
Total	976

Liberty Plaza

LRT Outlot and W. 70th Street



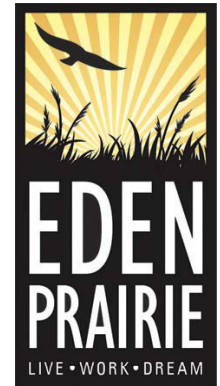
Existing

250,000 Sq. Ft. of Office

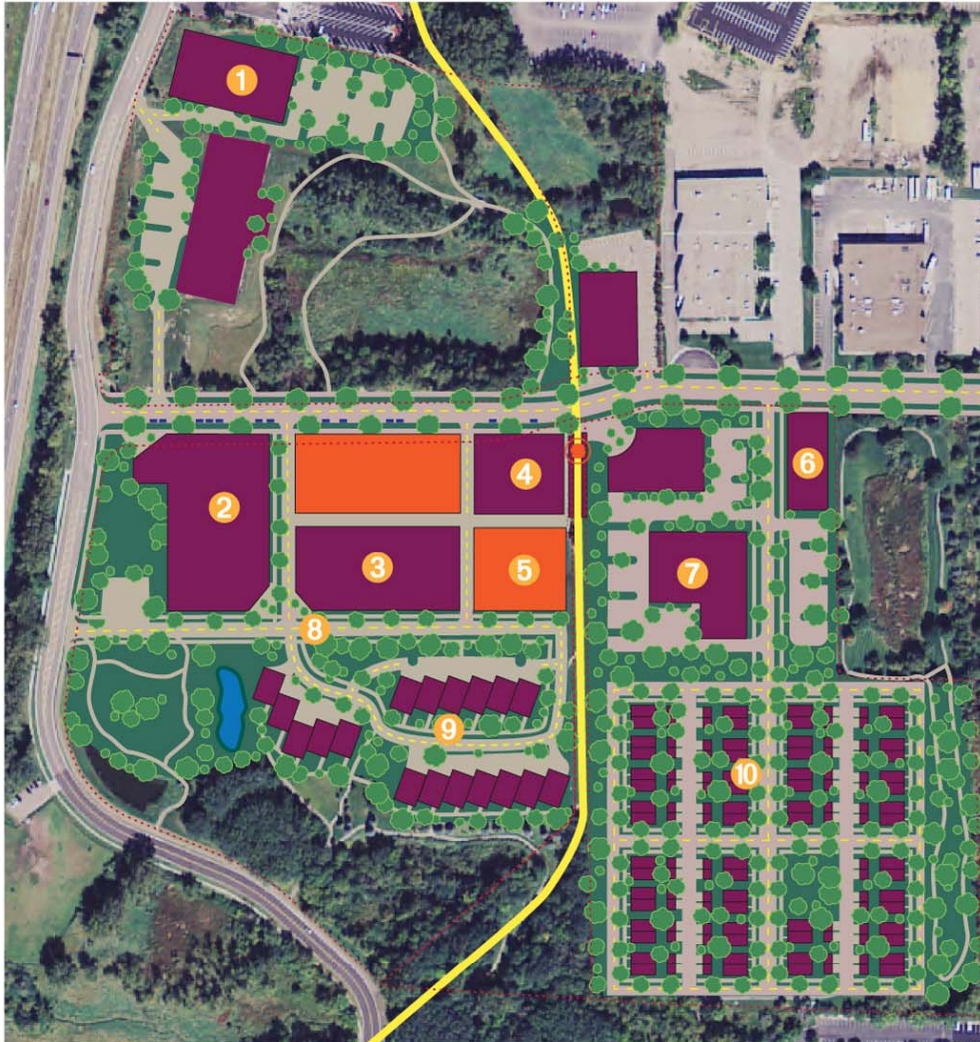
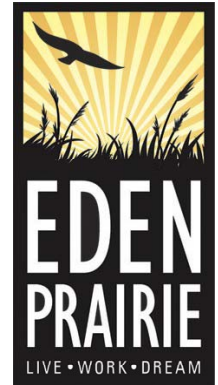
Planned

135,000 Sq. Ft. of Office

West 70th Street



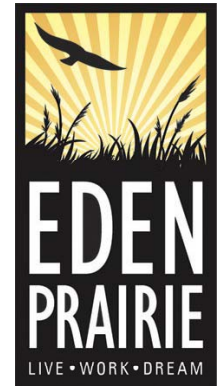
Capstone Project



GOLDEN TRIANGLE STATION AREA: PHASE 2

- 1 Hotel (100 to 150 rooms)
- 2 Office (360k to 450k sq/ft)
- 3 Office (185k to 250k sq/ft)
- 4 Office (70k to 140k sq/ft)
- 5 Structured Parking (300 to 600 spaces)
- 6 Office (60k to 100k sq/ft)
- 7 Live/Work Housing, Community Center
- 8 Connectivity Improvements
- 9 Affordable and Market Rate Apartments (72 to 108 units)
- 10 Workforce Housing Townhome Units

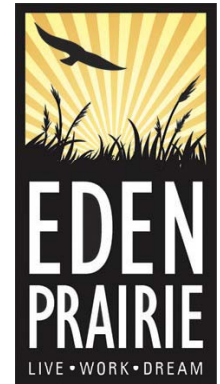
Capstone Project



NATURAL ENVIRONMENT SYSTEM MAP

- 1 Natural Stormwater Infrastructure
- 2 New Dark Sky Compliant Street Lighting & Solar Traffic Signals
- 3 Reduced Setbacks
- 4 Green Roof
- 5 Expanded Green Space
- 6 Native Landscaping
- 7 Boulevard Trees with Tree Wells
- 8 Compact Design
- 9 Passive Solar Designed Apartments
- 10 Pervious Parking & Sidewalk Pilot Project

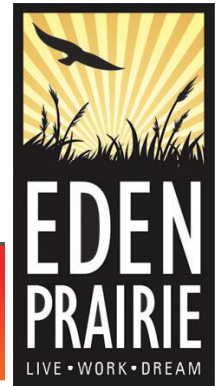
Capstone Project



CONNECTIVITY SYSTEM MAP

- 1 Shared bike trails
- 2 Upgraded pedestrian infrastructure
- 3 Improved trail network
- 4 Traffic Calming
- 5 Bike sharing program
- 6 Bicycle storage facilities
- 7 Improved connections between uses
- 8 Rear parking lots

Sustainability Assessment



HISTORIC CENTENNIAL NEIGHBORHOOD


LAFAYETTE, IN

SUSTAINABLE NEIGHBORHOOD ASSESSMENT May 14 - May 16, 2012

Sustainable Neighborhood
Assessment Using LEED-ND

Through the Sustainable Neighborhood Assessment Tool developed by Global Green USA, public officials and local government staff are using the LEED for Neighborhood Development (LEED-ND) rating system to determine ways that future development in their communities can achieve high levels of environmental, economic, and social sustainability. LEED-ND integrates the principles of smart growth, walkable urbanism and green building into the first national rating system for neighborhood design. In Lafayette, IN, the Global Green team used the assessment tool to evaluate existing conditions, and plans for the City's Historic Centennial Neighborhood-building upon efforts already underway, to increase sustainability.


ENVIRONMENTAL PROTECTION AGENCY
Technical Assistance provided by Global Green USA with Agora Group and the US Green Building Council to the City of Lafayette was made possible through funding from the US EPA's Office of Sustainable Communities Building Blocks for Sustainable Communities Grant Program.





Contents

- Assessment Process P.1
- Neighborhood Background P.2
- Catalytic Projects P.3
- Preserve Character P.4
- Improve Connections P.6
- Meeting Place P.9
- Environmental Performance P.11
- LEED-ND Checklist P.13
- Workshop Notes P.17


Assessment Area








AGORA GROUP



GLOBAL GREEN USA



USGBC

Recommendation 2

RESPONSIBLE DEPARTMENT
Engineering Department

Improve Connections Within and Outside the Neighborhood

The largest category within LEED-ND, in terms of points, is Neighborhood Pattern & Design (NPD). This credit category emphasizes the creation of compact, walkable, vibrant, mixed use neighborhoods with connections to nearby assets. These attributes are vital to creating a sustainable neighborhood by using infrastructure and land more efficiently, therefore reducing driving while promoting



Improve Connections Within and Outside the Neighborhood

Recommendations:

- Short-Term**

 - Paint a sharrows on 6th Streets and stripe bike lanes on 3rd, 4th, 5th, and Union Streets per the Bike Lane dimensions on the Recommended Performance Metrics table on page 8. Ensure that sufficient right of way is earmarked for dedicated on-street bike lanes on 3rd and 4th Streets during any future street reconfiguration.
 - Provide bus shelters at bus stops on 4th, 6th, and Brown Streets per the transit shelter standards in the Recommended Performance Metrics table on page 8.
 - Establish a car share station at the Citybus transfer center to meet the needs of downtown and Historic Centennial Neighborhood residents. Car Share companies targeting university adjacent neighborhoods may be ideal companies to target to complete the new multi-modal transit hub.

Long-Term

 - Increase both the actual and perceived connection to Purdue University in Lafayette by constructing the Brown pedestrian and bicycle bridge and proximity of Historic Centennial Ne graduate students at Purdue Univer
 - Better connect the trail system along River in order to provide Historic Ce Neighborhood residents with access significant open space resource.



Limited bicycle access to West Lafayette and the regional trail due to the elevators found at Rietveld Plaza's entrance to the John T. Myers Pedestrian Bridge.



Diminished a

Improve Connections Within and Outside the Neighborhood

	RECOMMENDED PERFORMANCE METRICS*		
	SIDEWALK	BIKE LANES	BIKE PARKING
DIMENSIONS	6 feet or more or three-foot sidewalks 4 feet on all other bases (widths are inclusive of gutter strips)	Designate 2 feet on street lanes or one-way path on-trail, or 6-foot (off-street) facility path or trail	N/A
EVIDENCES	Sum of recycled content equals 35% of mass of the total plastic used for new sidewalks High abrasion resistant material (reflective coefficient or white/white)	Designate streets with a design speed of 25 mph or slower as part of the bike network	Shelter: 1 enclosed storage space per 100 sq ft of total shelter planned occupancy Shelter: 1 space per 1,000 sq ft of total shelter planned occupancy Shelter: 1 enclosed storage space per new retail worker for 10% of total shelter planned occupancy Shelter: 1 space per 10,000 sq ft of new commercial non-retail space Shelter: 1 Changing Facility: Provide one on-site shower and changing facility for developments with 100 or more new workers and at least 1 bathroom/shower for every 100 new workers thereafter
TRANSIT SHELTERS	N/A	N/A	Internals averaging 40 feet on center (excluding overhangs and utility vaults)
STREET LIGHTING	N/A	N/A	Internals averaging 40 feet on center (excluding overhangs and utility vaults)
STREET TREES	Covered shelter, with lighting and seating 150sq ft minimum (including landscaping) Booth for parking transit information	15% annual energy reduction below conventional infrastructure forms *Not for event lighting	Noninvasive species, soil volume, root medium, and soil media

*Planned Occupancy: minimum planned occupancy for multi-unit residential buildings is 1 person for a studio unit, 1.5 persons for a 1-bedroom unit, and 1.25 persons per bedroom for a 2-bedroom or larger unit (LEED-ND Reference Guide, pg 471)
 **Recommended but not a LEED-ND standard



Guides to Commenting on the DEIS



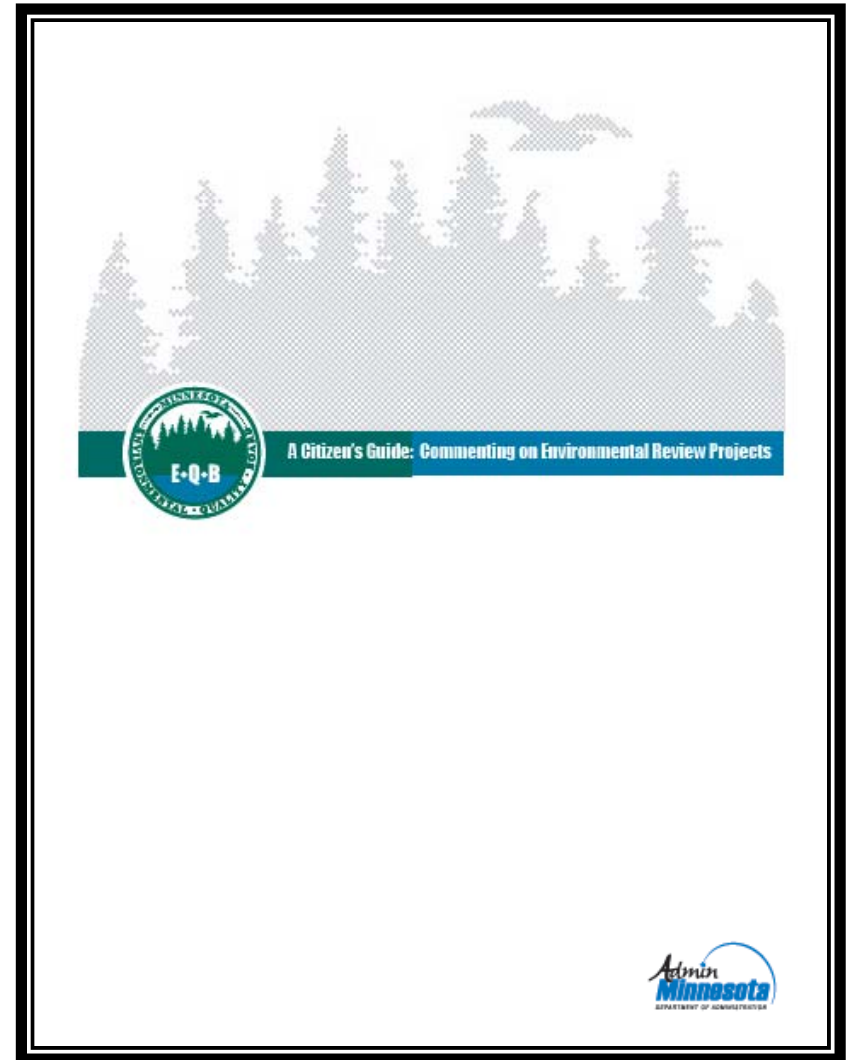
DEIS Update: Public Hearing dates/locations

- 11/13/12, Hennepin County Government Center, 300 Sixth Street, Room A-2400, Public Service Level (Skyway Level)
 - *4:30 PM, Formal Public Hearing
 - 11/14/12, St. Louis Park City Hall, 5005 Minnetonka Blvd.
 - *6:00 PM, Formal Public Hearing
 - 11/29/12, Eden Prairie City Hall, 8080 Mitchell Road
 - *6:00 PM, Formal Public Hearing
- *An Open House is scheduled prior to each Public Hearing**



DEIS Comment Guides

- Environmental Quality Board's A Citizens Guide: Commenting on Environmental Review Project
- Electronic copies available at:
www.southwesttransitway.org/project-progress-past-a-future.html





DEIS Comment Guides

- Electronic copies available at swlrt.org
- Details:
 - Topics covered by the DEIS
 - Hard copy availability for public review
 - How and where to send comments
 - Public hearing dates/times
 - Translation/ADA accommodations



Guide to Commenting on the Draft Environmental Impact Statement (DEIS)

Federal and state environmental rules require that an Environmental Impact Statement (EIS) be prepared for the proposed Southwest Transitway project. The EIS process includes the preparation of a Draft Environmental Impact Statement (DEIS), which must be made available for public review and comment.

The DEIS discusses: (1) the purpose and need for the project; (2) the alternatives considered; (3) the impacts of these alternatives; and (4) the agencies and persons consulted.

Comments on the DEIS will be accepted through December 11, 2012. Comments on the DEIS may be submitted through email, mail, or in person at one of the public hearings that will be held specifically for that purpose. To learn more about ways to comment on the DEIS, see "How to Comment on the DEIS."

Public hearings on the DEIS will be held in November 2012. To learn more about the hearings, see "Public Hearings."

Obtaining a Copy of the DEIS

The DEIS is available from Hennepin County's Southwest Transitway website at: <http://www.southwesttransitway.org>

Printed copies of the DEIS are available for public review at several locations:

<p>Hennepin County Housing, Community Works & Transit 701 Fourth Avenue South, Suite 400 Minneapolis</p> <p>City Halls</p> <p>Minneapolis: 350 South Fifth Street St. Louis Park: 5005 Minnetonka Boulevard Hopkins: 1010 First Street South Edina: 4801 West 50th Street Minnetonka: 14600 Minnetonka Boulevard Eden Prairie: 8080 Mitchell Road</p>	<p>Southwest LRT Project Office 6465 Wayzata Boulevard, Suite 500 St. Louis Park</p> <p>Libraries</p> <p>Central: 300 Nicollet Mall, Minneapolis Eden Prairie: 565 Prairie Center Drive Edina: 5280 Grandview Square Franklin: 1314 East Franklin Avenue, Minneapolis Hopkins: 22 Elovonh Avenue North Minnetonka: 17524 Excelsior Boulevard Sumner: 611 Van White Memorial Blvd., Minneapolis St. Louis Park: 2240 Library Lane</p>
---	--



Next Steps

- Hennepin County collects comments
- Following the close of the comment period, Hennepin County will turn over all the comments received to the Met Council
- The Federal Transit Administration (FTA) and the Met Council will consider all comments submitted and provide responses to substantive comments during the Final Environmental Impact Statement (FEIS)



Project Updates

- Preliminary Engineering Consultant Procurements – J. Alexander
- TSAAP – K. Walker



Member and Committee Reports; Public Forum

- SWLRT Corridor Management Committee (swlrt.org)
 - October 3 meeting cancelled
 - Next scheduled meeting: November 7
- SWLRT Community Business Committee (swlrt.org)
 - October 10: SWLRT “101” and LRT “101”, DEIS update
- Community Works Steering Committee (southwesttransitway.org)
 - October 18: St. Louis Park City Hall, 1:30 – 3:00 PM: **meeting cancelled**
- Public Forum



More Information



Website: www.swlrt.org

Email: swlrt@metrotransit.org