



Construction Update: September 13, 2019

Web: swlrt.org

Twitter: [@SouthwestLRT](https://twitter.com/SouthwestLRT)

Construction Hotline: 612-373-3933

Golden Triangle Nighttime Piling Work Resumes in Eden Prairie

Beginning the week of September 16, nighttime piling in the Golden Triangle area will resume to construct the Golden Triangle Station north of West 70th Street and a bridge over Shady Oak Road and Hwy 212. Due to vibration sensitive businesses in the area, night piling is needed for a portion of this work in the immediate area. Generally, crews will start nighttime work at 1:00 AM. Construction work could start earlier in the night if schedules permit. The Southwest LRT project worked with the contractor to develop and test various noise reduction strategies for nighttime pile driving activities, but residents may be able to hear construction activities. Please note, nighttime pile driving activities could last up to four months. Daytime piling work is ongoing and will continue until summer 2020. We appreciate your patience while we complete this necessary work.

Weekly Construction Photo: Louisiana Avenue



Crews constructing center bridge piers for the spans over Louisiana Avenue. Freight rail, light rail and the regional trail will all be on bridge structure over the roadway, much like today. Crews will be shifting lane closures to continue work on the bridge abutments.

Upcoming Work

Minnehaha Creek Trail Bridge in St. Louis Park

Beginning the week of September 16, crews will begin demolishing the regional trail bridge that spans Minnehaha Creek in St. Louis Park. Demolition and preparation work will take about six weeks and then work will start on the new bridge. Flaggers will be monitoring recreational water use as there will be times that work makes it unsafe to travel through the area in the creek. Individuals using the waterway will encounter intermittent closures lasting approximately 20 minutes during construction activity.

On-going Activities Update

SouthWest Station in Eden Prairie

The temporary passenger drop-off lanes at SouthWest Transit Station have been moved to the west end of the parking structure. SouthWest Transit Station and buses are operating as usual. Pile driving for utility work near the former Culver's site has begun.

Prairie Center Drive/Eden Road Area in Eden Prairie

Crews continue to perform ongoing grading and retaining wall work. Piling work will begin mid-September. Utility companies are also working in the area and near Flying Cloud Drive towards the east.

LRT Bridge at I-494/Flying Cloud Drive in Eden Prairie

The installation of sheet piling for pier construction for the new LRT bridge has begun and traffic control barriers are in place. The work on the center pier is ongoing, progressing well for crews to pour bridge columns. The I-494 eastbound ramp to TH 212, which closed the week of August 12, will remain closed for up to seven weeks for this work. **See detour map below.** While traffic control barriers will be in place, please remember to observe the posted speed limit to help ensure the safety of other motorists and our crews.

TH 62 in Minnetonka

Preparation work for the LRT tunnel under TH 62 has begun. Crews are working on installing temporary drainage and are preparing the median for future lane shifts to consolidate both east and westbound traffic on south side of the highway. Expect traffic delays as periodic lane closures and traffic shifts occur. Once traffic is shifted to south side of the highway, LRT tunnel construction can commence.

Smetana Road in Minnetonka and Hopkins

Smetana Road from Feltl Court to Feltl Road closed on August 21 for six weeks **(see detour map below)**.

Following this six-week closure, Smetana Road from Feltl Road to Nolan Drive will be closed for up to a year. Signs will be posted seven days before each closure.

Minnesota River Bluffs Regional Trail in Hopkins

The Minnesota River Bluffs Regional Trail in Hopkins is now closed between Shady Oak Road and 5th Avenue South. **See detour map below.**

- The section between 11th Avenue South and Shady Oak Road is closed due to storm sewer construction activities. This portion of the trail may be closed for approximately one year. Crews continue to look at options to reduce the duration of this closure.
- The section between 8th Avenue South and 5th Avenue South is closed until Fall 2021.

Excelsior Boulevard Area in Hopkins

Excelsior Boulevard at the freight railroad crossing closed on Friday, September 6 to all vehicle traffic and will remain closed for approximately one month, through early October. Expect traffic delays in this area. **See detour map below.** Additional closures will be needed later in the Fall to complete this phase of activity. Signs will be posted seven days before each closure.

Blake Road in Hopkins

Crews are working to construct a tunnel for the regional trail. Blake Road southbound lanes are closed, and traffic is diverted to the east side of the road, with one lane in each direction, which will last for approximately 6 months. Once work is complete on the south-bound side of the road, work will shift to the north-bound side of the road and traffic will be diverted to the other side of the road.

Louisiana Avenue in St. Louis Park: Upcoming Pedestrian Detour

Vehicle traffic is reduced to one lane in each direction as crews have shifted lanes to work on abutments; expect sheet piling activity in the area. Starting the week of September 16, the sidewalks on both sides of Louisiana Avenue will be closed and a pedestrian detour will be in place. **See pedestrian detour map below.**

TH 100 in St. Louis Park

The project will be re-positioning the existing freight rail bridge and will build a new LRT bridge over TH 100. Center pier bridge work began the week of August 12 and traffic was shifted to create a workspace in the median area of TH 100. Crews are working to complete construction for the median pier. Nightly lane closures on TH 100 are anticipated. Traffic lanes are anticipated to shift back to their original position this weekend. Expect to see fencing and erosion control work as well.

Beltline Boulevard in St. Louis Park

Work on the new Cedar Lake Trail Bridge has begun. Crews are excavating for bridge abutments and performing pier work.

Cedar Lake Trail

Cedar Lake Trail through Hopkins, St. Louis Park, and Minneapolis is closed in three segments until Fall 2021 (**see detour maps below**). The Cedar Lake Trail will remain open between France Avenue in St. Louis Park and Kenilworth Trail/Midtown Greenway intersection in Minneapolis. The Midtown Greenway will remain open. Currently, cross streets remain open to automobiles, bikes and pedestrians, with separate closure of roadways upcoming at various dates. The trail is closed between these segments:

- Between just east of the North Cedar Lake Trail connection in Hopkins to France Avenue in St. Louis Park.
- Minneapolis from Linden Yards located west of Van White Boulevard to east of Royalston Avenue.

Kenilworth Trail Closure

The Kenilworth Trail is closed in Minneapolis until Summer 2022. At this time, automobiles, bikes and pedestrians will continue to cross at Cedar Lake Parkway and at W 21st Street.

- The Kenilworth Trail is closed at the intersection with the Midtown Greenway and extends northeast to just south of W 21st St.

Cedar Lake Parkway in Minneapolis

Cedar Lake Parkway at the Kenilworth Corridor closed on September 9 to vehicle traffic to shift the freight tracks and conduct watermain work. The closure is expected to last six days and the road is anticipated to open on

schedule after work is complete on Saturday, September 14. Saturday and Sunday work hours have been approved for the upcoming weekend from 9:00 AM to 8:00 PM. Crews will use this time to finish the roadway work and continue replacing railroad ties. The closure for freight track work is being coordinated with the watermain work to reduce the duration and minimize the impact to motorists. Pedestrians and bicycles will continue to have access across the Kenilworth corridor during the when Cedar Lake Parkway closure. **See detour map below.**

Burnham Road in Minneapolis

On August 26 crews cut into the roadway to continue watermain work and the roadway is closed to through traffic. Two-way traffic will continue to be allowed on Burnham Road Bridge during the detours. **See detour maps below.** Burnham Road will remain closed for an additional two weeks after Cedar Lake Parkway reopens, until late September. During this time watermain work will be completed. Water pressure may fluctuate during watermain work. Additional time is also needed because concrete is being used to construct the roadway instead of bituminous. Concrete will better tie into the existing roadway materials and help with future maintenance. However, it takes longer to construct and fully set before vehicle traffic can drive on it.

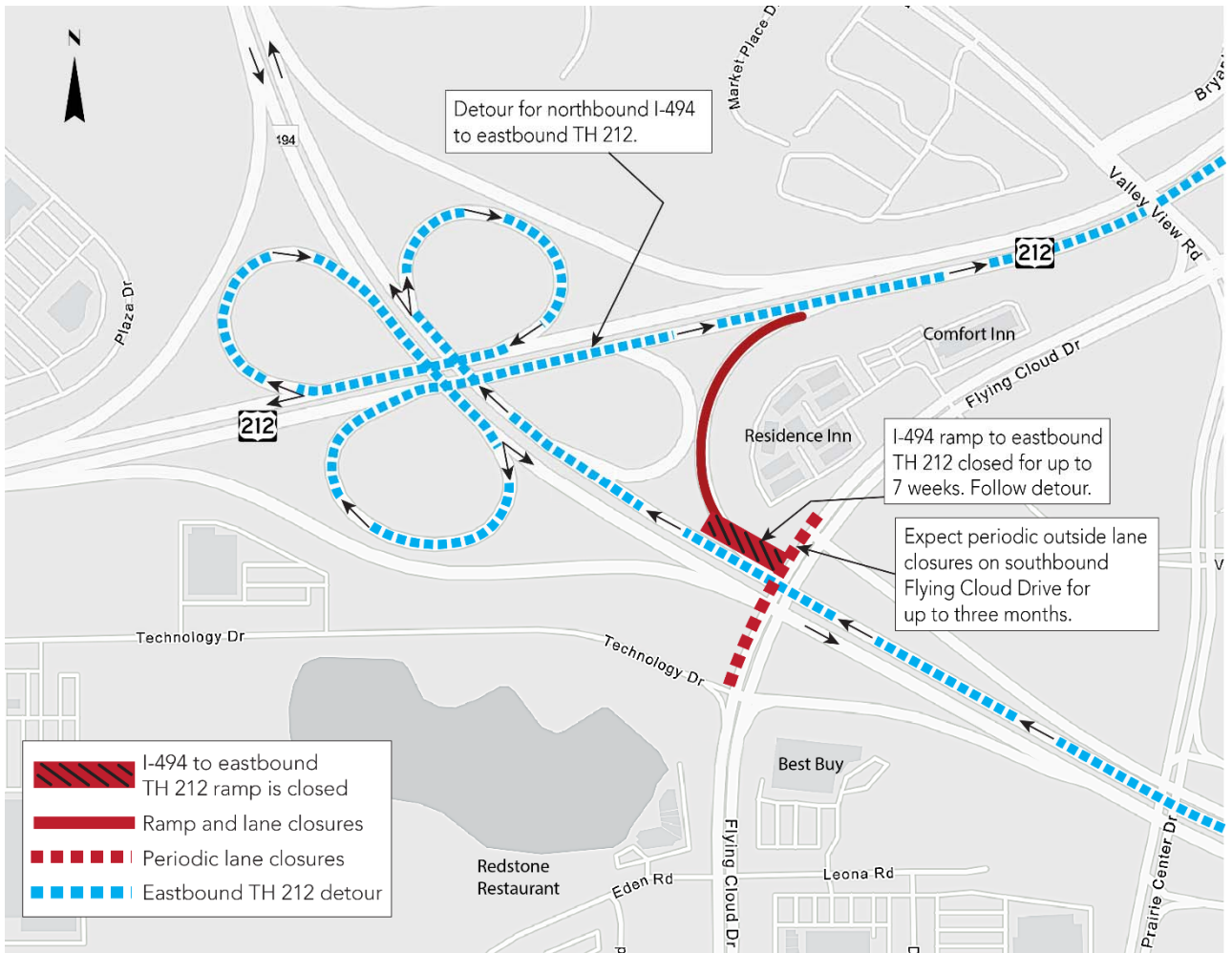
Cedar Lake (Kenilworth) Channel and Works Progress Administration (WPA) in Minneapolis

Shoring for bridge pier construction is being installed and piling is underway. Individuals using the waterway between Lake of the Isles and Cedar Lake will encounter intermittent closures lasting approximately 20 minutes during construction activity for approximately three weeks. A full closure of the Cedar Lake Channel is expected later this summer; a 14-day advanced notification will be provided prior to a full closure.

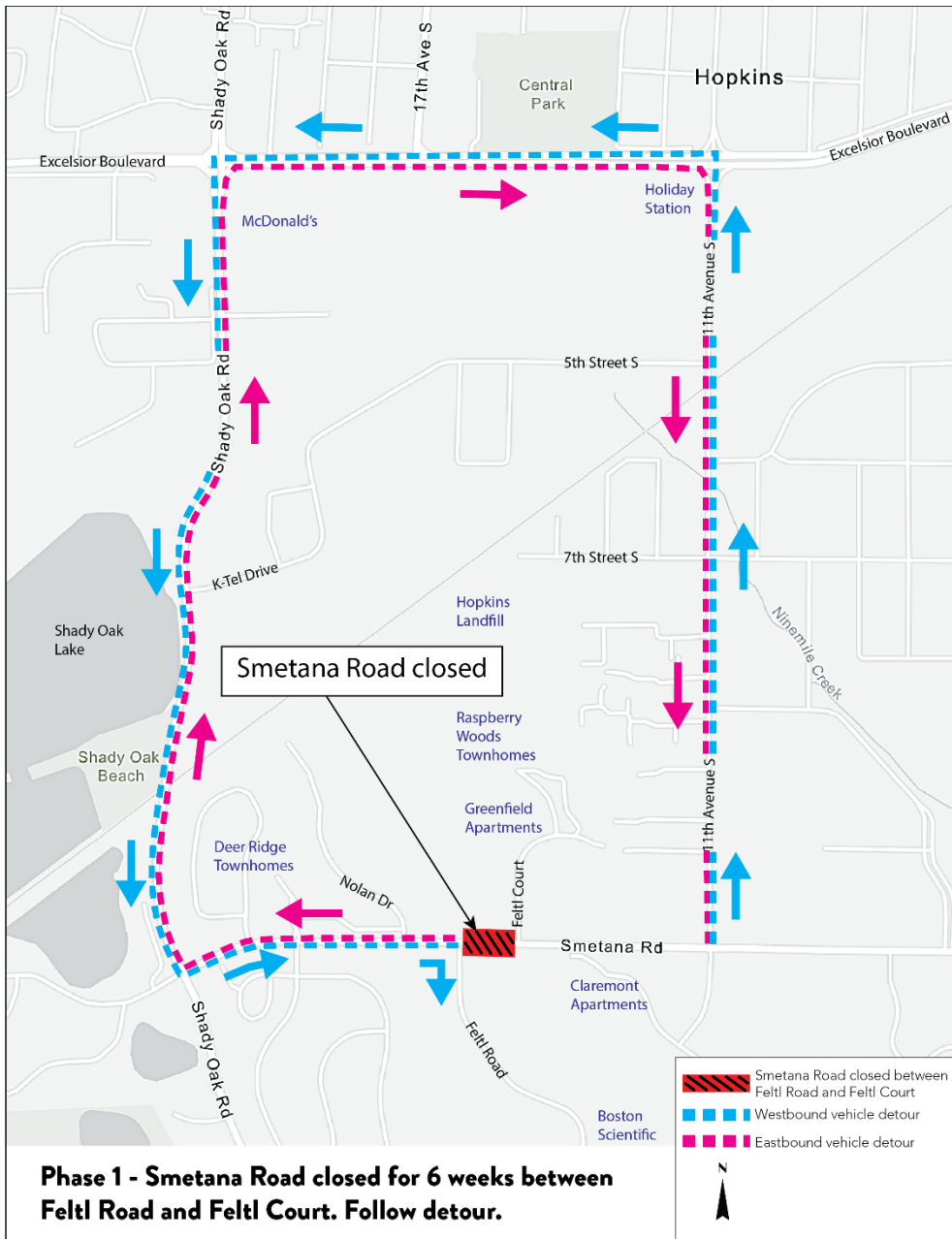
Glenwood Avenue in Minneapolis

The closure of Glenwood Avenue between Lyndale Avenue North and 11th Street North began on July 15, 2019 and will last approximately two years. Local access to businesses will be maintained. Generally, vehicle detours will use Lyndale Avenue, Olson Memorial Highway and 7th/10th Streets. The pedestrian detour will utilize Border Avenue, Holden Street and Royalston Avenue sidewalks. **See detour map below.**

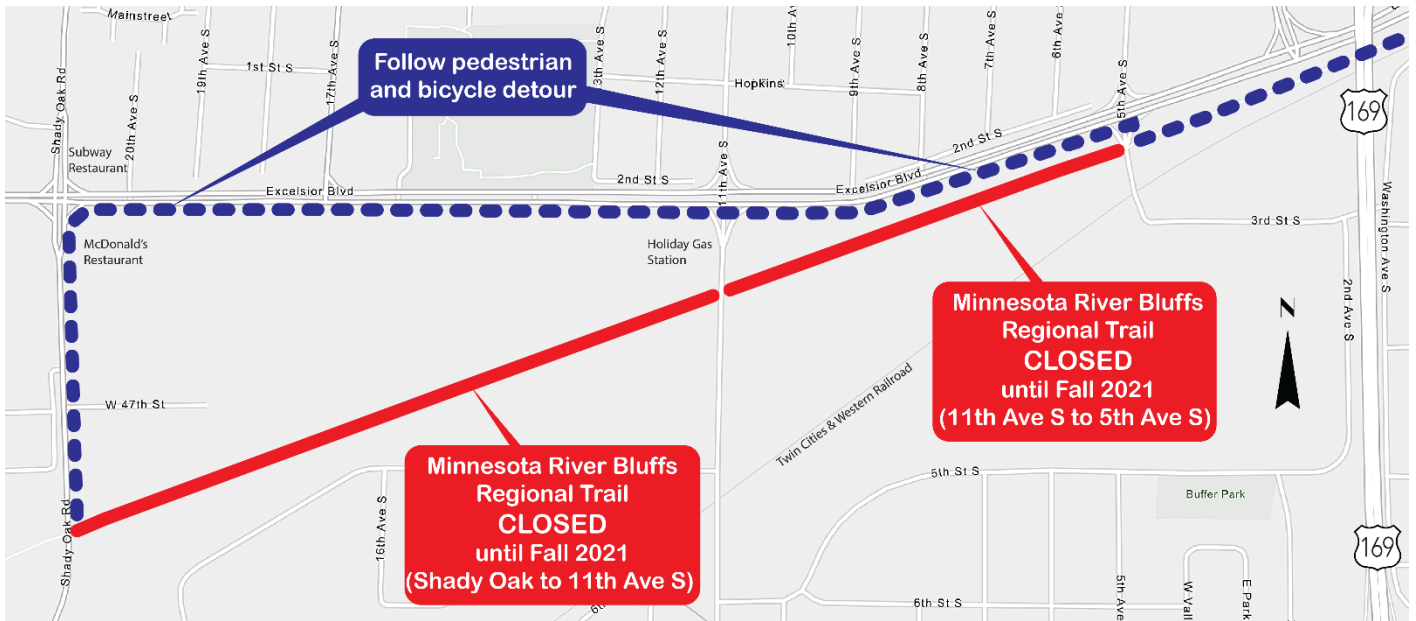
Northbound I-494 to Eastbound TH 212 Detour



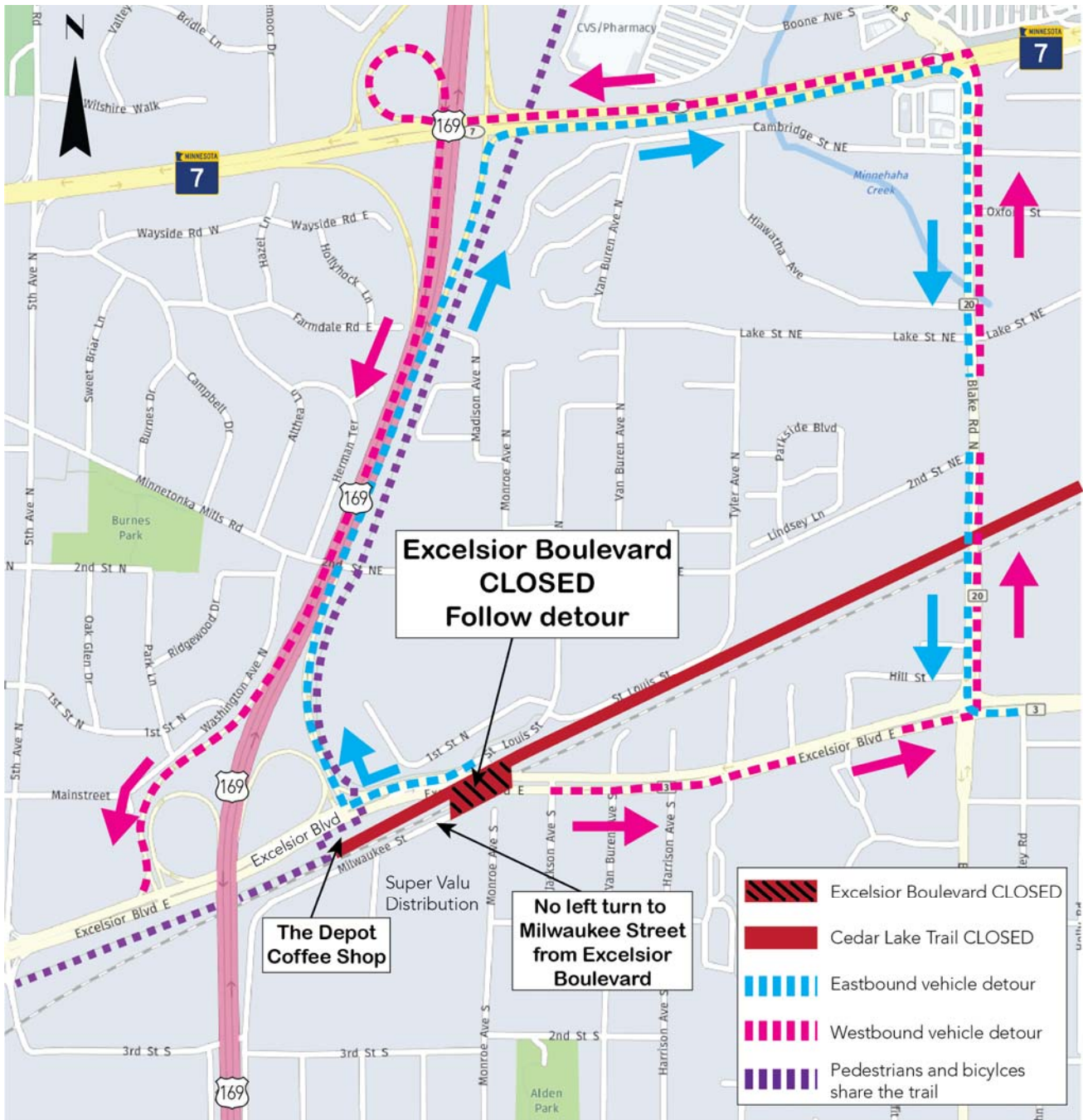
Smetana Road in Minnetonka and Hopkins Detour



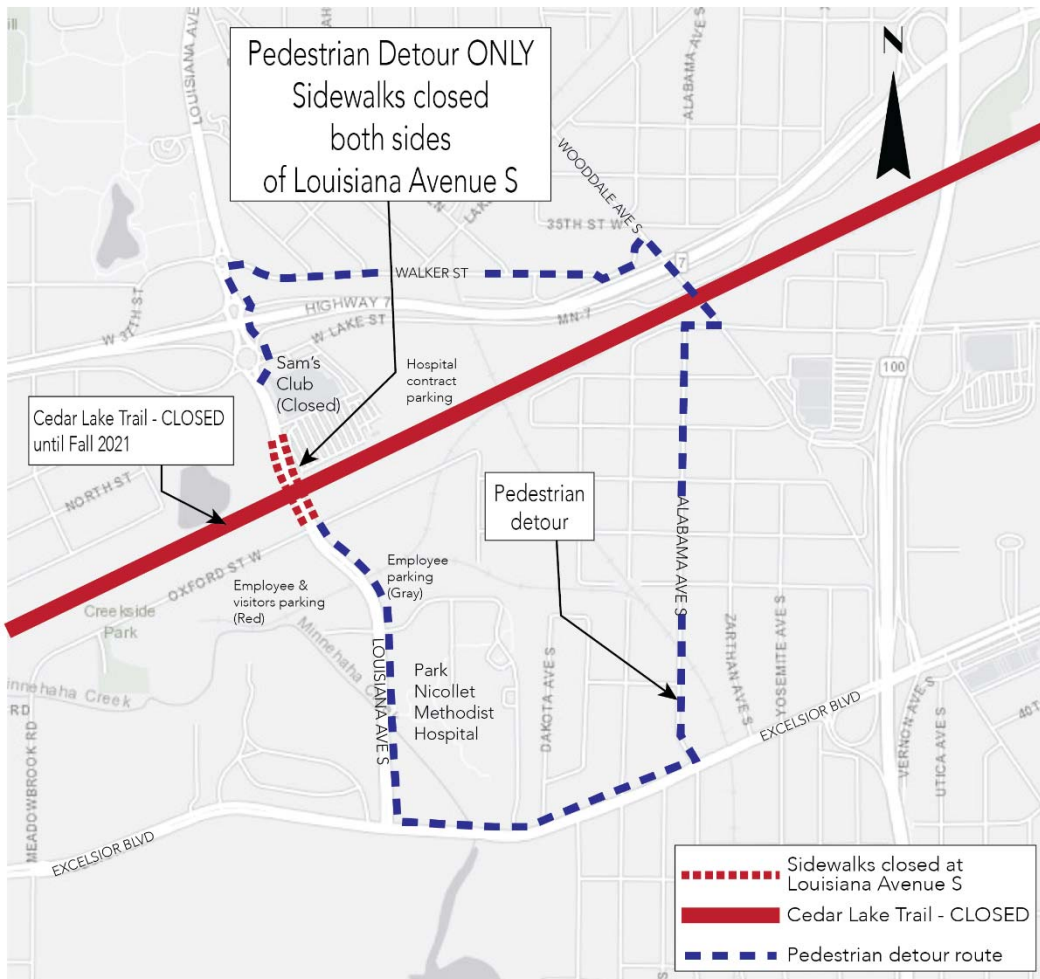
Minnesota River Bluff Trail from Shady Oak Road to 5th Avenue Detour



Excelsior Boulevard Detour

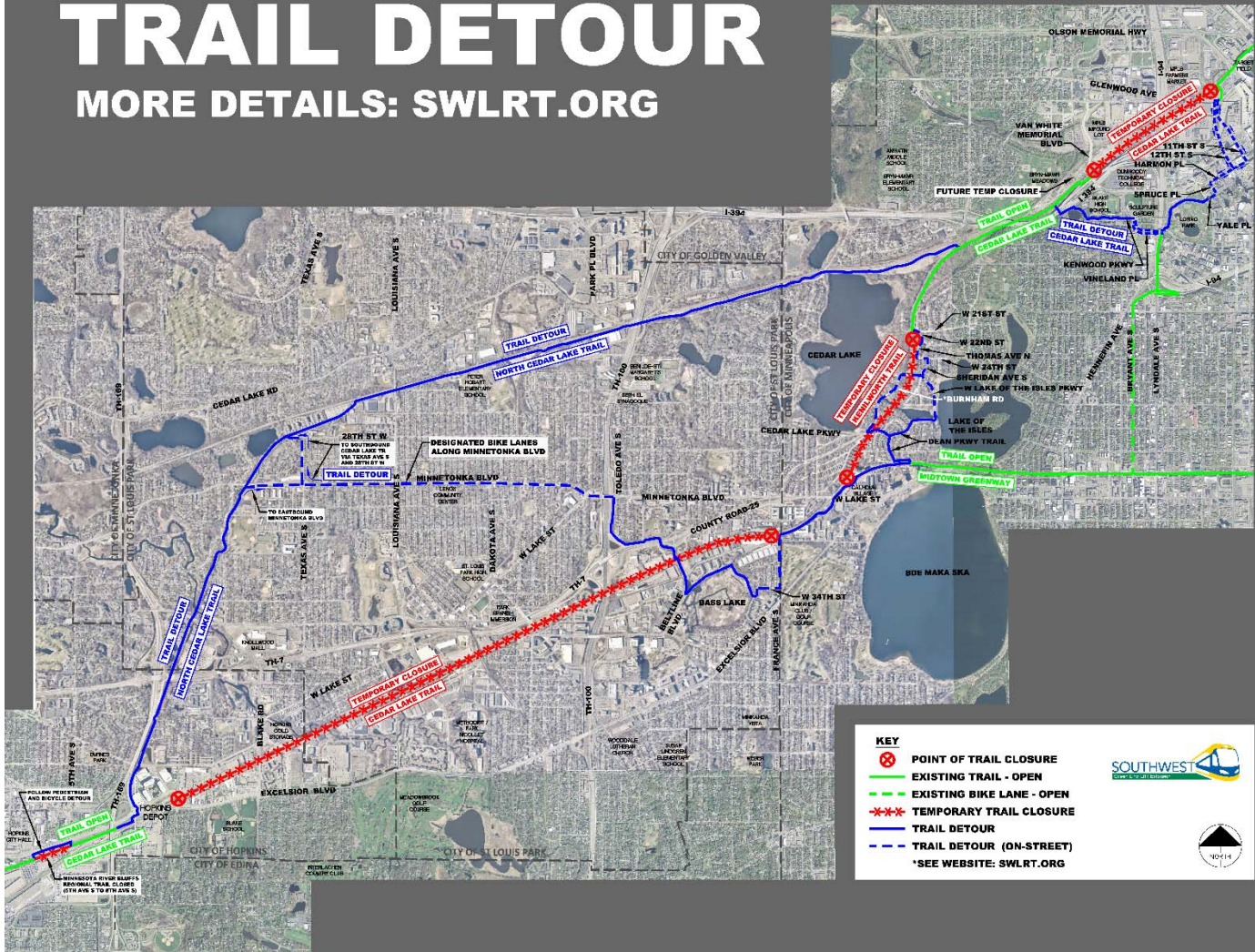


Louisiana Avenue in St. Louis Park Pedestrian Detour

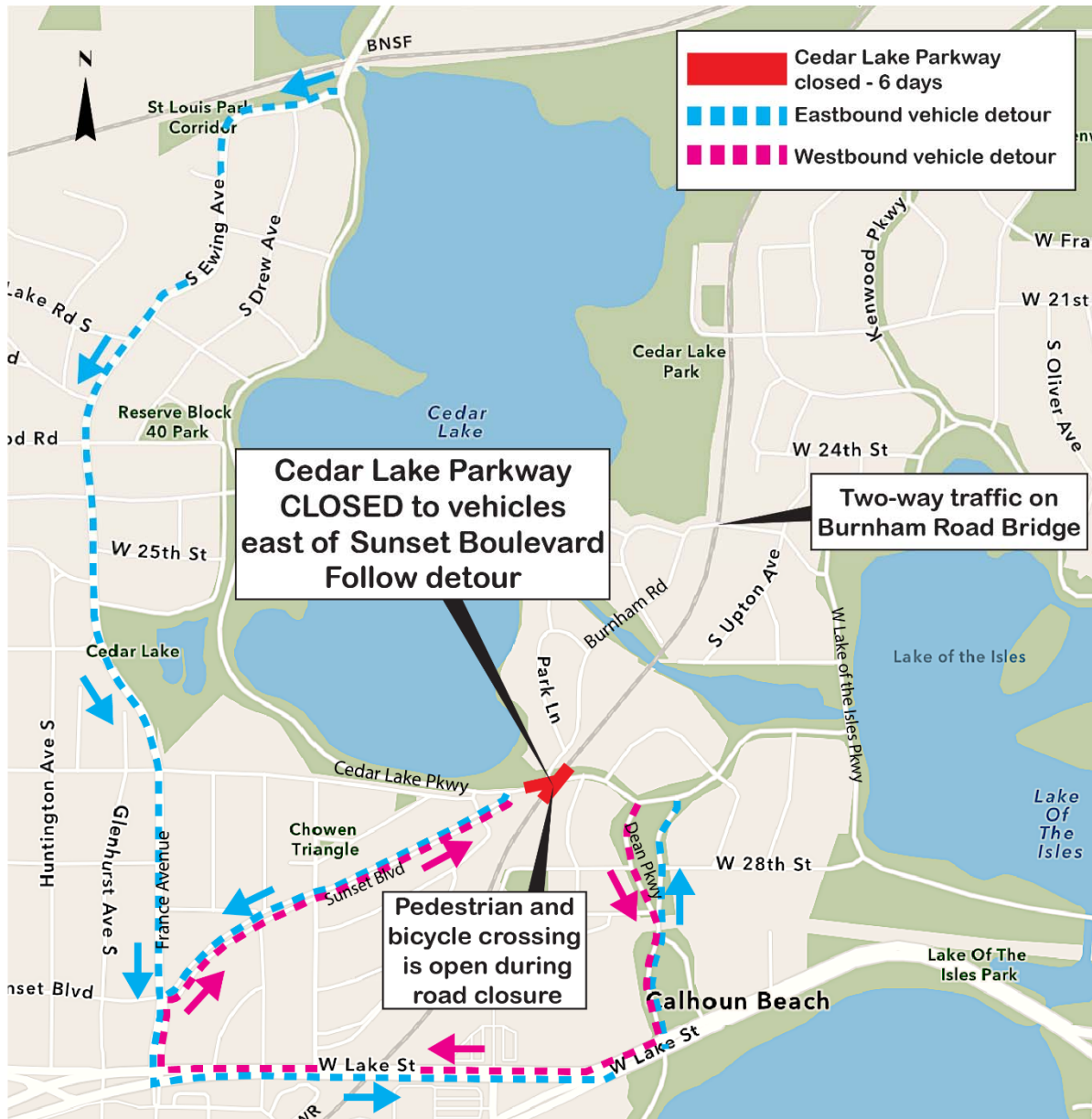


TRAIL DETOUR

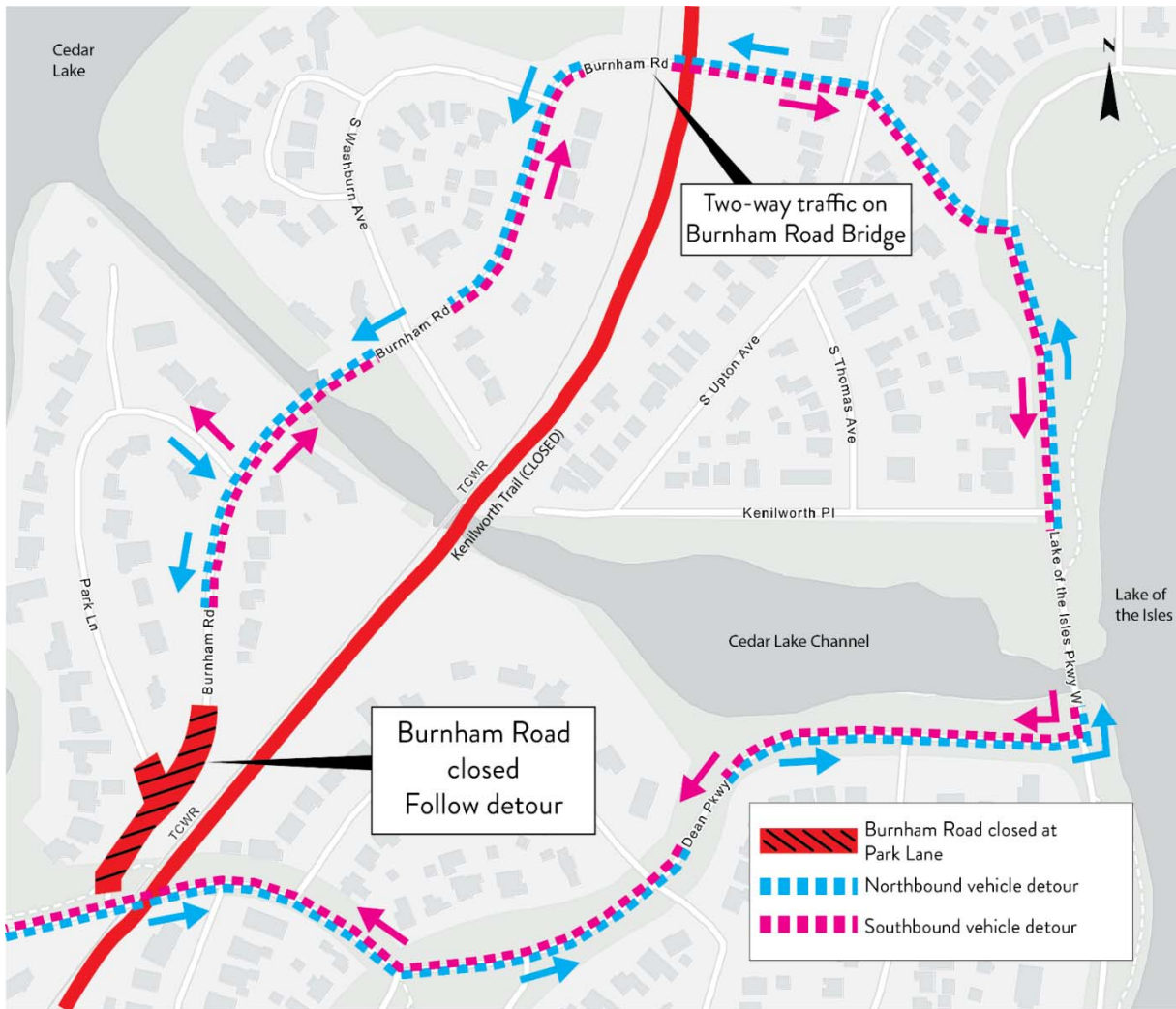
MORE DETAILS: SWLRT.ORG



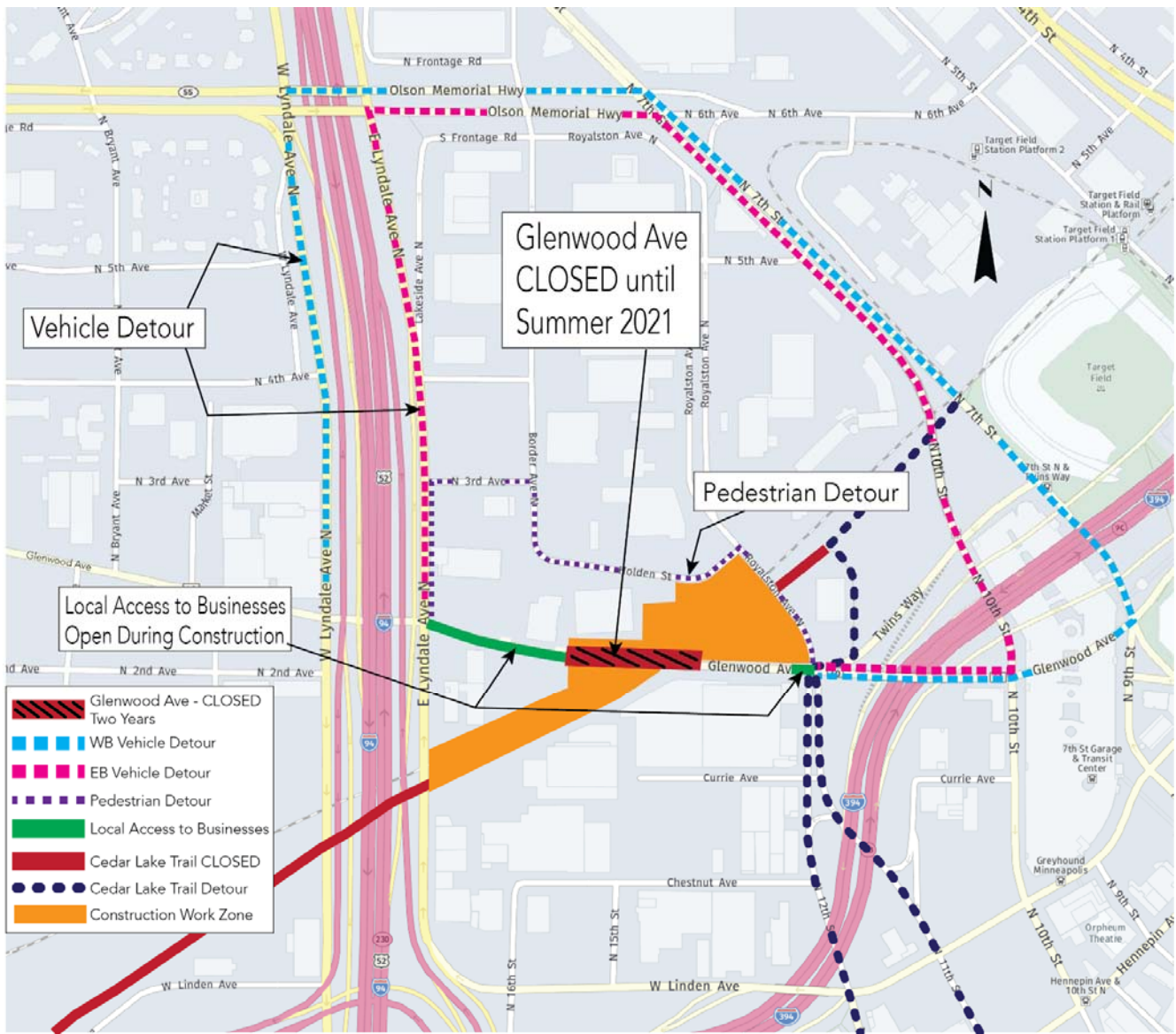
Cedar Lake Parkway in Minneapolis Detour



Burnham Road Closure at Cedar Lake Parkway in Minneapolis Detour



Glenwood Avenue in Minneapolis Detour



Cedar Lake Trail in Minneapolis Pedestrian and Bike Detour

