

SOUTHWEST

Green Line LRT Extension



# Corridor Management Committee

September 25, 2013



# Today's Topics

- Transportation Technology Center Inc. (TTCI) Update
- Operations and Maintenance Facility Update
- Project Budget Target



# Transportation Technology Center Inc. (TTCI) Update

# TTCI Meeting Update

- Toured MN&S and Kenilworth corridors with SPO, TTCI, county and city staff
- Held meeting with SPO, TTCI, railroads, county and city staff
  - Reviewed SPO generated freight rail relocation design options in detail
  - Discussed modeling process that analyzes track geometrics as well as acceleration and braking characteristics
  - Discussed Mayor Rybak's letter

# TTCI Meeting Update

- Outcome
  - Received feedback that work done to date was good and comprehensive
  - Determined by TTCI that they have a conflict of interest if they undertake this assignment

# Surface Transportation Board (STB)

- An economic regulatory agency Congress charged with resolving railroad rate and service disputes and reviewing proposed railroad mergers
- Jurisdiction over railroad rate and service issues and rail restructuring transactions (mergers, line sales, line construction, and line abandonments)
- Licensing jurisdiction over rail lines that extend into new territories or markets

# Surface Transportation Board (cont.)

- Board approval is required for
  - Extension into new territories or markets
  - Abandonments
    - Authorization based on Board's assessment of needs of railroads and shippers
    - Class exemption applies if no industries served on line for 2 years and if overhead traffic can be rerouted
- Board approval of certain rail construction **may not be** required when
  - No new industries being served (e.g., relocation, improvements to existing system)
  - Planned actions result in no disruption to shippers

# Surface Transportation Board (cont.)

- Parties with common carrier obligation, usually railroads, file with STB
  - Prior to filing, parties can meet with STB staff to determine agency's jurisdiction over a matter
  - Applies to party receiving rights or looking to abandon or construct
  - Applicants normally file once jurisdiction and scope of action (e.g., new construction, relocation) is determined



# Surface Transportation Board (cont.)

- STB approval and timeline depend on type of filing
  - Class exemption (construction/operation or abandonment)
  - Petition for exemption from full application (abandonment)
  - Full application (construction/operation or abandonment)

# Operations and Maintenance Facility (OMF) Update

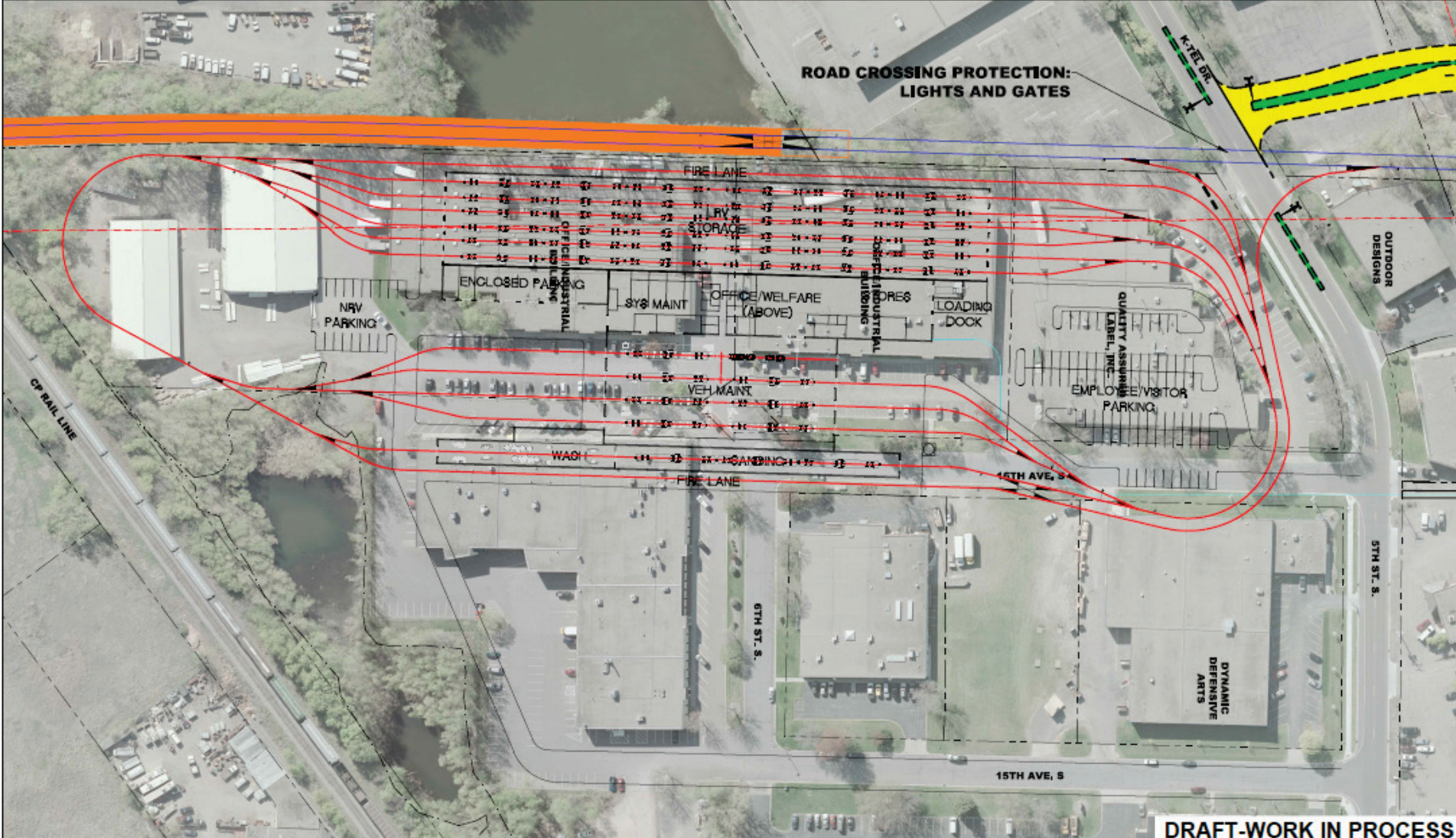
# OMF Update

- City's Aug. 28 letter addresses:
  - OMF and parking facility impacts to tax base
  - Shady Oak Station parking facilities
  - 17<sup>th</sup> St. extension
  - Downtown Hopkins Station bike amenities, public plaza and Excelsior Blvd crossings, enhanced bus shelters
  - Blake Station property acquisitions and trail underpass
- City and SPO staff met Sept. 18 and 20 to discuss potential solutions

# Hopkins: Shady Oak Station

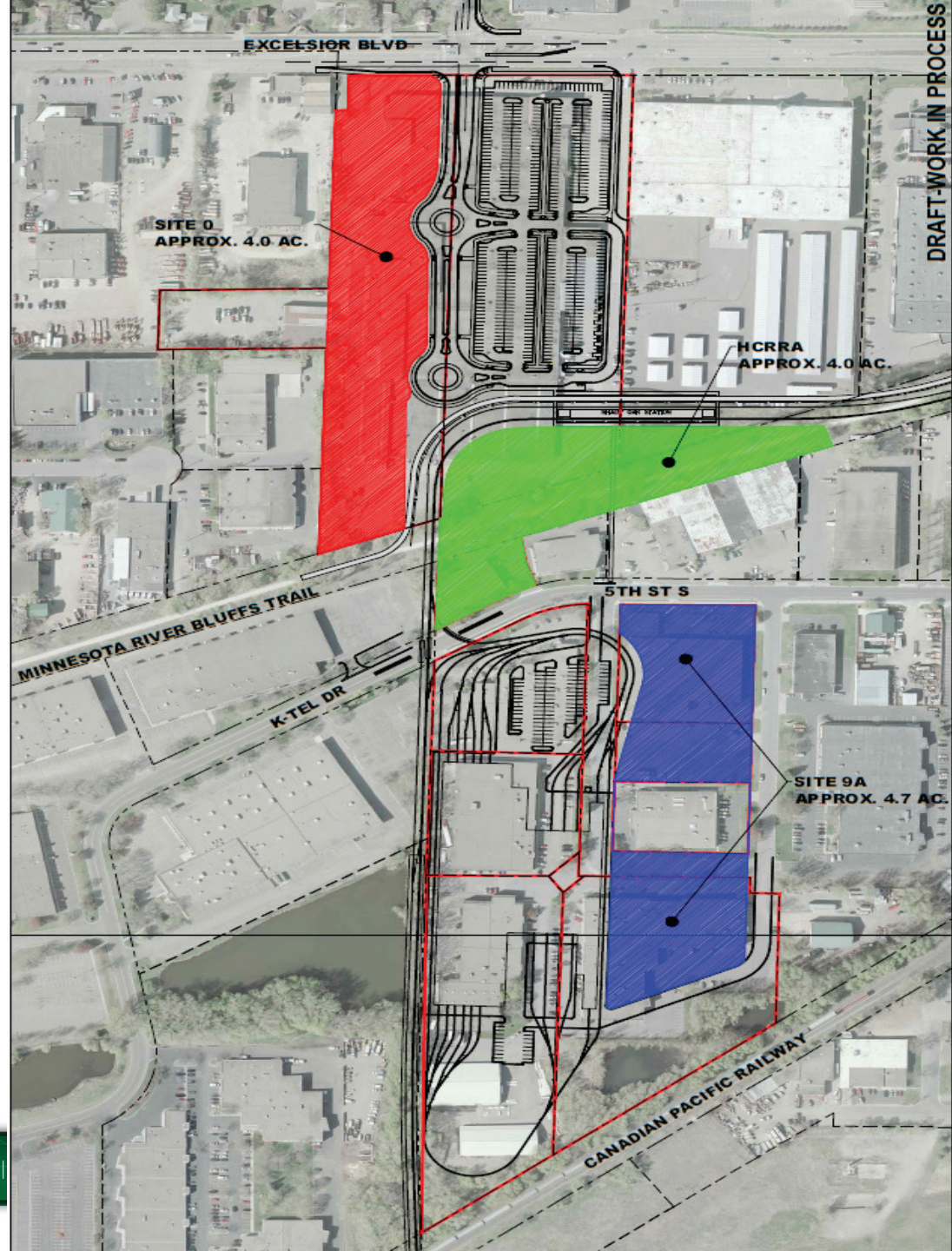
- Identify funding or approach for the park-and-ride facility that would best facilitate future development
- Prioritize structured parking as contingency funds are available
- Identify non-project funds for redevelopment of sites within proximity of OMF

# TI #23 OMF Site Location: Hopkins



DRAFT-WORK IN PROCESS

# TI #23 OMF Site Location: Hopkins

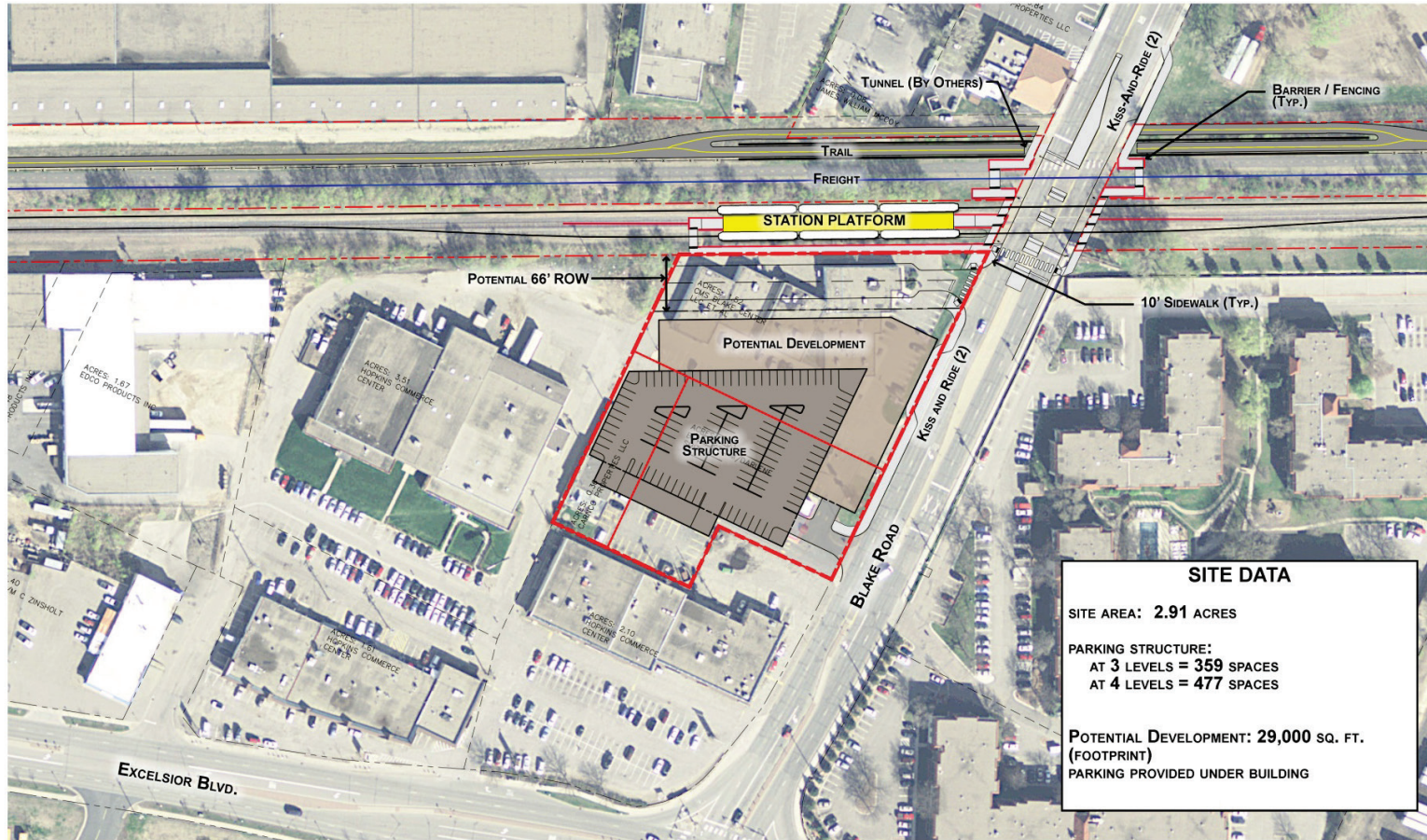


# Hopkins: Downtown Hopkins Station

- Provide additional amenities
  - Landscape and hardscape elements
  - Enhanced bike facilities
- Prioritize additional civic plaza elements as contingency funds are available
- Identify non-project funding to help implement the ARTery project along 8th Ave from the station platform to Mainstreet

# Hopkins: Blake Station

- Maintain current design for park-and-ride on SW corner





# Project Budget Target

# Budget Tool: LRT Base Project

PROJECT COMPONENTS	COST
LRT Base Project	\$1355 - \$1390 M

# Budget Tool: Freight Rail

FREIGHT RAIL OPTIONS		COST
Freight Rail Common Costs	<input type="checkbox"/>	\$85 - \$90 M
Brunswick Central Relocation <i>-OR-</i> Kenilworth Shallow LRT Tunnel Options	<input type="checkbox"/>	\$150 - \$200 M
<b>FREIGHT RAIL SUBTOTAL</b>		<b>\$235 - \$290 M</b>

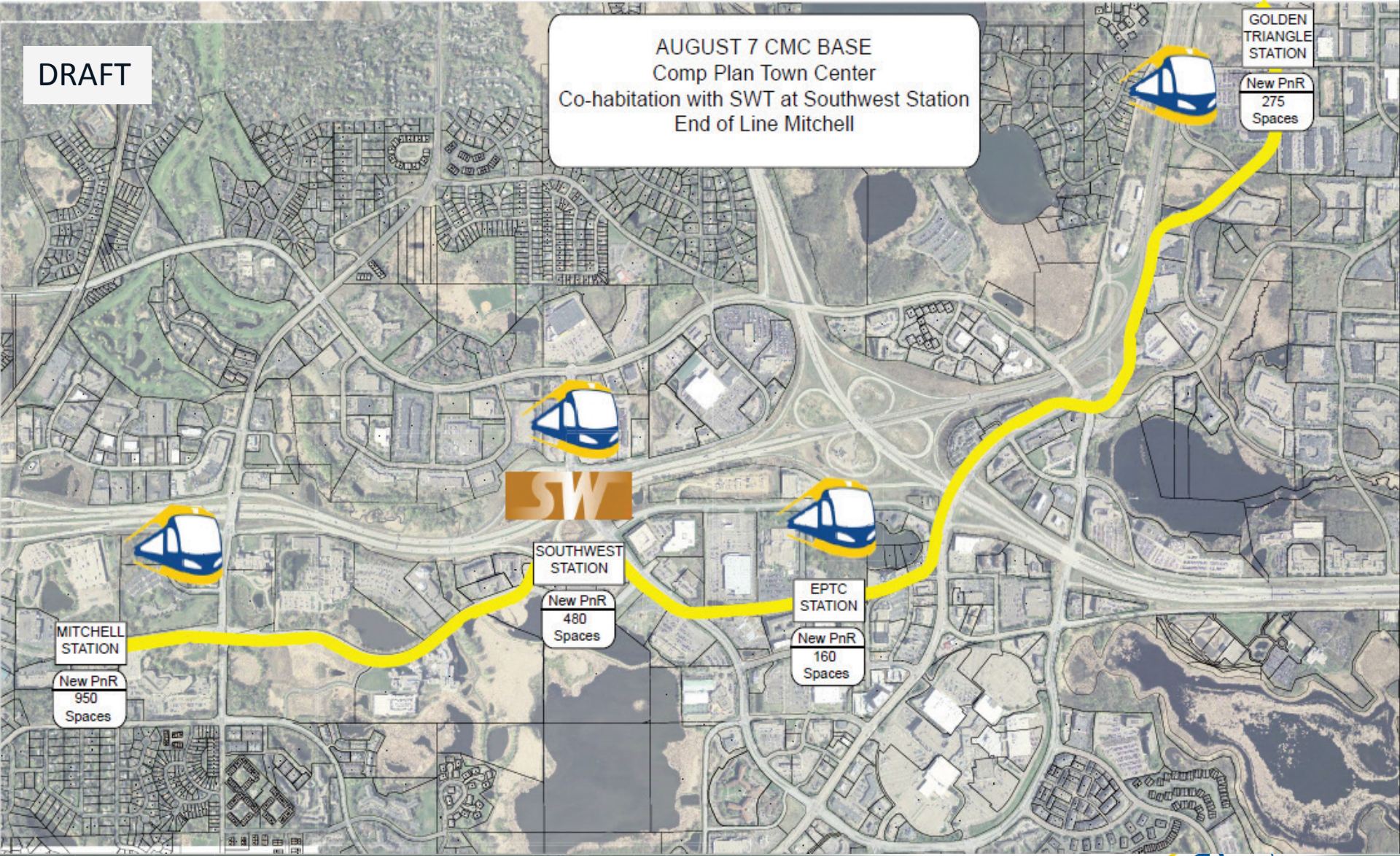
# Budget Tool: Potential Scope Reductions

POTENTIAL SCOPE REDUCTIONS		SAVINGS
1. End of line at City Center; Cohabitate at Southwest Station <b>-OR-</b>		(\$5-\$10)
2. End of line near Mitchell Rd. & Technology Dr.; No LRT at Southwest Station <b>-OR-</b>		(\$30-\$40)
3. End of line at Southwest Station; Relocate SouthWest Transit <b>-OR-</b>		(\$85-\$90)
4. End of line near Mitchell Road & Technology Dr.; Cohabitate but no LRT park-and-ride at Southwest Station		(\$10-\$15)
Use Oxford properties for Louisiana Station park-and-ride in place of purchasing an easement on the Golden Auto parking lot site (Louisiana Station base design only; CP ROW swap only)	■	(\$6-\$7)
Eliminate CP ROW swap & southerly connection (co-location only with bridge and station adjustments)	■	(\$55-\$60)
Eliminate northern segment of shallow LRT tunnel (co-location only)	■	(\$55-\$60)

# Budget Tool: End of Line and Stations

DRAFT

AUGUST 7 CMC BASE  
Comp Plan Town Center  
Co-habitation with SWT at Southwest Station  
End of Line Mitchell



# Budget Tool: End of Line and Stations

DRAFT

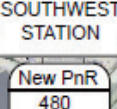
ADJUSTMENT #1  
Comp Plan Town Center  
Co-habitation with SWT at Southwest Station  
End of Line at City Center




EPCC STATION  
New PnR  
900  
Spaces



SW



SOUTHWEST STATION  
New PnR  
480  
Spaces



EPTC STATION  
New PnR  
160  
Spaces

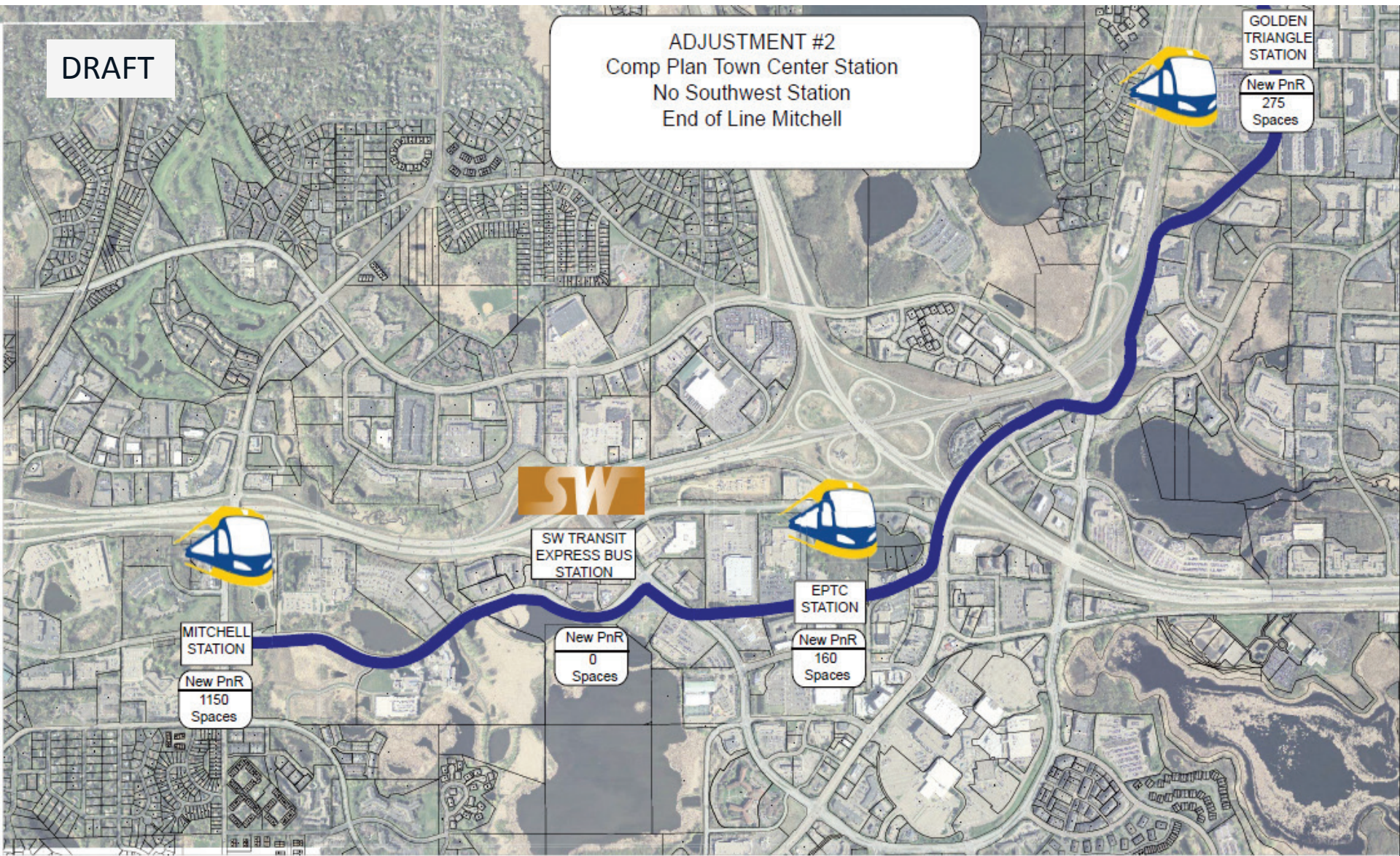


GOLDEN TRIANGLE STATION  
New PnR  
275  
Spaces

# Budget Tool: End of Line and Stations

DRAFT

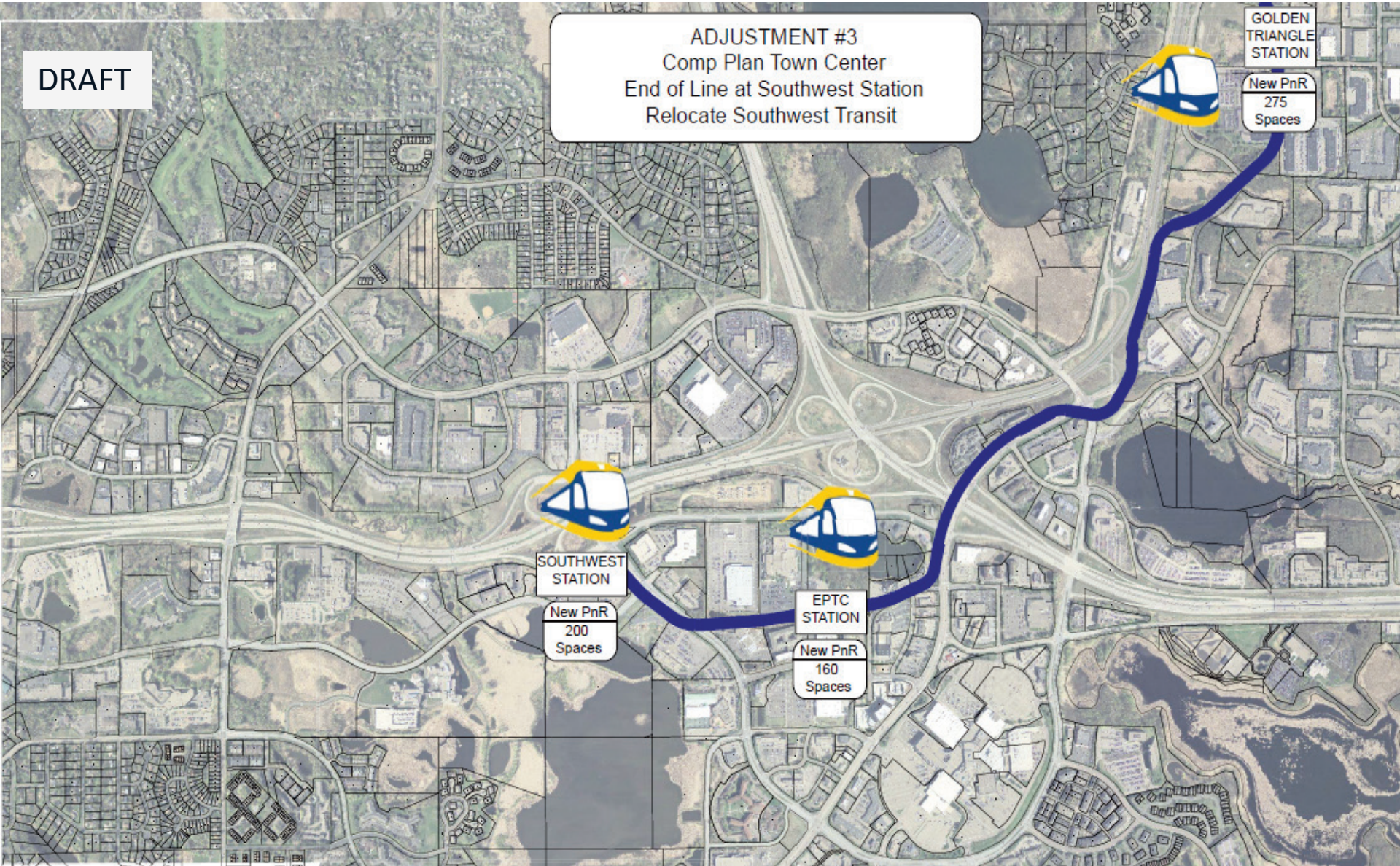
ADJUSTMENT #2  
Comp Plan Town Center Station  
No Southwest Station  
End of Line Mitchell



# Budget Tool: End of Line and Stations

DRAFT

ADJUSTMENT #3  
Comp Plan Town Center  
End of Line at Southwest Station  
Relocate Southwest Transit

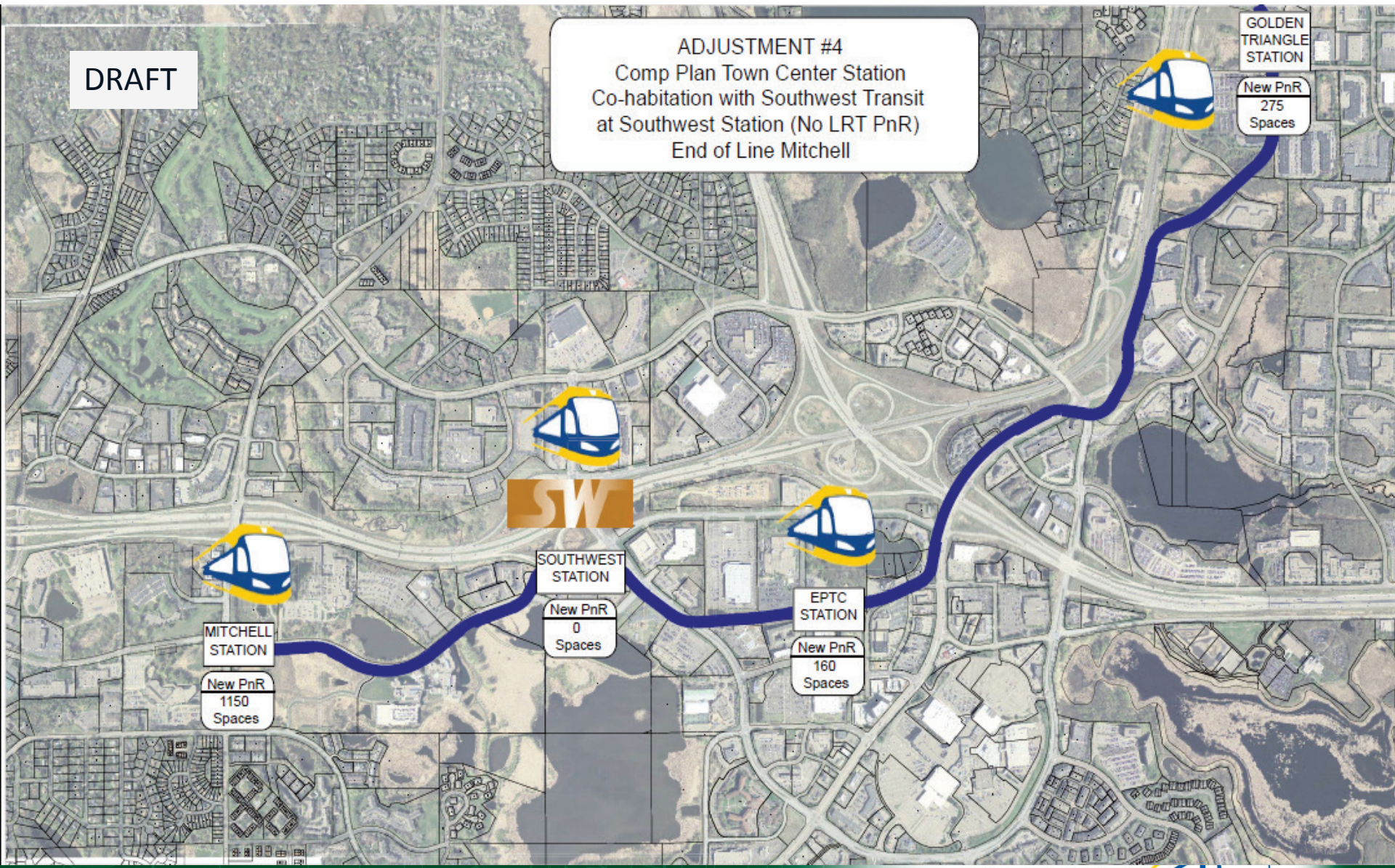




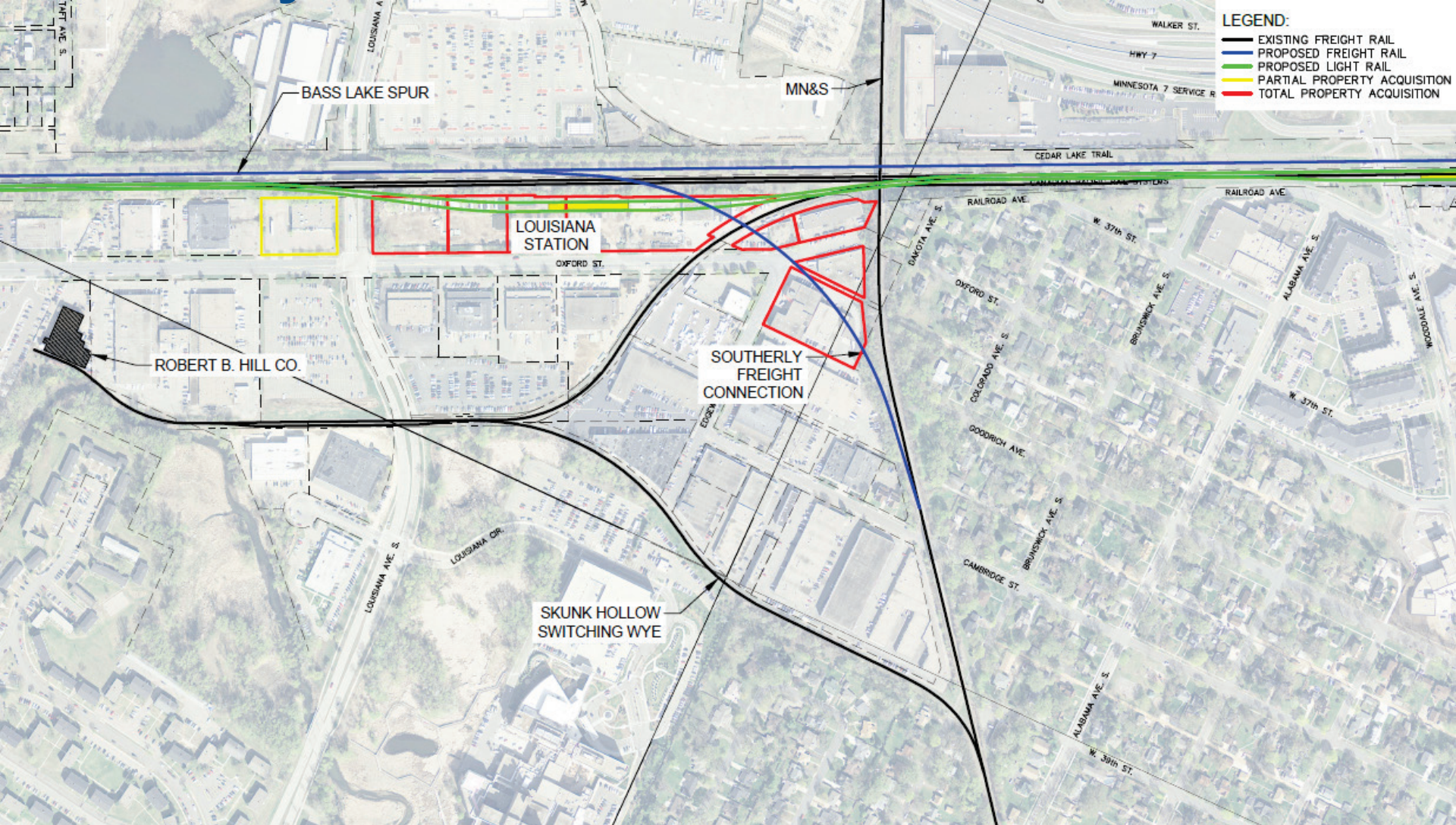
# Budget Tool: End of Line and Stations

DRAFT

ADJUSTMENT #4  
Comp Plan Town Center Station  
Co-habitation with Southwest Transit  
at Southwest Station (No LRT PnR)  
End of Line Mitchell



# Freight Rail Common Scope Elements: Southerly Connection



# Budget Tool: Locally Preferred Betterments

LOCALLY PREFERRED BETTERMENTS			COST
Eden Prairie TC Station	Extend Main St. north to Technology Dr.	<input type="checkbox"/>	\$2.5 - \$3
Minnetonka/Hopkins Bridge	Add ped/bike trail along bridge	<input type="checkbox"/>	\$12 - \$13
Shady Oak Station	Extend 17th St. from park-and-ride to K-Tel Drive	<input type="checkbox"/>	\$9 - \$10
	Change from 500 surface spaces to 250 surface/250 structured	<input type="checkbox"/>	\$3 - \$3.5
DT Hopkins Station	Civic plaza at station	<input type="checkbox"/>	\$4.5 - \$5
	Pedestrian enhancements at 8th Ave. & Excelsior Blvd.	<input type="checkbox"/>	\$0.5 - \$1
	Pedestrian crossing improvements at 5th Ave. & Excelsior Blvd. intersection	<input type="checkbox"/>	\$2 - \$2.5
Excelsior Crossing	Trail bridge over Excelsior Blvd.	<input type="checkbox"/>	\$5.5 - \$6.5
Blake Station	Joint development opportunity on NW corner of Blake Rd. & Excelsior Blvd.; site and access improvements	<input type="checkbox"/>	\$13.5 - \$14.5
	Trail underpass at Blake Rd.	<input type="checkbox"/>	\$3 - \$3.5
Louisiana Station	Platform adjacent to Methodist Hospital; Remove entire switching wye; park-and-ride east of Louisiana and south of freight rail corridor on Oxford properties	<input type="checkbox"/>	\$18 - \$23
Wooddale Station	Trail underpass at Wooddale	<input type="checkbox"/>	\$3 - \$3.5
Beltline Station	Grade-separate Beltline roadway under LRT/Freight/Trail <b>-OR-</b>	<input type="checkbox"/>	\$18 - \$23
	Trail overpass at Beltline Blvd.	<input type="checkbox"/>	\$3.5 - \$4
West Lake Station	Realign Chowen and Abbott on private property	<input type="checkbox"/>	\$2 - \$2.5

# More Information

Online:

[www.SWLRT.org](http://www.SWLRT.org)

Email:

[SWLRT@metrotransit.org](mailto:SWLRT@metrotransit.org)

Twitter:

[www.twitter.com/southwestlrt](http://www.twitter.com/southwestlrt)



# Total Project Cost: \$1,590 - \$1,680 M



PROJECT COMPONENTS		COST	LOCALLY PREFERRED BETTERMENTS		COST
LRT Base Project	<input checked="" type="checkbox"/>	\$1355 - \$1390 M	Eden Prairie TC Station	Extend Main St. north to Technology Dr.	\$2.5 - \$3
<b>FREIGHT RAIL OPTIONS</b>			<b>COST</b>		
Freight Rail Common Costs	<input checked="" type="checkbox"/>	\$85 - \$90 M	Minnetonka/Hopkins Bridge	Add ped/bike trail along bridge	<input type="checkbox"/> \$12 - \$13
Brunswick Central Relocation <b>OR</b> Kenilworth Shallow LRT Tunnel Options	<input checked="" type="checkbox"/>	\$150 - \$200 M	Shady Oak Station	Extend 17th St. from park-and-ride to K-Tel Drive	<input type="checkbox"/> \$9 - \$10
<b>FREIGHT RAIL SUBTOTAL</b>	<input checked="" type="checkbox"/>	<b>\$235 - \$290 M</b>	DT Hopkins Station	Change from 500 surface spaces to 250 surface/250 structured	<input type="checkbox"/> \$3 - \$3.5
<b>POTENTIAL SCOPE REDUCTIONS</b>			<b>SAVINGS</b>		
1. End of line at City Center; Cohabitate at Southwest Station <b>OR</b>	<input type="checkbox"/>	(\$5-\$10)	DT Hopkins Station	Civic plaza at station	<input type="checkbox"/> \$4.5 - \$5
2. End of line near Mitchell Rd. & Technology Dr.; No LRT at Southwest Station <b>OR</b>	<input type="checkbox"/>	(\$30-\$40)	DT Hopkins Station	Pedestrian enhancements at 8th Ave. & Excelsior Blvd.	<input type="checkbox"/> \$0.5 - \$1
3. End of line at Southwest Station; Relocate SouthWest Transit <b>OR</b>	<input type="checkbox"/>	(\$85-\$90)	DT Hopkins Station	Pedestrian crossing improvements at 5th Ave. & Excelsior Blvd. intersection	<input type="checkbox"/> \$2 - \$2.5
4. End of line near Mitchell Road & Technology Dr.; Cohabitate but no LRT park-and-ride at Southwest Station	<input type="checkbox"/>	(\$10-\$15)	Excelsior Crossing	Trail bridge over Excelsior Blvd.	<input type="checkbox"/> \$5.5 - \$6.5
Use Oxford properties for Louisiana Station park-and-ride in place of purchasing an easement on the Golden Auto parking lot site (Louisiana Station base design only; CP ROW swap only)	<input type="checkbox"/>	(\$6-\$7)	Blake Station	Joint development opportunity on NW corner of Blake Rd. & Excelsior Blvd.; site and access improvements	<input type="checkbox"/> \$13.5 - \$14.5
Eliminate CP ROW swap & southerly connection (co-location only with bridge and station adjustments)	<input type="checkbox"/>	(\$55-\$60)	Blake Station	Trail underpass at Blake Rd.	<input type="checkbox"/> \$3 - \$3.5
Eliminate northern segment of shallow LRT tunnel (co-location only)	<input type="checkbox"/>	(\$55-\$60)	Louisiana Station	Platform adjacent to Methodist Hospital; Remove entire switching wye; park-and-ride east of Louisiana and south of freight rail corridor on Oxford properties	<input type="checkbox"/> \$18 - \$23
<b>OTHER</b>			Wooddale Station	Trail underpass at Wooddale	<input type="checkbox"/> \$3 - \$3.5
	<input type="checkbox"/>		Beltline Station	Grade-separate Beltline roadway under LRT/Freight/Trail <b>OR</b>	<input type="checkbox"/> \$18 - \$23
	<input type="checkbox"/>		Beltline Station	Trail overpass at Beltline Blvd.	<input type="checkbox"/> \$3.5 - \$4
	<input type="checkbox"/>		West Lake Station	Realign Chowen and Abbott on private property	<input type="checkbox"/> \$2 - \$2.5