



Construction Update: October 25, 2019

Web: swlrt.org

Twitter: [@SouthwestLRT](https://twitter.com/SouthwestLRT)

Construction Hotline: 612-373-3933

Lights on for Safety

With daylight hours getting shorter, work may start before the sun rises and continue after dusk. For safety reasons, in the coming weeks nearby residents and businesses will see more frequent use of lighting rigs and lights on equipment to illuminate the worksite. Crews working during darker hours are also required to wear additional reflective gear to make them more visible to passers-by, equipment operators and other construction staff. Please be aware of work areas and use your vehicle's lights or use a flashlight when walking near construction sites.

Weekly Construction Photo: I-494 Bridge Pier in Eden Prairie



Crews work in the I-494 median to build the center pier for the LRT bridge.

On-going Activities Update

SouthWest Station Area in Eden Prairie

The temporary passenger drop-off lanes at SouthWest Transit Station have been moved to the west end of the parking structure; bus service continues to operate as usual. Pile driving will continue into 2020 as crews focus on different elements of the station site and the LRT bridge. Retaining wall work for the LRT guideway is also continuing in the area. Crews are constructing a temporary passenger waiting area for bus riders that will be completed late November. Then crews will demolish the current SouthWest Transit Station passenger waiting area and former office building through January. Crews are working near the intersection of Technology Drive and Prairie Center Drive to build bridge piers. The sidewalk is closed on the northwest corner of Technology Drive and Prairie Center Drive; please follow detour signage to the southwest sidewalk next to Purgatory Park. The west entrance to the shopping area is temporarily closed and will continue to be closed through late November.

Eden Road Area in Eden Prairie

Crews continue to perform grading and retaining wall work. Retaining walls have taken shape in the area. Utility companies are also working in the area and near Flying Cloud Drive towards the east.

LRT Bridge at I-494/Flying Cloud Drive in Eden Prairie

Pier construction in the center median of I-494 for the new LRT bridge is nearly complete; traffic control barriers continue to be in place. The I-494 eastbound ramp to TH 212 remains closed. **See detour map below.** Please remember to observe the posted speed limit to ensure your safety and other motorists as well as our crews.

Valley View Road/Flying Cloud Drive in Eden Prairie

A lane restriction has been added in the area of Flying Cloud Drive and TH 212, where work has begun on the ramp from Valley View Road to TH 212. Traffic is being diverted onto the HOV lane. Crews are constructing piers for the new LRT bridge and earthwork in the area will continue for as long as weather allows.

Golden Triangle Station in Eden Prairie

Piling activities continue in the Golden Triangle Station area during the daytime. Night piling work is anticipated to resume later this Fall. Night work could continue intermittently as the segment between the Golden Triangle Station north of West 70th Street to a bridge over Shady Oak Road and Hwy 212 is completed. As work progresses, the Southwest Project Office will continue to look for opportunities to shift activities to the daytime. Crews are also working on retaining walls and sanitary sewer in the area.

TH 62 in Minnetonka

Last week crews shifted eastbound traffic to a single lane on new temporary pavement. Crews are working to complete construction activities in the median. In mid-November both eastbound and westbound traffic will shift to the south side of the highway, two lanes in each direction. Once traffic is shifted crews will begin the construction of the cut and cover LRT tunnel under the westbound lanes of TH 62. Expect traffic delays through the duration of these activities.

Smetana Road in Minnetonka and Hopkins

Smetana Road from Feltl Court to Feltl Road remains closed until early November (**see detour map below**). Crews are working on a storm sewer and will begin constructing a bypass road. Following the current closure, Smetana Road from Feltl Road to Nolan Drive will be closed for up to a year. Signs will be posted seven days before each closure. Excavation for the Opus Station, south of this area, is ongoing.

Minnesota River Bluffs Regional Trail in Hopkins

The Minnesota River Bluffs Regional Trail in Hopkins is closed between Shady Oak Road and 5th Avenue South. **See detour map below.**

- The section between 11th Avenue South and Shady Oak Road is closed due to storm sewer construction activities. This portion of the trail is closed until summer 2020.
- The section between 8th Avenue South and 5th Avenue South is closed until Fall 2021.

Excelsior Boulevard Area in Hopkins

Excelsior Boulevard at the freight railroad crossing will remain closed to all vehicle traffic until mid-November. Crews are working on underground utilities, freight rail tracks and the LRT bridge structure. Expect traffic delays in this area. **See detour map below.**

South Cedar Lake LRT Trail

The South Cedar Lake Trail from just east of the North Cedar Lake Trail connection in Hopkins to France Avenue in St. Louis Park is closed until Fall 2021 (**see detour maps below**). The South Cedar Lake Trail will remain open between France Avenue in St. Louis Park and Kenilworth Trail/Midtown Greenway intersection in Minneapolis. The Midtown Greenway will remain open. Currently, cross streets remain open to automobiles, bikes and pedestrians, with separate closure of roadways upcoming at various dates.

Blake Road in Hopkins

Crews are constructing a cut and cover tunnel under Blake Road for the regional trail. Southbound traffic continues to be diverted to the east side of the road, with one lane in each direction; this will last for approximately 6 months. Once tunnel work is complete on the west side of the road, the work will shift to the east side of the road and traffic will be diverted to the west side of the road.

Minnehaha Creek in St. Louis Park

Crews demolished the regional trail bridge that spans Minnehaha Creek in St. Louis Park. Sheet piling and excavation for the new freight and trail bridge abutments are underway in the area. Flaggers are monitoring recreational water use during times that construction activities make it unsafe to travel through the creek. Individuals using the waterway may encounter intermittent closures lasting approximately 20 minutes during construction activity.

Louisiana Avenue in St. Louis Park

Vehicle traffic is reduced to one lane in each direction as crews work on new freight and pedestrian bridge abutments; expect piling activity in the area. Another full closure of Louisiana Avenue is anticipated in late November to set bridge beams. Signs will be posted seven days prior to the closure.

TH 100 in St. Louis Park

The project will be re-positioning the existing freight rail bridge and will build a new LRT bridge over TH 100. Crews will continue to work on the new LRT bridge abutments.

Beltline Boulevard in St. Louis Park

Work on the new South Cedar Lake Trail Bridge continues. Crews are working on bridge abutments and performing pier work. Crews are also working on retaining walls in the area, which includes pile driving.

Kenilworth Trail Closure

The Kenilworth Trail is closed in Minneapolis at the intersection with the Midtown Greenway to just south of West 21st Street until Summer 2022. Access for automobiles, bikes and pedestrians remains open at Cedar Lake Parkway and at W 21st Street. **(See detour map below).**

Chowen Avenue to Lake Street in Minneapolis

Storm sewer and watermain work will be the focus of construction activities in this area for the coming weeks. Some tree removal is ongoing. Next week crews will begin to construct a temporary trail as well as the new permanent trail segment. While the trail currently remains open during these activities, flaggers will be on the trail to periodically direct bike and pedestrian movements; expect occasional short-term delays.

Kenilworth Area Construction in Minneapolis

Sheet piling for the Kenilworth LRT Tunnel is anticipated to begin in early November. The contractor plans to start tunnel sheet piling work near Park Siding Park and will move north towards Cedar Lake Parkway. Sheet piling installation is expected to last until summer 2020 with two press-in-pilers. Tunnel excavation is anticipated to begin Spring 2020. For more information about tunnel construction, see the [tunnel FAQ](#) information under the construction tab of our webpage: swlrt.org. A short [video](#) of the press-in-piler construction technique is also available.

Concrete work for the retaining walls south and north of the channel continues.

Burnham Road in Minneapolis

The roadway remains closed to through traffic. Two-way traffic will continue to be allowed on Burnham Road Bridge during this closure. **See detour maps below.** Crews will work on the paving the roadway next week; paving is expected to take up to three weeks. Burnham Road will reopen when paving work is complete.

Cedar Lake (Kenilworth) Channel and Works Progress Administration (WPA) in Minneapolis

Pier construction and piling for the new freight bridge is ongoing. Crews are also working on watermain installation. Individuals using the waterway between Lake of the Isles and Cedar Lake may encounter intermittent closures lasting approximately 20 minutes during construction activity. A full closure of the Cedar Lake Channel is expected later this Fall; a 14-day advanced notification will be provided prior to a full closure.

21st Street in Minneapolis

The contractor has completed sheet piling work for the retaining wall immediately north of 21st Street using the press-in-piler. Concrete work on the retaining wall is ongoing. Other earthwork activities in this area will begin later this Fall.

Bryn Mawr Bluffs area in Minneapolis

Work is resuming under I-394 on bridge piers. Permanent trail work will begin in November.

North Cedar Lake Trail in Minneapolis

The North Cedar Lake trail in Minneapolis from Linden Yards located west of Van White Boulevard to east of Royalston Avenue is closed for approximately two years until mid-2021 (**see detour maps below**).

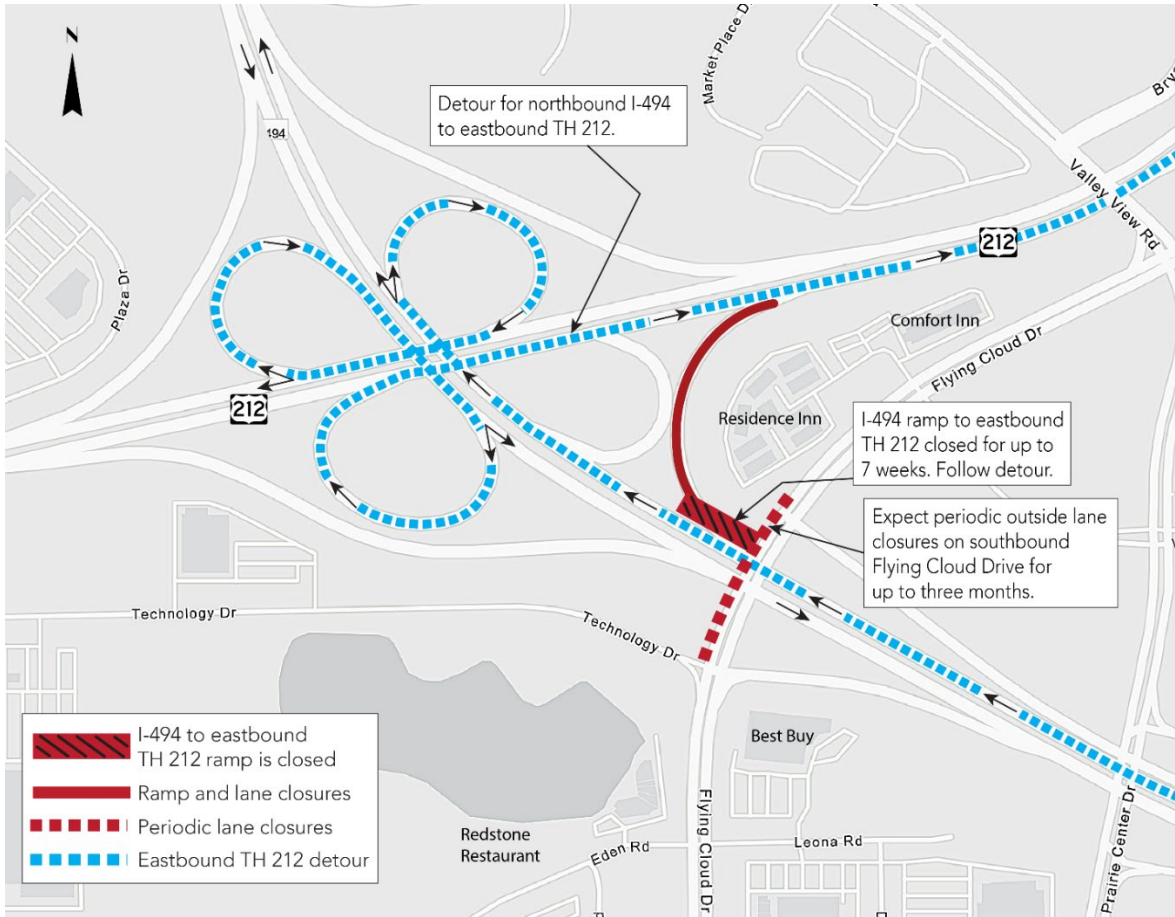
Glenwood Avenue in Minneapolis

The closure of Glenwood Avenue between Lyndale Avenue North and 11th Street North began on July 15, 2019 and is anticipated to last approximately two years. Local access to businesses will be maintained. Generally, vehicle detours will use Lyndale Avenue, Olson Memorial Highway and 7th/10th Streets. The pedestrian detour continues to utilize Border Avenue, Holden Street and Royalston Avenue sidewalks. **See detour map below.** Utility work, retaining wall installation and freight track preparation continues. Crews will be working Saturday, October 26. Work will not include any high-impact activities, such as pile driving and sheeting installation.

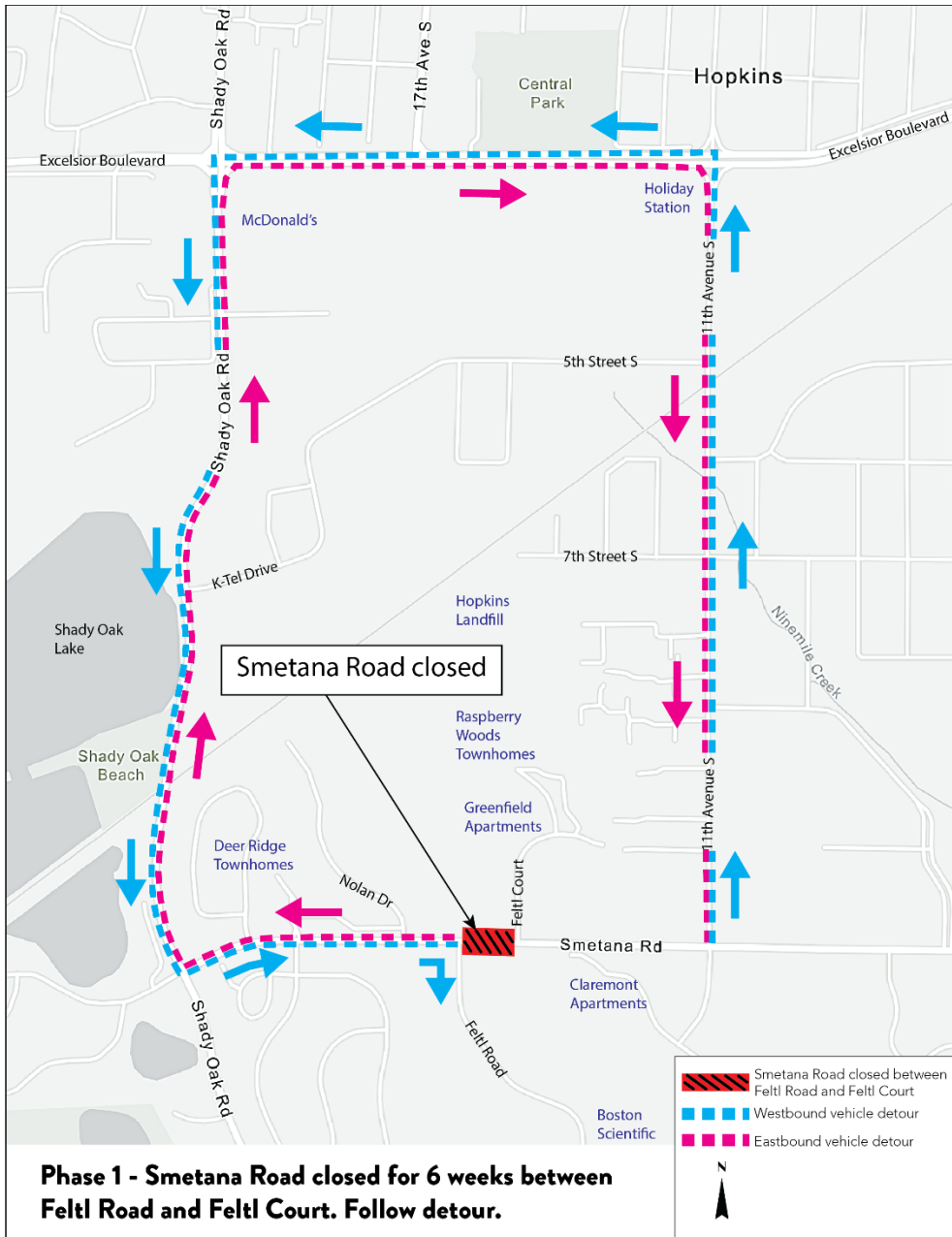
Royalston Avenue in Minneapolis

Expect utility work on Royalston Avenue beginning the week of October 28. Work is anticipated to last until mid-November. Crews will work on the west side of the road; southbound traffic will be diverted to the east side of the road.

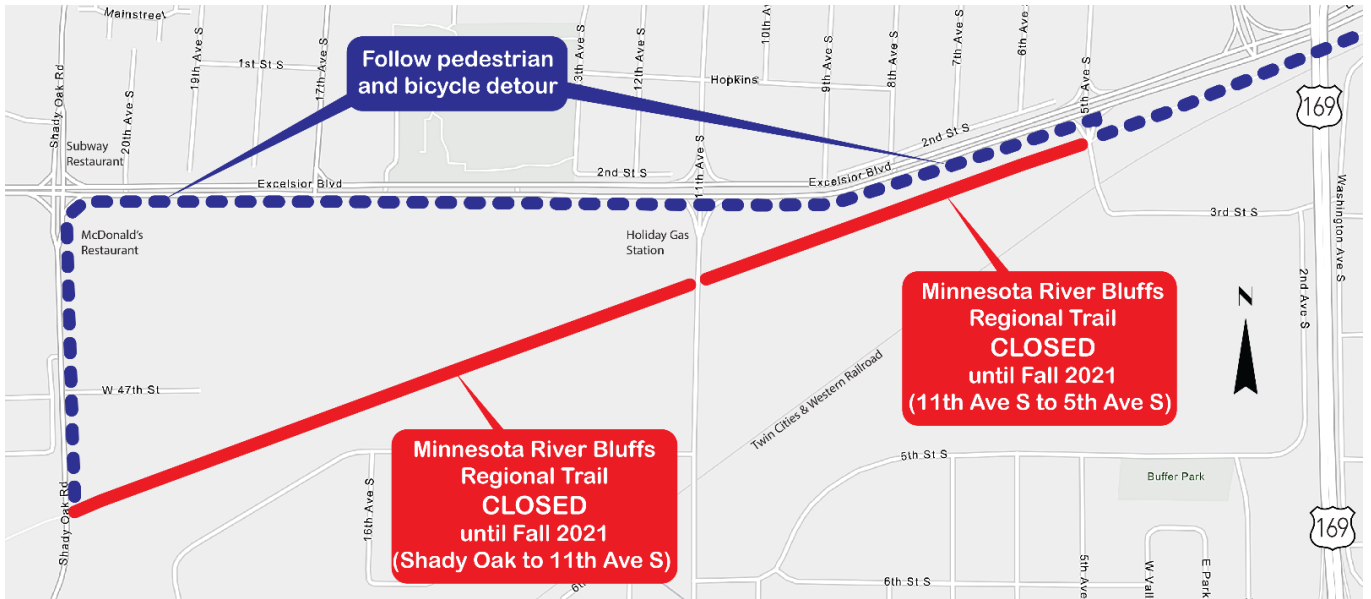
Northbound I-494 to Eastbound TH 212 Detour



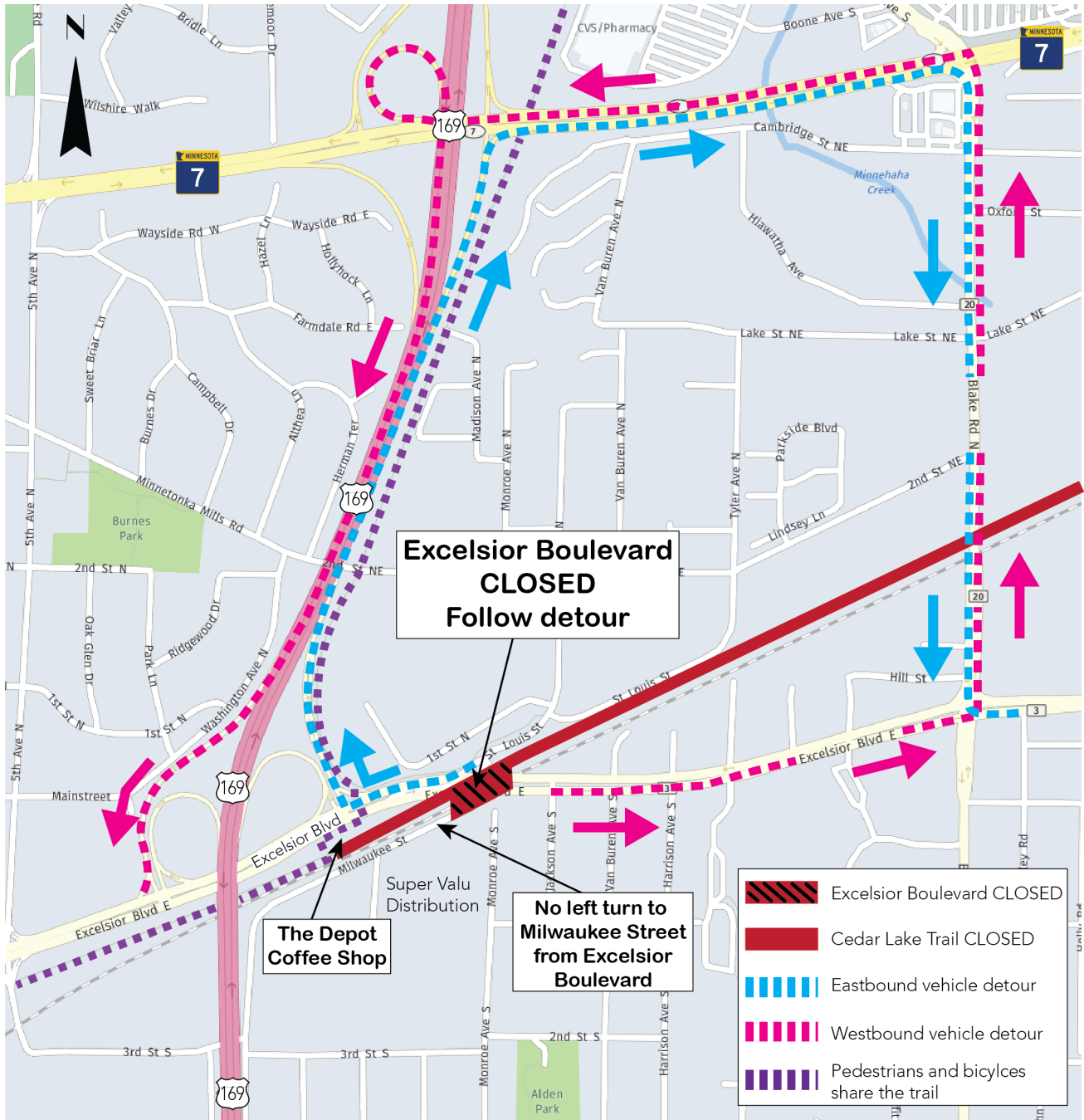
Smetana Road in Minnetonka and Hopkins Detour



Minnesota River Bluff Trail from Shady Oak Road to 5th Avenue Detour



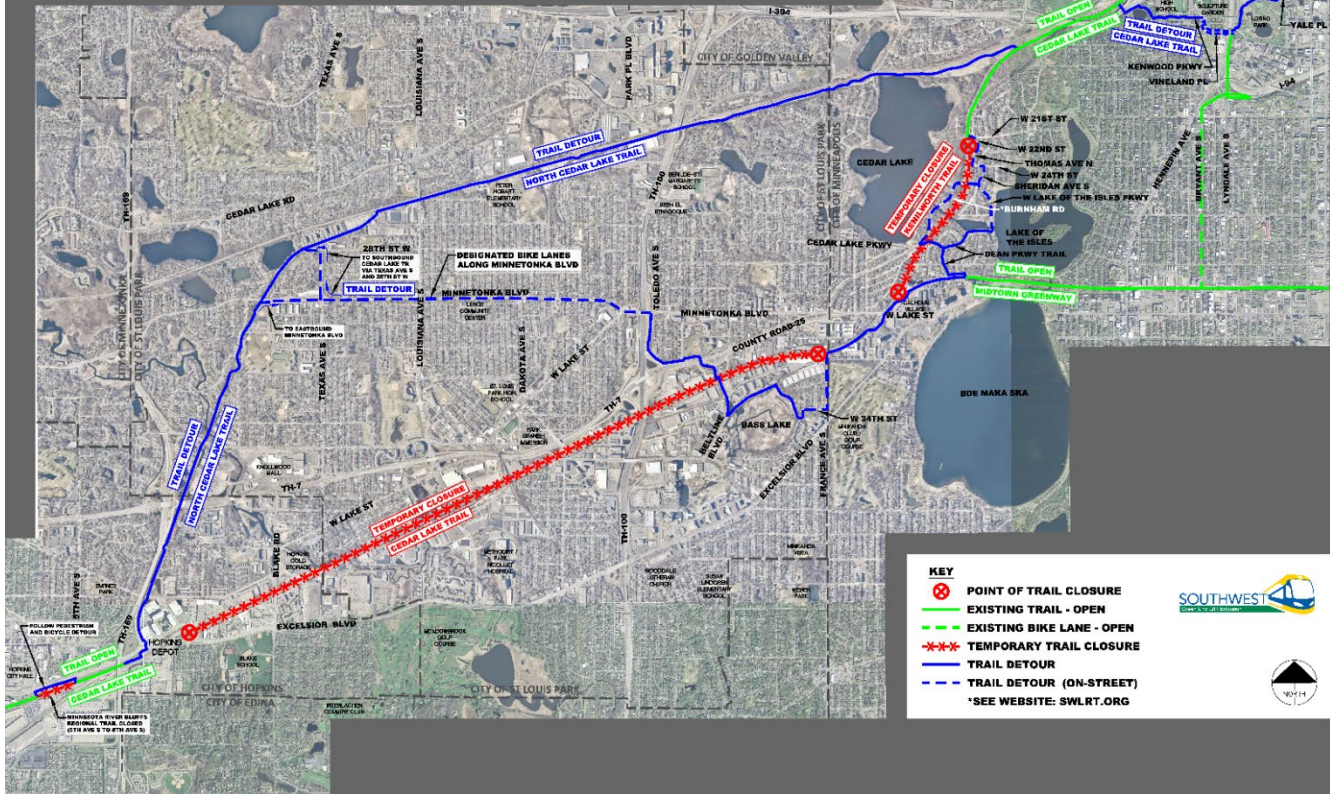
Excelsior Boulevard Detour in Hopkins



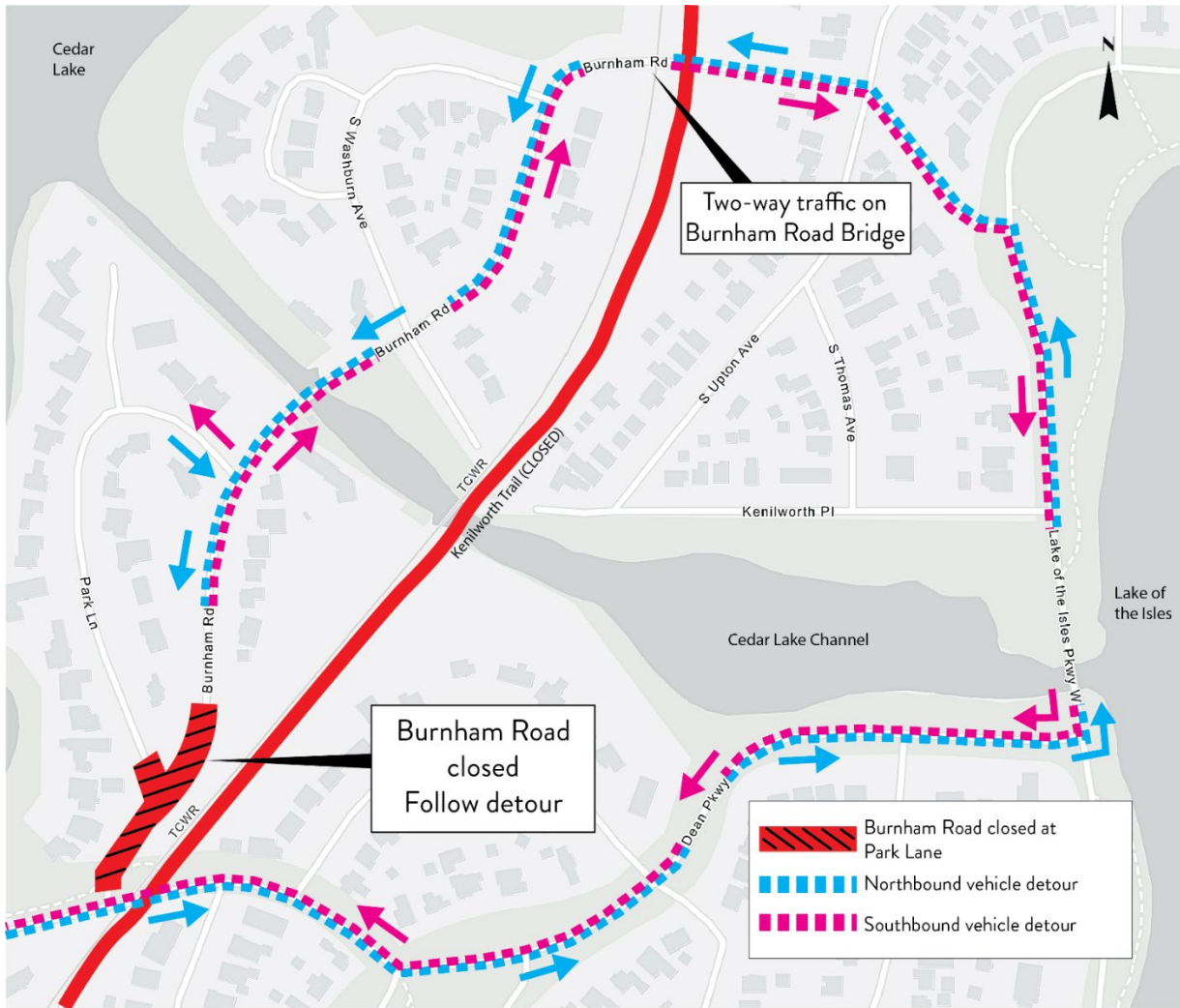
Cedar Lake and Kenilworth Trail Detours

TRAIL DETOUR

MORE DETAILS: SWLRT.ORG



Burnham Road Closure at Cedar Lake Parkway in Minneapolis Detour



Glenwood Avenue in Minneapolis Detour

