



## **METRO BLUE LINE EXTENSION**

# Minnesota's Next Light Rail

The METRO Blue Line Extension Light Rail Transit project will connect Minneapolis, Robbinsdale, Crystal, Brooklyn Park, and surrounding communities to fast, frequent, all-day service across the METRO system by providing a one seat ride from Brooklyn Park to MSP Airport and Mall of America.

# Community Prosperity and Anti-Displacement

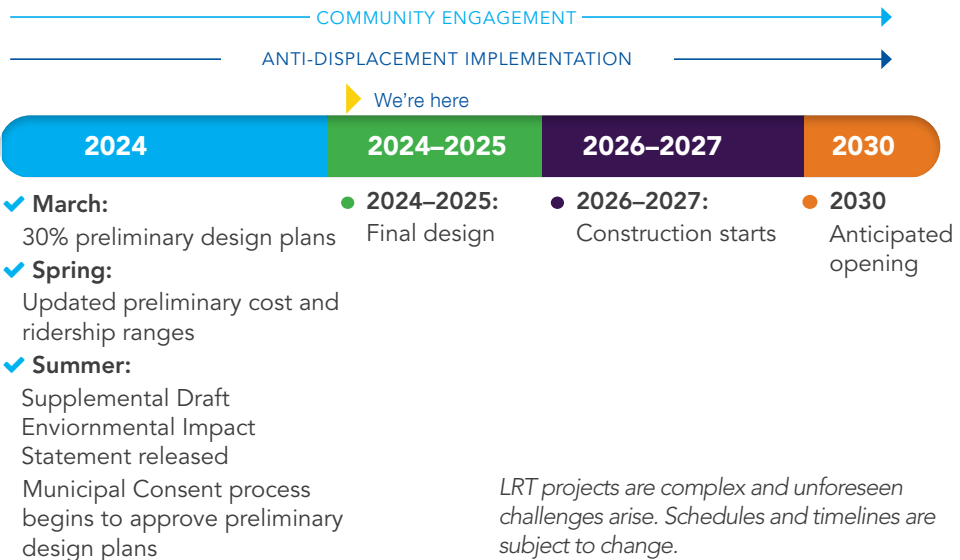
The Blue Line Extension is a generational investment that will contribute to prosperity for current corridor communities and future generations.

Partners are working together to maximize benefits of this light rail line by implementing strategies to prevent displacement and help communities thrive.

Blue Line Extension will serve some of our region's most diverse communities, better connecting people to our regional transit system, opening new opportunities and key destinations for employment, education, healthcare, culture, recreation, and so much more.

Light rail service in these communities will provide an affordable and reliable transportation option, greatly increasing mobility and access to opportunities and destinations in communities with high numbers of households who don't own a car and rely on transit to meet everyday needs.

## Project Schedule





## Community Destinations

The Blue Line Extension will be a single seat ride to downtown Minneapolis, MSP Airport, Mall of America and all the destinations in between, such as:

- 1 **Brooklyn Park**  
North Hennepin Community College
- 2 **Crystal**  
Bass Lake Road Business District
- 3 **Robbinsdale**  
Historic Downtown Robbinsdale
- 4 **Robbinsdale**  
North Memorial Hospital
- 5 **Minneapolis**  
West Broadway Business Corridor
- 6 **Minneapolis**  
North Loop
- 7 **Minneapolis**  
Downtown Minneapolis

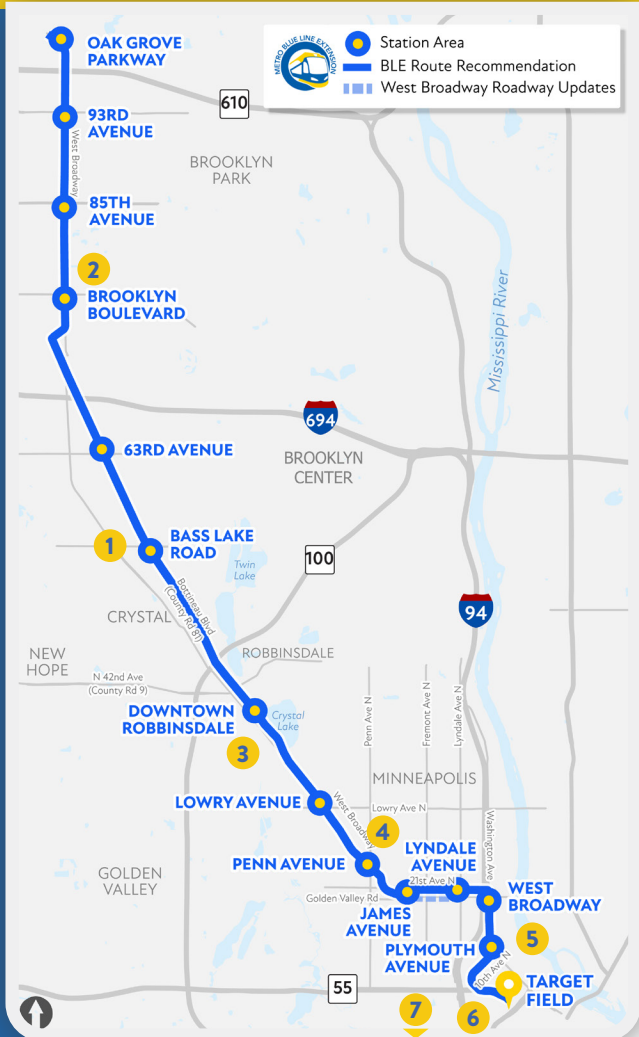


Figure 1: Proposed Route



# Share Your Feedback

We want to hear your thoughts on the project and what you want to see from the transit system.

Visit [BlueLineExt.org](https://www.metrotransit.org/blue-line-extension) to:

- View the latest project updates
- Provide comments
- Connect with us to discuss questions or ideas
- Invite project staff to your event or gathering

## Stay Connected!

For project questions or to invite us to an event, contact:

Brooklyn Park/Crystal: Joanna Ocasio-Maisonet – [Joanna.Ocasio-Maisonet@metrotransit.org](mailto:Joanna.Ocasio-Maisonet@metrotransit.org)

Robbinsdale: James Mockovciak – [James.Mockovciak@metrotransit.org](mailto:James.Mockovciak@metrotransit.org)

Minneapolis: Kaja Vang – [Kaja.Vang@metrotransit.org](mailto:Kaja.Vang@metrotransit.org)



Visit [BlueLineExt.org](https://www.metrotransit.org/blue-line-extension) for more information, to sign-up for the project newsletter, and view upcoming events

Join the conversation at: [YourBlueLine.org](https://www.yourblue-line.org)