

SOUTHWEST

Green Line LRT Extension



City of Eden Prairie Public Hearing on SWLRT Municipal Consent Plans

May 20, 2014



Agenda

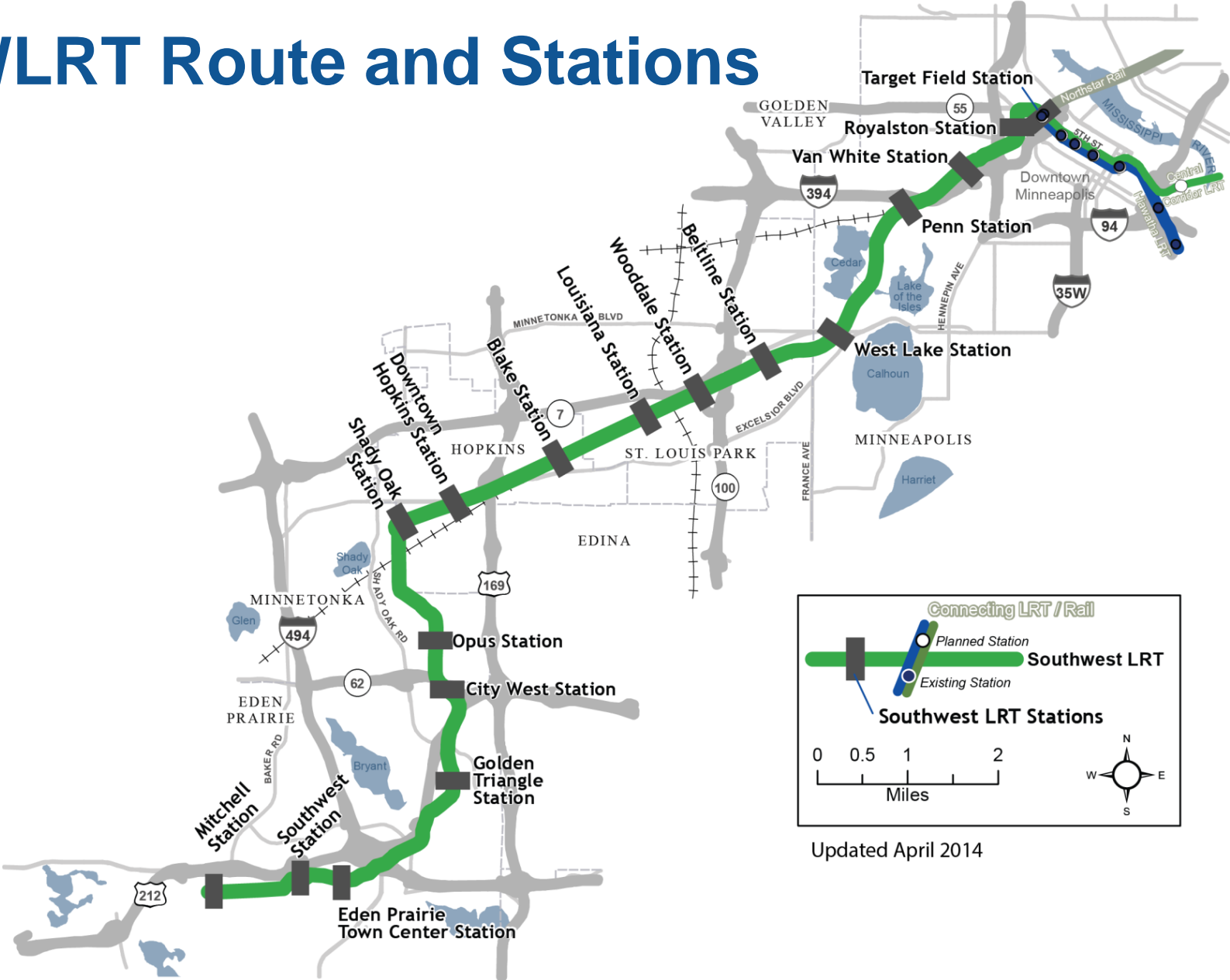
- 6:00 PM Open House
 - Opportunity for the public to ask questions, get answers
- 7:00 PM Public Hearing
 - Welcome and brief project overview
 - Opportunity for the public to comment on plans



Purpose of Today's Municipal Consent Public Hearing

- Provide stakeholders an opportunity to comment to their municipality on preliminary design plans
- Comments will be used to:
 - Decide whether or not to approve the plans
 - Inform municipality's comments to be forwarded to the Met Council

SWLRT Route and Stations



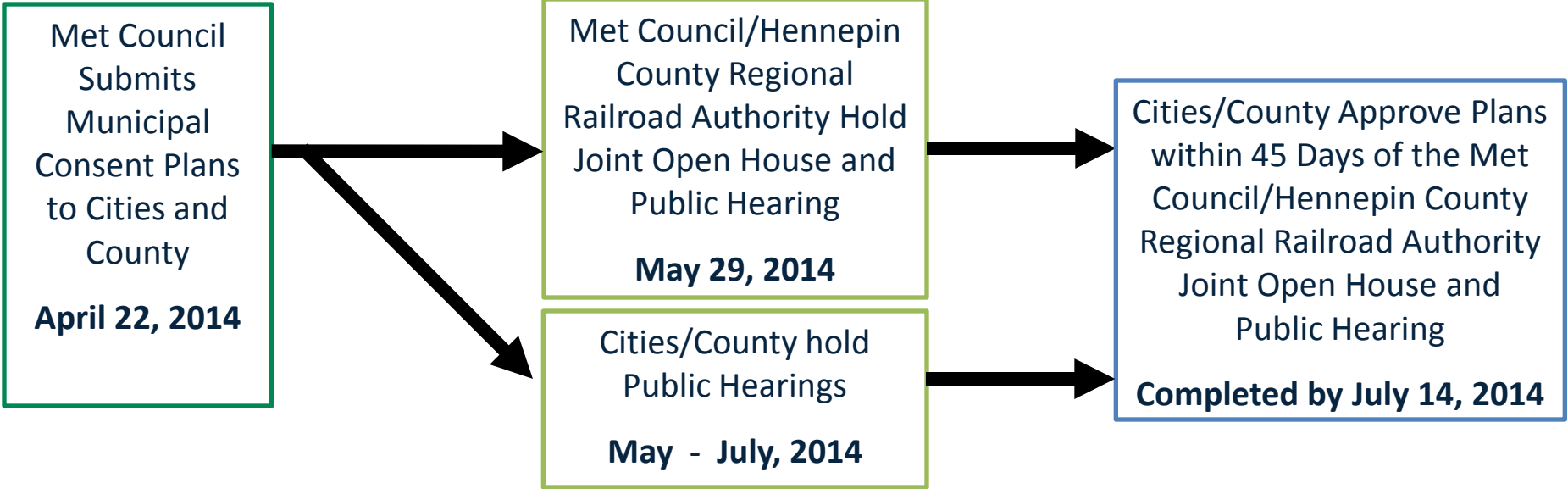
Met Council Approved Project Scope and Budget

- SWLRT Scope:
 - 16 stations
 - 15.8 miles of new LRT double track
 - LRT tunnels in Kenilworth Corridor with LRT bridge over channel
 - Operations and Maintenance Facility located in Hopkins
- SWLRT Budget: \$1.673B - \$1.683B

Municipal Consent Process

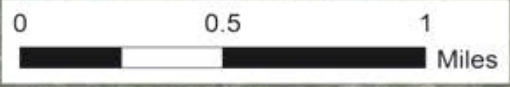
- Minnesota Statute 473.3994
- Local jurisdictional review and approval of physical design component of preliminary design plans

Municipal Consent Process

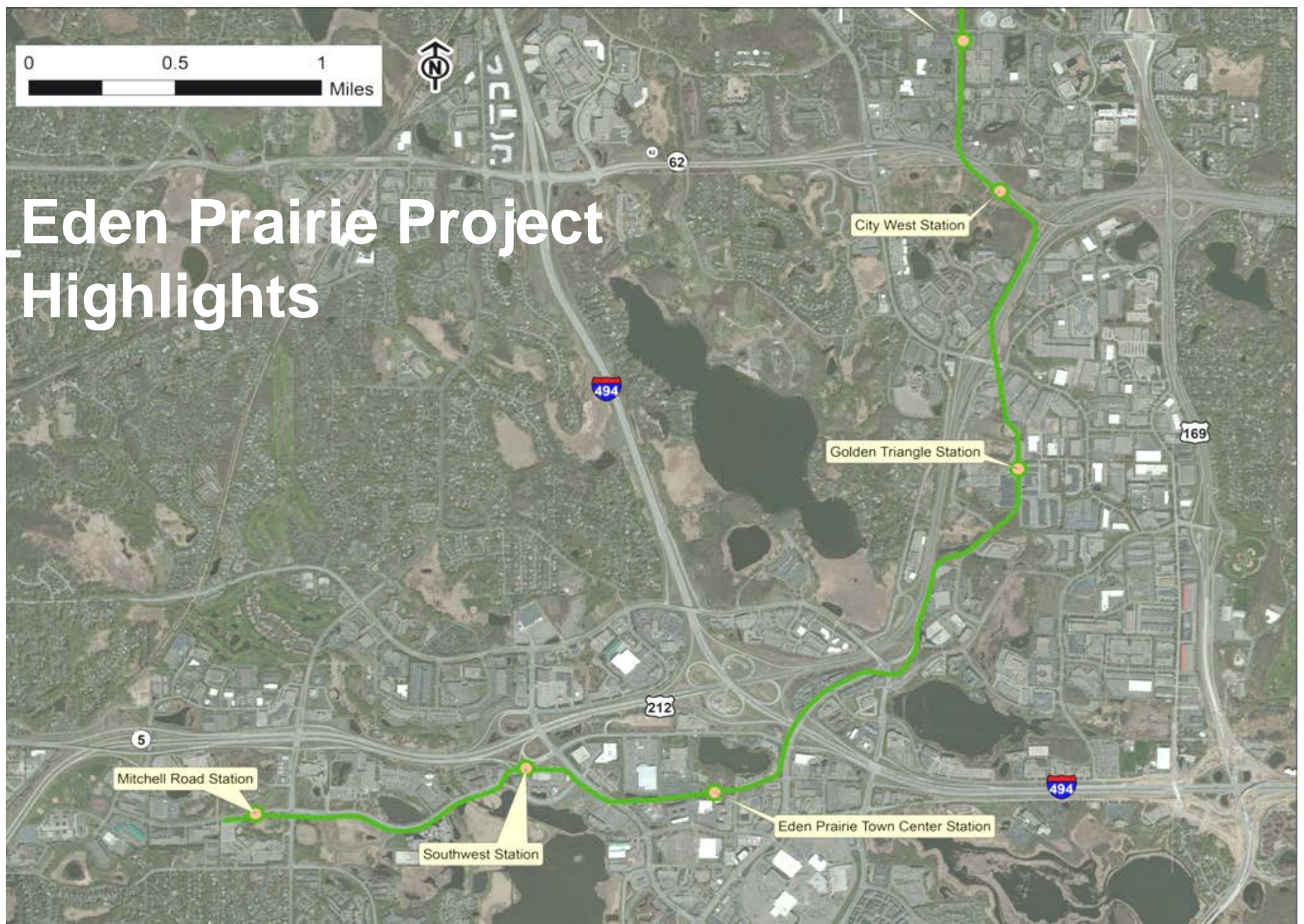


Physical Design Components

- LRT track location
- Station location and layout
- Roadway features
 - Turn lanes
 - Lane widths
 - Traffic signals
- Sidewalks
- Pedestrian crossings
- Operations and Maintenance Facility (OMF) location
- Freight track location
- System elements



Eden Prairie Project Highlights



Mitchell Road Station

Southwest Station

Eden Prairie Town Center Station

Golden Triangle Station

City West Station

Next Steps After Municipal Consent

- Station design and public art
- Streetscape design
- Utility relocation design
- Design advancement:
 - LRT track features
 - Roadway details
 - OMF features
 - Bridges and tunnels
 - System elements
 - Freight rail features

More Information

Online:

www.SWLRT.org

Email:

SWLRT@metrotransit.org

Twitter:

www.twitter.com/southwestlrt

