

SOUTHWEST

Green Line LRT Extension



Civil Construction Pre-Bid and DBE Meet and Greet

March 3, 2017



Today's Topics

- Welcome/Introductions
- Bid Requirements
- Review of DBE Participation
- Overview of Project Specifications
- DBE Meet and Greet



Bidding Requirements

Auburn Dees, IFB Administrator

Nothing said at this meeting today changes the written requirements of the IFB; any changes will be made by written addendum.

Any addenda will be posted on the QuestCDN site. Registered document holders will receive an automated email notification when an addendum is issued.

Bidders must acknowledge all addenda on the Bid Form.

Bid Requirements

- Questions due: 10 days prior to the Bid Due Date
 - <https://bit.ly/swlrt-civil> (e-Builder) for technical questions
 - auburn.dees@metc.state.mn.us for bidding and contract requirements
- Bids due: May 2, 2017 at 2:00 PM Local Time

Submitting Questions

Questions from Potential Bidders for SWLRT Civil Project

Potential Bidder Question (PBQ)

Start Process

* Name:	<input type="text"/>
* Email Address:	<input type="text"/>
* Company:	<input type="text"/>
* Question:	<input type="text"/>
* Drawing Reference:	<input type="text"/>
* Specification Reference:	<input type="text"/>

Bid Requirements

- Project Completion Dates and Liquidated Damages
 - 00520 Contract Agreement
 - Specifications Section 01 10 00 Summary
- 00700 General Conditions
 - Insurance Requirements Article 5
- 00711 and 00800 Supplemental Conditions

Bid Requirements

- 00860 Prevailing Wage Requirements
 - State of Minnesota Highway and Heavy
 - State of Minnesota Truck Rental Rates
 - Davis Bacon
 - Heavy for Tunnel Construction Activities
 - Highway for Remainder of Work

Bid Requirements: 2.1 Packaging of Bids

PART 2 BID SUBMITTAL

2.1 PACKAGING OF BIDS

A. The bid package consists of the following documents:

1. **Document 00410 Bid Form**
2. **Document 00440 Bid Bond** or other form of Bid Security
3. If the amount of the Bid exceeds \$100,000, either: 1) a currently-effective Affirmative Action Certificate of Compliance, or 2) **Document 00450 Affirmative Action Certification Statement**
4. If the amount of the Bid equals, or exceeds, \$500,000, **Document 00451 Equal Pay Certification Statement**
5. If the amount of the Bid exceeds \$25,000, **Document 00457 Certification Regarding Debarment, Suspension, Ineligibility and Voluntary Exclusion** (FTA or PFA Funding)

Bid Requirements: 2.1 Packaging of Bids

6. If the amount of the Bid exceeds \$100,000, **Document 00460 Buy America Certification** (FTA Funding)
7. If the amount of the Bid equals, or exceeds, \$100,000, **Document 00470 Lobbying Restriction Certification** (FTA or PFA Funding)
8. **Document 00485 Disadvantaged Business Enterprise Information and Certifications** (FTA Funding with Goal)
9. If the amount of the Bid exceeds, \$50,000, **Document 00495 Responsible Contractor Verification and Certification of Compliance and Attachment A-1, First-Tier Subcontractors List**
10. **Document 00885 Workforce Inclusion Commitment & Plan Part A – Certification**

Disadvantaged Business Enterprise Program

**Aaron Koski, Assistant Director
Equal Opportunity**

What is the DBE Program?

- Disadvantaged Business Enterprise
- Federal Equal Opportunity Program
- Any recipient of federal DOT funds
- Small business subcontracting goals



What is a DBE Firm?

- Small business at least 51% owned by, and controlled by, a socially and economically disadvantaged individual
- Subject to personal net worth cap and SBA size standards
- Certification through the Minnesota Unified Certification Program
- Directory of firms available at: www.mnucp.org

SWLRT Civil Construction

- 16% DBE participation goal
- Contractor must demonstrate at time of bid “Good Faith Effort” (GFE) toward meeting the goal by either:
 - Committing to meet or exceed the participation goal
< *or* >
 - Documenting all GFE steps taken prior to time of bid

Commercially Useful Function & Counting

- DBE firms must perform a “Commercially Useful Function” (CUF):
 - Case by case determination
 - CUF determination performed both at bid evaluation and during monitoring phase
- DBE counting
 - Supplier participation counted at 60%
 - Credit counting rules specific to trucking firms
 - Only work performed by the firm itself and its employee can count towards the goal

DBE Bid Forms

- 00485 Disadvantaged Business Enterprise Commitments & Good Faith Efforts Form
- Part A: Commitments (due at time of bid)
- Part B: Good Faith Efforts (due at time of bid)
- Part C: Letter of Intent & Ongoing GFE Plan (post-bid submittal)

Workforce Goals

- Percentage of total labor hours on the project to be performed by female, and minority individuals
- Minnesota Department of Human Rights (MDHR) Workforce Goals for Hennepin County:
 - 32% Minority
 - 6% Female

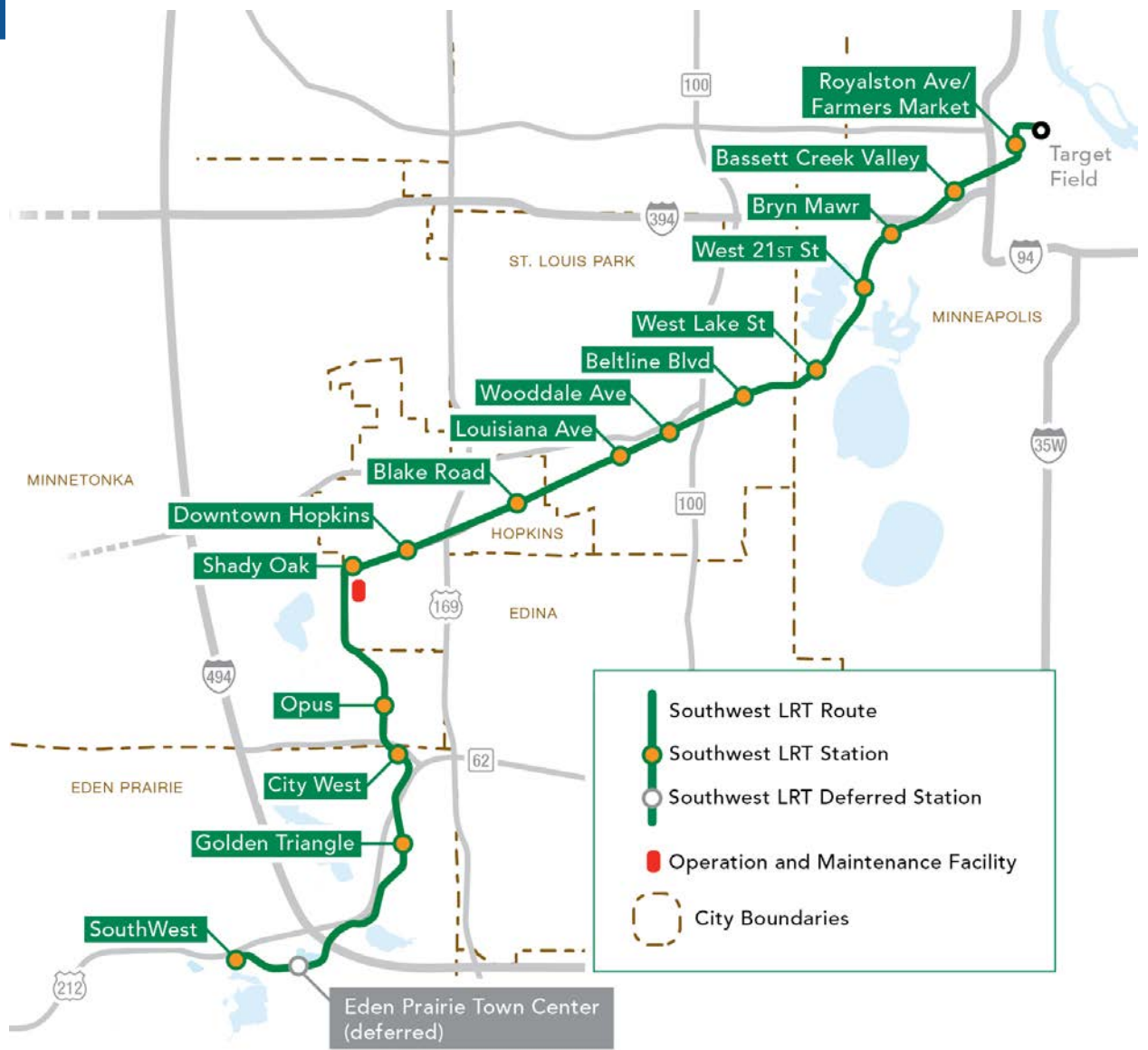
Overview of Project Specifications

Jim Alexander

SWLRT Project Director

Southwest LRT

- 14.5 miles double track
- 15 new stations
- \$1.858 billion total project budget
- 2017-2020 heavy construction
- 2021 begin passenger service
- 34,000 riders by 2040



Civil Contract Scope

- 15 Stations
 - Vertical circulation
 - West Lake Street
 - Bryn Mawr
 - Bassett Creek Valley



Civil Contract Scope

- Park-and-rides
 - 7 Surface lots with a total of 1,747 spaces
 - 1 Ramp at SouthWest Station with 2 elevators

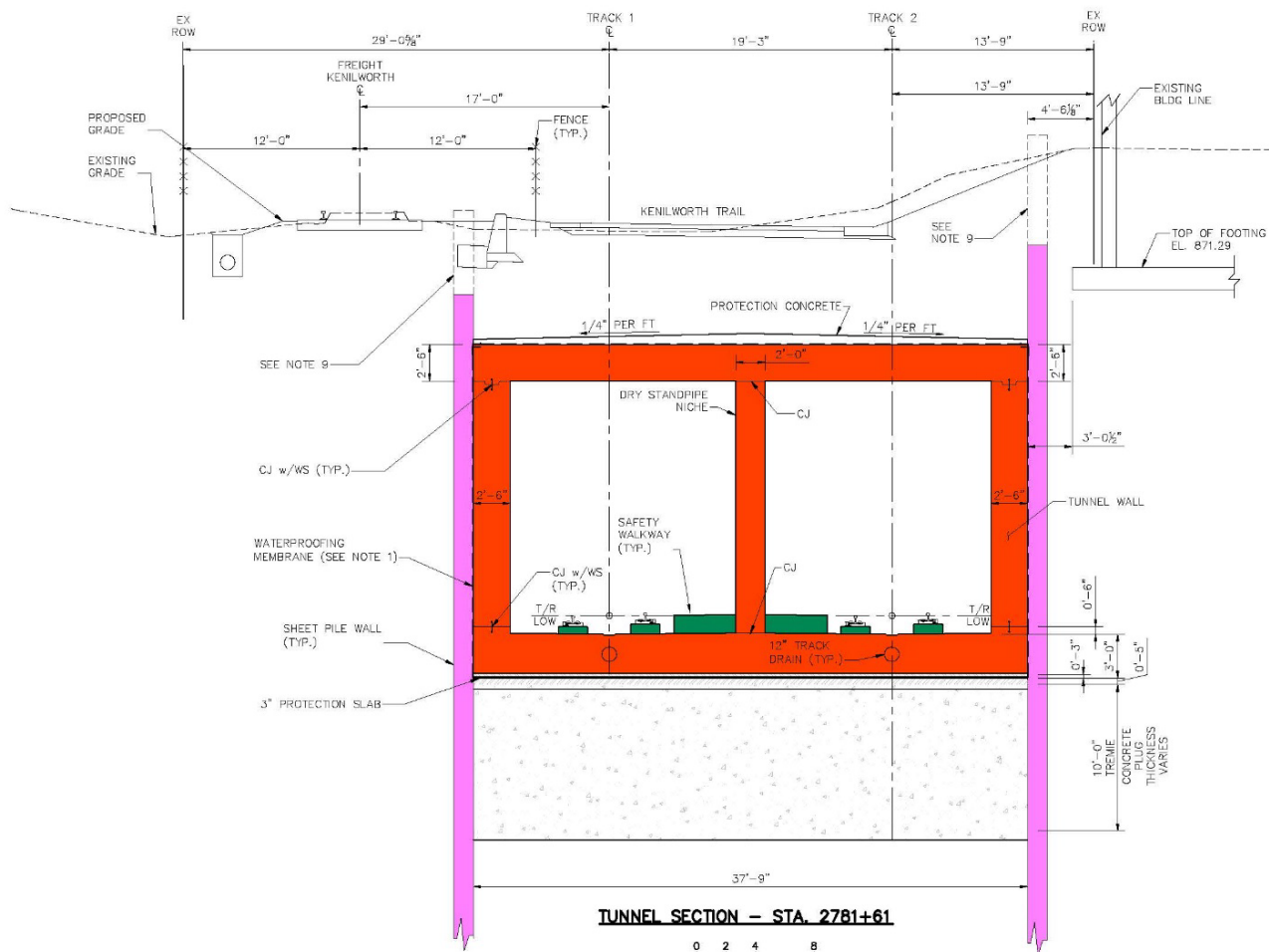


Civil Contract Scope

- 44 structures
 - 29 new bridges (LRT, Pedestrian, Roadway, Freight)
 - 7 existing bridges with modifications
 - 6 pedestrian tunnels
 - 2 cut and cover tunnels (TH62 582 ft., Kenilworth 2,236 ft)
- 15 at-grade crossings
- 117 retaining walls
- Track (153,440 TF)

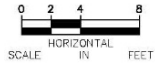
Civil Contract Scope

- Demolition of 14 existing buildings
- Soil improvements
- Roadways, curb, gutter, sidewalks and trails
- Traffic signals, striping and signage
- Systemwide cable trough/ductbank/foundations
- Utilities and drainage
- Urban design and landscaping
- Freight (BNSF, TCWR and CP)



NOTES:
 1. FOR NOTES, SEE SHEET E3-STU-TUN-TUNK-TYP-001.

TUNNEL SECTION - STA. 2781+61



NO.	DATE	DRAWN	CHECK	DESIGN	REVISION / SUBMITTAL

MB BY: **SR**
 02/18/16

100% DRAFT SUBMISSION - 04/27/16



CIVIL - VOLUME 5
KENILWORTH TUNNEL (BRIDGE 27C15)
TUNNEL SECTIONS
SHEET 3

DISCIPLINE: **STRUCTURES** SHEET NAME: **E3-STU-TUN-TUNK-TYP-003**

SHEET **60** OF **168**



Project Specifications

- Specifications include three main categories:
 1. Division 01: Construction Specifications Institute (CSI) MasterFormat - Project Requirements/Procedures
 2. Division 02-34: CSI MasterFormat – Technical Specifications
 3. Special Provisions (S, SB, SL, SS, ST, SZ and UT): Modifications to Standard Specifications including MnDOT and City Standards

Project Specifications

- Specification Roadmap - Technical Specification Format, Section 01 25 00
 - Primary Technical Specification Format (PTSF) for each Drawing Volume
 - PTSF Sample from Section 01 25 00

Table 1 - Drawing Volume PTSF		
Drawing Volume	Engineering Discipline	PTSF
Volume 1	Existing Conditions/Survey	MnDOT with Special Provisions
	Removals	MnDOT with Special Provisions
	Building Demolition	CSI MasterFormat
Volume 2	Civil, Roadway and Trails	MnDOT and City with Special Provisions
Volume 3	Track	CSI MasterFormat

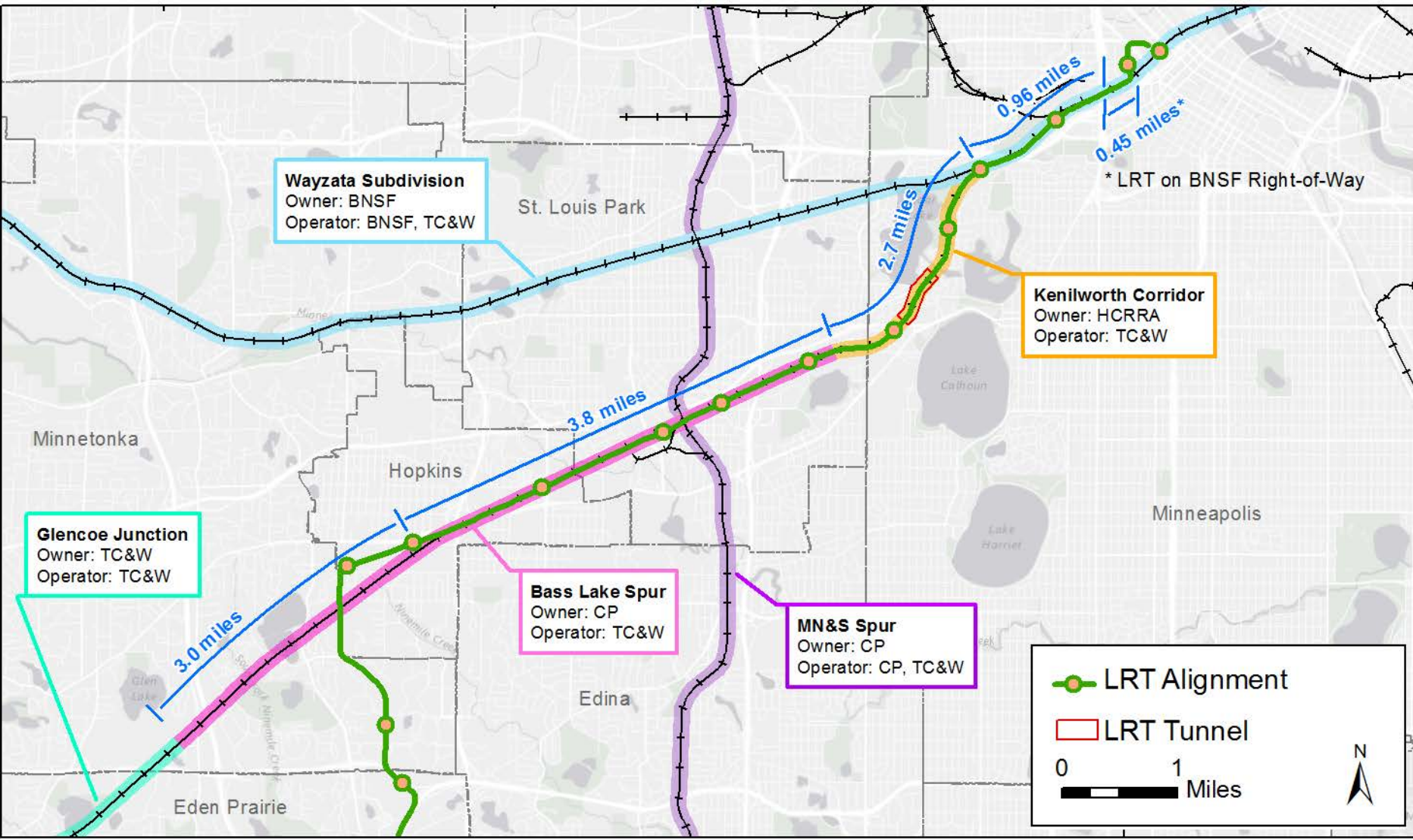
Quality Management Requirements

- Quality Management Requirements, Section 01 44 00
 - Identifies requirements for Contractor's Quality Management System
 - Describes requirements for Quality Plans
- Quality Assurance (QA), Section 01 43 00
 - QA Program overseen by Independent Quality Manager, assigned by Contractor
 - Staff must be independent from Contractor's field operations
 - Material tests performed by qualified Independent Testing Laboratory (ITL)
- Quality Control (QC), Section 01 45 00
 - Performed by Contractor's qualified staff or ITL

Quality Management Requirements

- Oversight Verification performed by Council
 - Review/audit Contractor's Quality Management System
 - Conduct observations to establish confidence that quality functions are performed thoroughly
- Inspections performed by Council
 - Special Inspections identified in Appendix P, Council Special Inspection Matrix

Existing Freight Rail Network



Freight Rail Construction

- BNSF Subdivision
 - Contractor responsible for work up to bottom of ballast
 - BNSF responsible for work ballast up
- Kenilworth Corridor and Bass Lake Spur
 - Contractor responsible for all work except distant signal near Cedar Lake Parkway and turnout at MN&S connection
 - BNSF responsible for distant signal
 - CP responsible for ballast and turnout at MN&S connection

Freight Rail Construction

- Contractor responsible for maintenance of Kenilworth Corridor and Bass Lake Spur
 - Track structure
 - Track structure maintained to FRA Class 1, 2, and 5, as specified in Freight Rail Coordination, Section 01 42 00
 - At-grade crossing signals
 - At-grade crossing signals maintained per CFR, 49, Part 234
 - From a time 7 days after LNTP to Final Completion

Freight Rail Construction

- Contractor Key Staff
 - Freight Rail Coordinator
 - Full time employee(s) responsible for work that affects the Freight Railroads as specified in Section 01 42 00
 - Freight Rail Track and Signal Inspectors / Maintainers
 - Full time (available 24/7) inspectors and maintainers as specified in Section 01 42 00
 - Freight Rail Safety Officer
 - Full time employee(s) responsible for compliance with Freight Railroad Safety Action Plan (FRSAP) as specified in Section 01 42 00

Freight Rail Construction

- Railroad Flagging Required
 - When work is within 25' of track centerline
 - When equipment has potential to be 25' of track centerline in a failed condition
 - As specified in Section 01 42 00 and Appendix R, BNSF Exhibit C, Part 1.05
 - Flagger provided by railroad as specified in Section 01 42 00
- Support of Excavation
 - Required when excavating below tie elevation as specified in Excavation and Embankment, Section S-30
- Vertical Clearances Allowed During Construction
 - As specified in, Appendix R, BNSF Exhibit C, Part 1.03.03

Freight Rail Construction

- Coordination
 - Contractor's Freight Railroad Management Plan
 - A detailed overall account of how the Contractor proposes to accomplish the work, includes:
 - Organization and staffing
 - Freight Railroad interface control
 - Safety and security management
 - Other items as specified in Section 01 42 00

Freight Rail Construction

- Site Specific Work Plans (SSWP)
 - A detailed account of work based on site specific conditions, includes:
 - Type of adjacency
 - Scope of Work
 - Schedule
 - Personnel and equipment
 - Contingency plans
 - Other items as specified in Section 01 42 00

Construction Outreach/Communications

- Best practices:
 - Outreach coordinators
 - Construction information workgroups
 - 24-hour hotline
 - Property/business owners meetings
 - Open houses/neighborhood meetings
 - Construction tours
 - Social media/website/media
 - Ads
 - Signage



Public Resources

- SWLRT.ORG
 - Virtual flyover tour
 - Visualization video
 - Station renderings
 - Copy of PowerPoint



More Information

Online:

www.SWLRT.org

Email:

SWLRT@metrotransit.org

Twitter:

www.twitter.com/southwestlrt



Civil Construction DBE/Prime Contractor Meet & Greet 2:00pm – 4:00pm

Mixer Details

- 5 primes
- 3 minutes
- Be respectful of time

Participating Prime Bidders

Southwest Transit Constructors

Southwest Rail Constructors

Lunda/C.S. McCrossan Join Venture

Ames-Kramer JV

Graham Barnard