



Joint Community and Business Advisory Committee

November 7, 2016



Today's Topics

- Welcome
- Station Design
 - Station boards
 - Breakout
 - Large group report
- Community Open Houses



Station Design



Station Design

- LRT stations provide access to the light rail system
- LRT stations provide **form** in terms of shelters, and **function** in terms of ticket vending machines, heaters, train information
- LRT stations and access are owned and maintained by Metro Transit
- LRT stations are one element of the larger transit system



Design Framework

- Respond to **lessons learned**
- Provide **safe and accessible** facilities
- Enhance **customer experience**
- Develop design **consistency**
 - Customer wayfinding
 - Constructability / cost
 - Maintenance
- Respond to **character & context** of each site
- Incorporate **Section 106 / Secretary of Interior** standards

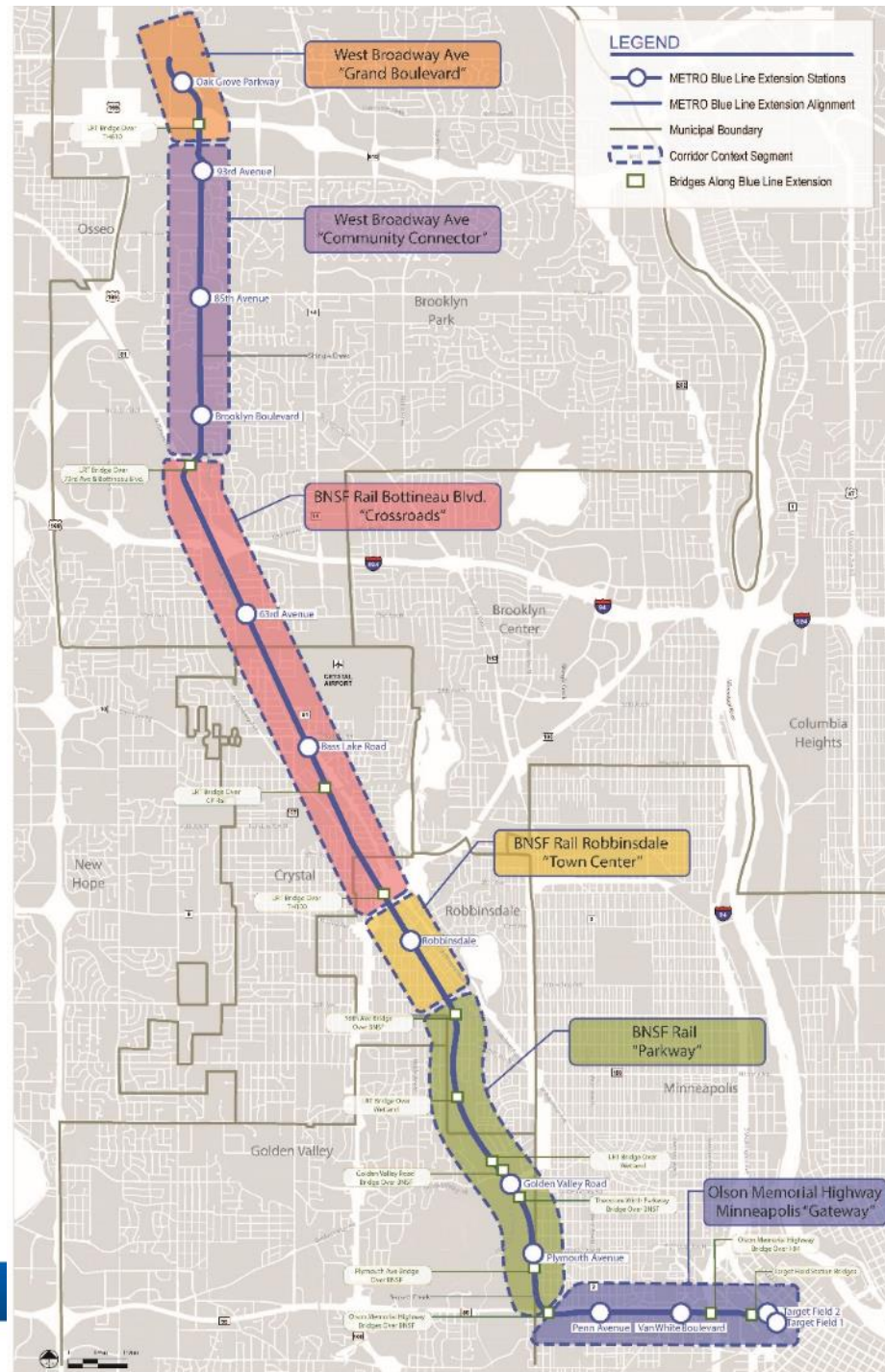


Design Framework

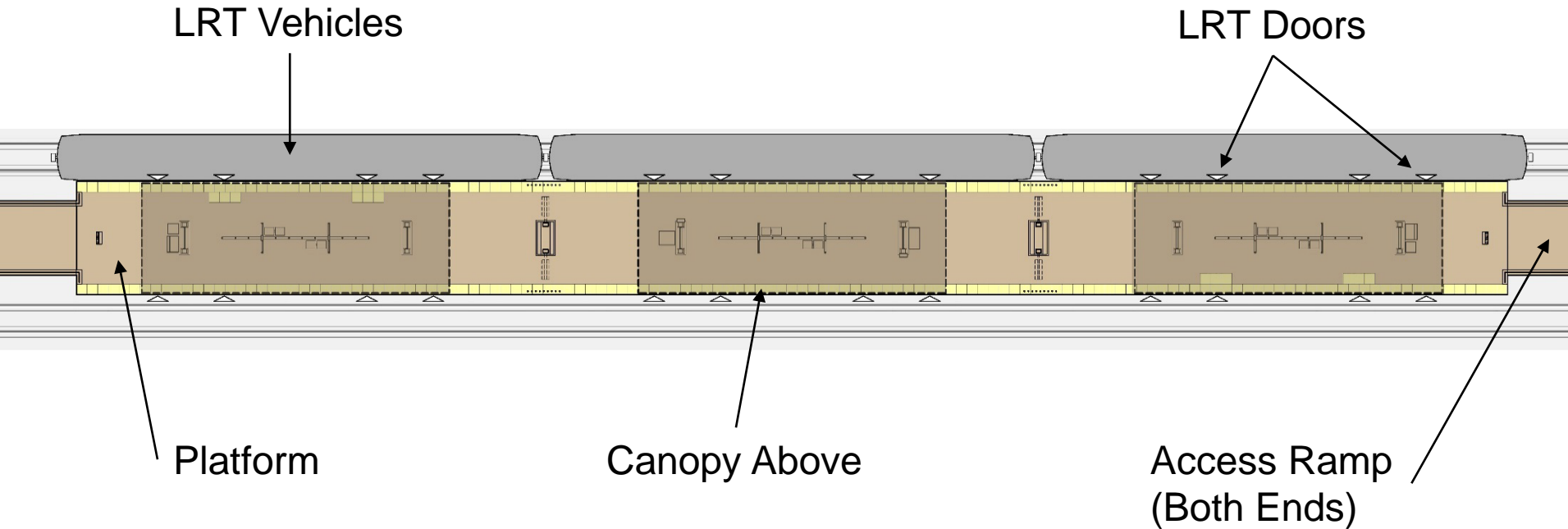
- BPO areas of variability to create identity for each station through use of color, materials, massing
- Metro Transit encourages partnerships with stakeholders & community members to facilitate addition of artwork along BLRT corridor



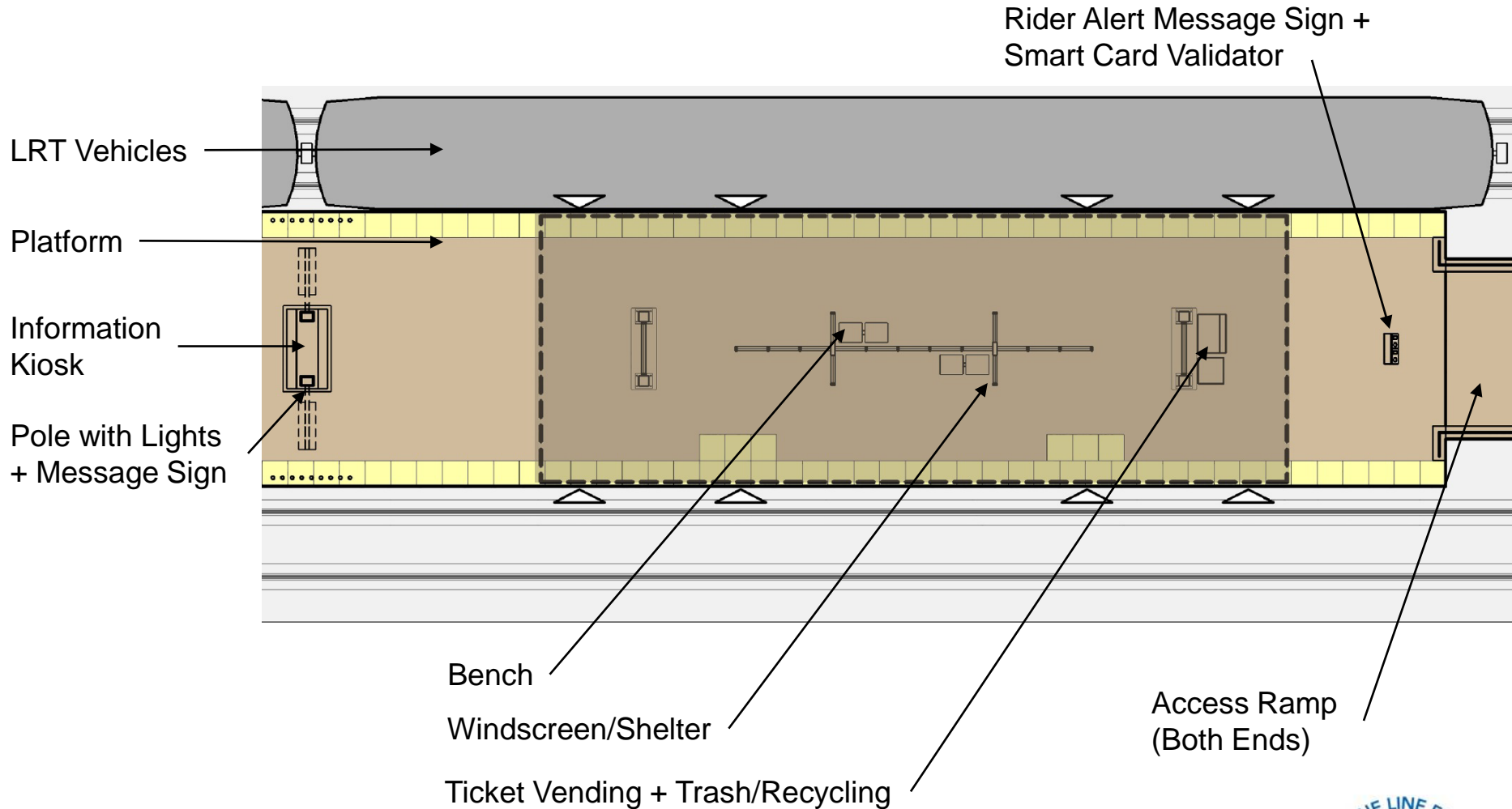
Corridor Framework



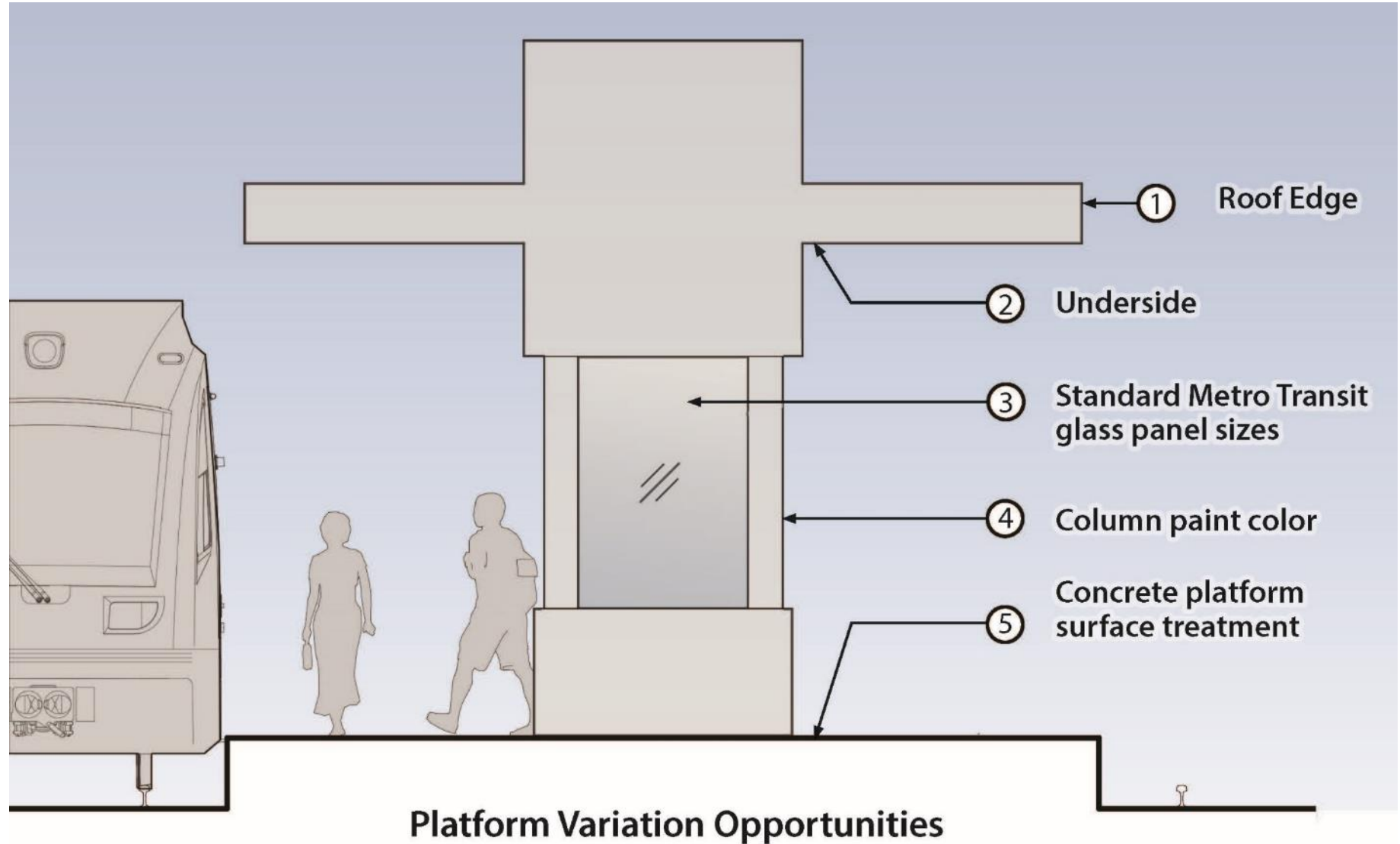
Platform Design



Platform Design



Opportunities for Variability



Draft: Work in Process

Station Design Review

- Station Design
 - Station board review
 - Breakout
 - On track with context and character?
 - What did you like?
 - What's missing?
 - Large group report



Community Open Houses

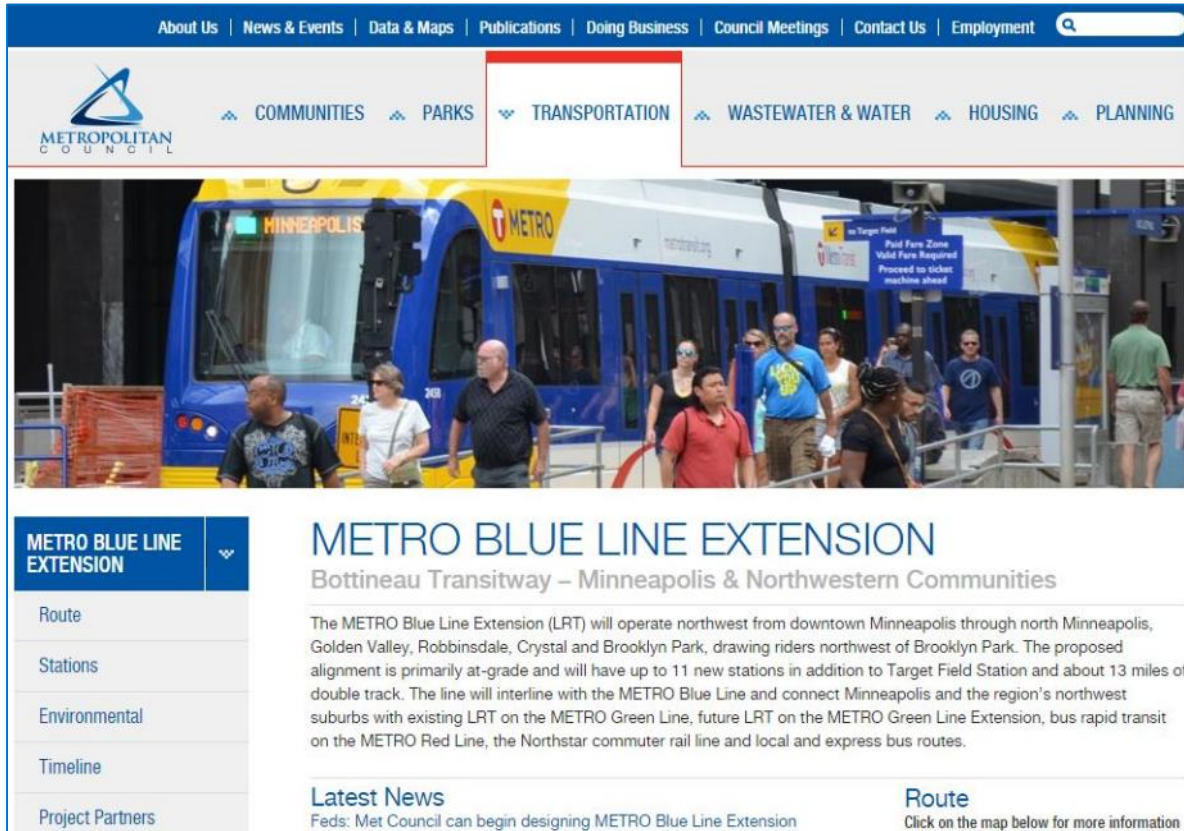


Station Design: Public Involvement

- Share station design concepts at Community Open Houses:
 - Nov 9: Minneapolis
 - Nov 10: Golden Valley
 - Nov 14: Crystal
 - Nov 16: Robbinsdale
 - Nov 17: Brooklyn Park
- Purpose of the community open houses:
 - Educate community about station design evolution
 - Receive feedback about station design concepts: Did we miss anything? Are we on the right track?



More Information



The screenshot shows the Metropolitan Council website with a navigation bar at the top containing links: About Us | News & Events | Data & Maps | Publications | Doing Business | Council Meetings | Contact Us | Employment. Below this is a secondary navigation bar with categories: COMMUNITIES, PARKS, TRANSPORTATION (highlighted with a red border), WASTEWATER & WATER, HOUSING, and PLANNING. The main content area features a large photo of a blue and yellow METRO bus with 'MINNEAPOLIS' and 'METRO' branding, with several people standing in front of it. Below the photo is a section titled 'METRO BLUE LINE EXTENSION' with a sub-header 'Bottineau Transitway – Minneapolis & Northwestern Communities'. The text describes the project: 'The METRO Blue Line Extension (LRT) will operate northwest from downtown Minneapolis through north Minneapolis, Golden Valley, Robbinsdale, Crystal and Brooklyn Park, drawing riders northwest of Brooklyn Park. The proposed alignment is primarily at-grade and will have up to 11 new stations in addition to Target Field Station and about 13 miles of double track. The line will interline with the METRO Blue Line and connect Minneapolis and the region's northwest suburbs with existing LRT on the METRO Green Line, future LRT on the METRO Green Line Extension, bus rapid transit on the METRO Red Line, the Northstar commuter rail line and local and express bus routes.' To the left of this text is a sidebar with a dropdown menu for 'METRO BLUE LINE EXTENSION' and links for Route, Stations, Environmental, Timeline, and Project Partners. Below the main text are two sections: 'Latest News' with the headline 'Feds: Met Council can begin designing METRO Blue Line Extension' and 'Route' with the text 'Click on the map below for more information'.

About Us | News & Events | Data & Maps | Publications | Doing Business | Council Meetings | Contact Us | Employment

METROPOLITAN COUNCIL

COMMUNITIES PARKS **TRANSPORTATION** WASTEWATER & WATER HOUSING PLANNING

METRO BLUE LINE EXTENSION

Route

Stations

Environmental

Timeline

Project Partners

METRO BLUE LINE EXTENSION

Bottineau Transitway – Minneapolis & Northwestern Communities

The METRO Blue Line Extension (LRT) will operate northwest from downtown Minneapolis through north Minneapolis, Golden Valley, Robbinsdale, Crystal and Brooklyn Park, drawing riders northwest of Brooklyn Park. The proposed alignment is primarily at-grade and will have up to 11 new stations in addition to Target Field Station and about 13 miles of double track. The line will interline with the METRO Blue Line and connect Minneapolis and the region's northwest suburbs with existing LRT on the METRO Green Line, future LRT on the METRO Green Line Extension, bus rapid transit on the METRO Red Line, the Northstar commuter rail line and local and express bus routes.

Latest News

Feds: Met Council can begin designing METRO Blue Line Extension

Route

Click on the map below for more information

Website: BlueLineExt.org

Email: BlueLineExt@metrotransit.org

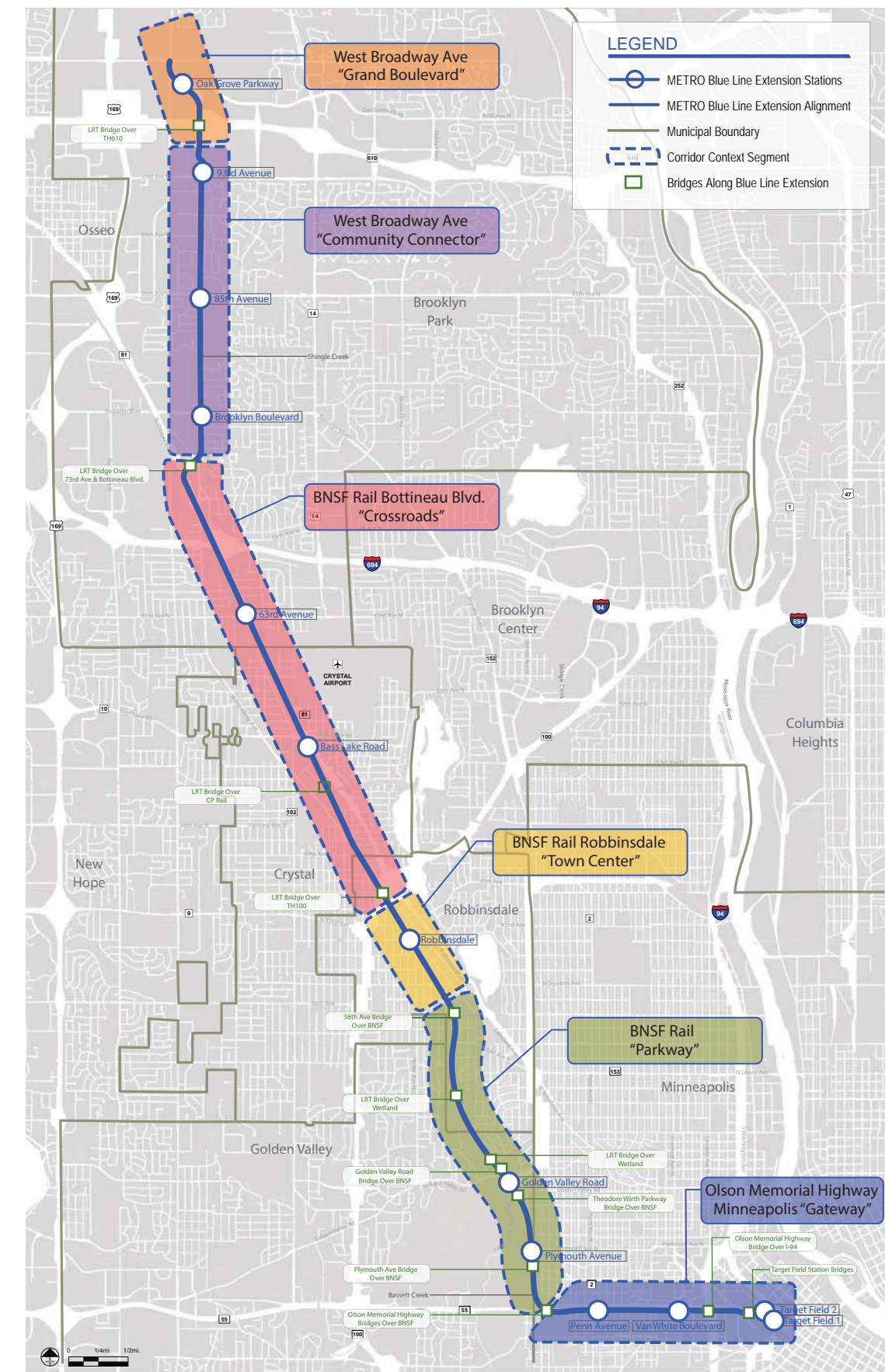
Twitter: [@BlueLineExt](https://twitter.com/BlueLineExt)



Blue Line LRT Extension

LIGHT RAIL PLATFORM AND STATION DESIGN

CORRIDOR FRAMEWORK MAP



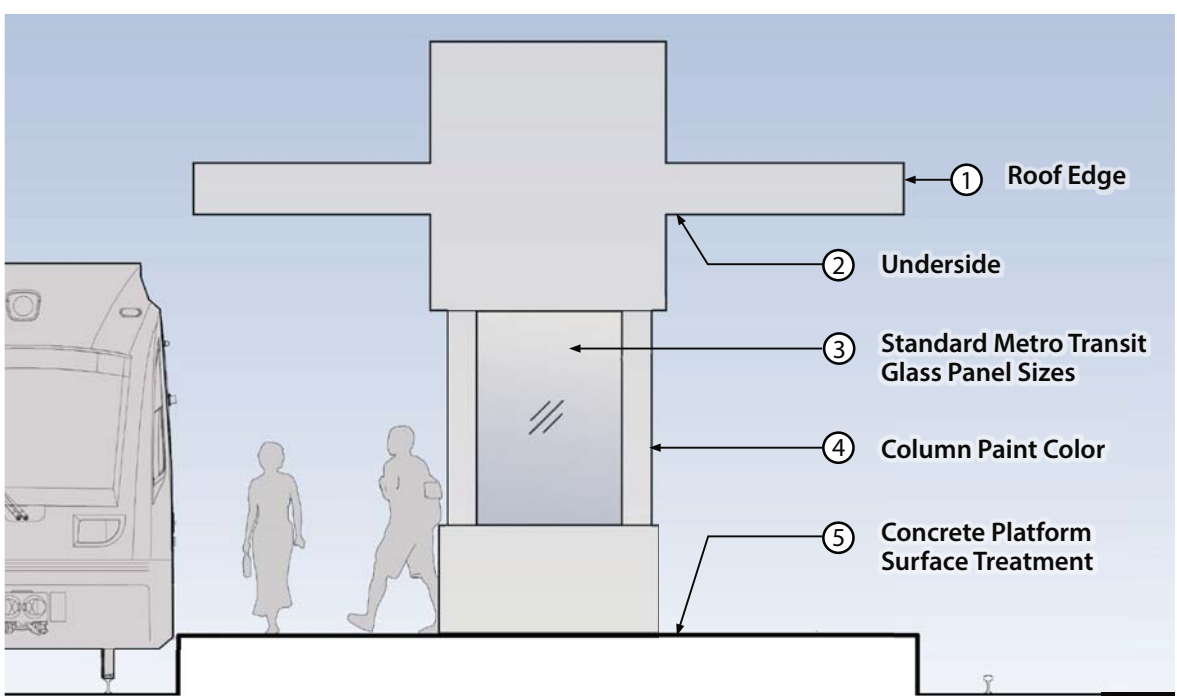
TYPICAL PLATFORM ELEMENTS



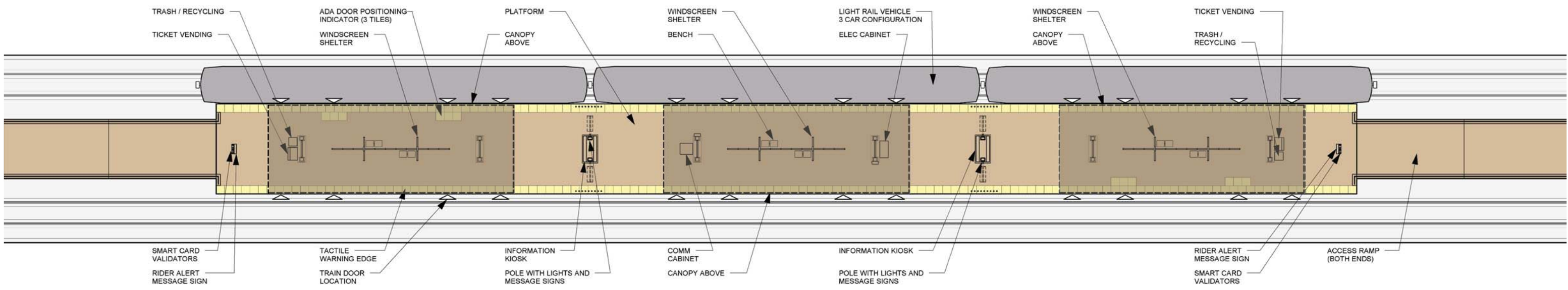
TYPICAL STATION SITE ELEMENTS

- Pedestrian Access
- Bike Facilities
- Wayfinding
- Landscape
- Stormwater BMPs
- Bus Facilities
- Passenger Drop-Off
- Park-and-Ride

PLATFORM VARIATION OPPORTUNITIES



BLUE LINE EXTENSION PLATFORM



DRAFT
WORK IN PROCESS



Blue Line LRT Extension

MINNEAPOLIS VAN WHITE BLVD DESIGN CONCEPTS



URBAN DOWNTOWN GATEWAY

VISIBLE INSTITUTIONS

ACTIVE

FOOT TRAFFIC

HISTORIC LIBRARY

COMMERCIAL GROCERY STORE

TRAFFIC

BIKES

GREEN

DIVERSITY

ALIVE

HISTORIC AREA

SIMILAR TO PENN DESTINATION DENSITY

BOLD AND BRIGHT

EXPANSIVE

OPEN AND VISIBLE

COMMUNITY

CONNECTION TO DOWNTOWN DESTINATION

MOVEMENT IN REGION

TRANSITION CONNECTION

UNIQUE

SAFETY

PLANNED COMMUNITY

CONTEXT & CHARACTER WORKSHOPS

URBAN DOWNTOWN GATEWAY

VISIBLE INSTITUTIONS

ACTIVE

FOOT TRAFFIC

HISTORIC LIBRARY

COMMERCIAL GROCERY STORE

TRAFFIC

BIKES

GREEN

DIVERSITY

ALIVE

HISTORIC AREA

SIMILAR TO PENN DESTINATION DENSITY

BOLD AND BRIGHT

EXPANSIVE

OPEN AND VISIBLE

COMMUNITY

CONNECTION TO DOWNTOWN DESTINATION

MOVEMENT IN REGION

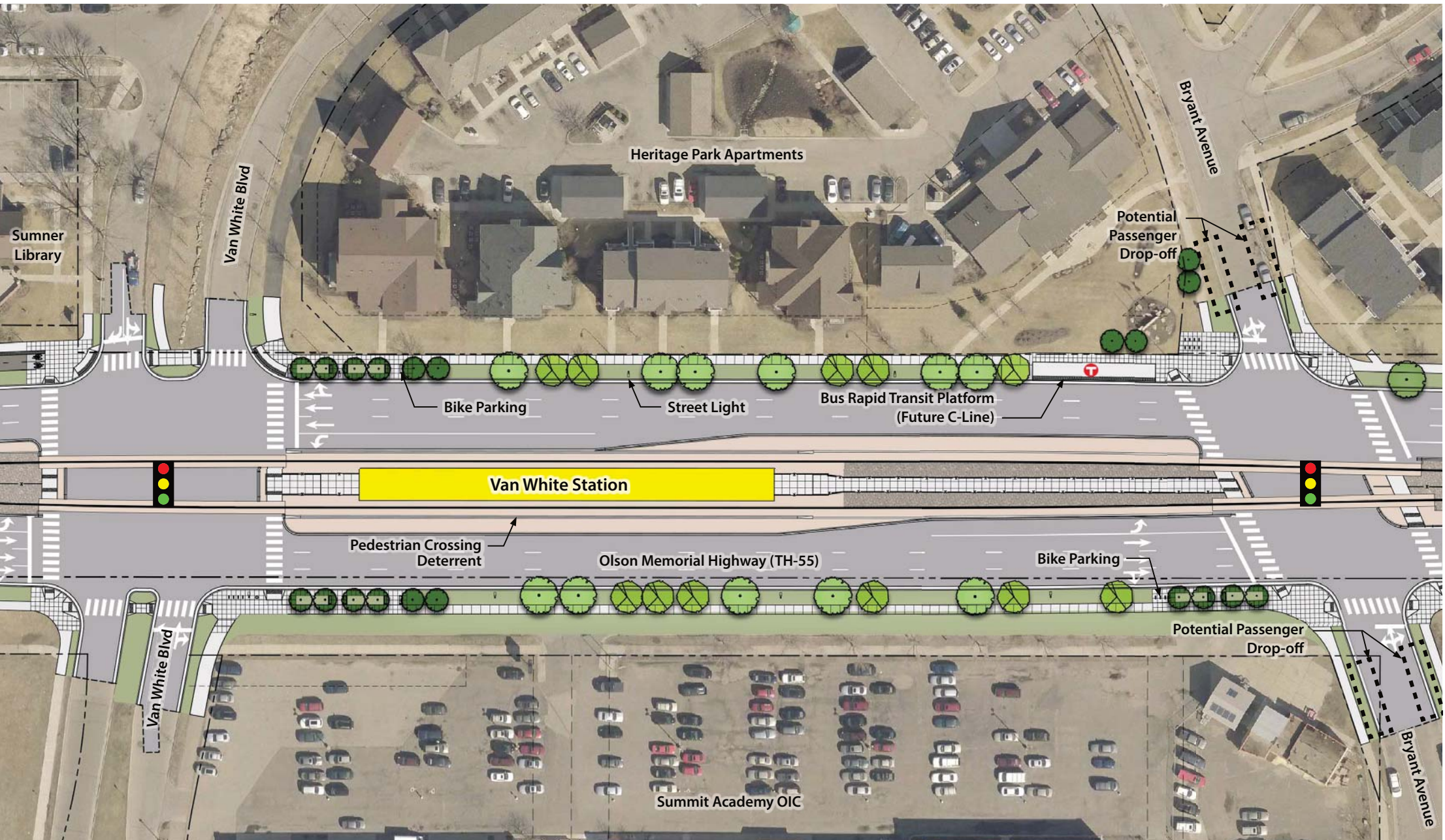
TRANSITION CONNECTION

UNIQUE

SAFETY

PLANNED COMMUNITY

STATION DESIGN CONCEPTS



Site Plan



View from platform entry looking West



View from sidewalk looking Northeast

DRAFT
WORK IN PROCESS



Blue Line LRT Extension

MINNEAPOLIS PENN AVE STATION DESIGN CONCEPTS



MAJOR TRANSIT CORRIDOR
COMMUNITY ART

EXPANSIVE
URBAN BEAUTY
NO PARKING
VEHICLES

GREEN
DROP-OFF NEEDS
CHANGE
FUNCTION

OLSON AS BARRIER

COMMUNITY CORRIDOR
HISTORIC
BUSY
NEIGHBORHOODS
COMMERCIAL ACTIVITY
CONNECTIONS TO MAJOR STREETS
URBAN
DEVELOPMENT
RESIDENTIAL BLOCKS
CONNECTIVITY
NEIGHBORHOOD TO DOWNTOWN TRANSITION
"NEIGHBORHOOD STATION"

CONTEXT & CHARACTER WORKSHOPS

MAJOR TRANSIT CORRIDOR
COMMUNITY ART

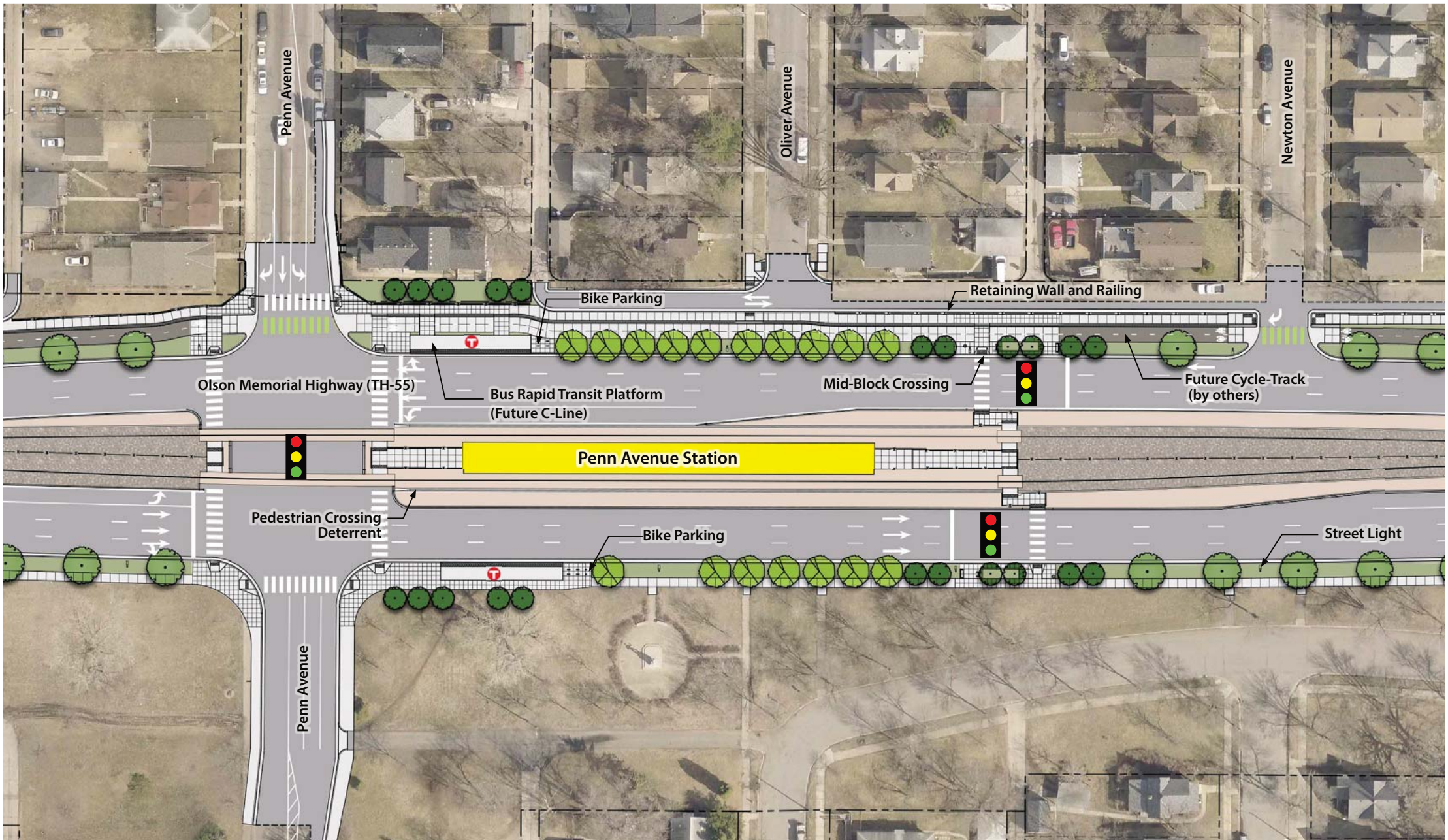
EXPANSIVE
URBAN BEAUTY
NO PARKING
VEHICLES

GREEN
DROP-OFF NEEDS
CHANGE
FUNCTION

OLSON AS BARRIER

COMMUNITY CORRIDOR
HISTORIC
BUSY
NEIGHBORHOODS
COMMERCIAL ACTIVITY
CONNECTIONS TO MAJOR STREETS
URBAN
DEVELOPMENT
RESIDENTIAL BLOCKS
CONNECTIVITY
NEIGHBORHOOD TO DOWNTOWN TRANSITION
"NEIGHBORHOOD STATION"

STATION DESIGN CONCEPTS



Site Plan



View from platform entry looking East



View from sidewalk looking Northwest

Blue Line LRT Extension

GOLDEN VALLEY PLYMOUTH AVE STATION DESIGN CONCEPTS

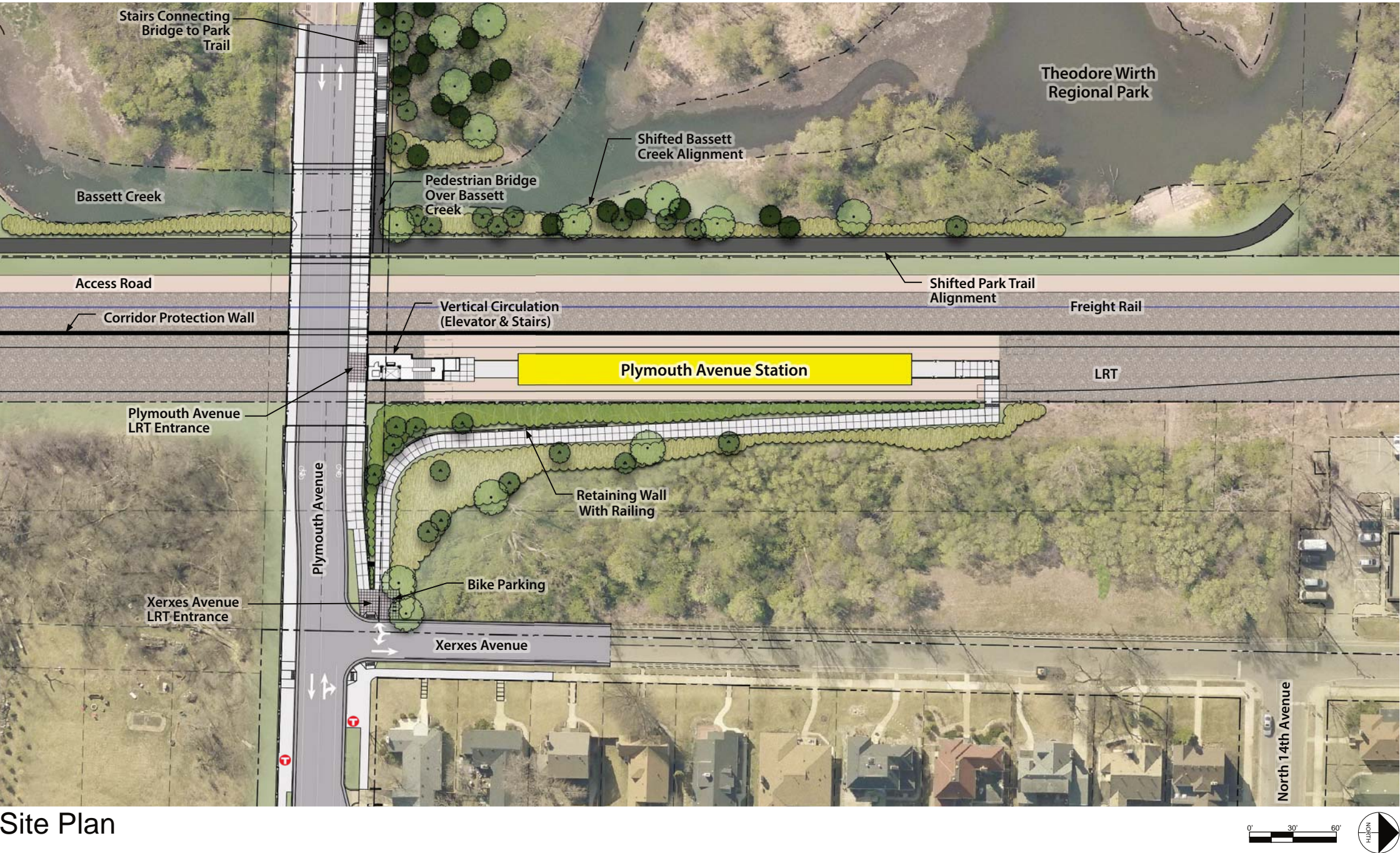


CONTEXT & CHARACTER WORKSHOPS

PARK TO NEIGHBORHOODS
OPEN VISTAS
NATURAL FORMS
CREEK LINEAR
BARRIERS
GATEWAY
CONFLUENCE
ACCESS
SUNKEN
EDGE OF CITY MEETS NATURE
“THE PARK’S STATION”
DIFFERENCE BETWEEN NIGHT AND DAY
“SHOULD I BE HERE?”
INFORMAL USES
FREIGHT CORRIDOR
HISTORIC BUILDINGS
TRANSITION
HISTORIC
HISTORY AND FUNCTION
REGIONAL DESTINATION

PARK TO NEIGHBORHOODS
OPEN VISTAS
NATURAL FORMS
CREEK LINEAR
BARRIERS
GATEWAY
CONFLUENCE
ACCESS
SUNKEN
EDGE OF CITY MEETS NATURE
“THE PARK’S STATION”
DIFFERENCE BETWEEN NIGHT AND DAY
“SHOULD I BE HERE?”
INFORMAL USES
FREIGHT CORRIDOR
HISTORIC BUILDINGS
TRANSITION
HISTORIC
HISTORY AND FUNCTION
REGIONAL DESTINATION

STATION DESIGN CONCEPTS



Site Plan



View from bridge looking East



Vertical circulation building access



View from sidewalk to LRT platform

DRAFT
WORK IN PROCESS



Blue Line LRT Extension

GOLDEN VALLEY RD STATION DESIGN CONCEPTS



CONTEXT & CHARACTER WORKSHOPS

ACCESS TO GRAND ROUNDS HISTORY VISIBILITY LINEAR CONTAINED NEIGHBORHOOD STATION 45TH PARALLEL

NATURE GATEWAY TO GOLDEN VALLEY CONVENIENCE PARKING CROSSROADS RAILROADS LOCALIZED TRAILHEAD BACKDOOR TO PARK CONNECTIONS WOODED ENVIRONMENT AUTOS, BIKES, PEDESTRIANS

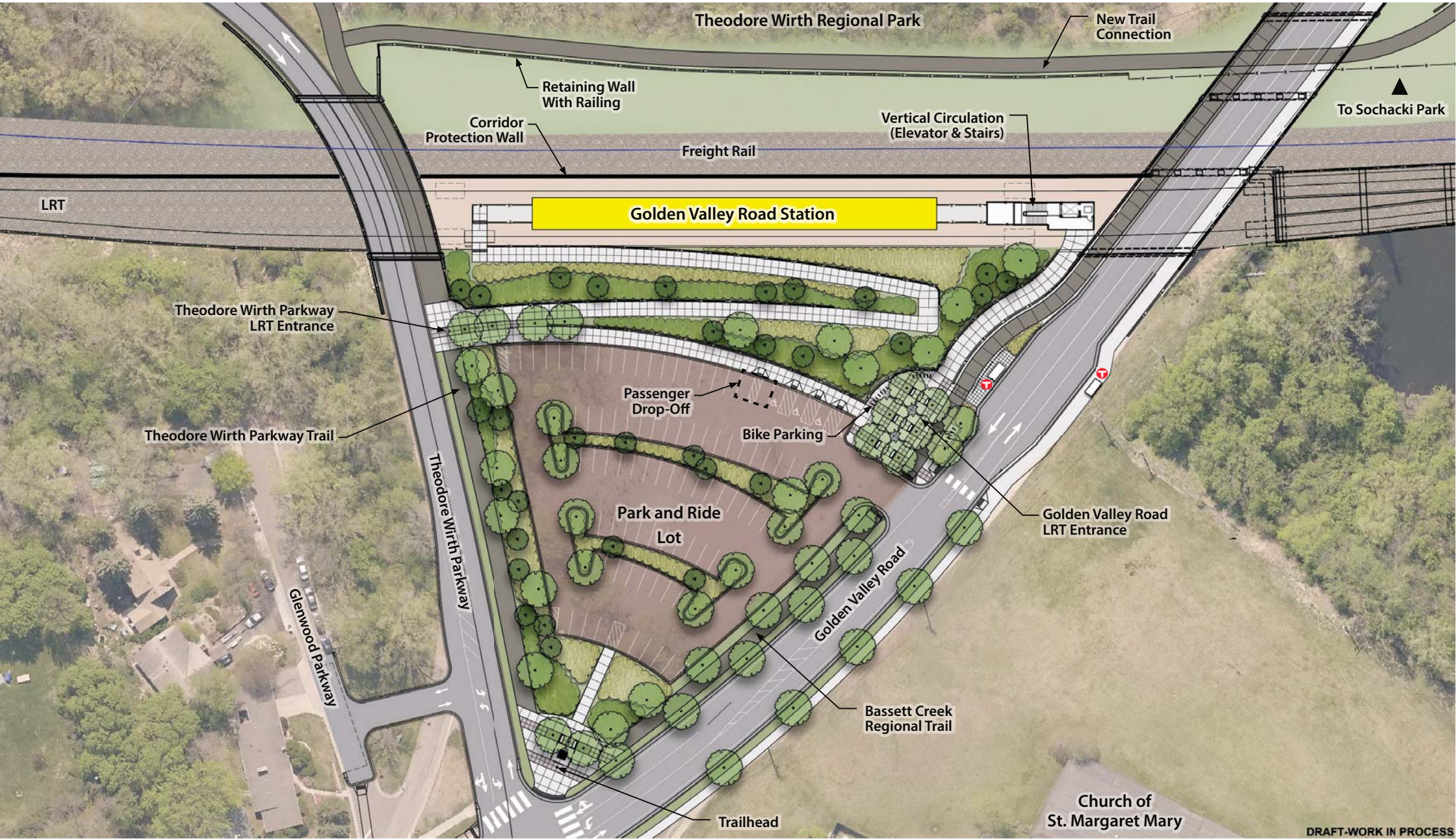
NAVIGATIONAL CHALLENGES HIDDEN

ACCESS TO GRAND ROUNDS HISTORY VISIBILITY LINEAR CONTAINED NEIGHBORHOOD STATION 45TH PARALLEL

NATURE GATEWAY TO GOLDEN VALLEY CONVENIENCE PARKING CROSSROADS RAILROADS LOCALIZED TRAILHEAD BACKDOOR TO PARK CONNECTIONS WOODED ENVIRONMENT AUTOS, BIKES, PEDESTRIANS

NAVIGATIONAL CHALLENGES HIDDEN

STATION DESIGN CONCEPTS



Site Plan



View towards rail corridor



Vertical circulation building access



View from sidewalk to LRT platform

DRAFT
WORK IN PROCESS



Blue Line LRT Extension

ROBBINSDALE ROBBINSDALE STATION DESIGN CONCEPTS



CONTEXT & CHARACTER WORKSHOPS

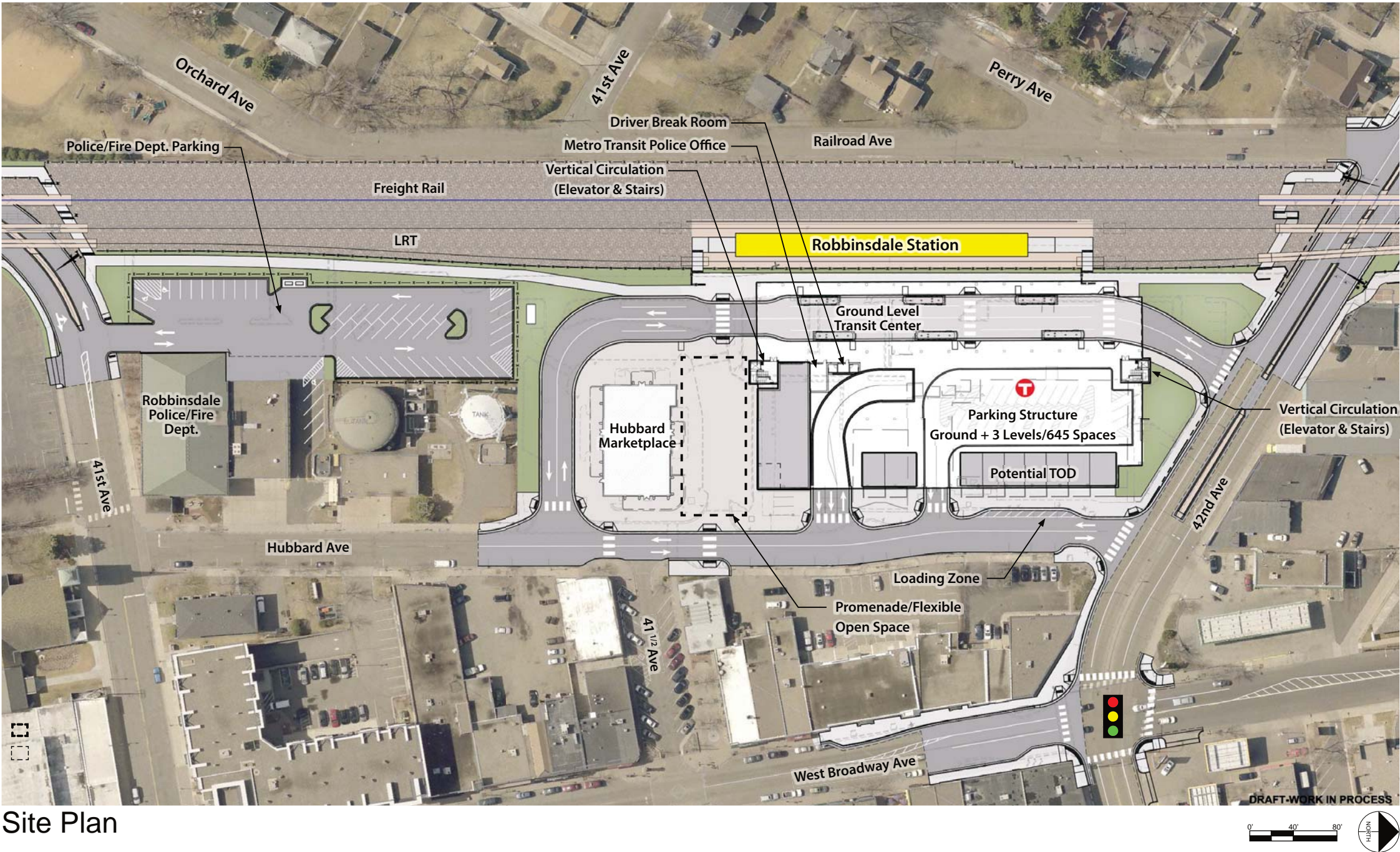
DOWNTOWN FEEL
PEDESTRIAN ENVIRONMENT
HISTORIC
AUTHENTIC
WATER TOWER
MAIN STREET
PLANTINGS
CITY BAND
ENTRANCE TO DOWNTOWN
NORTH MEMORIAL

HUBBARD MARKET LIBRARY
ICONIC AND IDENTIFIABLE
WHIZ-BANG RAILROAD
RESTAURANTS
GATHERING PLACE
VITALITY
CONNECTION
WALKABLE
BIRDTOWN
OLD COMMERCIAL CENTER

DOWNTOWN FEEL
PEDESTRIAN ENVIRONMENT
HISTORIC
AUTHENTIC
WATER TOWER
MAIN STREET
PLANTINGS
CITY BAND
ENTRANCE TO DOWNTOWN
NORTH MEMORIAL

HUBBARD MARKET LIBRARY
ICONIC AND IDENTIFIABLE
WHIZ-BANG RAILROAD
RESTAURANTS
GATHERING PLACE
VITALITY
CONNECTION
WALKABLE
BIRDTOWN
OLD COMMERCIAL CENTER

STATION DESIGN CONCEPTS



Site Plan



View from track crossing looking Northeast



View from Railroad Ave looking Southeast



View from Hubbard Ave looking Northwest

DRAFT
WORK IN PROCESS



Blue Line LRT Extension

CRYSTAL BASS LAKE RD STATION DESIGN CONCEPTS



MIXTURE OF USES

FOOT TRAFFIC CONCERNS

“OLD SCHOOL”

PARK AND RIDE CONNECTION

RETAIL

BITS OF EVERYTHING

COMMERCIAL ACCESS

WAVES OF REDEVELOPMENT

MAIN STREET

CRYSTAL AUTO-ORIENTED

AIRPORT

ENTRYWAY

INDUSTRIAL-FEEL

REDUCE IMPACT

“WHAT IS THIS PLACE?”

DISAPPEAR INTO LANDSCAPE

ACCESS TO SHOPPING

GREENERY

HEIGHTENED VISIBILITY

BECOME WELCOMING

DOWNTOWN

CONNECTION TO PARK

CELL TOWER

PIECEMEAL

TRANSITION

CONTEXT & CHARACTER WORKSHOPS

SEEKING IDENTITY

CROSSROADS

MIXTURE OF USES

FOOT TRAFFIC CONCERNS

“OLD SCHOOL”

PARK AND RIDE CONNECTION

RETAIL

BITS OF EVERYTHING

COMMERCIAL ACCESS

WAVES OF REDEVELOPMENT

MAIN STREET

CRYSTAL AUTO-ORIENTED

AIRPORT

ENTRYWAY

INDUSTRIAL-FEEL

REDUCE IMPACT

“WHAT IS THIS PLACE?”

DISAPPEAR INTO LANDSCAPE

ACCESS TO SHOPPING

GREENERY

HEIGHTENED VISIBILITY

BECOME WELCOMING

DOWNTOWN

CONNECTION TO PARK

CELL TOWER

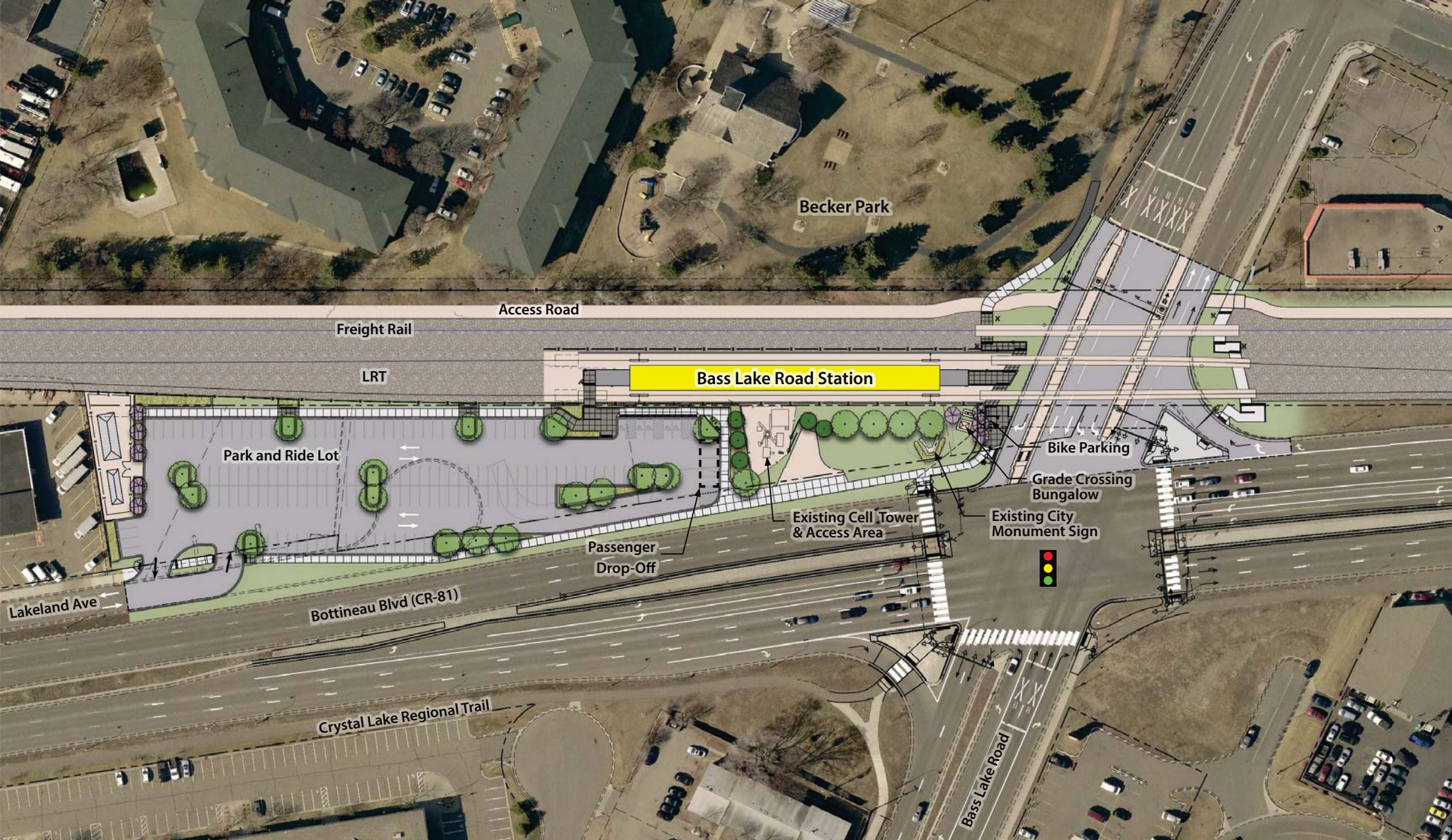
PIECEMEAL

TRANSITION

STATION DESIGN CONCEPTS

SEEKING IDENTITY

CROSSROADS



Site Plan



View from platform entry looking South



View from park and ride lot looking Northwest

DRAFT
WORK IN PROCESS



Blue Line LRT Extension

BROOKLYN PARK 63RD AVE STATION DESIGN CONCEPTS



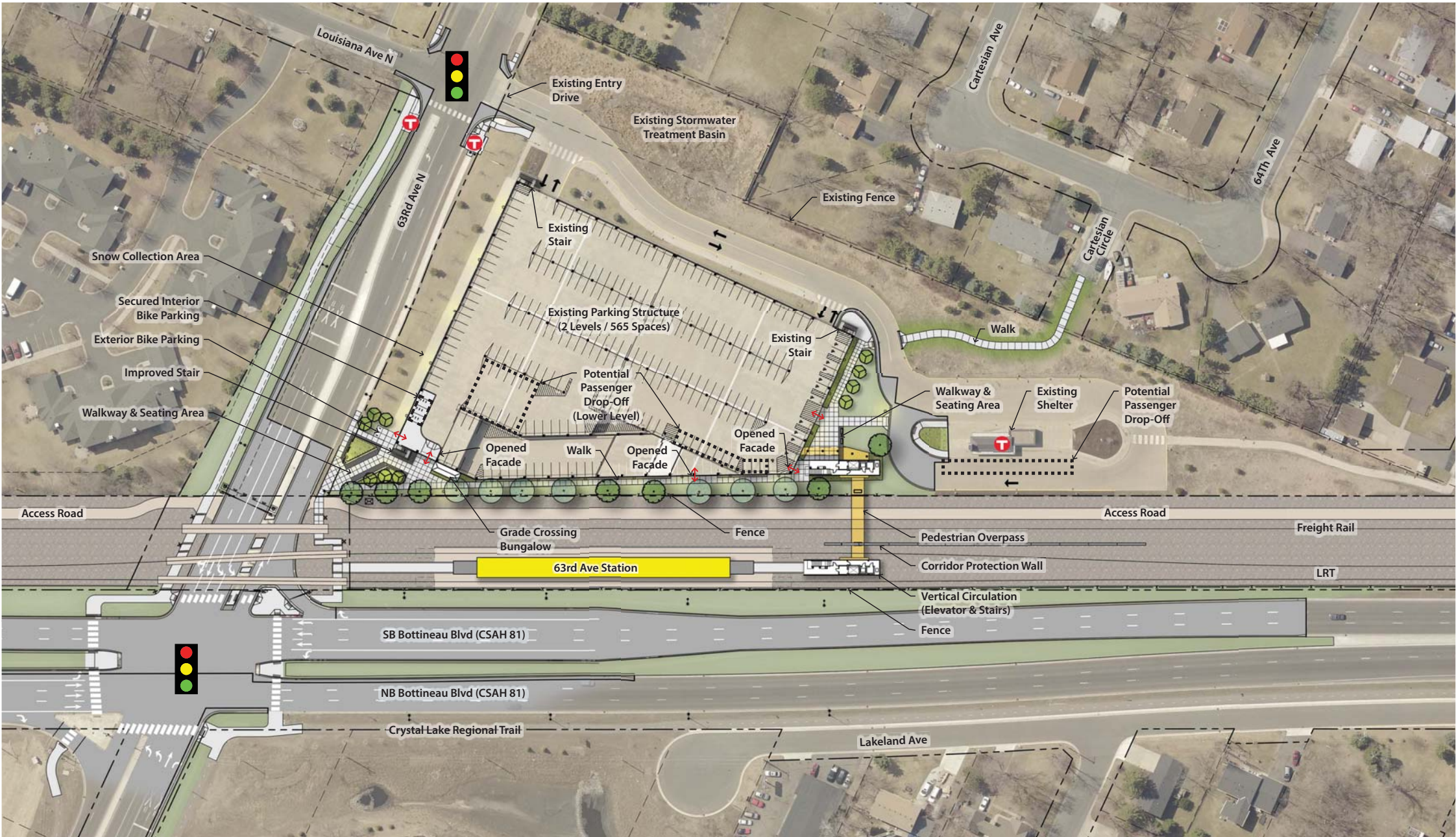
CONNECTIONS

REGIONAL TRAIL
FUTURE DENSITY DESIRE
CAR-ORIENTED
PARK AND RIDE CONNECTION
PASS-THROUGH
SHOPPING OPPORTUNITY
COMMERCIAL ACCESS
WAVES OF REDEVELOPMENT
GATHERING
WARMTH
AUTO-ORIENTED
TRANSIT NEED
WELCOMING FEEL
RESIDENTIAL
NEIGHBORHOOD
ROAD IMPACT ON BUSINESS
ZERO VEHICLE HOUSEHOLDS
CREATE PLACE
BOLD COLORS / PATTERNS
DON'T OVERDO IT
CAN'T SEE
FROM ROAD
CLEARING
UNFINISHED
SPREAD OUT
CONTEXT & CHARACTER WORKSHOPS

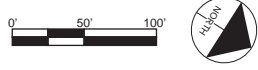
NEED FOR PLAZA

CROSSROADS

STATION DESIGN CONCEPTS



Site Plan



View from LRT platform towards pedestrian overpass



View from sidewalk looking Northwest



Aerial view of 63rd Ave Station

DRAFT
WORK IN PROCESS



Blue Line LRT Extension

BROOKLYN PARK BROOKLYN BLVD STATION DESIGN CONCEPTS



COMMERCIAL HUB

ARTISTIC EXPRESSION

SAFETY

DIVERSITY

AUTO-ORIENTED

PEDESTRIAN CIRCULATION

EXPRESSION OF COMMUNITY

WAYFINDING

RETAIL

VIBRANT

DESTINATION

TRANSIT CONNECTIONS

CULTURAL

TREES

LIGHTING

VISIBILITY

INTENSIFICATION

BUSY

TIMELESS FEEL

PLAZA

TRANSIT DEPENDENT

CONTEXT & CHARACTER WORKSHOPS

COMMERCIAL HUB

ARTISTIC EXPRESSION

SAFETY

DIVERSITY

AUTO-ORIENTED

PEDESTRIAN CIRCULATION

EXPRESSION OF COMMUNITY

WAYFINDING

RETAIL

VIBRANT

DESTINATION

TRANSIT CONNECTIONS

CULTURAL

TREES

LIGHTING

VISIBILITY

INTENSIFICATION

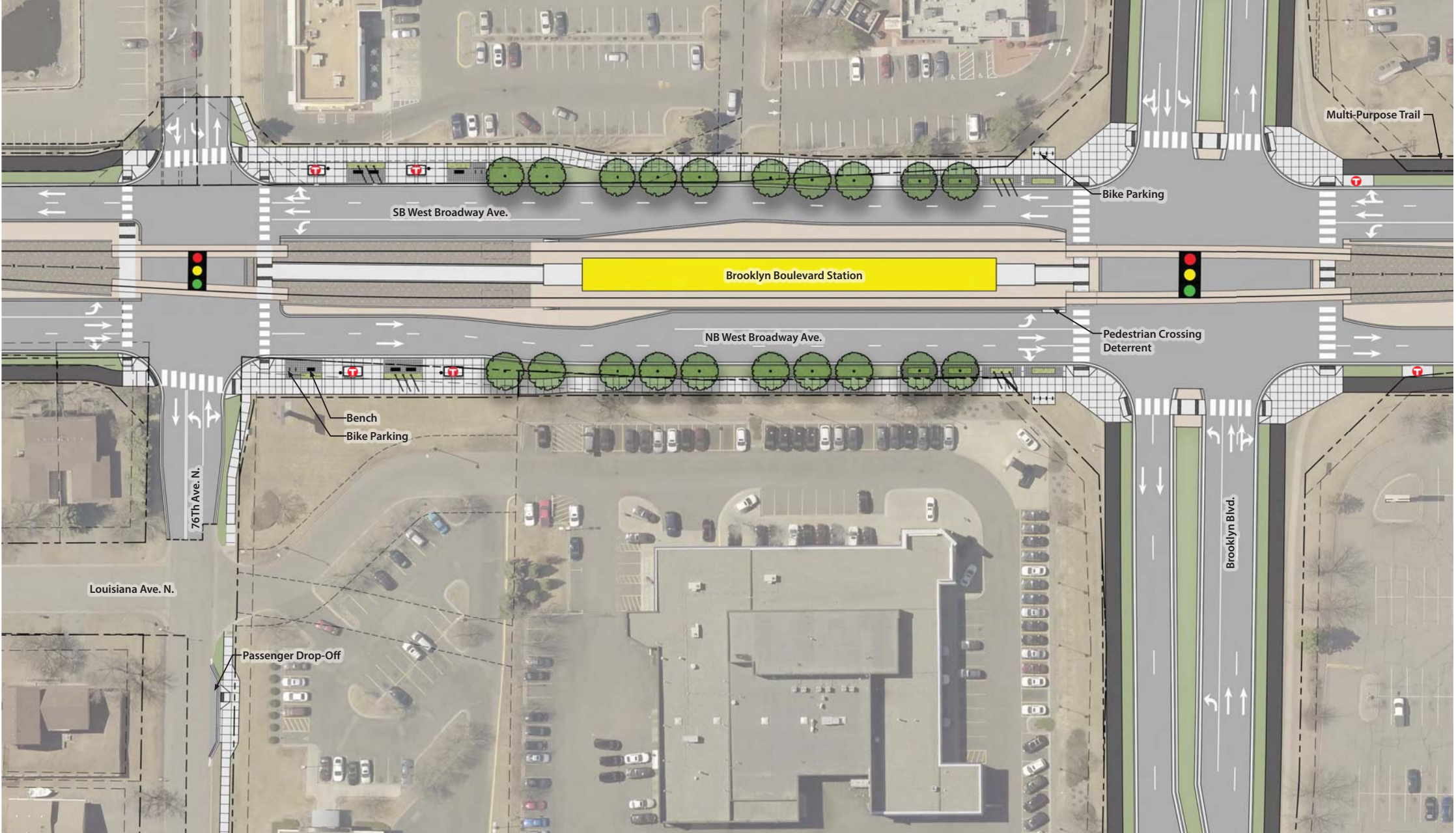
BUSY

TIMELESS FEEL

PLAZA

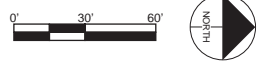
TRANSIT DEPENDENT

STATION DESIGN CONCEPTS



Site Plan

Note: The streetscape design for West Broadway Ave. is being developed in coordination with the Visioning Team with input from the City, County, and Community. Improvements shown on the station site plan do not imply that the LRT Project will provide them. Final determination of funding sources for the streetscape features is yet to be determined.



View from platform entry looking North



View from sidewalk looking Northwest

DRAFT
WORK IN PROCESS



Blue Line LRT Extension

BROOKLYN PARK 85TH AVE STATION DESIGN CONCEPTS



PRIDE FOR INSTITUTIONS
PARKING
BUS STOPS

ENTRANCE TO THE FUTURE
CIVIC SPACE
LOSS OF TREES
EDGES
CAMPUS
GENERATIONAL USE
CARPOOLS
LIBRARY
LEARNING
MODERN DESIGN
PEDESTRIAN FACILITIES

PLAZA
CORRIDOR
TRANSITION FROM PUBLIC TO PRIVATE
RESIDENTIAL UNEASINESS
DESTINATION
ARTS AND EDUCATION
STUDENTS
STATION BLENDS WITH MODERN ARCHITECTURE

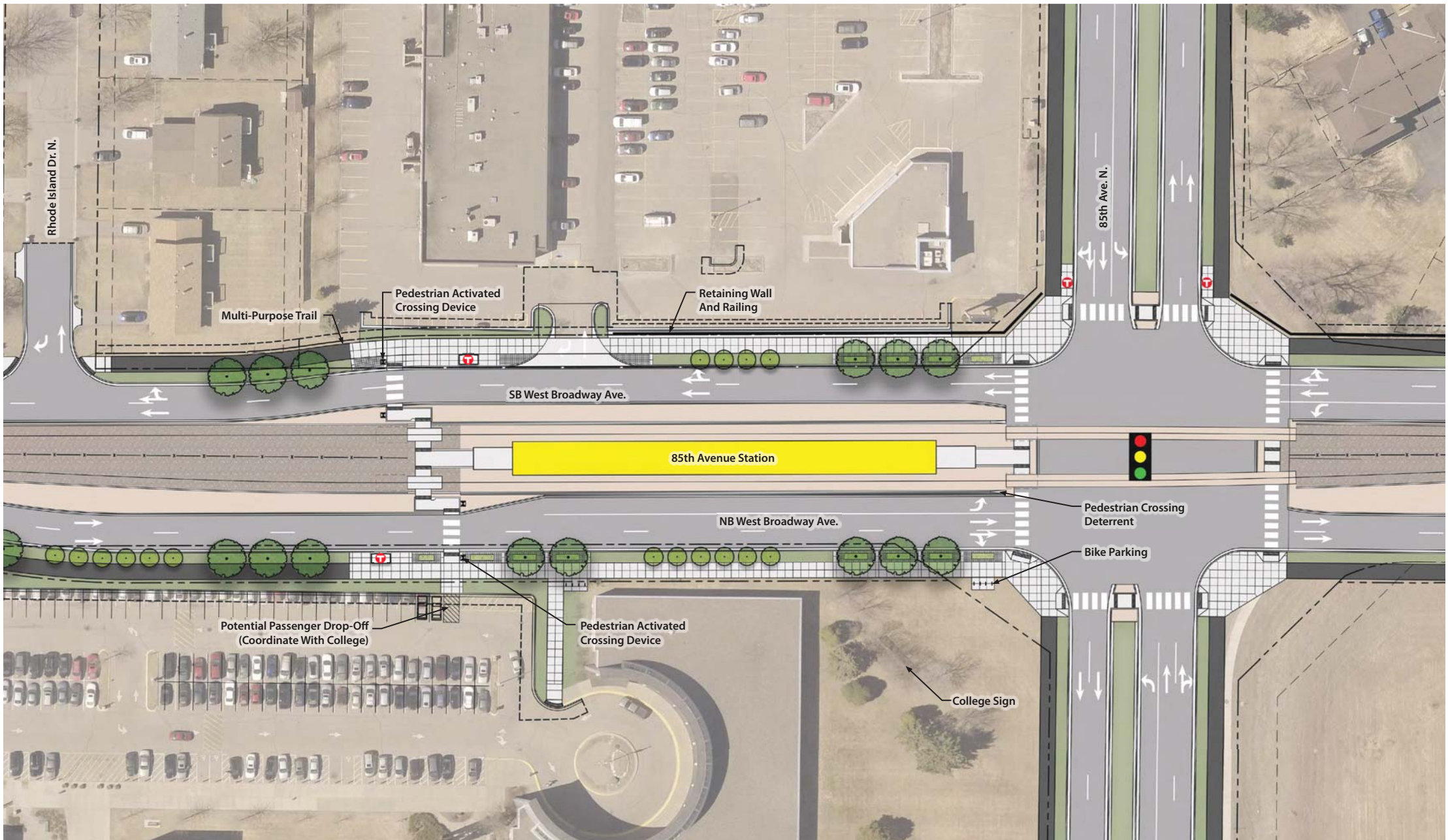
CONTEXT & CHARACTER WORKSHOPS

PRIDE FOR INSTITUTIONS
PARKING
BUS STOPS

ENTRANCE TO THE FUTURE
CIVIC SPACE
LOSS OF TREES
EDGES
CAMPUS
GENERATIONAL USE
CARPOOLS
LIBRARY
LEARNING
MODERN DESIGN
PEDESTRIAN FACILITIES

PLAZA
CORRIDOR
TRANSITION FROM PUBLIC TO PRIVATE
RESIDENTIAL UNEASINESS
DESTINATION
ARTS AND EDUCATION
STUDENTS
STATION BLENDS WITH MODERN ARCHITECTURE

STATION DESIGN CONCEPTS



Site Plan Note: The streetscape design for West Broadway Ave. is being developed in coordination with the Visioning Team with input from the City, County, and Community. Improvements shown on the station site plan do not imply that the LRT Project will provide them. Final determination of funding sources for the streetscape features is yet to be determined.



View from platform entry looking North



View from sidewalk looking Southeast

DRAFT
WORK IN PROCESS



Blue Line LRT Extension

BROOKLYN PARK 93RD AVE STATION DESIGN CONCEPTS



INNOVATION

NEW TRANSIT USERS
MORE TRAFFIC
INDUSTRIAL
COMMUTER TRAFFIC

CONNECTIONS NEEDED

BIKE FACILITIES
SIMPLE DESIGN
CAMPUS FEEL
PEDESTRIAN FRIENDLY
HOTEL POTENTIAL
UNIQUE BIOPHARMA
LIFESTYLE
MIXED USE
ROOF SPACE POTENTIAL
NEED PEDESTRIAN FACILITIES
PARKING IN NEIGHBORHOOD CONCERNS

CONTEXT & CHARACTER WORKSHOPS

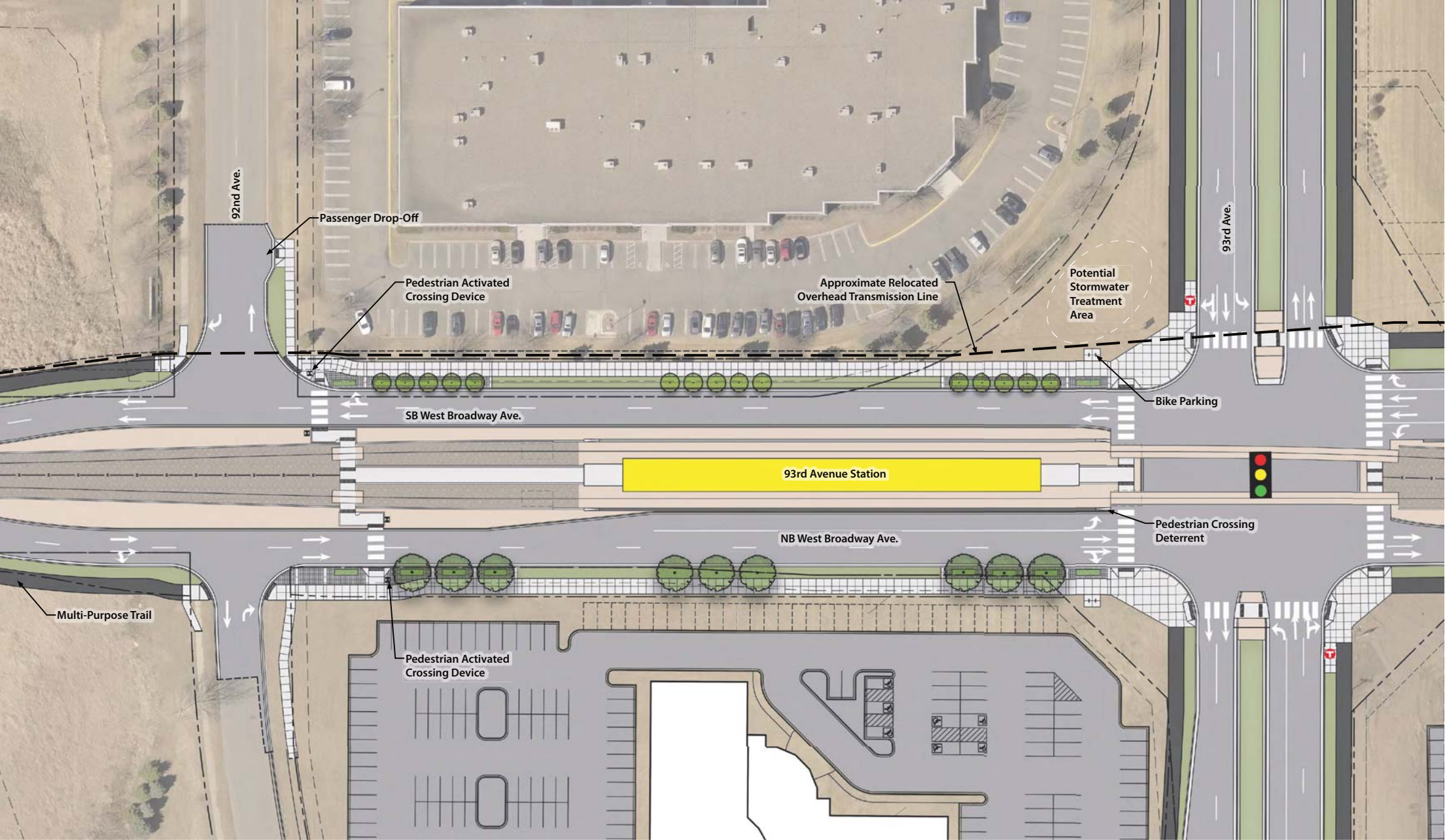
INNOVATION

NEW TRANSIT USERS
MORE TRAFFIC
INDUSTRIAL
COMMUTER TRAFFIC

CONNECTIONS NEEDED

BIKE FACILITIES
SIMPLE DESIGN
CAMPUS FEEL
PEDESTRIAN FRIENDLY
HOTEL POTENTIAL
UNIQUE BIOPHARMA
LIFESTYLE
MIXED USE
ROOF SPACE POTENTIAL
NEED PEDESTRIAN FACILITIES
PARKING IN NEIGHBORHOOD CONCERNS

STATION DESIGN CONCEPTS



Site Plan Note: The streetscape design for West Broadway Ave. is being developed in coordination with the Visioning Team with input from the City, County, and Community. Improvements shown on the station site plan do not imply that the LRT Project will provide them. Final determination of funding sources for the streetscape features is yet to be determined.



View from platform entry looking North



View from sidewalk looking Northwest

Blue Line LRT Extension

BROOKLYN PARK OAK GROVE PKWY STATION DESIGN CONCEPTS



WAYFINDING

WARM

STATION TO REPRESENT CULTURE

URBAN

CITY CENTER

PEOPLE CENTERED

GREEN

ENTRANCE POINT

MODERN

SPECIAL EVENTS AREA

NATIONAL EXAMPLE OF TOD

COMMUTER ACTIVE

MIXED USE DOWNTOWN

CENTER FOCUSED

CLEAR CONNECTIONS

"HUBURB"

HARD TO IMAGINE URBAN FUTURE

ENERGY

GRAND BOULEVARD

COMMUNITY HISTORY

EDUCATIONAL

INVESTING

FIELD

PARK LIKE

DEVELOPMENT

BEGINNING OF THE LINE

CONTEXT & CHARACTER WORKSHOPS

WAYFINDING

WARM

STATION TO REPRESENT CULTURE

URBAN

CITY CENTER

PEOPLE CENTERED

GREEN

ENTRANCE POINT

MODERN

SPECIAL EVENTS AREA

NATIONAL EXAMPLE OF TOD

COMMUTER ACTIVE

MIXED USE DOWNTOWN

CENTER FOCUSED

CLEAR CONNECTIONS

"HUBURB"

HARD TO IMAGINE URBAN FUTURE

ENERGY

GRAND BOULEVARD

COMMUNITY HISTORY

EDUCATIONAL

INVESTING

FIELD

PARK LIKE

DEVELOPMENT

BEGINNING OF THE LINE

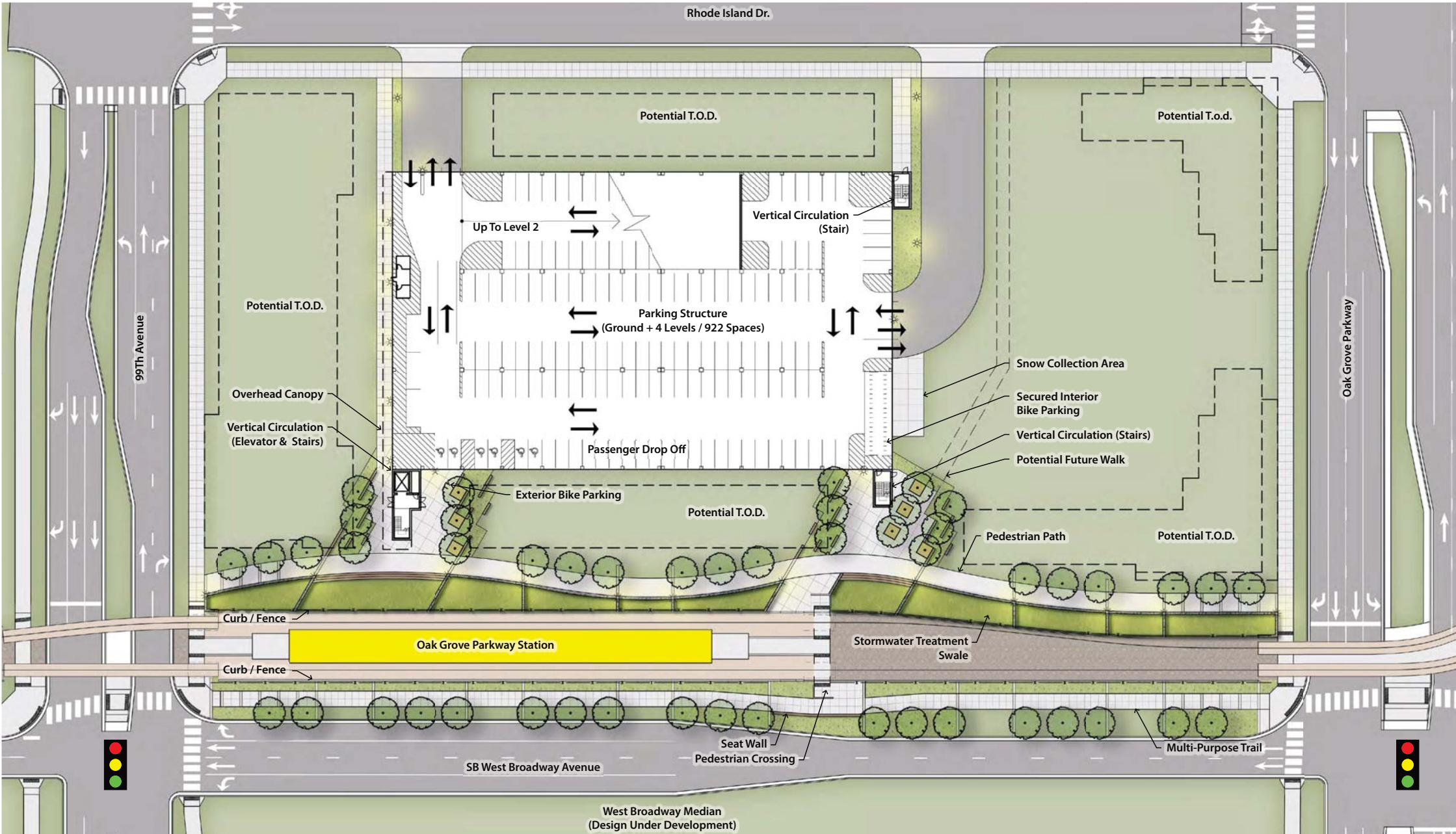
STATION DESIGN CONCEPTS



View from platform entry looking North



View of platform from entry looking Northwest



Site Plan Note: The streetscape design for West Broadway Ave. is being developed in coordination with the Visioning Team with input from the City, County, and Community. Improvements shown on the station site plan do not imply that the LRT Project will provide them. Final determination of funding sources for the streetscape features is yet to be determined.



Aerial view of Oak Grove Parkway Station and parking structure

DRAFT
WORK IN PROCESS

