

SOUTHWEST

Green Line LRT Extension



Joint Business and Community Advisory Committee Meeting

February 21, 2013





Today's Topics

- Transitional Station Area Action Plans
- Introduction of Community Outreach Coordinators
- Overview: SWLRT Preliminary Engineering Technical Issues and Decision-Making Process
- Workshop: Technical Issue #1: Eden Prairie Alignment
- Committee Member Reports
- Public Forum

SOUTHWEST

Green Line LRT Extension



Transitional Station Area Action Plans



SOUTHWEST

Green Line LRT Extension



Communications and Outreach Update



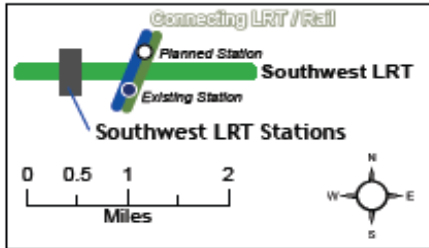
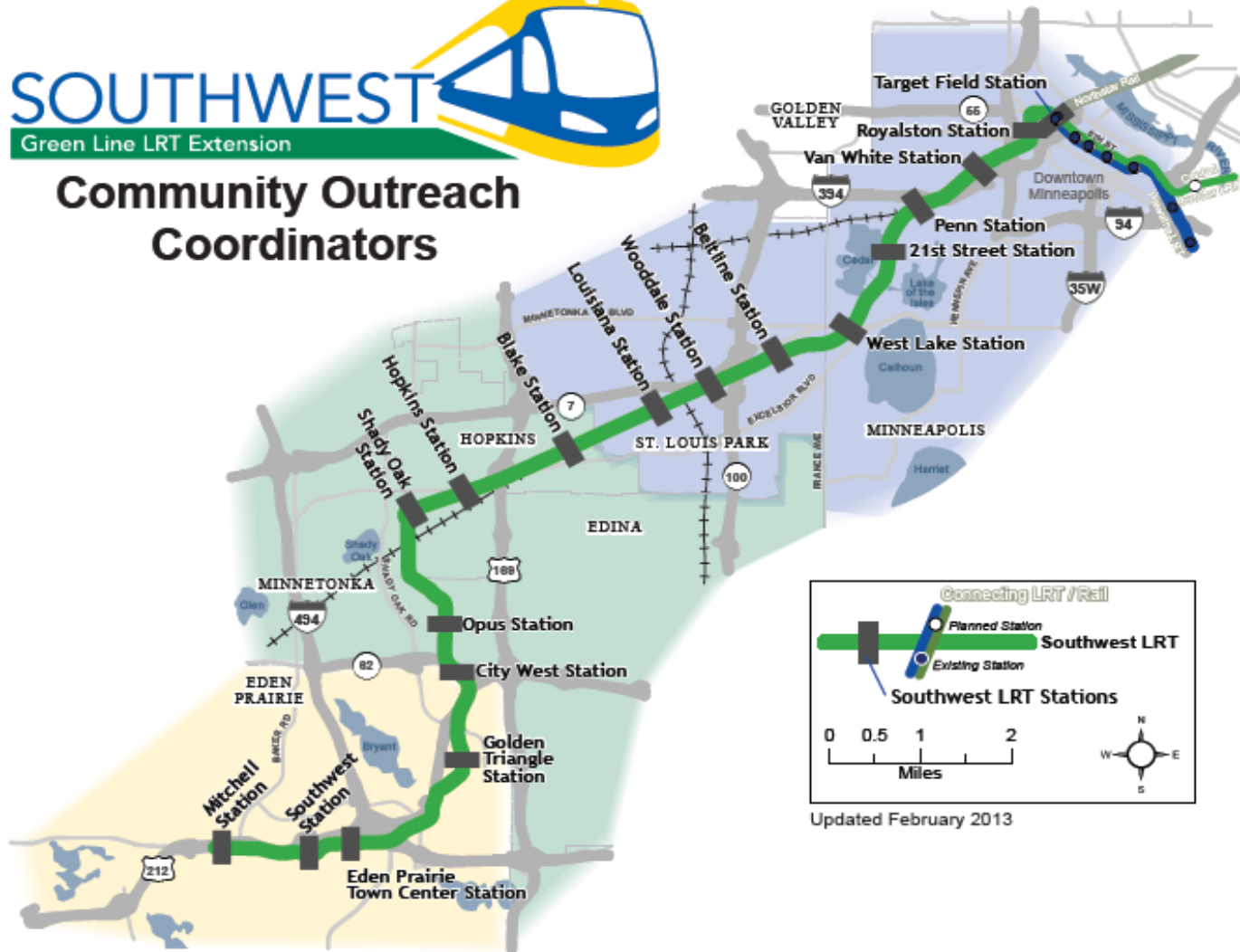


SOUTHWEST

Green Line LRT Extension



Community Outreach Coordinators



Updated February 2013

Eden Prairie

Stations: City West, Golden Triangle, Eden Prairie Town Center, Southwest, Mitchell

Minnetonka, Hopkins & Edina

Stations: Blake, Hopkins, Shady Oak, Opus

St. Louis Park & Minneapolis

Stations: Royalston, Van White, Penn, 21st St, West Lake, Beltline, Wooddale, Louisiana



SPO Community Outreach Coordinators

- Daren Nyquist: Eden Prairie
- Dan Pfeiffer: Minnetonka, Hopkins and Edina
- Sophia Ginis: St. Louis Park and Minneapolis



SPO Community Outreach Activities

Date	Event/Sponsor	SPO Activity
Jan 29	Shady Oak Road Open House/City of Eden Prairie	Staff shared project information
Jan 29	Tonka Progressives	SWLRT presentation given
Jan 29	Midtown Corridor Alternatives Analysis Open House/Metro Transit	Staff attended
Feb 05	Community Gathering: Cedar Lake Pkwy. Crossing/Public Works for Public Good	Staff participated
Feb 05	Creative CityMaking/City of Minneapolis	Staff attended
Feb 11	State of the Region/Metropolitan Council	Staff attended and shared project info
Feb 11	Southdale Y Service Club	SWLRT presentation given
Feb 14	Meet and Greet with Harrison Neighborhood Association	Staff participated and shared project info

SOUTHWEST

Green Line LRT Extension



PE Technical Issues / Issue Resolution Process





Preliminary Engineering

Scope of Work - 30% Engineering

Southwest LRT Project Office (SPO)

Preliminary Engineering Consultants

Independent Engineering
Peer Review

Civil/Track
Engineering

Utility
Relocation

Bridges &
Structures

Stations &
Streetscape

Systems
Engineering

Operations &
Maintenance
Facility

Project
Controls



SWLRT Technical Issues

- PEC West
- PEC East
- Joint PEC West/PEC East

Technical issues:

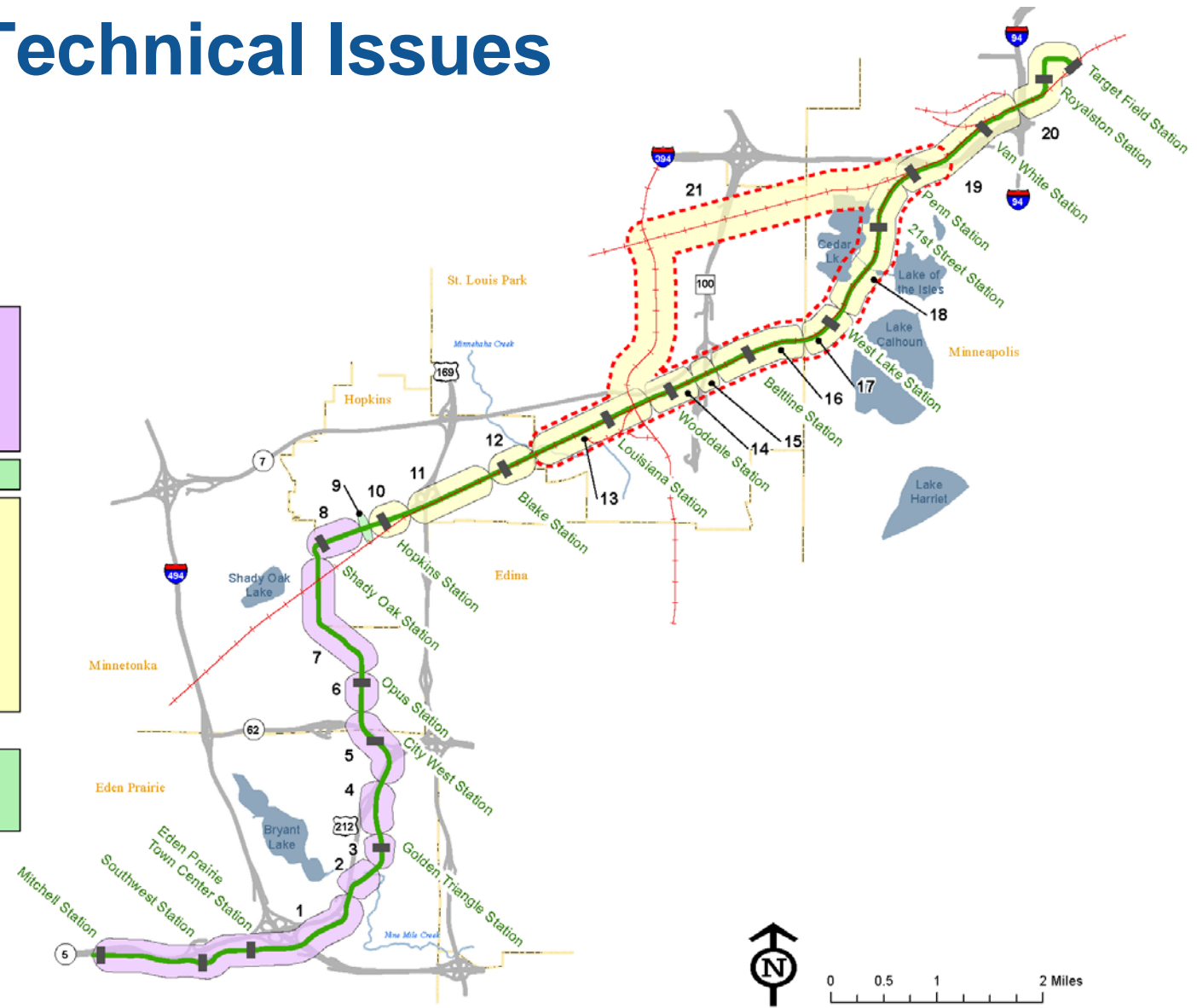
1. Eden Prairie Alignment
2. Nine Mile Creek Crossing
3. Golden Triangle Station
4. Shady Oak Road Crossing
5. City West Station and TH 212/TH 62 Flyover Bridges
6. Opus Station
7. Minnetonka/Hopkins Bridge
8. Shady Oak Station

9. PEC West/PEC East Interface Point

10. Hopkins Station
11. Excelsior Blvd. Crossing
12. Blake Station
13. Louisiana Station
14. Wooddale Station
15. TH 100
16. Beltline Station
17. West Lake Station
18. Kenilworth Corridor
19. Bassett Creek Valley Corridor
20. Royalston Station/Interchange Project Connection
21. Freight Rail Co-location/Relocation Alternatives

System-wide technical issues (not shown):

22. Traction Power Substation and Signal Bungalow Locations
23. OMF Location
24. Park & Ride, Kiss & Ride and Bus Layover Locations
25. Trails and LRT Interface Coordination





SWLRT PE Technical Issues: Define Project Elements

- Location of LRT track
- Location of freight rail track
- Location/layout of stations and station access
- Location/layout of park and ride facilities
- Location of pedestrian/bike trails impacted by project
- Layout of roadway features:
 - Turn lanes, lane widths, traffic signals
- Location/layout of OMF
- Identification of LRT systems elements



Draft SWLRT Scoping Principles

- Purpose
 - Establish a set of decision-making principles that are clear and transparent
 - Address concerns raised in the DEIS public comment process
 - Evaluate alternatives in a consistent manner

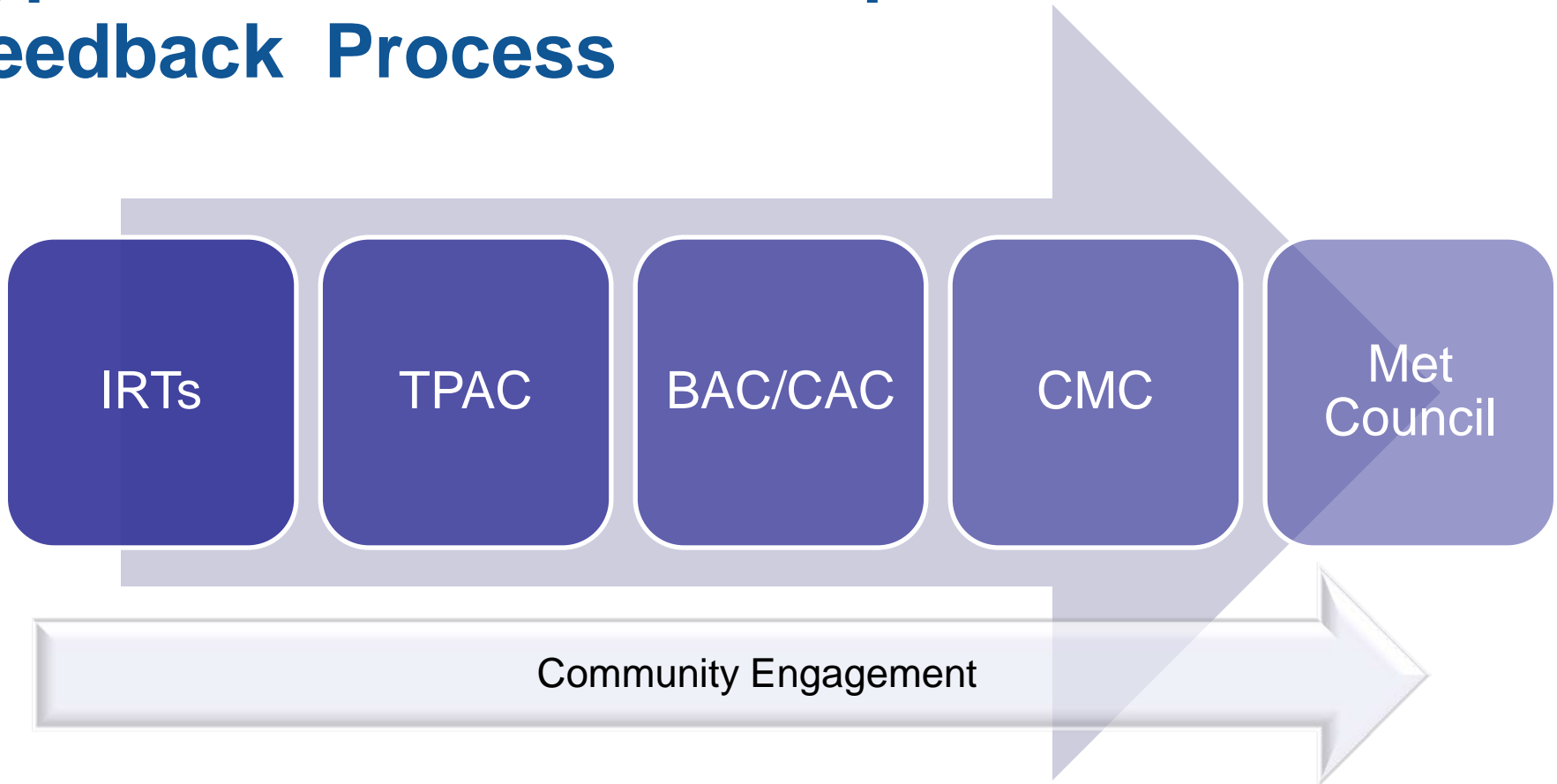


SWLRT PE Technical Issues: Issue Resolution Teams (IRTs)

- IRT Members
 - SPO Design & Engineering staff
 - SPO Environmental, Development and Outreach staff
 - PEC designers
 - Agency staff: Cities, MnDOT, County, Park Board, Watershed Districts, Freight Railroads
- IRT Meetings
 - Began in February



Typical Technical Issue Input / Feedback Process





A Look Ahead: Design & Engineering

- Q2/Q3 2013: Resolve Key Technical Issues
- Q3 2013: Submit Municipal Consent Plans for Agency Review
- Q4 2013: Complete Municipal Consent Approval Process
- Q1 2014: Finalize 30% Design Plans and Specs

SOUTHWEST

Green Line LRT Extension



Technical Issues Workshop: Eden Prairie Alignment





Workshop: Eden Prairie Alignment

- Comments by City of Eden Prairie Staff (5 minutes)
- Walk through alignment options (10 minutes)
- Share your thoughts/comments/input (15 minutes)
- Next Steps: Your feedback will be shared with the Corridor Management Committee on March 6



Your Comments/Thoughts/Feedback

- What key considerations should be included in identifying an alignment through Eden Prairie?
- What other key business and community stakeholders should be involved in the discussion?
- Other comments/feedback?



- Committee Member Reports
- Public Forum
- Adjourn
- Next Meeting Reminder:
 - BAC: Wednesday, March 27, 8:00 AM – 9:30 AM, Southwest Project Office
 - CAC: Thursday, March 28, 6:00 PM – 8:00 PM, Southwest Project Office



More Information

Online:

www.SWLRT.org

Email:

SWLRT@metrotransit.org

