

## 2021 Virtual Construction Tours

Take a video tour of construction activities in your city! View your city's video update: [Eden Prairie](#), [Hopkins](#), and [St. Louis Park](#). Minneapolis and Minnetonka videos will be released in future weeks. Also, join us for a virtual townhall to learn more about upcoming construction activities:

- [Eden Prairie Virtual Townhall](#): Monday, March 1 from 4:30 – 5:30 PM
- [Minnetonka Virtual Townhall](#): Friday, March 5 from 3:00 – 4:00 PM

Missed your city's update? [Townhall recordings are available on our website.](#)

## Weekly Construction Photo: Bridge Beam Placement for the Shady Oak Road LRT Bridge in Eden Prairie



Crews place beams for the Shady Oak Road LRT Bridge using cranes to lower the massive preformed spans. Crews continue work on the bridge deck and later this spring, they will also place the remaining beams over Highway 212 later this year.

**Eden Prairie Construction: Map 1 of 2**

## Eden Prairie - SW Station to Eden Road | Construction Activities from March - May 2021



### SouthWest Station to Eden Prairie Town Center Station

**Construction Overview:** At the SouthWest Station we are constructing a new park-and-ride ramp adjacent to the existing ramp and a combined bus and LRT station. Moving east, the Prairie Center Drive LRT Bridge extends from the SouthWest Station area over Technology Drive and Prairie Center Drive. Moving east, LRT will enter the Eden Prairie Town Center Station area.

#### Current activities to expect in this area:

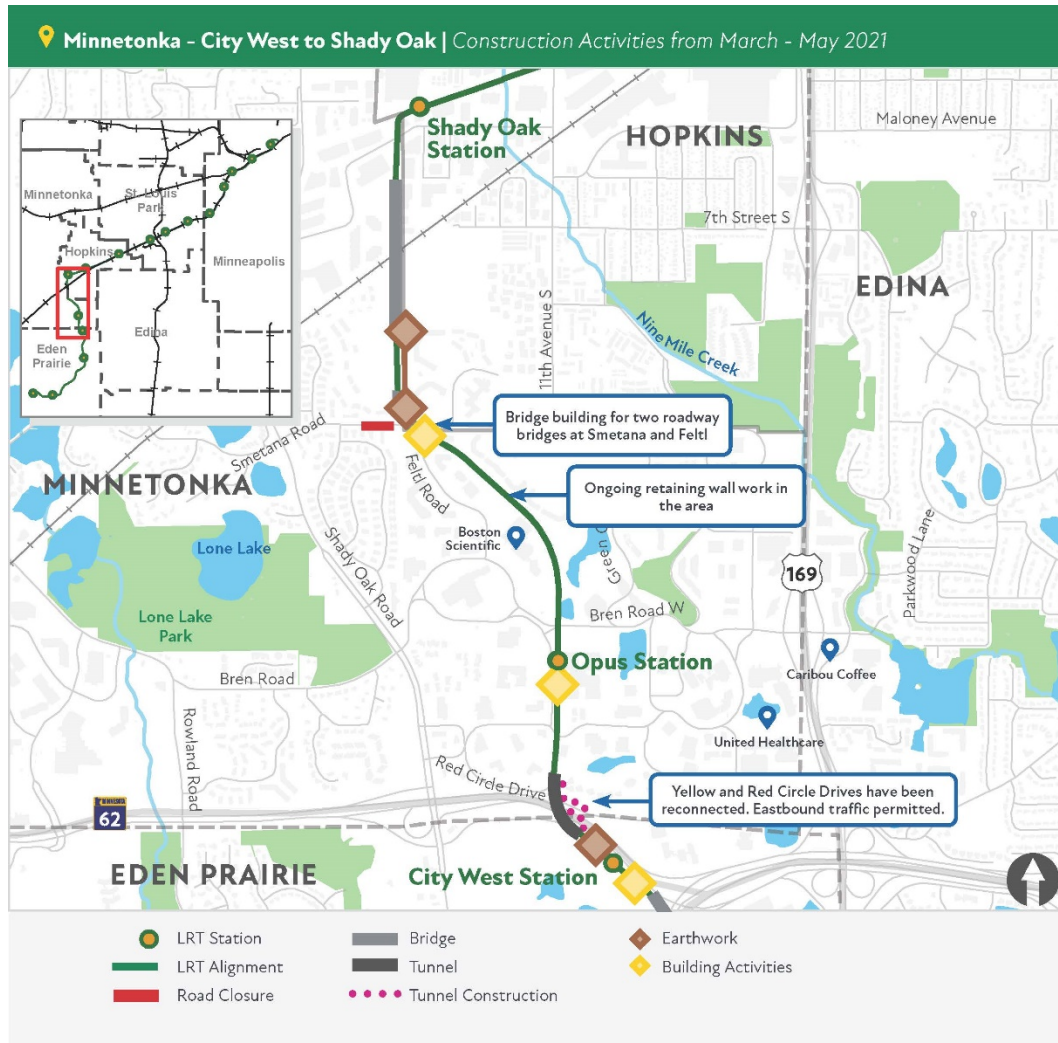
- The right-turn lane on the eastbound Highway 212 ramp to Prairie Center Drive remains closed.
- The SouthWest station area remains a busy construction site with ongoing piling and concrete work.
- Work continues on the Prairie Center Drive as crews work on bridge walkways.
- Sidewalks near the intersection of Prairie Center Drive and Technology Drive remain closed, please follow signage to ensure your safety. ([See the SouthWest pedestrian detour map](#)).



- Crews continue to advance the deck of the Nine Mile Creek bridge, expect construction activities in the area.
- Beam placement work for the Shady Oak Road LRT bridge is wrapping up, for this phase, during the week of March 1. Flying Cloud Drive will reopen once the cranes can be removed from the area. [See Eden Prairie detour maps here.](#)

## Minnetonka

### Minnetonka Construction: Map 1 of 1



### City West Station in Eden Prairie to Shady Oak Station in Hopkins

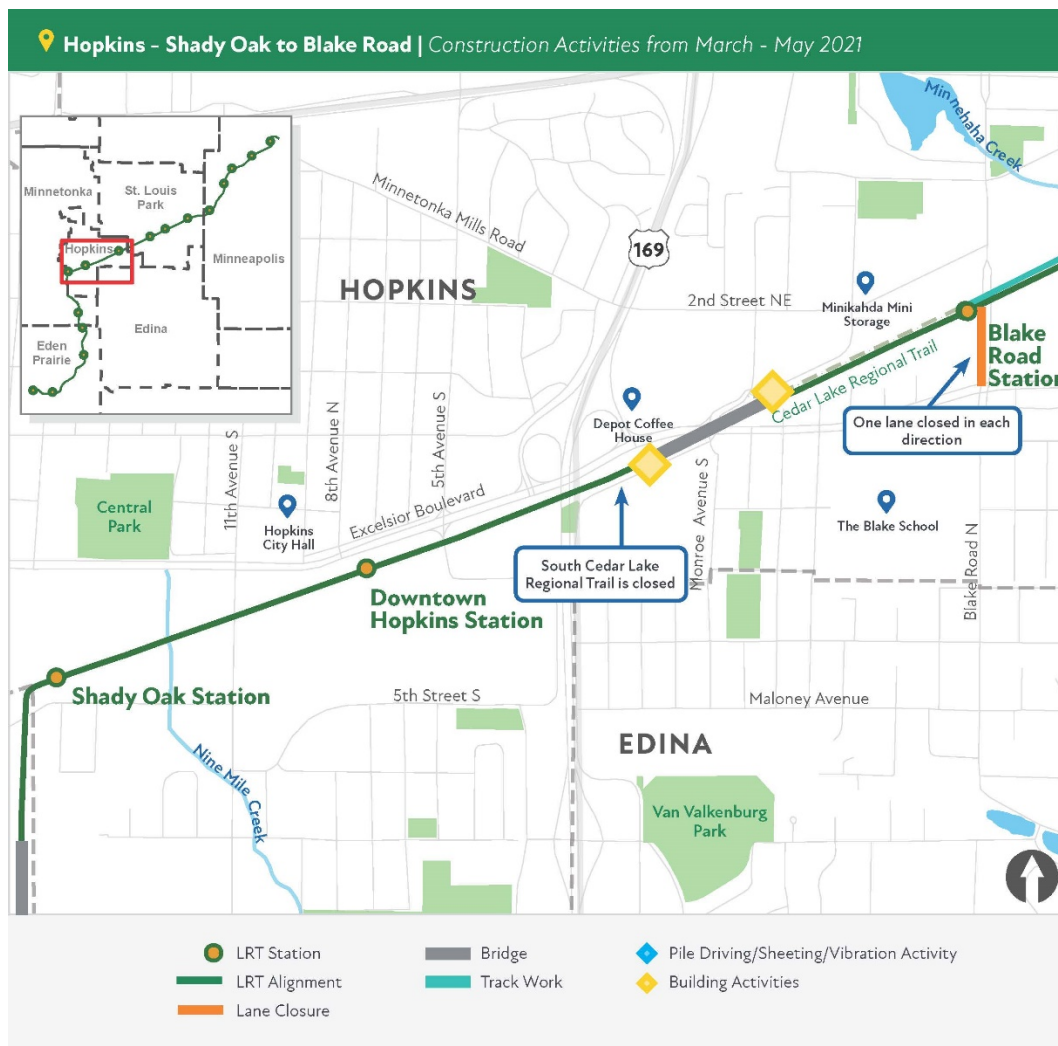
**Construction Overview:** The City West Station area continues with preparation work for retaining walls. Major elements in this segment include an LRT tunnel under Highway 62, the Opus Station, many large retaining walls, the Smetana/Feltl roadway bridges over LRT and the Hopkins/Minnetonka LRT Bridge ending at the Shady Oak Road Station.

Current activities to expect in this area:

- Smetana Road from Feltl Road to Nolan Drive remains closed. A temporary bypass is in place west of the intersection of Smetana and Feltl Roads to accommodate local traffic. [See Minnetonka detour maps here.](#)
- Work in the Opus area continues with retaining wall work north of Bren Road West, near Smetana Road.
- Crews are installing erosion control and fencing for the Minnetonka – Hopkins LRT bridge.

## Hopkins

### Hopkins Construction: Map 1 of 1



### Shady Oak Road Station to Blake Road Station

*Construction Overview:* There are three stations in Hopkins: Shady Oak Road, Downtown Hopkins and Blake Road. Major structures in Hopkins include an LRT bridge over Excelsior and a regional trail underpass at Blake

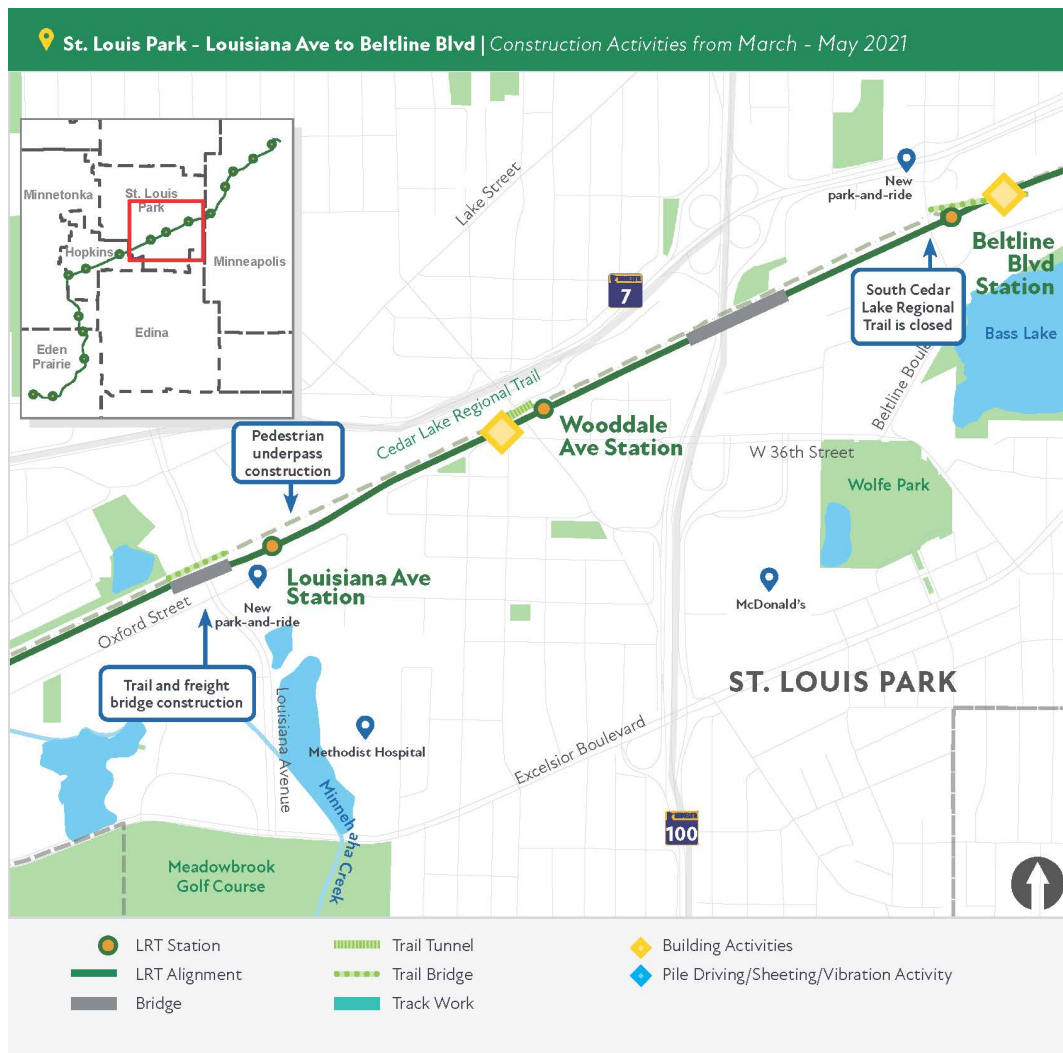
Road. In addition to LRT track construction there is also freight rail and regional trail work in the area. There are multiple LRT and freight railroad crossings at roadways.

*Current activities to expect in this area:*

- Crews continue work on Excelsior Boulevard LRT bridge pier tables.
- Blake Road continues to have a single lane in each direction.

## St. Louis Park

### St. Louis Park Construction: Map 1 of 1



### Louisiana Avenue to Beltline Boulevard

*Construction Overview:* Like in Hopkins, the project includes the construction of LRT track, freight rail track, and the regional trail. There are also three stations in St. Louis Park: Louisiana Avenue, Wooddale Avenue and

Beltline Boulevard. Structures in this area include LRT and freight rail bridges over Louisiana Avenue, a connection between freight lines, a pedestrian/trail underpass east of Louisiana Avenue, freight, LRT and trail bridges over Minnehaha Creek, a regional trail underpass at Wooddale Avenue, freight, LRT and trail bridges over Highway 100 and a regional trail bridge crossing over Beltline Boulevard.

*Current activities to expect in this area:*

- Crews continue construction of retaining walls near Wooddale Avenue.
- Crews are working on various elements of the Beltline Boulevard Regional Trail bridge. The bridge is mostly complete.

Minneapolis

**Minneapolis Construction: Map 1 of 5**



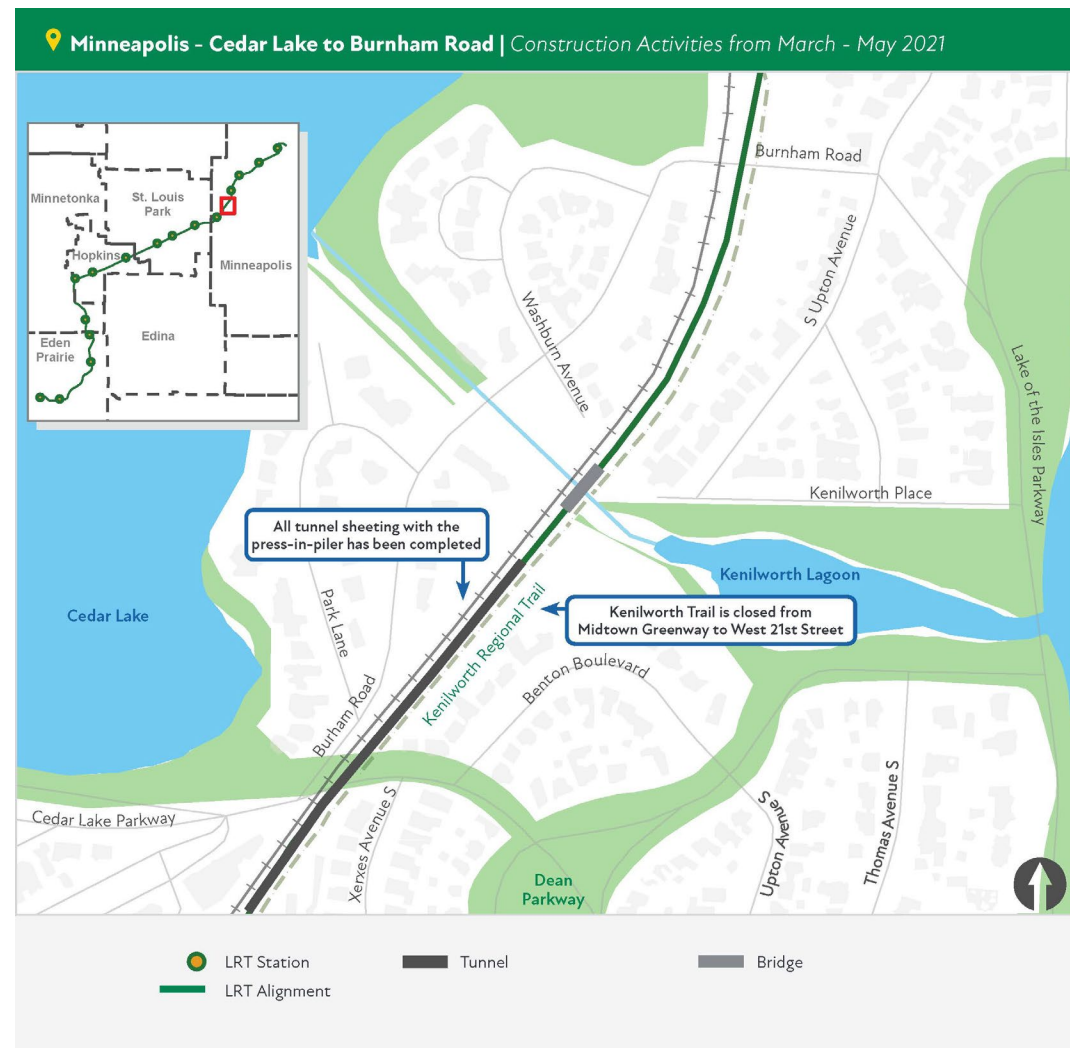
**Chowen Avenue to Cedar Lake Parkway**

**Construction Overview:** In addition to the West Lake Street Station, crews will be reconstructing the Chownen/Abbott roadway connection. The LRT tunnel is being constructed in this area, running between the West Lake Street Station and the Cedar Lake Channel. To complete work in this area there is also freight rail infrastructure and trail facilities.

**Current activities to expect in this area:**

- Temporary trails near Chownen Avenue and Lake Street remain in place. For your safety and the safety of our crews, please following signage for the temporary trail and stay clear of the work zone.
- Kenilworth tunnel excavation continues near Park Siding Park. The initial concrete pour to create a waterproof base slab is anticipated in March but an exact date has not yet been determined as work is dependent on the weather. To pour the first concrete seal, crews will need extended work hours until 9:00 PM as this work must be completed in a single day.

### Minneapolis Construction: Map 2 of 5





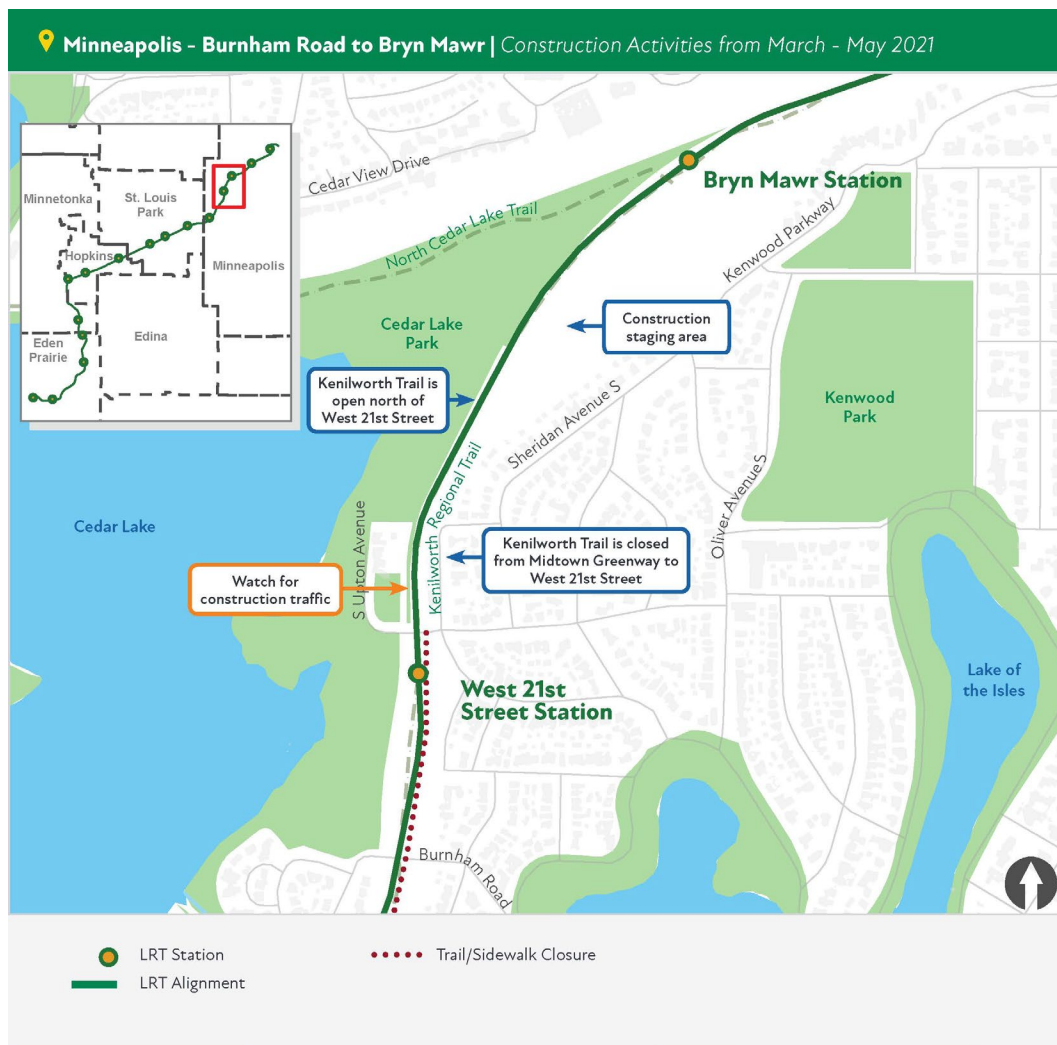
## Cedar Lake Parkway to Burnham Road

*Construction Overview:* The LRT tunnel continues in this segment. Other elements include the construction of retaining walls (complete), and freight, LRT and trail bridges over the Cedar Lake Channel.

*Current activities to expect in this area:*

- Truck traffic and noise from moving materials to and from laydown areas.
- Cedar Lake Channel bridge piling work to resume in the spring.

## Minneapolis Construction: Map 3 of 5



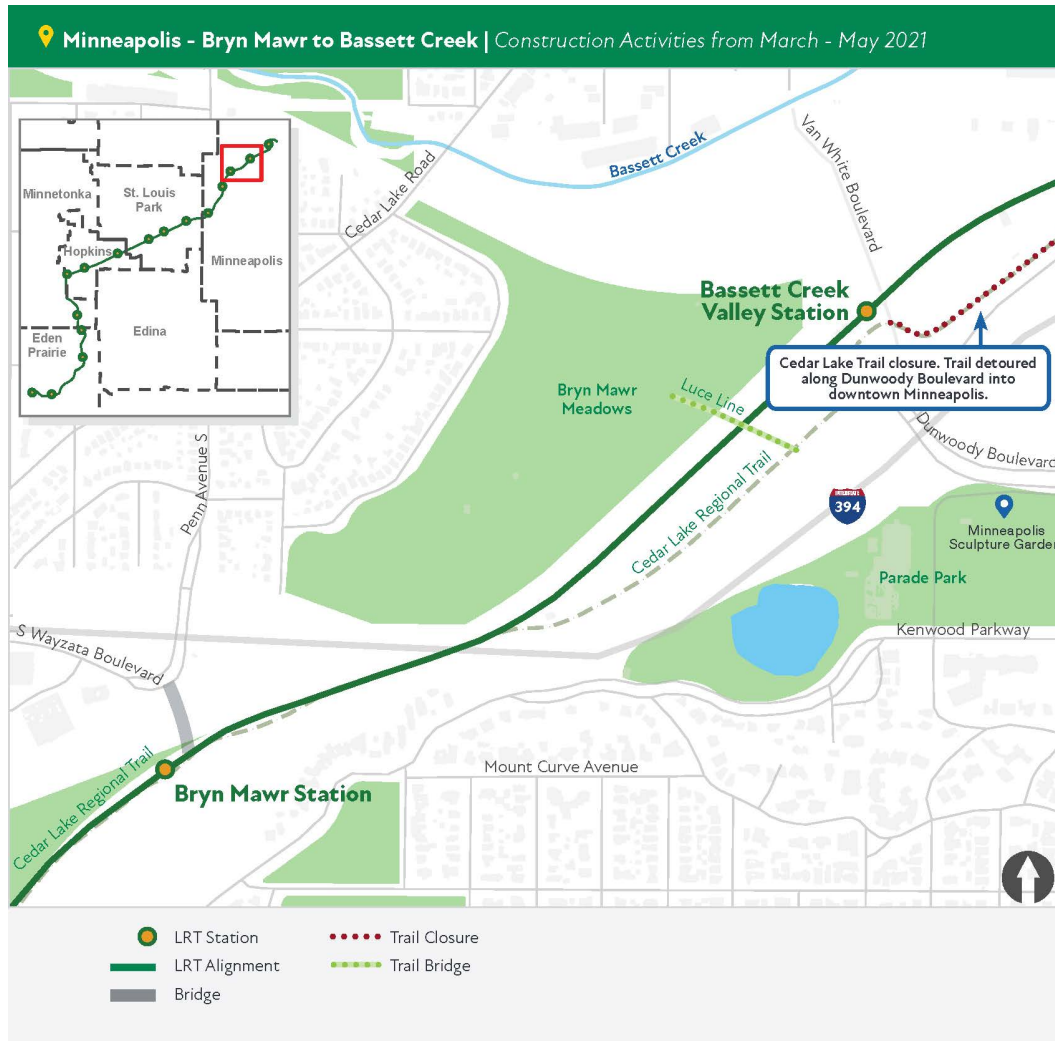
## Burnham Road to Bryn Mawr Station

*Construction Overview:* In addition to the LRT, freight rail and trail construction, this area has two stations: West 21<sup>st</sup> Street and Bryn Mawr. The Bryn Mawr Station includes a pedestrian bridge that will extend over the freight tracks from the bluffs to the station platform.

Current activities to expect in this area:

- Truck traffic and noise from moving materials to and from laydown areas.
- 21<sup>st</sup> Street Station work to resume in the spring.

### Minneapolis Construction: Map 4 of 5



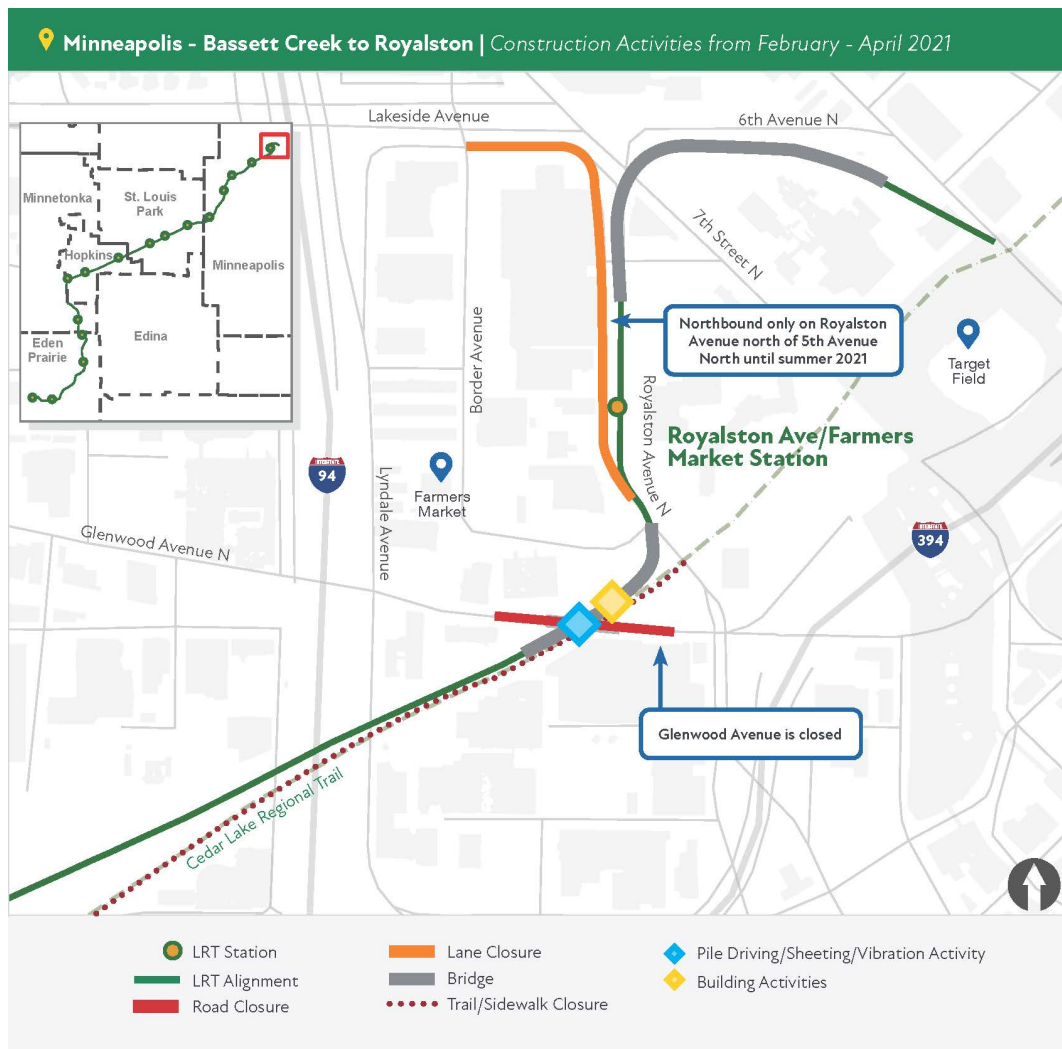
### Bryn Mawr Station to Bassett Creek Valley Station Area

**Construction Overview:** There are two stations serving residents in this area; Bryn Mawr Station and the Bassett Creek Valley Station. In addition, area construction includes LRT track, trails and the corridor protection wall.

Current activities to expect in this area:

- Truck traffic and noise from moving materials to and from Linden Yards.
- Concrete production in Linden Yards.

## Minneapolis Construction: Map 5 of 5



### Glenwood Avenue to Target Field Station

**Construction Overview:** LRT will cross a new Glenwood Avenue bridge at the roadway grade. To make that happen three bridges need to be constructed, freight rail shifted, and extensive retaining walls built. This area will see the development of the Royalston Avenue/Farmer’s Market Station, an LRT bridge crossing over North 5<sup>th</sup> Avenue and North 7<sup>th</sup> Street and LRT connecting to the Target Field Station. The Holden/Royalston/Border roadway loop will also be reconstructed with improvements.

#### Current activities to expect in this area:

- Construction activities to advance the LRT bridge at Glenwood Avenue will continue throughout the winter and into 2021, including pile driving.

- The continued closure of Glenwood Avenue between Lyndale Avenue North and North 12th Street. [See detour map here](#).
- The southbound travel lane on Royalston Avenue from North 5<sup>th</sup> Street to Holden Street is closed; the closure will be in place until summer 2021. Business access is available via the northbound lane. [See the roadway impact map here](#).

## **Regional Trails**

### **Minnesota River Bluffs Regional Trail**

The Minnesota River Bluffs Regional Trail in Hopkins is closed between Shady Oak Road and 5<sup>th</sup> Avenue South.

[See detour map here](#).

- The section between Shady Oak Road and 11th Avenue South is closed due to storm sewer construction activities. This portion of the trail is closed until 2022.
- The section between 11th Avenue South and 5th Avenue South is closed 2022.

### **South Cedar Lake LRT Trail**

The South Cedar Lake Trail from just east of the North Cedar Lake Trail connection in Hopkins to France Avenue in St. Louis Park is closed until 2022. The South Cedar Lake Trail will remain open between France Avenue in St. Louis Park and Kenilworth Trail/Midtown Greenway intersection in Minneapolis. The Midtown Greenway will remain open. Currently, cross streets remain open to automobiles, bikers and pedestrians. [See detour maps here](#).

### **Kenilworth Trail Closure**

The Kenilworth Trail is closed in Minneapolis at the intersection with the Midtown Greenway to just south of West 21<sup>st</sup> Street. We are currently assessing the tunnel schedule which impacts the opening of this trail segment and we will provide an update when the schedule is known. Access for automobiles, bikers and pedestrians remains open at Cedar Lake Parkway and at West 21<sup>st</sup> Street. [See detour map here](#).

### **North Cedar Lake Trail in Minneapolis**

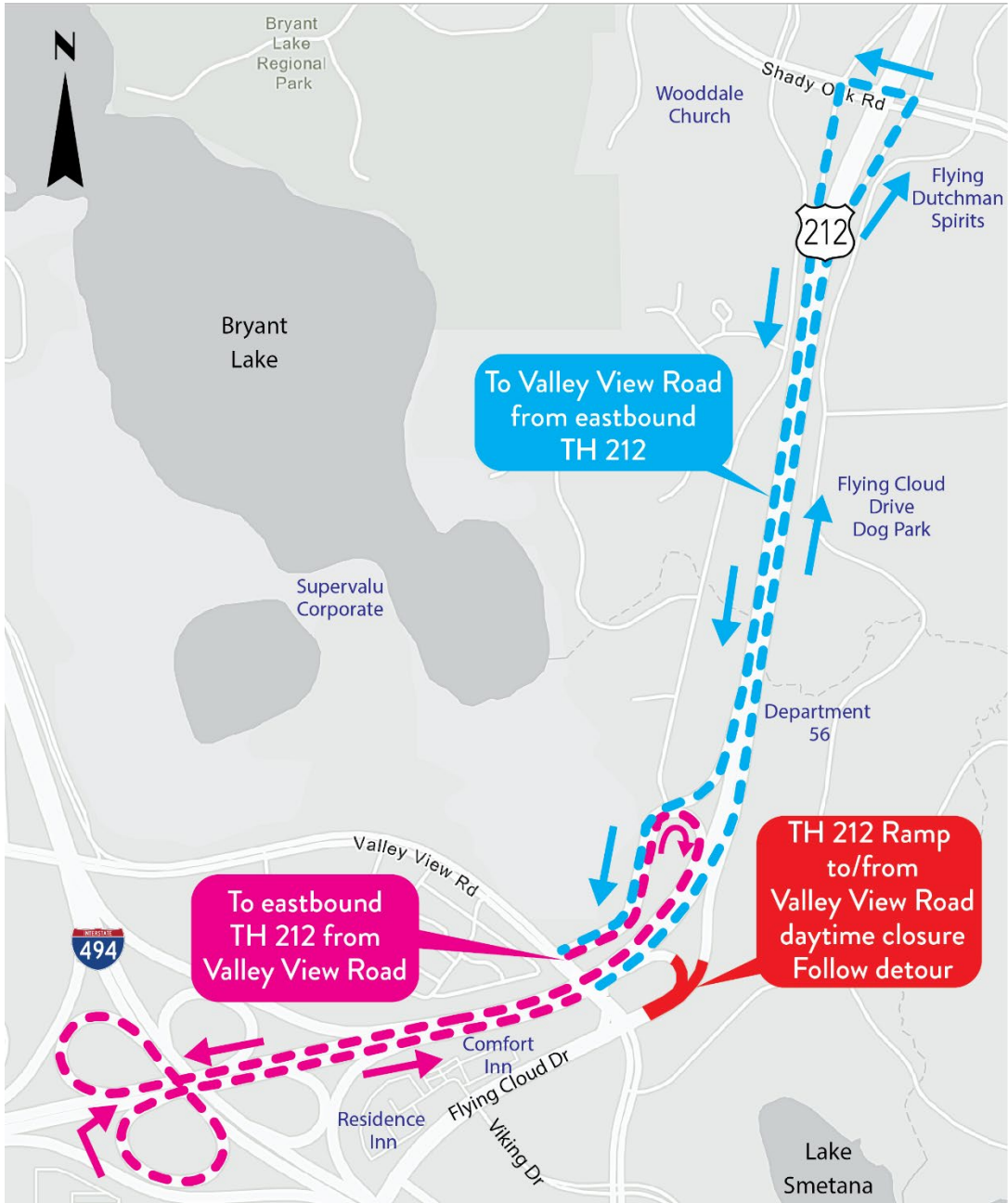
The North Cedar Lake Trail in Minneapolis from Linden Yards located west of Van White Boulevard to east of Royalston Avenue is now anticipated to be closed until 2022. [See detour maps here](#).

Please note, construction vehicles cross the trail as they enter and exit staging areas. Construction vehicles yield to trail users but please be aware that you may encounter construction traffic in this area.

### SouthWest Transit Station Pedestrian Detour in Eden Prairie



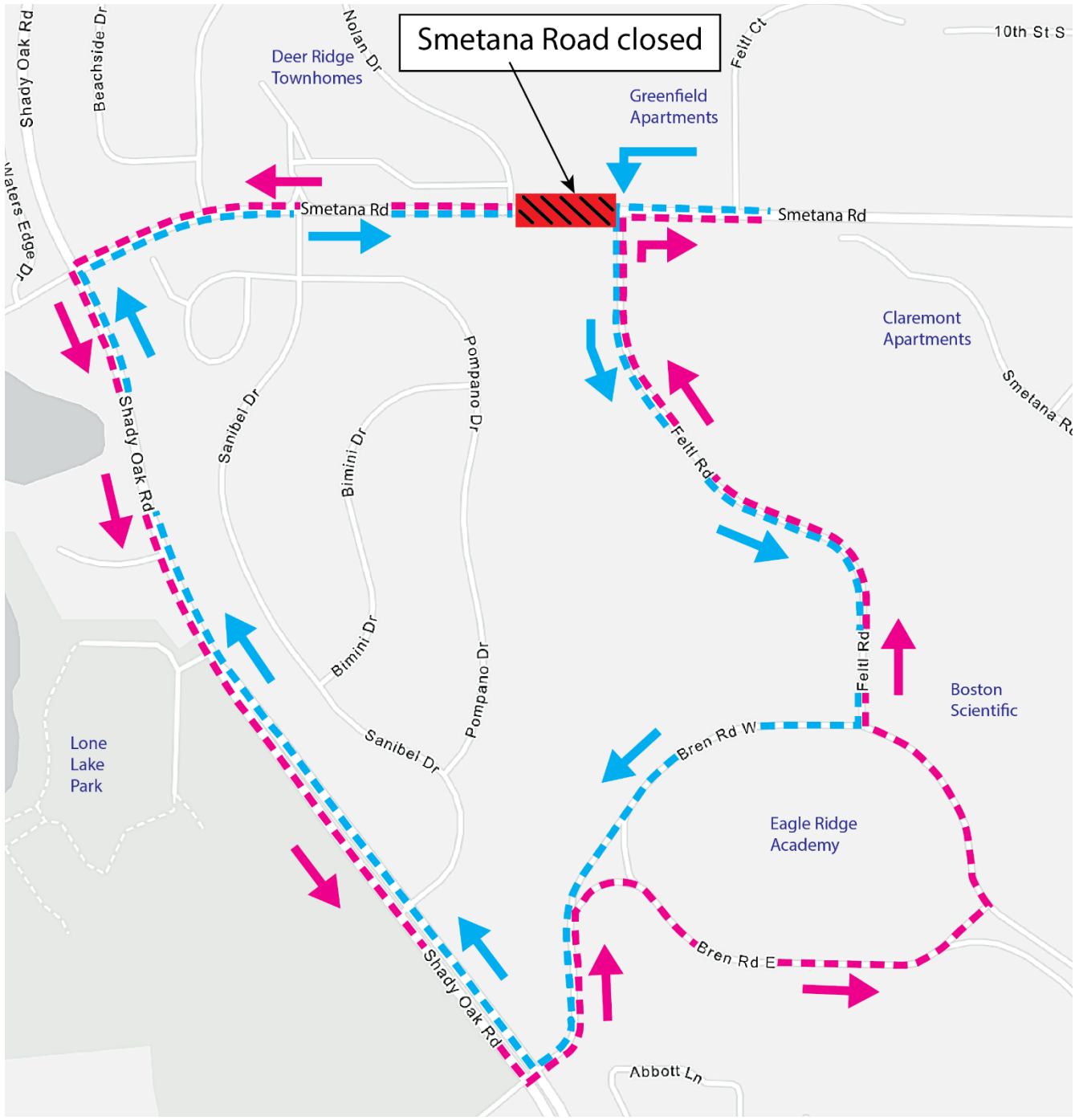
### Valley View Road to Eastbound Highway 212



### Opus Area Detours in Minnetonka: Red and Yellow Circles



### Smetana Road in Minnetonka

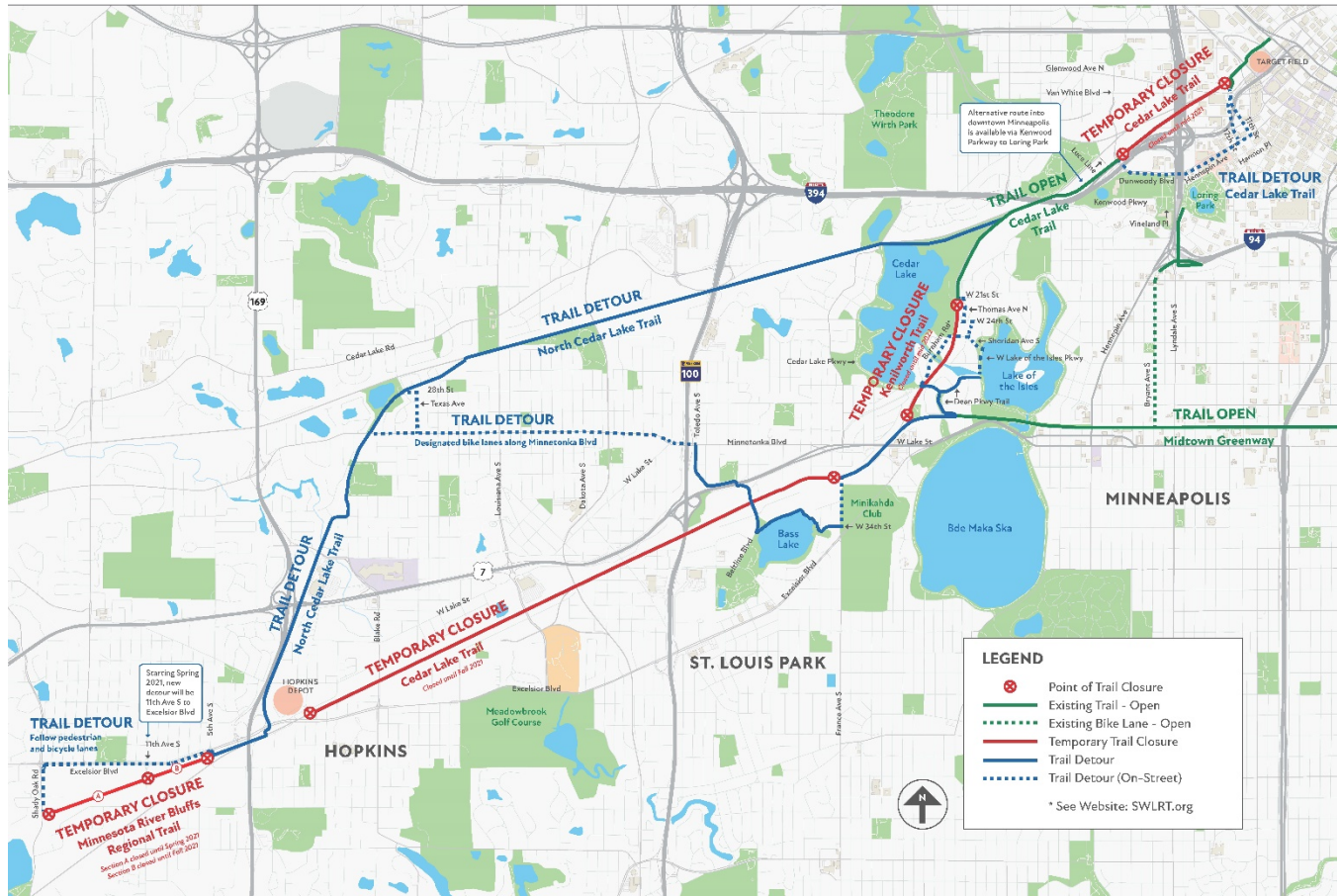






# TRAIL DETOUR

MORE DETAILS: [SWLRT.ORG](http://SWLRT.ORG)



## Cedar Lake Regional Trail in Minneapolis

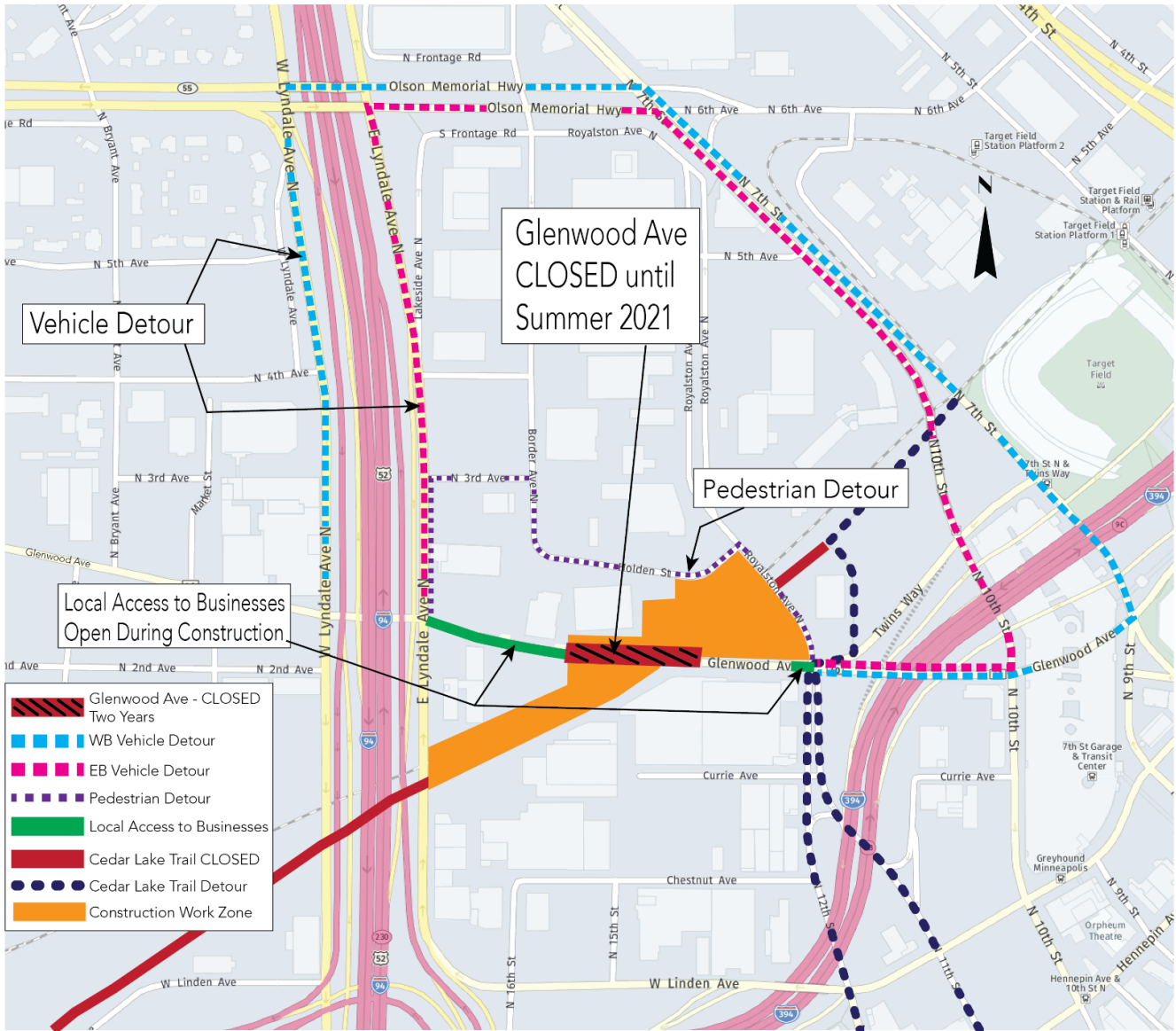
# CEDAR LAKE REGIONAL TRAIL

## TEMPORARY ALIGNMENT

MORE DETAILS: [SWLRT.ORG](http://SWLRT.ORG)



Glenwood Avenue Detour in Minneapolis



# Royalston Avenue Detour in Minneapolis

