

SOUTHWEST

Green Line LRT Extension



# Business Advisory Committee

January 27, 2016



# Today's Topics

- 2016 Look Ahead
- Section 4(f)
- Station and OMF Renderings
- Station Naming
- Corridor Housing Strategy Update
- Member and Committee Reports/Public Forum



# 2016 Look Ahead

# Major Project Milestones

Element	Timeframe
Complete 90% Civil Design	January 2016
Complete 100% Civil Design	April 2016
Final Environmental Impact Statement	April 2016
Record of Decision	June 2016
Entry Into Engineering	September 2016
Letters of No Prejudice (LONP) from FTA	Pre-FFGA
Anticipated Start of Prep for Civil Construction	Fall 2016
Anticipated Start of Systems Construction	Winter 2016/2017
Anticipated Start of OMF Construction	Spring 2017
Full Funding Grant Agreement	Mid 2017
Heavy Construction	2017-2019
Revenue Service	2020

# 2016 Activities: 60% to 100% Design

- LRT track features
- Bridges and tunnels
- Roadway and trail details
- Operations and Maintenance Facility features
- Park and ride facilities
- Systems elements
- Freight rail features
- Utility relocation design plans
- Station design plans
- Streetscape design plans

# January – June 2016 Look Ahead

Milestone	Date
Publish 4(f) <i>de minimus</i> Preliminary Determination	Jan 11, 2016
Complete 90% Design Packages for Civil	Jan 2016
LRV Proposals Due	Mar 2016
Complete 100% Design Packages for Civil	Apr 2016
FEIS	Apr 2016
Complete 90% Design Packages for OMF and Systems	May 2016
Record of Decision	June 2016

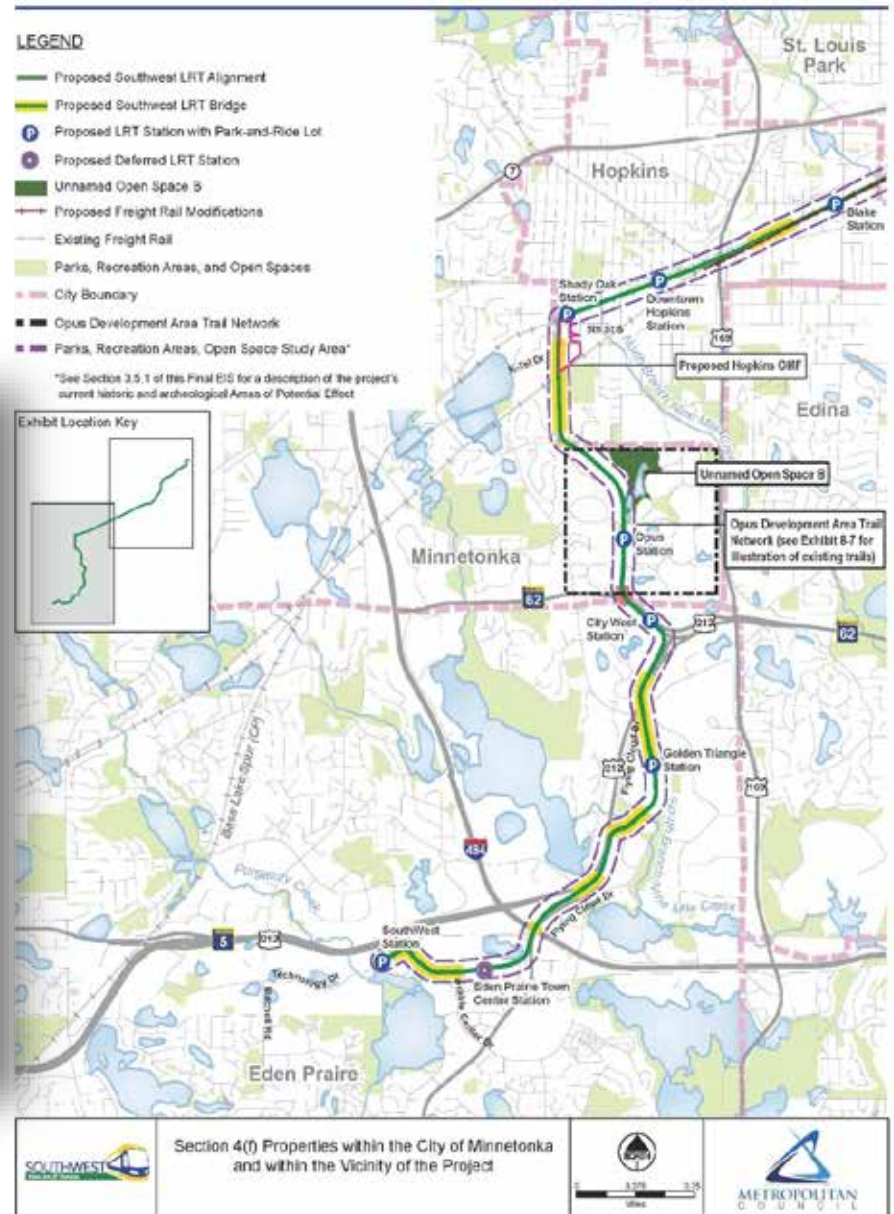
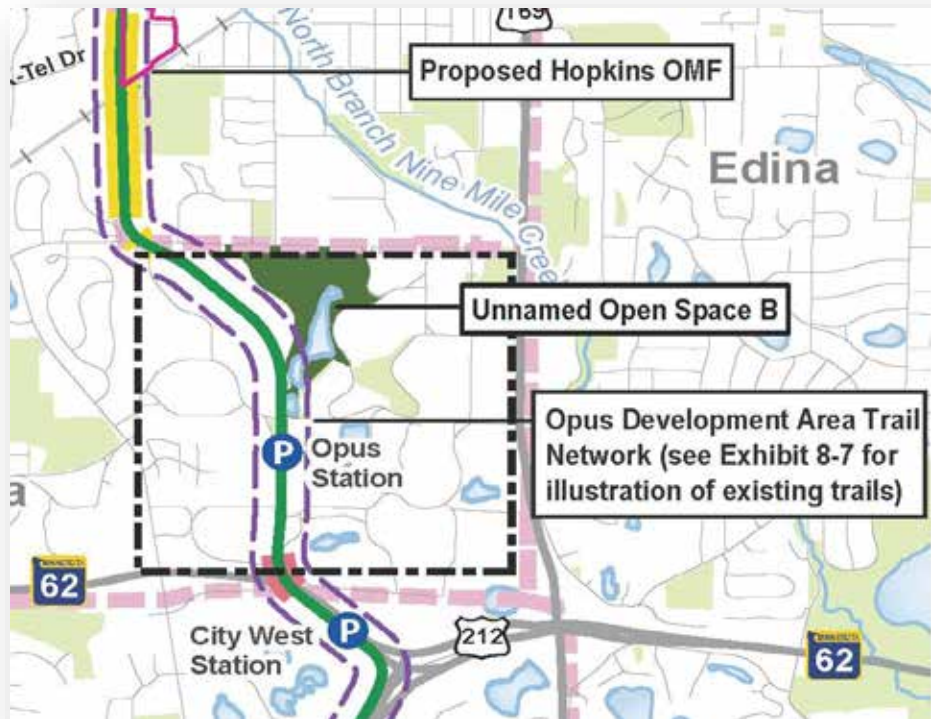
# Section 4(f) Update

# Amended Draft Section 4(f) Evaluation

- Two new Section 4(f) properties identified in the amended document
- Public can review document:
  - § City of Minnetonka, SPO
  - § Project website
  - § Select community/reference libraries
- 45 day comment period began January 11 and ends Feb 25



# Amended Draft Section 4(f) Evaluation



# Amended Draft Section 4(f) Evaluation

Section 4(f) Property	Non-de minimis Use	De minimis Impact	No Use	Existing Property Acreage	Acres Permanently Used	% of Property Used
Unnamed Open Space B		.		49.0	1.0	2.0%
Opus Development Area Trail Network		.		9.6	0.0*	0.0%*

\* Approximately 1.5 acres of the Opus development area trail network will be removed due to the Project and it will be replaced with approximately 1.8 acres of new trails with the same connections and functions, for a net increase of 0.3 acres of additional trail area within the Opus development area trail network.

# Station and OMF Renderings

# SouthWest Station

View From Technology Drive



*Draft – Work in Process*

# SouthWest Station

View From 212 Off-Ramp



*Draft – Work in Process*

# SouthWest Station

View From Technology Drive



# SouthWest Station

View From Bus Loop



*Draft – Work in Process*

# SouthWest Station



*Draft – Work in Process*



View From Bus/LRT Platform



# Golden Triangle Station

View From Park-and-Ride Looking North



*Draft - Work in Process*

# City West Station

View From Plaza Looking East



*Draft – Work in Process*

# Opus Station

View From Bren Rd E Looking South



*Draft – Work in Process*

# OMF Site Context: Neighborhood Site Plan



- LIGHT INDUSTRIAL
- COMMERCIAL
- RESIDENTIAL / CIVIC / EDUCATIONAL
- OPEN PARK SPACE / LANDFILL
- LAKES + STREAMS
- OMF BUILDING FOOTPRINT
- SWLRT STATIONS
- SWLRT EXTENSION
- EXISTING FREIGHT LINE
- EXISTING TRAILS
- 

DRAFT - WORK IN PROGRESS

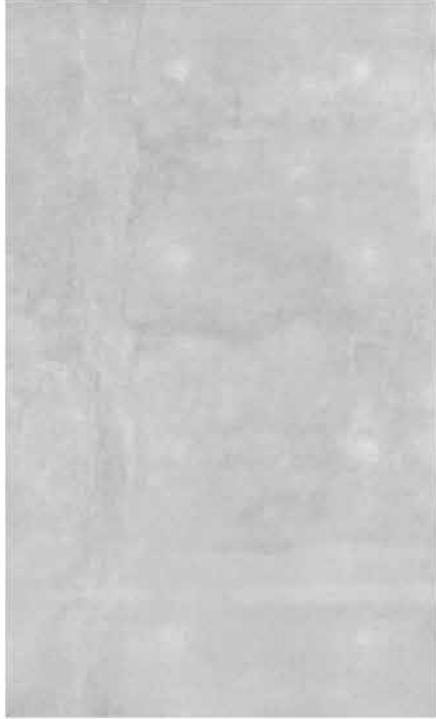
# Train Yard Concept: Site Plan



DRAFT - WORK IN PROGRESS

# OMF Palette: Building Materials

METRO TRANSIT / SAFETY YELLOW



PRECAST CONCRETE



BLACK ALUMINUM



POLYCARBONATE PANELS



GLASS

DRAFT - WORK IN PROGRESS

# Approach View From North



DRAFT - WORK IN PROGRESS

# Approach View From North Parking Lot





# OMF View From In-Service Train



DRAFT - WORK IN PROGRESS

EDEN PRAIRIE | MINNETONKA | EDINA | HOPKINS | ST. LOUIS PARK | MINNEAPOLIS



# OMF View From In-Service Train



DRAFT - WORK IN PROGRESS

**SOUTHWEST**  
Green Line LRT Extension



# West View From K-Tel Dr



DRAFT - WORK IN PROGRESS

EDEN PRAIRIE | MINNETONKA | EDINA | HOPKINS | ST. LOUIS PARK | MINNEAPOLIS



# West View From K-Tel Dr



# Shady Oak Station

View From Park-and-Ride Looking South



*Draft – Work in Process*

# Downtown Hopkins Station

View From Plaza Looking Southeast



*Draft – Work in Process*

# Blake Station

View From Blake Rd Looking Northwest



*Draft – Work in Process*

# Louisiana Station

View From Park-and-Ride Looking Northwest



*Draft – Work in Process*



# Wooddale Station

View From Wooddale Ave Looking Southeast



# Beltline Station

View From Walk Looking Northwest



*Draft – Work in Process*

# West Lake Station

View From Trail Looking North



*Draft – Work in Process*

# 21st Street Station

View From 21<sup>st</sup> St Looking West



*Draft – Work in Process*

# Penn Station

View From Trail Looking North



*Draft – Work in Process*

# Van White Station

View From Crosswalk Looking Northeast



*Draft – Work in Process*

# Royalston Station

View From Royalston Ave Looking Southeast



*Draft – Work in Process*

# Station Naming



# Background

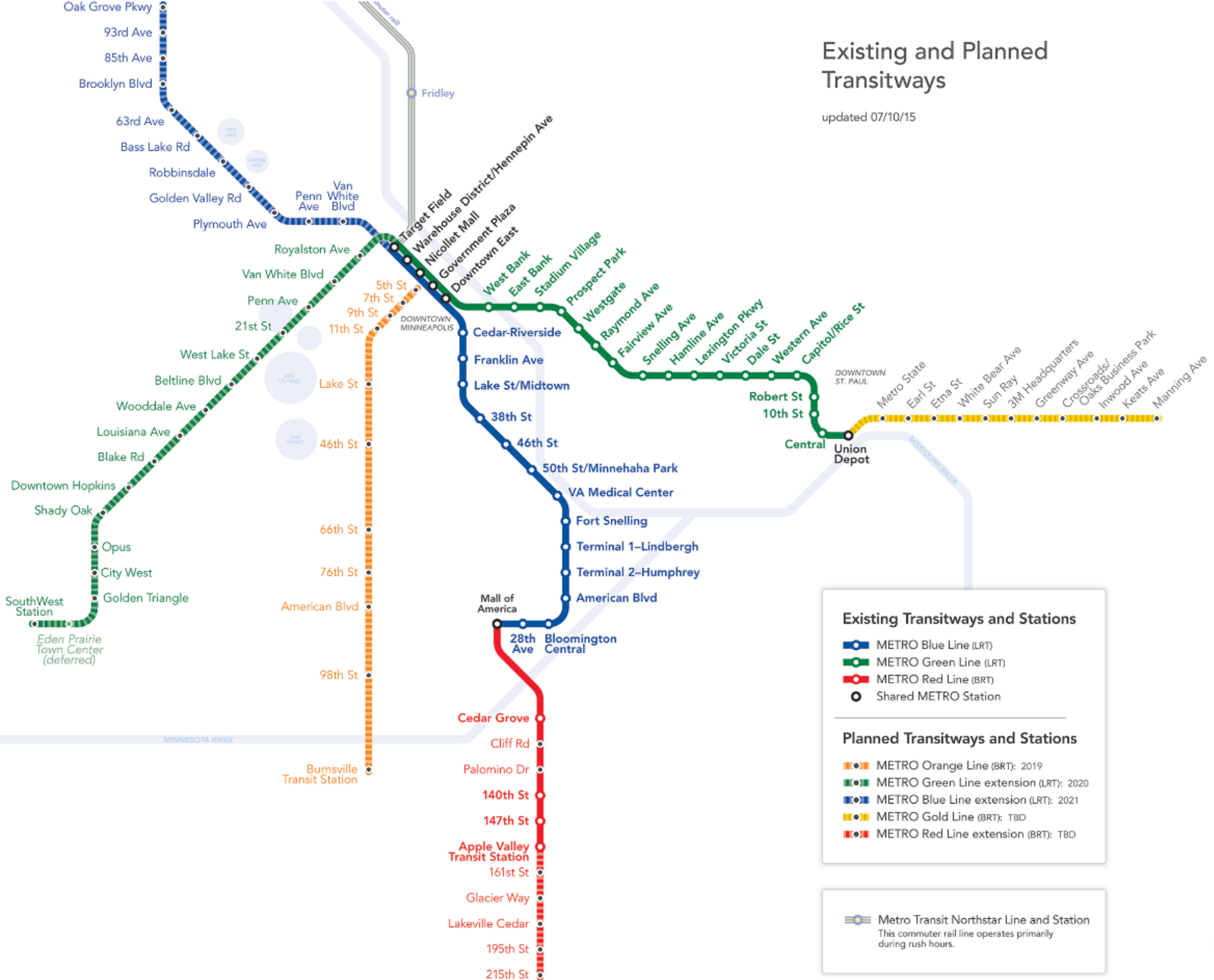
- Met Council's Transitway Guidelines provide guidance on station naming
- Green Line Extension and Blue Line Extension both include stations with the same name
  - § Van White
  - § Penn
- Station names need to be finalized prior and updated in the 100% design plans for inclusion in the Civil Construction bid documents

# Regional Transitway Guidance

- Reflect local geography: major cross-street or landmark
- Easy for general public to recognize, particularly potential transit customers who are not familiar with the region and/or the corridor
- Distinct from names of other stations to extent feasible so that the name does not create confusion for potential customers or emergency responders
- Succinct and use of two names for one station should be avoided

# Existing and Planned Transitways

updated 07/10/15



**Existing Transitways and Stations**

- METRO Blue Line (LRT)
- METRO Green Line (LRT)
- METRO Red Line (BRT)
- Shared METRO Station

---

**Planned Transitways and Stations**

- METRO Orange Line (BRT): 2019
- METRO Green Line extension (LRT): 2020
- METRO Blue Line extension (LRT): 2021
- METRO Gold Line (BRT): TBD
- METRO Red Line extension (BRT): TBD

**Metro Transit Northstar Line and Station**  
 This commuter rail line operates primarily during rush hours.

# Station Names Consistency with Guidelines

Station	Consistency with <i>Transitways Guidelines</i>
Royalston Ave	Consistent, major street
Van White Mem Blvd	Inconsistent, duplicate name with BLRT
Penn Ave	Inconsistent, duplicate name with BLRT
21 <sup>st</sup> St	Consistent, major street
West Lake Street	Consistent, major street
Beltline Blvd	Consistent, major street
Wooddale Ave	Consistent, major street
Louisiana Ave	Consistent, major street
Blake Rd	Consistent, major street
Downtown Hopkins	Consistent, major landmark of downtown Hopkins
Shady Oak	Inconsistent, 4 blocks away from street
Opus	Consistent, major landmark of business campus
City West	Inconsistent, not a recognized landmark
Golden Triangle	Consistent, landmark of business, Could be named after cross street
SouthWest Station	Consistent, major landmark of business campus, SWT station

# Timeline: Feedback and Council Action

Date	Committee
Jan 14	Technical Project Advisory Committee (TPAC) (complete)
Jan 14-31	Advanced Design Meetings (underway)
Jan 21	SWCW Steering Committee Feedback (complete)
Jan 26	Community Advisory Committee Feedback
Jan 27	Business Advisory Committee Feedback
Feb 3	Corridor Management Committee Recommendation
Feb 8	Transportation Committee Recommendation
Feb 24	Metropolitan Council Action

# Proposed Changes Presented to City Staff

Station	Proposed Name	Rationale
Van White	Van White Mem. Blvd	Duplicate with BLRT, keep Van White and add Mem Blvd
Penn	Bryn Mawr	Duplicate with BLRT, clarify location by referring nearest landmark, neighborhood
Shady Oak	17 <sup>th</sup> Ave	Clarify location by changing to extension of road that will go to park and ride
City West	West 62 <sup>nd</sup> St	Change to street to better describe location
Golden Triangle	West 70 <sup>th</sup> St	Change to street to better describe location

# Feedback From TPAC & City Staff

- Keep Golden Triangle Station because it's a known industrial and business park
- Change City West to “Crosstown” or “Hwy 62” because West 62<sup>nd</sup> St is only 2 blocks long in the station area

# Community Works Steering Cmte. Feedback

- Keep Golden Triangle Station because it's a known industrial and business park
- Keep Shady Oak because 17<sup>th</sup> Ave extension doesn't exist today and will be too new when the line opens
- Avoid duplicate names on SWLRT and Blue Line Extension in Minneapolis (Van White, Penn, Lake St.)
  - § Supports SWLRT Penn change to Bryn Mawr
- Choose simplicity, suggest dropping “Street”, “Boulevard”, etc.
- Changing “City West” to “62<sup>nd</sup> Street/Crosstown” acceptable
- Consider changing 21<sup>st</sup> St to Kenwood or Cedar Lake



# Next Steps

- Jan/Feb:
  - § Seek input from project advisory committees
- Feb:
  - § Make final recommendation to CMC and seek approval from Met Council
- March:
  - § Update design plans
- April/May:
  - § Complete a similar process for Blue Line Extension

# Southwest Community Works: Corridor Housing Strategy Update



# Southwest Corridor Housing Strategy

## Southwest LRT Business Advisory Committee

Kerri Pearce Ruch, Hennepin County  
January 27, 2016



# Southwest Community Works

**Vision:** Collaborate and partner so that Southwest Corridor becomes a **premier destination** that is **accessible, livable and vibrant**.

**Housing Goal:** Positioning the Southwest LRT communities as a place for all to live.

**Investment Principle:** Provide a full range of housing choices.

# Stakeholder Outreach

- **Developer and Funder Roundtables**
  - August 20, 2015
    - 15 housing developers and 8 funders participated.
- **Housing Advocate Roundtable** – September 8<sup>th</sup>
  - 8 housing advocates participated.
- **Community Advisory Committee** – August 25<sup>th</sup>
- **Business Advisory Committee** – August 26<sup>th</sup>
- **City Council study session presentations** – St. Louis Park (September), Hopkins (October), Edina (January)
- **City Authorities & Commissions** – Minnetonka (April), St. Louis Park (November)
- **Upcoming:** Met Council Community Development Committee (February)
- **Other outreach:** ULI Housing Committee, Hopkins Housing meeting sponsored by LISC and Blake Road Corridor Collaborative, Housing Collaborative Institute



# BAC feedback

Housing is not a conversation that happens between employers and employees; companies want to support employees and see LRT as an amenity.	➔	Refined language in Objective 1 about engaging corridor employers on workforce housing needs; added specific partners section with roles that include employers.
For-sale housing (condos, townhomes) is difficult to finance now due to litigation potential.	➔	Added language about removing barriers to higher-density home ownership opportunities.
Need a combination of policy and tools to support affordable housing.	➔	Refined language in Objective 3 – technical, financial and regulatory tools; added language about creative financing tools and seeking developers with specific expertise.
Need better understanding of how projects are financed, especially among policymakers – mixed used districts vs. buildings.	➔	Strengthened language around mixed-income (inclusionary housing) policies in Objective 1; added language about creative financing tools and seeking developers with specific expertise.
Senior housing development is critical.	➔	Added specific language to Housing Goal and Affordability Target section and Next Steps section on senior housing.
Focus on retention of affordable housing.	➔	Strengthened language in Objective 2 – preservation.

# How this Strategy may be used:

- Encourage integration of tools in zoning, development plan review and funding allocation decisions.
- Incorporate the Corridor Housing Strategy in development or updates to housing policies and comprehensive plans.
- Determine mix of unit types and affordability.
- Seek city goals for preservation and new construction at various affordability levels for each station area, to apply to corridor targets.



*LISC Corridor Development Initiative (CDI) workshops*

# Next Steps

Seek city/county support for the Corridor Housing Strategy  
Q1 – Q2 2016

Develop a work plan to move implementation strategies forward.  
Q1 – Q2 2016

Track progress on corridor-wide strategy implementation.  
2016 – on-going

Engage regularly with policymakers and stakeholders  
On-going



- Member and Committee Reports/Public Forum
- Next Meeting:
  - § Wednesday, Feb. 24

# More Information

Online:

[www.SWLRT.org](http://www.SWLRT.org)

Email:

[SWLRT@metrotransit.org](mailto:SWLRT@metrotransit.org)

Twitter:

[www.twitter.com/southwestlrt](http://www.twitter.com/southwestlrt)

