



**Metropolitan Council, Hennepin County and
Hennepin County Regional Railroad Authority
Joint Public Hearing on
Municipal Consent**

January 19, 2016



Agenda

- 5:00 PM: Open House
 - § Opportunity for the public to ask questions of project staff
- 6:00 PM: Public Hearing
 - § Welcome and brief project overview
 - § Opportunity for the public to comment on plans



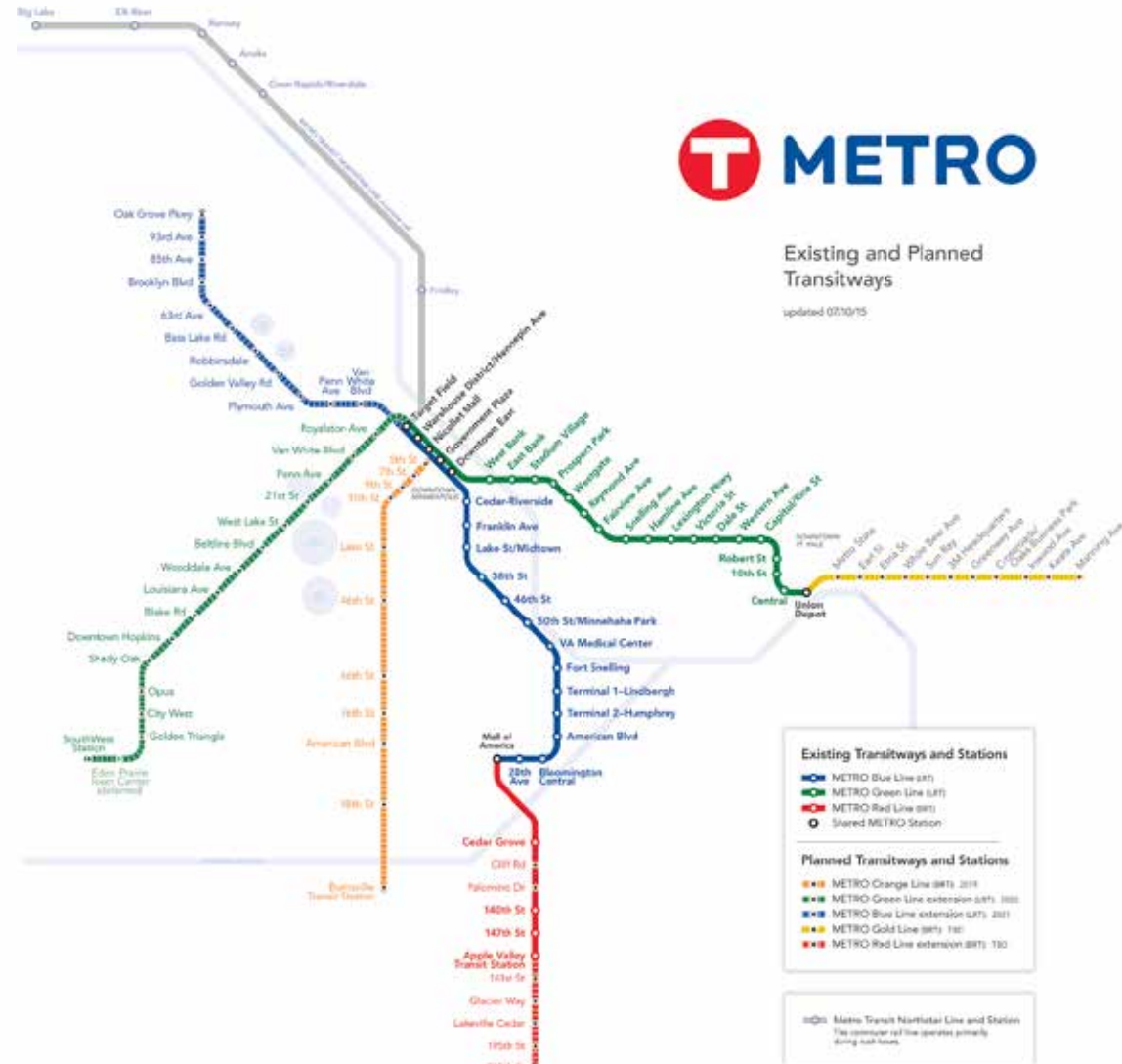
Purpose of Today's Municipal Consent Public Hearing

- Provide stakeholders an opportunity to comment to the Metropolitan Council, Hennepin County and Hennepin County Regional Railroad Authority on Municipal Consent plans



METRO System: All-Day, Frequent Service

- Light Rail Transit
 - § Blue Line (2004)
 - § Green Line (2014)
 - § Green Line Extension (2020)
 - § Blue Line Extension (2021)
- Bus Rapid Transit
 - § Red Line (2013)
 - § Orange Line (2019)
 - § Gold Line (TBD)

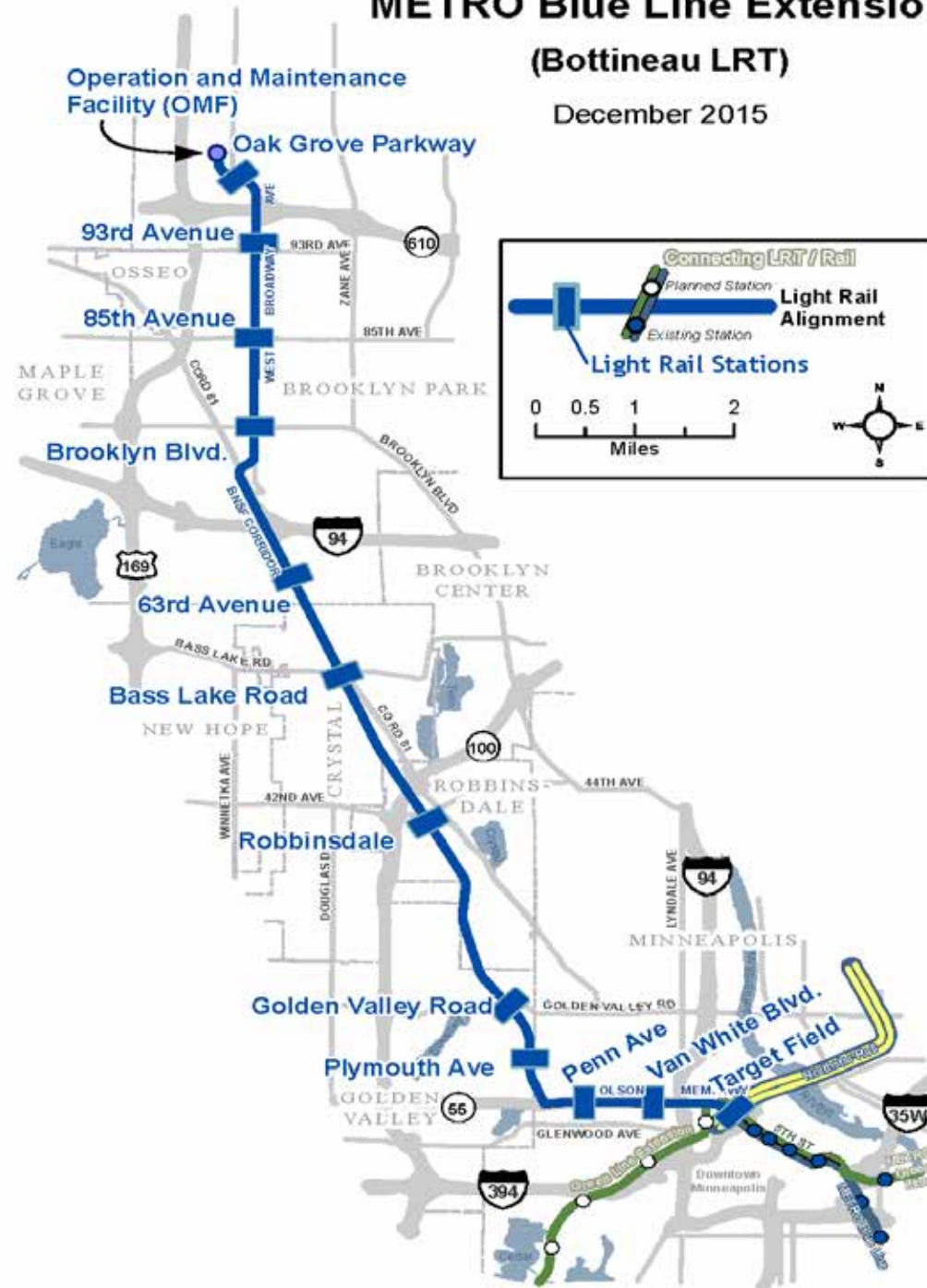


Project Overview

- 11 new LRT stations
- 13.5 miles of double track
- 27,000 est. rides by 2040
- Serving Brooklyn Park, Crystal, Robbinsdale, Golden Valley & Minneapolis
- One seat ride from Brooklyn Park to Bloomington
- New Starts Status: Project Development

METRO Blue Line Extension (Bottineau LRT)

December 2015



Municipal Consent Process

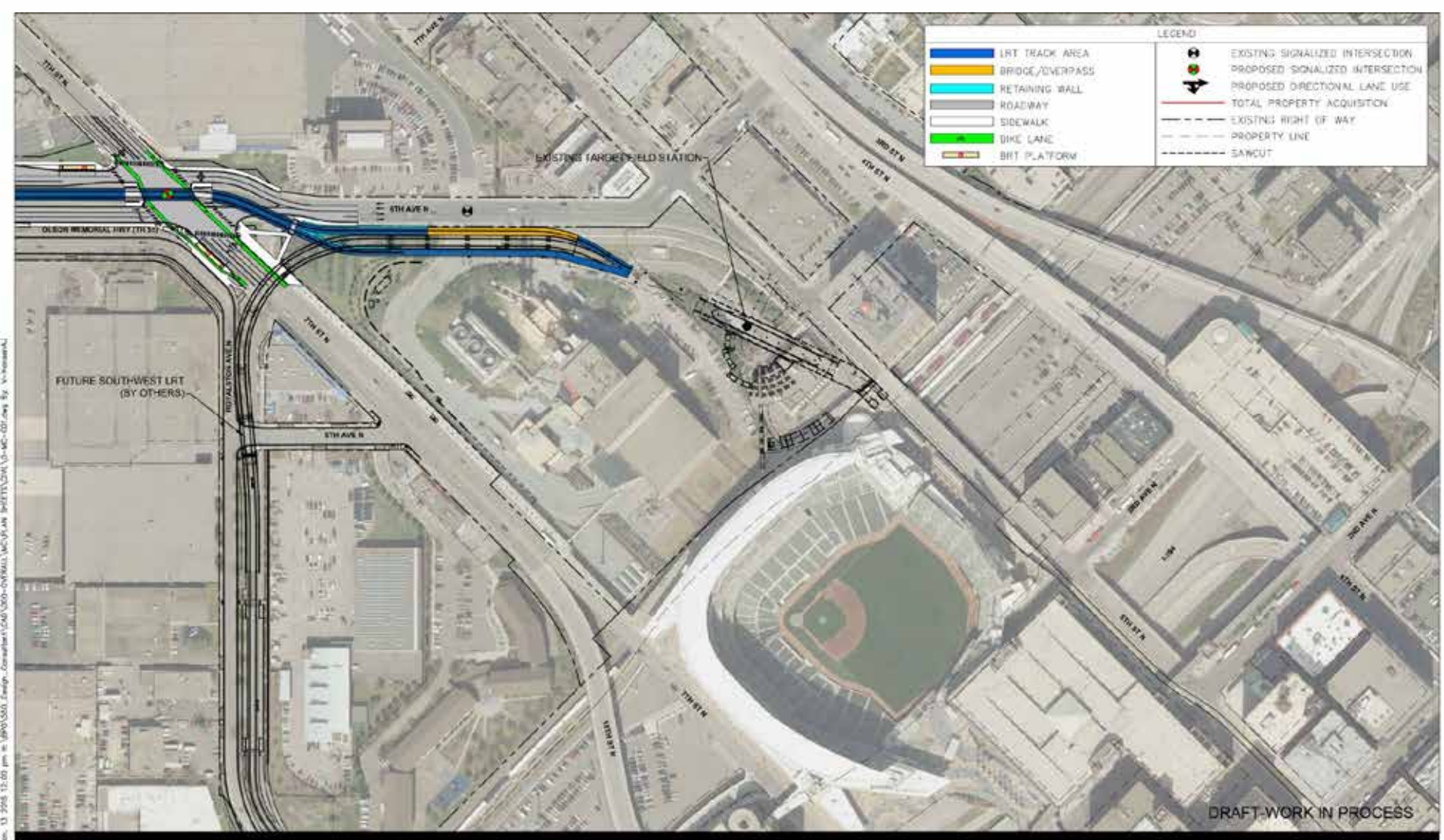
- Minnesota Statute 473.3994
- Local jurisdictional review and approval of physical design component of preliminary design plans



Physical Design Components

- LRT track location
- Station location and layout
- Roadway features
 - § Turn lanes
 - § Lane widths
 - § Traffic signals
- Sidewalks
- Pedestrian crossings
- Operations and Maintenance Facility (OMF) location
- Freight track location
- System elements





Kimley»Horn

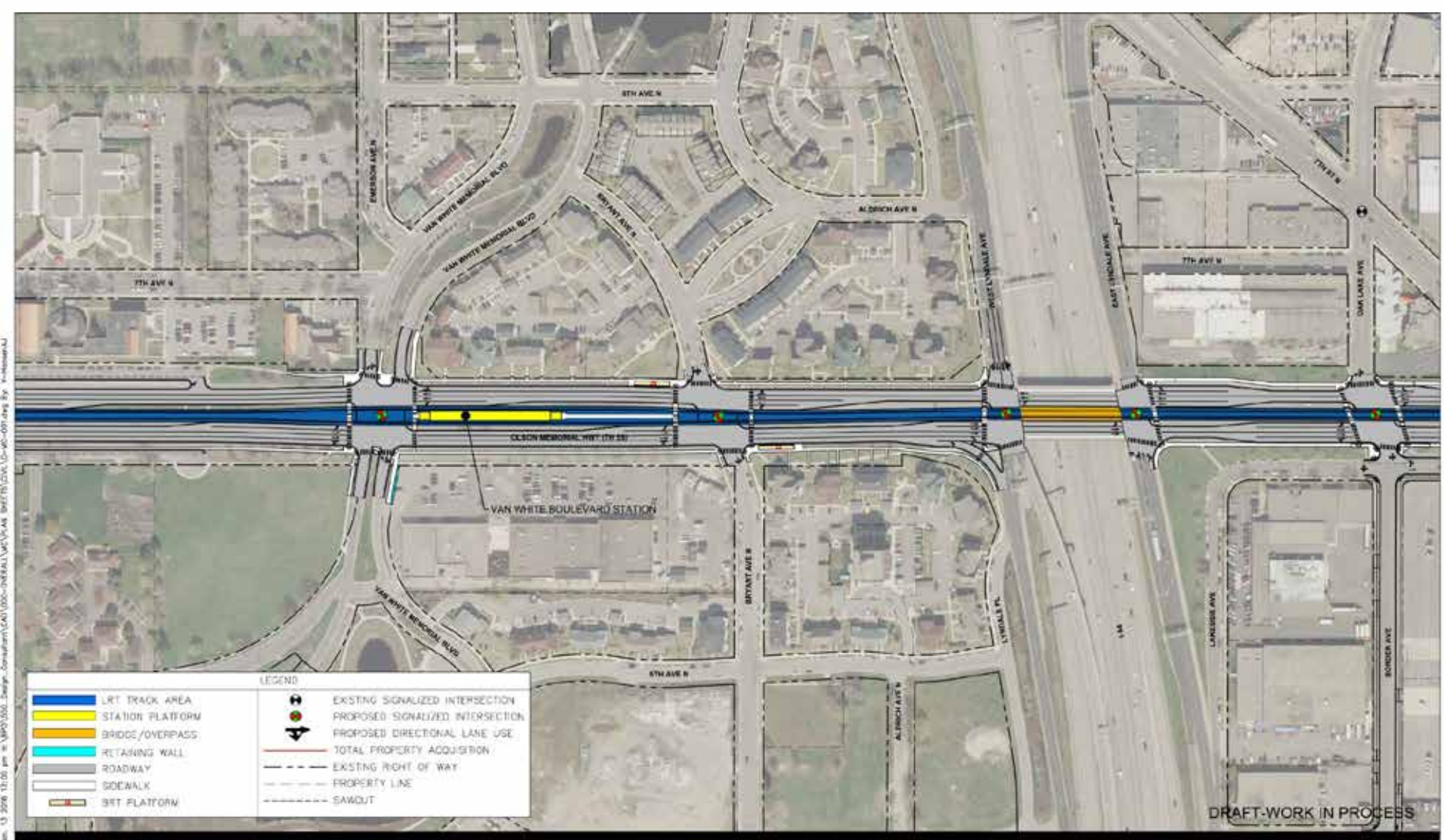
BLUE LINE LRT EXTENSION

CITY OF MINNEAPOLIS
MUNICIPAL CONSENT LAYOUT



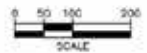
1





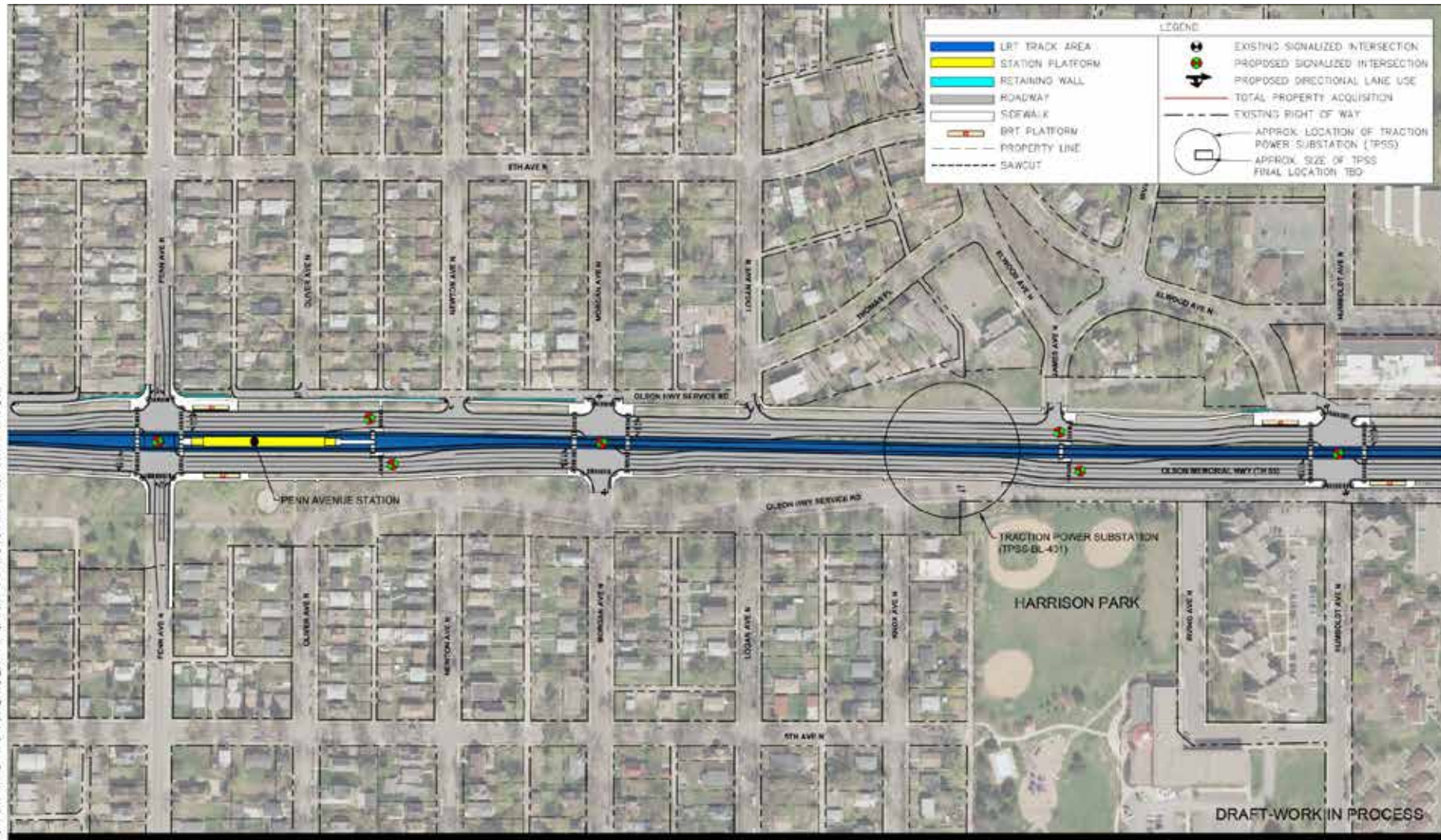
Kimley»Horn

BLUE LINE LRT EXTENSION

CITY OF MINNEAPOLIS
MUNICIPAL CONSENT LAYOUT

2





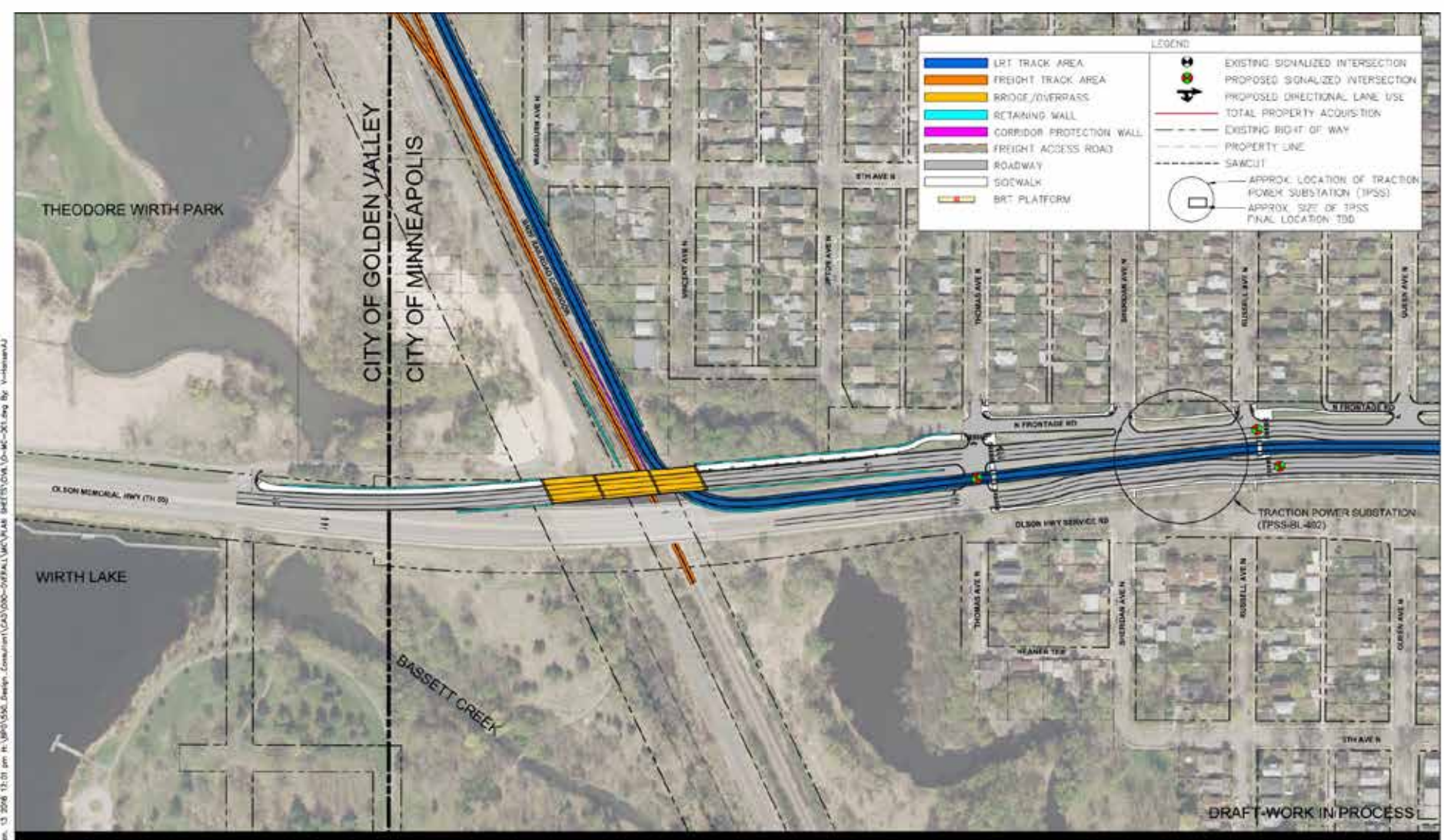
Kimley»Horn

BLUE LINE LRT EXTENSION CITY OF MINNEAPOLIS MUNICIPAL CONSENT LAYOUT



3





Kimley»Horn

BLUE LINE LRT EXTENSION

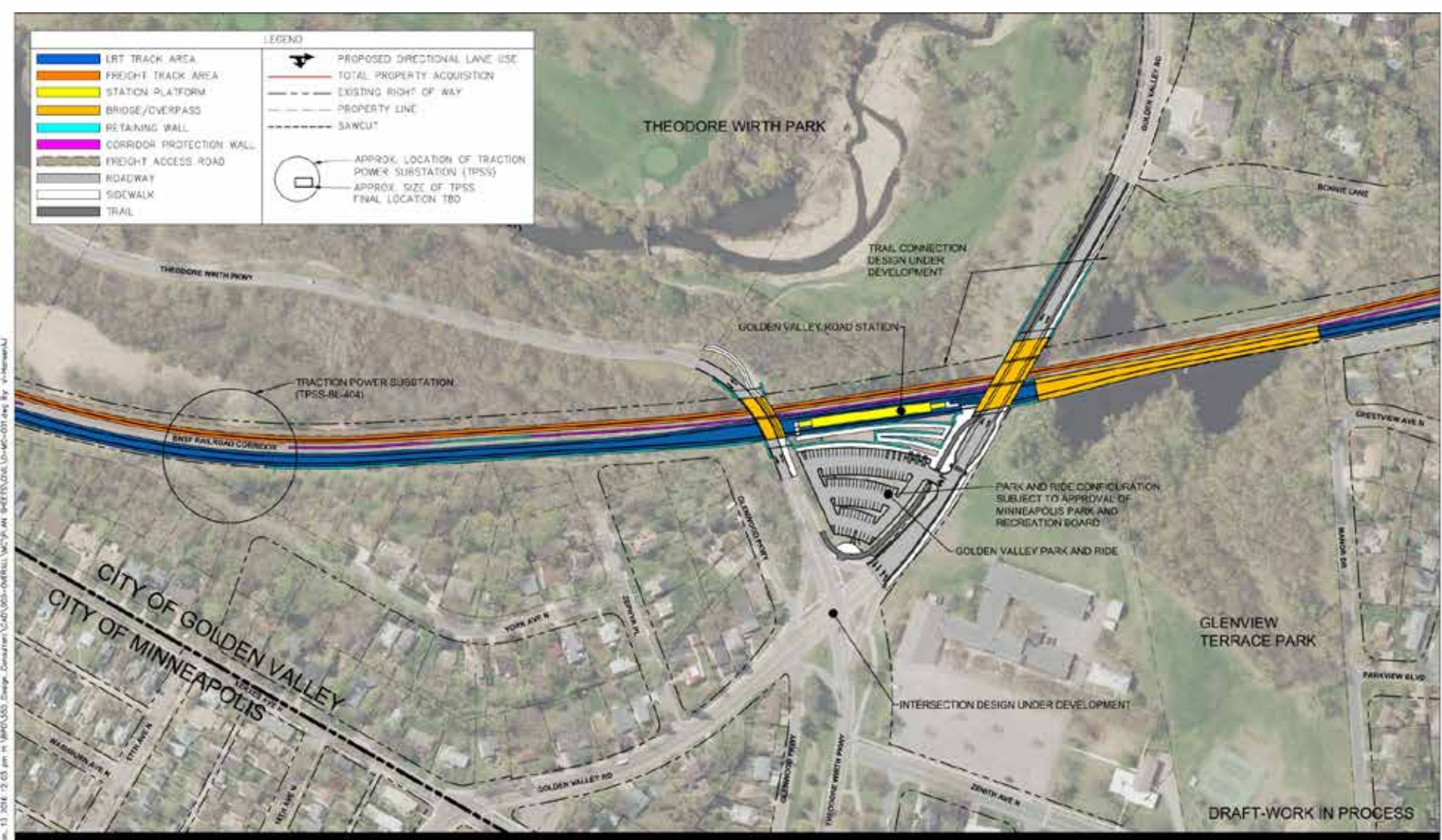
CITY OF MINNEAPOLIS
MUNICIPAL CONSENT LAYOUT



4









Kimley»Horn

BLUE LINE LRT EXTENSION

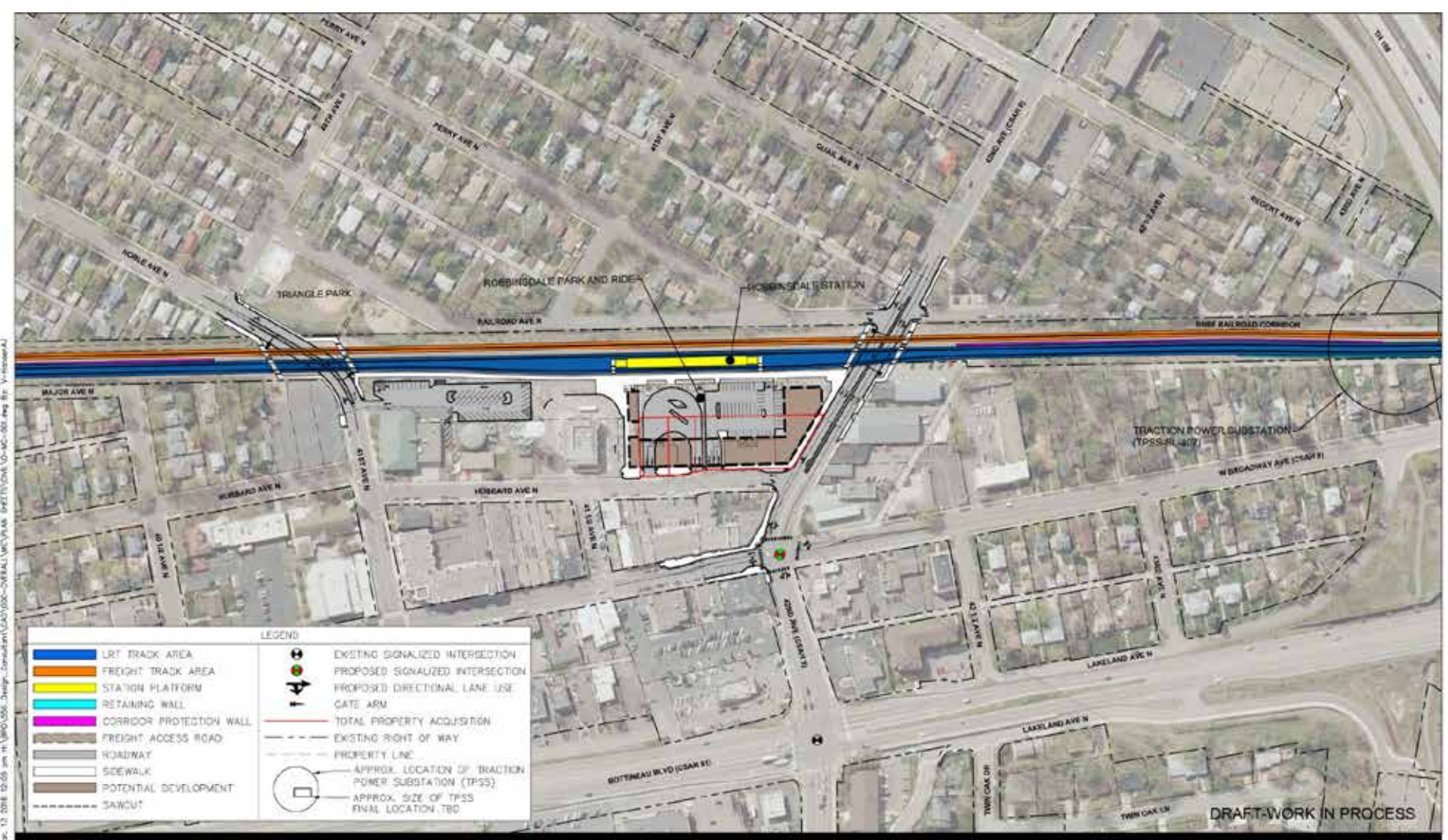
CITY OF ROBBINSDALE
MUNICIPAL CONSENT LAYOUT



8







Kimley»Horn

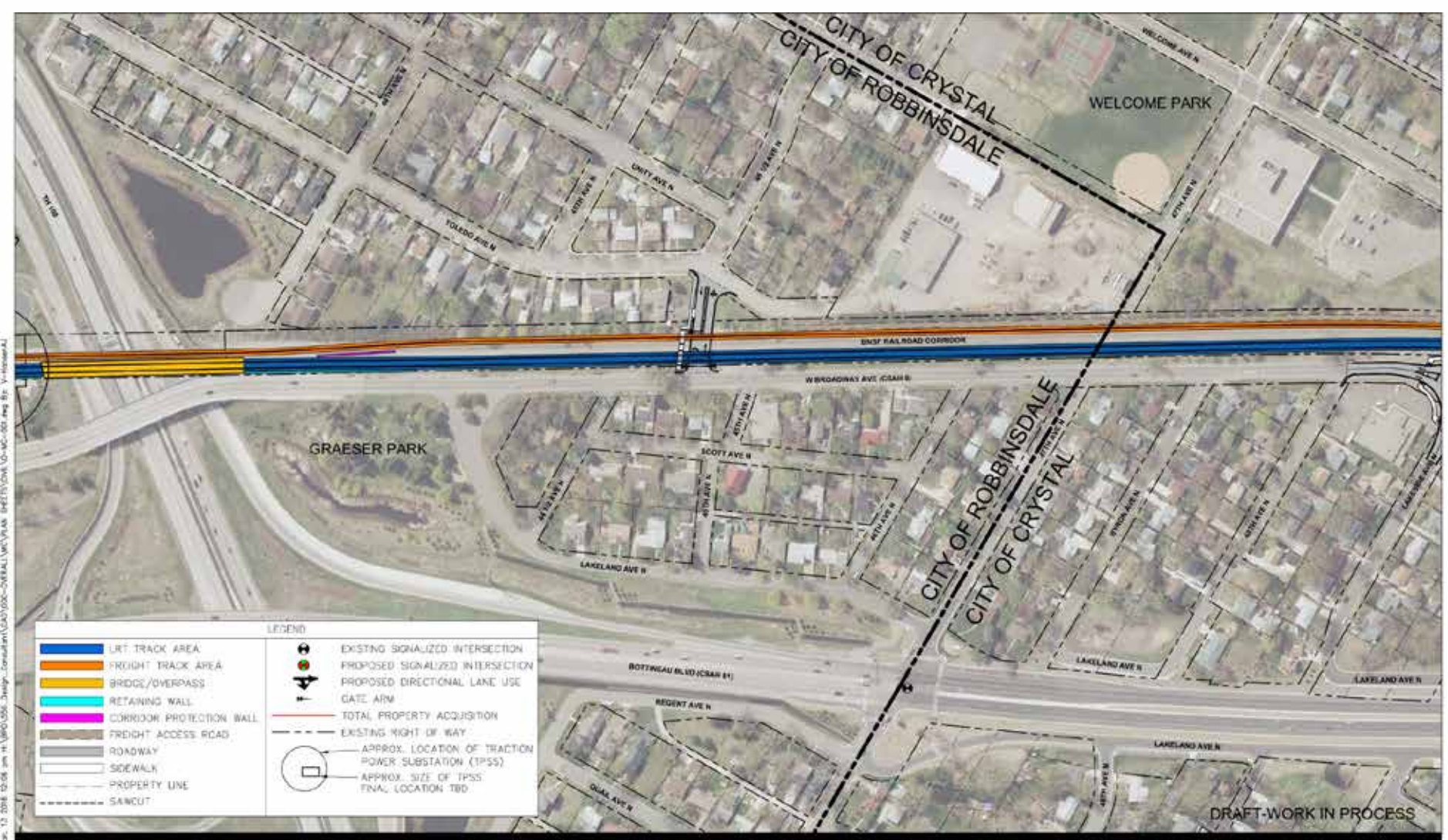
BLUE LINE LRT EXTENSION

CITY OF ROBBINSDALE
MUNICIPAL CONSENT LAYOUT



10





Kimley»Horn

BLUE LINE LRT EXTENSION

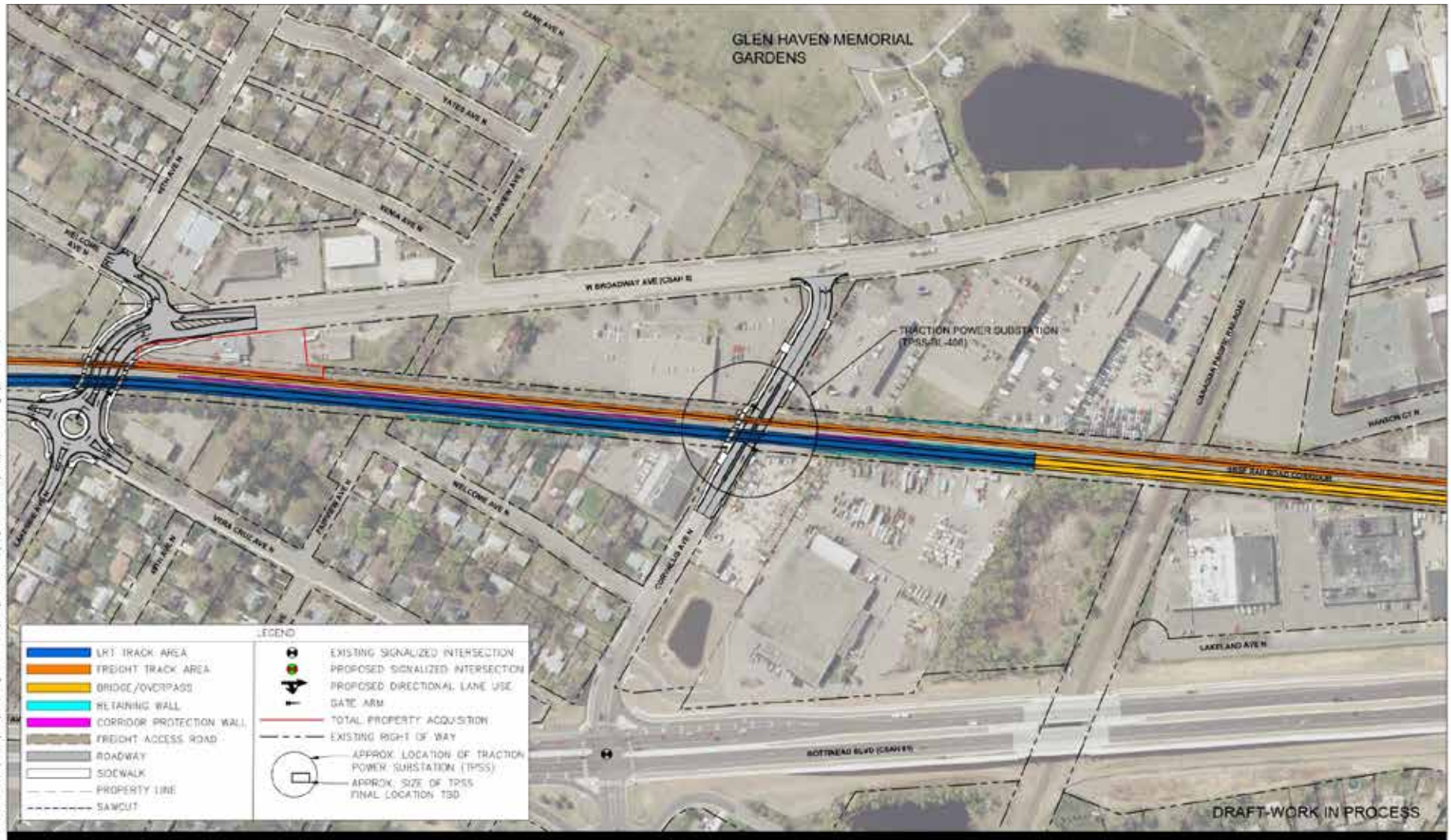
CITY OF ROBBINSDALE / CITY OF CRYSTAL
MUNICIPAL CONSENT LAYOUT



11



Apr. 13 2018 12:09 pm in V:\P\7000_Images_Computer\1243\1243-01\BLL\1243-01-010.dwg by T-Hillman\A2



Kimley»Horn

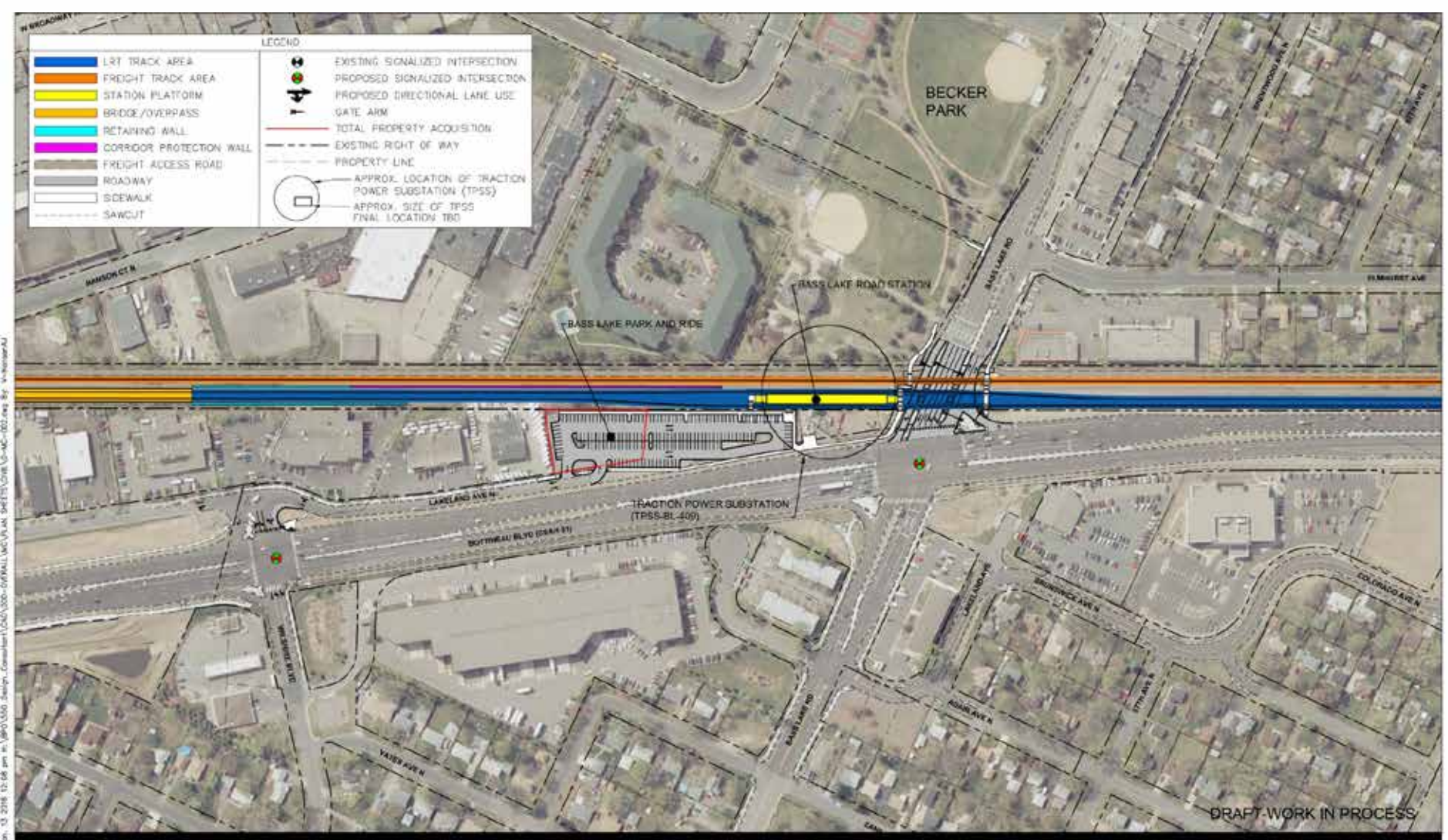
BLUE LINE LRT EXTENSION

CITY OF CRYSTAL
MUNICIPAL CONSENT LAYOUT



12





Kimley»Horn

BLUE LINE LRT EXTENSION

CITY OF CRYSTAL
MUNICIPAL CONSENT LAYOUT



13





Kimley»Horn

BLUE LINE LRT EXTENSION

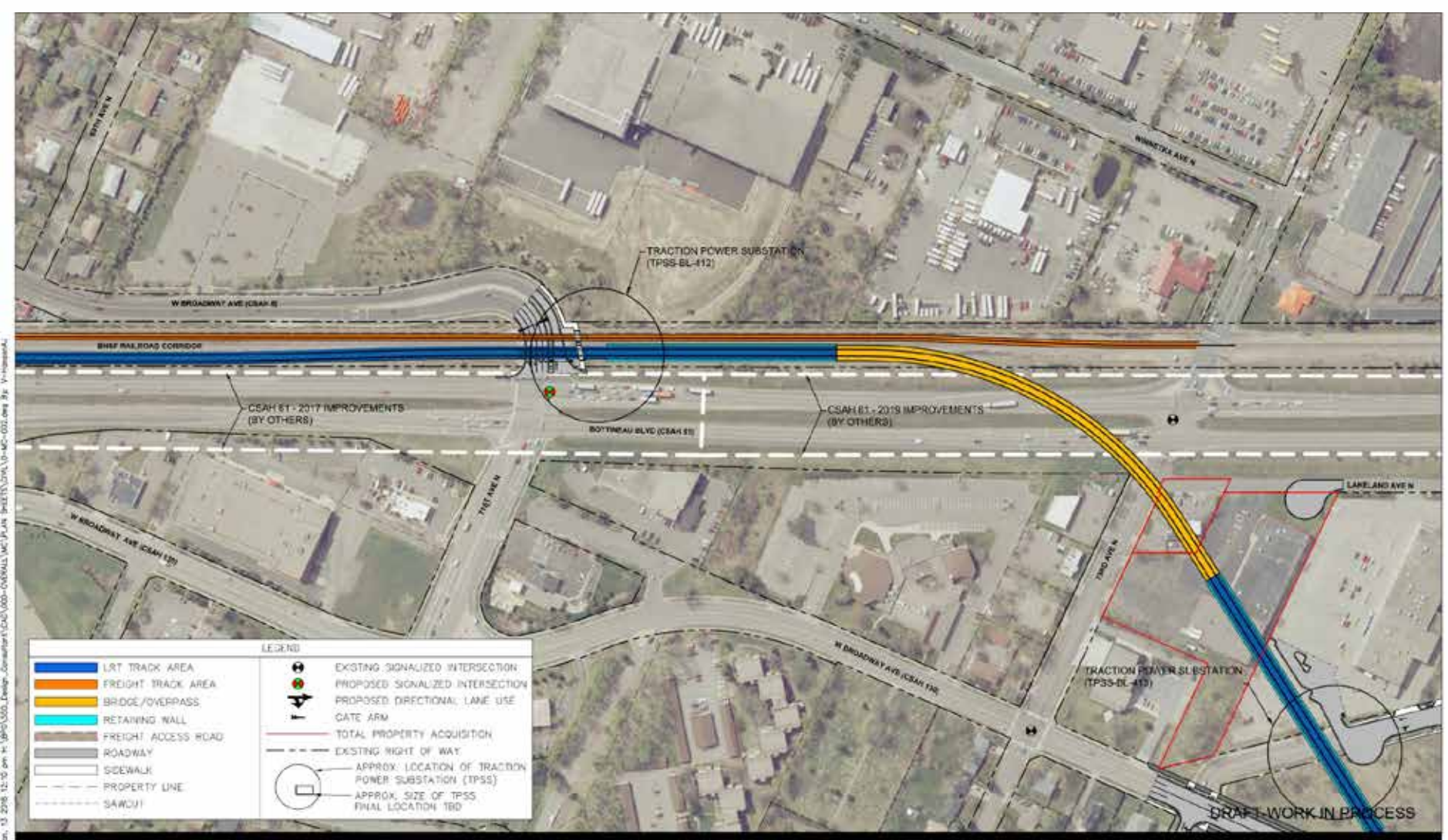
CITY OF CRYSTAL
MUNICIPAL CONSENT LAYOUT



14







Kimley»Horn

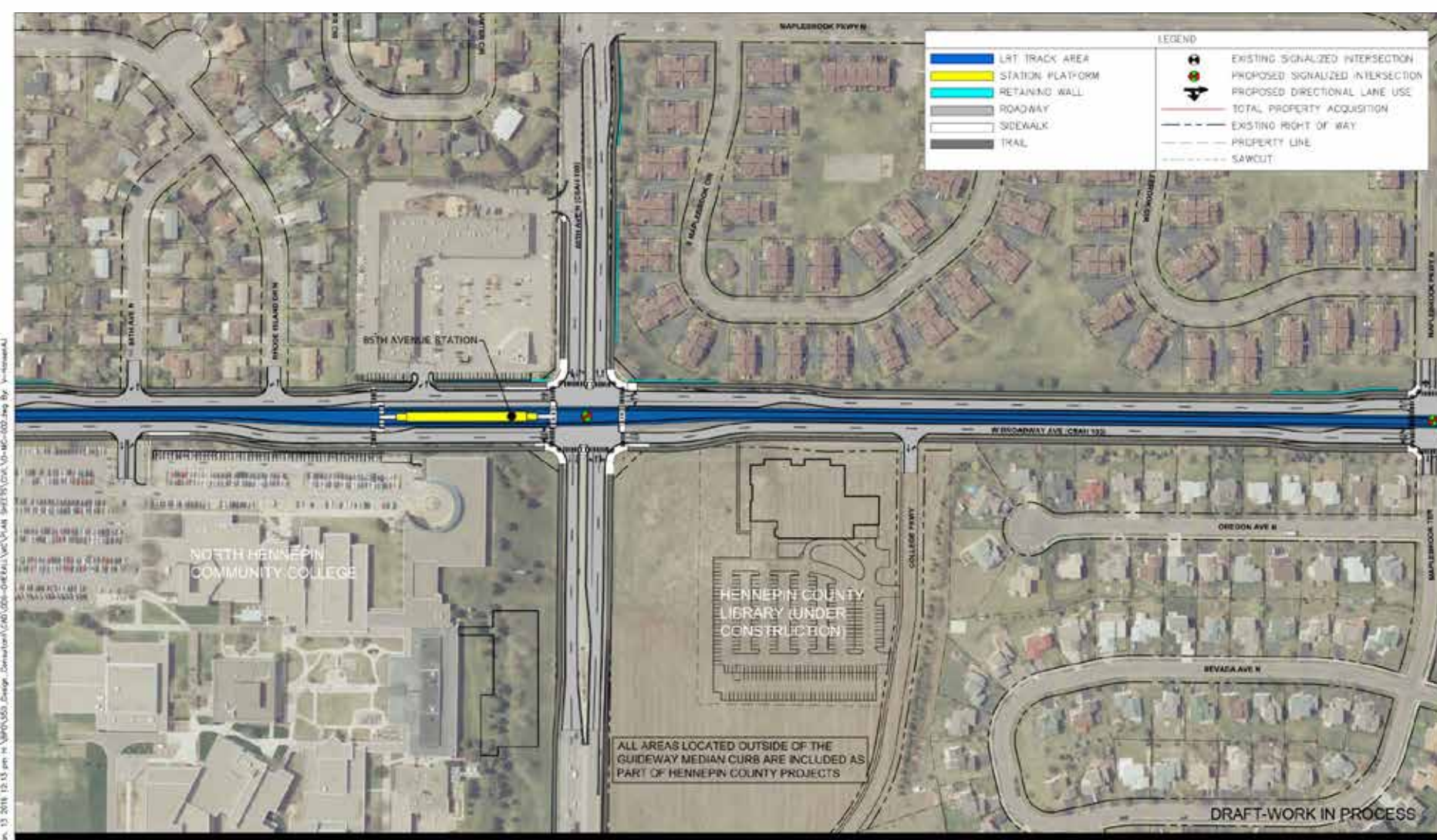
BLUE LINE LRT EXTENSION

CITY OF BROOKLYN PARK
MUNICIPAL CONSENT LAYOUT



17





Kimley»Horn

BLUE LINE LRT EXTENSION

CITY OF BROOKLYN PARK
MUNICIPAL CONSENT LAYOUT



20





Kimley»Horn

BLUE LINE LRT EXTENSION

CITY OF BROOKLYN PARK
MUNICIPAL CONSENT LAYOUT



21





Kimley»Horn

BLUE LINE LRT EXTENSION

CITY OF BROOKLYN PARK
MUNICIPAL CONSENT LAYOUT



22



Jun. 13, 2018 12:14 pm H:\MPO\GIS\Design\Consulting\200-ONE RAIL VEC\PLAN_SHEET 35\DWG 10-MP-002.dwg By: j\m\m\m



Kimley»Horn

BLUE LINE LRT EXTENSION

CITY OF BROOKLYN PARK
MUNICIPAL CONSENT LAYOUT



23



Jun. 13 2019 12:15 pm H:\MPO\GIS\Change...Consultant\GND\GIS\Blue Line V-P-Plan_Sheet 25.dwg User: jhansen



Kimley»Horn

BLUE LINE LRT EXTENSION

CITY OF BROOKLYN PARK
MUNICIPAL CONSENT LAYOUT



24



Jun 13 2019 12:15 pm H:\MPO\GIS\Design\Consulting\240-GDS-ONE Rail VNC\PLAN_SHEET\35-GDS-VN-100-002.dwg By: j-morales



Kimley»Horn

BLUE LINE LRT EXTENSION

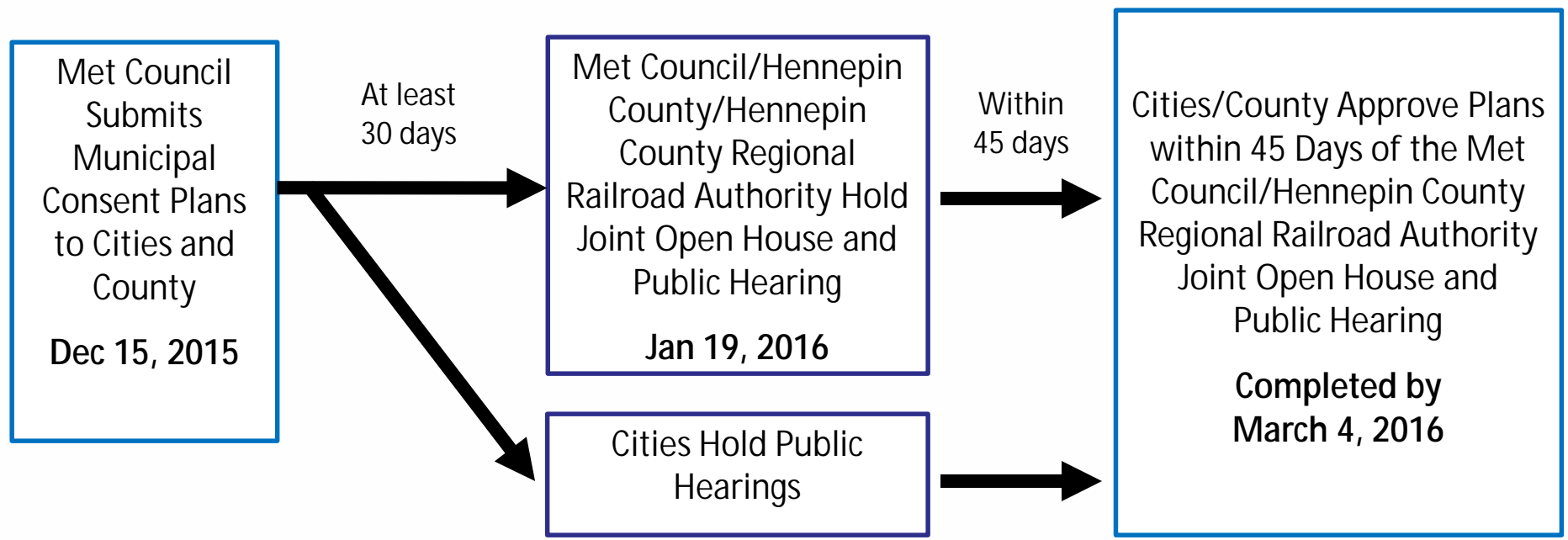
CITY OF BROOKLYN PARK
MUNICIPAL CONSENT LAYOUT



25



Municipal Consent Schedule



Public Hearing Schedule

City/County	Open House/ Public Hearing	Committee/ Council/ Board Action
Brooklyn Park: Published	Jan 25	Feb 22
Crystal: Published	Jan 14: Open House Feb 2: Public Hearing	Feb 16
Robbinsdale	Feb 16	March 2
Golden Valley: Published	Feb 2	Feb 16
Minneapolis (T&PW): Published	Feb 2 (Public Hearing Only)	Feb 2
Minneapolis (Council)	n/a	Feb 12
Hennepin County	Jan 19	TBD
Hennepin County Regional Railroad Authority	Jan 19	n/a

NOTE: Dates are tentative until officially noticed by city/county.



Submitting Public Comments

- Public comments will be accepted until 4:00 p.m., January 29, 2016
- Submit public comments via:
 - § Verbal testimony and written comments at today's hearing
 - § Project's website: BlueLineExt.org
 - § U.S. Mail: Blue Line Extension Project Office, 5514 West Broadway, Suite 200, Crystal, MN 55428 - ATTN: David Davies
 - § TTY: 651.291.0904
 - § E-mail: BlueLineExt@metrotransit.org
 - § Fax : 763.533.4109



Next Steps

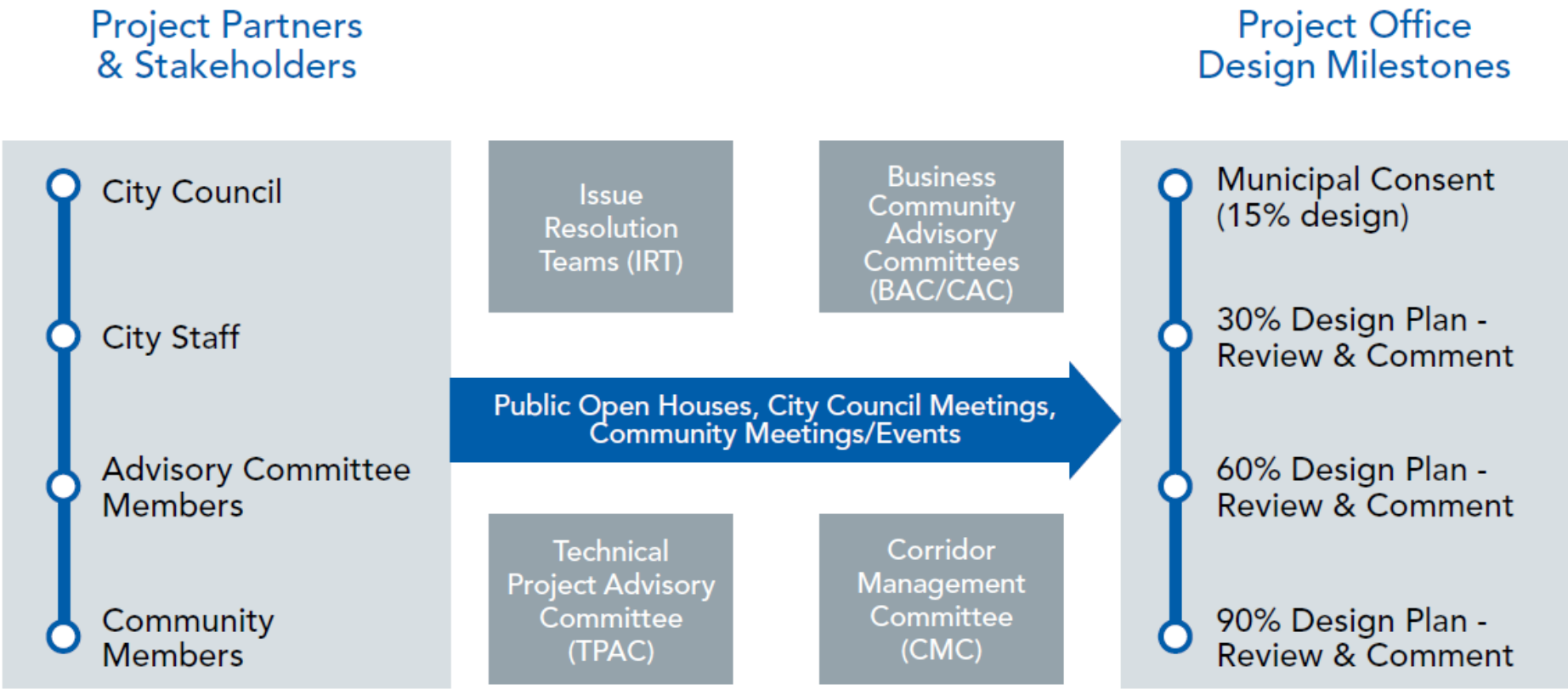


Next Steps After Municipal Consent

- Station design
- Streetscape design
- Utility relocation design
- Design advancement:
 - § LRT track features
 - § Roadway details
 - § OMF features
 - § Bridges and tunnels
 - § System elements
 - § Freight rail features



Continued Design Coordination



More Information



About Us | News & Events | Data & Maps | Publications | Doing Business | Council Meetings | Contact Us | Employment

METROPOLITAN COUNCIL

COMMUNITIES | PARKS | **TRANSPORTATION** | WASTEWATER & WATER | HOUSING | PLANNING

METRO BLUE LINE EXTENSION

Route

Stations

Environmental

Timeline

Project Partners

METRO BLUE LINE EXTENSION

Bottineau Transitway – Minneapolis & Northwestern Communities

The METRO Blue Line Extension (LRT) will operate northwest from downtown Minneapolis through north Minneapolis, Golden Valley, Robbinsdale, Crystal and Brooklyn Park, drawing riders northwest of Brooklyn Park. The proposed alignment is primarily at-grade and will have up to 11 new stations in addition to Target Field Station and about 13 miles of double track. The line will interline with the METRO Blue Line and connect Minneapolis and the region's northwest suburbs with existing LRT on the METRO Green Line, future LRT on the METRO Green Line Extension, bus rapid transit on the METRO Red Line, the Northstar commuter rail line and local and express bus routes.

Latest News
Feds: Met Council can begin designing METRO Blue Line Extension

Route
Click on the map below for more information

Website: BlueLineExt.org

Email: BlueLineExt@metrotransit.org

Twitter: [@BlueLineExt](https://twitter.com/BlueLineExt)

