

SOUTHWEST

Green Line LRT Extension



Corridor Management Committee

November 2, 2016



Today's Topics

- Chair's Remarks
- Project Readiness
- Construction Sequencing/Phasing
- DBE & Workforce Programming/Outreach
- Construction Outreach and Communications



Chair's Update

Project Readiness

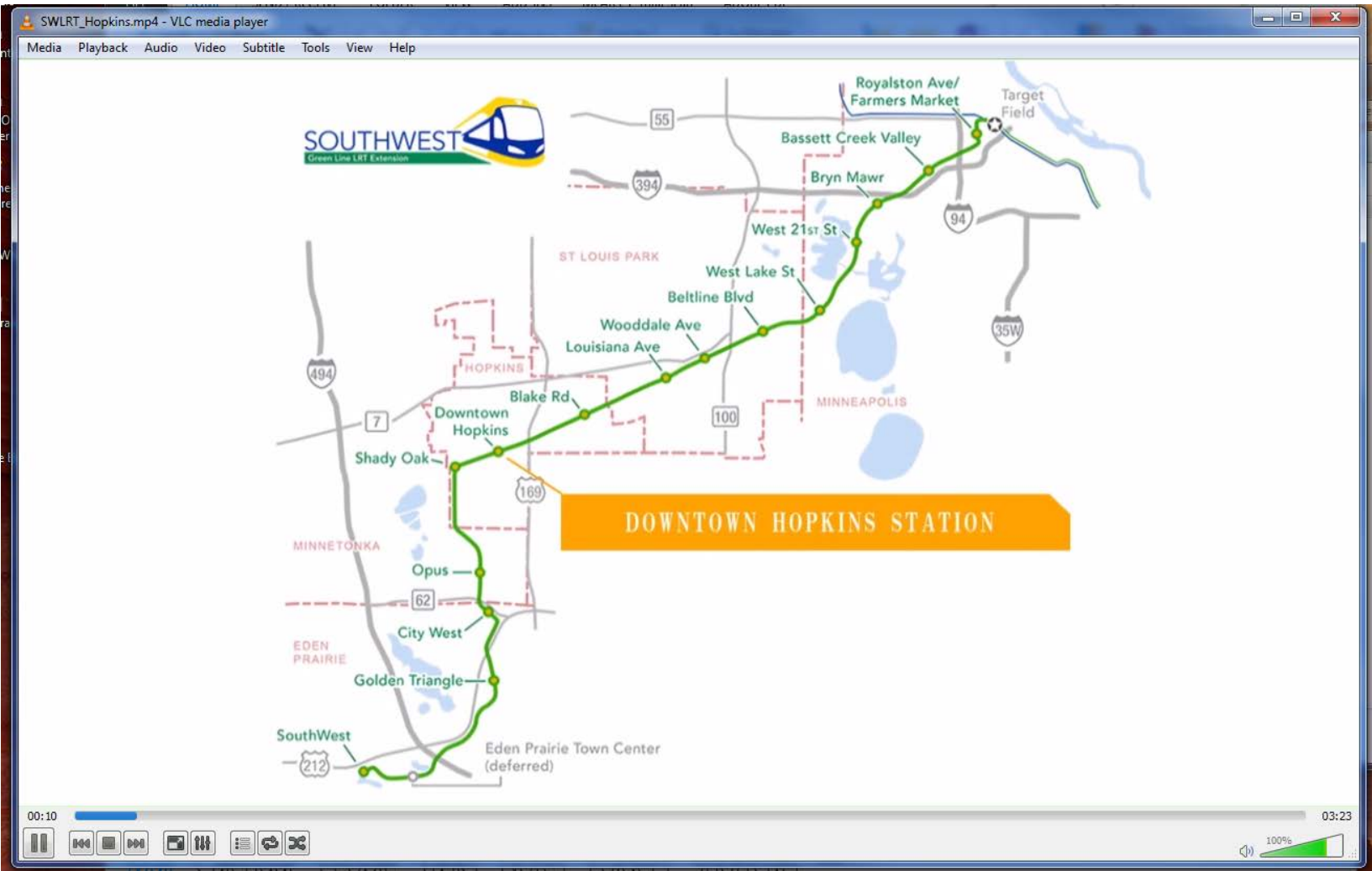
5 Main Contracts

Contract	Procurement Method	Timing	DBE Goal
Civil	Design/Bid/Build	Q1 2017	16%
Systems	Design/Bid/Build	Q2 2017	TBD
Operations & Maintenance Facility	Design/Bid/Build	Q2 2017	TBD
Fare Collection	Request for Proposals	Q3 2019	TBD
Light Rail Vehicles	Request for Proposals	Awarded	n/a

Procurement Schedule Look-Ahead

Milestone	Date
Award Light Rail Vehicle Contract	Oct 2016
FTA Approves Entry into Engineering	Nov 2016
Complete 100% Design Civil Package	Dec 2016
Invitation for Bid Civil Package	Jan 2017
Invitation for Bid Systems Package	April 2017
Invitation for Bid OMF Package	June 2017
FTA Approves FFGA	July 2017
Notice to Proceed Civil Construction Contract	July 2017
Heavy Construction	2017-2020
Revenue Service	2021

Downtown Hopkins Station, Excelsior Bridge and Blake Road Station Animation



Construction Sequencing & Phasing

Construction Sequencing & Phasing

- Balancing objectives:
 - Maintain safe construction sites
 - Provide sufficient work areas for the contractor to optimize productivity & reduce construction durations
 - Provide adequate mobility for all modes/users
 - Maintain reasonable access to businesses & neighborhoods
 - Provide community & business outreach throughout construction
 - Manage project construction budget and schedule

Typical LRT Construction Sequencing



Utilities

- Excavation
- Relocation / installation



Site Prep

- Clear buildings
- Establish work zones, detours



Structures, Track, Stations

- Track beds
- Track
- Buildings
- Roadwork
- Trails



Systems

- Overhead catenary
- Safety & security
- Ticket vending



Testing

- Safety
- Communications
- Operator training

Outreach & Communications

Utilities

- Excavation
- Relocation/installation of utilities
- Restoration



Site Prep

- Contractor mobilization
- Clear buildings
- Establish work zones: erecting fencing, barriers
- Establish detours



Structures, Track & Stations

- “Heavy Construction”
 - Track beds
 - Track
 - Bridges
 - Tunnels
 - Buildings
 - Roadwork
 - Trails



Systems

- Overhead catenary
- Safety & security
- Communications
 - Radio
 - Variable message signs
 - Intrusion detection
 - Close circuit TV
 - Emergency call boxes
 - Telephones
- Ticket vending machines
- Traction power substations
- Signaling systems



Testing

- Simulates revenue service operations
- Safety
- Communications
- Operator training



Typical LRT Construction Sequencing



Utilities

- Excavation
- Relocation / installation



Site Prep

- Clear buildings
- Establish work zones, detours



Structures, Track, Stations

- Track beds
- Track
- Buildings
- Roadwork
- Trails
- OMF



Systems

- Overhead catenary
- Safety & security
- Ticket vending



Testing

- Safety
- Communications
- Operator training

O u t r e a c h & C o m m u n i c a t i o n s

Southwest LRT Construction Phasing

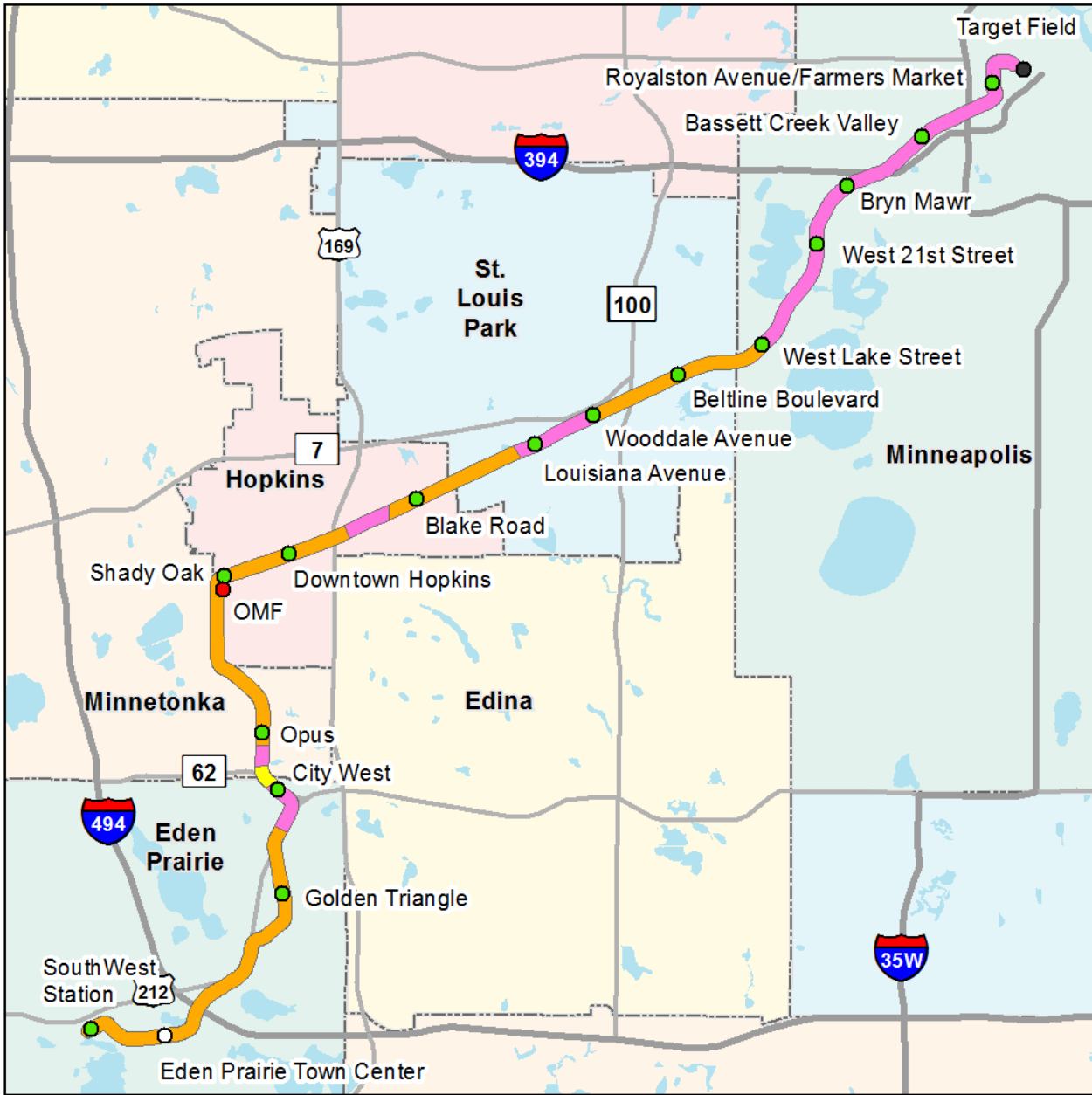
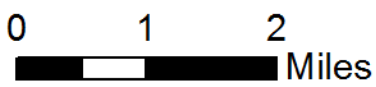
LRT Stations

- New
- Deferred
- Existing

Civil Construction Phasing

- Start: Second half of 2017
Completion: Mid 2019
- Start: Second half of 2017
Completion: Late 2019
- Start: Second half of 2017
Completion: Early / Mid 2020

● Operation and Maintenance Facility (OMF)



Southwest LRT Construction Phasing: Eden Prairie & Minnetonka

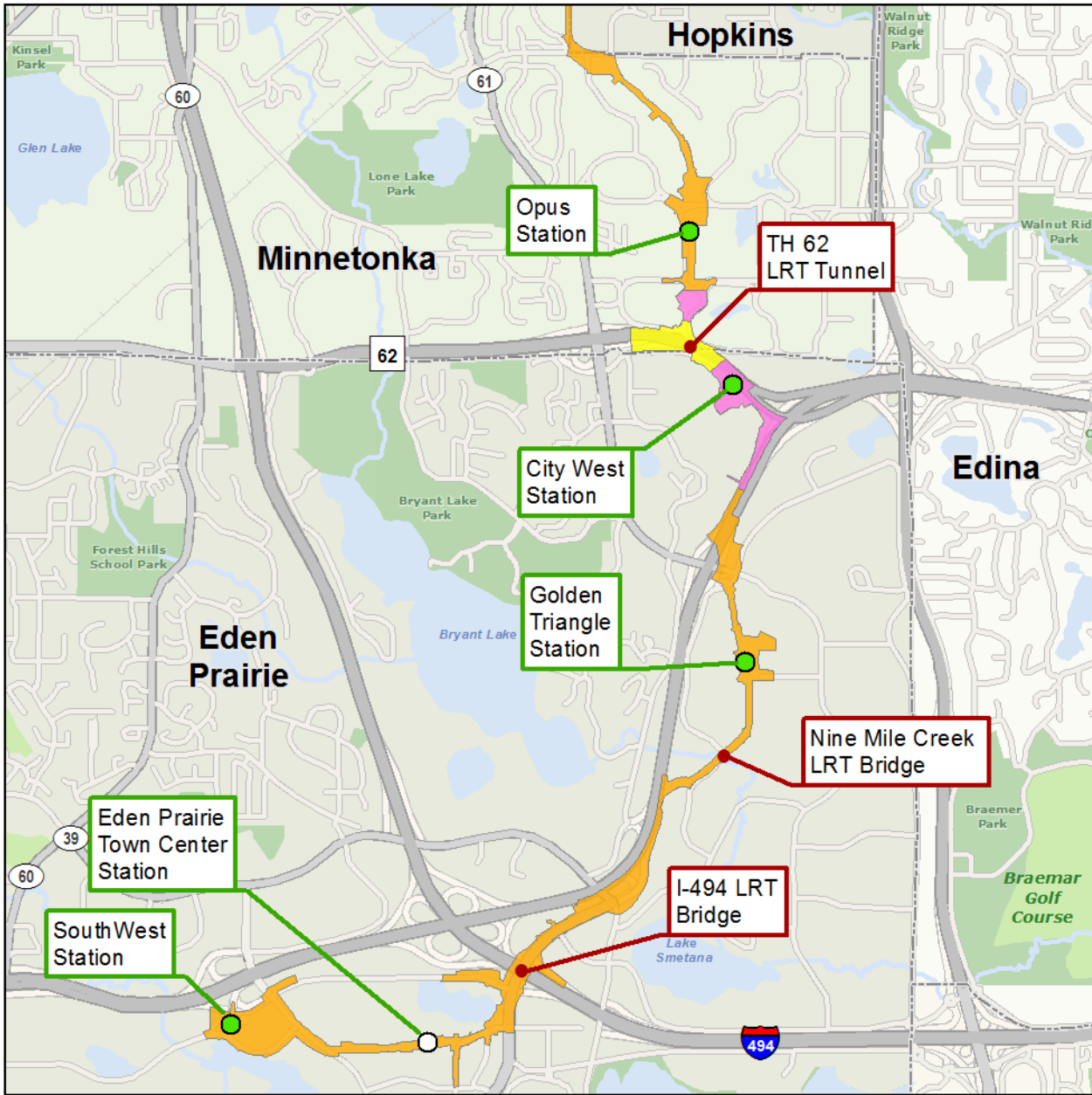
● Key Construction Features

LRT Stations

- New
- Deferred

Civil Construction Phasing

- Start: Second half of 2017
Completion: Mid 2019
- Start: Second half of 2017
Completion: Late 2019
- Start: Second half of 2017
Completion: Early / Mid 2020

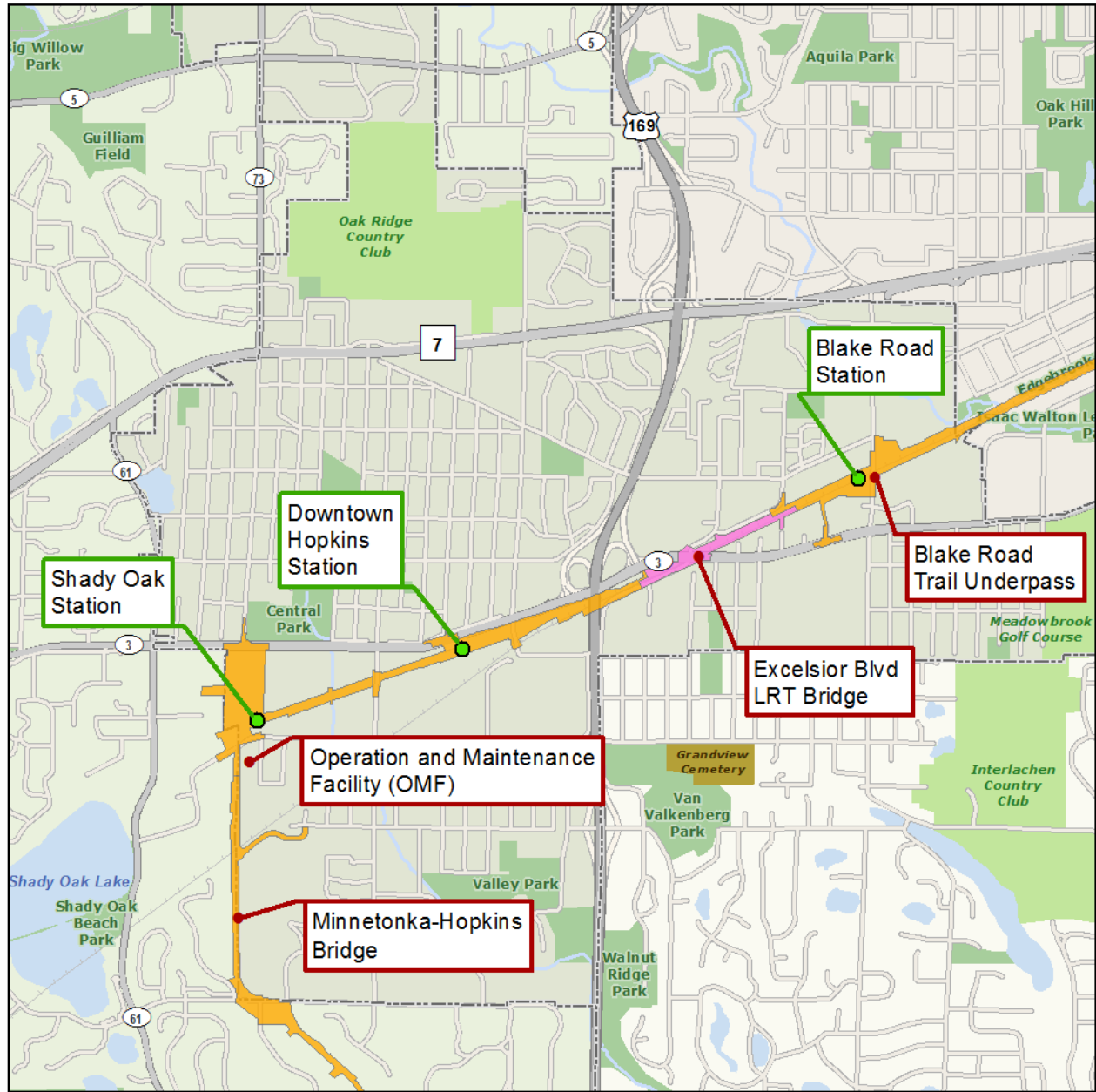


Southwest LRT Construction Phasing: Hopkins

- Key Construction Features
- LRT Stations

Civil Construction Phasing

- Start: Second half of 2017
Completion: Mid 2019
- Start: Second half of 2017
Completion: Early / Mid 2020

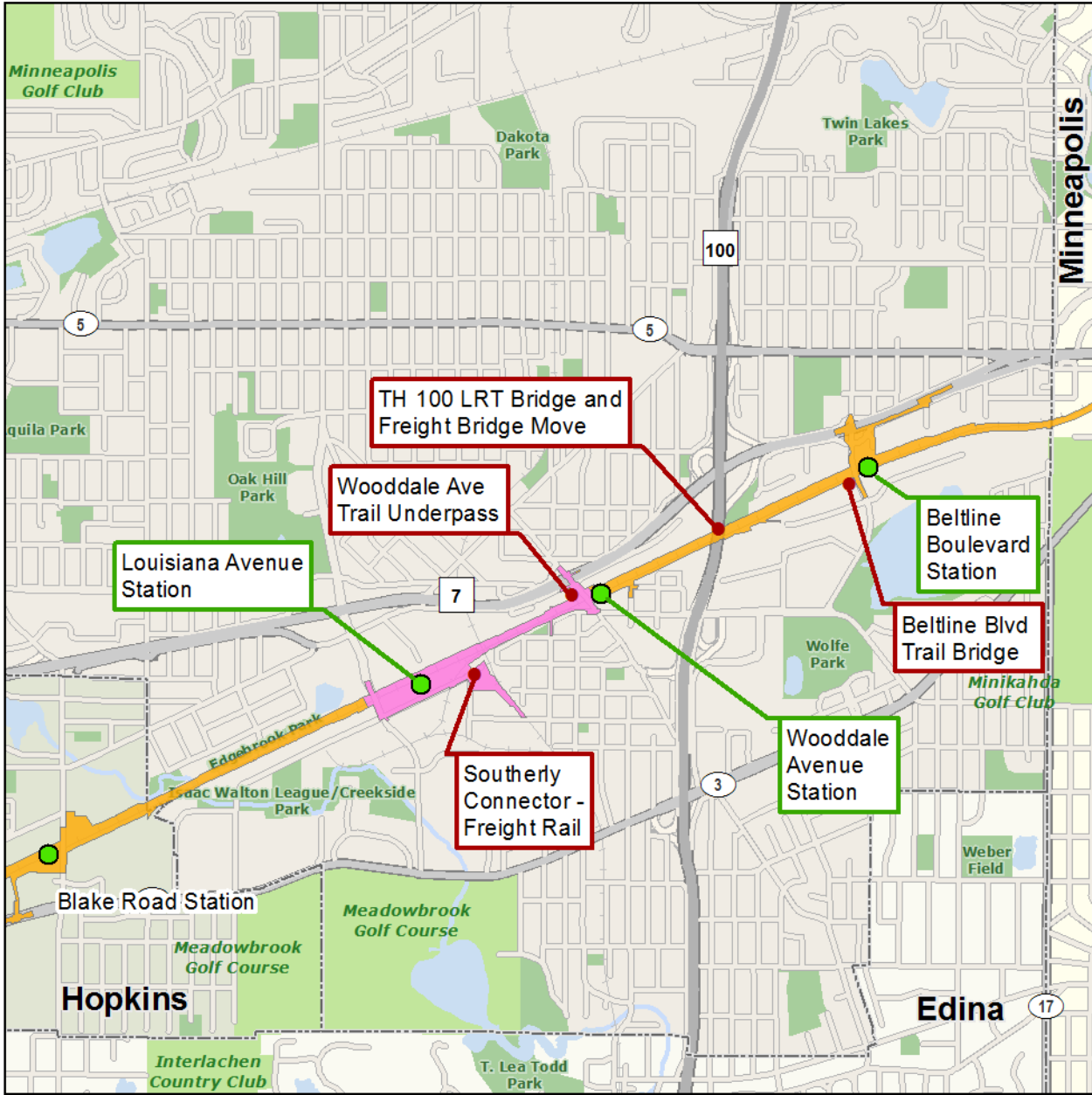


Southwest LRT Construction Phasing: St. Louis Park

- Key Construction Features
- LRT Stations

Civil Construction Phasing

- Start: Second half of 2017
Completion: Mid 2019
- Start: Second half of 2017
Completion: Early / Mid 2020



Southwest LRT Construction Phasing: Minneapolis

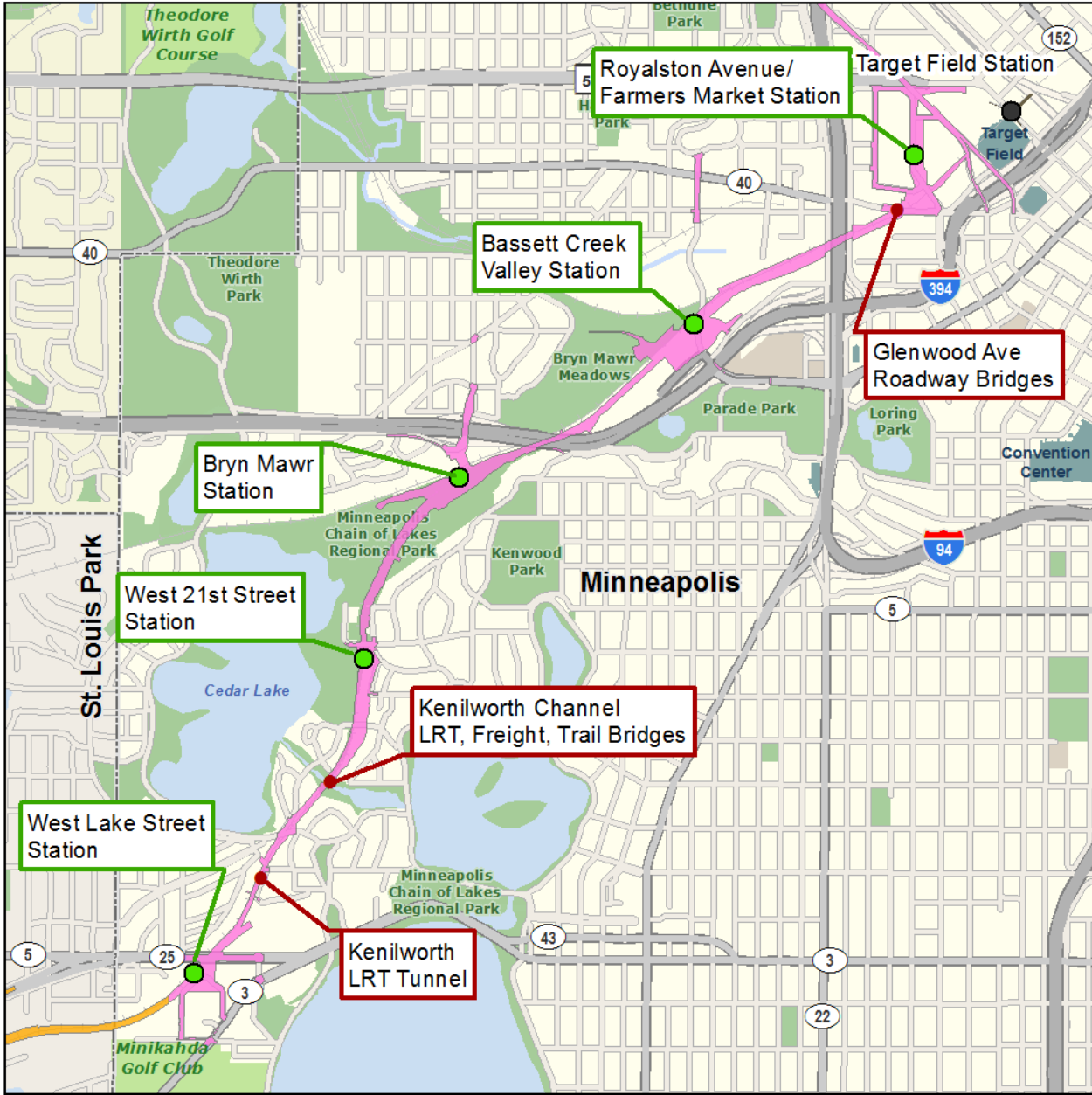
● Key Construction Features

LRT Stations

- New
- Existing

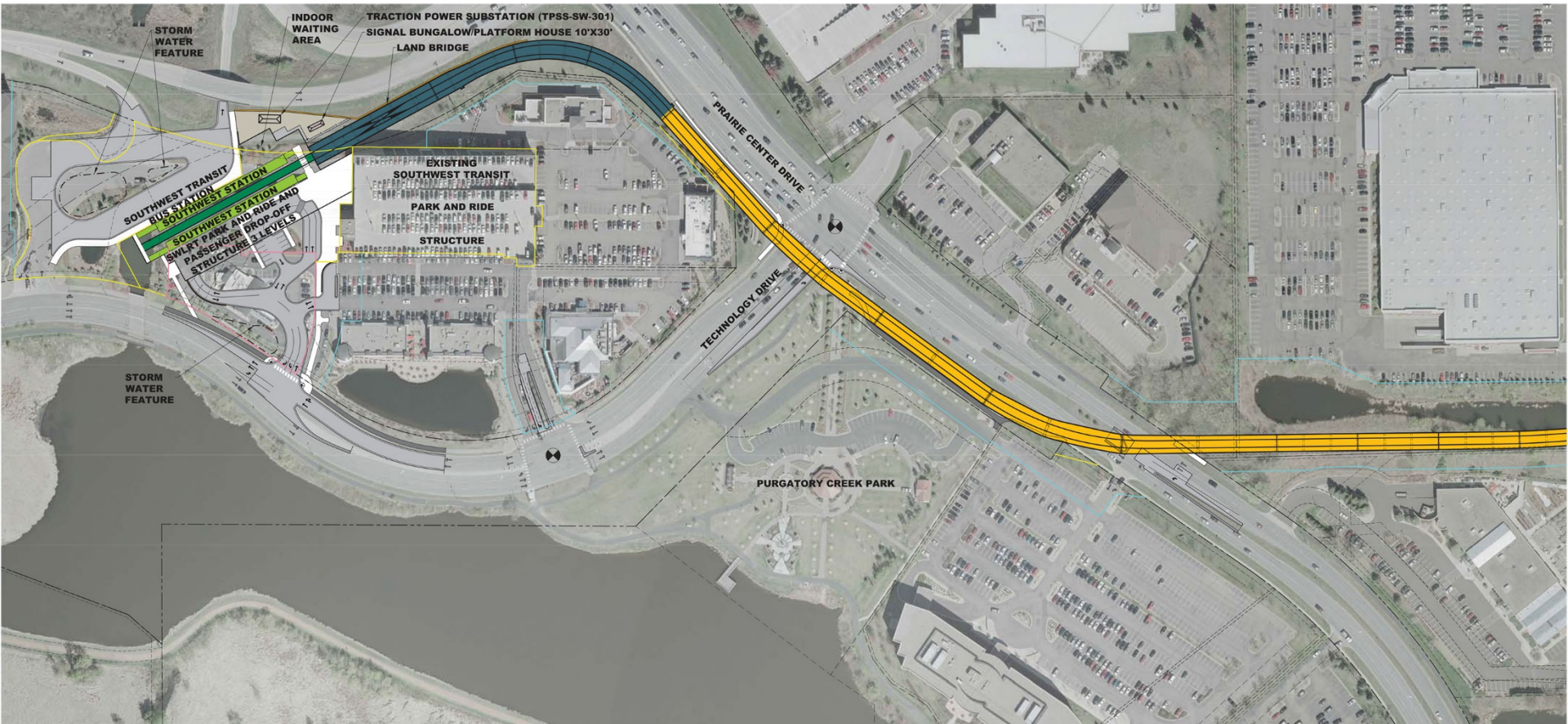
Civil Construction Phasing

- Start: Second half of 2017
Completion: Mid 2019
- Start: Second half of 2017
Completion: Early / Mid 2020



SouthWest Transit Station Construction Phasing

SouthWest Station



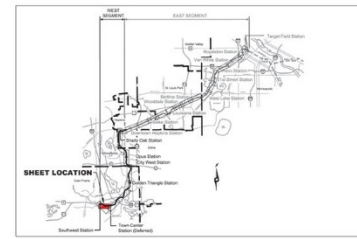
TYPICAL SECTION AT LAND BRIDGE



TYPICAL SECTION AT BRIDGE

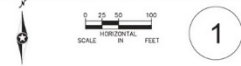
SOUTHWEST LRT ALIGNMENT SEGMENT W1 - EDEN PRAIRIE SOUTHWEST STATION

COLOR LEGEND			
	LRT TRACK AREA		EXISTING SIGNALIZED INTERSECTION
	PEDESTRIAN / SIDEWALK AREA		PROPOSED SIGNALIZED INTERSECTION
	STATION PLATFORM		TRACTION POWER SUBSTATION
	TUNNEL		SYSTEMS BUILDING (DESIGN VARIES)
	ROADWAY		GATE ARM
	TRAIL / BIKEWAY		TOTAL PROPERTY ACQUISITION
	SURFACE PARKING		PARTIAL PROPERTY ACQUISITION
	BRIDGE		RIGHT OF WAY
	RETAINING WALL		PROPERTY LINE
			TEMPORARY CONSTRUCTION EASEMENT



THE PROPOSED SOUTHWEST LRT PROJECT IS NOT FINAL BUT IS STILL UNDER ENVIRONMENTAL REVIEW AND THE PROJECT IS SUBJECT TO CHANGE. THESE PLANS ARE NOT FINAL. THE COUNCIL, THROUGH THE DEVELOPMENT OF THESE PLANS, DOES NOT INTEND THAT THEY WILL PREJUDGE OR COMPROMISE ANY STATE OR FEDERAL ENVIRONMENTAL REVIEW OR OTHER LEGAL REQUIREMENTS. THESE PLANS DO NOT LIMIT THE PROJECT DESIGN ALTERNATIVES OR MITIGATIVE MEASURES THAT THE COUNCIL MAY UNDERTAKE IF THE PROPOSED SMART PROJECT PROCEEDS TO CONSTRUCTION. THE COUNCIL WILL NOT TAKE FINAL ACTION ON THIS MATTER UNLESS THE COUNCIL PROCEEDS WITH THE PROJECT AFTER THE FTA'S RECORD OF DECISION AND THE COUNCIL'S DETERMINATION OF ADEQUACY.

JANUARY 2016

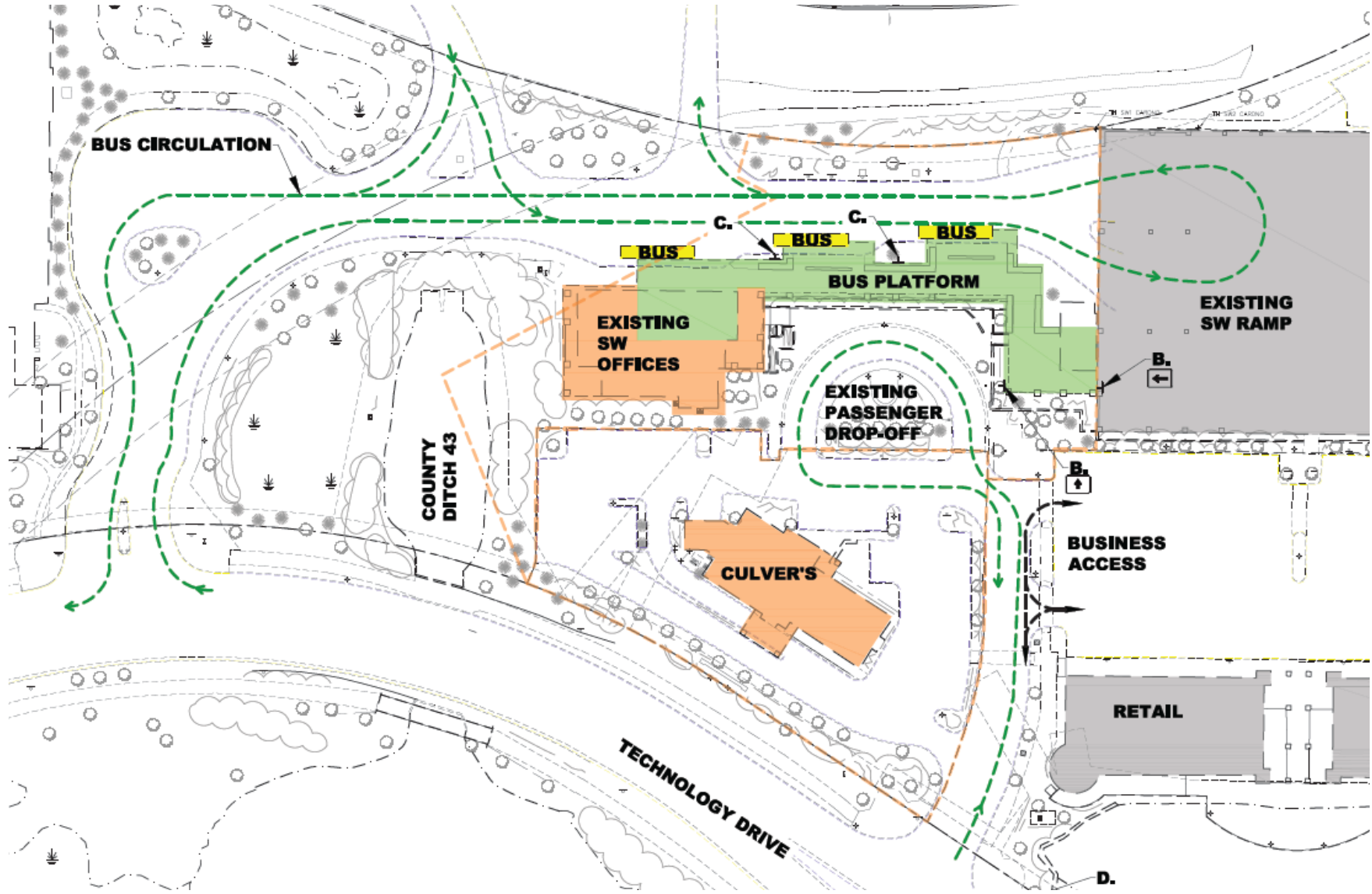


SouthWest Station

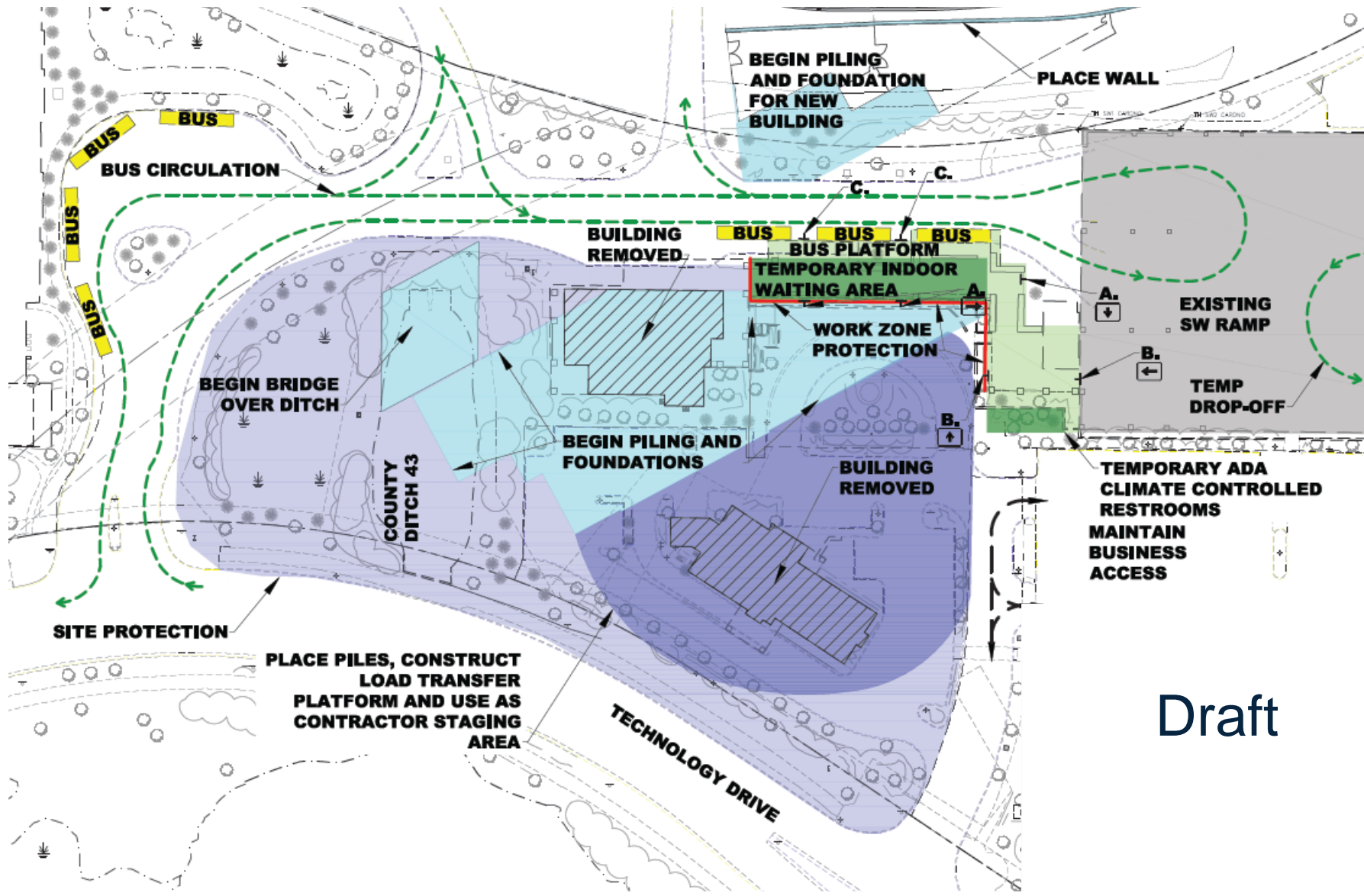
- Add 450-space ramp to existing 925-space park-and-ride ramp



SouthWest Station: Phase 1

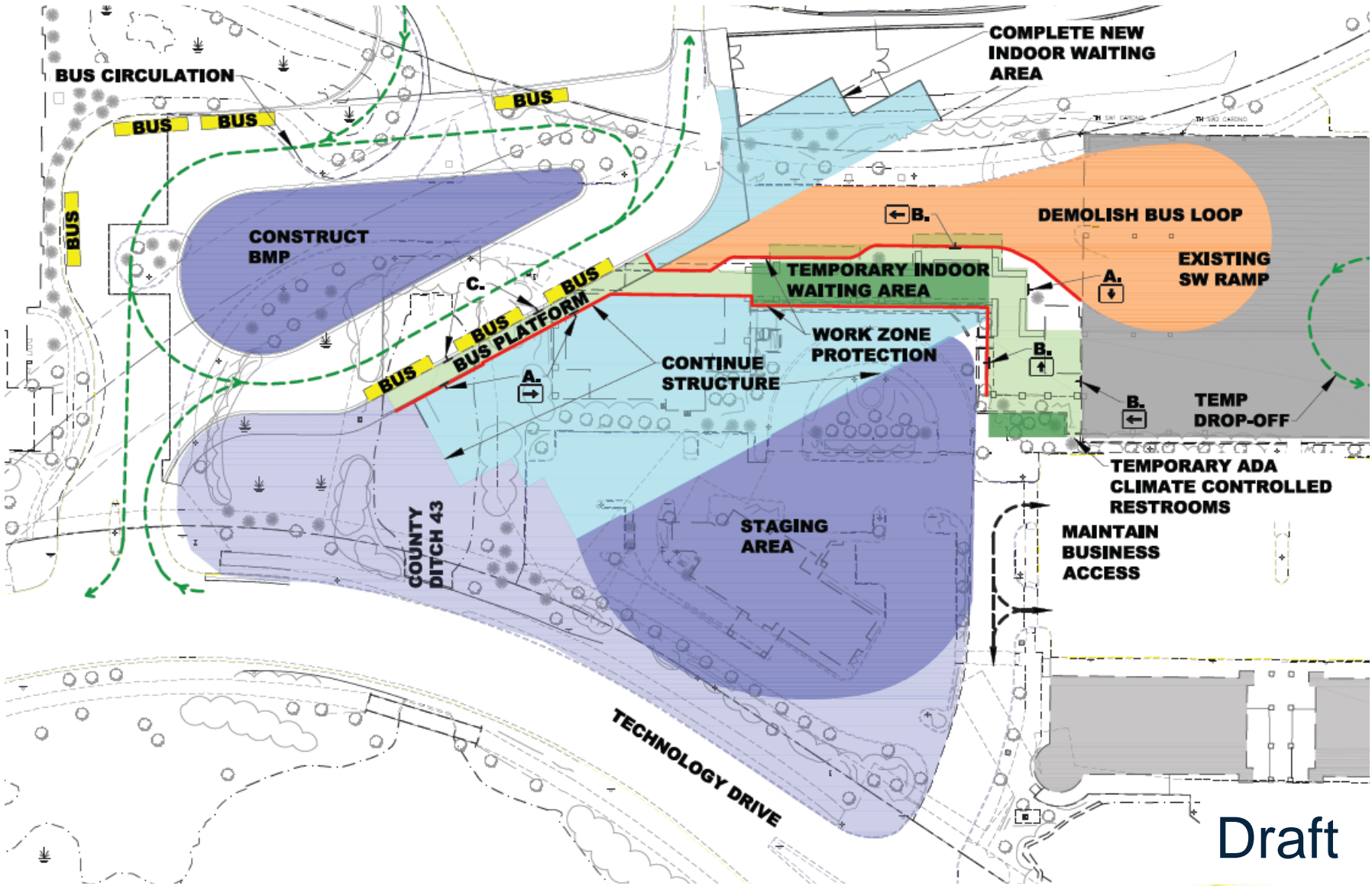


SouthWest Station: Phase 2



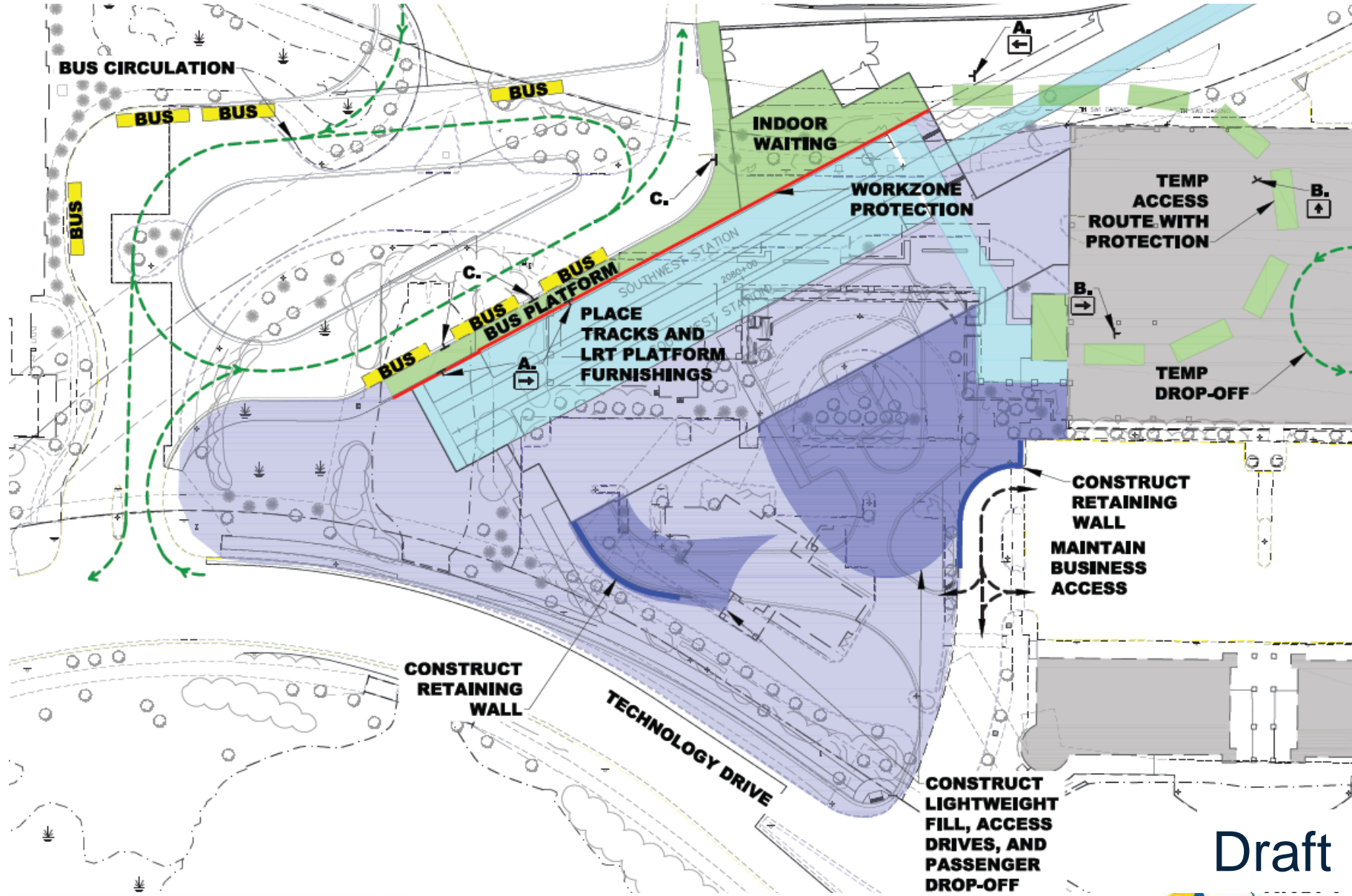
Draft

SouthWest Station: Phase 3



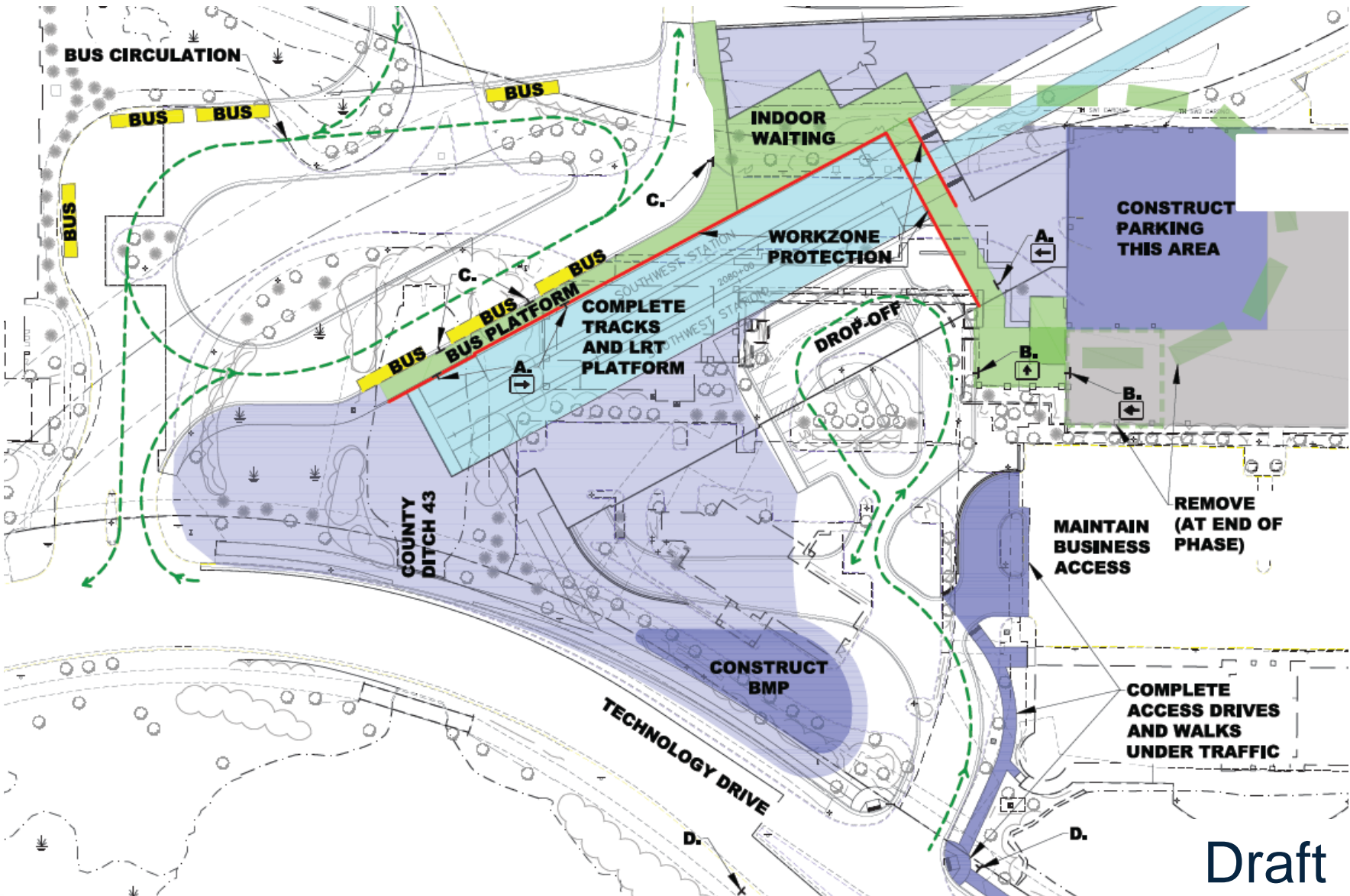
Draft

SouthWest Station: Phase 4



Draft

SouthWest Station: Phase 5



Draft

DBE & Workforce Programming/Outreach

Project Goals

- Project specific DBE subcontracting goals
 - 16% DBE goal on civil contract
 - Goals will be established for OMF & systems contract
- Workforce labor goals for Hennepin County:
 - 32% minority
 - 6% female



DBE Contract Monitoring System

- Standard across all Council monitored contracts
- Monthly subcontractor reporting
- Payment verifications
- Site visits



Great Minds Retreat

- Stakeholder engagement and collaboration
- Develop, discuss & strategize
- Develop cooperative action plans
- Recruit volunteers for committees



Joint DBE/Workforce Oversight Committee

- Membership identified from Great Minds participants
- Monthly contractor reporting on achievement



Bid Stage DBE Outreach

- Dec 5, 2016:
 - Project info session and networking
- Civil construction pre-bid and DBE mixer
 - Structured 1 on 1 interviews with prime bidders
- Bid evaluation interviews, reference checks



Workforce Outreach

- Workforce recruitment event
 - Coordination with unions, schools, training orgs
 - LRT MNCAP training program*
 - Job seeker database registration*

* *Dependent on funding*



DBE Contact Info:

Andrew Larson

Senior EO Consultant

Southwest Project Office

612-373-3896

andrew.larson@metrotransit.org

Construction Outreach and Communications

Your Future Starts Here!

- Hiring 70+ employees with backgrounds in:
 - Engineering
 - Construction
 - Management
 - Project controls
 - Safety
 - Quality assurance/quality control
 - Finance
 - Administration



Staying Connected

- Project website:
 - Project updates/announcements
 - Job summaries
 - Helpful hints
 - Sign-up GovDelivery
- Met Council website:
 - Current listing of job openings
 - Guides/videos to help navigate the hiring process

tion/Projects/Current-Projects/Southwest-LRT.aspx

west Transitway | Google Maps | Minnesota Public Radi | startribune.com News | Imported From IE | Metropolitan Council | Southwest LRT (@Sou...

About Us | News & Events | Data & Maps | Publications & Documents | Doing Business | Council Meetings | Contact Us | Employment

METROPOLITAN COUNCIL

COMMUNITIES | PARKS | TRANSPORTATION | WASTEWATER & WATER | HOUSING | PLANNING

SOUTHWEST LRT

Project Facts
Route
Stations
Fieldwork
Design & Engineering
Construction
Public Involvement
Meetings and Events
Environmental
Project Partners
Committees

SOUTHWEST LIGHT RAIL TRANSIT

METRO Green Line Extension - Eden Prairie to Downtown Minneapolis

The Southwest Light Rail Transit (LRT) project (METRO Green Line Extension) will operate from downtown Minneapolis through the communities of St. Louis Park, Hopkins, Minnetonka, and Eden Prairie, passing in close proximity to Edina. It will be part of an integrated system of transitways, including connections to the METRO Blue Line, the Northstar Commuter Rail line, bus routes and proposed future transitways. The total estimated project cost of \$1.858 billion will be funded through a mix of federal, state and local sources, with federal funds making up approximately half the total. At Target Field Station in Minneapolis, Green Line Extension trains will continue along the METRO Green Line, providing one-seat rides to the University of Minnesota, State Capitol area and downtown St. Paul.

ENEWSLETTER / TEXT

Subscribe to our newsletters, or text & email alerts.

Email

Enter Email or Phone #

SIGN UP

Latest News

Extending Tracks Issue 15: September 2016
9/27/2016
The September 2016 issue of the Southwest LRT Project newsletter.

METRO Green Line Extension (Sou...

Construction Professionals Career Fair



Construction Contractor Event

- Date: Dec 5
- Time: 2:00 – 4:30
- Location: Minnetonka Community Center
- Agenda:
 - Project Overview
 - DBE Overview
 - Bidding Process Overview
 - Contractor Mixer



More Information

Online:

www.SWLRT.org

Email:

SWLRT@metrotransit.org

Twitter:

www.twitter.com/southwestlrt

