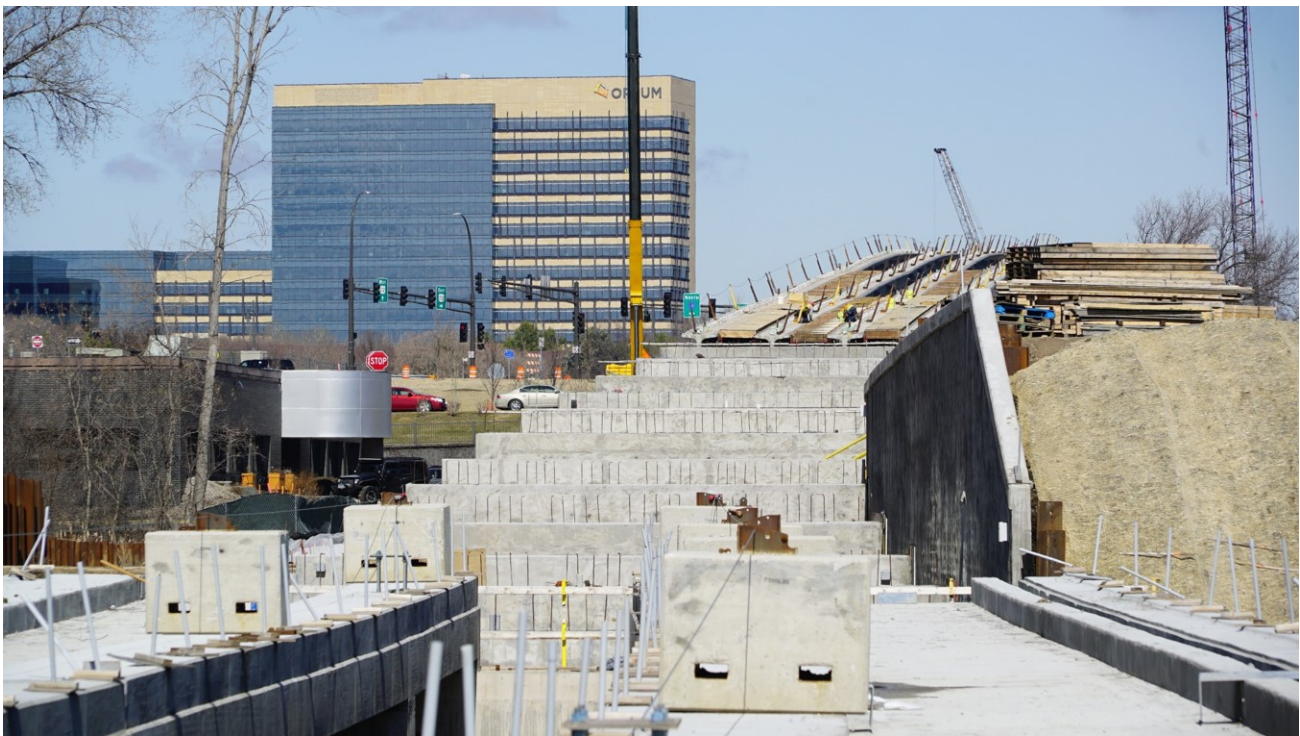


Spring Construction Underway

With warmer weather in the forecast, many sites along the Southwest LRT project that were quiet for the winter are now active. Expect crews working and moving materials throughout the corridor as this year’s construction season gets fully underway.

Weekly Construction Photo: Shady Oak Road LRT Bridge in Eden Prairie



With bridge beams recently placed, crews work to advance the deck of the Shady Oak LRT bridge in Eden Prairie. Looking north from the Golden Triangle Station.

[Eden Prairie](#)

Eden Prairie Construction: Map 1 of 2



SouthWest Station to Eden Prairie Town Center Station

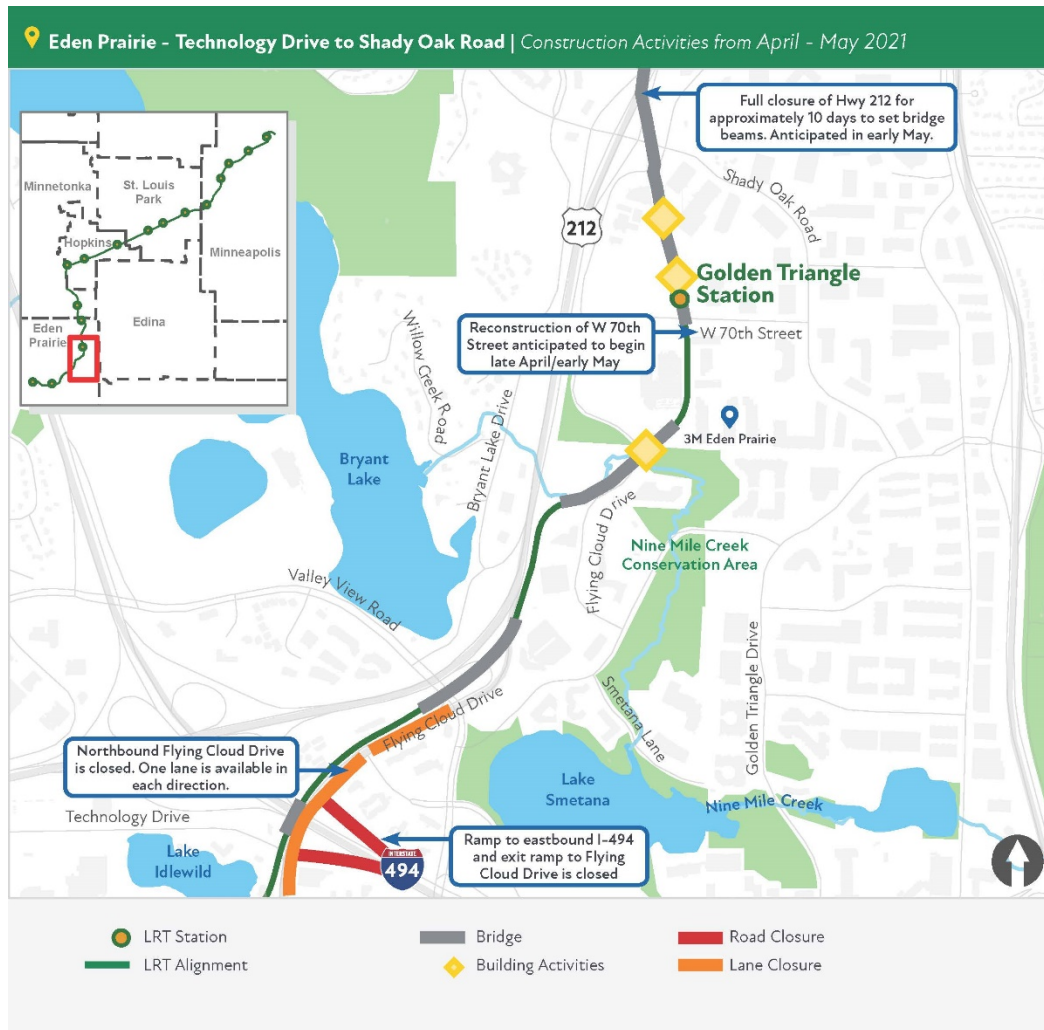
Construction Overview: At the SouthWest Station we are constructing a new park-and-ride ramp adjacent to the existing ramp and a combined bus and LRT station. Moving east, the Prairie Center Drive LRT Bridge extends from the SouthWest Station area over Technology Drive and Prairie Center Drive. Moving east, LRT will enter the Eden Prairie Town Center Station area.

Current activities to expect in this area:

- The right-turn lane on the eastbound Highway 212 ramp to Prairie Center Drive remains closed.
- The SouthWest station area remains a busy construction site with ongoing piling and concrete work.
- Work continues on the Prairie Center Drive as crews work on bridge walkways.

- For the week of April 12, northbound right lanes are closed on Prairie Center Drive from Singletree Lane to Technology Drive. An overnight closure of Prairie Center Drive from Singletree Lane to Technology Drive is anticipated on Wednesday, April 14 from 10:00 PM to 5:00 AM on Thursday, April 15.
- Sidewalks near the intersection of Prairie Center Drive and Technology Drive remain closed, please follow signage to ensure your safety. ([See the SouthWest pedestrian detour map](#)).

Eden Prairie Construction: Map 2 of 2



LRT Bridge at I-494 to Shady Oak Road

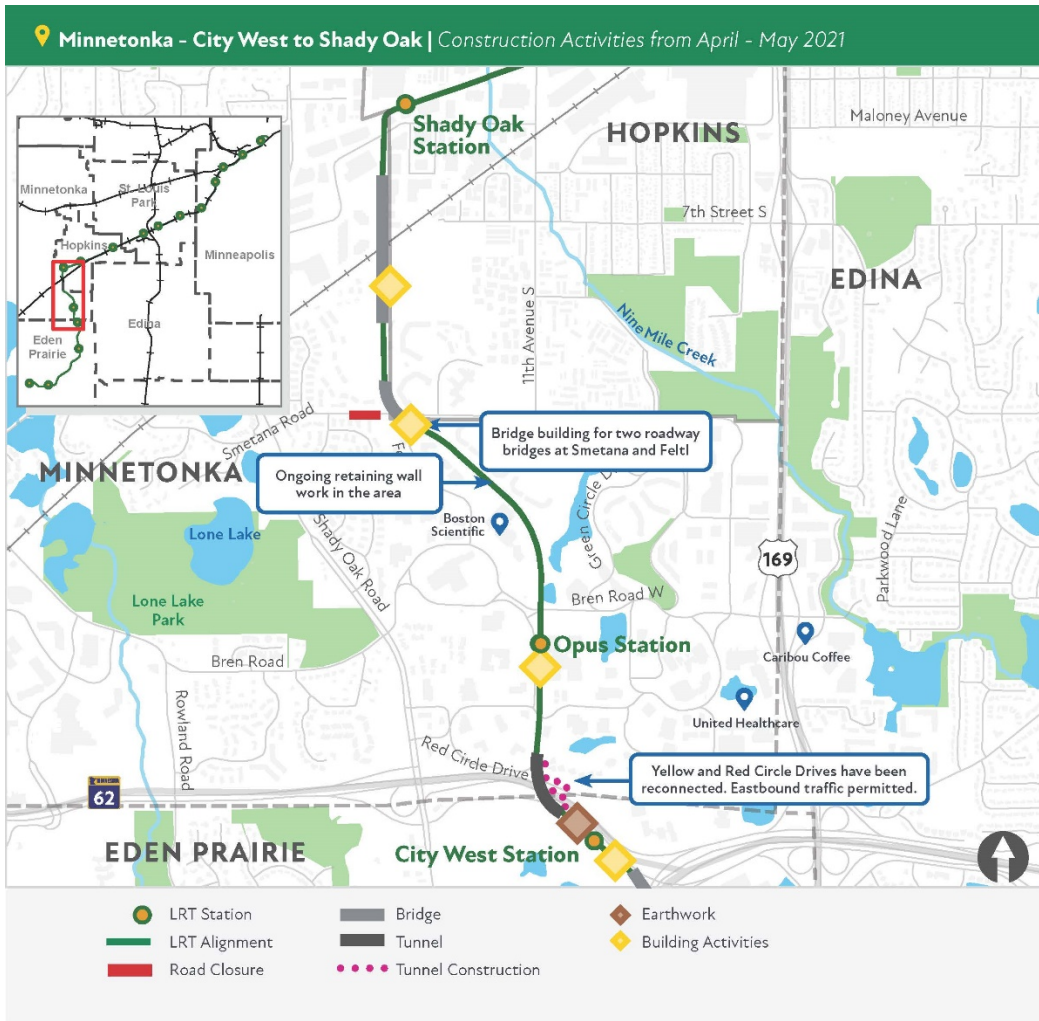
Construction Overview: In this portion of Eden Prairie, an LRT bridge will cross over I-494, parallel to Flying Cloud Drive; this bridge is almost complete. Flying Cloud Drive is being reconstructed and LRT track installed. LRT will travel on bridges over Flying Cloud Drive and Nine Mile Creek. The Golden Triangle Station is being constructed as well as an LRT bridge over Shady Oak Road and Highway 212.

Current activities to expect in this area:

- The I-494 off-ramp to Flying Cloud Drive has closed for the 2021 construction season. The I-494 on-ramp from Flying Cloud Drive is expected to remain closed through the summer.
- Traffic is reduced to one lane in both directions on Flying Cloud Drive between Town Center Place to Valley View Road through the summer. Intersections from Flying Cloud Drive to Technology Drive and Viking Drive will remain open, subject to intermittent, short-term lane reductions. Left turns in and out of Technology Drive at the Flying Cloud Drive intersection are prohibited through the summer.
- Crews continue to advance the deck of the Nine Mile Creek bridge, expect construction activities in the area.
- West 70th Street is expected to close early in May to advance LRT track work. This closure will last for most of the 2021 construction season.
- Crews are advancing the southern portion of the Highway 62 LRT tunnel and area retaining walls. Anticipate noise and vibration associated with installation of piling and sheeting between Highway 62 and southbound Highway 212.
- Expect crews working in the area of the Highway 62 westbound off-ramp to westbound Highway 212.

Minnetonka

Minnetonka Construction: Map 1 of 1



City West Station in Eden Prairie to Shady Oak Station in Hopkins

Construction Overview: The City West Station area continues with preparation work for retaining walls. Major elements in this segment include an LRT tunnel under Highway 62, the Opus Station, many large retaining walls, the Smetana/Feltl roadway bridges over LRT and the Hopkins/Minnetonka LRT Bridge ending at the Shady Oak Road Station.

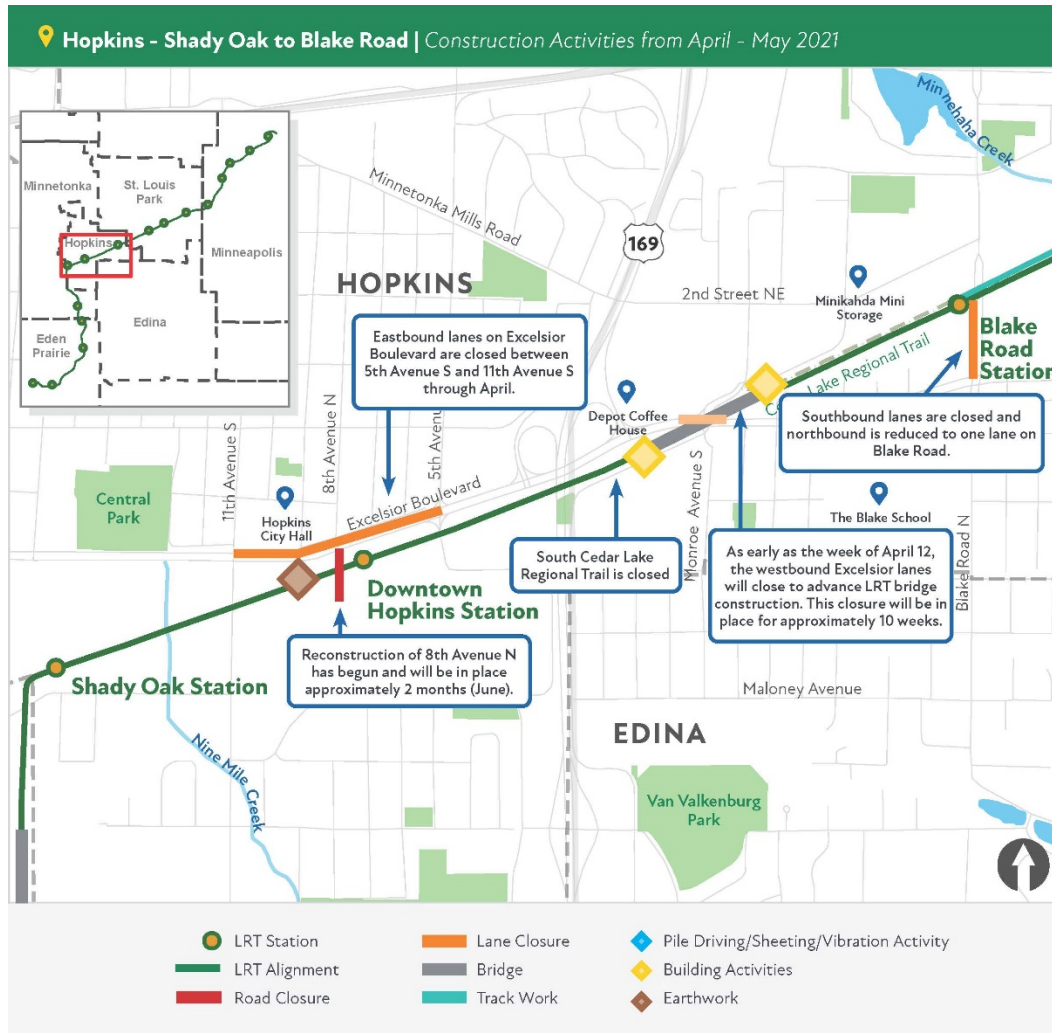
Current activities to expect in this area:

- Retaining wall work in Opus area continues near Yellow and Red Circle Drives, and north of Bren Road West to Smetana Road.
- The bike trail near Bren Road East and Red Circle Drive will close the week of April 12 as crews begin the construction of two pedestrian tunnels. Expect elevated noise and vibration as crews install sheeting.
- Smetana Road from Feltl Road to Nolan Drive remains closed until the end of summer. A bypass is in place east of the intersection of Smetana and Feltl Roads to accommodate local traffic. [See Minnetonka detour maps here.](#)

- Crews are working on Minnetonka-Hopkins LRT bridge piers and are installing sheeting to support excavation.

Hopkins

Hopkins Construction: Map 1 of 1



Shady Oak Road Station to Blake Road Station

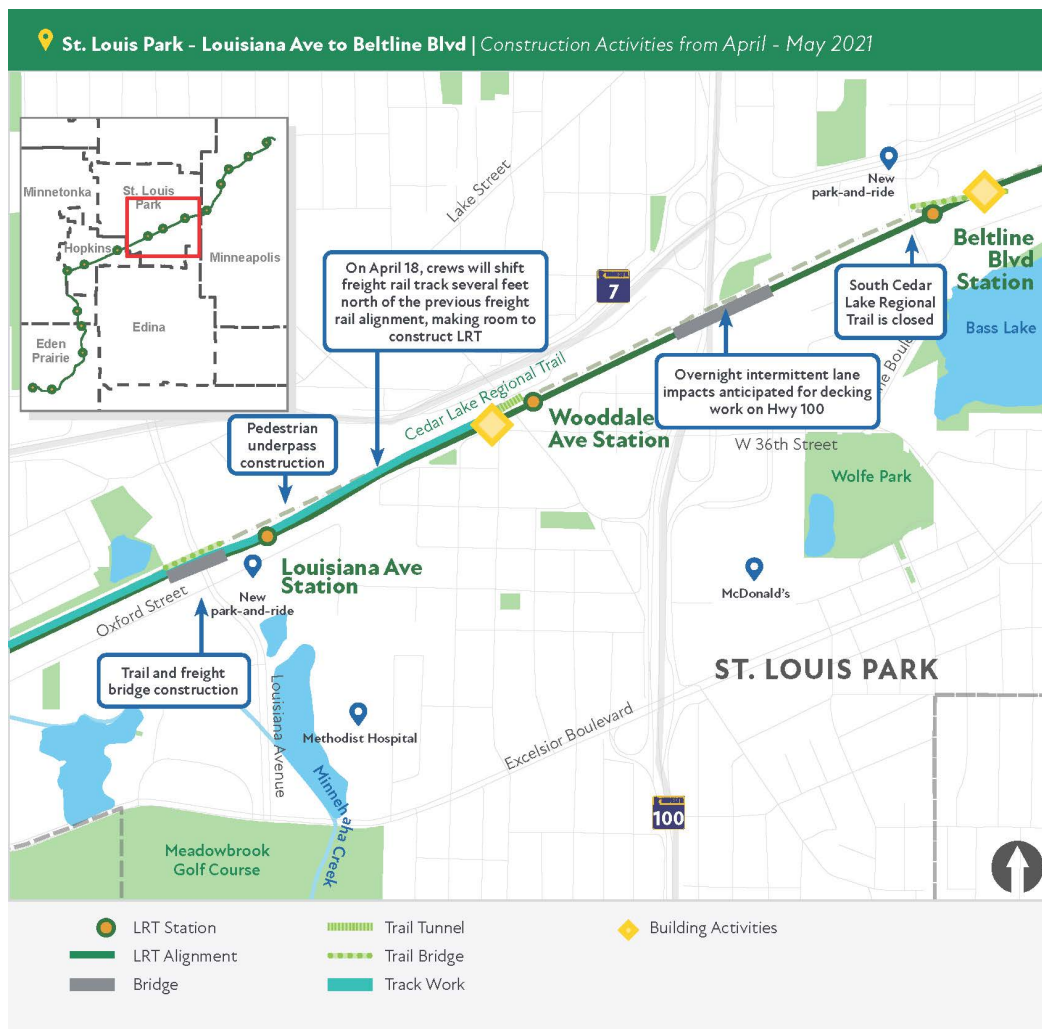
Construction Overview: There are three stations in Hopkins: Shady Oak Road, Downtown Hopkins and Blake Road. Major structures in Hopkins include an LRT bridge over Excelsior and a regional trail underpass at Blake Road. In addition to LRT track construction there is also freight rail and regional trail work in the area. There are multiple LRT and freight railroad crossings at roadways.

Current activities to expect in this area:

- 8th Avenue South is closed at Excelsior Boulevard. The eastbound lanes of Excelsior Boulevard are closed through April between 11th Avenue and 5th Avenue. [See detour map.](#)
- Crews are conducting earthwork for stormwater management and installing foundations for the Overhead Catenary System (OCS) poles between 11th Avenue South and 5th Avenue South.
- The reconstruction of the regional trail underpass at Blake Road North is scheduled to resume April 12. Southbound lanes on Blake Road will close at 2nd Street. [See detour map](#)
- Crews resumed the construction of the cantilevered structure for the LRT bridge over Excelsior Boulevard. A full closure of westbound Excelsior Boulevard will be put in place on Monday, April 12 and traffic will remain detoured for approximately 10 weeks. [See detour map](#)

St. Louis Park

St. Louis Park Construction: Map 1 of 1



Louisiana Avenue to Beltline Boulevard

Construction Overview: Like in Hopkins, the project includes the construction of LRT track, freight rail track, and the regional trail. There are also three stations in St. Louis Park: Louisiana Avenue, Wooddale Avenue and Beltline Boulevard. Structures in this area include LRT and freight rail bridges over Louisiana Avenue, a connection between freight lines, a pedestrian/trail underpass east of Louisiana Avenue, freight, LRT and trail bridges over Minnehaha Creek, a regional trail underpass at Wooddale Avenue, freight, LRT and trail bridges over Highway 100 and a regional trail bridge crossing over Beltline Boulevard.

Current activities to expect in this area:

- Deck work for the light rail bridge over Highway 100 is scheduled for overnight work on Monday, April 12 and Tuesday, April 13. Lane closures along Highway 100 are expected while crews advance decking activities. The on and off- ramps to Highway 7 will also be closed.
- On April 18, crews will shift the remaining freight rail tracks from Wooddale Avenue in St. Louis Park to Blake Road in Hopkins to newly constructed freight rail track.
- Crews are working on various elements of the Beltline Boulevard Regional Trail bridge. The bridge is nearly complete.

[Minneapolis](#)

Minneapolis Construction: Map 1 of 5



Chowen Avenue to Cedar Lake Parkway

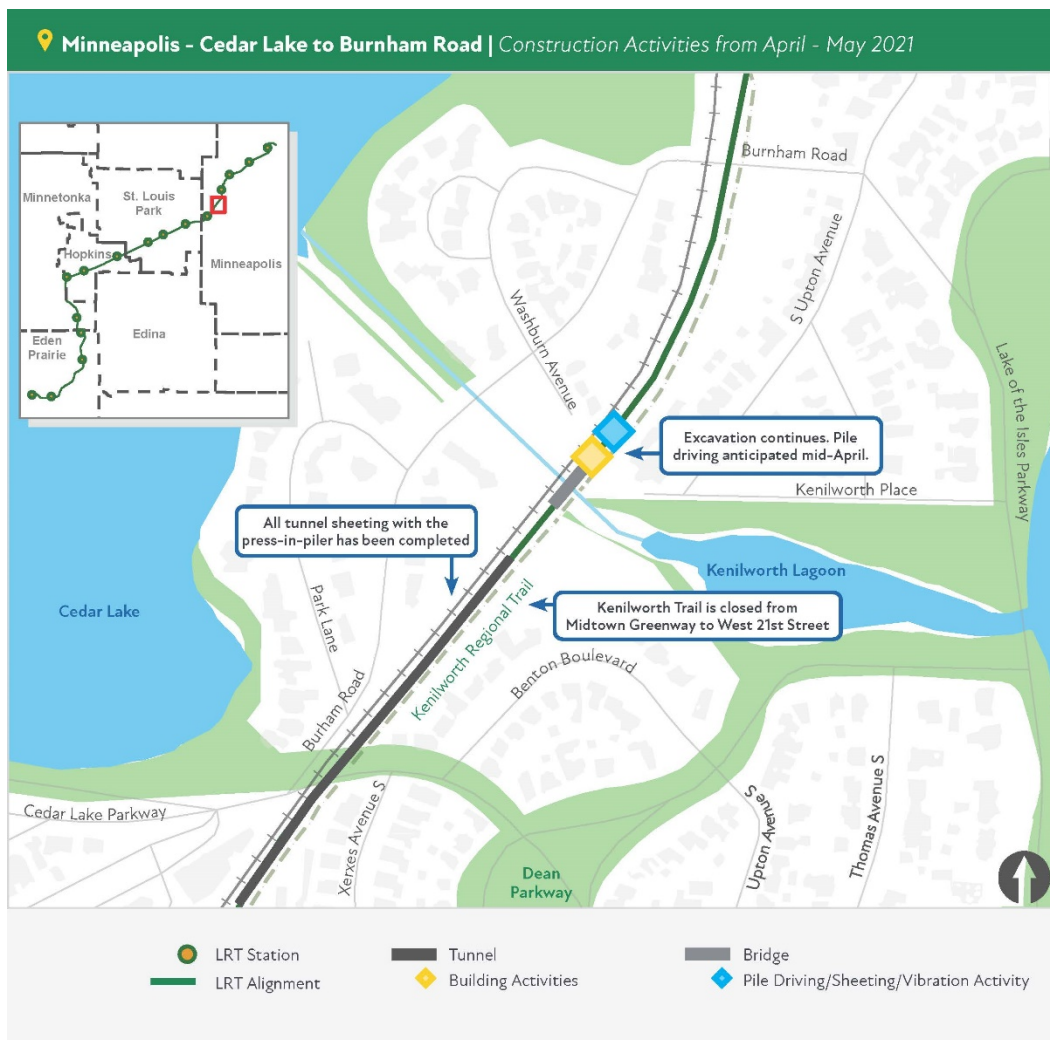
Construction Overview: In addition to the West Lake Street Station, crews will be reconstructing the Chowen/Abbott roadway connection. The LRT tunnel is being constructed in this area, running between the West Lake Street Station and the Cedar Lake Channel. To complete work in this area there is also freight rail infrastructure and trail facilities.

Current activities to expect in this area:

- Temporary trails near Chowen Avenue and Lake Street remain in place. For your safety and the safety of our crews, please following signage for the temporary trail and stay clear of the work zone.
- Construction vehicles will continue to use Abbott Avenue to access the LRT corridor throughout work hours.
- Excavation activities and sheeting installation is expected to begin at the West Lake Street Station site in mid- to late-April.

- Excavation activities continue for the Kenilworth LRT Tunnel, progressing in the direction of Cedar Lake Parkway. Continue to expect construction equipment hauling materials through the corridor.

Minneapolis Construction: Map 2 of 5



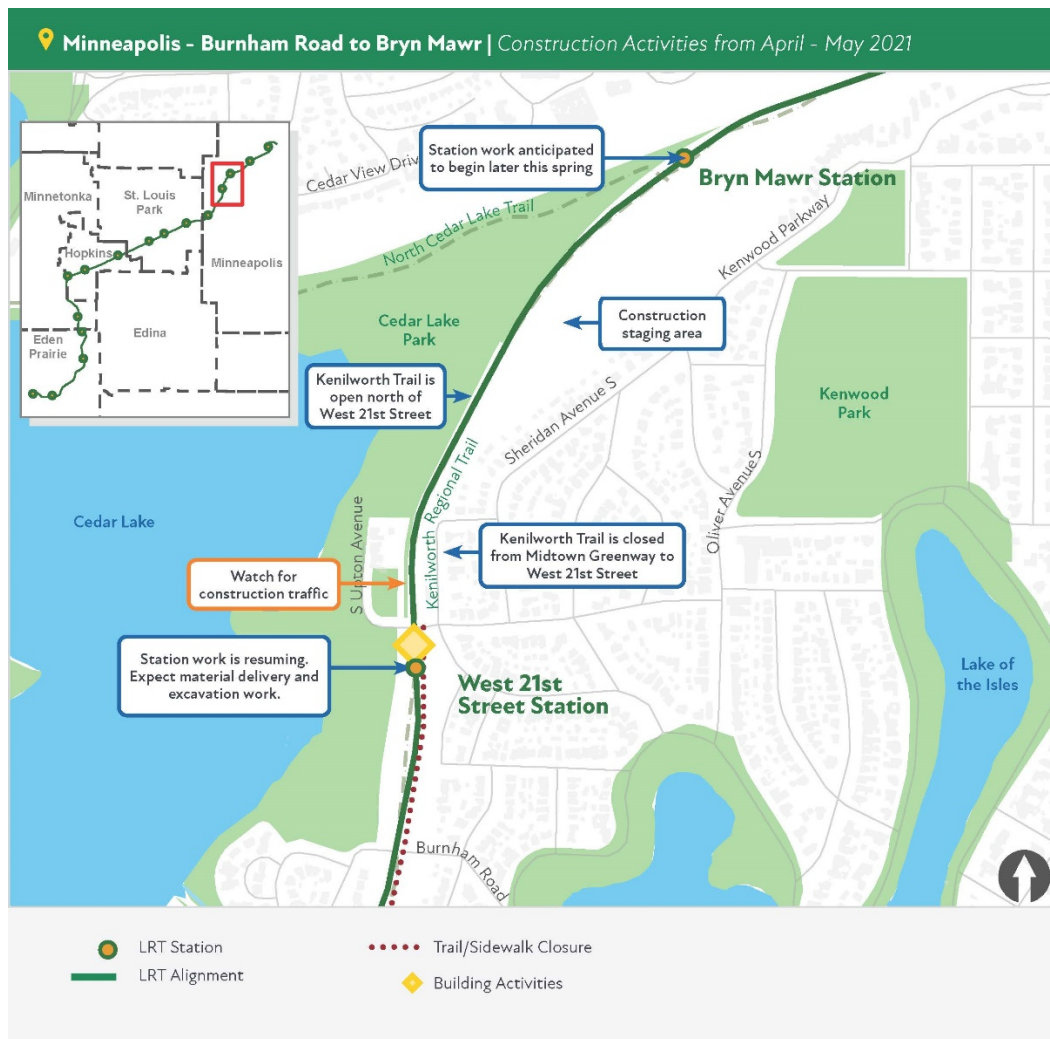
Cedar Lake Parkway to Burnham Road

Construction Overview: The LRT tunnel continues in this segment. Other elements include the construction of retaining walls (complete), and freight, LRT and trail bridges over the Cedar Lake Channel.

Current activities to expect in this area:

- Truck traffic and noise from moving materials to and from laydown areas.
- LRT bridge construction at the Cedar Lake Channel has resumed. Excavation is ongoing and pile driving for the north bridge abutment is anticipated to start the week of April 12. Pile driving activities are expected to last about two weeks.

Minneapolis Construction: Map 3 of 5



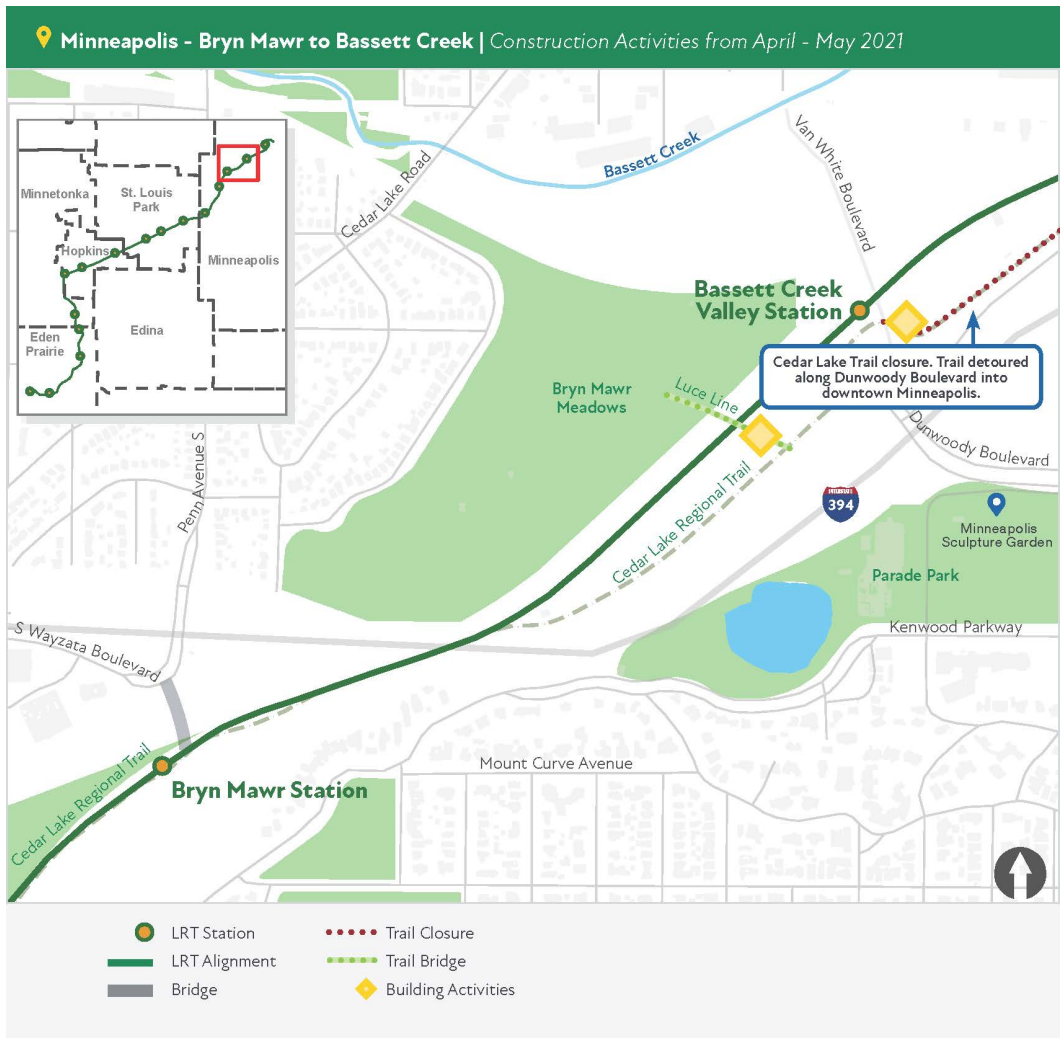
Burnham Road to Bryn Mawr Station

Construction Overview: In addition to the LRT, freight rail and trail construction, this area has two stations: West 21st Street and Bryn Mawr. The Bryn Mawr Station includes a pedestrian bridge that will extend over the freight tracks from the bluffs to the station platform.

Current activities to expect in this area:

- Truck traffic and noise from moving materials to and from laydown areas.
- Work on the 21st Street Station has resumed starting with excavation and concrete work. The West 21st Street Station will be under construction throughout 2021.

Minneapolis Construction: Map 4 of 5



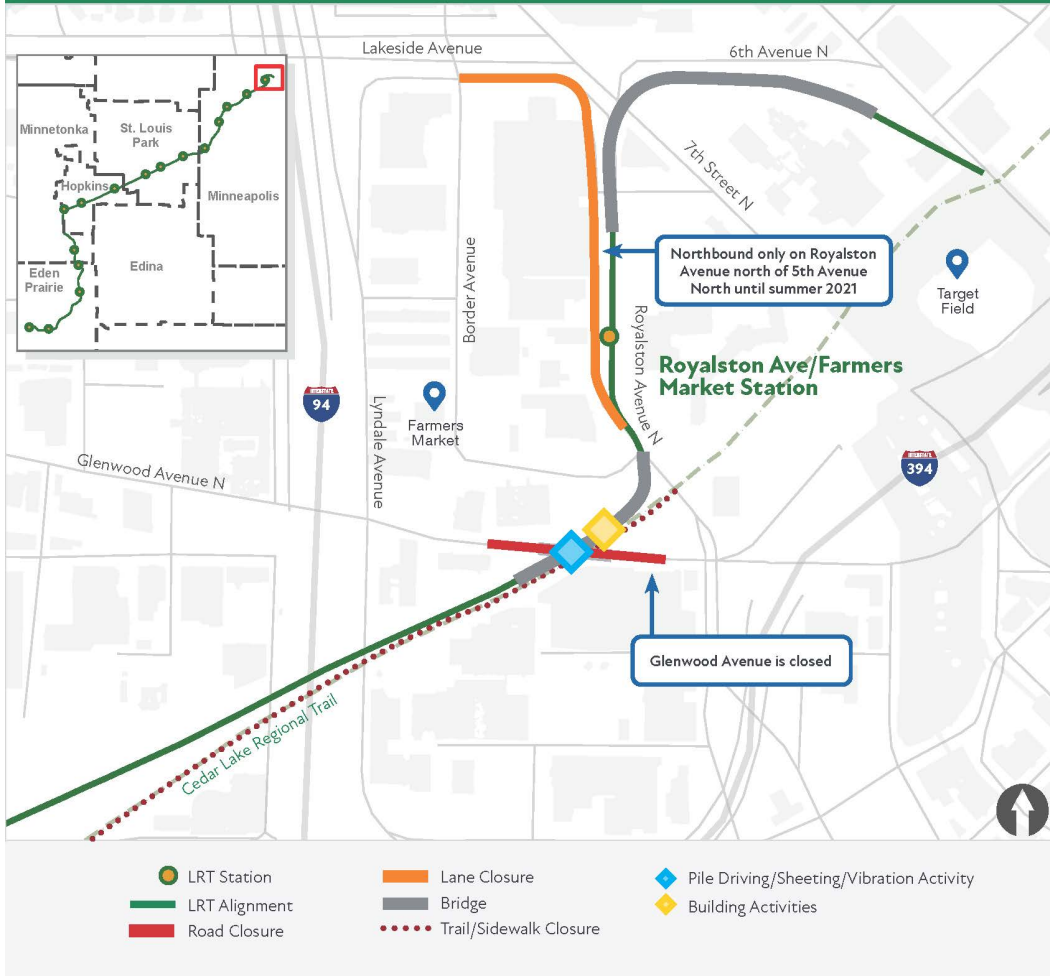
Bryn Mawr Station to Bassett Creek Valley Station Area

Construction Overview: There are two stations serving residents in this area; Bryn Mawr Station and the Bassett Creek Valley Station. In addition, area construction includes LRT track, trails and the corridor protection wall.

Current activities to expect in this area:

- Truck traffic and noise from moving materials to and from Linden Yards.
- Concrete production in Linden Yards.

Minneapolis Construction: Map 5 of 5



Glenwood Avenue to Target Field Station

Construction Overview: LRT will cross a new Glenwood Avenue bridge at the roadway grade. To make that happen three bridges need to be constructed, freight rail shifted, and extensive retaining walls built. This area will see the development of the Royalston Avenue/Farmer’s Market Station, an LRT bridge crossing over North 5th Avenue and North 7th Street and LRT connecting to the Target Field Station. The Holden/Royalston/Border roadway loop will also be reconstructed with improvements.

Current activities to expect in this area:

- Construction activities to advance the LRT bridge at Glenwood Avenue continues. Glenwood Avenue between Lyndale Avenue North and North 12th Street remains closed. [See detour map here.](#)
- Along Royalston Avenue, work to advance retaining walls will resume with concrete forming and earthwork.

- The southbound travel lane on Royalston Avenue from North 5th Street to Holden Street is closed; the closure will be in place until summer 2021. Business access is available via the northbound lane. [See the roadway impact map here.](#)

Regional Trails

Minnesota River Bluffs Regional Trail

The Minnesota River Bluffs Regional Trail in Hopkins is closed between Shady Oak Road and 5th Avenue South.

[See detour map here.](#)

- The section between Shady Oak Road and 11th Avenue South is closed due to storm sewer construction activities. This portion of the trail is closed until 2022.
- The section between 11th Avenue South and 5th Avenue South is closed 2022.

South Cedar Lake LRT Trail

The South Cedar Lake Trail from just east of the North Cedar Lake Trail connection in Hopkins to France Avenue in St. Louis Park is closed until 2022. The South Cedar Lake Trail will remain open between France Avenue in St. Louis Park and Kenilworth Trail/Midtown Greenway intersection in Minneapolis. The Midtown Greenway will remain open. Currently, cross streets remain open to automobiles, bikers and pedestrians. [See detour maps here.](#)

Kenilworth Trail Closure

The Kenilworth Trail is closed in Minneapolis at the intersection with the Midtown Greenway to just south of West 21st Street. We are currently assessing the tunnel schedule which impacts the opening of this trail segment and we will provide an update when the schedule is known. Access for automobiles, bikers and pedestrians remains open at Cedar Lake Parkway and at West 21st Street. [See detour map here.](#)

North Cedar Lake Trail in Minneapolis

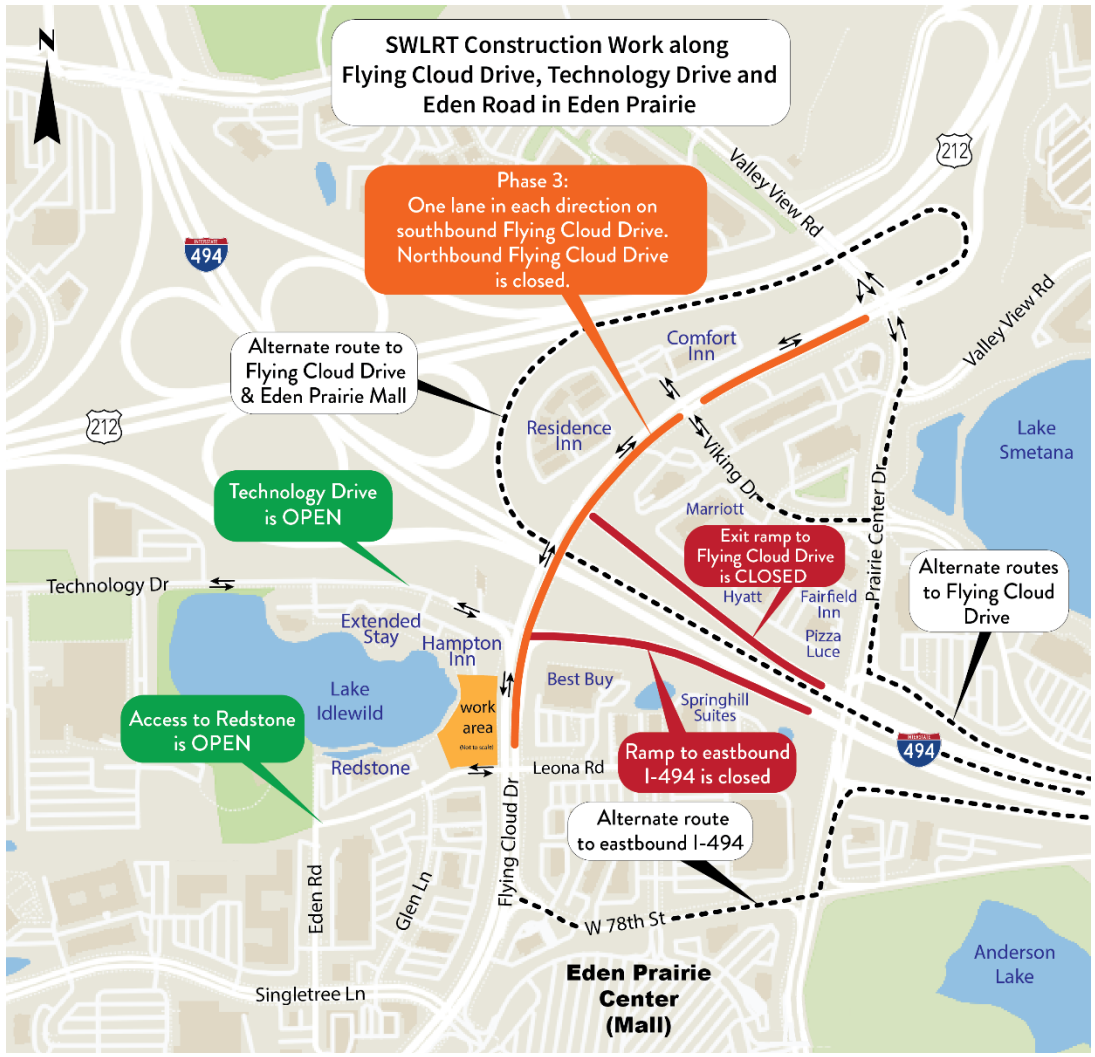
The North Cedar Lake Trail in Minneapolis from Linden Yards located west of Van White Boulevard to east of Royalston Avenue is now anticipated to be closed until 2022. [See detour maps here.](#)

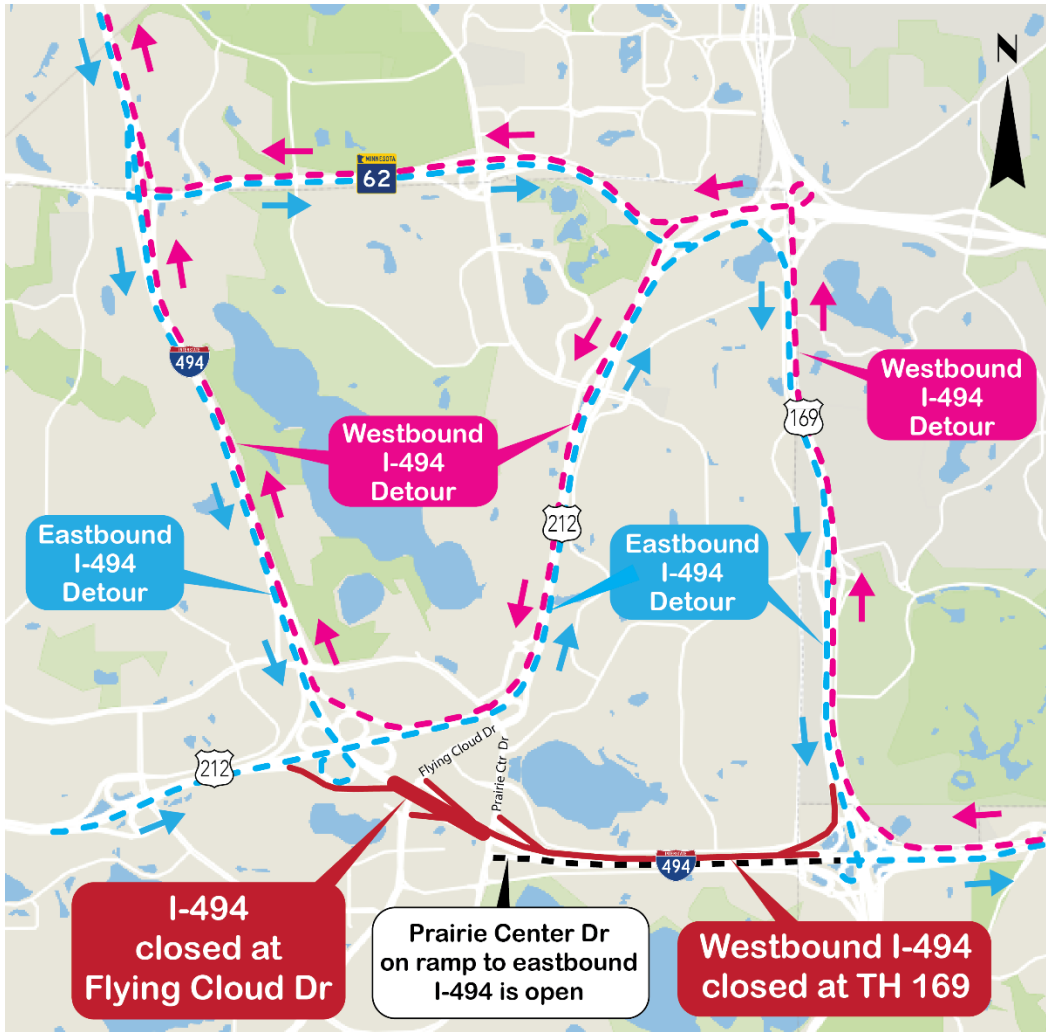
Please note, construction vehicles cross the trail as they enter and exit staging areas. Construction vehicles yield to trail users but please be aware that you may encounter construction traffic in this area.

SouthWest Transit Station Pedestrian Detour in Eden Prairie

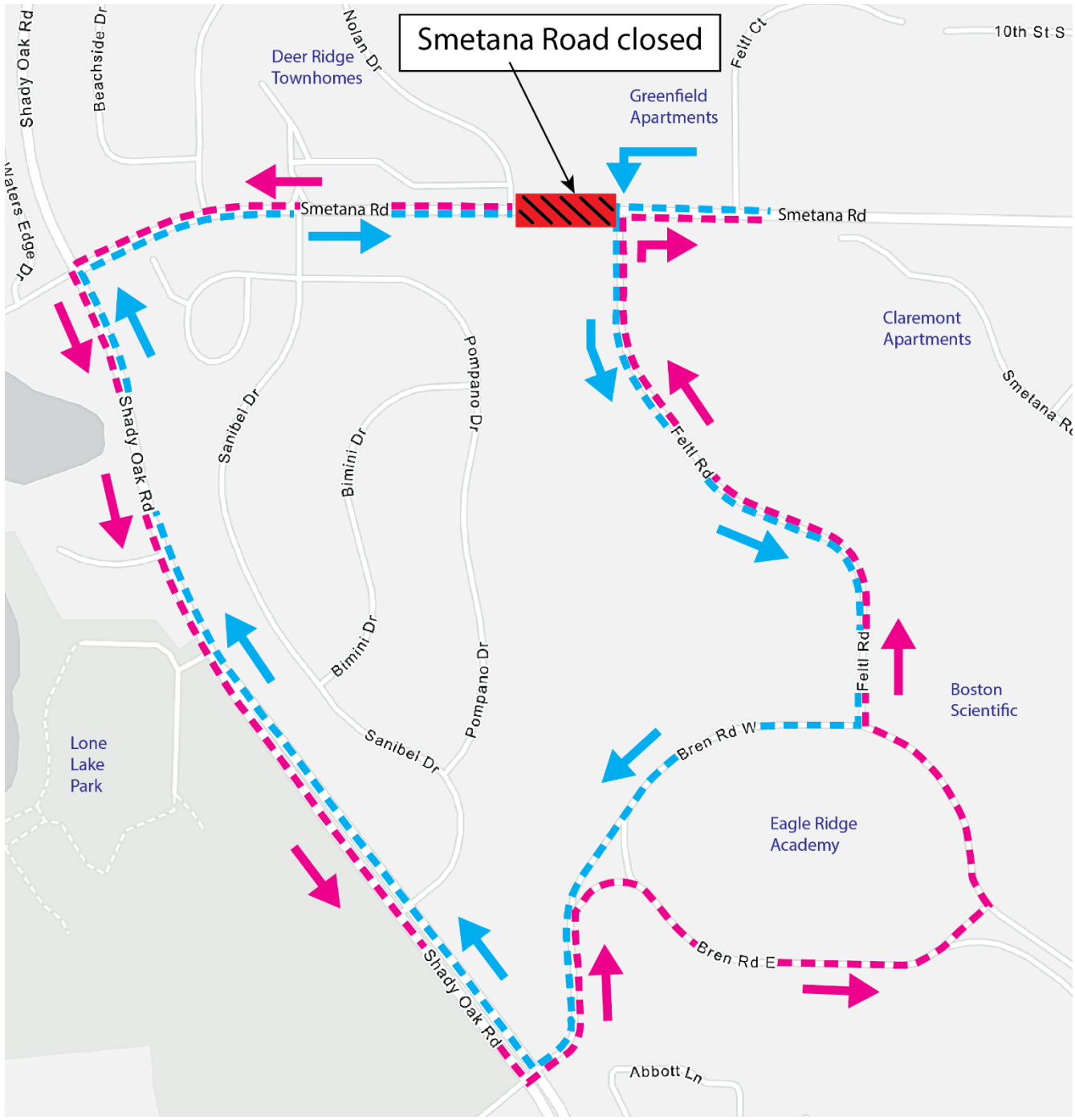


Flying Cloud Drive & Highway 494 Ramps in Eden Prairie

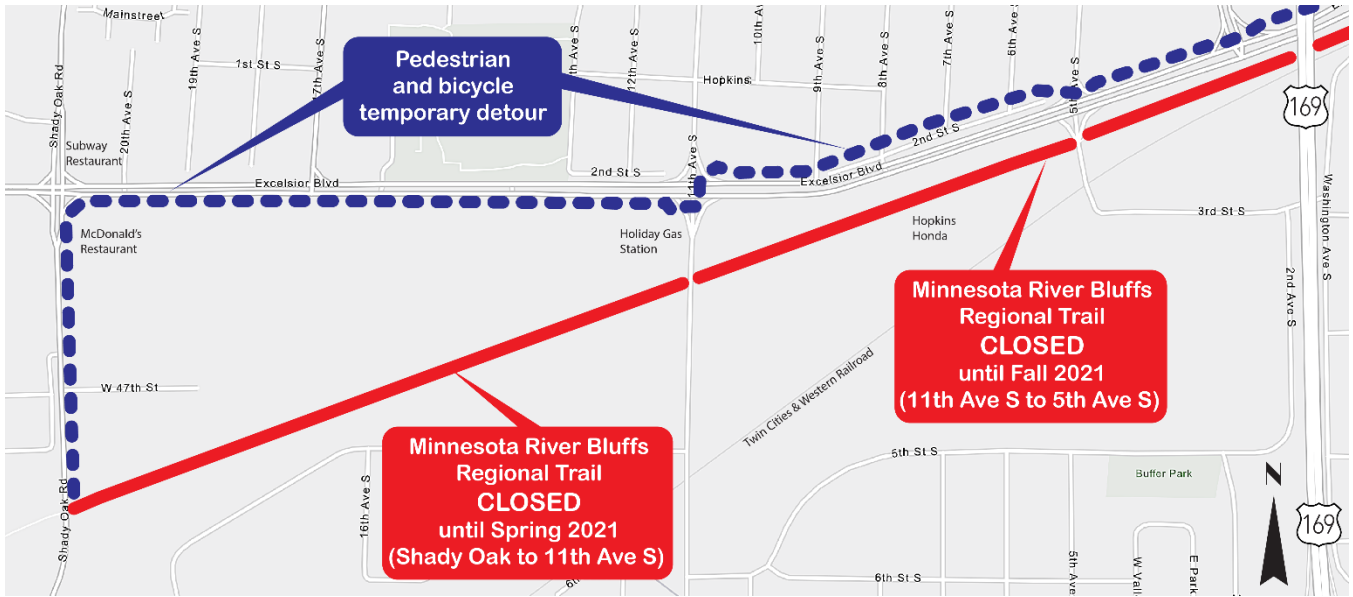




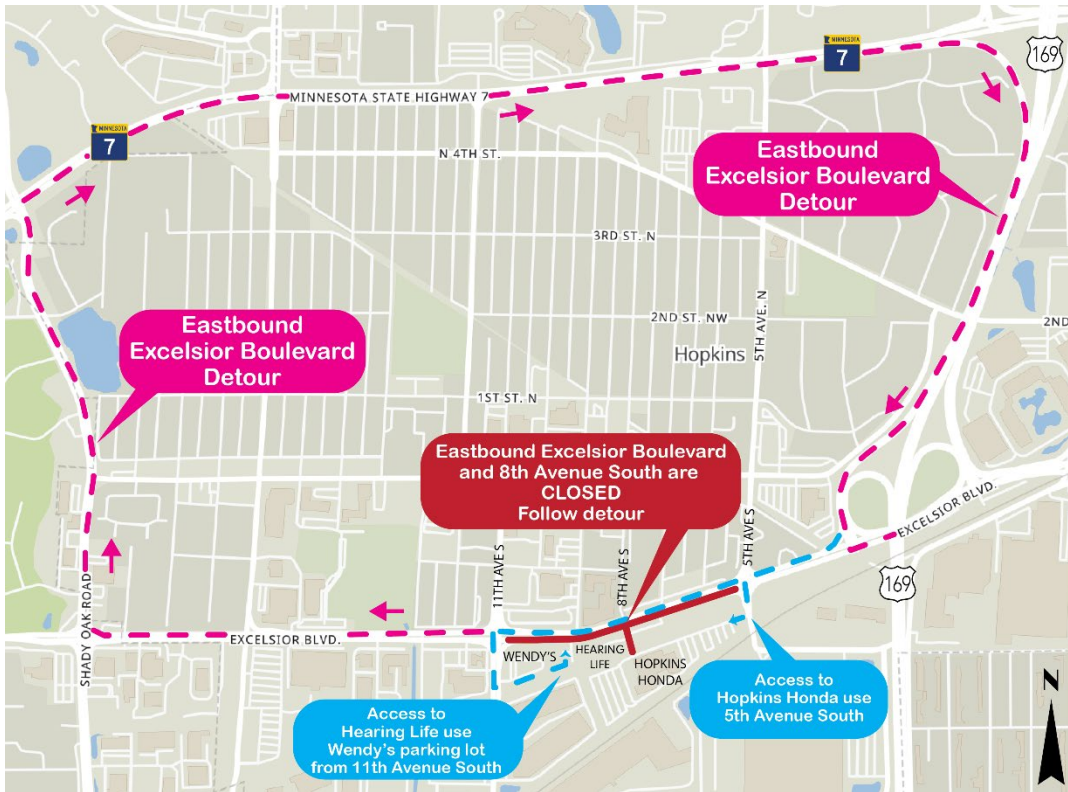




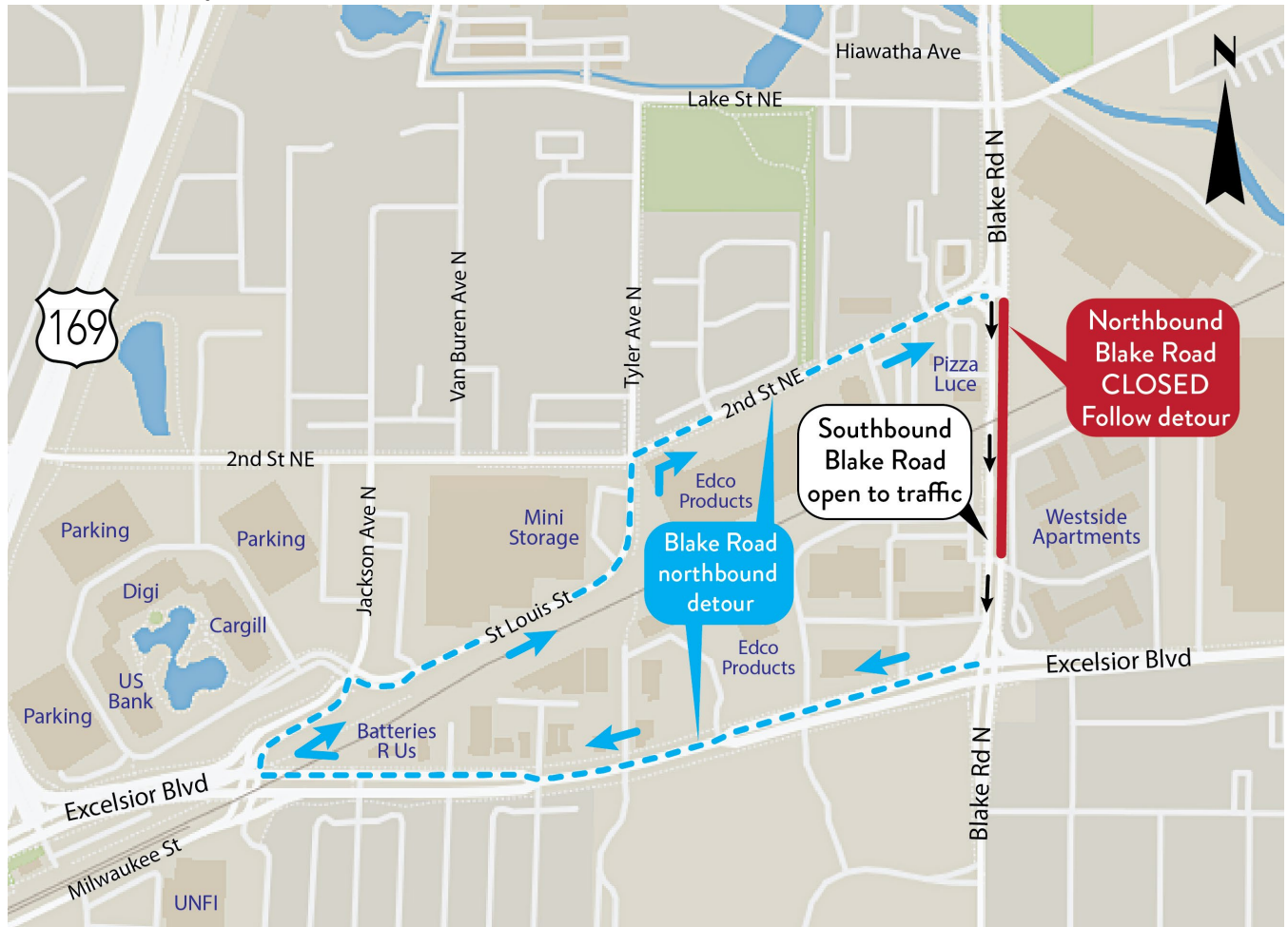
Minnesota River Bluff Trail from Shady Oak Road to 5th Avenue Detour



Upcoming 8th Avenue & Excelsior Blvd in Hopkins



Blake Road in Hopkins

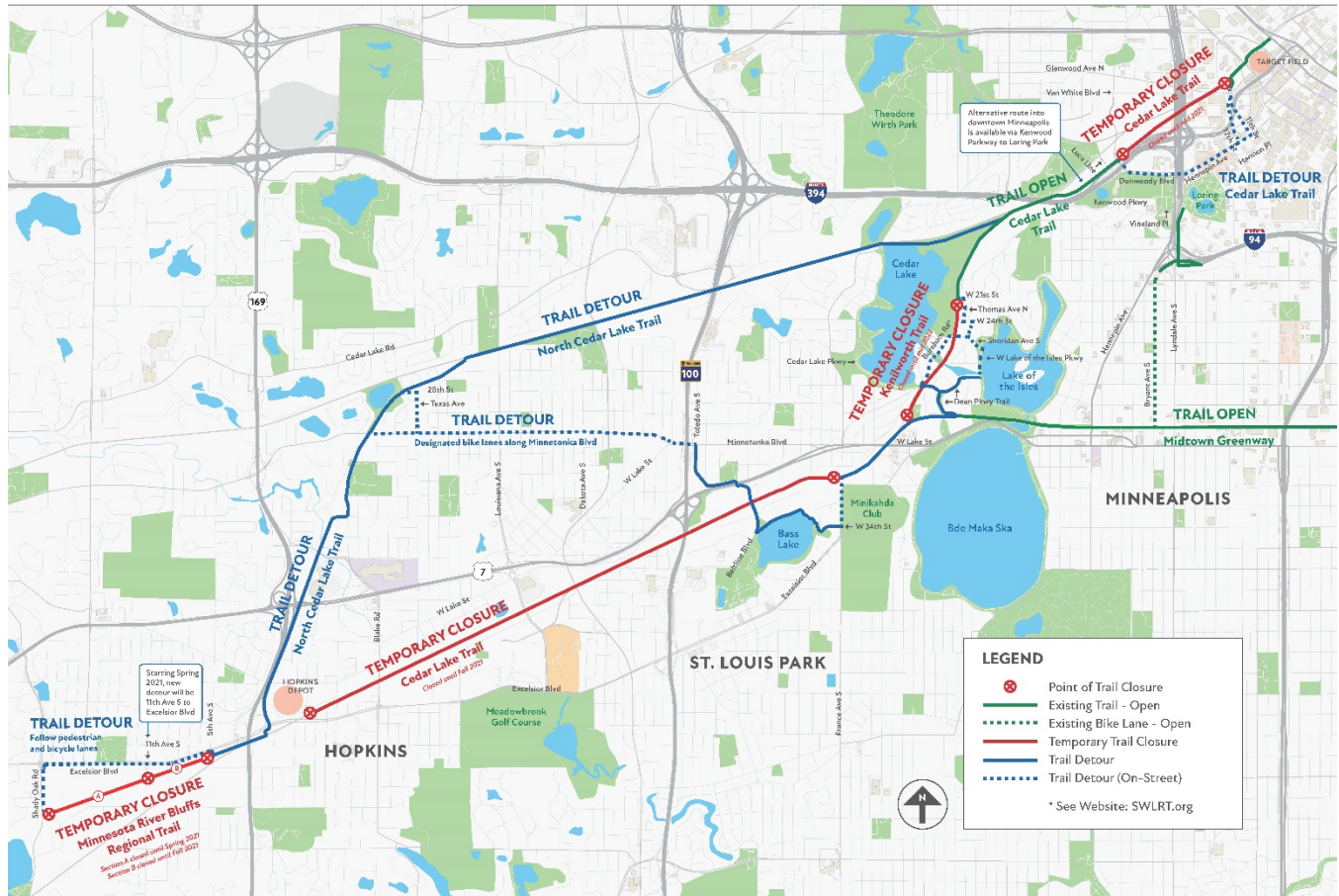


Blake Road in Hopkins



TRAIL DETOUR

MORE DETAILS: SWLRT.ORG



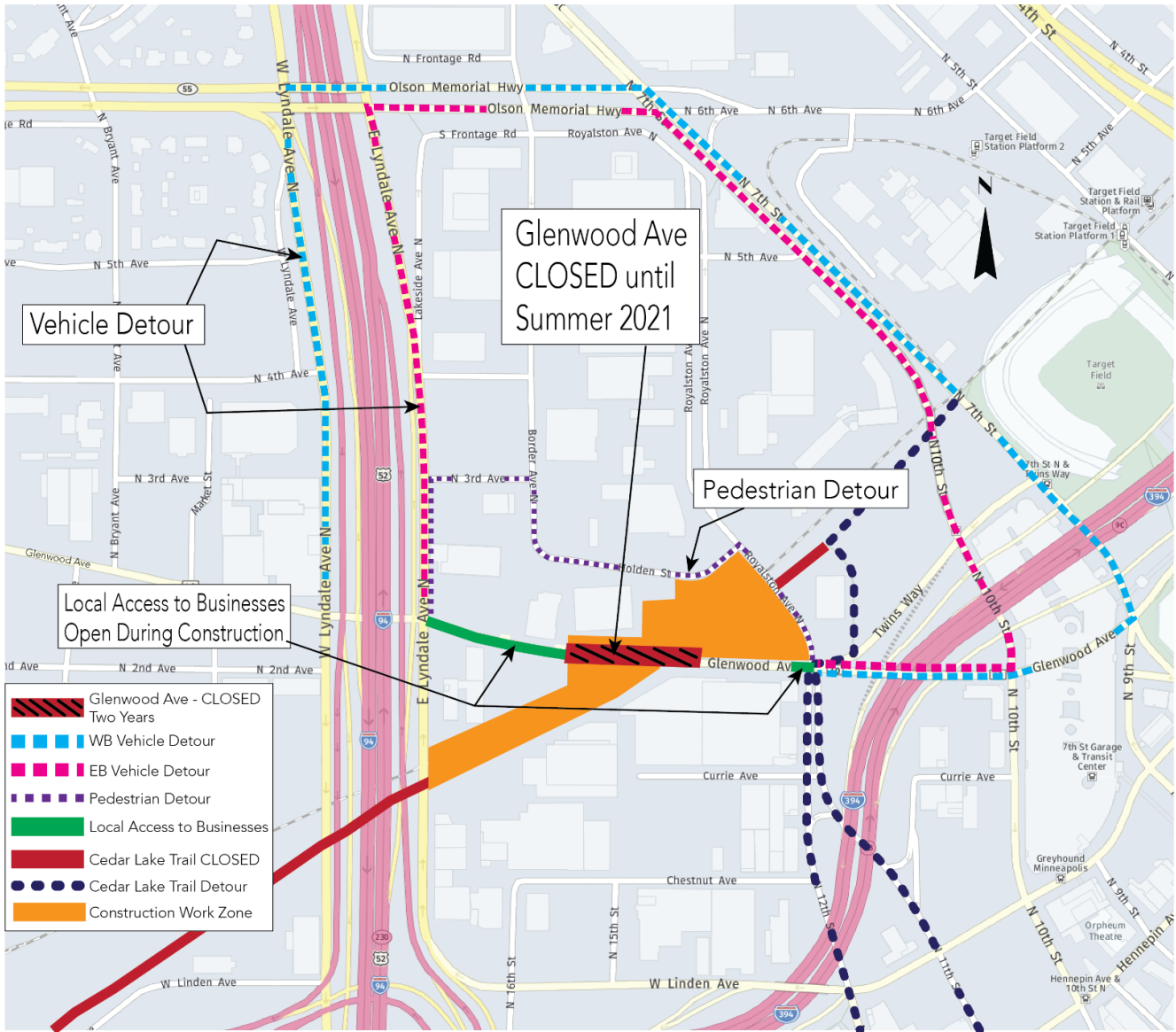
CEDAR LAKE REGIONAL TRAIL

TEMPORARY ALIGNMENT

MORE DETAILS: SWLRT.ORG



Glenwood Avenue Detour in Minneapolis



Royalston Avenue Detour in Minneapolis

