

SOUTHWEST

Green Line LRT Extension



Civil Construction Pre-Bid and DBE Meet and Greet

November 13, 2017



Today's Topics

- Welcome/Introductions
- Bid Requirements
- Review of DBE Participation
- Overview of Project Specifications
- DBE Meet and Greet



Bidding Requirements

Auburn Dees, IFB Administrator

Nothing said at this meeting today changes the written requirements of the IFB; any changes will be made by written addendum.

Any addenda will be posted on the QuestCDN site. Registered document holders will receive an automated email notification when an addendum is issued.

Bidders must acknowledge all addenda on the Bid Form.

Bid Requirements

- Questions due: 10 days prior to the Bid Due Date
 - <https://bit.ly/swlrt-civil-rebid> (e-Builder) for technical questions
 - auburn.dees@metc.state.mn.us for bidding and contract requirements
- Bids due: January 9, 2018 at 2:00 PM Local Time

Submitting Questions

Questions from Potential Bidders for SWLRT Civil Project

Potential Bidder Question (PBQ)

Start Process

* Name:	<input type="text"/>
* Email Address:	<input type="text"/>
* Company:	<input type="text"/>
* Question:	<input type="text"/>
* Drawing Reference:	<input type="text"/>
* Specification Reference:	<input type="text"/>

Schedule of Changes

00008 SCHEDULE OF CHANGES

<p>All Addenda issued during the original solicitation (15P307) have been incorporated into this IFB 15P307A (Rebid). Changes to Civil Construction Bid Documents since 8/15/2017 (new for solicitation 15P307A) are outlined below. Please note this document does not remove the Contractor's responsibility to review all Contract Documents in this solicitation.</p>		
Specification number and title		Description of change
INTRODUCTORY INFORMATION		
00000	Cover Page	Updated for new procurement
00005	Certifications Page	Updated certifications for revised specifications
00010	Table of Contents	Updated with revision version #
00150	Advertisement for Bids	Included new note for pre-bid pre-registration; Inserted Subcontractor Restriction language with list of excluded Subcontractors
BIDDING REQUIREMENTS		
00200	Instructions to Bidders	Inserted Subcontractor Restriction language with list of excluded Subcontractors
		Inserted new bid submittal for Document 00475 Restricted Subcontractor Certification
		Inserted new link to submit bidder questions
00300	Information Available to Bidders	Added information for Illustrative design plans (100% roll plots)
00410	Bid Form	Increased mobilization bid item from \$20M to \$24M
		Inserted a new bid item for payment and performance bonds

Bid Requirements

- Project Completion Dates and Liquidated Damages
 - 00520 Contract Agreement
 - Specifications Section 01 10 00 Summary
- 00700 General Conditions
 - Insurance Requirements Article 5
- 00711 and 00800 Supplemental Conditions

Bid Requirements

- 00860 Prevailing Wage Requirements
 - State of Minnesota Highway and Heavy
 - State of Minnesota Truck Rental Rates
 - Davis Bacon
 - Heavy for Tunnel Construction Activities
 - Highway for Remainder of Work

Bid Requirements: 2.1 Packaging of Bids

2.1 PACKAGING OF BIDS

- A. The bid package consists of the following documents:
1. **Document 00410 Bid Form**
 2. **Document 00440 Bid Bond** or other form of Bid Security
 3. If the amount of the Bid exceeds \$100,000, either: 1) a currently-effective Affirmative Action Certificate of Compliance, or 2) **Document 00450 Affirmative Action Certification Statement**
 4. If the amount of the Bid equals, or exceeds, \$500,000, **Document 00451 Equal Pay Certification Statement**
 5. If the amount of the Bid exceeds \$25,000, **Document 00457 Certification Regarding Debarment, Suspension, Ineligibility and Voluntary Exclusion (FTA or PFA Funding)**
 6. If the amount of the Bid exceeds \$100,000, **Document 00460 Buy America Certification (FTA Funding)**

Bid Requirements: 2.1 Packaging of Bids

7. If the amount of the Bid equals, or exceeds, \$100,000, **Document 00470 Lobbying Restriction Certification (FTA or PFA Funding)**
8. **Document 00475 Restricted Subcontractor Certification**
9. **Document 00485 Disadvantaged Business Enterprise Information and Certifications (FTA Funding with Goal)**
10. If the amount of the Bid exceeds, \$50,000, **Document 00495 Responsible Contractor Verification and Certification of Compliance and Attachment A-1, First-Tier Subcontractors List**
11. **Document 00885 Workforce Inclusion Commitment & Plan Part A – Certification**

Disadvantaged Business Enterprise Program

**Gary Courtney, Senior Equal Opportunity Consultant
Office of Equal Opportunity**

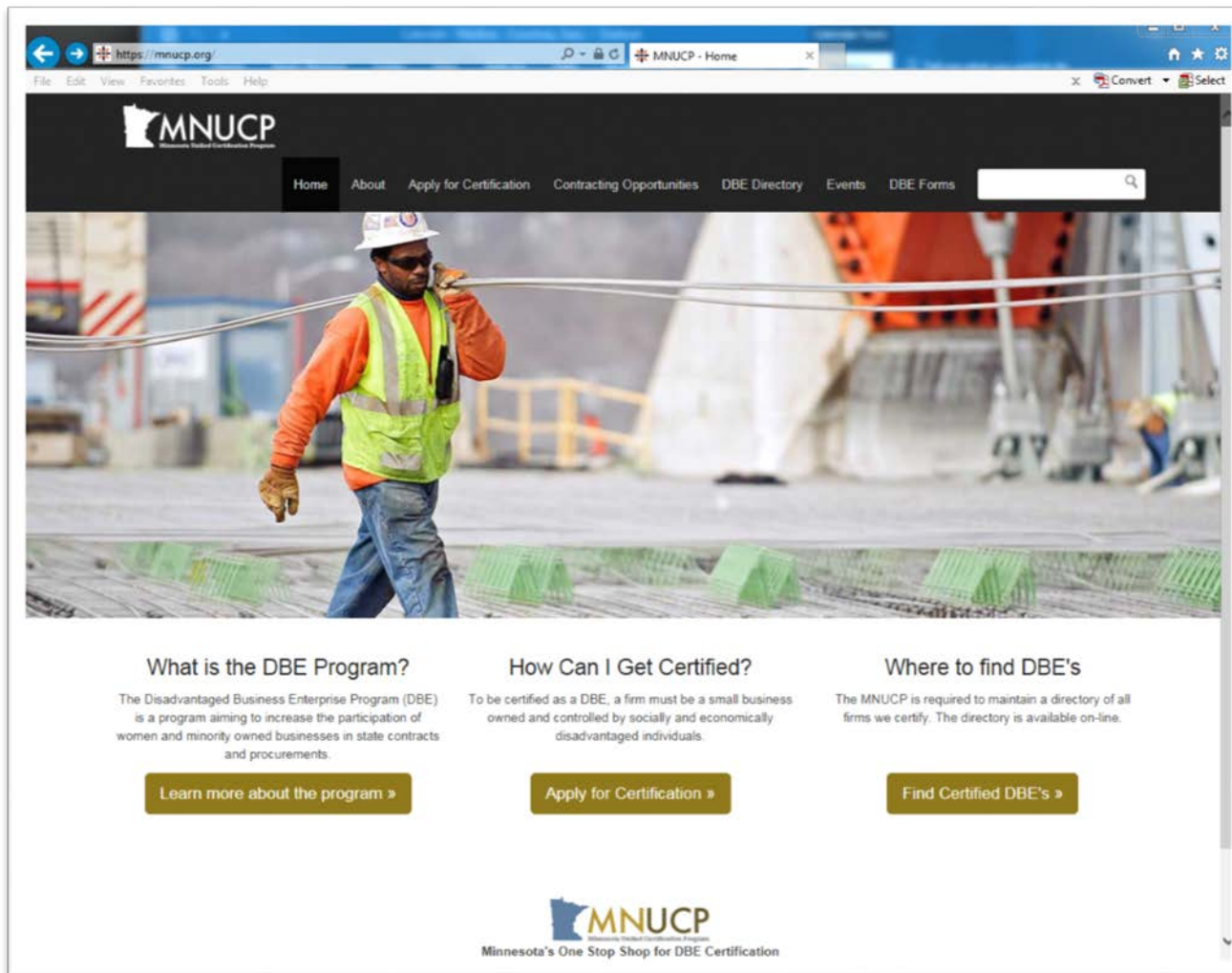
What is the DBE Program?

- Disadvantaged Business Enterprise
- Federal Equal Opportunity Program
- Any recipient of federal DOT funds
- Small business subcontracting goals



What is a DBE Firm?

- Small business at least 51% owned by, and controlled by, a socially and economically disadvantaged individual
- Subject to personal net worth cap and SBA size standards
- Certification through the Minnesota Unified Certification Program



Directory of firms available at:

www.mnucp.org

SWLRT Civil Construction

- 16% DBE participation goal
- Contractor must demonstrate at time of bid “Good Faith Effort” (GFE) toward meeting the goal by either:
 - Committing to meet or exceed the participation goal
< or >
 - Documenting all GFE steps taken prior to time of bid

Commercially Useful Function & Counting

- DBE firms must perform a “Commercially Useful Function” (CUF):
 - Case by case determination
 - CUF determination performed both at bid evaluation and during monitoring phase
- DBE counting
 - Supplier participation counted at 60%
 - Credit counting rules specific to trucking firms
 - Only work performed by the firm itself and its employee can count towards the goal

DBE Bid Forms

- 00485 Disadvantaged Business Enterprise Commitments & Good Faith Efforts Form
- Part A: Commitments (due at time of bid)
- Part B: Good Faith Efforts (due at time of bid)
- Part C: Letter of Intent & Ongoing GFE Plan (post-bid submittal)

Workforce Goals

- Percentage of total labor hours on the project to be performed by female, and minority individuals
- Minnesota Department of Human Rights (MDHR) Workforce Goals for Hennepin County:
 - 32% Minority
 - 20% Female

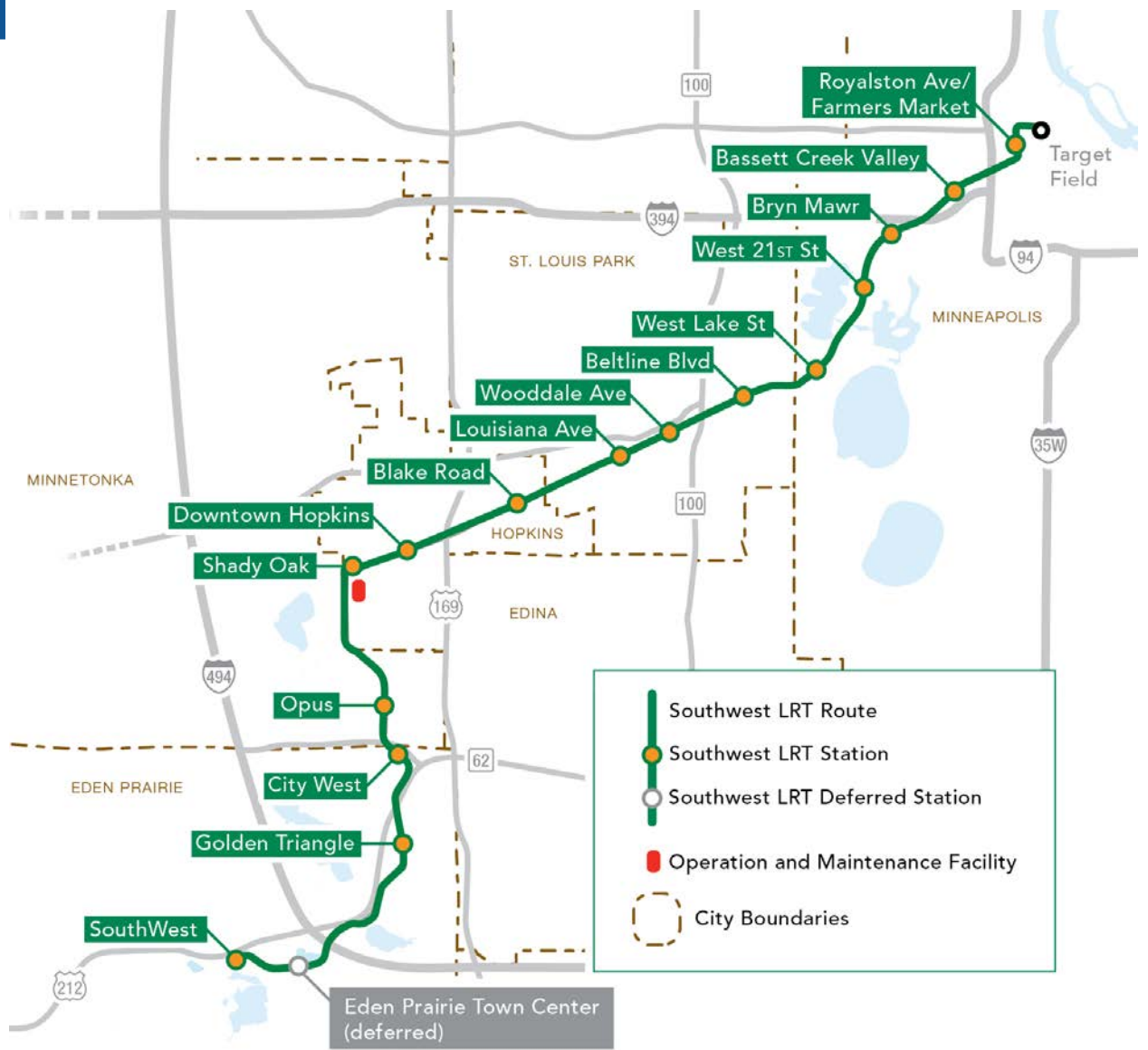
Overview of Project Specifications

Jim Alexander

SWLRT Project Director

Southwest LRT

- 14.5 miles double track
- 15 new stations
- \$1.858 billion total project budget
- 2018-2021 heavy construction
- 2022 begin passenger service



Civil Contract Scope

- 15 Stations
 - Vertical circulation
 - West Lake Street
 - Bryn Mawr
 - Bassett Creek Valley



Civil Contract Scope

- Park-and-rides
 - 7 Surface lots with a total of 1,747 spaces
 - 1 Ramp at SouthWest Station with 2 elevators



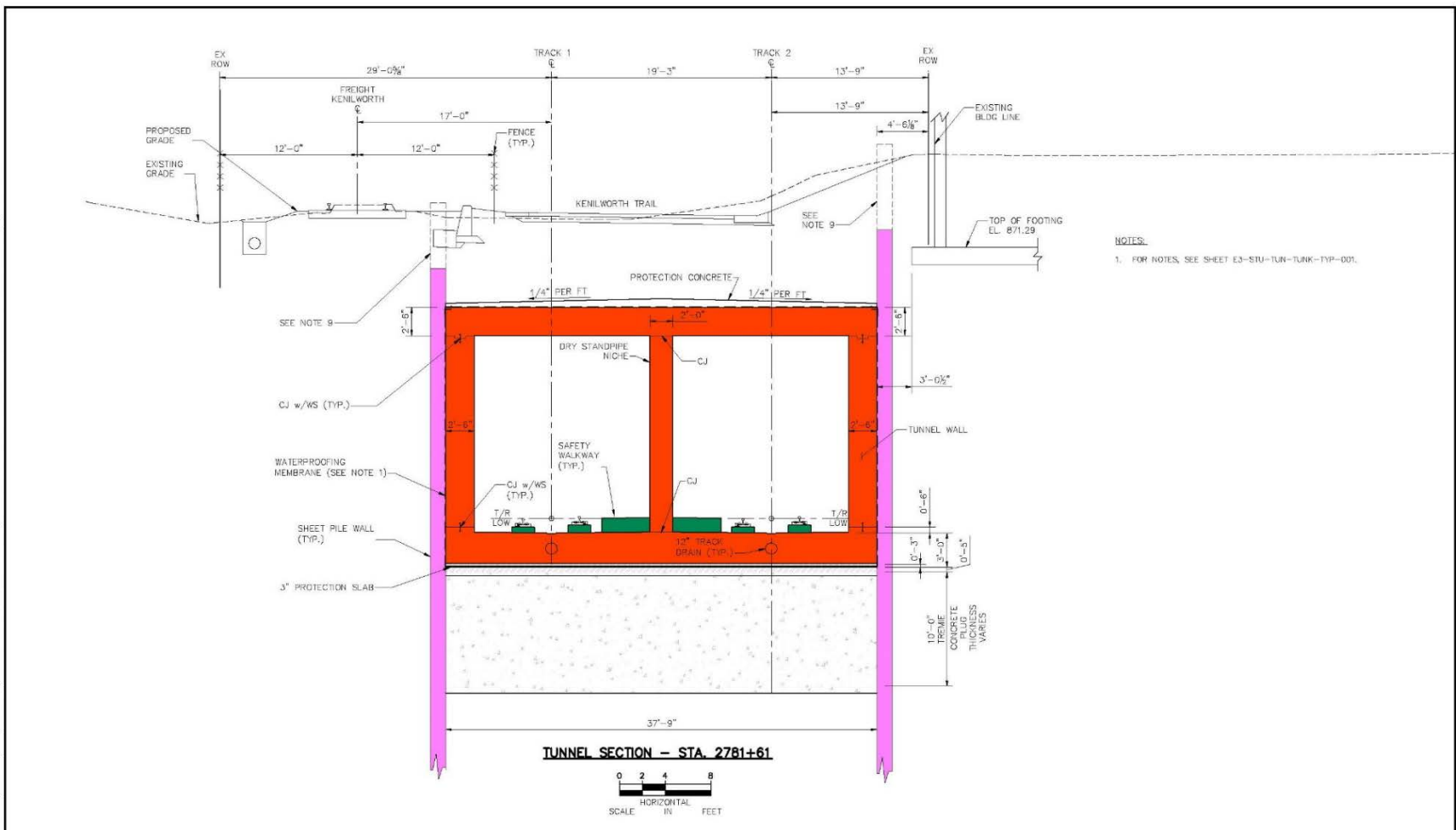
Civil Contract Scope

- 44 structures
 - 29 new bridges (LRT, Pedestrian, Roadway, Freight)
 - 7 existing bridges with modifications
 - 6 pedestrian tunnels
 - 2 cut and cover tunnels (TH62 582 ft., Kenilworth 2,236 ft)
- 15 at-grade crossings
- 118 retaining walls
- Track (153,440 TF)

Civil Contract Scope

- Demolition of 14 existing buildings
- Soil improvements
- Roadways, curb, gutter, sidewalks and trails
- Traffic signals, striping and signage
- Systemwide cable trough/ductbank/foundations
- Utilities and drainage
- Urban design and landscaping
- Freight (BNSF, TCWR and CP)

Tunnel Construction



NOTES:
1. FOR NOTES, SEE SHEET E3-STU-TUN-TUNK-TYP-001.

NO.	DATE	DRAWN	CHECK	DESIGN	REVISION	SUBMITTAL

MB BY: SR 02/18/16
100% DRAFT SUBMISSION - 04/27/16



**CIVIL - VOLUME 5
 KENILWORTH TUNNEL (BRIDGE 27C15)
 TUNNEL SECTIONS
 SHEET 3**

DISCIPLINE: STRUCTURES SHEET NAME: E3-STU-TUN-TUNK-TYP-003

SHEET 60 OF 168

Project Specifications

- Specifications include three main categories:
 1. Division 01: Construction Specifications Institute (CSI) MasterFormat - Project Requirements/Procedures
 2. Division 02-34: CSI MasterFormat – Technical Specifications
 3. Special Provisions (S, SB, SL, SS, ST, SZ and UT): Modifications to Standard Specifications including MnDOT and City Standards

Project Specifications

- Specification Roadmap - Technical Specification Format, Section 01 25 00
 - Primary Technical Specification Format (PTSF) for each Drawing Volume
 - PTSF Sample from Section 01 25 00

Table 1 - Drawing Volume PTSF		
Drawing Volume	Engineering Discipline	PTSF
Volume 1	Existing Conditions/Survey	MnDOT with Special Provisions
	Removals	MnDOT with Special Provisions
	Building Demolition	CSI MasterFormat
Volume 2	Civil, Roadway and Trails	MnDOT and City with Special Provisions
Volume 3	Track	CSI MasterFormat

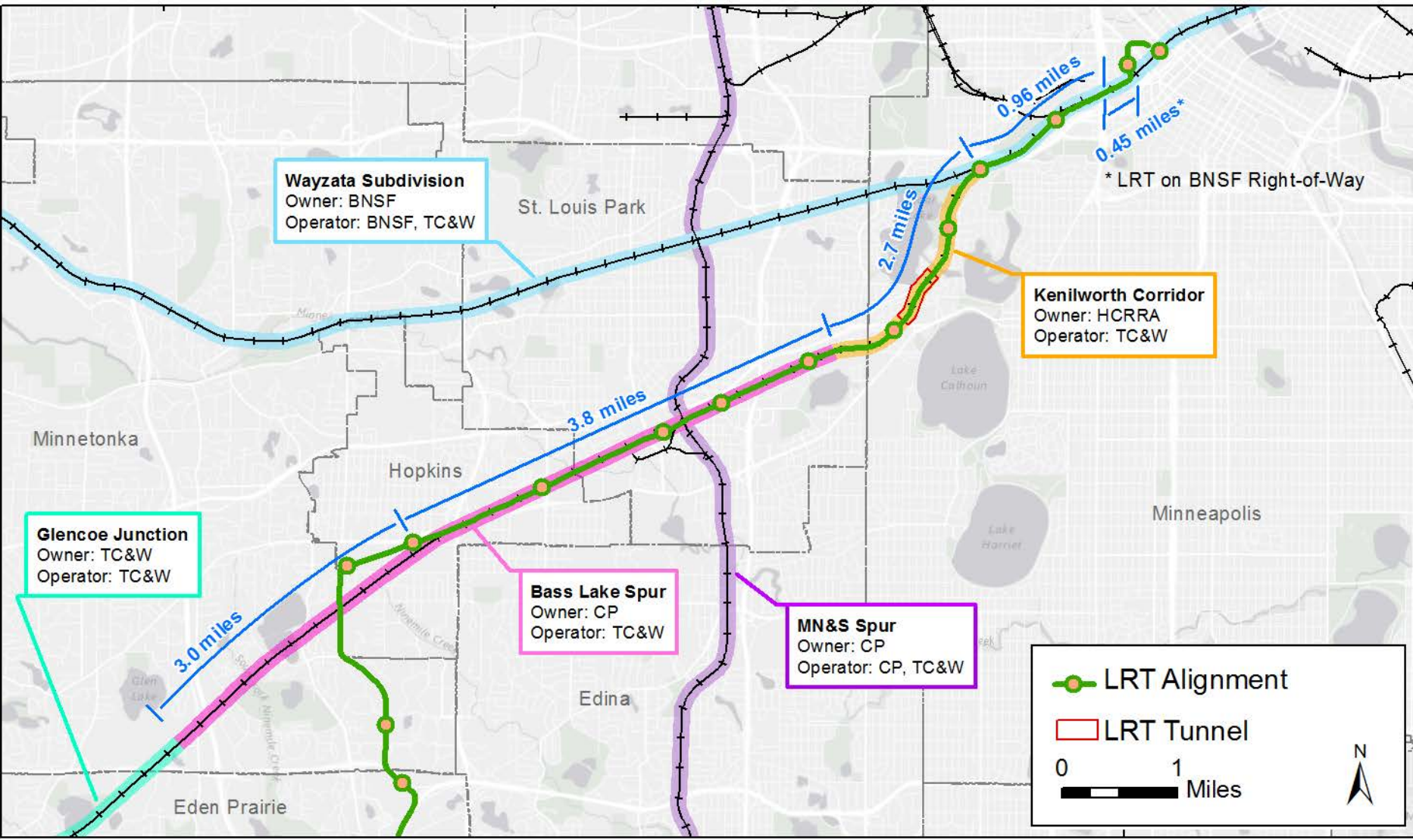
Quality Management Requirements

- Quality Management Requirements, Section 01 44 00
 - Identifies requirements for Contractor's Quality Management System
 - Describes requirements for Quality Plans
- Quality Assurance (QA), Section 01 43 00
 - QA Program overseen by Independent Quality Manager, assigned by Contractor
 - Staff must be independent from Contractor's field operations
 - Material tests performed by qualified Independent Testing Laboratory (ITL)
- Quality Control (QC), Section 01 45 00
 - Performed by Contractor's qualified staff or ITL

Quality Management Requirements

- Oversight Verification performed by Council
 - Review/audit Contractor's Quality Management System
 - Conduct observations to establish confidence that quality functions are performed thoroughly
- Inspections performed by Council
 - Special Inspections identified in Appendix P, Council Special Inspection Matrix

Existing Freight Rail Network



Freight Rail Construction

- BNSF Subdivision
 - Contractor responsible for work up to bottom of ballast
 - BNSF responsible for work ballast up
- Kenilworth Corridor and Bass Lake Spur
 - Contractor responsible for all work except distant signal near Cedar Lake Parkway and turnout at MN&S connection
 - BNSF responsible for distant signal
 - CP responsible for ballast and turnout at MN&S connection

Freight Rail Construction

- Contractor responsible for maintenance of Kenilworth Corridor and Bass Lake Spur
 - Track structure
 - Track structure maintained to FRA Class 1, 2, and 5, as specified in Freight Rail Coordination, Section 01 42 00
 - At-grade crossing signals
 - At-grade crossing signals maintained per CFR, 49, Part 234
 - From a time 7 days after LNTP to Final Completion
 - Added new allowance on bid form for Freight Rail Maintenance (\$1M)

Construction Outreach/Communications

- Best practices:
 - Outreach coordinators
 - Construction information workgroups
 - 24-hour hotline
 - Property/business owners meetings
 - Open houses/neighborhood meetings
 - Construction tours
 - Social media/website/media
 - Ads
 - Signage



Public Resources

- SWLRT.ORG
 - Virtual flyover tour
 - Visualization video
 - Station renderings
 - Copy of PowerPoint



Overview of Changes in Specifications

Jim Alexander

SWLRT Project Director

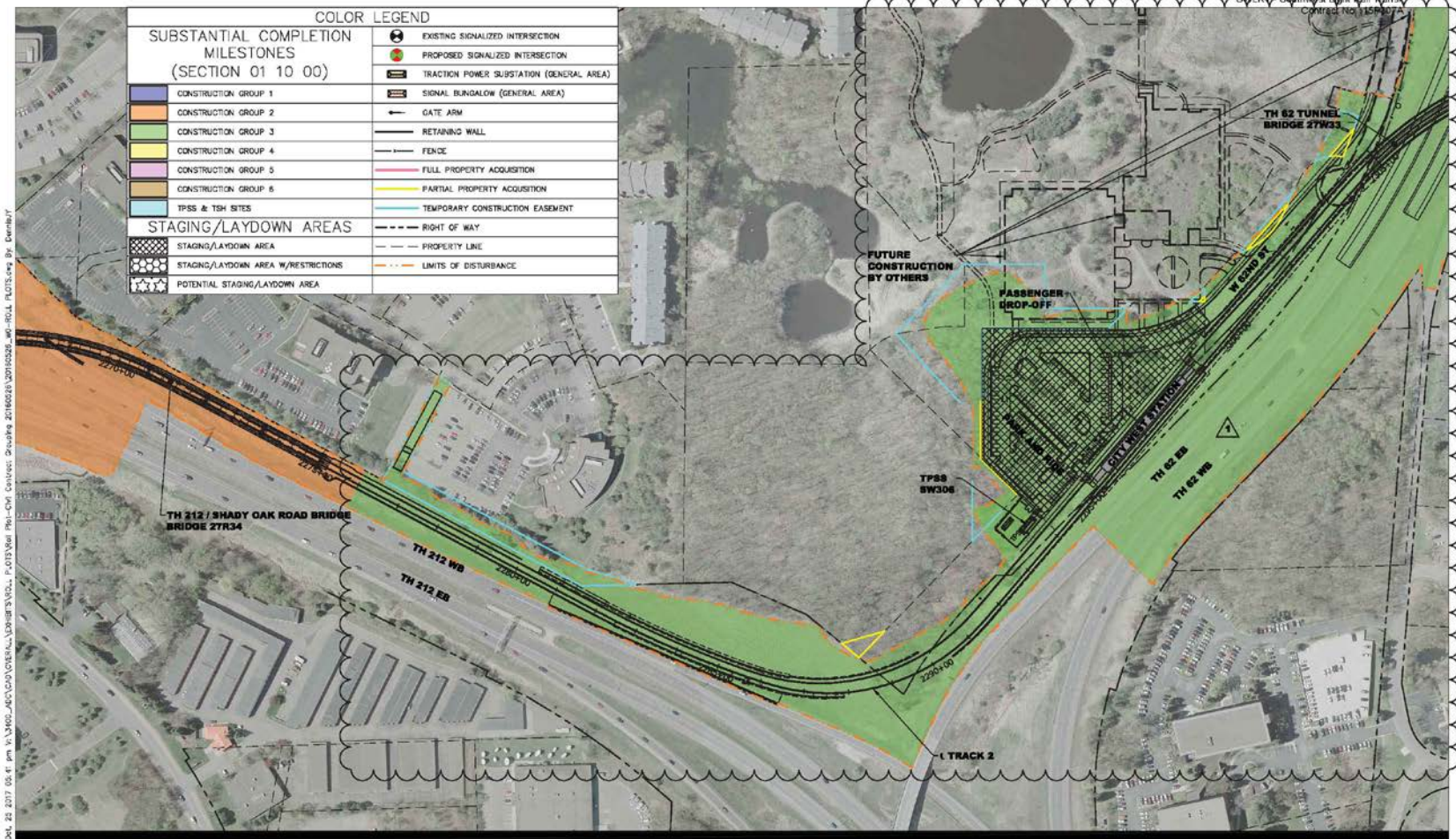
Overview of Changes to Contract Structure

- Increased LNTP amount from \$65M to \$216M
- Increased Mobilization from \$20M (including bonds and insurances) to \$24M (not including bonds and insurances)
- Added new bid items for Bonds, Insurances and Freight Rail Maintenance (Allowance)
- Reduced Council Liquidated Damages by 25%
- Revised Council retainage procedures for Subcontractor work
- Revised Council change order structure for Contractor's overhead and profit fee
- Added steel escalation price adjustment clause

Overview of Changes to Schedule

- Updated Milestone Dates and Construction Completion Groups (CCG)
- Modified schedule at critical scope elements:
 - +45 days for Substantial Completion
 - +36 days for SouthWest Station
 - -107 for 62 Tunnel
 - +88 days for Yellow Circle Drive, Red Circle Drive, Bren Road East intersection
 - +25 days for Excelsior Bridge
 - +88 days for Southerly Connector/Louisiana Station
 - -170 days for Wooddale Station
 - +8 days for West Lake Street, West 31st Street, Abbott Avenue South and Chowen Avenue South
 - +111 days for Kenilworth Tunnel

62 Tunnel: Moved from CCG-5 to CCG-3, Reduced limit by 963' (-107 days)



CIVIL CONTRACT SCHEDULE MILESTONE MAPS
 SEGMENT W2 - EDEN PRAIRIE
 CITY WEST STATION
 Revision 5

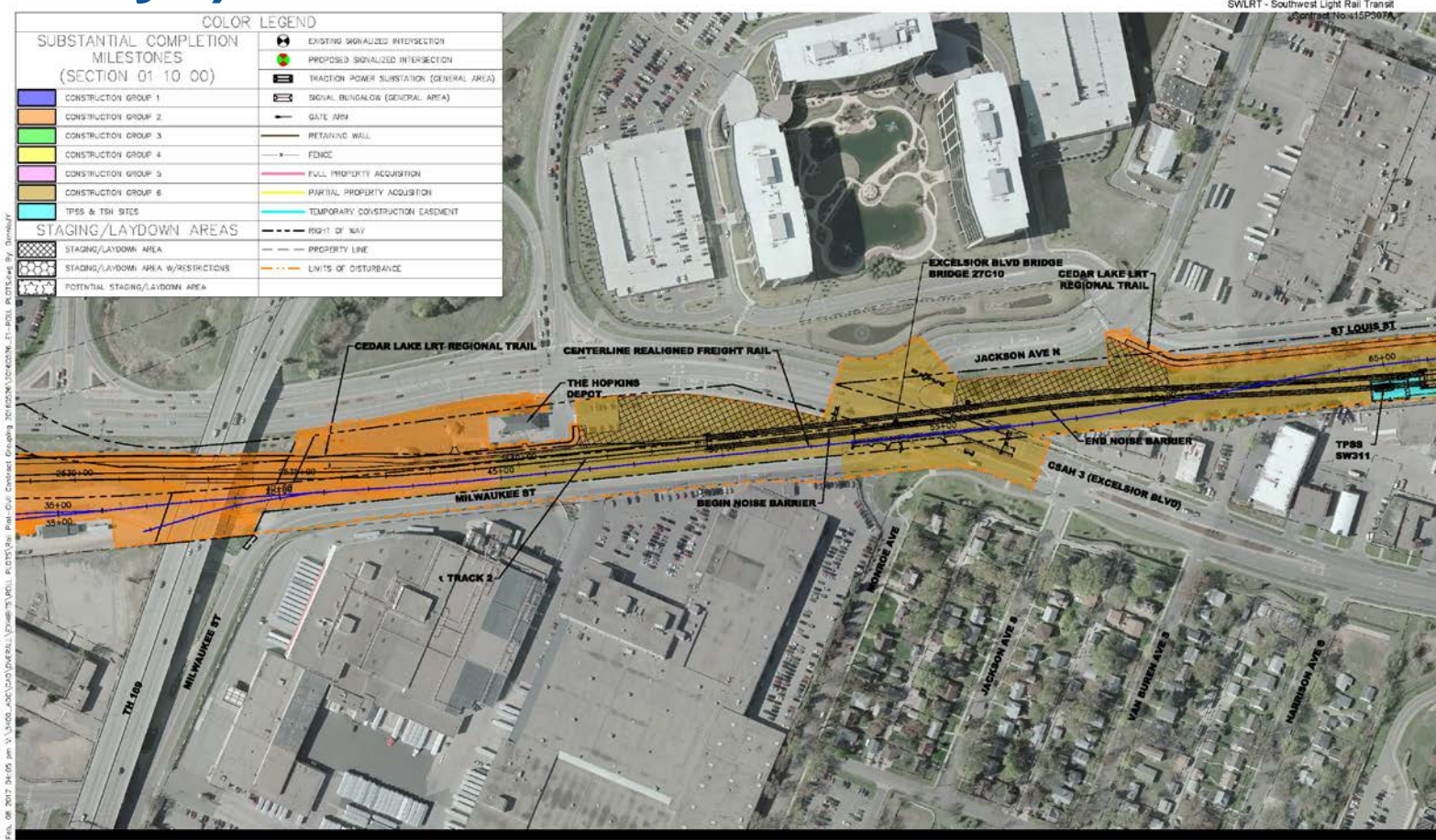
0 50 100 200
 SCALE HORIZONTAL IN FEET

6

Civil - Appendix G-7



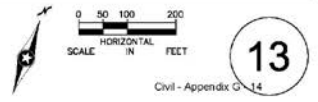
Excelsior Bridge: Remains in CCG-6 (+25 days)



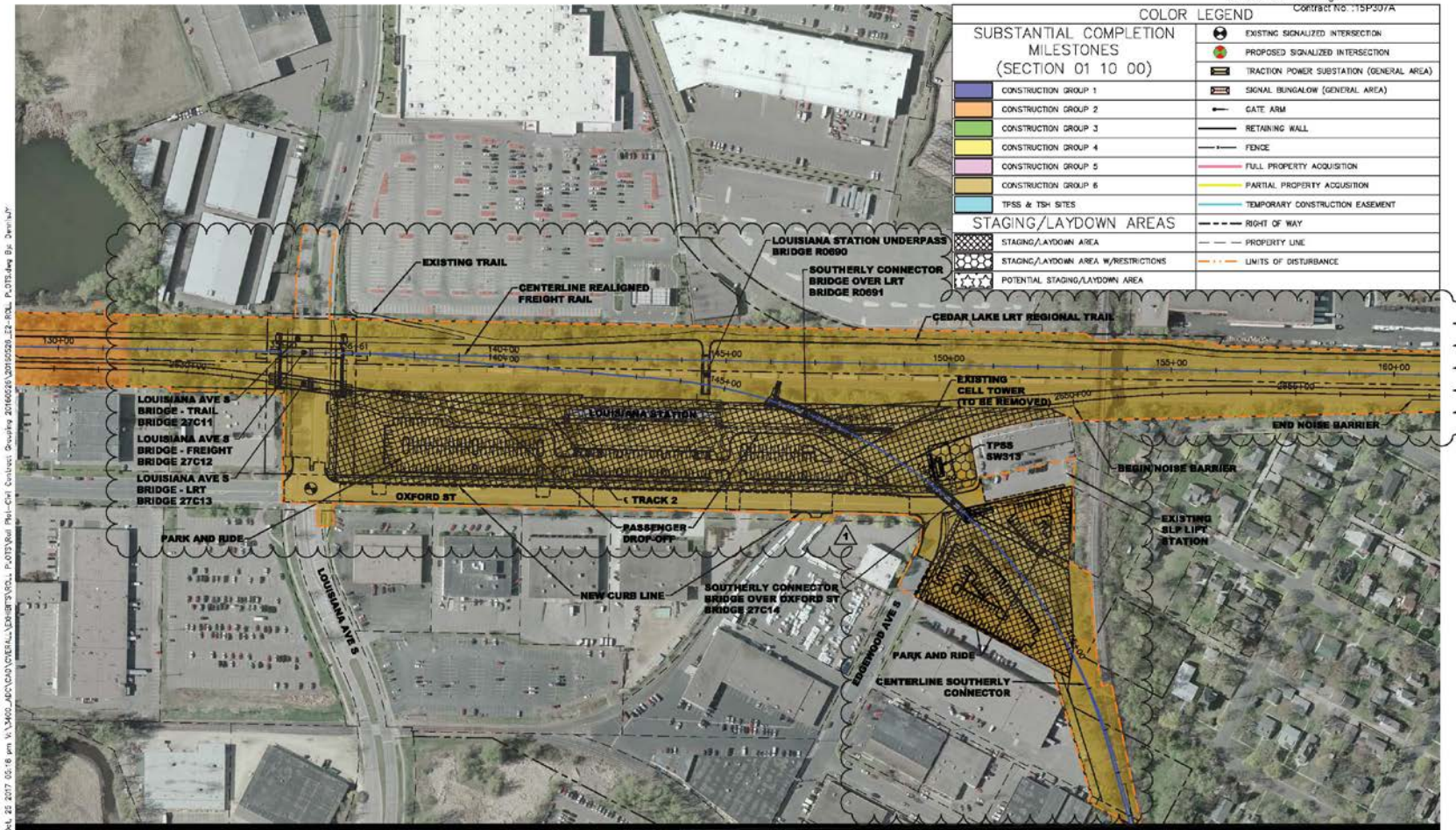
File: 08-2017-04-05 pm V:\4009_A02\4009\GENERAL\PROJECTS\SWLRT - RCTE\Rail-Pad-Civil-Contract-Grounding-20180208\101010000_E1-001_RCTE-04-05 By: Timbalay



CIVIL CONTRACT SCHEDULE MILESTONE MAPS
 SEGMENT E1 - HOPKINS
 EXCELSIOR BLVD. CROSSING
 Revision 5

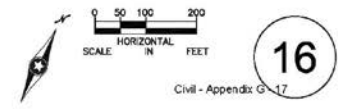


Louisiana Station & Southerly Connector: Moved from CCG-5 to CCG-6 (+88 days)



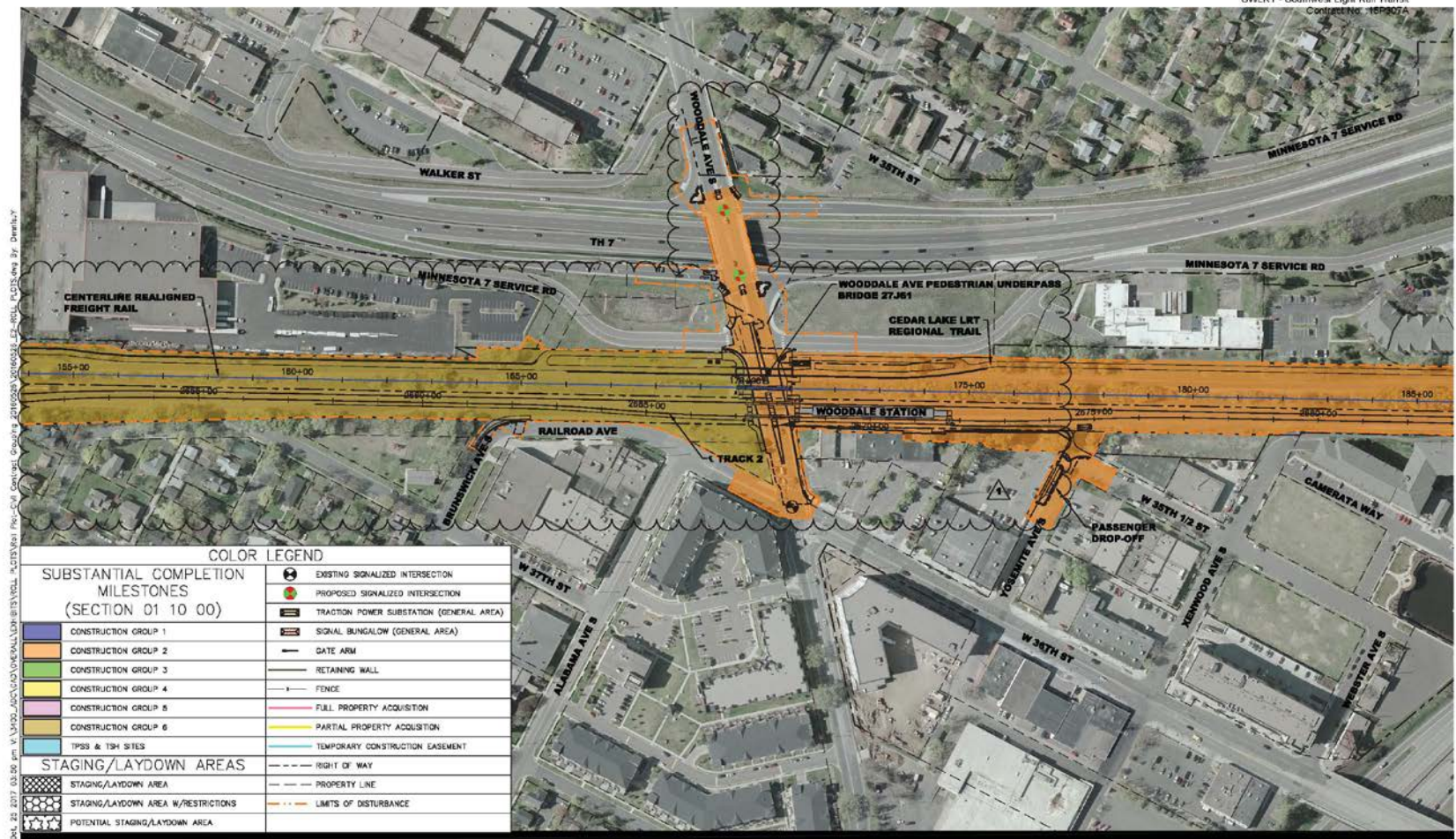
04.1.22.2017 05:16 am V:\3400_AFC\CD\GENERAL\DR\DR\001_PLOTS\Rail_Plot-Civil_Contract_Schedule_20160520_V0110208_22-40L_PLOTS\Map_Bld_Schem.b7x
 04.1.22.2017 05:16 am V:\3400_AFC\CD\GENERAL\DR\DR\001_PLOTS\Rail_Plot-Civil_Contract_Schedule_20160520_V0110208_22-40L_PLOTS\Map_Bld_Schem.b7x

CIVIL CONTRACT SCHEDULE MILESTONE MAPS
 SEGMENT E2 - ST. LOUIS PARK
 LOUISIANA AVENUE STATION
 Revision 5



Wooddale Station: Moved from CCG-6 to CCG-2, Reduced limit of work by 660' (-170 days)

SWLRT - Southwest Light Rail Transit
Contract No. 16R307A



CIVIL CONTRACT SCHEDULE MILESTONE MAPS
SEGMENT E2 - ST. LOUIS PARK
WOODDALE AVENUE STATION
Revision 5

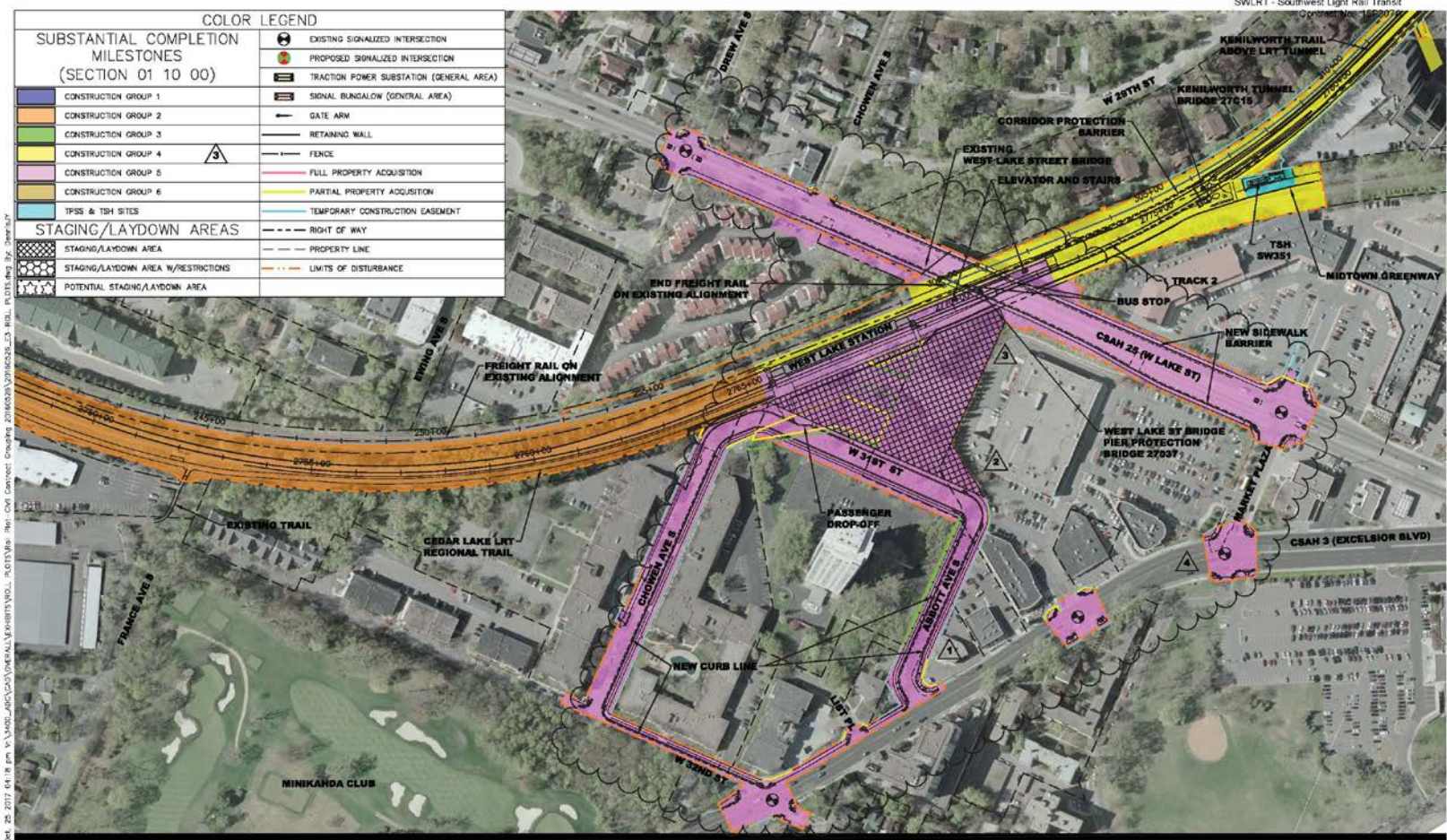
0 50 100 200
SCALE HORIZONTAL IN FEET

17

Civil - Appendix G-18



West Lake St, W 31st St, Abbott Ave S, Chowen Ave S: Moved from CCG-4 to CCG-5 (+8 days)



Oct. 20 2017 6:16 pm V:\ARC\ARC\G05\GENERAL\PROJECTS\NDL_A01\TYP\Rev 300_PLOT1.dwg 300.dwg
 Rev: CIVL Contract: 20160205/20160205_03_BOL_PLOT1.dwg 300.dwg

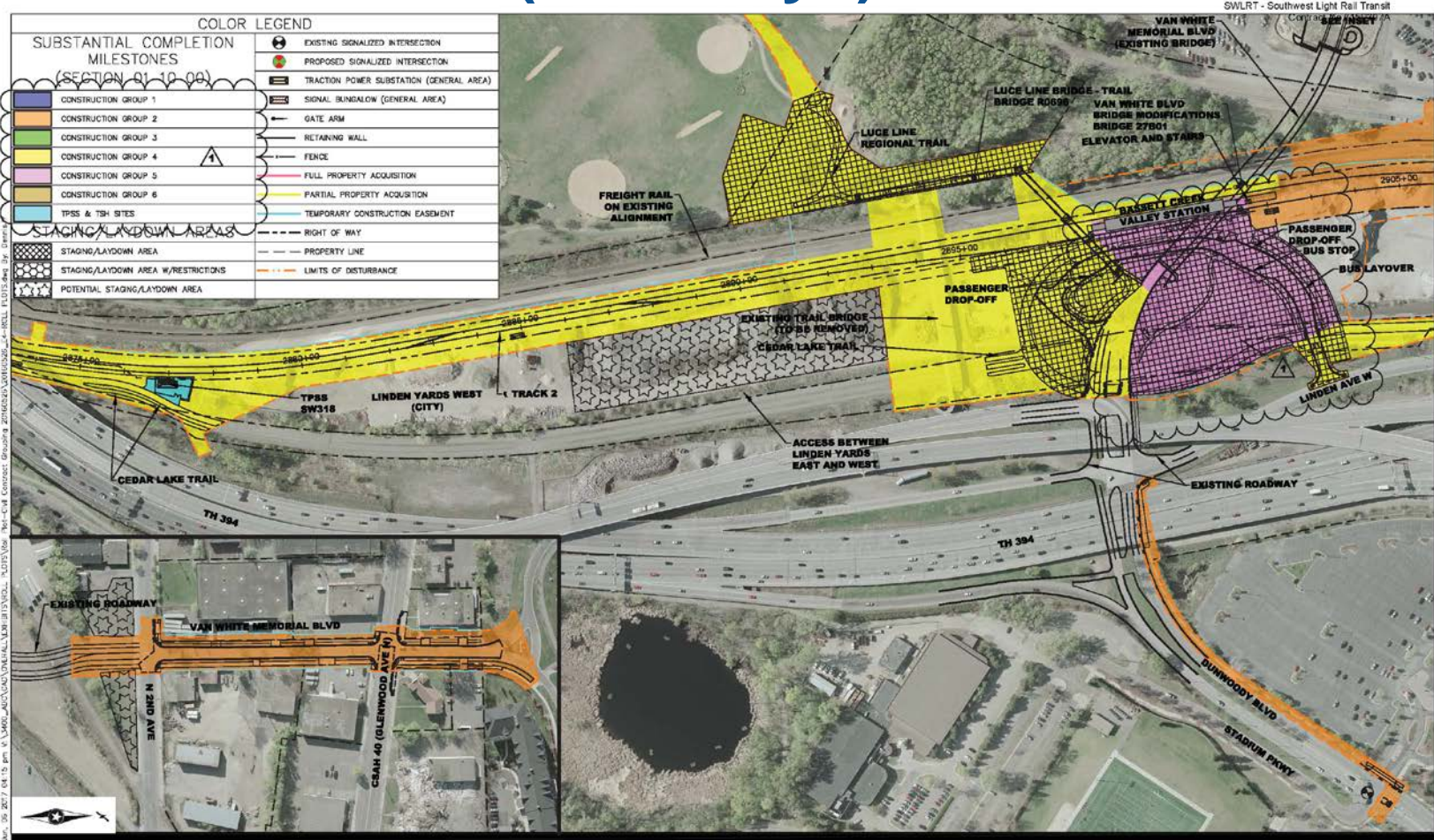
CIVIL CONTRACT SCHEDULE MILESTONE MAPS
 SEGMENT E3 - MINNEAPOLIS
 WEST LAKE STREET STATION
 Revision 5

0 50 100 200
 SCALE HORIZONTAL IN FEET

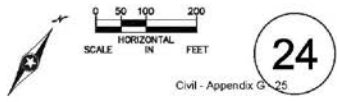
 Civil - Appendix G-21



Kenilworth Tunnel to Bassett Creek Valley Station: Remains in CCG-4 (+111 days)



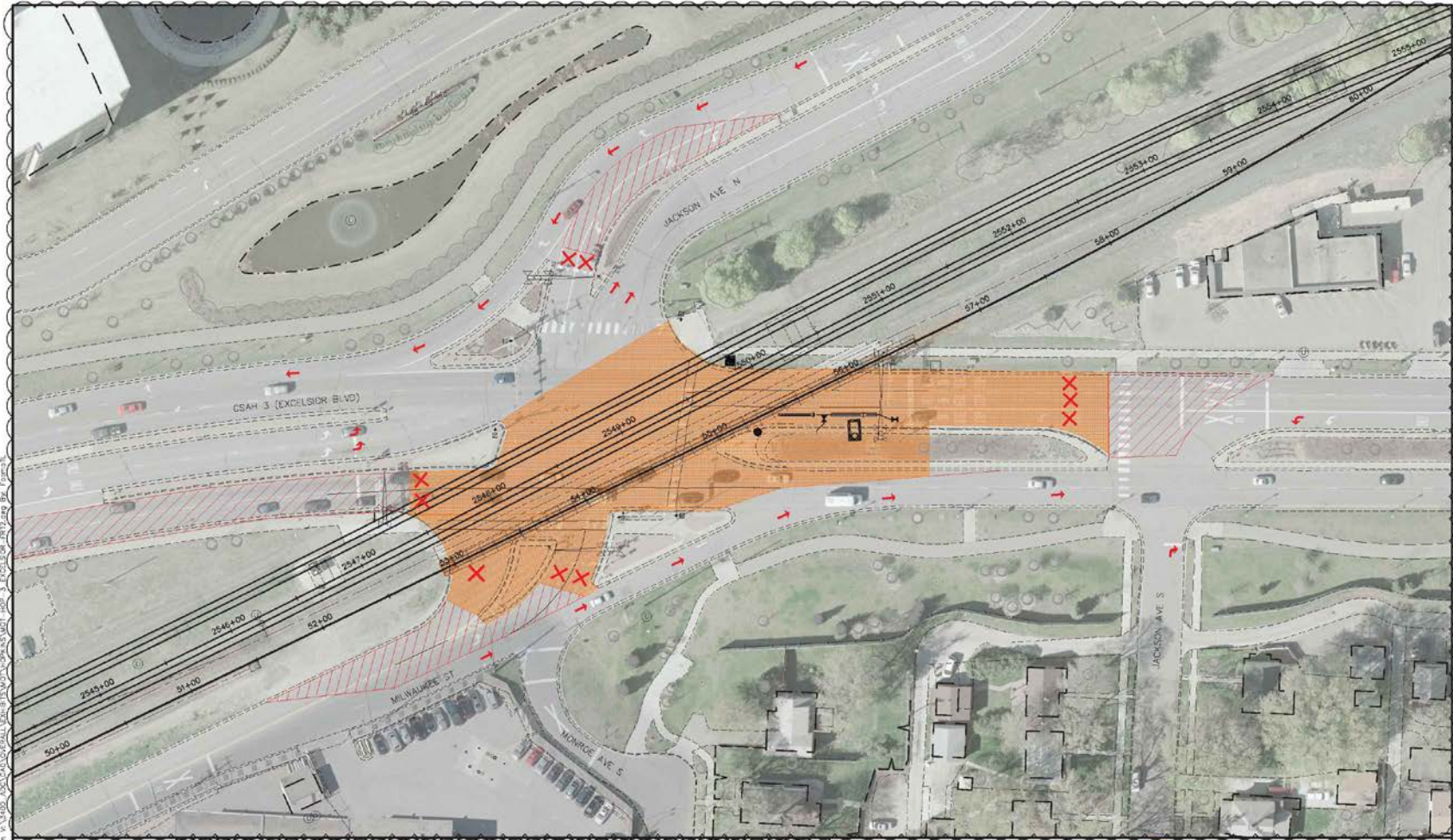
CIVIL CONTRACT SCHEDULE MILESTONE MAPS
 SEGMENT E4 - MINNEAPOLIS
 BASSETT CREEK VALLEY STATION
 Revision 5



Additional or Extended Closures

- Two (2) closures of Excelsior Blvd in Hopkins for fourteen (14) days
- New closure of Cedar Lake Trail
 - From Excelsior Boulevard (Hopkins) to France Avenue (Minneapolis)
 - Closes trail for 840 days
 - Reroutes bicycle and pedestrian traffic north along North Cedar Lake Trail or Minnetonka Blvd (alternate route)
- Revised Luce Line bridge phasing
 - Closes bridge for 365 days
 - No longer requires temporary bridge access
- Added additional closure at Kenilworth Trail
 - From Greenway to 21st Street
 - Extends trail closure by 110 days

Excelsior Blvd: Two 14 Day Closures



City of Hopkins, Minnesota, 2017. All rights reserved. This map is for informational purposes only. It is not intended to be used for any other purpose.

SOUTHWEST
Green Line LRT
October 26, 2017

EXCELSIOR BOULEVARD CONSTRUCTION
CITY OF HOPKINS - DETOURS
EXHIBIT HOP-3 (SHEET 2 OF 2)
Revision 8

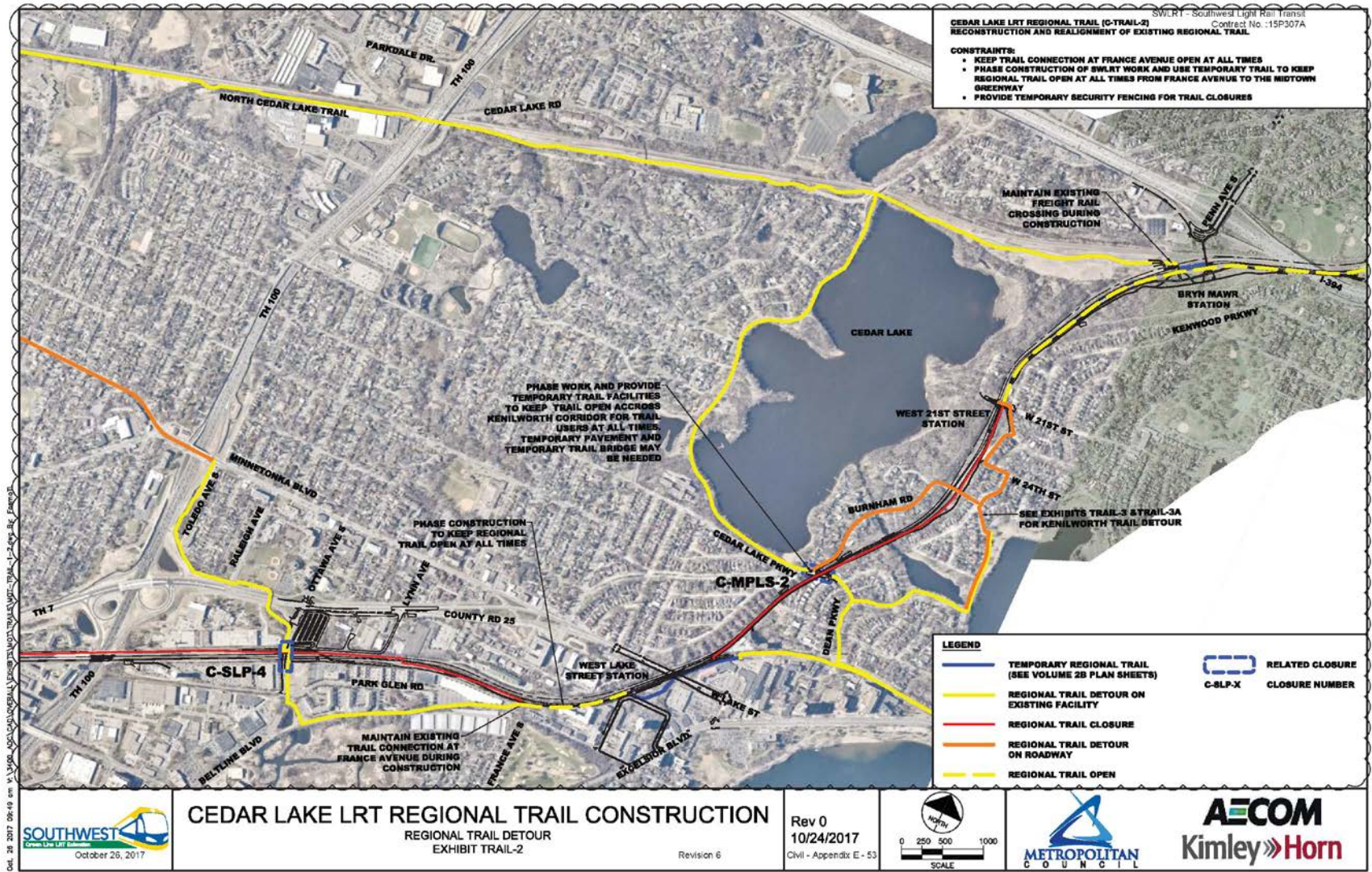
Rev 1
10/24/2017
Civil - Appendix E - 32

0 15 30 60

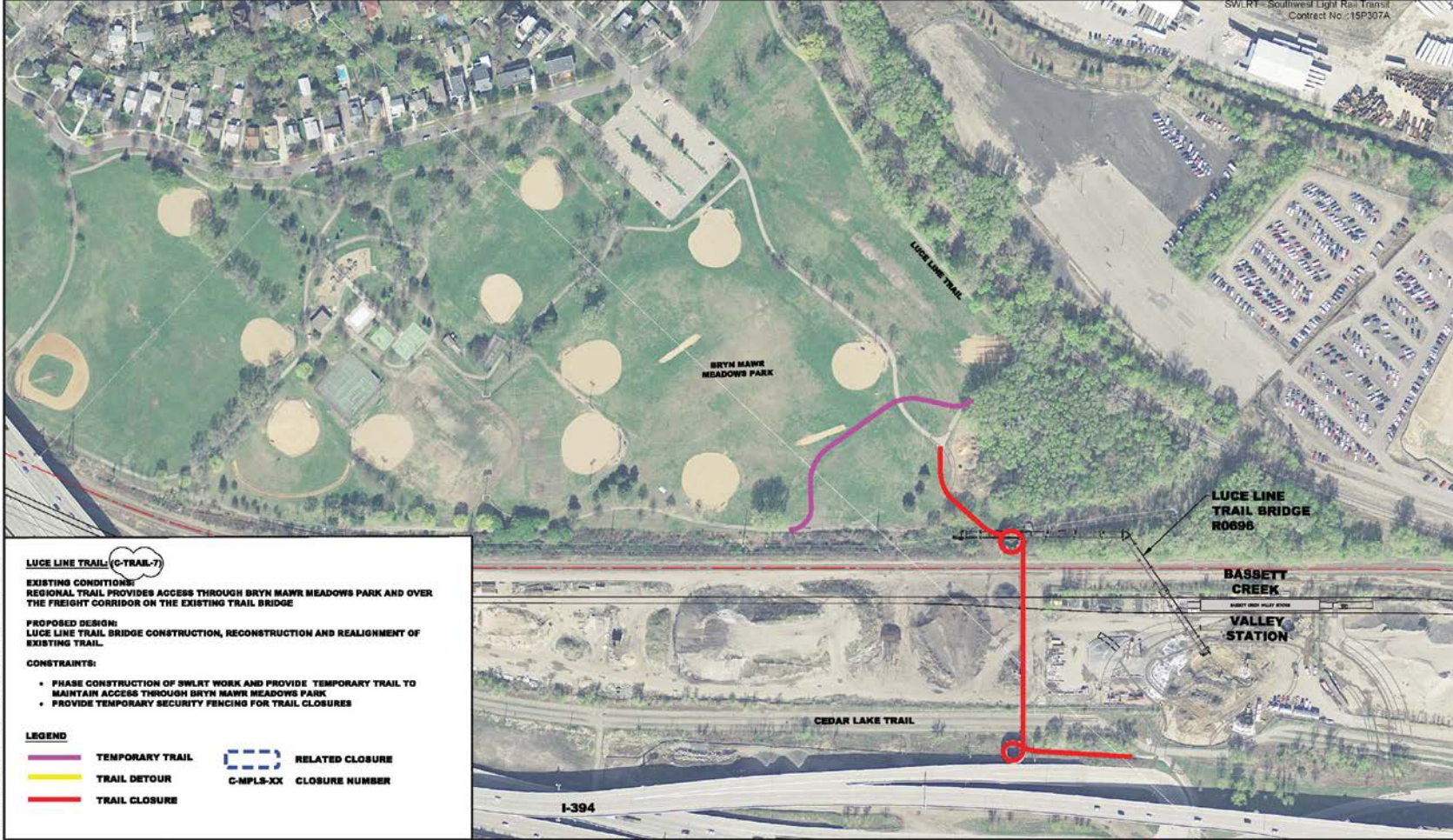
AECOM
Kimley»Horn

METROPOLITAN
COUNCIL

Added Cedar Lake Trail Closure, Reroute



Revise Luce Line Bridge Phasing



SW LRT - Southwest Light Rail Transit
Contract No. 15P307A

LUCE LINE TRAIL (C-TRAIL-7)
EXISTING CONDITIONS:
 REGIONAL TRAIL PROVIDES ACCESS THROUGH BRYN MAWR MEADOWS PARK AND OVER THE FREIGHT CORRIDOR ON THE EXISTING TRAIL BRIDGE

PROPOSED DESIGN:
 LUCE LINE TRAIL BRIDGE CONSTRUCTION, RECONSTRUCTION AND REALIGNMENT OF EXISTING TRAIL.

- CONSTRAINTS:**
- PHASE CONSTRUCTION OF SWLRT WORK AND PROVIDE TEMPORARY TRAIL TO MAINTAIN ACCESS THROUGH BRYN MAWR MEADOWS PARK
 - PROVIDE TEMPORARY SECURITY FENCING FOR TRAIL CLOSURES

LEGEND

	TEMPORARY TRAIL		RELATED CLOSURE
	TRAIL DETOUR		C-MPLS-XX
	TRAIL CLOSURE		CLOSURE NUMBER

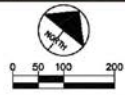
LUCE LINE TRAIL BRIDGE CONSTRUCTION

REGIONAL TRAIL DETOURS
EXHIBIT TRAIL-7

Revision 6

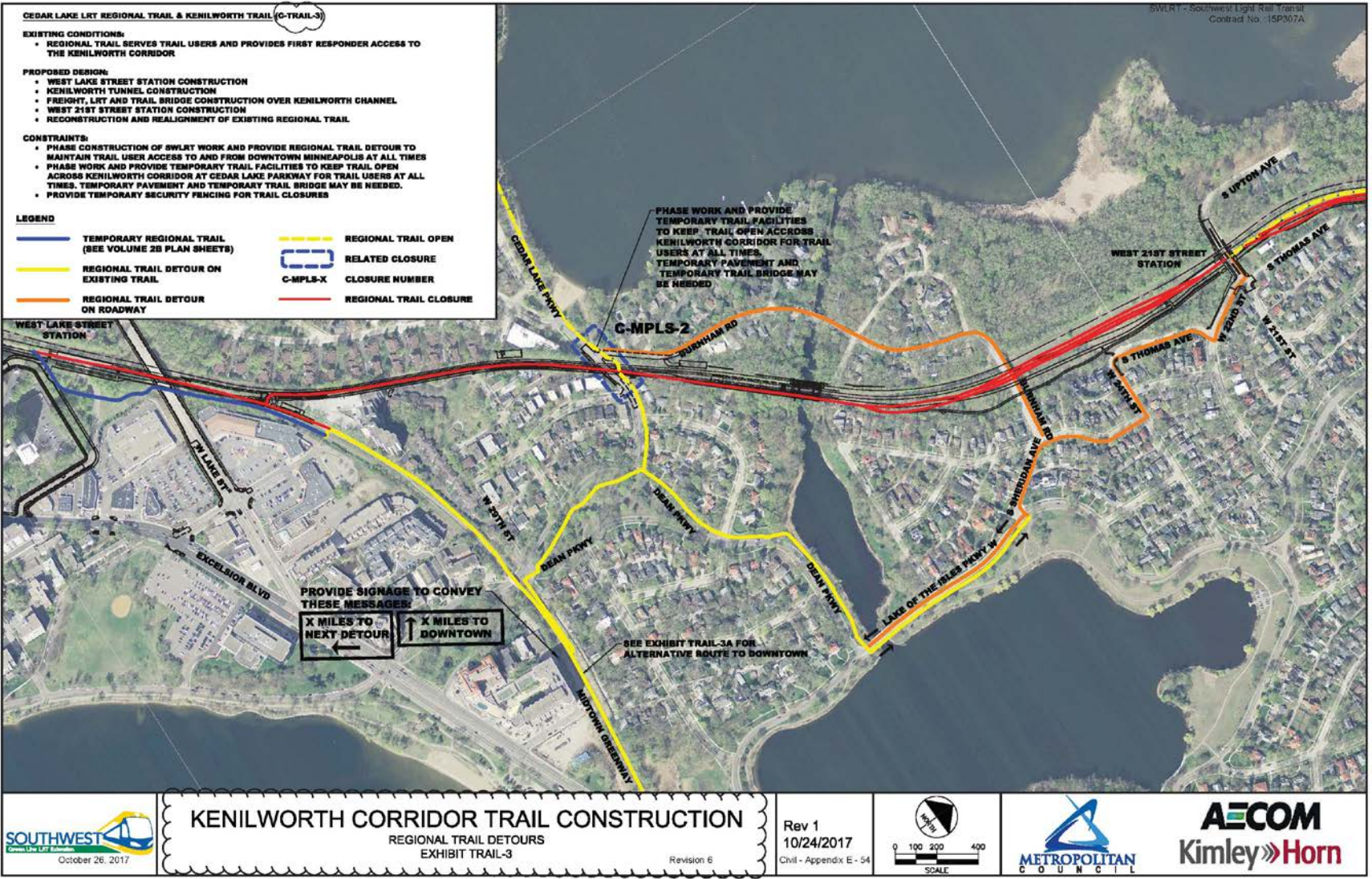
Rev 1
10/24/2017

Civil - Appendix E - 59



Oct. 24. 2017 12:03 pm V:\3000_005\00\GENERAL\DRS\BTS\MCT\TRAILS\DOT-TRAIL-7.dwg By: Fawcett

Increased Kenilworth Trail Closure



Oct. 24, 2017 02:19 pm V:\34001\AECOM\LOCAL\PROJECTS\MOT\TRAILS\MOT-TRAIL-3.dwg (Jy. Formo1)

More Information

Online:

www.SWLRT.org

Email:

SWLRT@metrotransit.org

Twitter:

www.twitter.com/southwestlrt



Civil Construction DBE/Prime Contractor Meet & Greet 3:00pm – 4:30pm

Mixer Details

- 2 primes
- 3 minutes
- Be respectful of time

Participating Prime Bidders

Ames-Kramer

Lunda/C.S. McCrossan