



Construction Update: December 6, 2019

Web: swlrt.org

Twitter: [@SouthwestLRT](https://twitter.com/SouthwestLRT)

Construction Hotline: 612-373-3933

Construction Site Security

Fencing is an important part of any construction project as it provides security for the public, workers, and equipment. Most of the project corridor has been fenced and crews regularly inspect and repair the fencing as needed. The contractor uses cameras on equipment and fencing to deter trespassing, vandalism and theft. The contractor and the project office coordinate with corridor first responders to focus on safety. Project neighbors can be a partner in the safety effort by calling the construction hotline if they see any issues or suspicious activity.

Highlights

- Work on the station structure begins on the Golden Triangle Station.
- Both northbound lanes on Louisiana Avenue will open for traffic today.
- Next week, crews will be setting beams for the freight rail bridge over the Cedar Lake Channel. Expect intermittent closures of the channel for about 20 minutes at a time.
- Work on a temporary trail connection between the North Cedar Lake Trail and Kenilworth Corridor begins next week. Flaggers will be in the area.
- LRT bridge pier work on Royalston Avenue will begin during the week of December 9.

Weekly Construction Photo: Temporary Shoring for the 212/Shady Oak Bridge



Crews prepare to construct the LRT bridge that will span TH 212 and Shady Oak Road connecting Golden Triangle and City West stations.

On-going Activities Update

SouthWest Station Area in Eden Prairie

The temporary passenger drop-off lanes at SouthWest Transit Station have been moved to the west end of the parking structure; bus service continues to operate as usual. Pile driving will continue into 2020 as crews focus on different elements of the station site and the LRT bridge. Retaining wall work for the LRT guideway is also continuing in the area. Crews are constructing a temporary passenger waiting area for bus riders that will be completed in January. Final paving for the bus loop to the temporary shelter will occur the week of December 9. The west drive entrance will reopen when paving work is complete. Transit riders will shift to the temporary facility once it is complete in mid-January.

The right turn lane on the eastbound Hwy 212 ramp to Prairie Center Drive remains closed until Summer 2020.

Crews are working near the intersection of Technology Drive and Prairie Center Drive to build bridge piers. The sidewalk is closed on the northwest corner of Technology Drive and Prairie Center Drive; please follow detour

signage to the southwest sidewalk next to Purgatory Park. Crews will be moving around in this area as they shift to build various bridge piers.

Eden Road Area in Eden Prairie

Retaining wall work is concluding for the winter; backfilling will resume in the spring.

LRT Bridge at I-494/Flying Cloud Drive in Eden Prairie

Crews will resume work on the north abutment the week of December 16. Expect pile driving activities in the area over the next few months. Traffic control barriers continue to be in place. The I-494 eastbound ramp to TH 212 remains closed until Spring 2020. **See detour map below.**

Valley View Road/Flying Cloud Drive in Eden Prairie

The lane restriction on the ramp from Valley View Road to TH 212 remains. Traffic is being diverted onto the HOV lane and will remain in this configuration through the winter. Crews are constructing multiple piers for the new LRT bridge. The various piers are at different stages of completion, with crews working on pile supports and formwork.

Nine Mile Creek

Pile driving for the LRT bridge structure and abutments at Nine Mile Creek will continue through the winter. In mid-December the sidewalk on the west side of Flying Cloud Drive will close; pedestrians will be able to use the east side.

Golden Triangle Station in Eden Prairie

Night work will continue for a couple of months in the area to install piles and sheeting. Additional night work may be scheduled in the future as work between the Golden Triangle Station to a bridge over Shady Oak Road and Hwy 212 is completed. Related activities will occur during the daytime in the surrounding area as crews work on bridges, retaining walls, and relocating utilities simultaneously. Work on the Golden Triangle station structure begins next week.

TH 62 in Minnetonka

Westbound traffic has been shifted to the south side of the highway to accommodate tunnel construction on the north side of the highway. This traffic configuration will be in place through 2020. Over the next few weeks crews will install temporary lighting and supports for the excavation of the LRT Tunnel.

Red Circle Drive and Yellow Circle Drive in Minnetonka

Yellow and Red Circle Drives are being reconfigured. Yellow Circle Drive will be temporarily dead-ended with a cul-de-sac where it connects to Red Circle Drive, and Yellow Circle will become a two-way roadway in the area south of Blue Circle Drive. A temporary by-pass road has also been completed on Red Circle Drive. This roadway configuration will allow for ongoing tunnel construction on TH 62. **See a map of the roadway changes below.**

Smetana Road in Minnetonka and Hopkins

Smetana Road from Feltl Road to Nolan Drive is closed through 2020. A temporary bypass is in place west of the intersection of Smetana and Feltl roads to accommodate traffic in this area. **See detour maps below.**

Minnesota River Bluffs Regional Trail in Hopkins

The Minnesota River Bluffs Regional Trail in Hopkins is closed between Shady Oak Road and 5th Avenue South.

See detour map below.

- The section between 11th Avenue South and Shady Oak Road is closed due to storm sewer construction activities. This portion of the trail is closed until summer 2020.
- The section between 8th Avenue South and 5th Avenue South is closed until Fall 2021.

Downtown Hopkins Station

Foundation work for the station is complete. Work on the station structure will start in January.

Excelsior Boulevard Area in Hopkins

Excelsior Boulevard at the freight railroad crossing reopened to vehicle traffic on Monday, November 25; thank you for your patience during the closure. Crews continue to work on bridge piers and underground utilities in the area.

South Cedar Lake LRT Trail

The South Cedar Lake Trail from just east of the North Cedar Lake Trail connection in Hopkins to France Avenue in St. Louis Park is closed until Fall 2021. The South Cedar Lake Trail will remain open between France Avenue in St. Louis Park and Kenilworth Trail/Midtown Greenway intersection in Minneapolis. The Midtown Greenway will remain open. Currently, cross streets remain open to automobiles, bikes and pedestrians, with separate closures of roadways upcoming at various dates. **See detour maps below.**

Blake Road in Hopkins

Crews are constructing a cut and cover tunnel for the regional trail under Blake Road. Southbound traffic will continue to be diverted to the east side of the road, with one lane in each direction, through the winter. Next spring, crews will move to the east side of the roadway and traffic will remain reduced to one lane in each direction.

Minnehaha Creek in St. Louis Park

Sheet piling and excavation for the new freight and trail bridge abutments continues in this area. Flaggers are monitoring recreational water use during times that construction activities make it unsafe to travel through the creek.

Louisiana Avenue in St. Louis Park

Vehicle traffic will continue to use one southbound lane and starting today, both northbound lanes.

TH 100 in St. Louis Park

The project will be re-positioning the existing freight rail bridge and will build a new LRT bridge over TH 100 in the spring/summer of 2020. Work on bridge abutments will resume the week of December 16.

Beltline Boulevard in St. Louis Park

Work on the new South Cedar Lake Trail Bridge continues. Crews are working on bridge piers and beams. Crews are also working on retaining walls in the area, which includes pile driving.

Kenilworth Trail Closure

The Kenilworth Trail is closed in Minneapolis at the intersection with the Midtown Greenway to just south of West 21st Street until Summer 2022. Access for automobiles, bikes and pedestrians remains open at Cedar Lake Parkway and at W 21st Street. **See detour map below.**

Chowen Avenue to Lake Street in Minneapolis

Storm sewer and watermain work will occur during the winter months. Work is anticipated at the beginning of December and is not expected to impact the trail.

Kenilworth Area Construction in Minneapolis

Sheet piling for the Kenilworth tunnel continues, moving north from Park Siding Park. Sheeting will stop short of Cedar Lake Parkway and the press-in-piler will return south, working towards Lake Street. Sheeting installation is expected to last until summer 2020. Tunnel excavation is currently anticipated to begin Spring 2020. For more information about tunnel construction, see the [tunnel FAQ](#) information under the construction tab of our webpage: swlrt.org. A short [video](#) of the press-in-piler construction technique is also available.

Concrete work for the retaining walls south and north of the channel continues.

Cedar Lake (Kenilworth) Channel and Works Progress Administration (WPA) in Minneapolis

Crews will set the beams for the freight rail bridge during the week of December 9. Weather permitting, crews will focus efforts to complete the beams between two of the piers on December 10 and 11. Expect intermittent closures of the Channel for about 20 minutes at a time.

21st Street in Minneapolis

Retaining wall activities are being completed in the area.

North Cedar Lake Trail in Minneapolis

The North Cedar Lake trail in Minneapolis from Linden Yards located west of Van White Boulevard to east of Royalston Avenue is closed for approximately two years until mid-2021. **See detour maps below.**

Crews will install a temporary trail bypass in the area where the North Cedar Lake Trail connects to the Kenilworth Trail. This work is in preparation for station construction in spring 2020. Flaggers will be in the area to direct pedestrians and cyclists through the construction area.

Please note, construction vehicles cross the trail as they enter and exit staging areas. Construction vehicles yield to trail users but please be aware that you may encounter construction traffic in this area.

Glenwood Avenue in Minneapolis

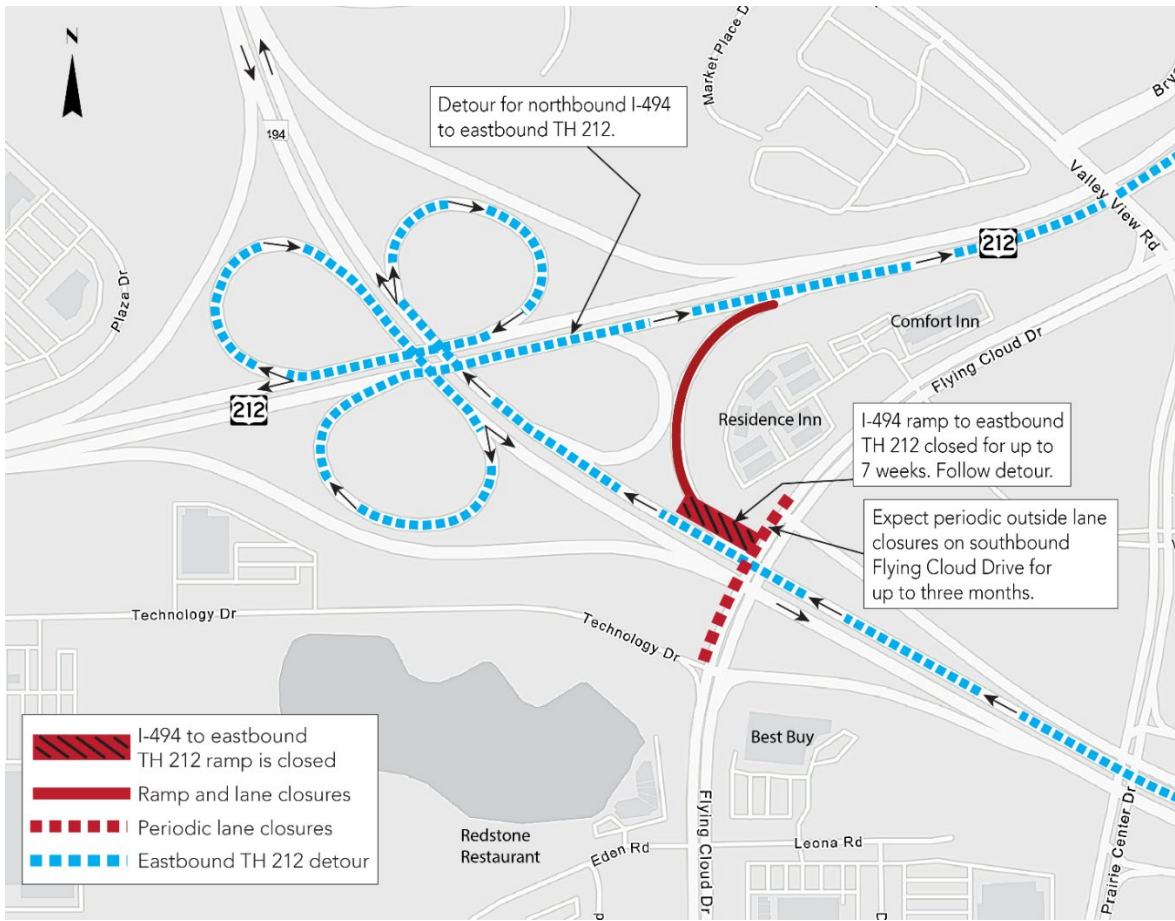
Glenwood Avenue between Lyndale Avenue North and 11th Street North is closed until mid-2021. Local access to businesses will be maintained. Generally, vehicle detours will use Lyndale Avenue, Olson Memorial Highway and 7th/10th Streets. The pedestrian detour continues to utilize Border Avenue, Holden Street and Royalston

Avenue sidewalks. Utility work, retaining wall installation and freight track preparation continues. **See detour map below.**

Royalston Avenue in Minneapolis

Work on the LRT bridge piers will begin on the east side of the Royalston Avenue the week of December 9. Northbound Royalston Avenue will be reduced to one lane and southbound Royalston Avenue will be closed between Border Avenue and 5th Avenue. **See the roadway impact map below.**

Northbound I-494 to Eastbound TH 212 Detour



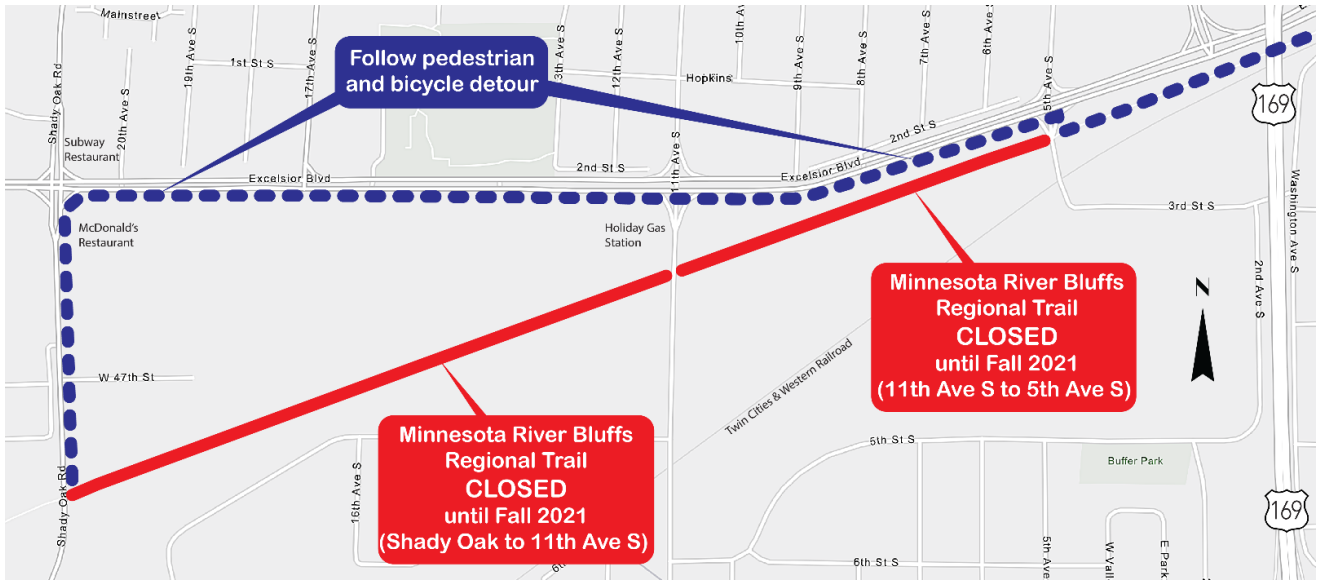
Yellow Circle Roadway Changes in Minnetonka



Smetana Road in Minnetonka and Hopkins Detour

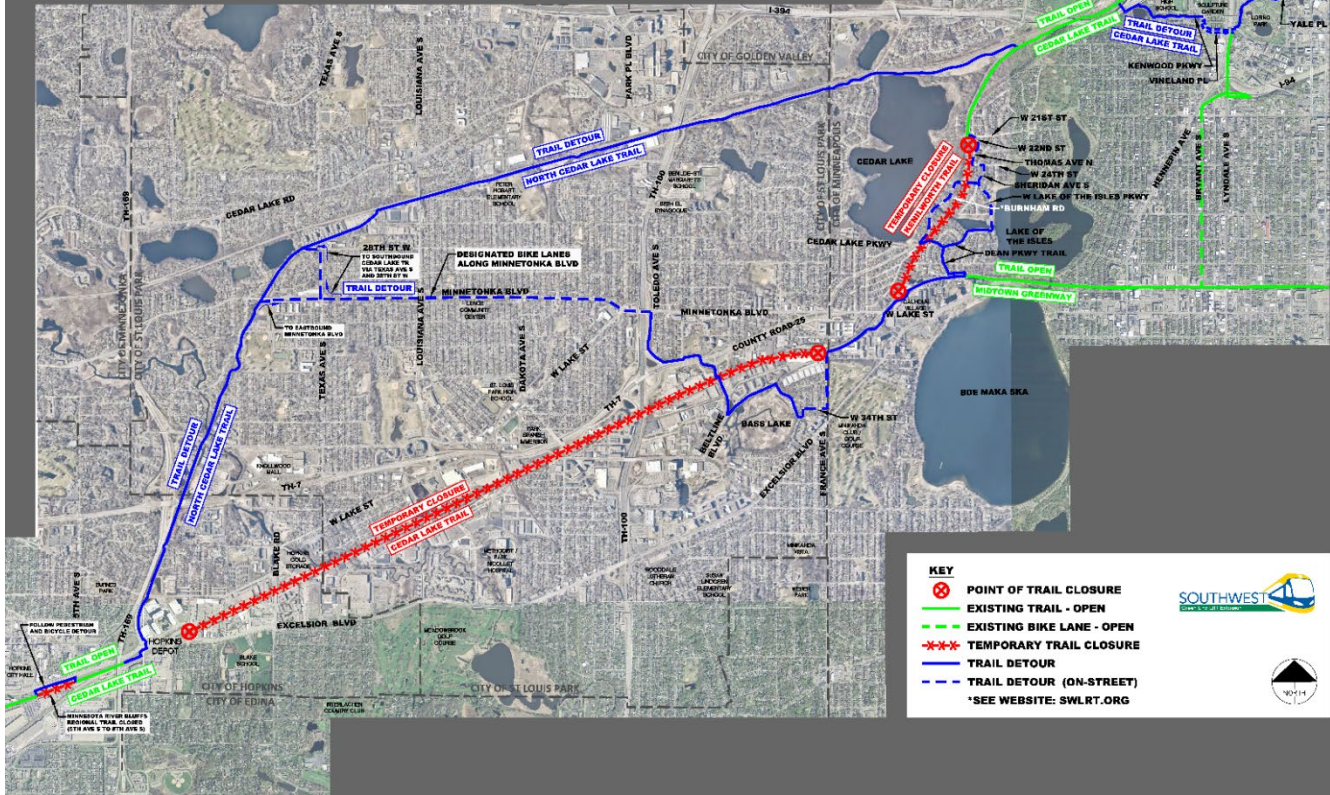


Minnesota River Bluff Trail from Shady Oak Road to 5th Avenue Detour

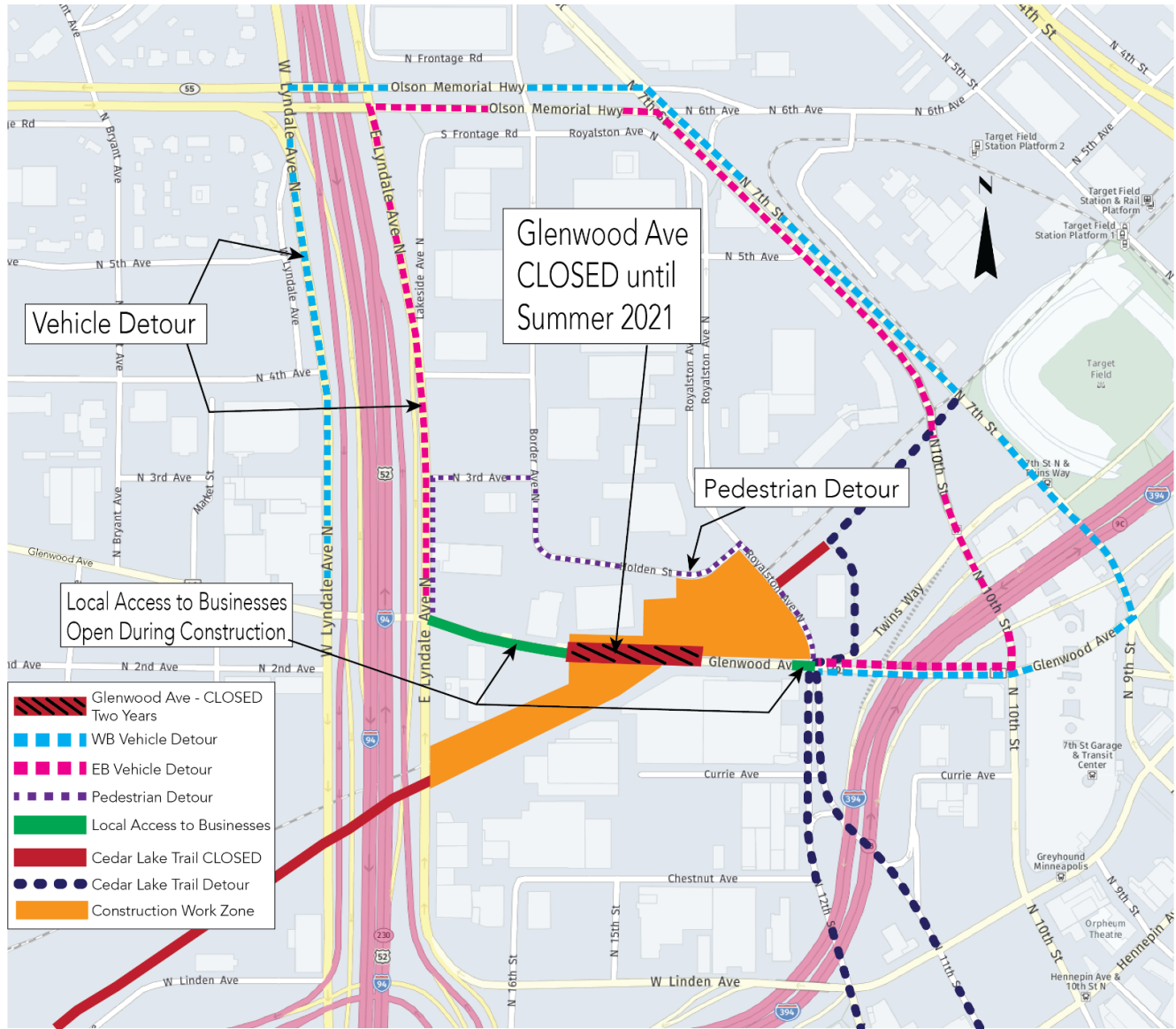


TRAIL DETOUR

MORE DETAILS: SWLRT.ORG



Glenwood Avenue in Minneapolis Detour



Royalston Avenue in Minneapolis

