



# Water Policy Plan Update

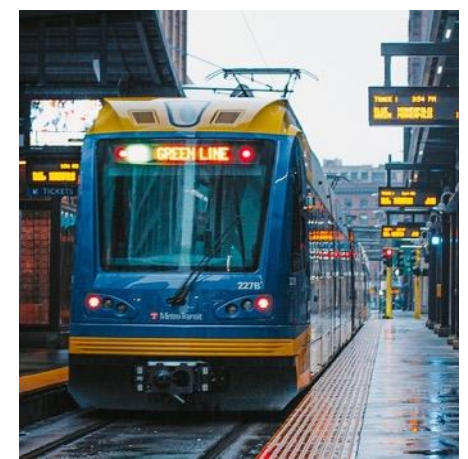
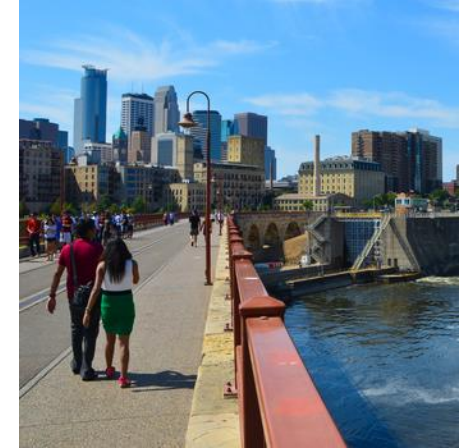
Environment Committee Information Item



# Water Resource Policy Plan (WRPP)

## Plan Purpose

- Met Council is developing the 2050 Water Policy Plan, which **focuses on ensuring sustainable water resources in the region**. It is a part of and informed by the Regional Development Guide.
- The WPP provides a **framework for integrative water planning** (wastewater, water supply, and water resources) the Metro Area Water Supply Plan, and the Wastewater System Plan.
- It contains water **policies, strategies, and actions** for both the Met Council and our 180+ local governments within the seven-county region.
- WPP policies **will commit the Council** to take action in the areas of long-range visioning and planning, regional system investments, facility management, technical assistance, research and assessment, and partnerships.



# Regional Values, Vision, and Goals

## Values

Values are core beliefs or principals that guide the work of the Council, our expectations of partnerships, and our policy and program development.

## Vision

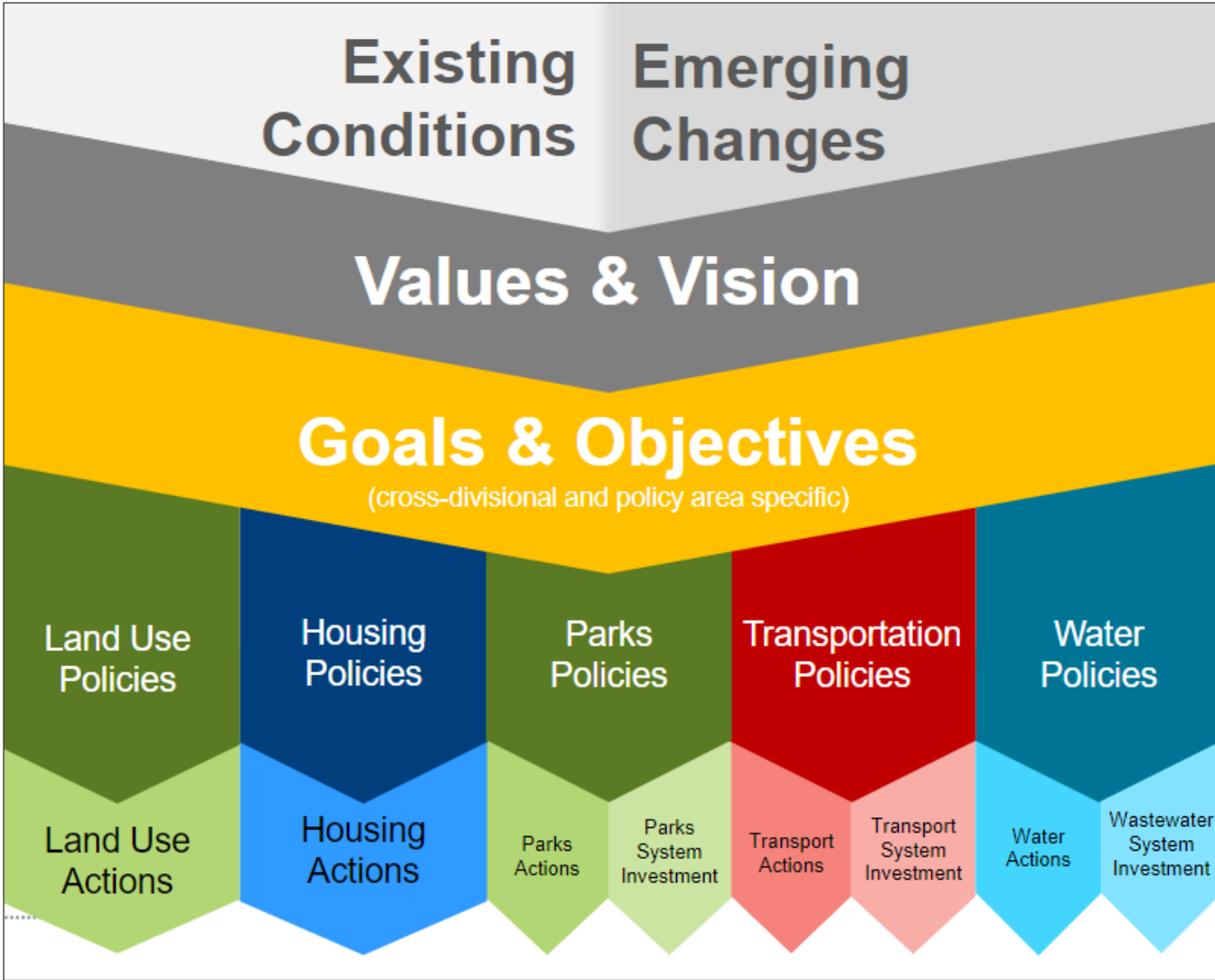
Our vision is what we want to achieve for the region through our policies, practices, programs, and partnerships.

## Goals

Our goals broadly describe the desired outcomes that we want to achieve for the region.

### Cross-Cutting Goals

Goals that require special collaboration across policy and work areas.



# Regional Values (1)



## Equity

We value the people and communities of our region. Our region is economically and culturally vibrant. We also recognize, however, the harm and disparities that injustices, including racism, have created.

We are dedicated to creating systems, policies, and programs that repair and heal past harm, foster an equitable future, and eliminate disparities. Communities that have been marginalized in the past will be at the center of this work in leadership roles.



## Leadership

We value those in our region who inspire and motivate others for positive change. Our region is known for its civic engagement. We need broad and inclusive leadership to help confront the significant challenges we face around equity, climate change, safety, and other pressing issues.

To maximize the potential of our region and its communities, we turn to leadership that is diverse, collaborative, culturally competent, and innovative. We encourage this kind of leadership across all sectors including business, government, non-profit, and education.

# Regional Values (2)



## Accountability

We value being effective in our work and achieving measurable outcomes. Our region is known for its research, initiatives, and collaborations. We must be open to criticism and clearly understand when we are not achieving results or have harmed communities.

We recognize that we can maximize our effectiveness by being in partnership with others. We will also be transparent and flexible so that we can change course when needed.



## Stewardship

We value our region's resources. Our resources include our natural, economic, and financial resources as well as our infrastructure. We recognize that these resources may be vulnerable over time to changing conditions, including from climate change.

We must design our systems and allocate our resources in ways that can be sustained over time and support the needs of future generations.

# Regional Goals

## **Our Region is Equitable and Inclusive**

Racial inequities and injustices experienced by historically marginalized communities have been eliminated; and all residents, regardless of how long they have lived here, feel welcome, included, and empowered.

## **Our Communities are Healthy and Safe**

All our region's residents live healthy, productive, and rewarding lives with a sense of security, dignity, and wellbeing.

## **Our Region is Dynamic and Resilient**

Our region meets the opportunities and challenges faced by our communities and economy including issues of choice, accessibility, and affordability.

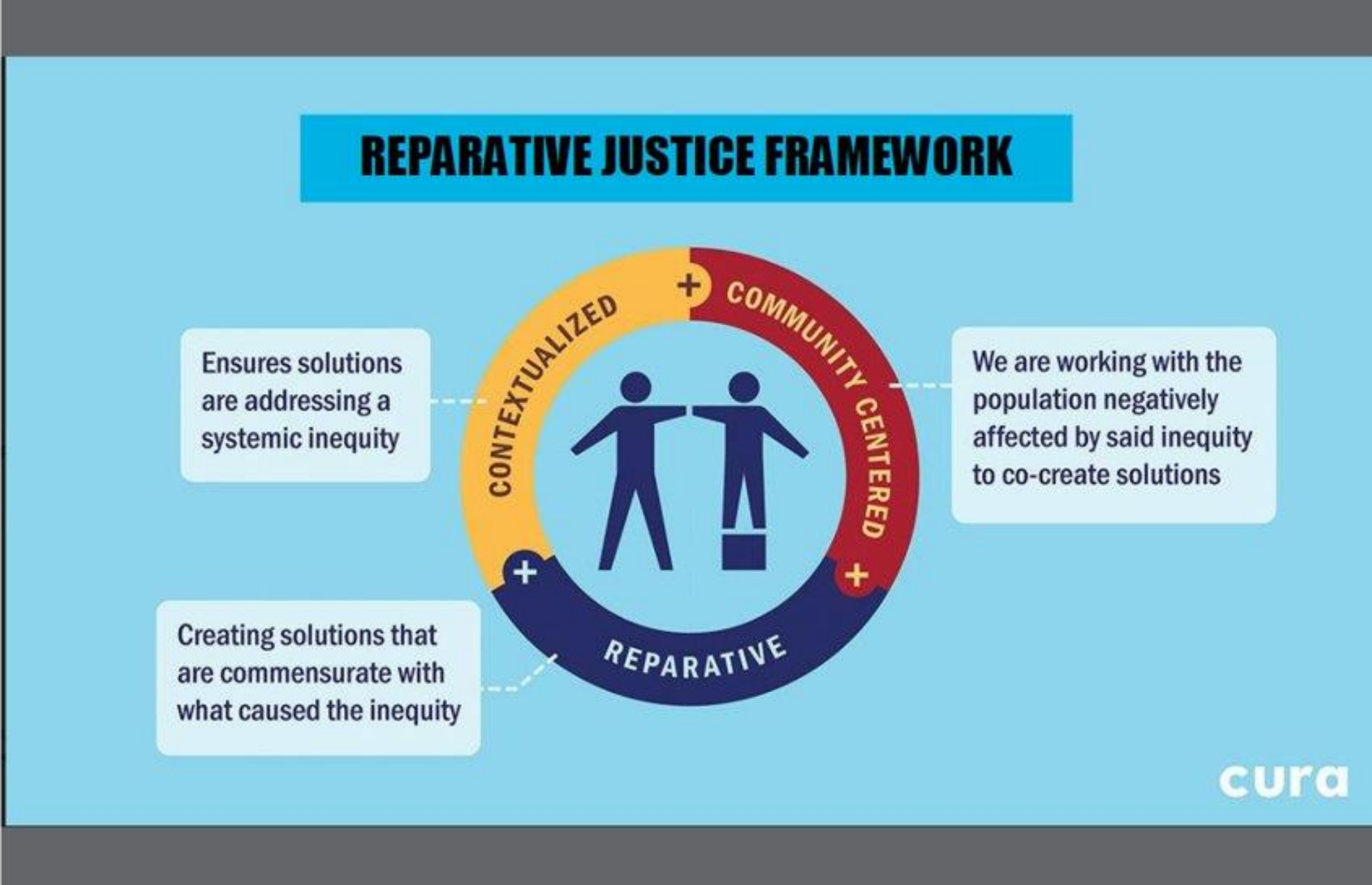
## **We Lead on Addressing Climate Change**

We have mitigated greenhouse gas emissions and have adapted to ensure that our communities and systems are resilient to climate impacts.

## **We Protect and Restore Natural Systems**

We increasingly protect, integrate, and restore natural systems to protect habitat and ensure a high quality of life for the people of our region.

# Equity Framework



# Water Policy Plan – Built on foundational work (1)



## ES Vision Statement

Clean waters for future generations.

## Mission

### Partner

ES partners with national, regional, and local organizations and experts to work towards water sustainability, climate resilience, and equitable water outcomes.

### Plan

ES collaboratively develops plans to enhance, restore, and manage the region's water resources.

### Provide

ES provides essential wastewater treatment and collection services to 111 communities and water planning services and resources to the whole region.



# Water Policy Plan – Built on foundational work (2)



## Water Advisory Feedback

## Water Policy Research Feedback

1. Water Reuse
2. Water and Climate
3. Rural Water Concerns
4. Wastewater Planning and Service Considerations
5. Water Quality
6. Protecting Source Water Areas
7. Water Availability, Access, and Use

# Water Policy Plan – Built on foundational work

## MAWSAC/TAC Goals

- 1. Water Supply Infrastructure:** Communities can act quickly, thoughtfully, and equitably to address aging infrastructure, contamination, changing groundwater conditions, changing water demand, and financial challenges.
- 2. Water Quality:** Communities have the resources they need to provide a safe water supply. A shared process is developed that allows communities, water utilities, and regulators to respond in a more coordinated and effective way to both contaminants of emerging concern and existing contamination.
- 3. Land use and Water Supply Connections:** Public water suppliers, land use planners, and developers have tools a, funding and authority to work together – supported by aligned agency directions - to guide and support development in ways that balance communities' economic needs while protecting the quantity and quality of source waters that are vital to the region's communities.
- 4. Understand and Manage Groundwater and Surface Water Interactions:** Water resource managers, community planners, and leaders understand how groundwater and surface water interact and how those interactions impact water supply sustainability.
- 5. Sustainable Water Quantity\*:** Communities and water agencies understand the sustainable limits of groundwater and surface water sources. Agency directions are aligned and support local plans to supply demand that exceeds sustainable withdrawal rates using the most feasible combination of alternative groundwater or surface water sources, conservation, reclaimed wastewater and stormwater reuse.

*\*Added after 2022 report to Met Council, Legislature.*

# Water Policy Plan

## Proposed Table of Contents

- Introduction
- RDG connection to water
- Principles, goals, and roles
- Regional water context
- Problem identification
- Policies & actions
- Regional wastewater system plan
- Metro area water supply plan
- Apendices

“Plans are nothing.  
Planning is everything.”

~ Dwight D. Eisenhower

# Proposed Water Policy Plan objectives

**SUSTAINABLE WATERS:** Ensure clean, abundant waters for current and future regional needs

**CLIMATE:** Create climate-resilient water sources, ecosystems, and water infrastructure through mitigation, innovative design, and adaptive planning.

**INFRASTRUCTURE:** Maximize water infrastructure investments and identify future investment opportunities that result in benefits at multiple scales.

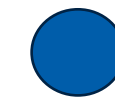
**FUNDING:** Sustainably fund water protection and planning efforts.

**HEALTH:** Protect public and ecosystem health to maintain, restore, and enhance a high quality of life across the region.

**EQUITY:** Ensure that equitable water benefits and water services are accessible and shared amongst all residents and communities.

# Connection between goals & objectives

	Our Region is Equitable and Inclusive	Our <u>Communities</u> are Healthy and Safe	Our Economy is Dynamic and Resilient	We Lead on Addressing Climate Change	We Protect and Restore Natural Systems
Achieve Sustainable Waters	○	○	●	●	●
Reduce Climate Impacts	○	●	○	●	●
Maximize and identify regional investment	○	●	●	○	●
Finance our regional water efforts	○	○	●	○	●
Protect public & ecosystem health	○	●	○	●	●
Water Equity	●	●	○	●	○

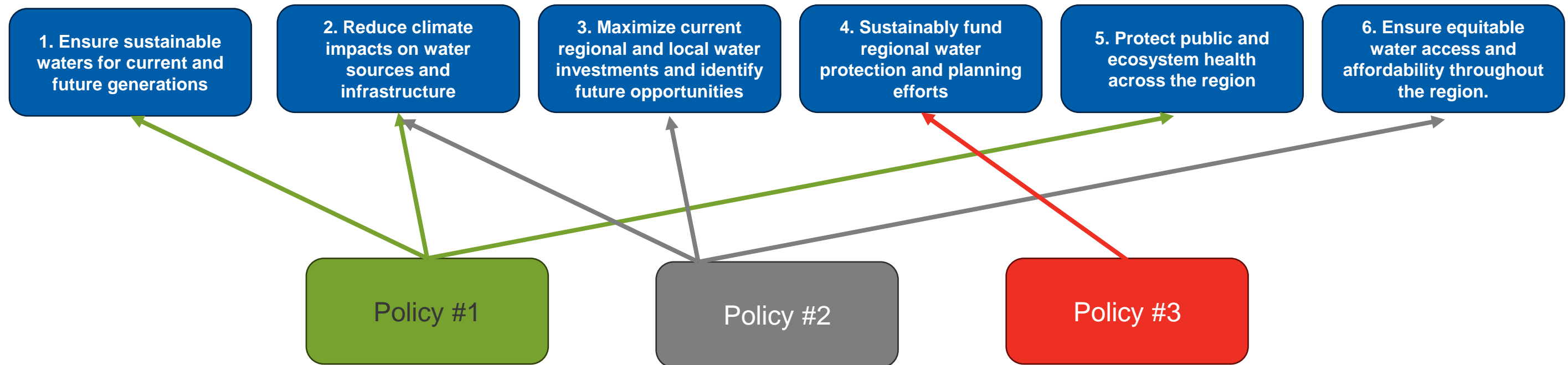


Directly connected



Indirectly connected

# Next steps – drafting policy



- ◆ Share with Environmental Services' executive leadership & Environmental Committee members
- ◆ Continue to engage with advisory committees (MAWSAC/TAC, WAG) and stakeholder groups
- ◆ Have plan ready for public comment period by summer 2024

# Discussion



- **What are your first impressions?**
- **Are we on the right path?**
- **Did we miss an objective?**
- **Should we modify the plan objectives?**



Thank you

**Jen Kostrzewski**

Assistant Manager,  
Water Planning and Policy  
[Jennifer.Kostrzewski@metc.state.mn.us](mailto:Jennifer.Kostrzewski@metc.state.mn.us)

