



Draft Environmental Justice (EJ) Framework

Imagine 2050 Regional Development Guide



Equity Advisory Committee

July 16, 2024

Sarah Gong and Laura Bretheim

Defining Environmental Justice

Environmental Justice is:

**the right for all residents to live
in a clean, safe environment
that contributes to a healthy quality of life**

Concept is centered in grassroots values

Building upon 50 years of a grassroots movement

- Centered in 17 Principles of Environmental Justice
- Honoring roots and upholding contemporary actions of Environmental Justice movement and people
- Acknowledging and working to co-create solutions to repair harm from government agencies
- Applying Environmental Justice principles and actions to a regional government context

“If we want a safe environment for our children and grandchildren, we must clean up our act, no matter how hard a task it might be.”

— HAZEL M. JOHNSON
The “Mother of Environmental Justice”



What is an Environmental Justice framework?

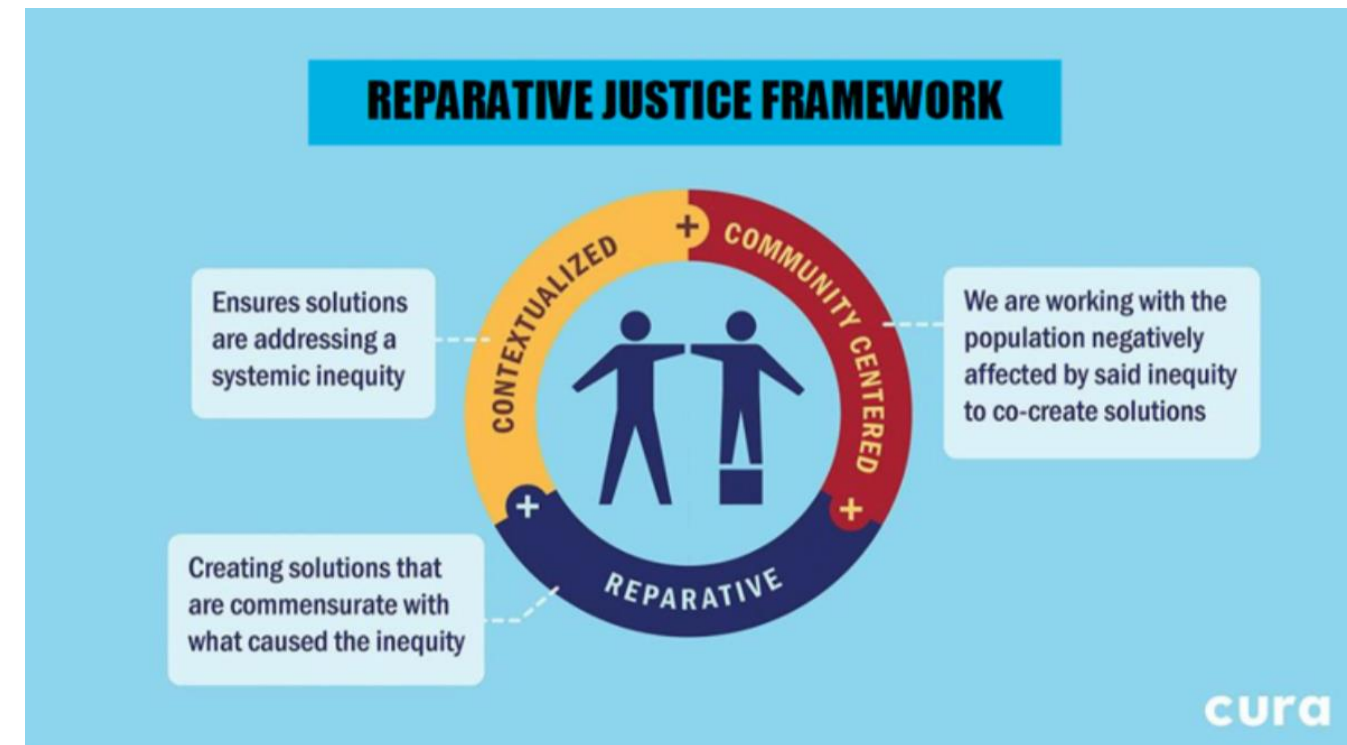
The EJ Framework is:

- An approach to embedding environmental justice into the Council's policy and planning processes.
- A set of assessment tools and approaches to mitigate unjust decisions and conditions, and to maximize environmental benefits.
- A method for uncovering Council actions that contribute to disparate exposure and unequal protection from environmental hazards.
- Taking Civil Rights and subsequent laws further in government.

Build on existing Council work

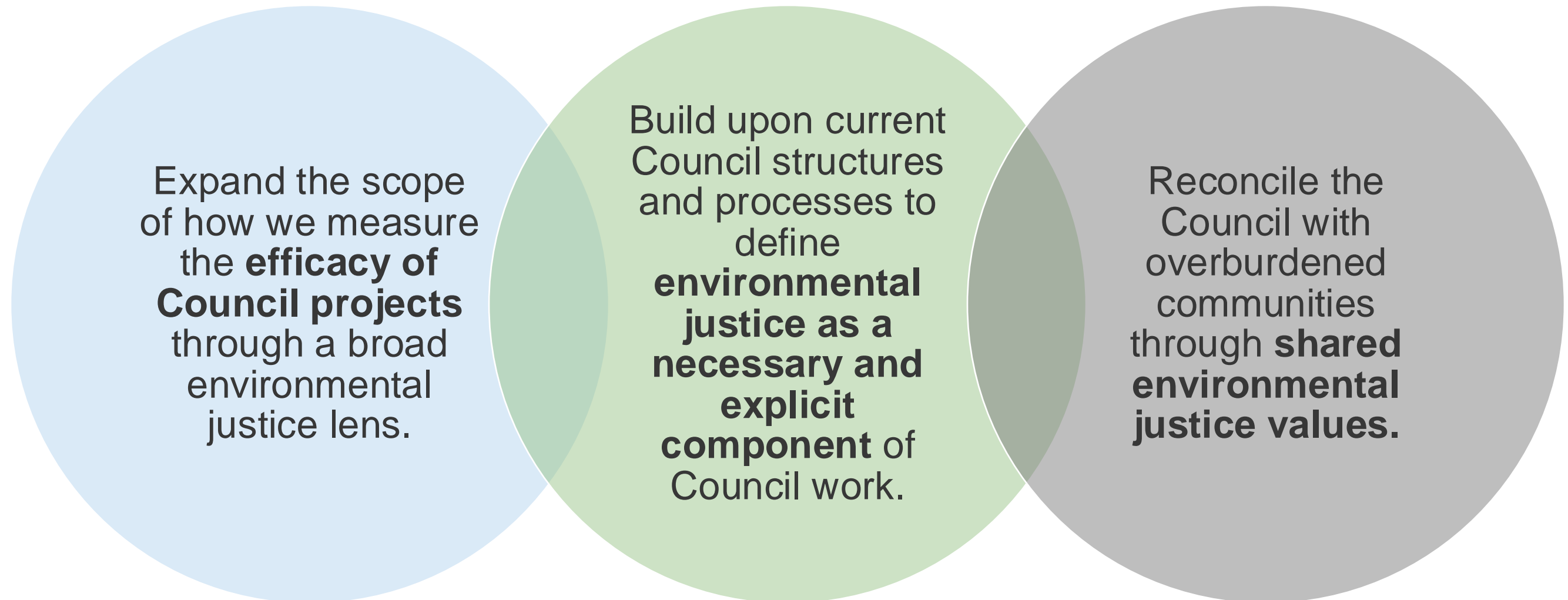
Adopted Council Plans

- Work is rooted in the:
 - Context of relationships between people and their environment
 - Integration of EJ principles into practices and policies as part of the 2050 RDG
- Informed by:
 - Community engagement with overburdened communities
 - Multi-disciplinary EJ Task Force
 - Review existing EJ frameworks
 - Partnership with CURA



Conditions for success

Grounded in the Council's Equity Framework:



Environmental Justice Framework



People-centered,
data-driven
decision making

Contextualized



Prioritized
engagement with
overburdened
communities

Community-centered



Community
benefits beyond
harm mitigation

Reparative

Framework Component 1: People-centered, data-driven decision making



Data from lived experiences of overburdened communities inform decisions

- Understand environmental history by valuing and **integrating lived experience via quantitative and qualitative data**
- Identify, address, and be **transparent** about practices that may perpetuate environmental injustice
- Address environmental harms not accounted for by existing regulations

Framework Component 2: Engagement and collaboration



Prioritized engagement with overburdened communities

- Build **reparative, respectful** relationships aware of community autonomy and capacity
- **Early and iterative** engagement processes with time needed to give informed input
- **Co-create** with community partners
- Collaborate with partner agencies

Framework Component 3: Community benefits

Community benefits beyond harm mitigation

- Ensure that benefits of Council work and investments **meet community's self-identified needs**
- Provide **transparency** about investments and benefits
- Document and publicly report EJ-related benchmarks and metrics



Next steps



Building upon EJ commitment from adopted Council plans

- Direction from adopted Council plans and federal funding guidelines
- Assessment criteria (health, affordability and economic stability, community values, engagement, and cultural preservation, accountability, climate adaptation, land stewardship and Indigenous relations)

Embedding environmental justice principles across our planning efforts

- Conducting policy review (transportation, land use, housing, parks, water resources, climate, natural systems)
- Developing metrics and implementation measures
- Coordination with Council agency partners

Public comment process engagement

Expanding the public comment process

- IAP2 Spectrum of Engagement and coordination with other RDG teams
- Potential methods include:
 - Group conversations
 - 1:1 meetings
 - Attending existing organization meetings
 - Community organization-suggested ways to remain engaged
- Desired actions
 - Providing translations and disability accommodations
 - Physically meeting communities where they feel comfortable
 - Providing times outside of 9-5 work hours
 - Offering compensation
 - Informing communities how their feedback informed our work

Questions for feedback



- What groups do you recommend with engage with for the public comment process?
- What methods of engagement do you recommend?



Sarah Gong

Qualitative Researcher – Community Development
EJ Task Force Co-Lead

Sarah.Gong@metc.state.mn.us

Laura Bretheim

Senior Project Coordinator – Sustainability, Metro Transit
EJ Task Force member

Laura.Bretheim@metrotransit.org

