

Risk Management Update

2016

Risk identification

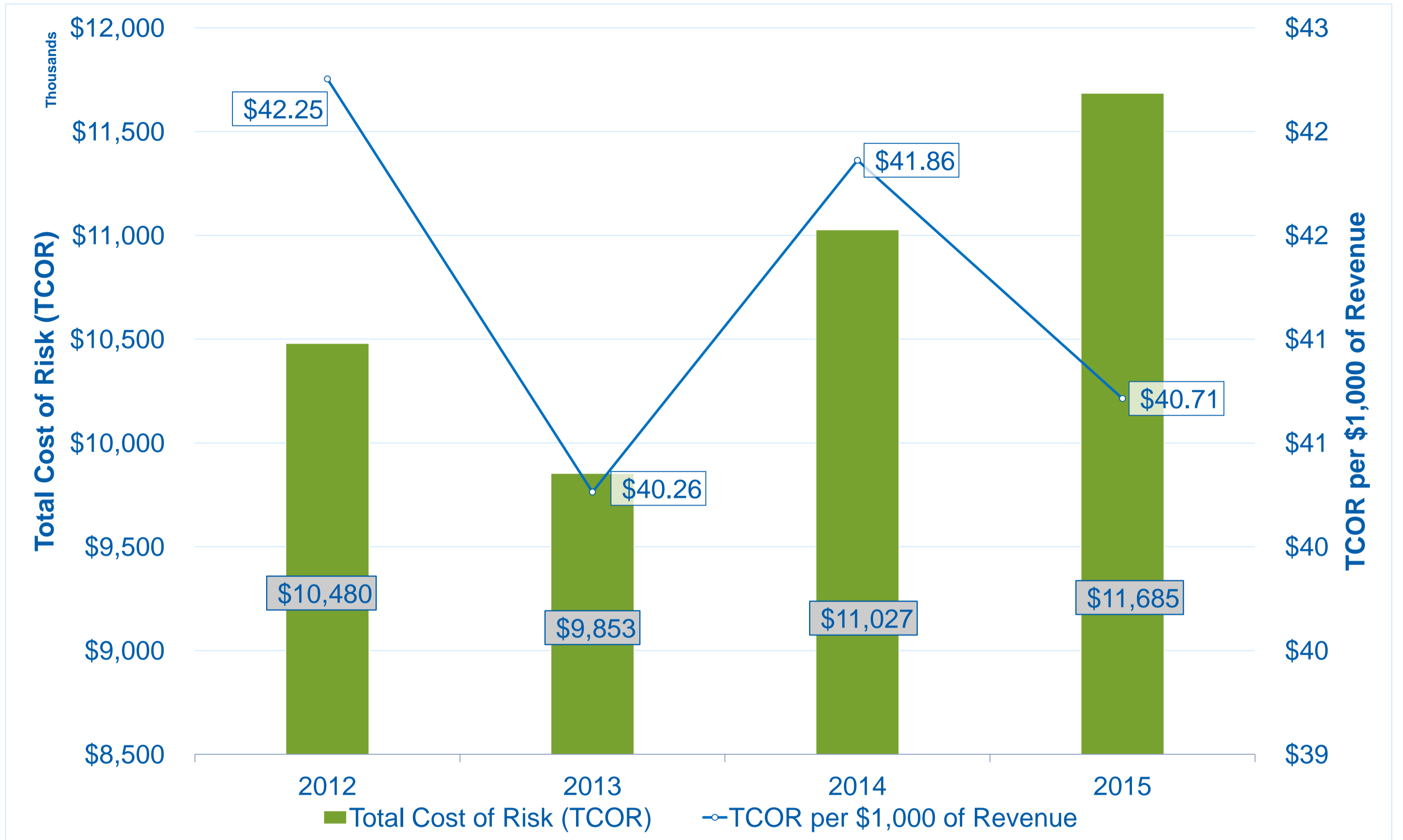
- Property damage
- Injury
 - Council employees
 - Third parties
- Financial
- Impacts the ability to provide services

Department services

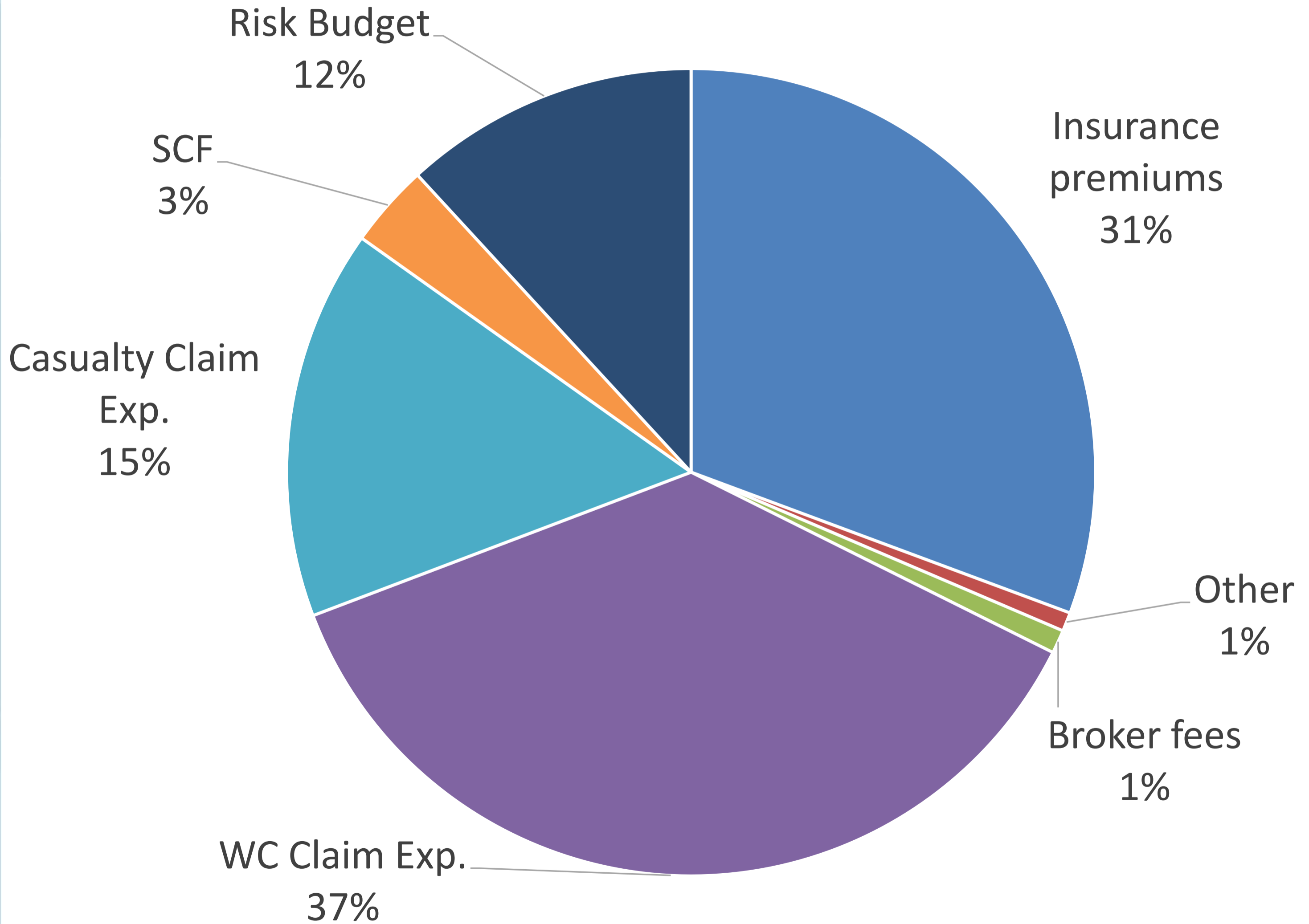
- Enterprise-wide risk management
 - Partnerships
 - Contracts
 - Risk analysis
- Claim administration
 - Workers' Compensation
 - Liability
- Insurance
- Self-insurance

Total Cost of Risk

- Claim payments
- Insurance premiums
- Broker fees
- Department budget



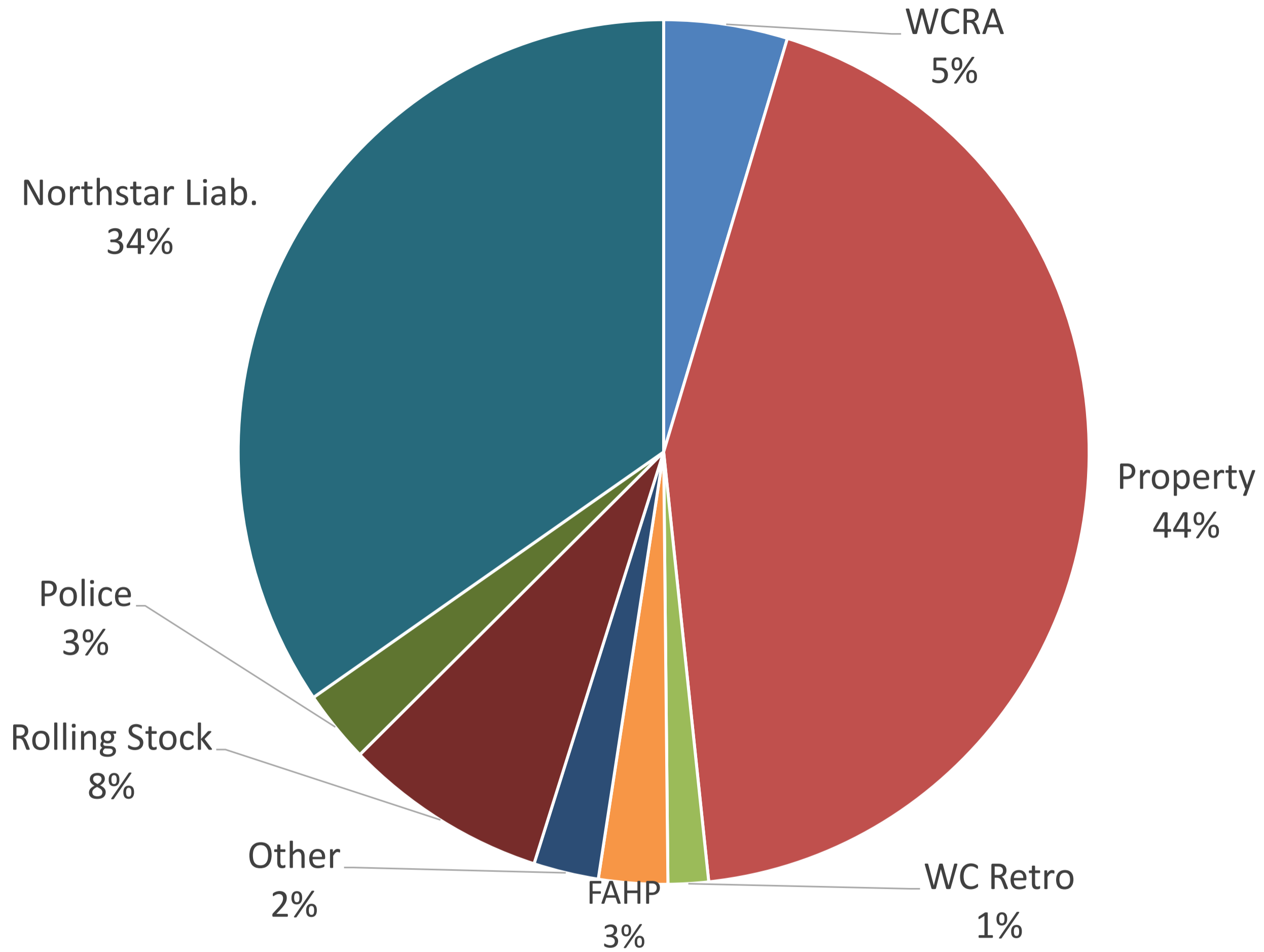
Total Cost of Risk; 2012-2015



Council Insurance

- Coordinated with self-insurance program
- Statutory provisions
 - Immunities
 - Liability limits
- Work directly with underwriters
 - Meetings
 - On-site visits
- Results
 - 25% rate reduction with Rolling Stock insurance (trains)
 - 15% rate reduction with Property insurance
 - Northstar liability premium down 11%

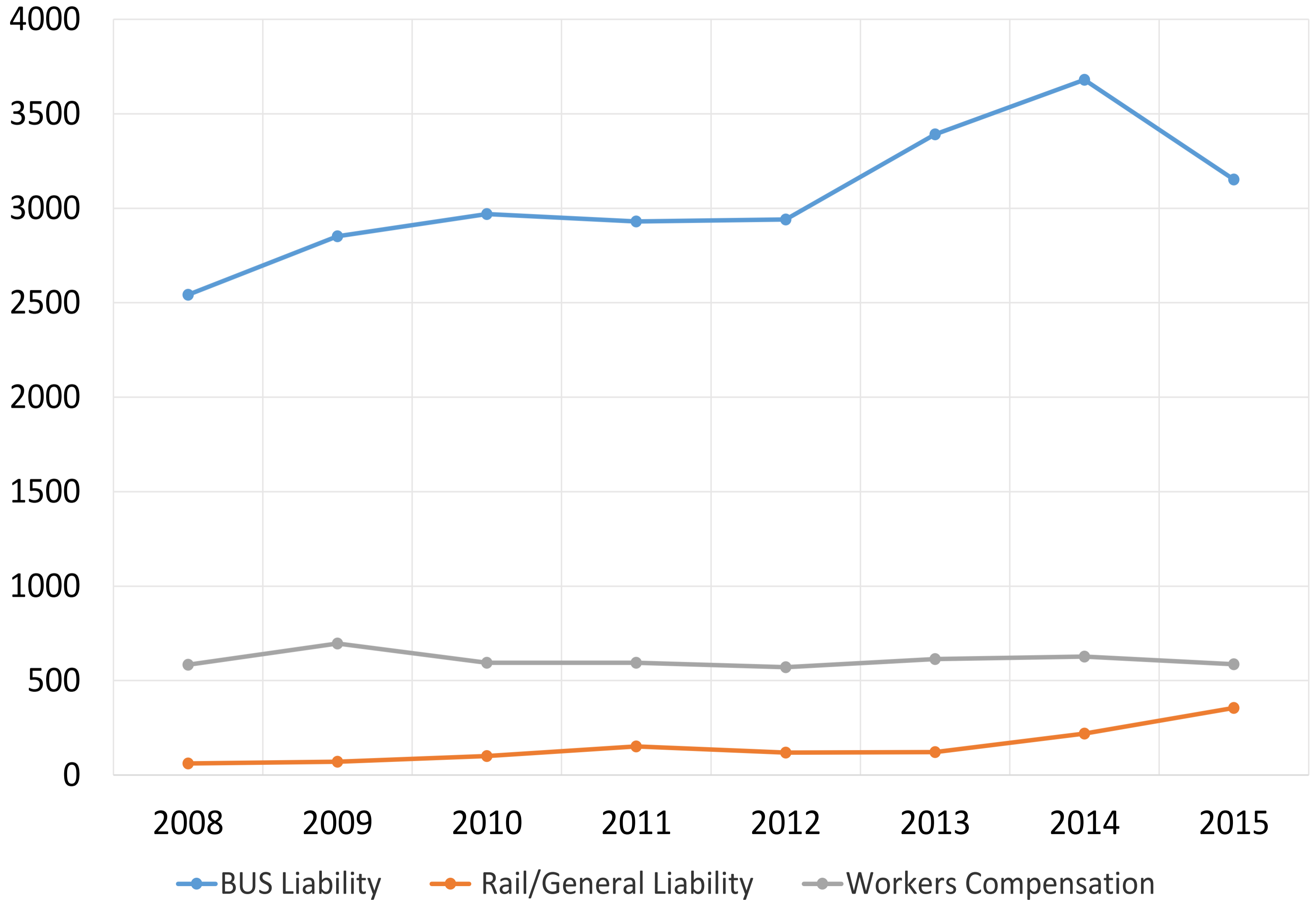
Insurance Premiums



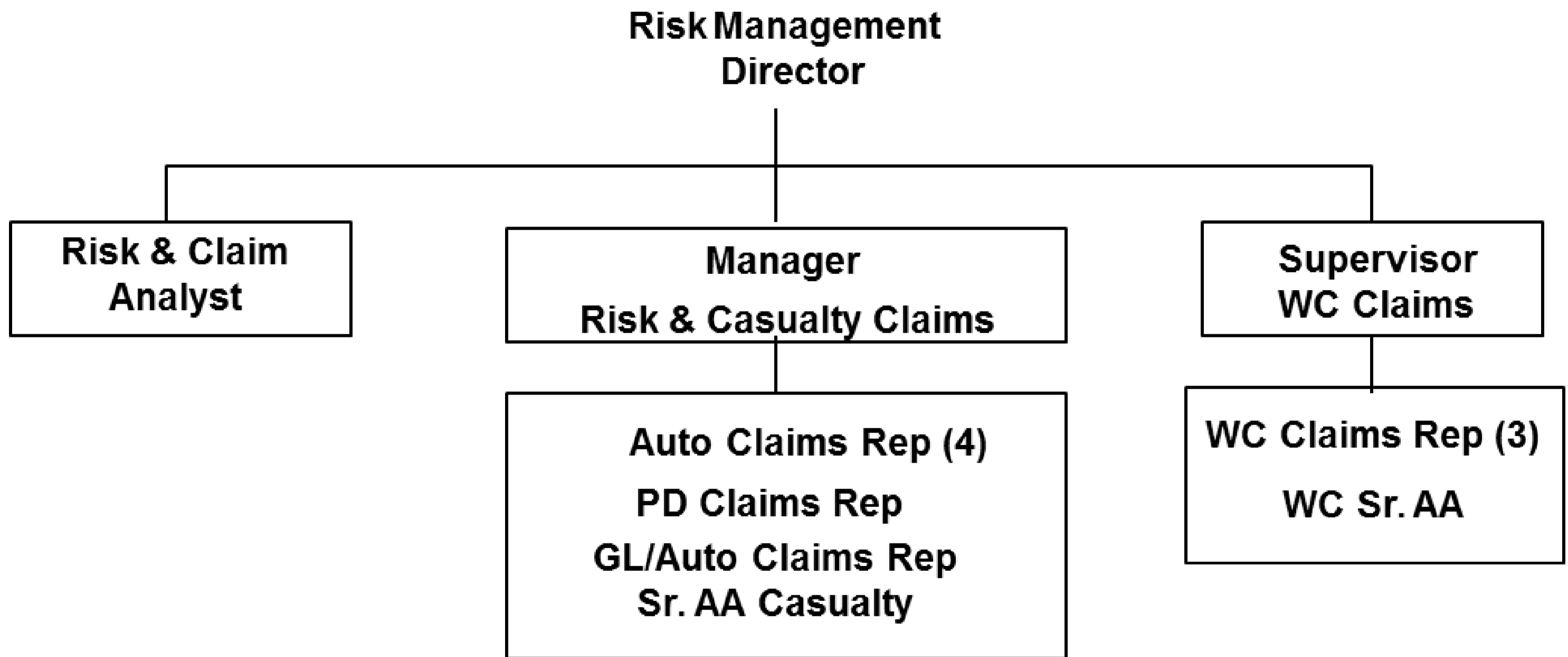
Claim Administration

- Self-insured risks
- Loss prevention
- Claim handling
 - Workers' Compensation
 - Bus/Rail Liability

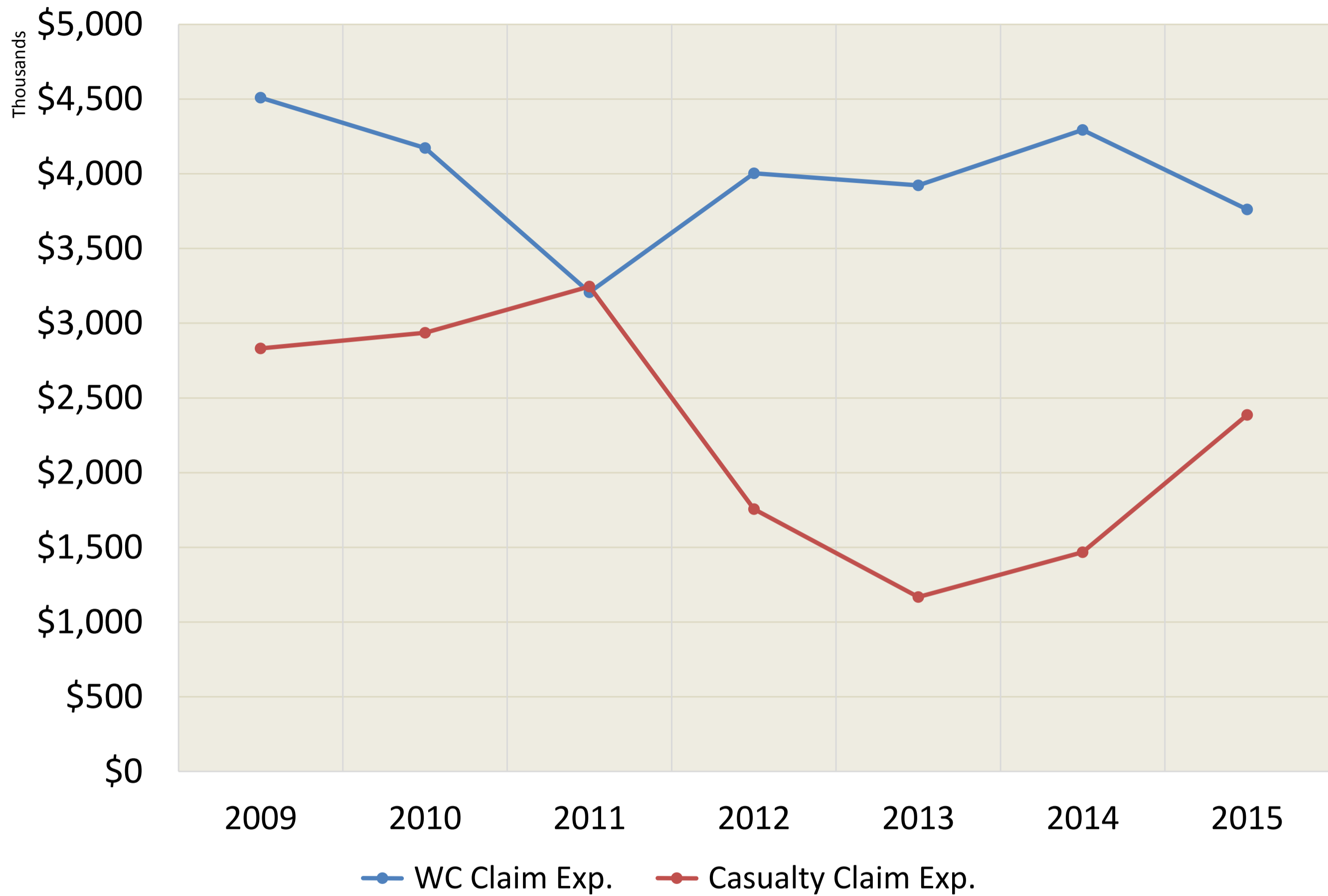
New Claims



Metropolitan Council
Risk Management



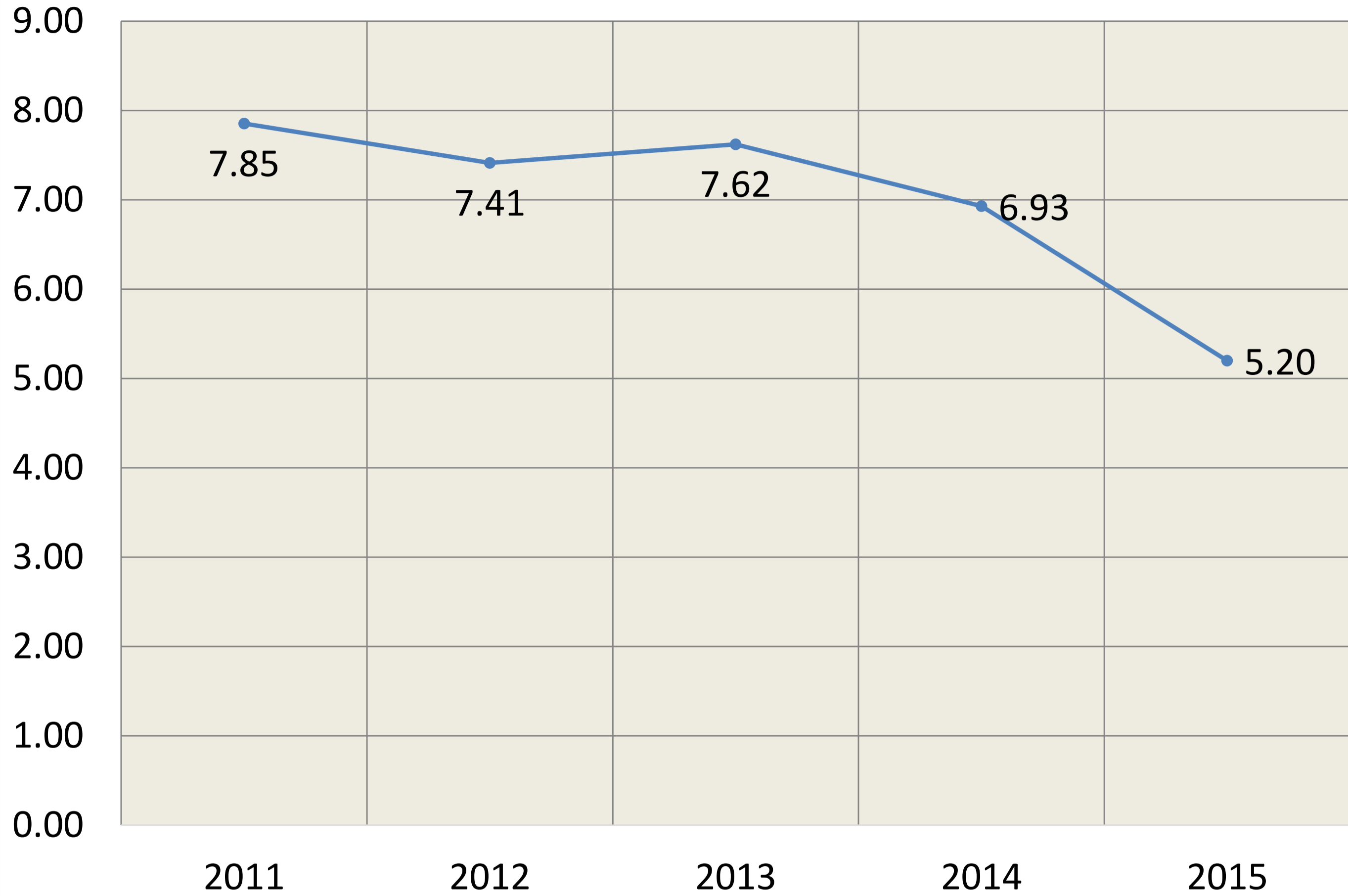
Claim Expense



MnSAFE

- Workplace safety initiative for the state of Minnesota
- Established in 2011 by Governor Dayton
- Three year goal to reduce injuries by 25%
- State agencies saw a 23% injury reduction from 2012-2014
- Over next four years, MnSAFE goal is a 5% annual reduction in workplace injuries

WC claims per 100 employees



Looking ahead

- Technology
- Partnerships
 - Internally
 - Other public entities
 - Insurance companies
- Risk control
 - Workers' compensation
 - Casualty
 - Property
- Emerging risks

Questions?