



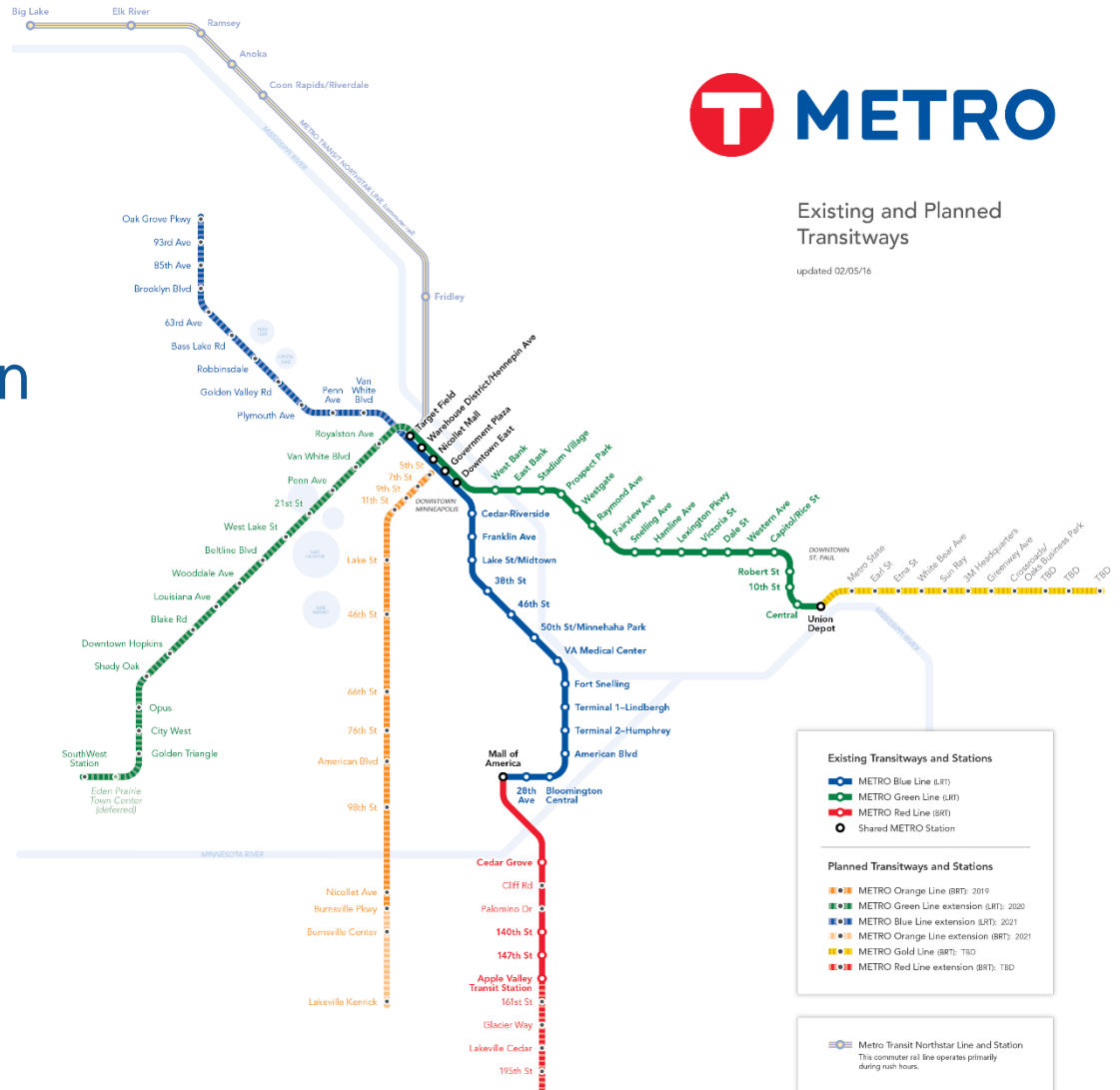
Municipal Consent Plans

February 16, 2016



METRO System: All-Day, Frequent Service

- Light Rail Transit
 - Blue Line (2004)
 - Green Line (2014)
 - Green Line Extension (2020)
 - Blue Line Extension (2021)
- Bus Rapid Transit
 - Red Line (2013)
 - Orange Line (2019)
 - Gold Line (TBD)

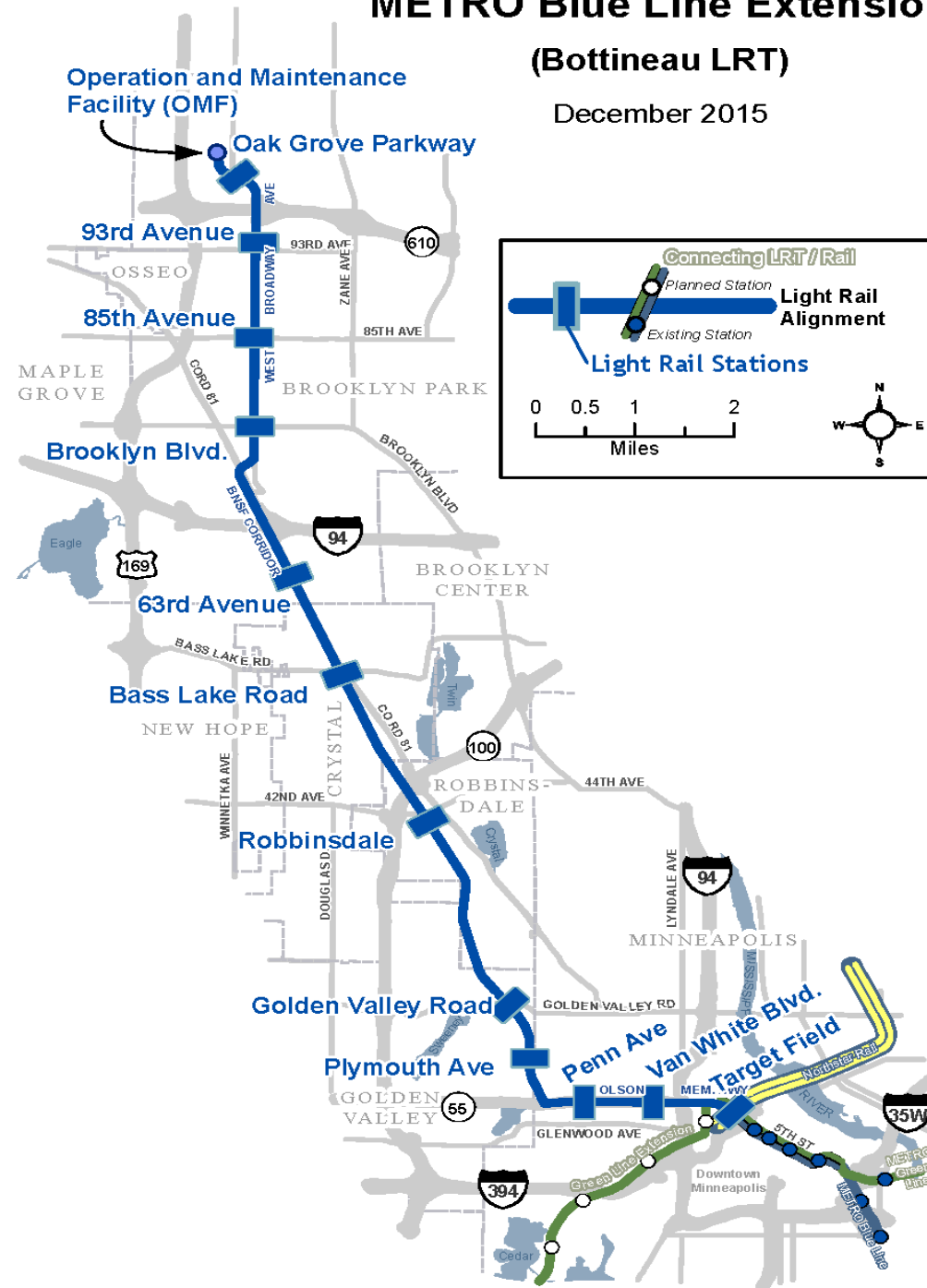


Project Overview

- 11 new LRT stations
- 13.5 miles of double track
- 27,000 est. rides by 2040
- Serving Brooklyn Park, Crystal, Robbinsdale, Golden Valley & Minneapolis
- One seat ride from Brooklyn Park to Bloomington
- New Starts Status: Project Development

METRO Blue Line Extension (Bottineau LRT)

December 2015



Municipal Consent Process

- Minnesota Statute 473.3994
- Local jurisdictional review and approval of physical design component of preliminary design plans

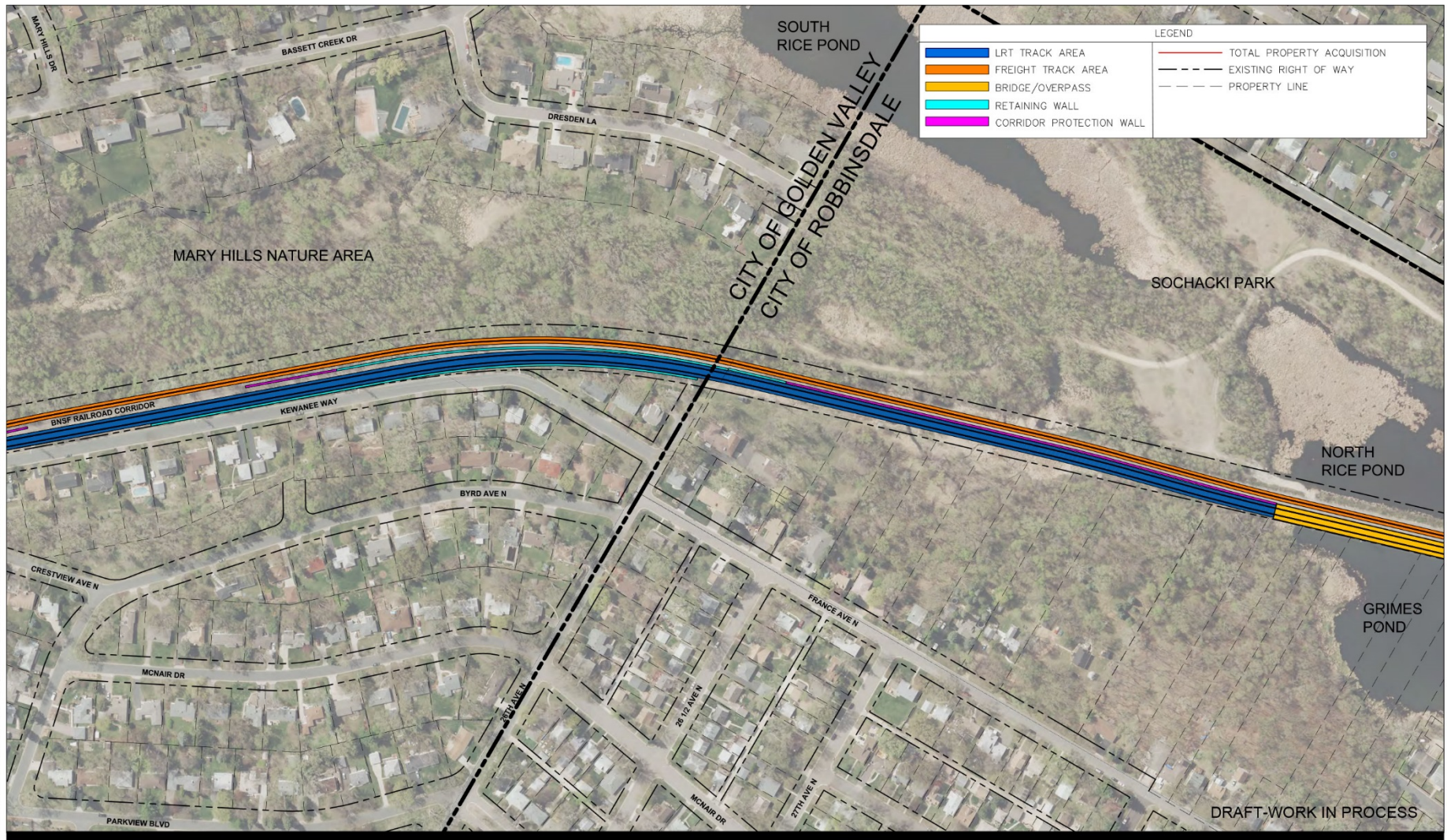


Physical Design Components

- LRT track location
- Station location and layout
- Roadway features
 - Turn lanes
 - Lane widths
 - Traffic signals
- Sidewalks
- Pedestrian crossings
- Operations and Maintenance Facility (OMF) location
- Freight track location
- System elements



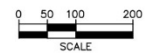
Jun, 13 2016 12:03 pm H:\BPO\550_Design_Consultant\CAO\500-OVERALL\WC\PLAN SHEETS\CIVIL\0-MC-001.dwg By: V-HorseAJ



Kimley»Horn

BLUE LINE LRT EXTENSION

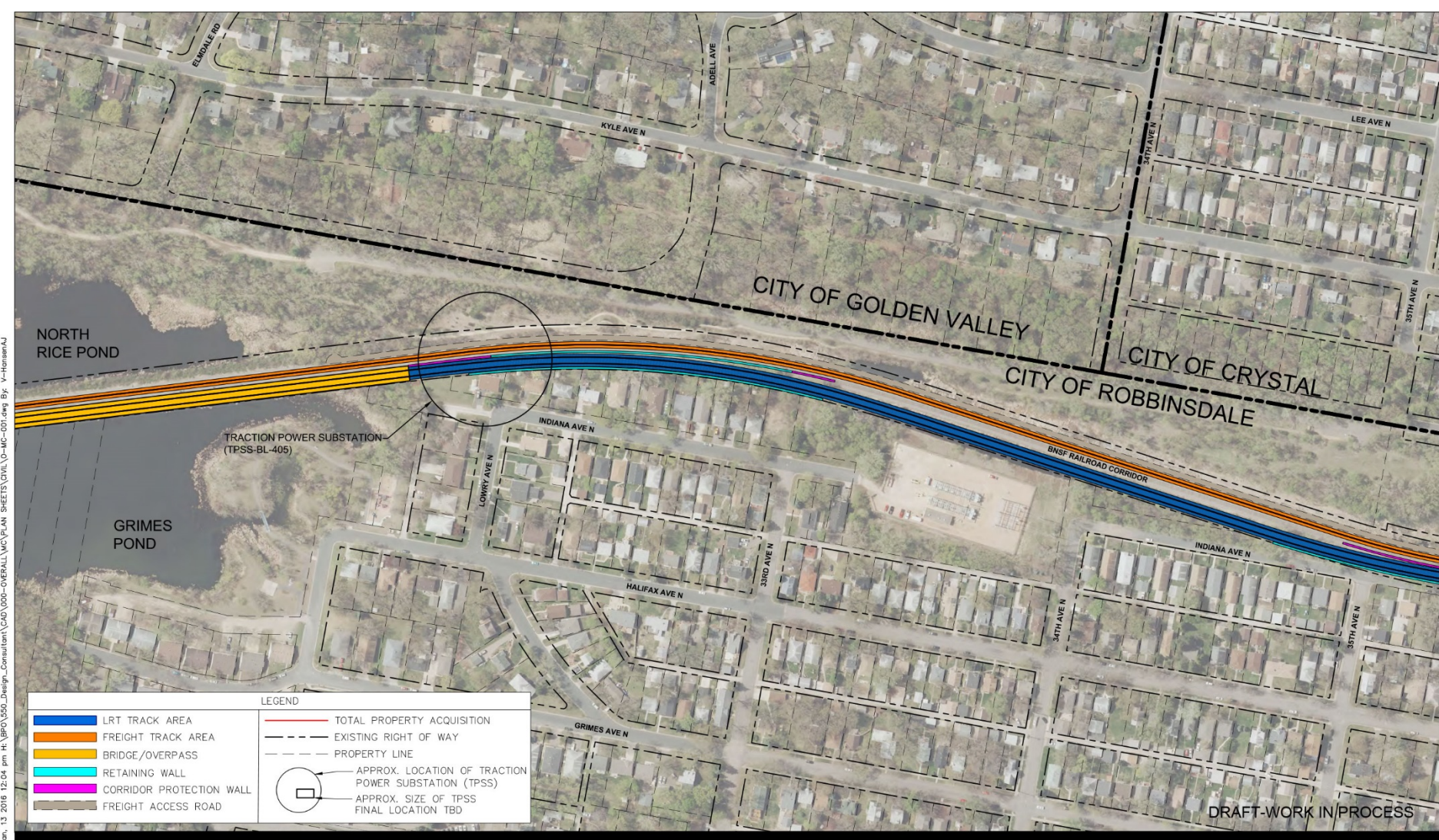
CITY OF GOLDEN VALLEY / CITY OF ROBBINSDALE
MUNICIPAL CONSENT LAYOUT



7



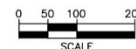
Jan. 13 2016 12:04 pm H:\BPO\550_Design_Consultant\CAO\000-OVERALL\WC\PLAN_SHEETS\DWG\10-001.dwg By: V-Hansen



Kimley»Horn

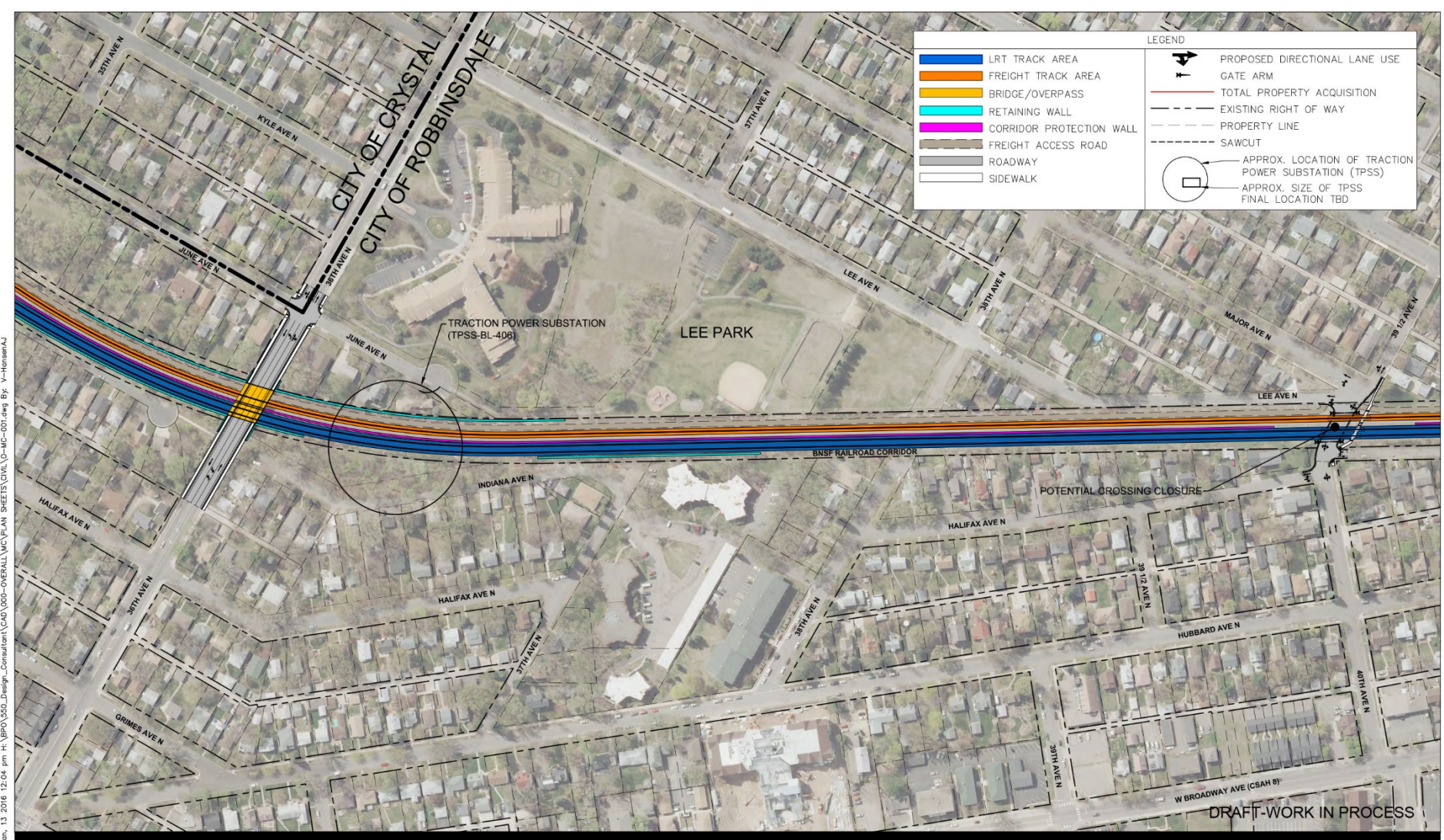
BLUE LINE LRT EXTENSION

CITY OF ROBBINSDALE
MUNICIPAL CONSENT LAYOUT



8





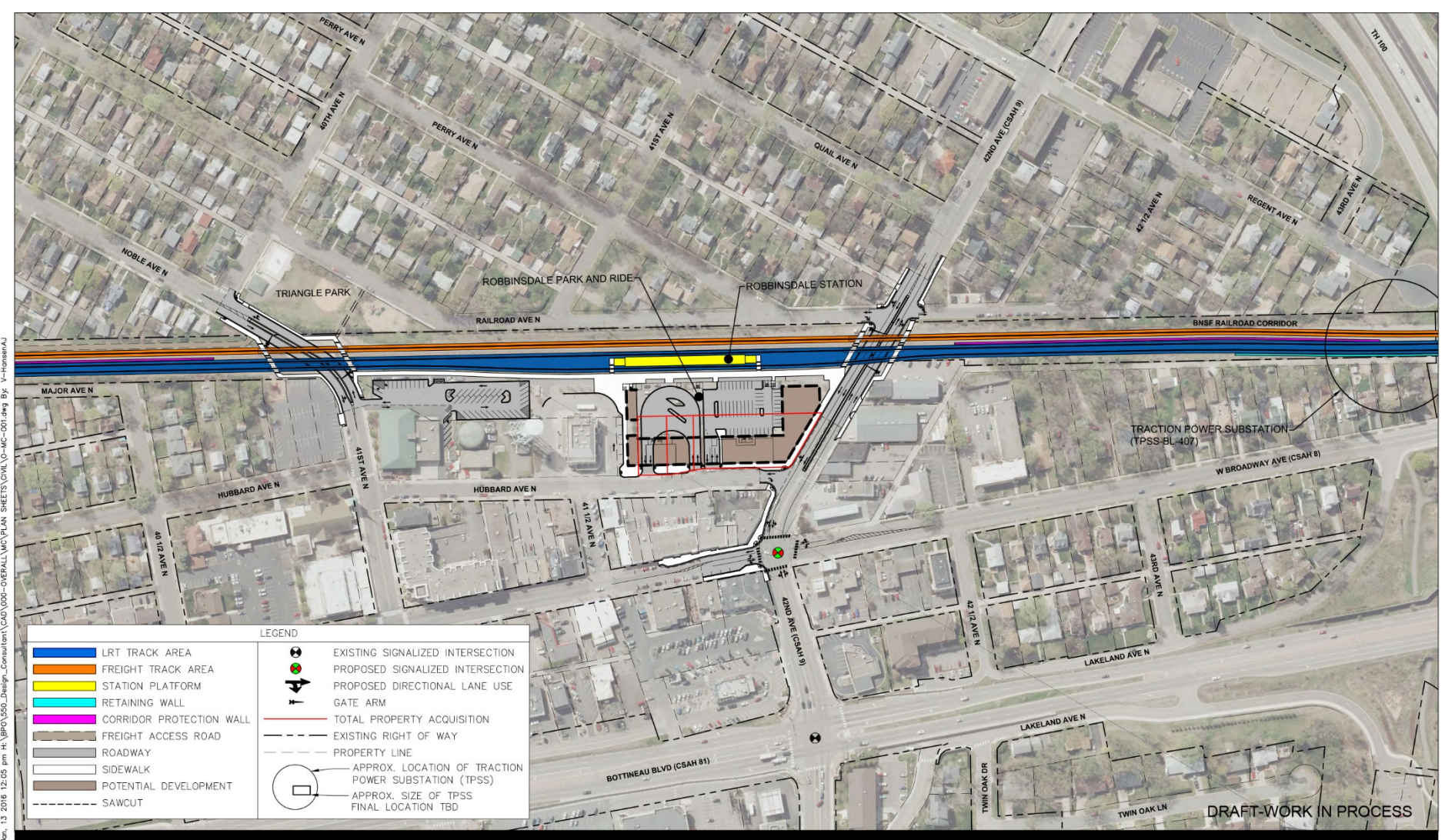
Kimley»Horn

BLUE LINE LRT EXTENSION CITY OF ROBBINSDALE MUNICIPAL CONSENT LAYOUT



9

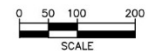




Kimley»Horn

BLUE LINE LRT EXTENSION

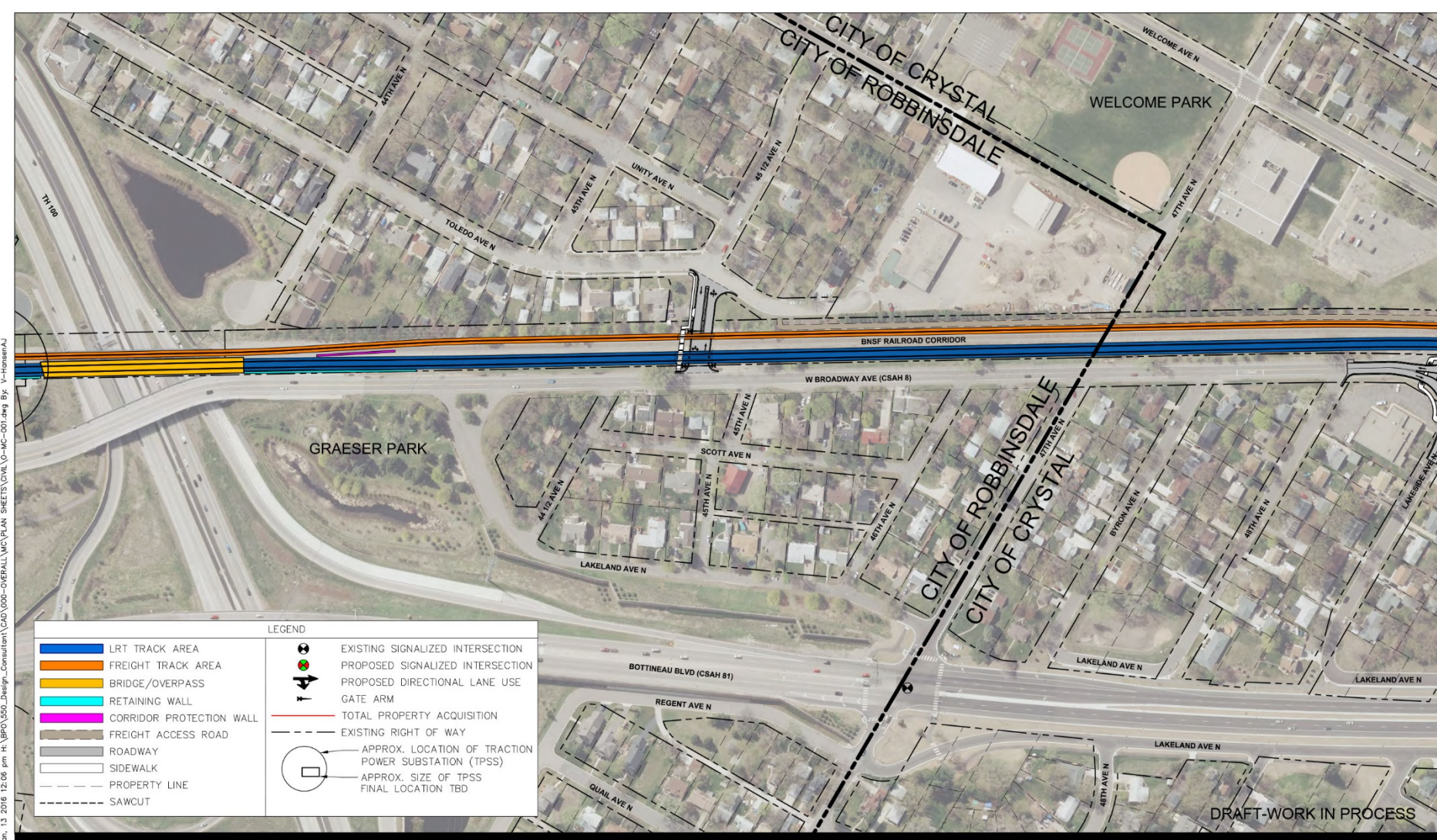
CITY OF ROBBINSDALE
MUNICIPAL CONSENT LAYOUT



10



Jan. 13 2016 12:06 pm H:\BPO\550_Design_Consultant\CAD\000-OVERALL\MC\PLAN_SHEETS\DWG\0-MC-001.dwg By: V-Hansen



Kimley»Horn

BLUE LINE LRT EXTENSION

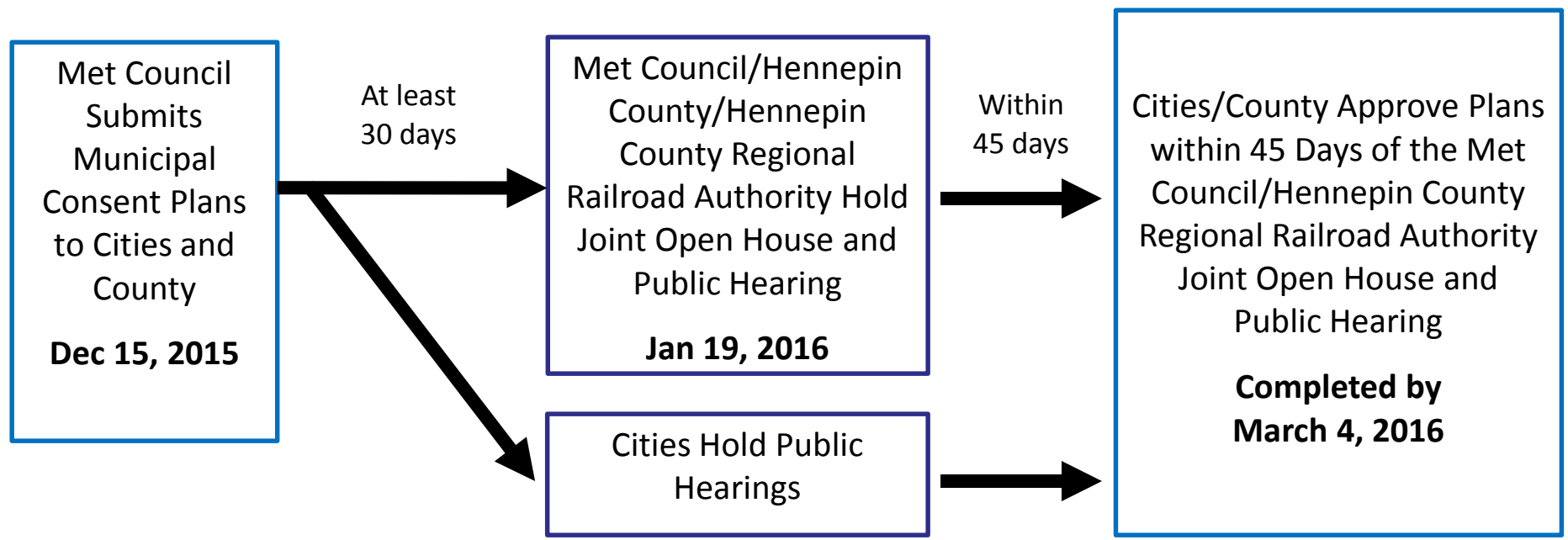
CITY OF ROBBINSDALE / CITY OF CRYSTAL
MUNICIPAL CONSENT LAYOUT



11



Municipal Consent Schedule



Next Steps

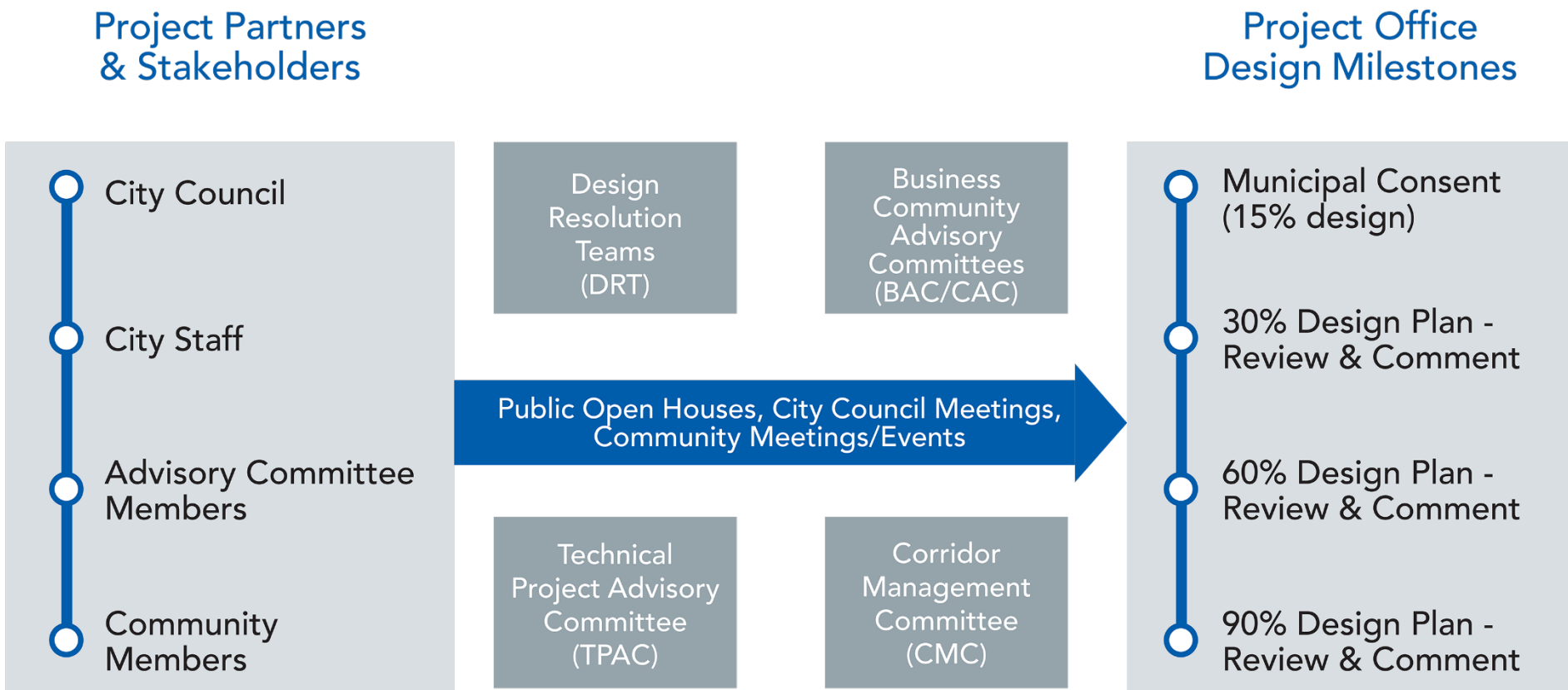


Next Steps After Municipal Consent

- Station design
- Streetscape design
- Utility relocation design
- Design advancement:
 - LRT track features
 - Roadway details
 - OMF features
 - Bridges and tunnels
 - System elements
 - Freight rail features





Continued Design Coordination



More Information

[About Us](#) | [News & Events](#) | [Data & Maps](#) | [Publications](#) | [Doing Business](#) | [Council Meetings](#) | [Contact Us](#) | [Employment](#)

 [COMMUNITIES](#) [PARKS](#) [TRANSPORTATION](#) [WASTEWATER & WATER](#) [HOUSING](#) [PLANNING](#)



METRO BLUE LINE EXTENSION

[Route](#)

[Stations](#)

[Environmental](#)

[Timeline](#)

[Project Partners](#)

METRO BLUE LINE EXTENSION

Bottineau Transitway – Minneapolis & Northwestern Communities

The METRO Blue Line Extension (LRT) will operate northwest from downtown Minneapolis through north Minneapolis, Golden Valley, Robbinsdale, Crystal and Brooklyn Park, drawing riders northwest of Brooklyn Park. The proposed alignment is primarily at-grade and will have up to 11 new stations in addition to Target Field Station and about 13 miles of double track. The line will interline with the METRO Blue Line and connect Minneapolis and the region's northwest suburbs with existing LRT on the METRO Green Line, future LRT on the METRO Green Line Extension, bus rapid transit on the METRO Red Line, the Northstar commuter rail line and local and express bus routes.

Latest News
Feds: Met Council can begin designing METRO Blue Line Extension

Route
[Click on the map below for more information](#)

Website: BlueLineExt.org

Email: BlueLineExt@metrotransit.org

Twitter: [@BlueLineExt](https://twitter.com/BlueLineExt)

