



Web: swlrt.org

Twitter: @SouthwestLRT

Construction Hotline: 612-373-3933

Weekly Construction Photo: Freight Rail Shift, from Blake Road in Hopkins to Wooddale Avenue in St. Louis Park



Crews tamp ballast and install ties to shift freight rail to its new alignment during a freight rail outage on April 18.

[Eden Prairie](#)

Eden Prairie Construction: Map 1 of 2



SouthWest Station to Eden Prairie Town Center Station

Construction Overview: At the SouthWest Station we are constructing a new park-and-ride ramp adjacent to the existing ramp and a combined bus and LRT station. Moving east, the Prairie Center Drive LRT Bridge extends from the SouthWest Station area over Technology Drive and Prairie Center Drive. Moving east, LRT will enter the Eden Prairie Town Center Station area.

Current activities to expect in this area:

- The right-turn lane on the eastbound Highway 212 ramp to Prairie Center Drive remains closed.
- The SouthWest station area remains a busy construction site with ongoing piling and concrete work.
- Work continues on the Prairie Center Drive as crews work on bridge walkways.
- Sidewalks near the intersection of Prairie Center Drive and Technology Drive remain closed, please follow signage to ensure your safety. ([See the SouthWest pedestrian detour map](#)).

Eden Prairie Construction: Map 2 of 2



LRT Bridge at I-494 to Shady Oak Road

Construction Overview: In this portion of Eden Prairie, an LRT bridge will cross over I-494, parallel to Flying Cloud Drive; this bridge is almost complete. Flying Cloud Drive is being reconstructed and LRT track installed. LRT will travel on bridges over Flying Cloud Drive and Nine Mile Creek. The Golden Triangle Station is being constructed as well as an LRT bridge over Shady Oak Road and Highway 212.

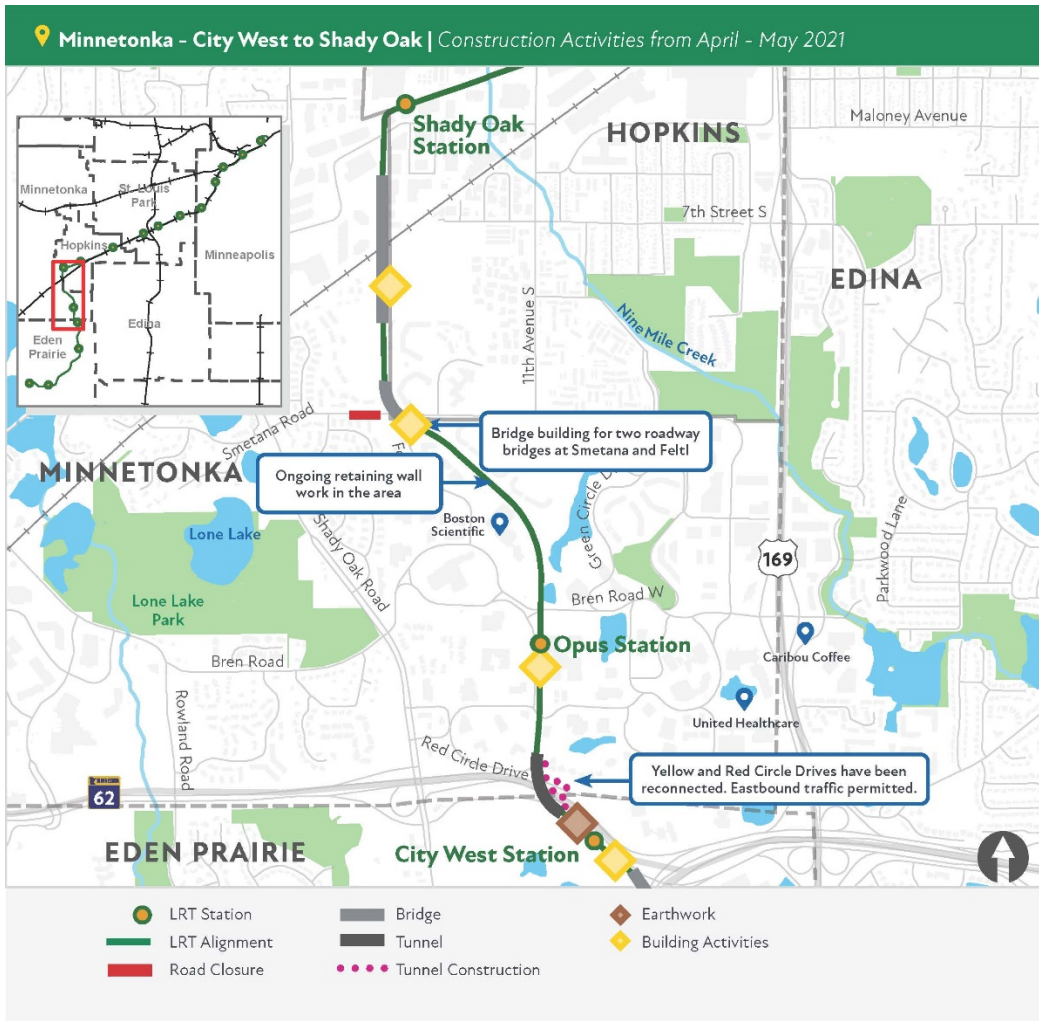
Current activities to expect in this area:

- Traffic is reduced to one lane in both directions on Flying Cloud Drive between Town Center Place to Valley View Road through the summer. Intersections from Flying Cloud Drive to Technology Drive and Viking Drive will remain open, subject to intermittent, short-term lane reductions. Left turns in and out of Technology Drive at the Flying Cloud Drive intersection are prohibited through the summer.

- West 70th Street is expected to close in early-to-mid May to advance LRT track work. This closure will last for most of the 2021 construction season.
- Crews are advancing the southern portion of the Highway 62 LRT tunnel and area retaining walls. Anticipate noise and vibration associated with installation of piling and sheeting between Highway 62 and southbound Highway 212.
- A full closure of Highway 212 between Highway 62 and Shady Oak Road is currently anticipated to begin in early June to set bridge girders over the highway; the closure is anticipated to last four days. Timing and detour information is forthcoming. The ramp to eastbound Highway 212 from Shady Oak will close in mid-May to begin staging work for this closure.
- An overnight closure of the ramp from westbound Highway 62 to westbound Highway 212 is anticipated in early-to-mid May. Crews will use the closure to construct a temporary ramp so that retaining wall work can be advanced in the area. Signage, and detour information will be posted in advance. [See Eden Prairie upcoming detour information.](#)

Minnetonka

Minnetonka Construction: Map 1 of 1



City West Station in Eden Prairie to Shady Oak Station in Hopkins

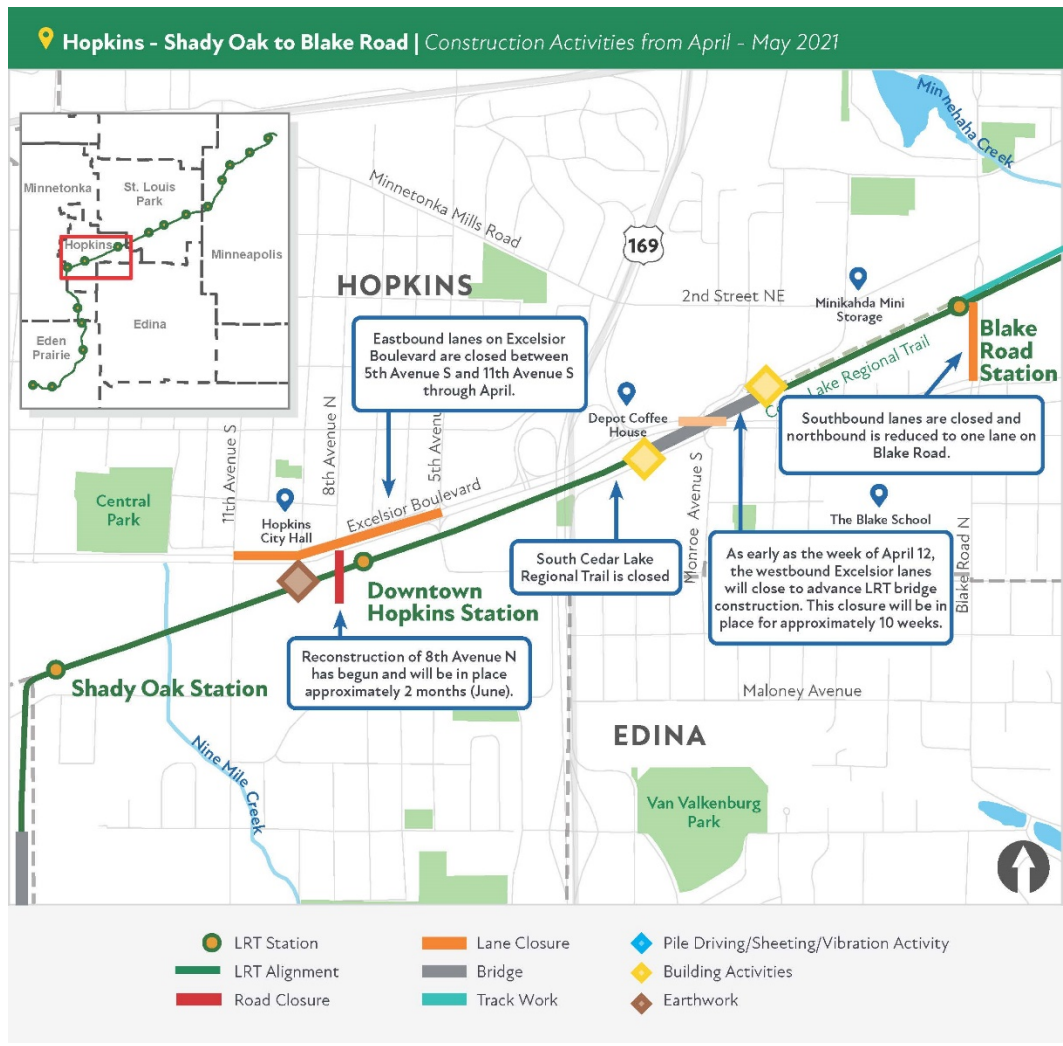
Construction Overview: The City West Station area continues with preparation work for retaining walls. Major elements in this segment include an LRT tunnel under Highway 62, the Opus Station, many large retaining walls, the Smetana/Feltl roadway bridges over LRT and the Hopkins/Minnetonka LRT Bridge ending at the Shady Oak Road Station.

Current activities to expect in this area:

- The westbound lane on Green Circle Drive near the intersection with Bren Road West is closed through the 2021 construction season to complete work in the LRT corridor.
- Smetana Road from Feltl Road to Nolan Drive remains closed until July. A bypass is in place east of the intersection of Smetana and Feltl Roads to accommodate local traffic. [See Minnetonka detour maps here.](#)
- Crews continue to work on the Minnetonka-Hopkins LRT bridge. Expect noise from piling as bridge piers are constructed.

Hopkins

Hopkins Construction: Map 1 of 1



Shady Oak Road Station to Blake Road Station

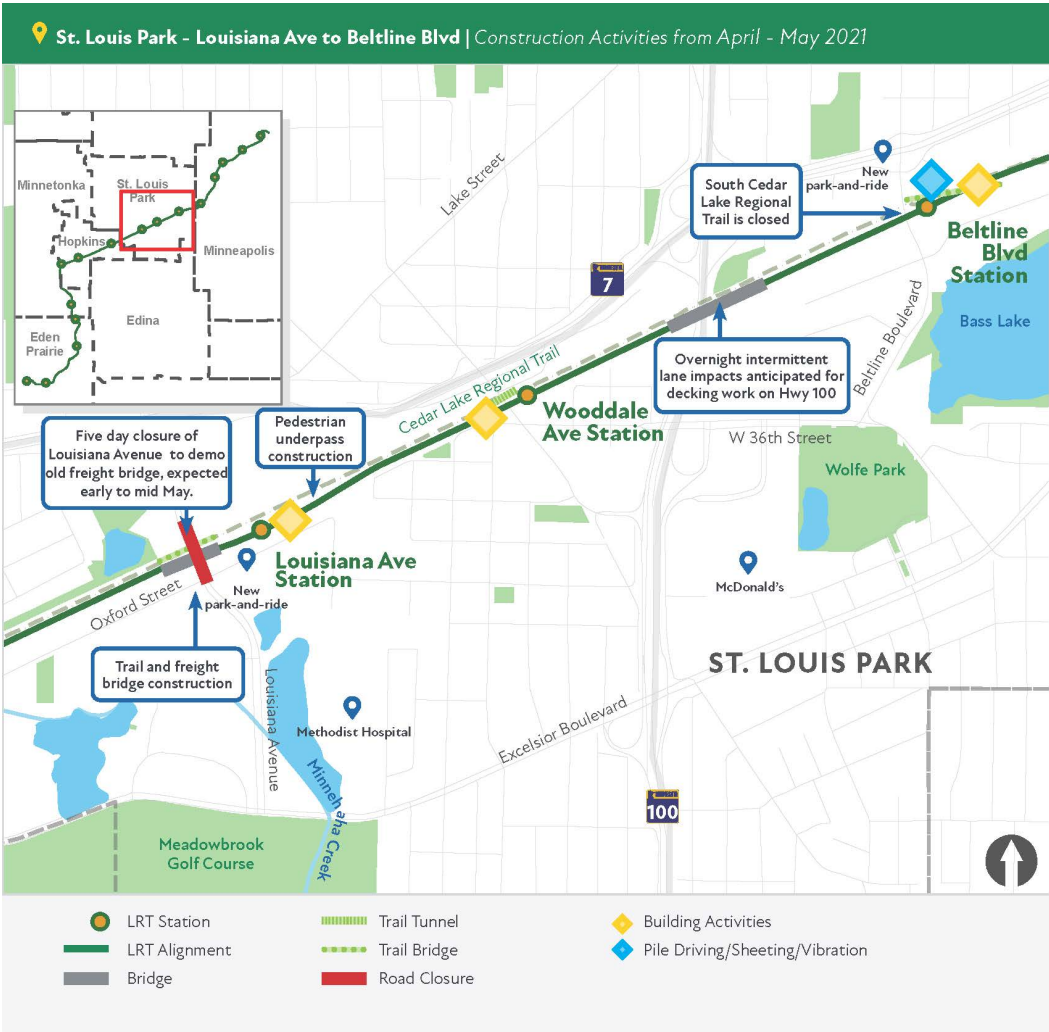
Construction Overview: There are three stations in Hopkins: Shady Oak Road, Downtown Hopkins and Blake Road. Major structures in Hopkins include an LRT bridge over Excelsior and a regional trail underpass at Blake Road. In addition to LRT track construction there is also freight rail and regional trail work in the area. There are multiple LRT and freight railroad crossings at roadways.

Current activities to expect in this area:

- 8th Avenue South is closed at Excelsior Boulevard into June for roadwork. The westbound lanes of Excelsior Boulevard are closed between 9th Avenue and 5th Avenue for roadway reconstruction. The eastbound lanes are open. [See detour map.](#)
- Crews are conducting earthwork for stormwater management and installing foundations for the Overhead Catenary System (OCS) poles between 11th Avenue South and 5th Avenue South.
- The reconstruction of the regional trail underpass at Blake Road North is scheduled to resume as early as Monday, May 10. Southbound lanes of Blake Road will close at 2nd Street. There will be a single northbound lane open to traffic. [See detour map](#)
- Westbound Excelsior Boulevard is closed at Jackson Avenue. Traffic will remain detoured into June while crews advance the construction of the cantilevered structure for the LRT bridge over Excelsior Boulevard. [See detour map](#)

St. Louis Park

St. Louis Park Construction: Map 1 of 1



Louisiana Avenue to Beltline Boulevard

Construction Overview: Like in Hopkins, the project includes the construction of LRT track, freight rail track, and the regional trail. There are also three stations in St. Louis Park: Louisiana Avenue, Wooddale Avenue and Beltline Boulevard. Structures in this area include LRT and freight rail bridges over Louisiana Avenue, a connection between freight lines, a pedestrian/trail underpass east of Louisiana Avenue, freight, LRT and trail bridges over Minnehaha Creek, a regional trail underpass at Wooddale Avenue, freight, LRT and trail bridges over Highway 100 and a regional trail bridge crossing over Beltline Boulevard.

Current activities to expect in this area:

- Work to construct a new LRT bridge over Minnehaha Creek is underway. Demolition of the old freight railroad bridge will begin in early May. Flaggers will be onsite to direct boat traffic in the creek, expect delays.
- The old freight railroad bridge over Louisiana Avenue is slated to be demolished beginning on Monday, May 10. Louisiana Avenue between Oxford Street and West Lake Street will close for five days to accommodate demolition.
- Crews plan to pour concrete for the LRT bridge deck over Highway 100 on Wednesday, May 5; overnight lane closures from 9:00 PM to 6:00 AM are expected for the concrete pours. The on and off-ramps to Highway 7 will also close for this work.
- Piling for retaining wall work will begin in May on Monterey Avenue.

[Minneapolis](#)

Minneapolis Construction: Map 1 of 5



Chowen Avenue to Cedar Lake Parkway

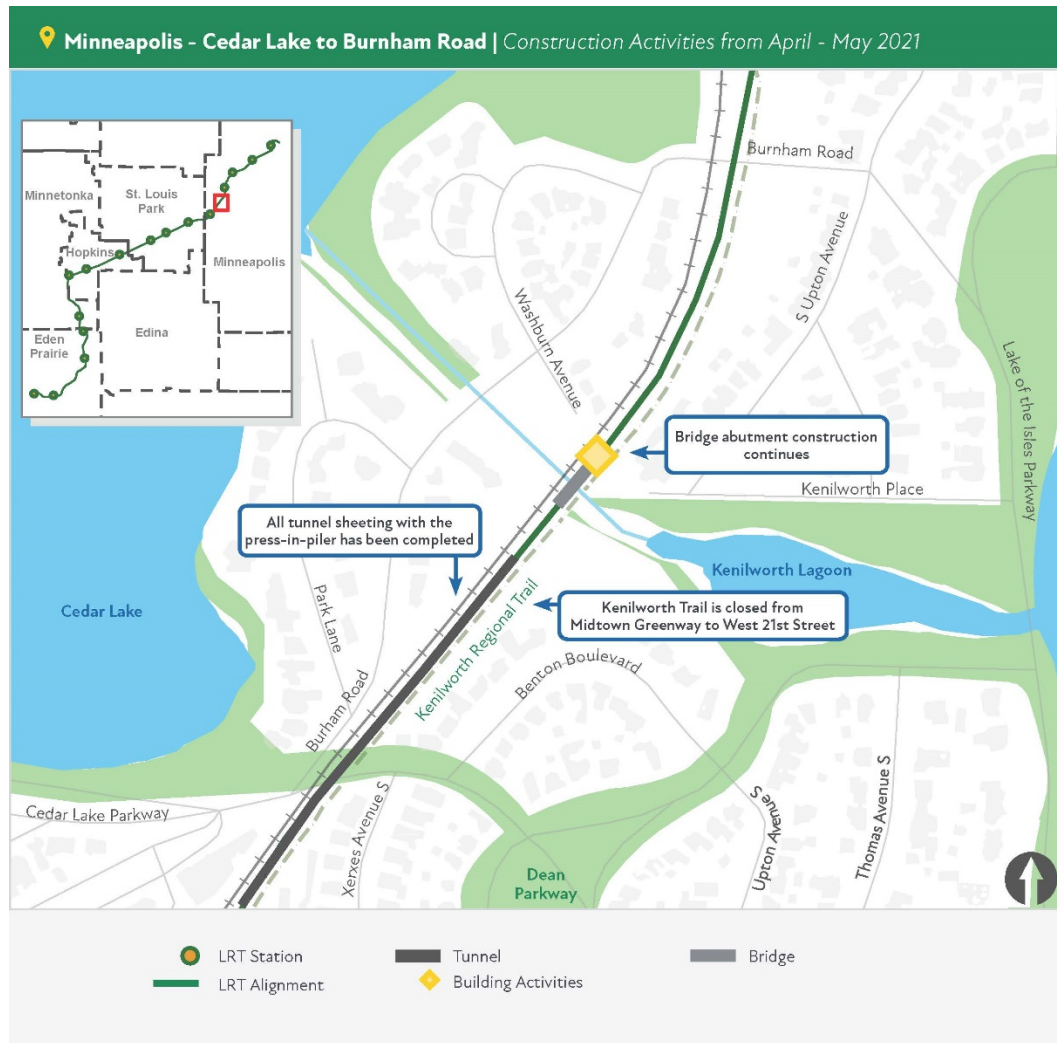
Construction Overview: In addition to the West Lake Street Station, crews will be reconstructing the Chowen/Abbott roadway connection. The LRT tunnel is being constructed in this area, running between the West Lake Street Station and the Cedar Lake Channel. To complete work in this area there is also freight rail infrastructure and trail facilities.

Current activities to expect in this area:

- In early May utility work is anticipated to begin along Abbott and Chowen Avenues adjacent to the rail corridor. This section of road will close to traffic and is expected to remain closed for the duration of Southwest LRT Construction. This work will also involve limited tree and vegetation removal.
- Sheeting installation for the West Lake Street Station using a vibratory hammer is anticipated to begin the week of May 3 and will last a few days. 2-3 days.

- Excavation activities continue for the Kenilworth LRT Tunnel, progressing in the direction of Cedar Lake Parkway. Continue to expect construction equipment hauling materials through the corridor. As part of this work divers continue to inspect the excavation below the water line during the extended hours of 6:00 PM and 8:00 PM on weekdays.

Minneapolis Construction: Map 2 of 5



Cedar Lake Parkway to Burnham Road

Construction Overview: The LRT tunnel continues in this segment. Other elements include the construction of retaining walls (complete), and freight, LRT and trail bridges over the Cedar Lake Channel.

Current activities to expect in this area:

- Truck traffic and noise from moving materials to and from laydown areas.

- Construction of the LRT bridge at the Cedar Lake Channel continues with concrete and deck work throughout the summer.

Minneapolis Construction: Map 3 of 5



Burnham Road to Bryn Mawr Station

Construction Overview: In addition to the LRT, freight rail and trail construction, this area has two stations: West 21st Street and Bryn Mawr. The Bryn Mawr Station includes a pedestrian bridge that will extend over the freight tracks from the bluffs to the station platform.

Current activities to expect in this area:

- Truck traffic and noise from moving materials to and from laydown areas.
- Work on the 21st Street Station has resumed starting with excavation and concrete work. The West 21st Street Station will be under construction throughout 2021.

Minneapolis Construction: Map 4 of 5



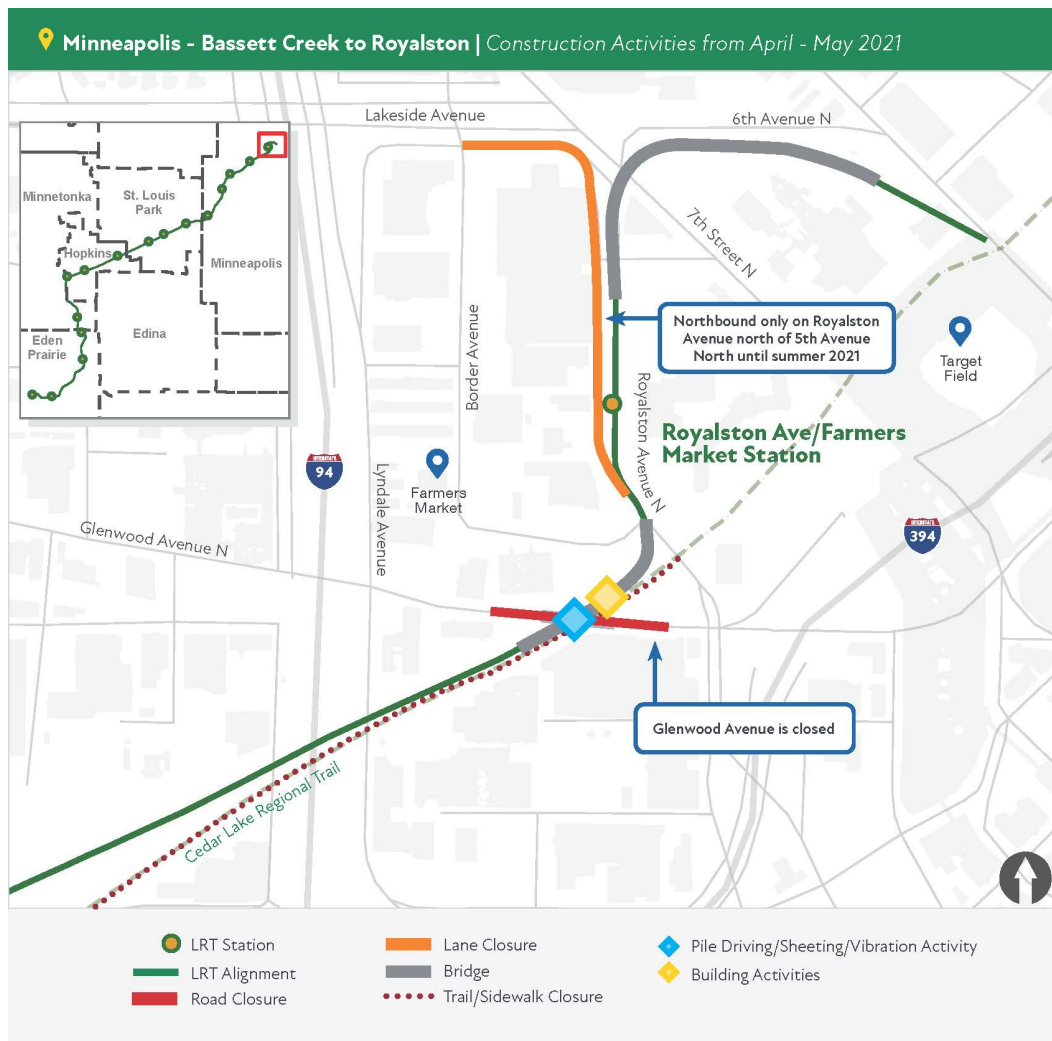
Bryn Mawr Station to Bassett Creek Valley Station Area

Construction Overview: There are two stations serving residents in this area; Bryn Mawr Station and the Bassett Creek Valley Station. In addition, area construction includes LRT track, trails and the corridor protection wall.

Current activities to expect in this area:

- Truck traffic and noise from moving materials to and from Linden Yards.
- Concrete production in Linden Yards.
- Pile driving continues near Van White Boulevard for the new Luce Line Trail bridge. The old bridge that connects the Luce Line Regional Trail between Bryn Mawr Meadows Park and the Cedar Lake Regional Trail is scheduled to be demolished in early summer. More details to follow.

Minneapolis Construction: Map 5 of 5



Glenwood Avenue to Target Field Station

Construction Overview: LRT will cross a new Glenwood Avenue bridge at the roadway grade. To make that happen three bridges need to be constructed, freight rail shifted, and extensive retaining walls built. This area will see the development of the Royalston Avenue/Farmer’s Market Station, an LRT bridge crossing over North 5th Avenue and North 7th Street and LRT connecting to the Target Field Station. The Holden/Royalston/Border roadway loop will also be reconstructed with improvements.

Current activities to expect in this area:

- Construction activities to advance the LRT bridge at Glenwood Avenue continues. Glenwood Avenue between Lyndale Avenue North and North 12th Street remains closed. [See detour map here.](#)

- In early May along Border Avenue and Holden Street, expect traffic lane and parking impacts as Xcel Energy Company relocates power poles. In early summer, other utility and street reconstruction work will have additional impacts to traffic, sidewalks, and parking. More detail will be provided in future updates.
- Along Royalston Avenue, work to advance retaining walls will resume with concrete forming and earthwork.

Regional Trails

Minnesota River Bluffs Regional Trail

The Minnesota River Bluffs Regional Trail in Hopkins is closed between Shady Oak Road and 5th Avenue South.

[See detour map here.](#)

- The section between Shady Oak Road and 11th Avenue South is closed due to storm sewer construction activities. This portion of the trail is closed until 2022.
- The section between 11th Avenue South and 5th Avenue South is closed 2022.

South Cedar Lake LRT Trail

The South Cedar Lake Trail from just east of the North Cedar Lake Trail connection in Hopkins to France Avenue in St. Louis Park is closed until 2022. The South Cedar Lake Trail will remain open between France Avenue in St. Louis Park and Kenilworth Trail/Midtown Greenway intersection in Minneapolis. The Midtown Greenway will remain open. Currently, cross streets remain open to automobiles, bikers and pedestrians. [See detour maps here.](#)

Kenilworth Trail Closure

The Kenilworth Trail is closed in Minneapolis at the intersection with the Midtown Greenway to just south of West 21st Street. We are currently assessing the tunnel schedule which impacts the opening of this trail segment and we will provide an update when the schedule is known. Access for automobiles, bikers and pedestrians remains open at Cedar Lake Parkway and at West 21st Street. [See detour map here.](#)

North Cedar Lake Trail in Minneapolis

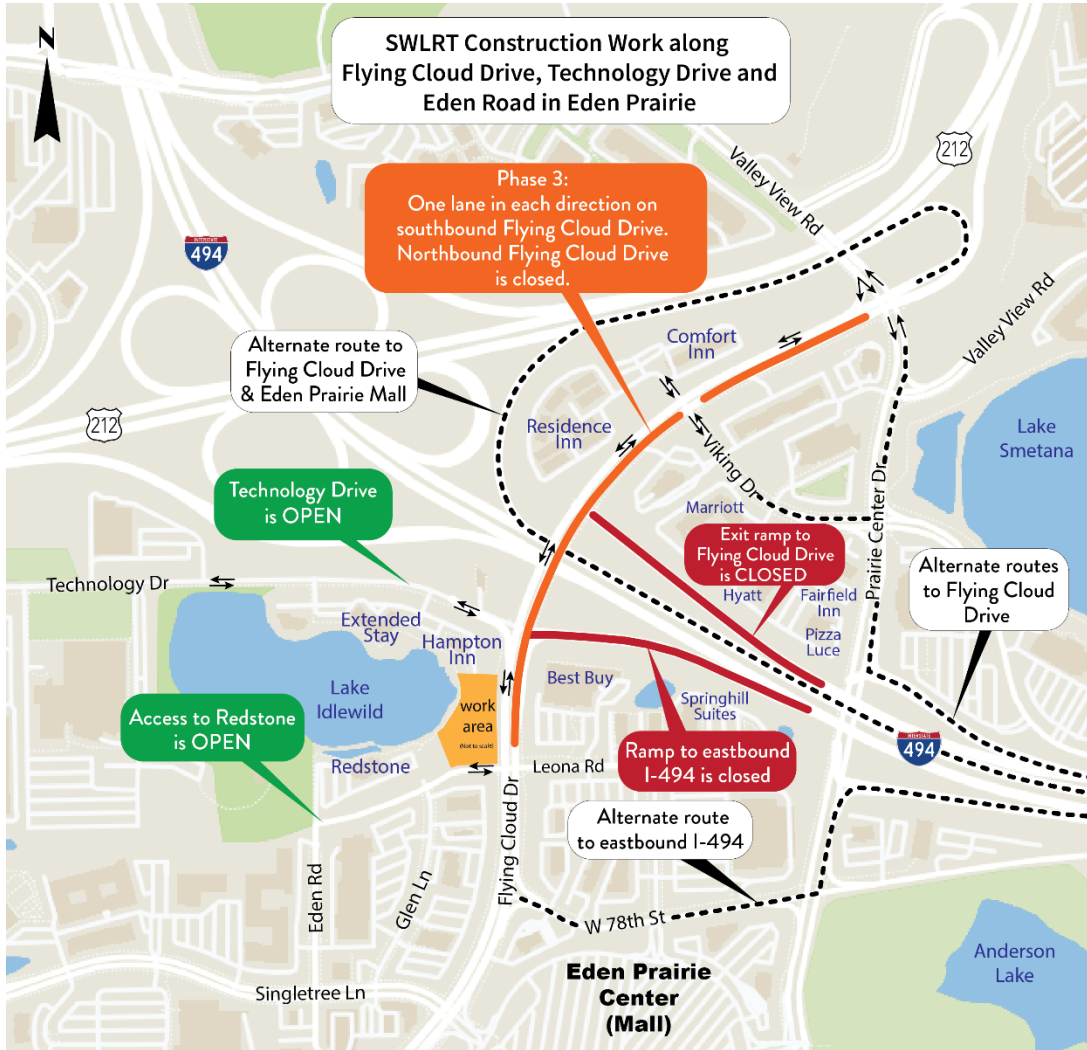
The North Cedar Lake Trail in Minneapolis from Linden Yards located west of Van White Boulevard to east of Royalston Avenue is now anticipated to be closed until 2022. [See detour maps here.](#)

Please note, construction vehicles cross the trail as they enter and exit staging areas. Construction vehicles yield to trail users but please be aware that you may encounter construction traffic in this area.

SouthWest Transit Station Pedestrian Detour in Eden Prairie



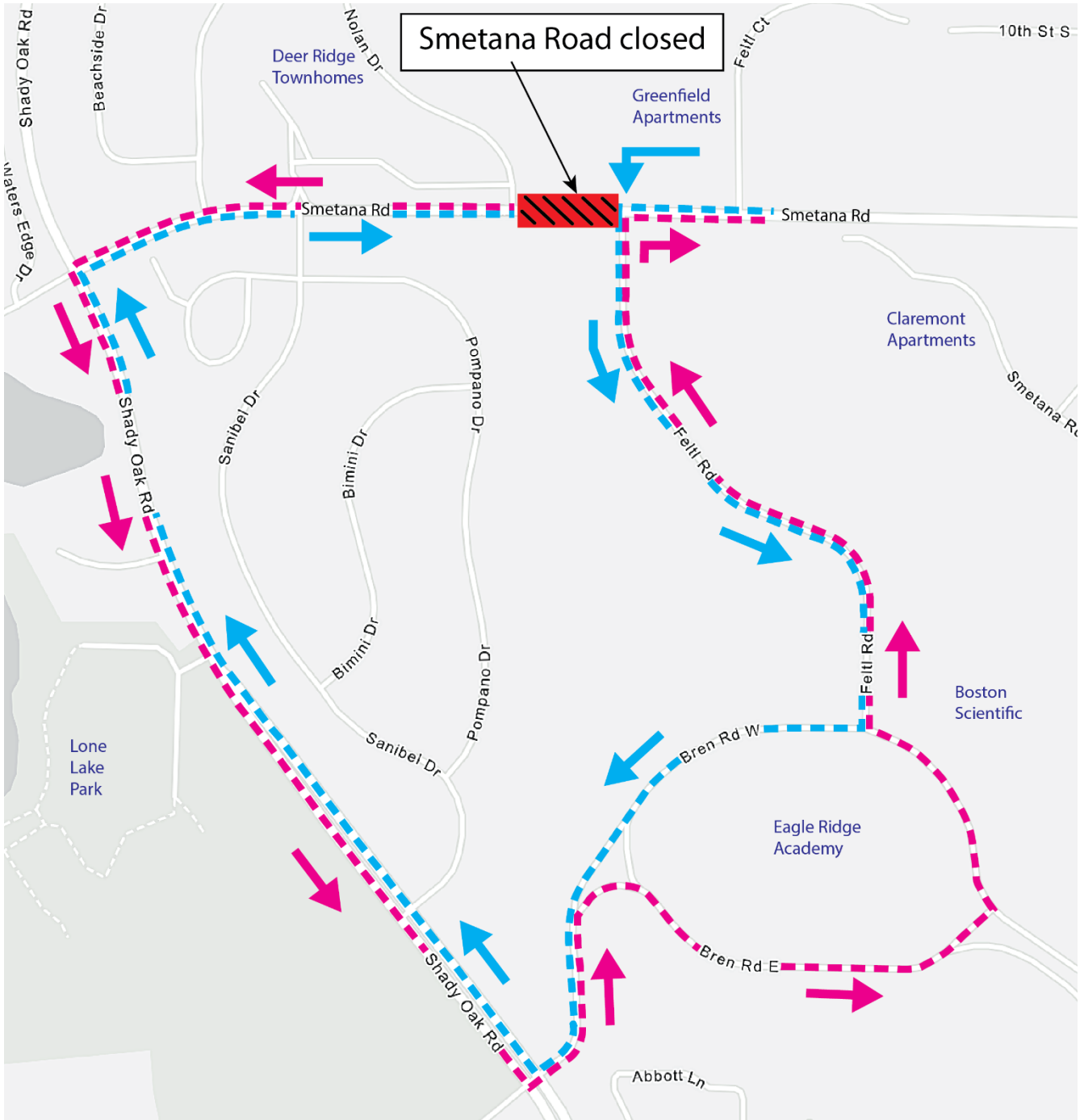
Flying Cloud Drive & Highway 494 Ramps in Eden Prairie



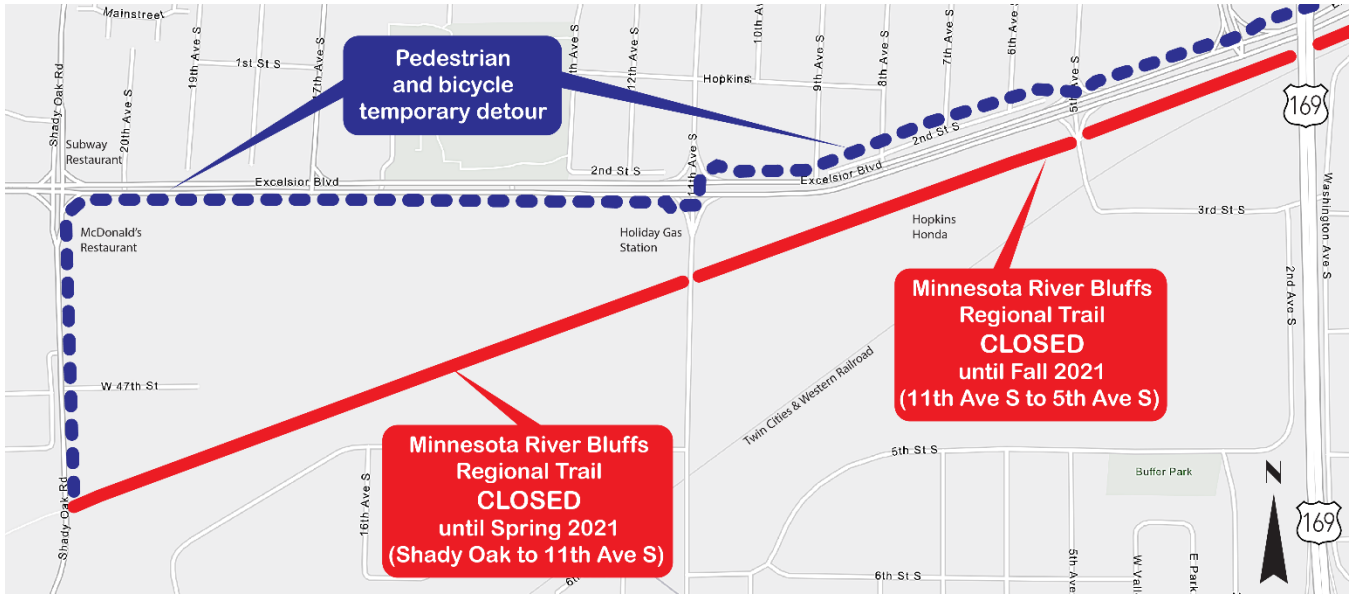
Opus Area Detours in Minnetonka: Red and Yellow Circles



Smetana Road in Minnetonka



Minnesota River Bluff Trail from Shady Oak Road to 5th Avenue Detour

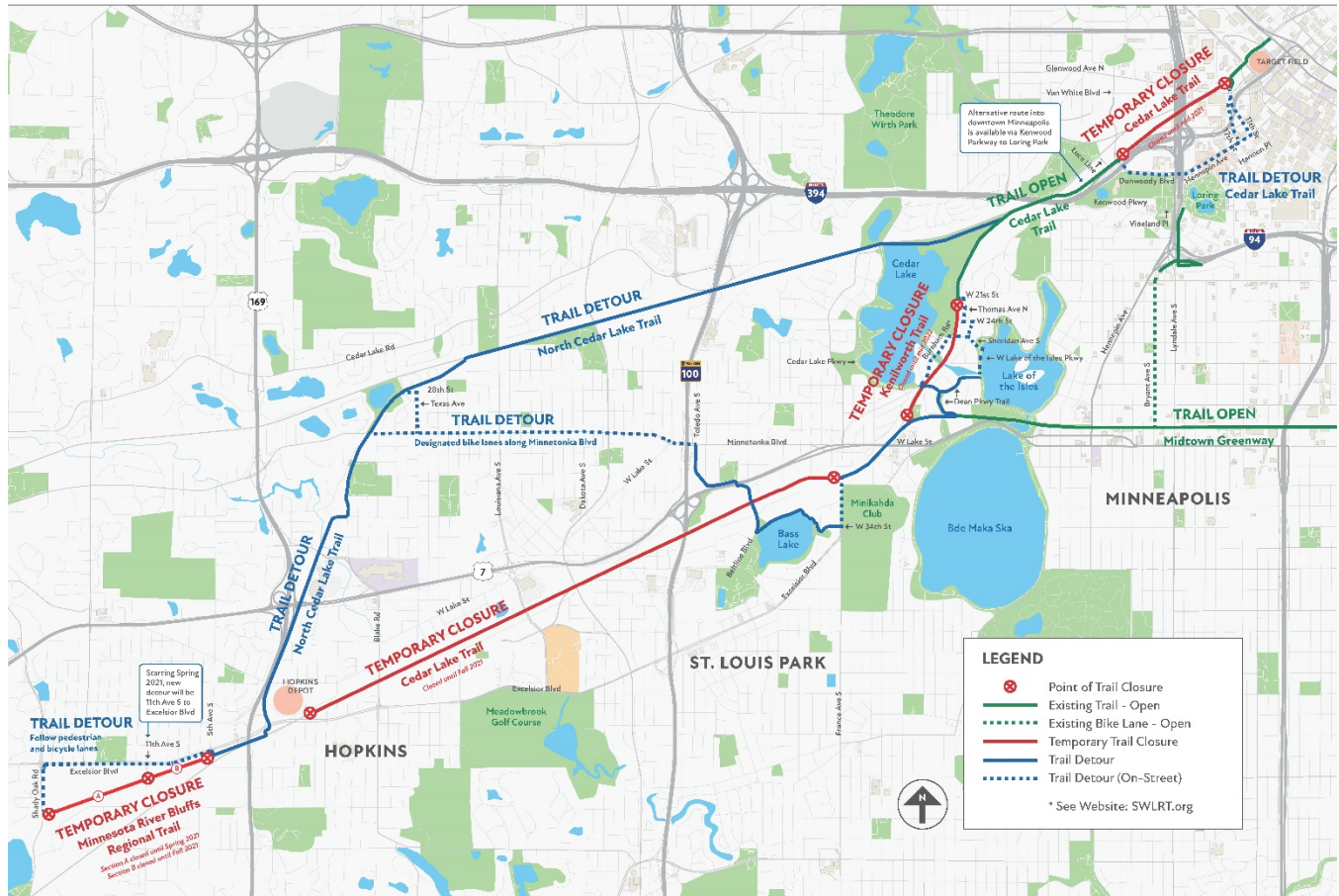


Blake Road in Hopkins



TRAIL DETOUR

MORE DETAILS: SWLRT.ORG



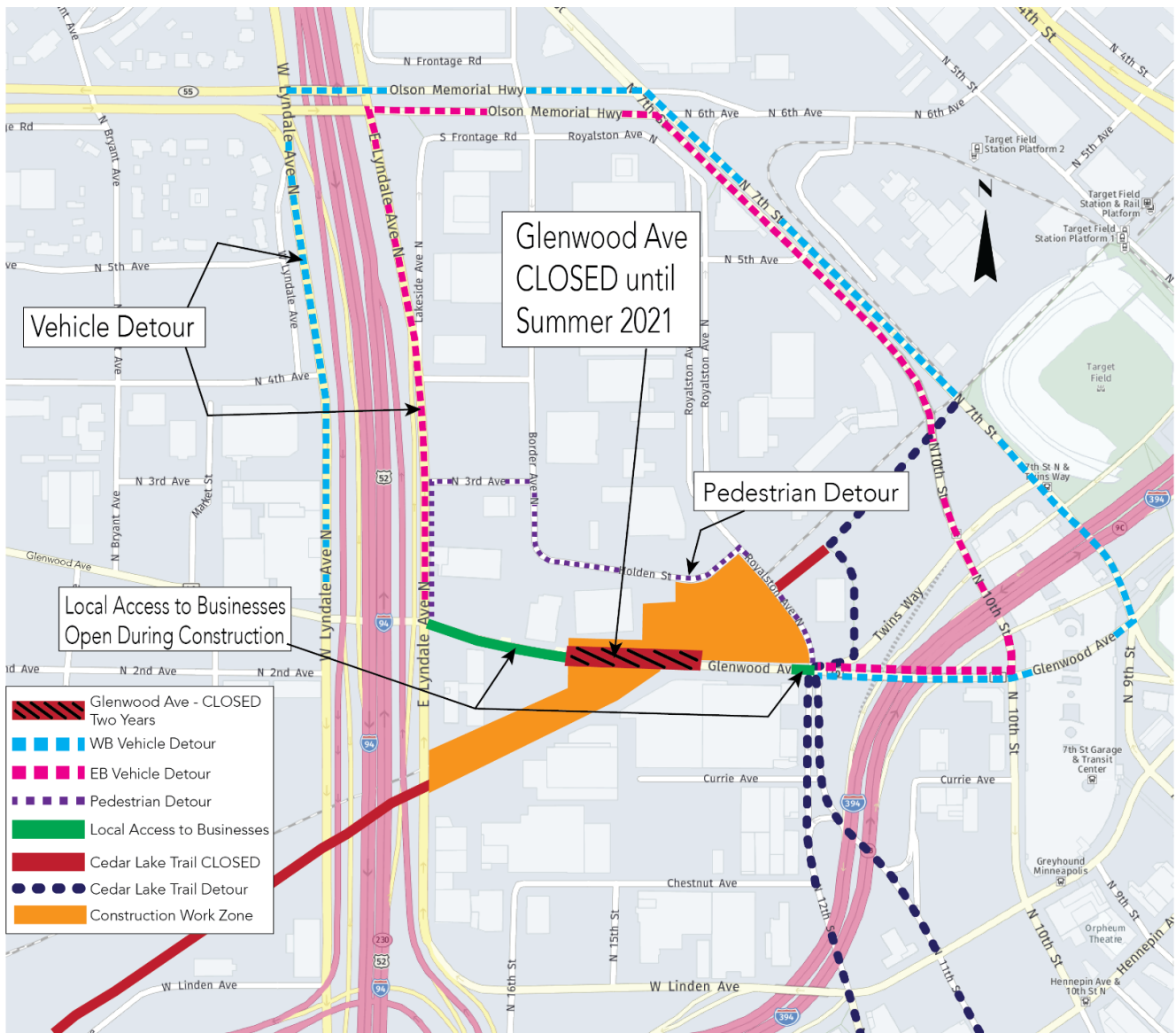
CEDAR LAKE REGIONAL TRAIL

TEMPORARY ALIGNMENT

MORE DETAILS: SWLRT.ORG



Glenwood Avenue Detour in Minneapolis



Royalston Avenue Detour in Minneapolis

