

**SOUTHWEST**

Green Line LRT Extension



# City of Hopkins Public Hearing on SWLRT Municipal Consent Plans

June 3, 2014



# Agenda

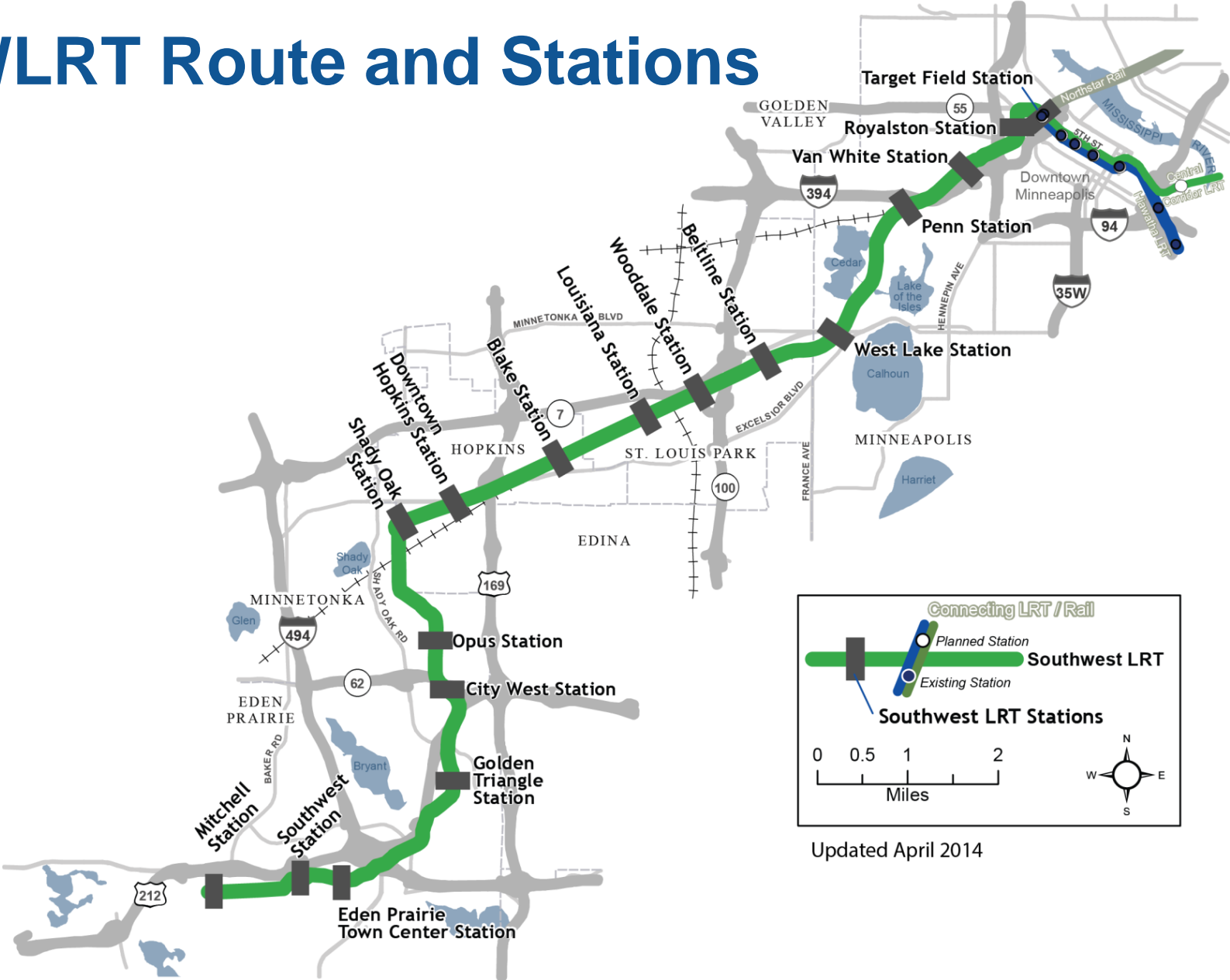
- 6:00 PM Open House
  - Opportunity for the public to ask questions, get answers
- 7:00 PM Public Hearing
  - Welcome and brief project overview
  - Opportunity for the public to comment on plans



# Purpose of Today's Municipal Consent Public Hearing

- Provide stakeholders an opportunity to comment to their municipality on preliminary design plans
- Comments will be used to:
  - Decide whether or not to approve the plans
  - Inform municipality's comments to be forwarded to the Met Council

# SWLRT Route and Stations



Connecting LRT / Rail

Planned Station

Existing Station

Southwest LRT

Southwest LRT Stations

0 0.5 1 2 Miles

Updated April 2014

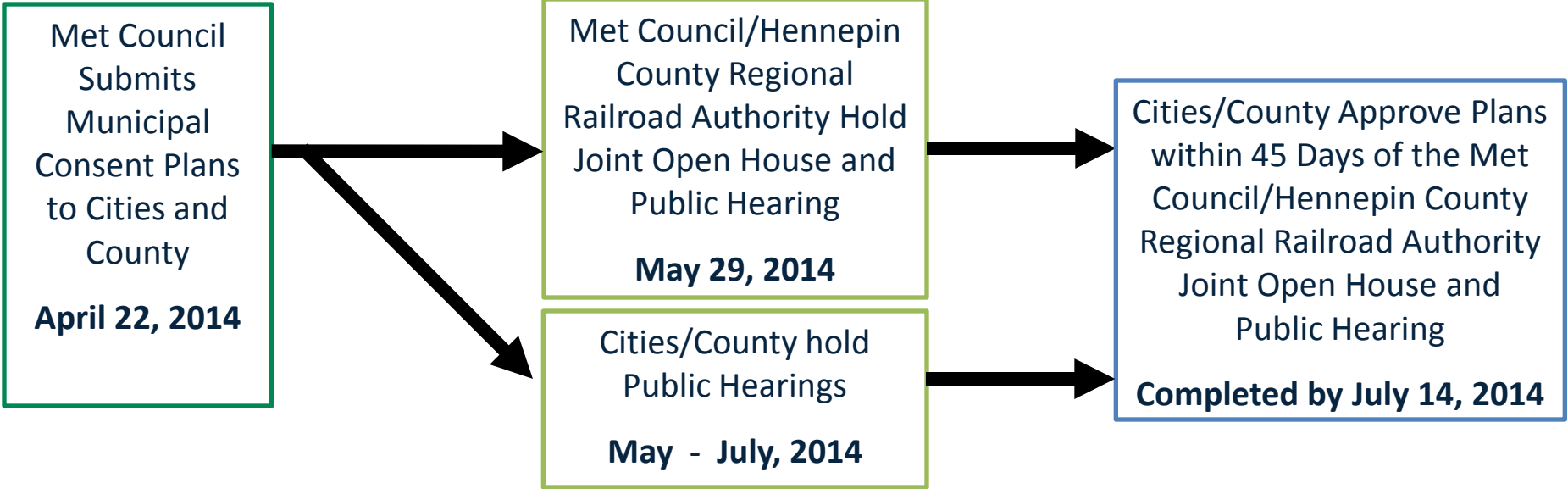
# Met Council Approved Project Scope and Budget

- SWLRT Scope:
  - 16 stations
  - 15.8 miles of new LRT double track
  - LRT tunnels in Kenilworth Corridor with LRT bridge over channel
  - Operations and Maintenance Facility located in Hopkins
- SWLRT Budget: \$1.673B - \$1.683B

# Municipal Consent Process

- Minnesota Statute 473.3994
- Local jurisdictional review and approval of physical design component of preliminary design plans

# Municipal Consent Process

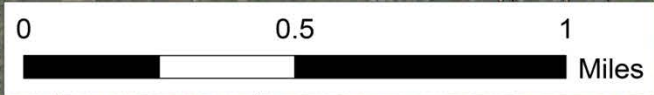




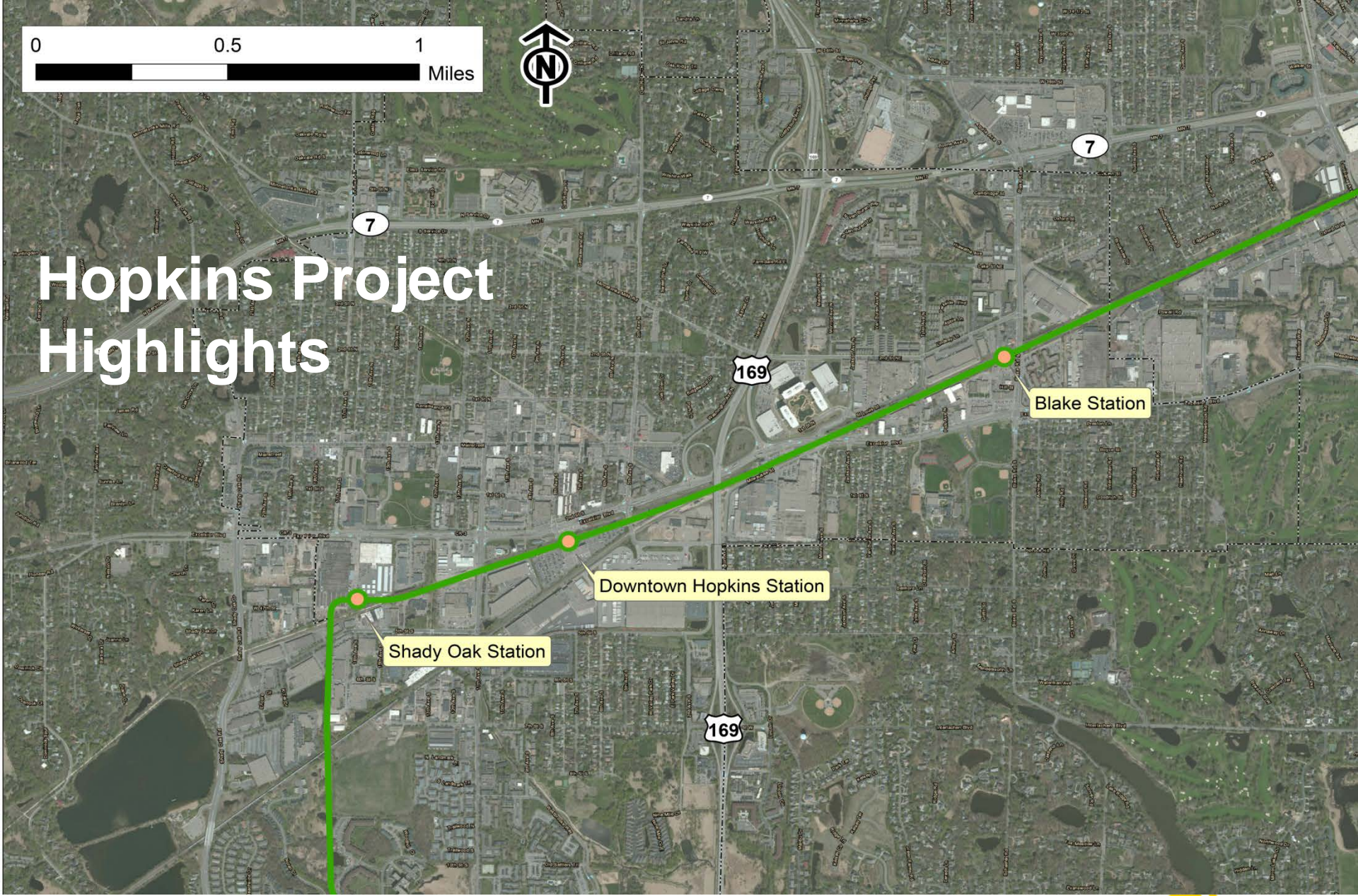
# Physical Design Components

- LRT track location
- Station location and layout
- Roadway features
  - Turn lanes
  - Lane widths
  - Traffic signals
- Sidewalks
- Pedestrian crossings
- Operations and Maintenance Facility (OMF) location
- Freight track location
- System elements





# Hopkins Project Highlights



Shady Oak Station

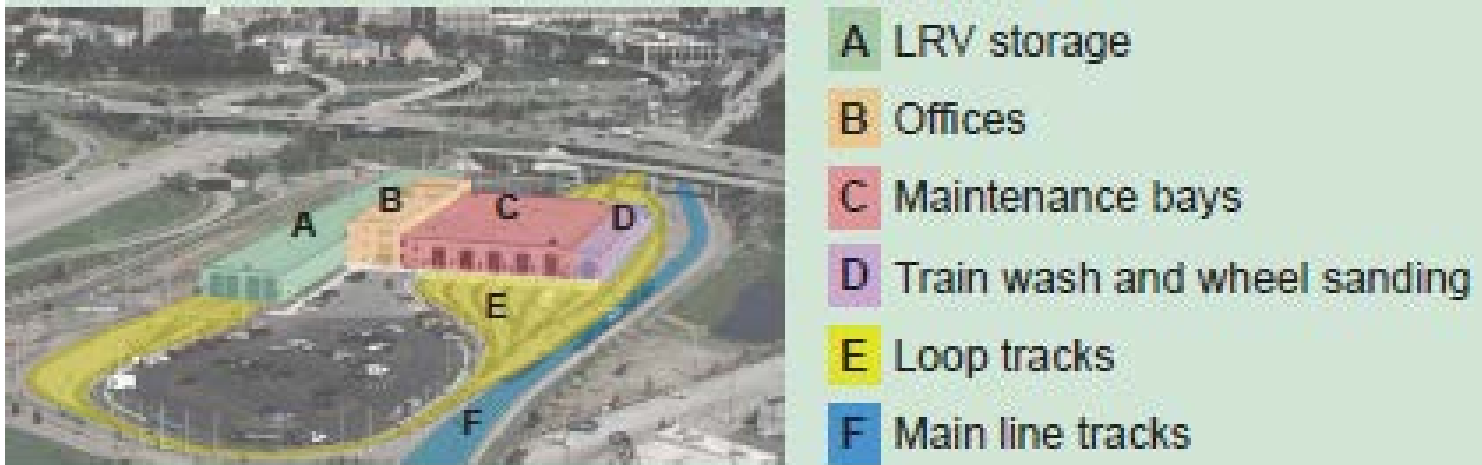
Downtown Hopkins Station

Blake Station



# Operations and Maintenance Facility (OMF)

- The METRO Blue Line (Hiawatha LRT) OMF features fully enclosed:
  - Staff offices and train control center
  - Light rail vehicle storage
  - Bays for cleaning and maintenance activities



# Next Steps After Municipal Consent

- Station design and public art
- Streetscape design
- Utility relocation design
- Design advancement:
  - LRT track features
  - Roadway details
  - OMF features
  - Bridges and tunnels
  - System elements
  - Freight rail features

# More Information

Online:

[www.SWLRT.org](http://www.SWLRT.org)

Email:

[SWLRT@metrotransit.org](mailto:SWLRT@metrotransit.org)

Twitter:

[www.twitter.com/southwestlrt](http://www.twitter.com/southwestlrt)

